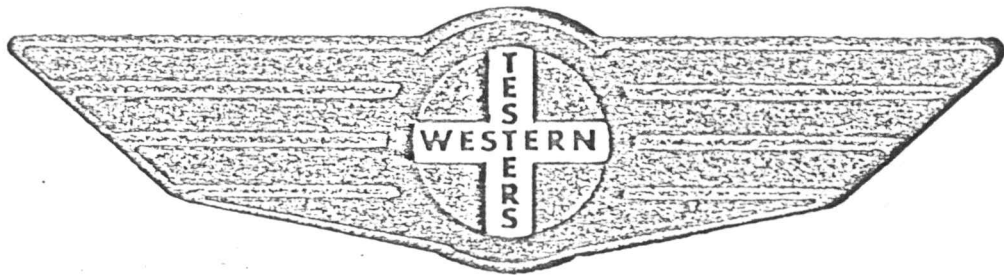


# FORMATION

# TEST

# REPORT



Home Office:

Wichita, Kansas 67201

P.O. Box 1599

Phone (316) 262-5861

Company RAINS & WILLIAMSON OIL CO. INC. Lease & Well No. #6 ZIEGLER Sec. 3 Twp. 10S Rge. 26W Test No. 1 Date 8/6/85

WESTERN TESTING CO. INC.  
SUBSURFACE PRESSURE SURVEY

DATE: 8/6/85  
CUSTOMER: RAINS & WILLIAMSON OIL CO INC  
WELL: 6 TEST: 1  
ELEVATION (KB): 2584 FORMATION: KANSAS CITY  
SECTION: 3 TOWNSHIP: 10S  
RANGE: 26W COUNTY: SHERIDAN STATE: KANSAS  
GAUGE SN #13630 RANGE: 4625 CLOCK: 12

TICKET #10190  
LEASE: ZIEGLER  
GEOLOGIST: HAGEMEIER

INTERVAL TEST FROM: 3795 FT TO: 3855 FT TOTAL DEPTH: 3855 FT  
DEPTH OF SELECTIVE ZONE: FT  
PACKER DEPTH: 3790 FT SIZE: 6 3/4 IN PACKER DEPTH: 3795 FT SIZE: 6 3/4 IN  
PACKER DEPTH: FT SIZE: IN PACKER DEPTH: FT SIZE: IN

DRILLING CONTRACTOR: RAINS & WILLIAMSON  
MUD TYPE: CHEMICAL VISCOSITY: 37  
WEIGHT: 9.6 WATER LOSS (CC): 13.6  
CHLORIDES (P.P.M.): 6500

JARS - MAKE: SERIAL NUMBER:  
DID WELL FLOW? REVERSED OUT?

DRILL COLLAR LENGTH: FT I.D.: IN  
WEIGHT PIPE LENGTH: FT I.D.: IN  
DRILL PIPE LENGTH: 3773 FT I.D.: 3.6 IN  
TEST TOOL LENGTH: 22 FT TOOL SIZE: 5 1/2 OD IN  
ANCHOR LENGTH: 60 FT SIZE: 5 1/2 OD IN  
SURFACE CHOKE SIZE: 3/4 IN BOTTOM CHOKE SIZE: 3/4 IN  
MAIN HOLE SIZE: 7 7/8 IN TOOL JOINT SIZE: 4 1/2 XH IN

BLOW: INITIAL FLOW PERIOD WEAK BLOW  
BUILDING TO 2" IN BUCKET.  
FINAL FLOW PERIOD VERY WEAK BLOW  
BUILDING TO 2" IN BUCKET.

RECOVERED: 100 FT OF: MUD CUT WATER WITH A TRACE OF OIL.  
RECOVERED: FT OF: CHLORIDES 30000 PPM.  
RECOVERED: FT OF:  
RECOVERED: FT OF:  
RECOVERED: FT OF:  
RECOVERED: FT OF:  
RECOVERED: FT OF:  
RECOVERED: FT OF:  
RECOVERED: FT OF:

REMARKS: SLID TOOL 10 FEET TO BOTTOM.

TIME SET PACKER(S): 2:00 PM

TIME STARTED OFF BOTTOM: 5:00 PM

WELL TEMPERATURE: 122 °F

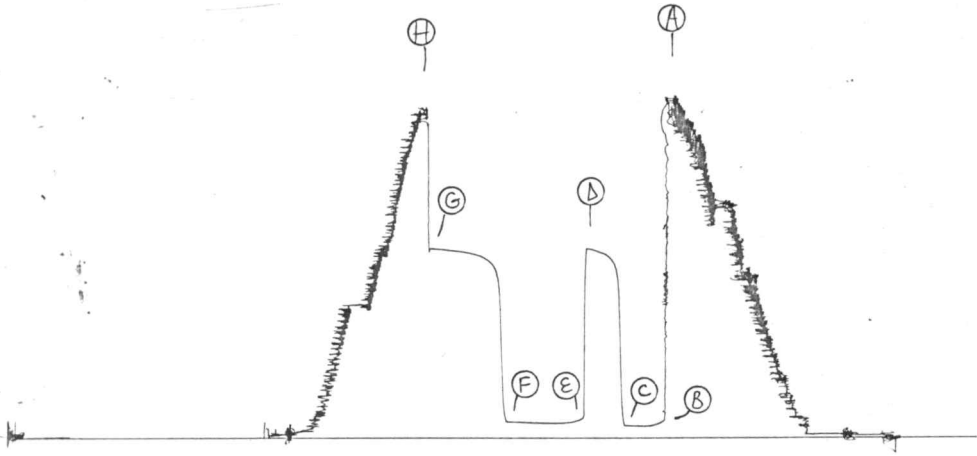
INITIAL HYDROSTATIC PRESSURE: (A) 1923 PSI  
INITIAL FLOW PERIOD MIN: 30 (B) 68 PSI TO (C) 70 PSI  
INITIAL CLOSED IN PERIOD MIN: 27 (D) 1110 PSI  
FINAL FLOW PERIOD MIN: 60 (E) 85 PSI TO (F) 95 PSI  
FINAL CLOSED IN PERIOD MIN: 57 (G) 1115 PSI  
FINAL HYDROSTATIC PRESSURE (H) 1906 PSI



TKT # 10190

13000  
ASTI

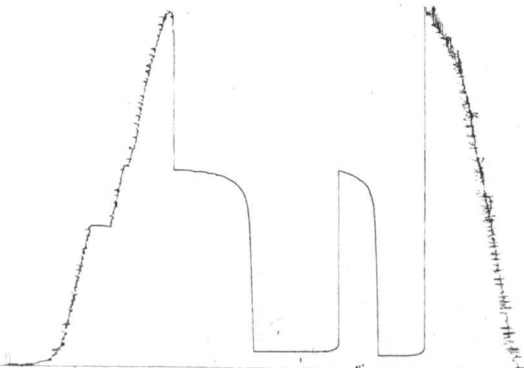
I



TKT # 10190

2604  
DST1

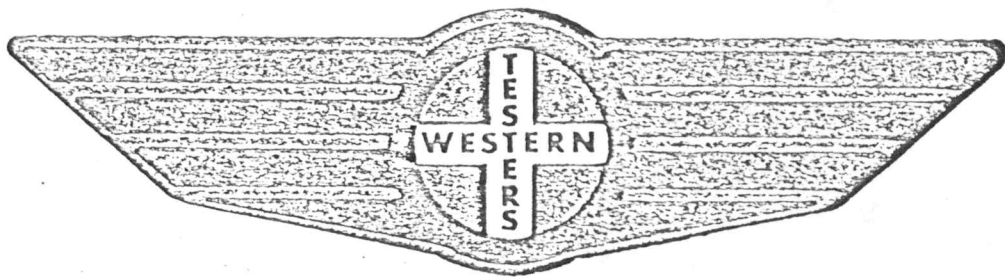
0



# FORMATION

# TEST

# REPORT



Home Office:

Wichita, Kansas 67201

P.O. Box 1599

Phone (316) 262-5861

WESTERN TESTING CO. INC.  
SUBSURFACE PRESSURE SURVEY

DATE: 8/7/85 TICKET #10191  
 CUSTOMER: RAINS & WILLIAMSON OIL CO INC LEASE: ZIEGLER  
 WELL: 6 TEST: 2 GEOLOGIST: HAGEMEIER  
 ELEVATION (KB): 2584 FORMATION: KANSAS CITY  
 SECTION: 3 TOWNSHIP: 10S  
 RANGE: 26W COUNTY: SHERIDAN STATE: KANSAS  
 GAUGE SN #13630 RANGE: 4625 CLOCK: 12

INTERVAL TEST FROM: 3860 FT TO: 3895 FT TOTAL DEPTH: 3895 FT  
 DEPTH OF SELECTIVE ZONE: FT  
 PACKER DEPTH: 3855 FT SIZE: 6 3/4 IN PACKER DEPTH: 3860 FT SIZE: 6 3/4 IN  
 PACKER DEPTH: FT SIZE: IN PACKER DEPTH: FT SIZE: IN

DRILLING CONTRACTOR: RAINS & WILLIAMSON  
 MUD TYPE: CHEMICAL VISCOSITY: 45  
 WEIGHT: 9.3 WATER LOSS (CC): 10.0  
 CHLORIDES (P.P.M.): 8000  
 JARS - MAKE: SERIAL NUMBER:  
 DID WELL FLOW? REVERSED OUT?  
 DRILL COLLAR LENGTH: FT I.D.: IN  
 WEIGHT PIPE LENGTH: FT I.D.: IN  
 DRILL PIPE LENGTH: 3838 FT I.D.: 3.6 IN  
 TEST TOOL LENGTH: 22 FT TOOL SIZE: 5 1/2 OD IN  
 ANCHOR LENGTH: 35 FT SIZE: 5 1/2 OD IN  
 SURFACE CHOKE SIZE: 3/4 IN BOTTOM CHOKE SIZE: 3/4 IN  
 MAIN HOLE SIZE: 7 7/8 IN TOOL JOINT SIZE: 4 1/2 XH IN

BLOW: INITIAL FLOW PERIOD WEAK BLOW  
 BUILDING TO 2 1/2" IN BUCKET.  
 FINAL FLOW PERIOD VERY WEAK BLOW  
 BUILDING TO 1" IN BUCKET.

RECOVERED: 80 FT OF: MUD CUT WATER WITH OIL SPOTS.  
 RECOVERED: FT OF: CHLORIDES 28000 PPM.  
 RECOVERED: FT OF:  
 RECOVERED: FT OF:  
 RECOVERED: FT OF:  
 RECOVERED: FT OF:  
 RECOVERED: FT OF:  
 RECOVERED: FT OF:  
 RECOVERED: FT OF:  
 RECOVERED: FT OF:

REMARKS:

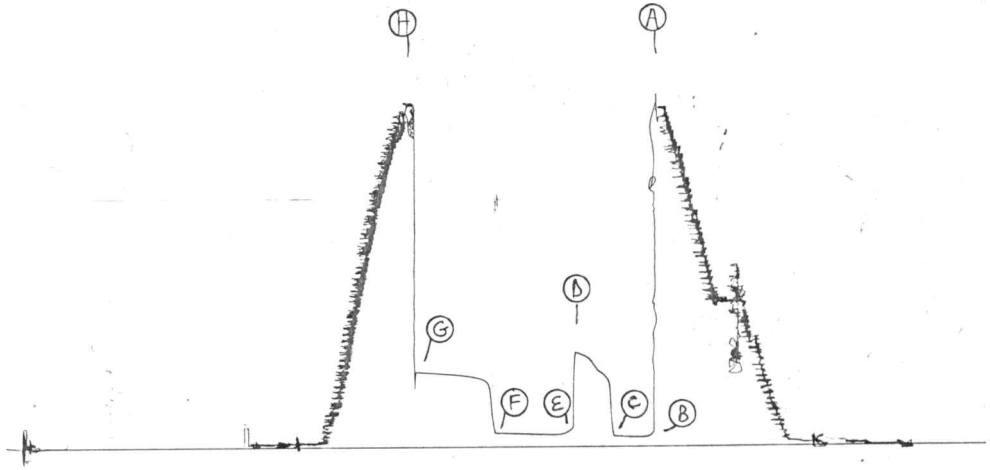
TIME SET PACKER(S): 7:10 AM TIME STARTED OFF BOTTOM: 10:10 AM  
 WELL TEMPERATURE: 122 °F  
 INITIAL HYDROSTATIC PRESSURE: (A) 1922 PSI  
 INITIAL FLOW PERIOD MIN: 30 (B) 53 PSI TO (C) 60 PSI  
 INITIAL CLOSED IN PERIOD MIN: 30 (D) 542 PSI  
 FINAL FLOW PERIOD MIN: 60 (E) 68 PSI TO (F) 79 PSI  
 FINAL CLOSED IN PERIOD MIN: 60 (G) 431 PSI  
 FINAL HYDROSTATIC PRESSURE (H) 1908 PSI



TKT # 10191

1000 -  
OST 2

I

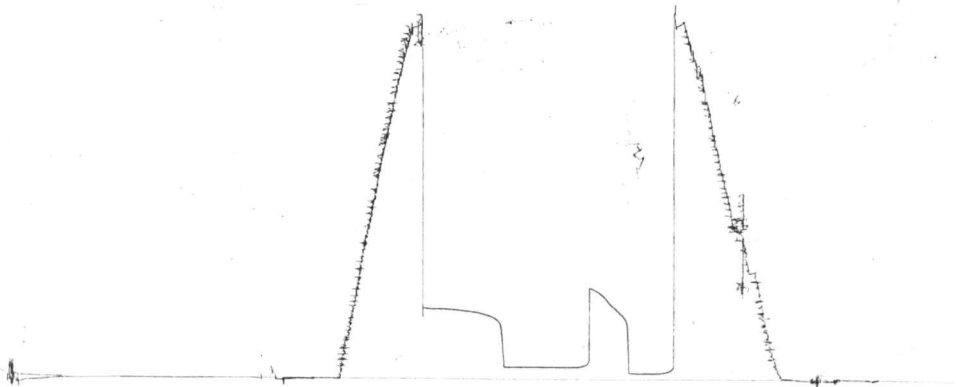


TKT # 10191

---

2604  
DST2

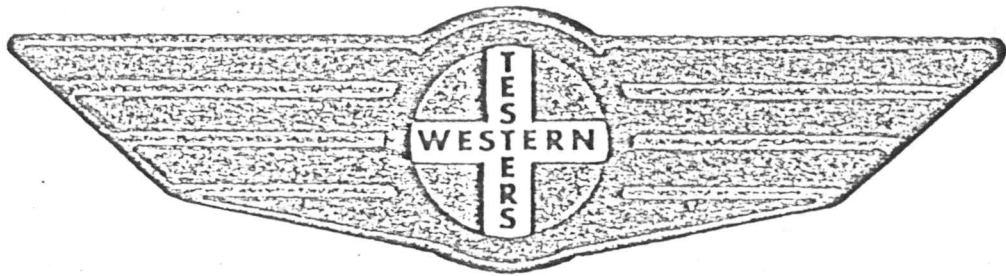
O



# FORMATION

# TEST

# REPORT



Home Office:

Wichita, Kansas 67201

P.O. Box 1599

Phone (316) 262-5861

Company \_\_\_\_\_ KAINS & WILLIAMSON OIL CO., LEANS & Well No. \_\_\_\_\_ #0 21EGLER \_\_\_\_\_ Sec. 3 \_\_\_\_\_ Twp. 10S \_\_\_\_\_ Rge. 26W \_\_\_\_\_ Test No. \_\_\_\_\_ Date 8/8/83

WESTERN TESTING CO. INC.  
SUBSURFACE PRESSURE SURVEY

DATE: 8-8-85 TICKET #10192  
CUSTOMER: RAINS & WILLIAMSON OIL CO INC LEASE: ZIEGLER  
WELL: 6 TEST: 3 GEOLOGIST: P. HAGEMIEIER  
ELEVATION (KB): 2584 FORMATION: KANSAS CITY "140"  
SECTION: 3 TOWNSHIP: 10S  
RANGE: 26W COUNTY: SHERIDAN STATE: KANSAS  
GAUGE SN #13630 RANGE: 4625 CLOCK: 12

INTERVAL TEST FROM: 3970 FT TO: 4000 FT TOTAL DEPTH: 4000 FT  
DEPTH OF SELECTIVE ZONE: FT  
PACKER DEPTH: 3965 FT SIZE: 6 3/4 IN PACKER DEPTH: 3970 FT SIZE: 6 3/4 IN  
PACKER DEPTH: FT SIZE: IN PACKER DEPTH: FT SIZE: IN

DRILLING CONTRACTOR: RAINS/WILLIAMSON #11  
MUD TYPE: CHEMICAL VISCOSITY: 45  
WEIGHT: 9.3 WATER LOSS (CC): 10.0  
CHLORIDES (P.P.M.): 8000  
JARS - MAKE: SERIAL NUMBER:  
DID WELL FLOW? REVERSED OUT?  
DRILL COLLAR LENGTH: FT I.D.: IN  
WEIGHT PIPE LENGTH: FT I.D.: IN  
DRILL PIPE LENGTH: 3948 FT I.D.: 3.6 IN  
TEST TOOL LENGTH: 22 FT TOOL SIZE: 5 1/2 OD IN  
ANCHOR LENGTH: 30 FT SIZE: 5 1/2 OD IN  
SURFACE CHOKE SIZE: 3/4 IN BOTTOM CHOKE SIZE: 3/4 IN  
MAIN HOLE SIZE: 7 7/8 IN TOOL JOINT SIZE: 4 1/2 XH IN

BLOW: INITIAL FLOW PERIOD BUILDING TO STRONG BLOW;  
OFF BOTTOM OF BUCKET IN 2 MINUTES.  
FINAL FLOW PERIOD WEAK BLOW  
BUILDING TO 5 INCHES IN BUCKET.

RECOVERED: 270 FT OF: MUD.  
RECOVERED: 120 FT OF: MUD CUT WATER WITH SCUM OF OIL.  
RECOVERED: FT OF: CHLORIDES 25000 PPM.  
RECOVERED: FT OF:  
RECOVERED: FT OF:  
RECOVERED: FT OF:  
RECOVERED: FT OF:  
RECOVERED: FT OF:  
RECOVERED: FT OF:  
RECOVERED: FT OF:

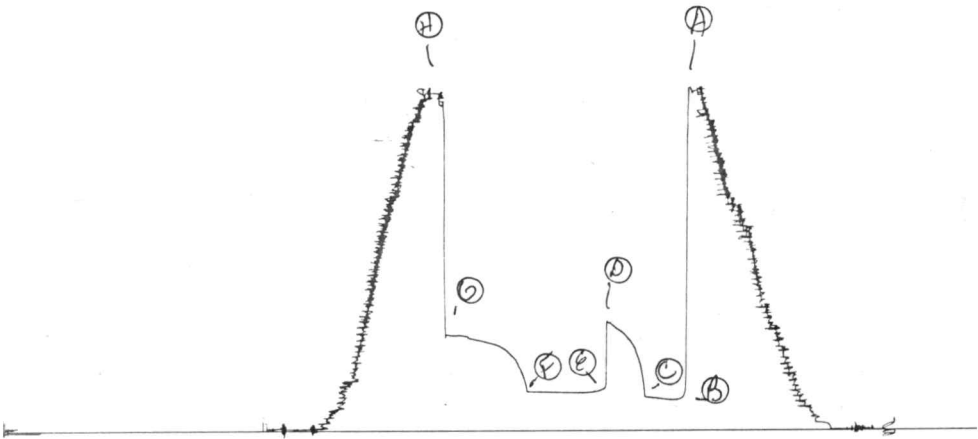
REMARKS:

TIME SET PACKER(S): 4:00 AM TIME STARTED OFF BOTTOM: 7:00 AM  
WELL TEMPERATURE: 124 °F  
INITIAL HYDROSTATIC PRESSURE: (A) 1997 PSI  
INITIAL FLOW PERIOD MIN: 30 (B) 180 PSI TO (C) 197 PSI  
INITIAL CLOSED IN PERIOD MIN: 30 (D) 636 PSI  
FINAL FLOW PERIOD MIN: 60 (E) 220 PSI TO (F) 228 PSI  
FINAL CLOSED IN PERIOD MIN: 60 (G) 557 PSI  
FINAL HYDROSTATIC PRESSURE (H) 1986 PSI



0573

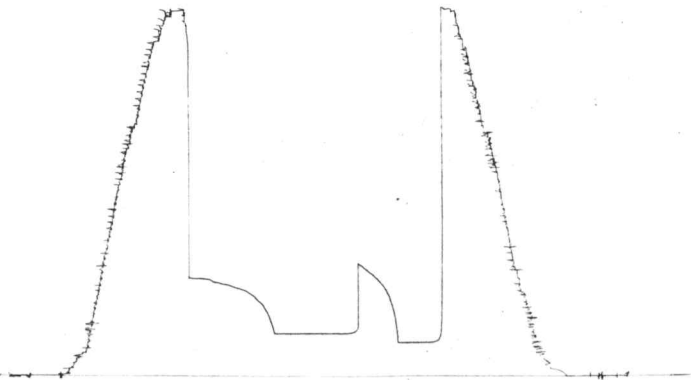
PKA # 10192  
I



2.00T  
OST3

2/4 # 10192

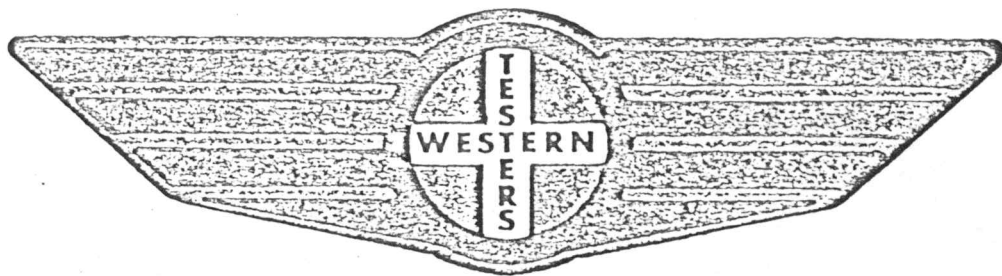
0



# FORMATION

# TEST

# REPORT



Home Office:

Wichita, Kansas 67201

P.O. Box 1599

Phone (316) 262-5861

Company \_\_\_\_\_ KALNS & WILLIAMSON ULL CO., INC. Lease & Well No. \_\_\_\_\_ #0 21EGLER \_\_\_\_\_ Sec. 3 \_\_\_\_\_ Twp. 10S \_\_\_\_\_ Rge. 26W \_\_\_\_\_ Test No. \_\_\_\_\_ 4 Date 8/8/85

WESTERN TESTING CO. INC.  
SUBSURFACE PRESSURE SURVEY

DATE: 8-8-85  
 CUSTOMER: RAINS & WILLIAMSON OIL CO INC  
 WELL: 6 TEST: 4  
 ELEVATION (KB): 2584 FORMATION: KANSAS CITY "180"  
 SECTION: 3 TOWNSHIP: 10S  
 RANGE: 26W COUNTY: SHERIDAN STATE: KANSAS  
 GAUGE SN #13630 RANGE: 4625 CLOCK: 12

INTERVAL TEST FROM: 4022 FT TO: 4038 FT TOTAL DEPTH: 4038 FT  
 DEPTH OF SELECTIVE ZONE: FT  
 PACKER DEPTH: 4017 FT SIZE: 6 3/4 IN PACKER DEPTH: 4022 FT SIZE: 6 3/4 IN  
 PACKER DEPTH: FT SIZE: IN PACKER DEPTH: FT SIZE: IN

DRILLING CONTRACTOR: RAINS/WILLIAMSON #11  
 MUD TYPE: CHEMICAL VISCOSITY: 45  
 WEIGHT: 9.3 WATER LOSS (CC): 10.0  
 CHLORIDES (P.P.M.): 8000  
 JARS - MAKE: SERIAL NUMBER:  
 DID WELL FLOW? REVERSED OUT?  
 DRILL COLLAR LENGTH: FT I.D.: IN  
 WEIGHT PIPE LENGTH: FT I.D.: IN  
 DRILL PIPE LENGTH: 4000 FT I.D.: 3.6 IN  
 TEST TOOL LENGTH: 22 FT TOOL SIZE: 5 1/2 OD IN  
 ANCHOR LENGTH: 16 FT SIZE: 5 1/2 OD IN  
 SURFACE CHOKE SIZE: 3/4 IN BOTTOM CHOKE SIZE: 3/4 IN  
 MAIN HOLE SIZE: 7 7/8 IN TOOL JOINT SIZE: 4 1/2 XH IN

BLOW: INITIAL FLOW PERIOD WEAK BLOW;  
 DEAD IN 25 MINUTES.  
 FINAL FLOW PERIOD NO BLOW.

RECOVERED: 15 FT OF: MUD.  
 RECOVERED: FT OF: CHLORIDES 10000 PPM.  
 RECOVERED: FT OF:  
 RECOVERED: FT OF:  
 RECOVERED: FT OF:  
 RECOVERED: FT OF:  
 RECOVERED: FT OF:  
 RECOVERED: FT OF:  
 RECOVERED: FT OF:  
 RECOVERED: FT OF:

REMARKS: FLUSHED TOOL FINAL FLOW PERIOD.  
 SLID TOOL 5 FEET TO BOTTOM.

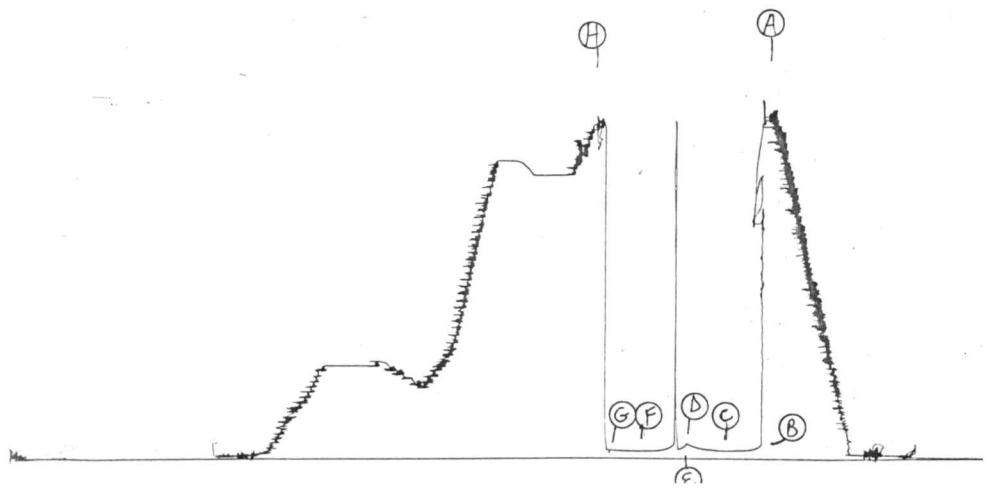
TIME SET PACKER(S): 8:15 PM TIME STARTED OFF BOTTOM: 10:15 PM  
 WELL TEMPERATURE: 124 °F  
 INITIAL HYDROSTATIC PRESSURE: (A) 2005 PSI  
 INITIAL FLOW PERIOD MIN: 25 (B) 53 PSI TO (C) 53 PSI  
 INITIAL CLOSED IN PERIOD MIN: 30 (D) 93 PSI  
 FINAL FLOW PERIOD MIN: 30 (E) 65 PSI TO (F) 54 PSI  
 FINAL CLOSED IN PERIOD MIN: 27 (G) 59 PSI  
 FINAL HYDROSTATIC PRESSURE (H) 1982 PSI



TKT # 10193

1560  
Dst4

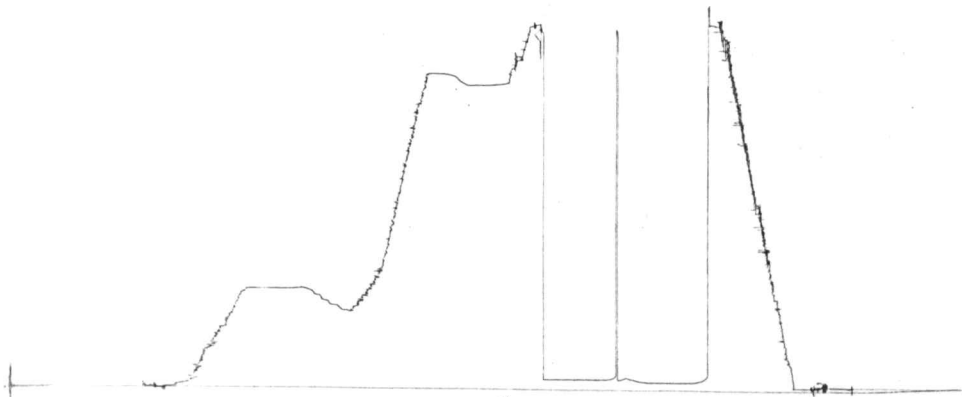
I



TKT # 10193

2604  
D5+4

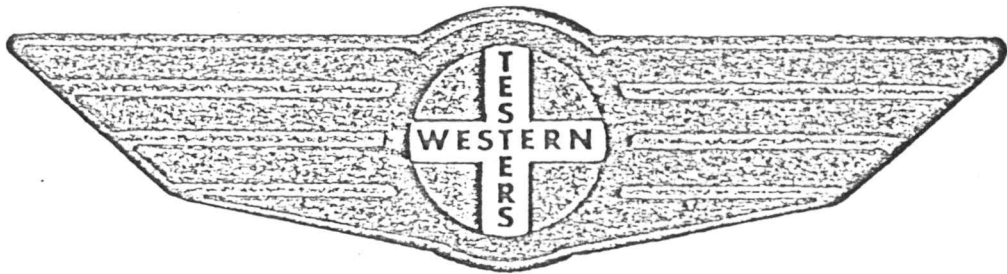
0



FORMATION

TEST

REPORT



Home Office:

Wichita, Kansas 67201

P.O. Box 1599

Phone (316) 262-5861

Company \_\_\_\_\_ RAINS & WILLIAMSON OIL CO., LEASE & Well No. #6 ZIEGLER \_\_\_\_\_ Sec. 3 \_\_\_\_\_ Twp. 10S Rge. 26W Test No. \_\_\_\_\_ 5 Date 8/9/85 \_\_\_\_\_

WESTERN TESTING CO. INC.  
SUBSURFACE PRESSURE SURVEY

DATE: 8-9-85  
CUSTOMER: RAINS & WILLIAMSON OIL CO INC  
WELL: 6 TEST: 5  
ELEVATION (KB): 2584 FORMATION: KANSAS CITY "200"  
SECTION: 3 TOWNSHIP: 10S  
RANGE: 26W COUNTY: SHERIDAN STATE: KANSAS  
GAUGE SN #13630 RANGE: 4625 CLOCK: 12

INTERVAL TEST FROM: 4042 FT TO: 4058 FT TOTAL DEPTH: 4058 FT  
DEPTH OF SELECTIVE ZONE: FT  
PACKER DEPTH: 4037 FT SIZE: 6 3/4 IN Packer DEPTH: 4042 FT SIZE: 6 3/4 IN  
PACKER DEPTH: FT SIZE: IN Packer DEPTH: FT SIZE: IN

DRILLING CONTRACTOR: RAINS/WILLIAMSON #11  
MUD TYPE: CHEMICAL VISCOSITY: 40  
WEIGHT: 9.3 WATER LOSS (CC): 10.0  
CHLORIDES (P.P.M.): 7000

JARS - MAKE: SERIAL NUMBER:  
DID WELL FLOW? REVERSED OUT?  
DRILL COLLAR LENGTH: FT I.D.: IN  
WEIGHT PIPE LENGTH: FT I.D.: IN  
DRILL PIPE LENGTH: 4020 FT I.D.: 3.6 IN  
TEST TOOL LENGTH: 22 FT TOOL SIZE: 5 1/2 OD IN  
ANCHOR LENGTH: 16 FT SIZE: 5 1/2 OD IN  
SURFACE CHOKE SIZE: 3/4 IN BOTTOM CHOKE SIZE: 3/4 IN  
MAIN HOLE SIZE: 7 7/8 IN TOOL JOINT SIZE: 4 1/2 XH IN

BLOW: INITIAL FLOW PERIOD WEAK BLOW;  
DEAD IN 20 MINUTES.  
FINAL FLOW PERIOD NO BLOW; FLUSHED TOOL.

RECOVERED: 5 FT OF: MUD WITH TRACE OF OIL.  
RECOVERED: FT OF: CHLORIDES 8000 PPM.  
RECOVERED: FT OF:  
RECOVERED: FT OF:  
RECOVERED: FT OF:  
RECOVERED: FT OF:  
RECOVERED: FT OF:  
RECOVERED: FT OF:  
RECOVERED: FT OF:

REMARKS: FLUSHED TOOL FINAL FLOW PERIOD.

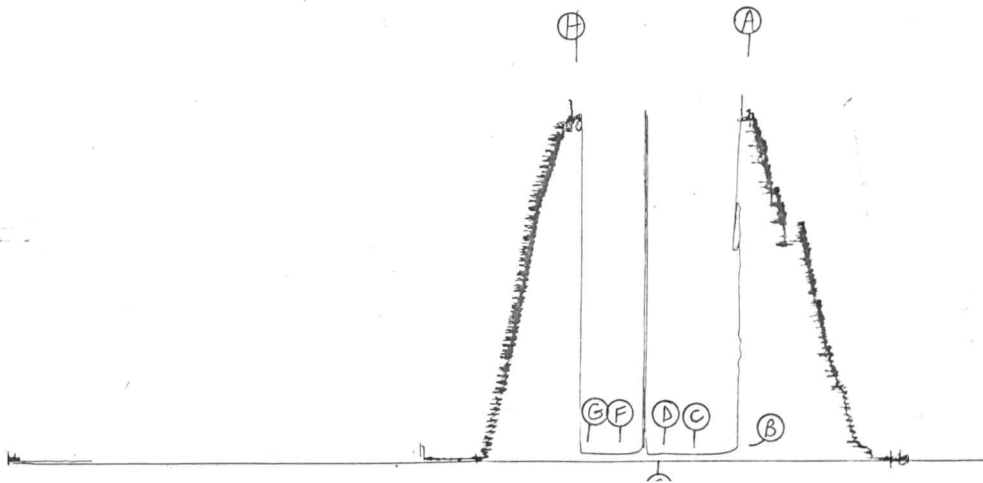
TIME SET PACKER(S): 2:30 PM TIME STARTED OFF BOTTOM: 4:30 PM  
WELL TEMPERATURE: 124 °F  
INITIAL HYDROSTATIC PRESSURE: (A) 2027 PSI  
INITIAL FLOW PERIOD MIN: 30 (B) 40 PSI TO (C) 40 PSI  
INITIAL CLOSED IN PERIOD MIN: 24 (D) 46 PSI  
FINAL FLOW PERIOD MIN: 30 (E) 40 PSI TO (F) 41 PSI  
FINAL CLOSED IN PERIOD MIN: 30 (G) 48 PSI  
FINAL HYDROSTATIC PRESSURE (H) 1988 PSI



TKT # 10194

10650  
DST5

I



TKT # 10194

2604  
D575

