

91

KANSAS

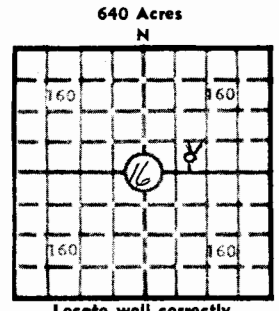
WELL COMPLETION REPORT AND DRILLER'S LOG

State Geological Survey

API No. 15 - 179 - 20,592 County Number WICHITA BRANCH

S. 16 T. 10 R. 26 W. Loc. 300' FSL 1710' FEL NE/4 County Sheridan

Operator: GEAR PETROLEUM CO., INC. Address: 300 Sutton Place, Wichita, Kansas 67202 Well No. 2 Lease Name Martin Footage Location 300 feet from (S) line 1710 feet from (E) line Principal Contractor Red Tiger Drilling Co. Geologist Roger Fisher Spud Date 4-20-81 Date Completed 4-28-81 Total Depth 4070 P.B.T.D. 3850 Directional Deviation Oil and/or Gas Purchaser N/A



Elev.: Gr. 2564 DF KB 2569

CASING RECORD

Report of all strings set - surface, intermediate, production, etc.

Table with 8 columns: Purpose of string, Size hole drilled, Size casing set (in O.D.), Weight lbs/ft., Setting depth, Type cement, Sacks, Type and percent additives. Rows include Surface and Production strings.

LINER RECORD

PERFORATION RECORD

Tables for Liner Record and Perforation Record. Liner Record columns: Top ft., Bottom ft., Sacks cement. Perforation Record columns: Shots per ft., Size & type, Depth interval.

TUBING RECORD

Table with 5 columns: Size, Setting depth, Packer set at, Shots per ft., Depth interval.

ACID, FRACTURE, SHOT, CEMENT SQUEEZE RECORD

Table with 2 columns: Amount and kind of material used, Depth interval treated. Includes entries for acid treatments and bridge plug.

INITIAL PRODUCTION

Form for Initial Production with fields for Date of first production, Producing method, Rate of production per 24 hours (Oil, Gas, Water), Gas-oil ratio, and Disposition of gas.

INSTRUCTIONS: As provided in KCC Rule 82-2-125, within 90 days after completion of a well, one completed copy of this Drillers Log shall be transmitted to the State Geological Survey of Kansas...

Operator
GEAR PETROLEUM CO., INC.

DESIGNATE TYPE OF COMP.: OIL, GAS,
DRY HOLE, SWDW, ETC.:

Well No. 2 Lease Name Martin SWDW

S 16 T 10 R 26 ^{EX} W

WELL LOG

Show all important zones of porosity and contents thereof; cored intervals, and all drill-stem tests, including depth interval tested, cushion used, time tool open, flowing and shut-in pressures, and recoveries.

SHOW GEOLOGICAL MARKERS, LOGS RUN,
OR OTHER DESCRIPTIVE INFORMATION.

FORMATION DESCRIPTION, CONTENTS, ETC.	TOP	BOTTOM	NAME	DEPTH
DST #1 "BC" zone, 30-60-45-90, Rec. 20' CO, 180' HOcm, 60' MWO, IFP 54-76, 109-142, 1109/1109. wtr-35,000 clorides	3842	3884	LOG TOPS	
			Topeka	3586 -1017
			Heebner	3800 -1231
			Toronto	3822 -1253
			Lansing	3840 -1271
DST #2 30-30-30-30, Rec. 65' OCM, IFP 54-54, 65-65 471/175	3884	3900	Stark	4030 -1461
			B/KC	4070 -1501
			RTD	4070 -1501
DST #3 10-40-30-30, Rec. 480' TM, 240' WM, 180' MW, IFP 319-361, 416-504, BHP 1713/1551	3883	3911		

USE ADDITIONAL SHEETS, IF NECESSARY, TO COMPLETE WELL RECORD.

Date Received	<i>Jim Thatcher</i>
	Jim Thatcher Engineer
	Signature
	Title
	6/29/81
	Date

8168L