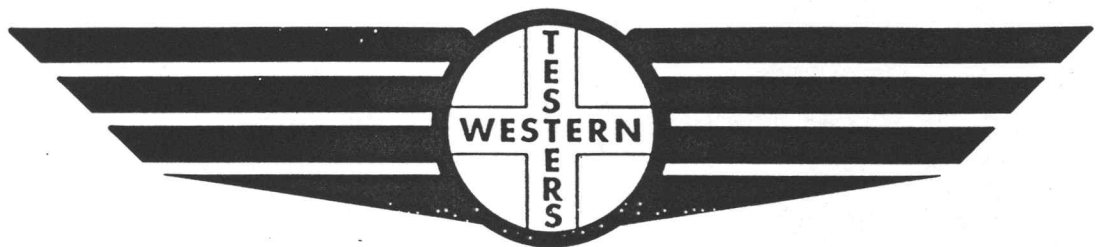


# FORMATION TEST REPORT



Home Office:

Wichita, Kansas 67201

P.O. Box 1599

Phone (316) 262-5861

COMPANY ENERGY EXPLORATION, INC. LEASE & WELL NO. STOLL #2 SEC. 1 TWP. 11S RGE. 32W TEST NO. 1 DATE 5/14/87

WESTERN TESTING CO. INC.  
SUBSURFACE PRESSURE SURVEY

DATE : 5-14-87 TICKET : 10254  
CUSTOMER : ENERGY EXPLORATION INC. LEASE : STOLL  
WELL : #2 TEST: 1 GEOLOGIST : K. HOWARD  
ELEVATION : 3038 FORMATION : L. K.C. "A"  
SECTION : 1 TOWNSHIP : 11S  
RANGE : 32W COUNTY : LOGAN STATE : KS  
GAUGE SN# : 6233 RANGE : 4000 CLOCK : 12

INTERVAL FROM : 4033 TO : 4050 TOTAL DEPTH : 405  
DEPTH OF SELECTIVE ZONE :  
PACKER DEPTH : 4028 SIZE : 6.75  
PACKER DEPTH : 4033 SIZE : 6075  
PACKER DEPTH : SIZE :  
PACKER DEPTH : SIZE :

DRILLING CON. : ABERCROMBIE #5  
MUD TYPE : CHEMICAL VISCOSITY : 38  
WEIGHT : 9.4 WATER LOSS (CC) : 9.6  
CHLORIDES (PPM) : 2000  
JARS-MAKE : SERIAL NUMBER :  
DID WELL FLOW ? : NO REVERSED OUT ? : NO

DRILL COLLAR LENGTH : 0 FT I.D. inch : 0.00  
WEIGHT PIPE LENGTH : 508 FT I.D. inch : 3.20  
DRILL PIPE LENGTH : 3505 FT I.D. inch : 3.80  
TEST TOOL LENGTH : 20 FT TOOL SIZE : 5.50  
ANCHOR LENGTH : 17 FT ANCHOR SIZE : 5.50  
SURFACE CHOKE SIZE : .75 IN BOTTOM CHOKE SIZE : .75  
MAIN HOLE SIZE : 7.875 IN TOOL JOINT SIZE : 4.5XH

BLOW COMMENT #1 : WEAK INCREASING BLOW TO 5" IN WATER  
BLOW COMMENT #2 : ON INITIAL FLOW PERIOD.  
BLOW COMMENT #3 : WEAK BLOW 2" IN WATER ON  
BLOW COMMENT #4 : FINAL FLOW PERIOD.



WESTERN TESTING CO. INC.  
WICHITA - KANSAS

Pressure Transient Report  
-----

COMPANY : ENERGY EXPLORATION INC.  
RIG : LOGAN-KS  
FIELD : STOLL  
WELL : #2  
DATE : 5-14-87  
GAUGE NO : 6233

OPERATIONAL COMMENTS

CHLORIDES 50000 PPM

COMPANY : ENERGY EXPLORATION INC.  
 WELL : #2  
 GAUGE # : 6233  
 DATE : 14/ 5/87

FIELD : STOLL  
 JOB # : 10254  
 DEPTH : 405  
 TEST :

DATA No.	REAL TIME HR:MN:SS	ELAPSE TIME DELTA HOURS	PRESSURE PSIG	TEMP DEG F	DELTA P Pi-P(i-1)
1	2:55: 0	0.000	41.000	129.00	0.000
2	2:59:59	0.083	41.000	129.00	0.000
3	3: 5: 0	0.167	41.000	129.00	0.000
4	3:10: 0	0.250	43.000	129.00	2.000
5	3:14:59	0.333	49.000	129.00	6.000
6	3:20: 0	0.417	58.000	129.00	9.000
7	3:25: 0	0.500	65.000	129.00	7.000
8	3:29:59	0.583	69.000	129.00	4.000
9	3:32:59	0.633	979.000	129.00	910.000
10	3:35:59	0.683	1236.000	129.00	257.000
11	3:38:59	0.733	1249.000	129.00	13.000
12	3:41:59	0.783	1254.000	129.00	5.000
13	3:44:59	0.833	1257.000	129.00	3.000
14	3:47:59	0.883	1259.000	129.00	2.000
15	3:50:59	0.933	1260.000	129.00	1.000
16	3:53:59	0.983	1261.000	129.00	1.000
17	3:56:59	1.033	1262.000	129.00	1.000
18	3:59:59	1.083	1263.000	129.00	1.000
19	4: 2:59	1.133	1264.000	129.00	1.000
20	4: 5:59	1.183	1265.000	129.00	1.000
21	4: 8:59	1.233	1266.000	129.00	1.000
22	4:11:59	1.283	1266.000	129.00	0.000
23	4:14:59	1.333	1266.000	129.00	0.000
24	4:17:59	1.383	1266.000	129.00	0.000
25	4:20:59	1.433	1266.000	129.00	0.000
26	4:23:59	1.483	1266.000	129.00	0.000
27	4:26:59	1.533	1266.000	129.00	0.000
28	4:29:59	1.583	1266.000	129.00	0.000
29	4:31: 0	1.600	91.000	129.00	-1175.000
30	4:34:59	1.667	91.000	129.00	0.000
31	4:40: 0	1.750	93.000	129.00	2.000
32	4:44:59	1.833	96.000	129.00	3.000
33	4:49:59	1.917	101.000	129.00	5.000
34	4:55: 0	2.000	109.000	129.00	8.000
35	4:59:59	2.083	115.000	129.00	6.000
36	5: 4:59	2.167	124.000	129.00	9.000
37	5:10: 0	2.250	131.000	129.00	7.000
38	5:14:59	2.333	138.000	129.00	7.000
39	5:19:59	2.417	146.000	129.00	8.000
40	5:25: 0	2.500	153.000	129.00	7.000
41	5:29:59	2.583	161.000	129.00	8.000
42	5:32:59	2.633	861.000	129.00	700.000
43	5:35:59	2.683	1227.000	129.00	366.000
44	5:38:59	2.733	1240.000	129.00	13.000
45	5:41:59	2.783	1246.000	129.00	6.000
46	5:44:59	2.833	1249.000	129.00	3.000
47	5:47:59	2.883	1252.000	129.00	3.000
48	5:50:59	2.933	1255.000	129.00	3.000
49	5:53:59	2.983	1257.000	129.00	2.000
50	5:56:59	3.033	1258.000	129.00	1.000
51	5:59:59	3.083	1259.000	129.00	1.000

COMPANY : ENERGY EXPLORATION INC.  
WELL : #2  
GAUGE # : 6233  
DATE : 14/ 5/87

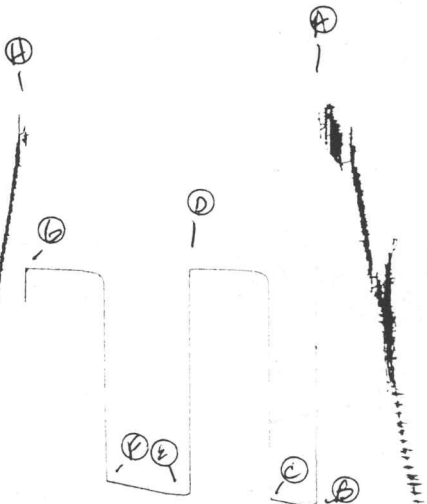
FIELD : STOLL  
JOB # : 10254  
DEPTH : 405  
TEST :

DATA No.	REAL TIME HR:MN:SS	ELAPSE TIME DELTA HOURS	PRESSURE PSIG	TEMP DEG F	DELTA P Pi-P(i-1)
53	6: 5:59	3.183	1261.000	129.00	1.000
54	6: 8:59	3.233	1262.000	129.00	1.000
55	6:11:59	3.283	1262.000	129.00	0.000
56	6:14:59	3.333	1262.000	129.00	0.000
57	6:17:59	3.383	1263.000	129.00	1.000
58	6:20:59	3.433	1263.000	129.00	0.000
59	6:23:59	3.483	1264.000	129.00	1.000
60	6:26:59	3.533	1264.000	129.00	0.000
61	6:29:59	3.583	1264.000	129.00	0.000

WESTERN TESTING CO. INC.

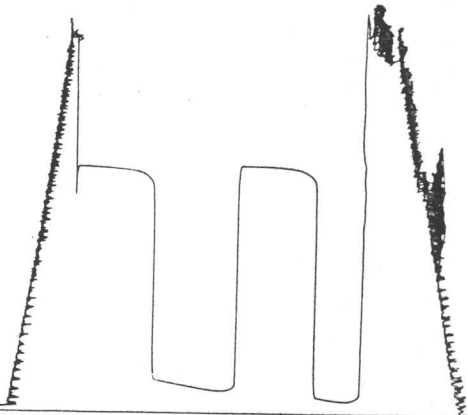
6233

Plot # 10254  
I

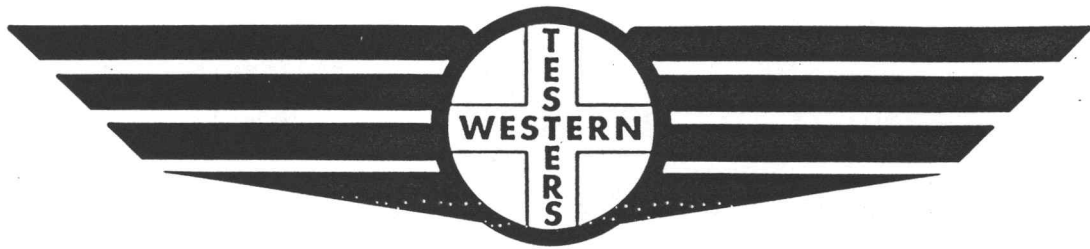


13400

St # 10254  
O



# FORMATION TEST REPORT



Home Office:

Wichita, Kansas 67201

P.O. Box 1599

Phone (316) 262-5861

COMPANY ENERGY EXPLORATION, INC. LEASE & WELL NO. STOLL #2 SEC. 1 TWP. 11S RGE. 32W TEST NO. 2 DATE 5/15/87

WESTERN TESTING CO. INC.  
SUBSURFACE PRESSURE SURVEY

DATE : 05-15-87 TICKET : 10255  
CUSTOMER : ENERGY EXPLORATION INC. LEASE : STOLL  
WELL : #2 TEST: 2 GEOLOGIST : K. HOWARD  
ELEVATION : 3038 FORMATION : L. K.C. - "E"  
SECTION : 1 TOWNSHIP : 11S  
RANGE : 32W COUNTY : LOGAN STATE : KS  
GAUGE SN# : 6233 RANGE : 4000 CLOCK : 12

INTERVAL FROM : 4109 TO : 4124 TOTAL DEPTH : 4124  
DEPTH OF SELECTIVE ZONE :  
PACKER DEPTH : 4104 SIZE : 6.75  
PACKER DEPTH : 4109 SIZE : 6.75  
PACKER DEPTH : SIZE :  
PACKER DEPTH : SIZE :

DRILLING CON. : ABERCROMBIE #5  
MUD TYPE : CHEMICAL VISCOSITY : 42  
WEIGHT : 9.4 WATER LOSS (CC) : 10.4  
CHLORIDES (PPM) : 2000  
JARS-MAKE : SERIAL NUMBER :  
DID WELL FLOW ? : NO REVERSED OUT ? : NO

DRILL COLLAR LENGTH : 0 FT I.D. inch : 0.00  
WEIGHT PIPE LENGTH : 508 FT I.D. inch : 3.20  
DRILL PIPE LENGTH : 3581 FT I.D. inch : 3.80  
TEST TOOL LENGTH : 20 FT TOOL SIZE : 5.50  
ANCHOR LENGTH : 15 FT ANCHOR SIZE : 5.50  
SURFACE CHOKE SIZE : .75 IN BOTTOM CHOKE SIZE : .75  
MAIN HOLE SIZE : 7.875 IN TOOL JOINT SIZE : 4.5XH

BLOW COMMENT #1 : FAIR BLOW 6" IN WATER ON INTIAL  
BLOW COMMENT #2 : FLOW PERIOD.  
BLOW COMMENT #3 : FAIR BLOW 5" IN WATER ON FINAL  
BLOW COMMENT #4 : FLOW PERIOD.



WESTERN TESTING CO. INC.  
WICHITA - KANSAS

Pressure Transient Report  
-----

COMPANY : ENERGY EXPLORATION INC.  
RIG : LOGAN-KS  
FIELD : STOLL #2  
WELL : #2  
DATE : 5-15-87  
GAUGE NO : 6233

OPERATIONAL COMMENTS

RECOVERED 180 FT. OF GAS ABOVE FLUID.  
CHLORIDES 3000 PPM

COMPANY : ENERGY EXPLORATION INC.  
 WELL : #2  
 GAUGE # : 6233  
 DATE : 15/ 5/87

FIELD : STOLL #2  
 JOB # : 10255  
 DEPTH : 4124  
 TEST :

DATA No.	REAL TIME HR:MN:SS	ELAPSE TIME DELTA HOURS	PRESSURE PSIG	TEMP DEG F	DELTA P Pi-P(i-1)
1	8: 5: 0	0.000	38.000	122.00	0.000
2	8: 9:59	0.083	38.000	122.00	0.000
3	8:15: 0	0.167	38.000	122.00	0.000
4	8:20: 0	0.250	46.000	122.00	8.000
5	8:24:59	0.333	51.000	122.00	5.000
6	8:30: 0	0.417	55.000	122.00	4.000
7	8:35: 0	0.500	61.000	122.00	6.000
8	8:38: 0	0.550	120.000	122.00	59.000
9	8:41: 0	0.600	471.000	122.00	351.000
10	8:44: 0	0.650	808.000	122.00	337.000
11	8:47: 0	0.700	867.000	122.00	59.000
12	8:50: 0	0.750	896.000	122.00	29.000
13	8:53: 0	0.800	915.000	122.00	19.000
14	8:56: 0	0.850	932.000	122.00	17.000
15	8:59: 0	0.900	945.000	122.00	13.000
16	9: 2: 0	0.950	954.000	122.00	9.000
17	9: 5: 0	1.000	962.000	122.00	8.000
18	9: 8: 0	1.050	971.000	122.00	9.000
19	9:11: 0	1.100	978.000	122.00	7.000
20	9:14: 0	1.150	985.000	122.00	7.000
21	9:17: 0	1.200	991.000	122.00	6.000
22	9:20: 0	1.250	996.000	122.00	5.000
23	9:23: 0	1.300	1002.000	122.00	6.000
24	9:26: 0	1.350	1004.000	122.00	2.000
25	9:29: 0	1.400	1011.000	122.00	7.000
26	9:32: 0	1.450	1017.000	122.00	6.000
27	9:35: 0	1.500	1022.000	122.00	5.000
28	9:38: 0	1.550	1026.000	122.00	4.000
29	9:39: 0	1.567	86.000	122.00	-940.000
30	9:42:59	1.633	86.000	122.00	0.000
31	9:48: 0	1.717	86.000	122.00	0.000
32	9:53: 0	1.800	89.000	122.00	3.000
33	9:57:59	1.883	92.000	122.00	3.000
34	10: 3: 0	1.967	99.000	122.00	7.000
35	10: 8: 0	2.050	104.000	122.00	5.000
36	10:12:59	2.133	109.000	122.00	5.000
37	10:18: 0	2.217	114.000	122.00	5.000
38	10:23: 0	2.300	120.000	122.00	6.000
39	10:27:59	2.383	126.000	122.00	6.000
40	10:33: 0	2.467	131.000	122.00	5.000
41	10:38: 0	2.550	136.000	122.00	5.000
42	10:41: 0	2.600	440.000	122.00	304.000
43	10:43:59	2.650	708.000	122.00	268.000
44	10:47: 0	2.700	766.000	122.00	58.000
45	10:50: 0	2.750	801.000	122.00	35.000
46	10:53: 0	2.800	821.000	122.00	20.000
47	10:56: 0	2.850	840.000	122.00	19.000
48	10:58:59	2.900	854.000	122.00	14.000
49	11: 2: 0	2.950	867.000	122.00	13.000
50	11: 5: 0	3.000	877.000	122.00	10.000
51	11: 8: 0	3.050	885.000	122.00	8.000
52	11:11: 0	3.100	895.000	122.00	10.000

COMPANY : ENERGY EXPLORATION INC.  
WELL : #2  
GAUGE # : 6233  
DATE : 15/ 5/87

FIELD : STOLL #2  
JOB # : 10255  
DEPTH : 4124  
TEST :

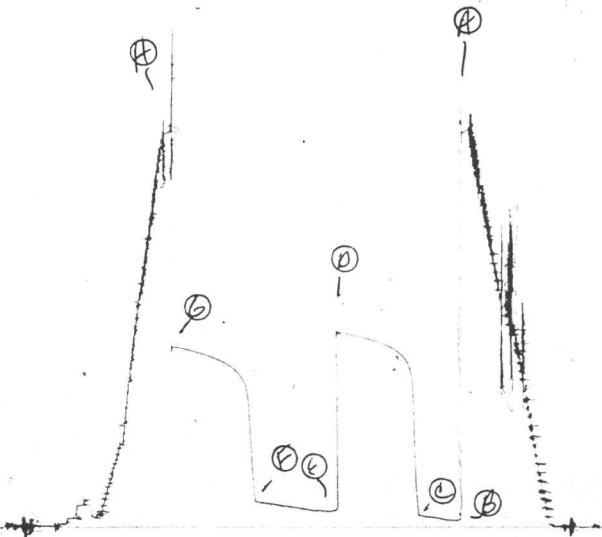
DATA No.	REAL TIME HR:MN:SS	ELAPSE TIME DELTA HOURS	PRESSURE PSIG	TEMP DEG F	DELTA P Pi-P(i-1)
53	11:14: 0	3.150	901.000	122.00	6.000
54	11:16:59	3.200	907.000	122.00	6.000
55	11:20: 0	3.250	914.000	122.00	7.000
56	11:23: 0	3.300	921.000	122.00	7.000
57	11:26: 0	3.350	925.000	122.00	4.000
58	11:29: 0	3.400	933.000	122.00	8.000
59	11:31:59	3.450	936.000	122.00	3.000
60	11:35: 0	3.500	940.000	122.00	4.000
61	11:38: 0	3.550	943.000	122.00	3.000

WESTERN TESTING CO. INC.

6233

JKt # 10255

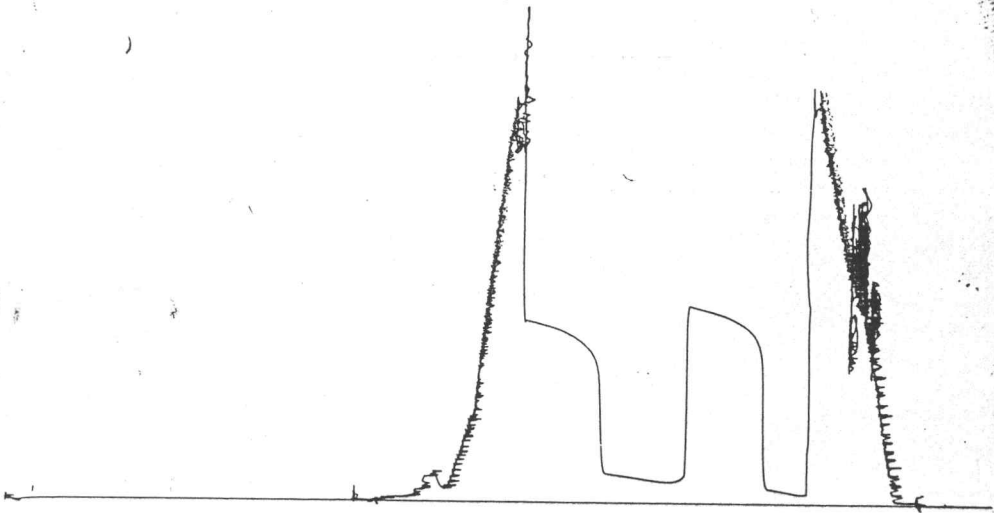
I



13460

JK # 10255

0



# FORMATION TEST REPORT



Home Office:

Wichita, Kansas 67201

P.O. Box 1599

Phone (316) 262-5861

COMPANY ENERGY EXPLORATION, INC. LEASE & WELL NO. STOLL #2 SEC. 1 TWP. 11S RGE. 32W TEST NO. 3 DATE 5/16/87

WESTERN TESTING CO. INC.  
SUBSURFACE PRESSURE SURVEY

DATE : 5-16-87 TICKET : 10256  
CUSTOMER : ENERGY EXPLORATION INC. LEASE : STOLL  
WELL : #2 TEST: 3 GEOLOGIST : K. HOWARD  
ELEVATION : 3038 FORMATION : L. K.C. H-I-J  
SECTION : 1 TOWNSHIP : 11S  
RANGE : 32W COUNTY : LOGAN STATE : KS  
GAUGE SN# : 6233 RANGE : 4000 CLOCK : 12

INTERVAL FROM : 4172 TO : 4256 TOTAL DEPTH : 4256  
DEPTH OF SELECTIVE ZONE :  
PACKER DEPTH : 416 SIZE : 6.75  
PACKER DEPTH : 4172 SIZE : 6.75  
PACKER DEPTH : SIZE :  
PACKER DEPTH : SIZE :

DRILLING CON. : ABERCROMBIE #5  
MUD TYPE : CHEMICAL VISCOSITY : 46  
WEIGHT : 9.4 WATER LOSS (CC) : 10.0  
CHLORIDES (PPM) : 2000  
JARS-MAKE : NO SERIAL NUMBER :  
DID WELL FLOW ? : NO REVERSED OUT ? : NO

DRILL COLLAR LENGTH : 0 FT I.D. inch : 0.00  
WEIGHT PIPE LENGTH : 508 FT I.D. inch : 3.20  
DRILL PIPE LENGTH : 3644 FT I.D. inch : 3.80  
TEST TOOL LENGTH : 20 FT TOOL SIZE : 5.50  
ANCHOR LENGTH : 84 FT ANCHOR SIZE : 5.50  
SURFACE CHOKE SIZE : .75 IN BOTTOM CHOKE SIZE : .75  
MAIN HOLE SIZE : 7.875 IN TOOL JOINT SIZE : 4.5XH

BLOW COMMENT #1 : WEAK BLOW .75" IN WATER  
BLOW COMMENT #2 : ON INITIAL FLOW PERIOD.  
BLOW COMMENT #3 : WEAK BLOW .75" IN WATER ON  
BLOW COMMENT #4 : FINAL FLOW PERIOD.

RECOVERED : 10 FT OF: OIL CUT MUD 10%O 90% M  
RECOVERED : 90 FT OF: GASSY OIL CUT WTRY MUD  
RECOVERED : 0 FT OF: 15%O 40% G 5%W 40%M

Total Barrels Fluid = 0.99  
Total Fluid Prod Rate = 15.91 BFPD  
Indicated Oil Rate = 2.39 BOPD  
Indicated Wtr Rate = 1.11 BWPD  
Corrected Oil Rate = 24.22 BOPD  
Corrected Wtr Rate = 11.30 BWPD

REMARK 1 : SOME PLUGGING ACTION ON FINAL FLOW PERIOD.  
REMARK 2 : RECOVERED 90 FT. OF GAS ABOVE FLUID.  
REMARK 3 : CHLORIDES 11000 PPM  
REMARK 4 :

SET PACKER(S) : 8:06 AM TIME STARTED OFF BOTTOM : 11:35 AM  
WELL TEMPERATURE : 124  
INITIAL HYDROSTATIC PRESSURE (A) 2102  
INITIAL FLOW PERIOD MIN: 30 (B) 43 PSI TO (C) : 50  
INITIAL CLOSED IN PERIOD MIN: 63 (D) 1160  
FINAL FLOW PERIOD MIN: 60 (E) 99 PSI TO (F) : 99  
FINAL CLOSED IN PERIOD MIN: 60 (G) 1102  
FINAL HYDROSTATIC PRESSURE (H) 2088

WESTERN TESTING CO. INC.  
WICHITA - KANSAS

Pressure Transient Report  
-----

COMPANY : ENERGY EXPLORATION INC.  
RIG : LOGAN-KS  
FIELD : STOLL  
WELL : #2  
DATE : 5-16-87  
GAUGE NO : 6233

OPERATIONAL COMMENTS

SOME PLUGGING ACTION ON FINAL FLOW PERIOD.  
RECOVERED 90 FT. OF GAS ABOVE FLUID.  
CHLORIDES 11000 PPM

COMPANY : ENERGY EXPLORATION INC.  
 WELL : #2  
 GAUGE # : 6233  
 DATE : 16/ 5/87

FIELD : STOLL  
 JOB # : 10256  
 DEPTH : 4256  
 TEST : SOME PLUGGING ACTION ON  
 FINAL FLOW PERIOD.

DATA No.	REAL TIME HR:MN:SS	ELAPSE TIME DELTA HOURS	PRESSURE PSIG	TEMP DEG F	DELTA P Pi-P(i-1)
1	8: 5: 0	0.000	43.000	124.00	0.000
2	8: 9: 59	0.083	43.000	124.00	0.000
3	8: 15: 0	0.167	43.000	124.00	0.000
4	8: 20: 0	0.250	43.000	124.00	0.000
5	8: 24: 59	0.333	45.000	124.00	2.000
6	8: 30: 0	0.417	47.000	124.00	2.000
7	8: 35: 0	0.500	50.000	124.00	3.000
8	8: 38: 0	0.550	55.000	124.00	5.000
9	8: 41: 0	0.600	67.000	124.00	12.000
10	8: 44: 0	0.650	98.000	124.00	31.000
11	8: 47: 0	0.700	141.000	124.00	43.000
12	8: 50: 0	0.750	217.000	124.00	76.000
13	8: 53: 0	0.800	352.000	124.00	135.000
14	8: 56: 0	0.850	522.000	124.00	170.000
15	8: 59: 0	0.900	673.000	124.00	151.000
16	9: 2: 0	0.950	798.000	124.00	125.000
17	9: 5: 0	1.000	880.000	124.00	82.000
18	9: 8: 0	1.050	944.000	124.00	64.000
19	9: 11: 0	1.100	990.000	124.00	46.000
20	9: 14: 0	1.150	1026.000	124.00	36.000
21	9: 17: 0	1.200	1055.000	124.00	29.000
22	9: 20: 0	1.250	1076.000	124.00	21.000
23	9: 23: 0	1.300	1096.000	124.00	20.000
24	9: 26: 0	1.350	1114.000	124.00	18.000
25	9: 29: 0	1.400	1128.000	124.00	14.000
26	9: 32: 0	1.450	1140.000	124.00	12.000
27	9: 35: 0	1.500	1150.000	124.00	10.000
28	9: 38: 0	1.550	1160.000	124.00	10.000
29	9: 39: 0	1.567	99.000	124.00	-1061.000
30	9: 42: 59	1.633	99.000	124.00	0.000
31	9: 48: 0	1.717	99.000	124.00	0.000
32	9: 53: 0	1.800	99.000	124.00	0.000
33	9: 57: 59	1.883	99.000	124.00	0.000
34	10: 3: 0	1.967	99.000	124.00	0.000
35	10: 8: 0	2.050	99.000	124.00	0.000
36	10: 12: 59	2.133	99.000	124.00	0.000
37	10: 18: 0	2.217	99.000	124.00	0.000
38	10: 23: 0	2.300	99.000	124.00	0.000
39	10: 27: 59	2.383	99.000	124.00	0.000
40	10: 33: 0	2.467	99.000	124.00	0.000
41	10: 38: 0	2.550	99.000	124.00	0.000
42	10: 41: 0	2.600	99.000	124.00	0.000
43	10: 43: 59	2.650	107.000	124.00	8.000
44	10: 47: 0	2.700	158.000	124.00	51.000
45	10: 50: 0	2.750	234.000	124.00	76.000
46	10: 53: 0	2.800	347.000	124.00	113.000
47	10: 56: 0	2.850	481.000	124.00	134.000
48	10: 58: 59	2.900	612.000	124.00	131.000
49	11: 2: 0	2.950	719.000	124.00	107.000
50	11: 5: 0	3.000	806.000	124.00	87.000
51	11: 8: 0	3.050	872.000	124.00	66.000
52	11: 11: 0	3.100	919.000	124.00	47.000

COMPANY : ENERGY EXPLORATION INC.  
WELL : #2  
GAUGE # : 6233  
DATE : 16/ 5/87

FIELD : STOLL  
JOB # : 10256  
DEPTH : 4256  
TEST : SOME PLUGGING ACTION ON  
FINAL FLOW PERIOD.

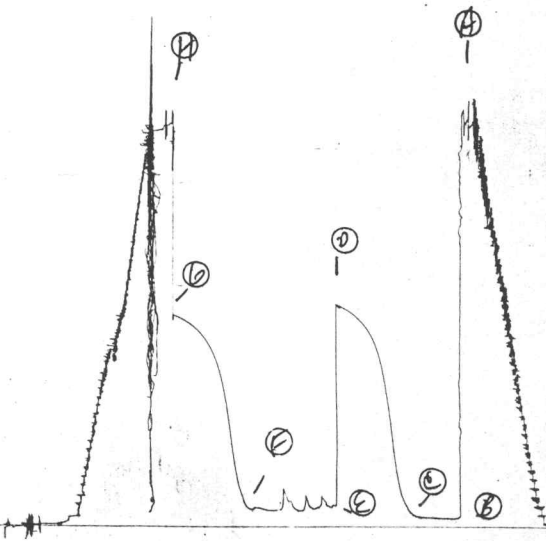
DATA No.	REAL TIME HR:MN:SS	ELAPSE TIME DELTA HOURS	PRESSURE PSIG	TEMP DEG F	DELTA P Pi-P(i-1)
53	11:14: 0	3.150	958.000	124.00	39.000
54	11:16:59	3.200	990.000	124.00	32.000
55	11:20: 0	3.250	1016.000	124.00	26.000
56	11:23: 0	3.300	1035.000	124.00	19.000
57	11:26: 0	3.350	1054.000	124.00	19.000
58	11:29: 0	3.400	1068.000	124.00	14.000
59	11:31:59	3.450	1081.000	124.00	13.000
60	11:35: 0	3.500	1092.000	124.00	11.000
61	11:38: 0	3.550	1102.000	124.00	10.000

WESTERN TESTING CO. INC.

603

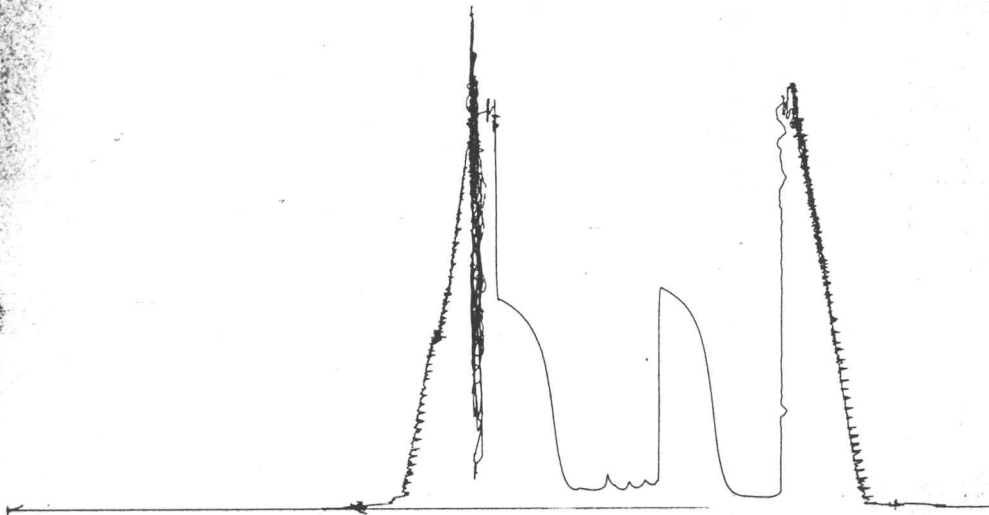
JKT # 10256

I

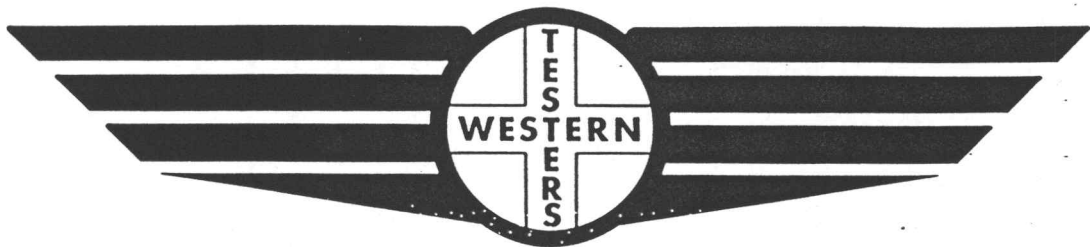


13460

JKt # 10256



# FORMATION TEST REPORT



Home Office:

Wichita, Kansas 67201

P.O. Box 1599

Phone (316) 262-5861

COMPANY ENERGY EXPLORATION, INC. LEASE & WELL NO. STOLL #2 SEC. 1 TWP. 11S RGE. 32W TEST NO. 4 DATE 5/16/87

WESTERN TESTING CO. INC.  
SUBSURFACE PRESSURE SURVEY

DATE : 5-16-87 TICKET : 10257  
CUSTOMER : ENERGY EXPLORATION INC. LEASE : STOLL  
WELL : #2 TEST: 4 GEOLOGIST : K. HOWARD  
ELEVATION : 3033 GS FORMATION : L-KC 'K'  
SECTION : 1 TOWNSHIP : 11S  
RANGE : 32W COUNTY : LOGAN STATE : KANSAS  
GAUGE SN# : 6233 RANGE : 4000 CLOCK : 12

INTERVAL FROM : 4254 TO : 4291 TOTAL DEPTH : 4291  
DEPTH OF SELECTIVE ZONE :  
PACKER DEPTH : 4249 SIZE : 6.75  
PACKER DEPTH : 4254 SIZE : 6.75  
PACKER DEPTH : SIZE :  
PACKER DEPTH : SIZE :

DRILLING CON. : ABERCROMBIE RIG #5  
MUD TYPE : CHEMICAL VISCOSITY : 46  
WEIGHT : 9.4 WATER LOSS (CC) : 10.0  
CHLORIDES (PPM) : 2000  
JARS-MAKE : NO SERIAL NUMBER :  
DID WELL FLOW ? : NO REVERSED OUT ? : NO

DRILL COLLAR LENGTH : 0 FT I.D. inch : 0.00  
WEIGHT PIPE LENGTH : 508 FT I.D. inch : 3.20  
DRILL PIPE LENGTH : 3726 FT I.D. inch : 3.80  
TEST TOOL LENGTH : 20 FT TOOL SIZE : 5.50  
ANCHOR LENGTH : 37 FT ANCHOR SIZE : 5.50  
SURFACE CHOKE SIZE : .75 IN BOTTOM CHOKE SIZE : .75  
MAIN HOLE SIZE : 7.875 IN TOOL JOINT SIZE : 4.5XH

BLOW COMMENT #1 : INITIAL FLOW-WEAK STEADY BLOW-1/2" IN WATER.  
BLOW COMMENT #2 : FINAL FLOW-WEAK BLOW-2" IN WATER.  
BLOW COMMENT #3 :  
BLOW COMMENT #4 :

RECOVERED : 60 FT OF: OIL CUT MUD  
10% OIL-90% MUD  
CHLORIDES: 3000 PPM

Total Barrels Fluid = 0.60  
Total Fluid Prod Rate = 9.55 BFPD  
Indicated Oil Rate = 0.95 BOPD  
Indicated Wtr Rate = 0.80 BWPD

REMARK 1 :  
REMARK 2 :  
REMARK 3 :  
REMARK 4 :

SET PACKER(S) : 10:10 PM  
WELL TEMPERATURE : 124  
INITIAL HYDROSTATIC PRESSURE (A) 2177  
INITIAL FLOW PERIOD MIN: 30 (B) 42 PSI TO (C) : 42  
INITIAL CLOSED IN PERIOD MIN: 60 (D) 220  
FINAL FLOW PERIOD MIN: 60 (E) 43 PSI TO (F) : 43  
FINAL CLOSED IN PERIOD MIN: 60 (G) 180  
FINAL HYDROSTATIC PRESSURE (H) 2135

WESTERN TESTING CO. INC.  
WICHITA - KANSAS

Pressure Transient Report

COMPANY : ENERGY EXPLORATION INC.  
RIG : LOGAN-KANSAS  
FIELD : STOLL  
WELL : #2  
DATE : 5-16-87  
GAUGE NO : 6233

OPERATIONAL COMMENTS

COMPANY : ENERGY EXPLORATION INC.  
 WELL : #2  
 GAUGE # : 6233  
 DATE : 16/ 5/87

FIELD : STOLL  
 JOB # : 10257  
 DEPTH : 4291  
 TEST :

DATA No.	REAL TIME HR:MN:SS	ELAPSE TIME DELTA HOURS	PRESSURE PSIG	TEMP DEG F	DELTA P Pi-P(i-1)
1	10:10: 0	0.000	42.000	124.00	0.000
2	10:14:59	0.083	42.000	124.00	0.000
3	10:20: 0	0.167	42.000	124.00	0.000
4	10:25: 0	0.250	42.000	124.00	0.000
5	10:29:59	0.333	42.000	124.00	0.000
6	10:35: 0	0.417	42.000	124.00	0.000
7	10:40: 0	0.500	42.000	124.00	0.000
8	10:43: 0	0.550	44.000	124.00	2.000
9	10:46: 0	0.600	46.000	124.00	2.000
10	10:49: 0	0.650	48.000	124.00	2.000
11	10:52: 0	0.700	50.000	124.00	2.000
12	10:55: 0	0.750	52.000	124.00	2.000
13	10:58: 0	0.800	57.000	124.00	5.000
14	11: 1: 0	0.850	62.000	124.00	5.000
15	11: 4: 0	0.900	69.000	124.00	7.000
16	11: 7: 0	0.950	75.000	124.00	6.000
17	11:10: 0	1.000	84.000	124.00	9.000
18	11:13: 0	1.050	92.000	124.00	8.000
19	11:16: 0	1.100	102.000	124.00	10.000
20	11:19: 0	1.150	110.000	124.00	8.000
21	11:22: 0	1.200	120.000	124.00	10.000
22	11:25: 0	1.250	131.000	124.00	11.000
23	11:28: 0	1.300	145.000	124.00	14.000
24	11:31: 0	1.350	159.000	124.00	14.000
25	11:34: 0	1.400	174.000	124.00	15.000
26	11:37: 0	1.450	191.000	124.00	17.000
27	11:40: 0	1.500	220.000	124.00	29.000
28	11:41: 0	1.517	43.000	124.00	-177.000
29	11:44:59	1.583	43.000	124.00	0.000
30	11:50: 0	1.667	43.000	124.00	0.000
31	11:55: 0	1.750	43.000	124.00	0.000
32	11:59:59	1.833	43.000	124.00	0.000
33	12: 5: 0	1.917	43.000	124.00	0.000
34	12:10: 0	2.000	43.000	124.00	0.000
35	12:14:59	2.083	43.000	124.00	0.000
36	12:20: 0	2.167	43.000	124.00	0.000
37	12:25: 0	2.250	43.000	124.00	0.000
38	12:29:59	2.333	43.000	124.00	0.000
39	12:35: 0	2.417	43.000	124.00	0.000
40	12:40: 0	2.500	43.000	124.00	0.000
41	12:43: 0	2.550	43.000	124.00	0.000
42	12:46: 0	2.600	43.000	124.00	0.000
43	12:49: 0	2.650	45.000	124.00	2.000
44	12:52: 0	2.700	48.000	124.00	3.000
45	12:55: 0	2.750	52.000	124.00	4.000
46	12:58: 0	2.800	57.000	124.00	5.000
47	13: 1: 0	2.850	62.000	124.00	5.000
48	13: 4: 0	2.900	66.000	124.00	4.000
49	13: 7: 0	2.950	70.000	124.00	4.000
50	13:10: 0	3.000	76.000	124.00	6.000
51	13:13: 0	3.050	82.000	124.00	6.000
52	13:16: 0	3.100	90.000	124.00	8.000

COMPANY : ENERGY EXPLORATION INC.  
WELL : #2  
GAUGE # : 6233  
DATE : 16/ 5/87

FIELD : STOLL  
JOB # : 10257  
DEPTH : 4291  
TEST :

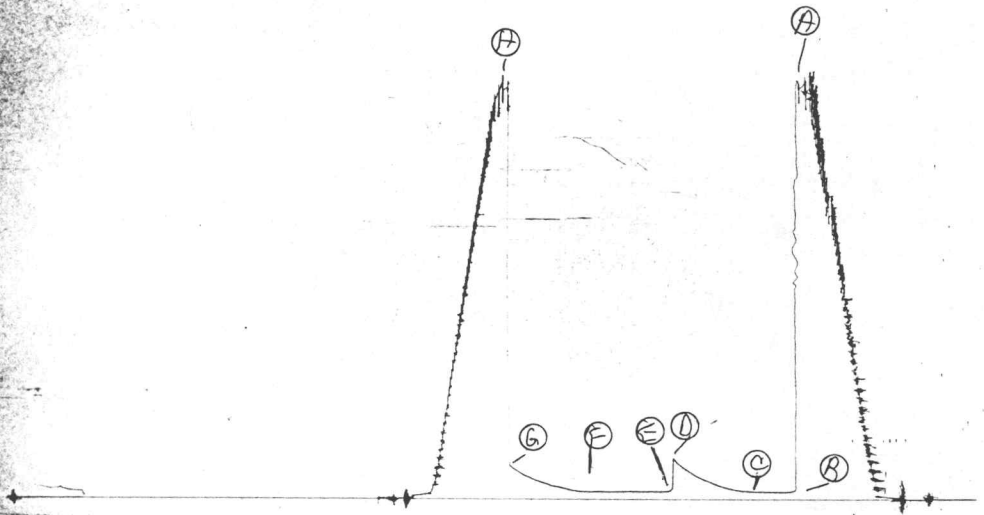
DATA No.	REAL TIME HR:MN:SS	ELAPSE TIME DELTA HOURS	PRESSURE PSIG	TEMP DEG F	DELTA P Pi-P(i-1)
53	13:19: 0	3.150	98.000	124.00	8.000
54	13:22: 0	3.200	105.000	124.00	7.000
55	13:25: 0	3.250	115.000	124.00	10.000
56	13:28: 0	3.300	123.000	124.00	8.000
57	13:31: 0	3.350	133.000	124.00	10.000
58	13:34: 0	3.400	146.000	124.00	13.000
59	13:37: 0	3.450	165.000	124.00	19.000
60	13:40: 0	3.500	180.000	124.00	15.000

WESTERN TESTING CO. INC.

6233

TKT 10251

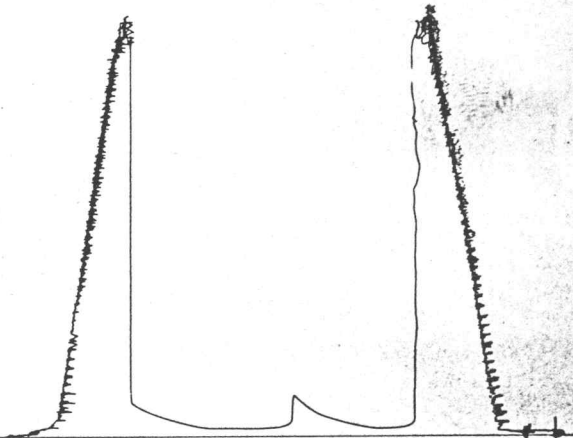
I



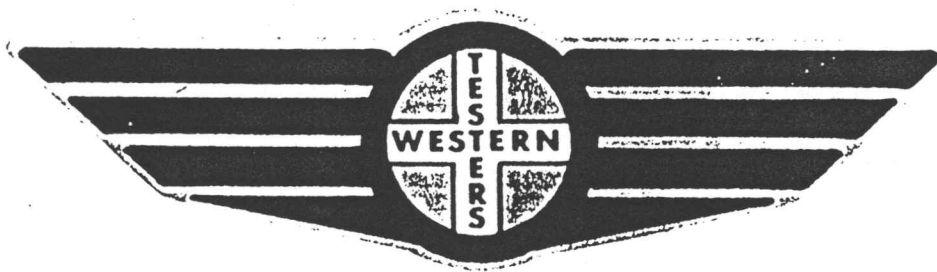
13400

TKF 10257

0



# FORMATION TEST REPORT



Home Office:

Wichita, Kansas 67201

P.O. Box 1599

Phone (316) 262-5861

COMPANY ENERGY EXPLORATION, INC. LEASE & WELL NO. STOLL #2 SEC. 1 TWP. 11S RGE. 32WEST NO. 5 DATE 5/17/87

WESTERN TESTING CO. INC.  
SUBSURFACE PRESSURE SURVEY

DATE : 5-17-87 TICKET : 10258  
CUSTOMER : ENERGY EXPLORATION INC. LEASE : STOLL  
WELL : #2 TEST: 5 GEOLOGIST : K. HOWARD  
ELEVATION : 3033 GS FORMATION : L-KC-L-LEN-ALTA  
SECTION : 1 TOWNSHIP : 11S  
RANGE : 32W COUNTY : LOGAN STATE : KANSAS  
GAUGE SN# : 6233 RANGE : 4000 CLOCK : 12

INTERVAL FROM : 4295 TO : 4430 TOTAL DEPTH : 4430  
DEPTH OF SELECTIVE ZONE :  
PACKER DEPTH : 4290 SIZE : 6.75  
PACKER DEPTH : 4295 SIZE : 6.75  
PACKER DEPTH : SIZE :  
PACKER DEPTH : SIZE :

DRILLING CON. : ABERCROMBIE RIG #5  
MUD TYPE : CHEMICAL VISCOSITY : 45  
WEIGHT : 9.3 WATER LOSS (CC) : 11.2  
CHLORIDES (PPM) : 2500  
JARS-MAKE : NO SERIAL NUMBER :  
DID WELL FLOW ? : NO REVERSED OUT ? : NO

DRILL COLLAR LENGTH : 0 FT I.D. inch : 0.00  
WEIGHT PIPE LENGTH : 412 FT I.D. inch : 3.20  
DRILL PIPE LENGTH : 3863 FT I.D. inch : 3.80  
TEST TOOL LENGTH : 20 FT TOOL SIZE : 5.50  
ANCHOR LENGTH : 135 FT ANCHOR SIZE : 5.50  
SURFACE CHOKE SIZE : .75 IN BOTTOM CHOKE SIZE : .75  
MAIN HOLE SIZE : 7.875 IN TOOL JOINT SIZE : 4.5 XH

BLOW COMMENT #1 : INITIAL FLOW-STRONG BLOW-BOTTOM OF BUCKET IN 12 MINUTES  
BLOW COMMENT #2 : FINAL FLOW-STRONG BLOW-BOTTOM OF BUCKET IN 4 MINUTES.  
BLOW COMMENT #3 :  
BLOW COMMENT #4 :

RECOVERED : 230 FT OF: OIL GRAVITY 34 @ 60 DEG.F.  
RECOVERED : 100 FT OF: OIL CUT GASSY WATERY MUD  
10% OIL-40% GAS-25% WTR-25% MUD

CHLORIDES: 18000 PPM

Total Barrels Fluid = 3.28  
Total Fluid Prod Rate = 52.52 BFPD  
Indicated Oil Rate = 38.20 BOPD  
Indicated Wtr Rate = 3.98 BWPD  
Corrected Oil Rate = 51.16 BOPD  
Corrected Wtr Rate = 5.33 BWPD

REMARK 1 :  
REMARK 2 : RECOVERED 810 FEET OF GAS ABOVE FLUID.  
REMARK 3 :  
REMARK 4 :

SET PACKER(S) : 9:10 PM TIME STARTED OFF BOTTOM : 12:40 PM  
WELL TEMPERATURE : 126  
INITIAL HYDROSTATIC PRESSURE (A) 2166  
INITIAL FLOW PERIOD MIN: 30 (B) 34 PSI TO (C) : 74  
INITIAL CLOSED IN PERIOD MIN: 60 (D) 1373  
FINAL FLOW PERIOD MIN: 60 (E) 103 PSI TO (F) : 153  
FINAL CLOSED IN PERIOD MIN: 60 (G) 1360  
FINAL HYDROSTATIC PRESSURE (H) 2154

WESTERN TESTING CO. INC.  
WICHITA - KANSAS

Pressure Transient Report

COMPANY : ENERGY EXPLORATION INC.  
RIG : LOGAN-KANSAS  
FIELD : STOLL  
WELL : #2  
DATE : 5-17-87  
GAUGE NO : 6233

OPERATIONAL COMMENTS

RECOVERED 810 FEET OF GAS ABOVE FLUID.

COMPANY : ENERGY EXPLORATION INC.  
 WELL : #2  
 GAUGE # : 6233  
 DATE : 17/ 5/87

FIELD : STOLL  
 JOB # : 10258  
 DEPTH : 4430  
 TEST :

DATA No.	REAL TIME HR:MN:SS	ELAPSE TIME DELTA HOURS	PRESSURE PSIG	TEMP DEG F	DELTA P Pi-P(i-1)
1	9:10: 0	0.000	34.000	126.00	0.000
2	9:14:59	0.083	38.000	126.00	4.000
3	9:20: 0	0.167	44.000	126.00	6.000
4	9:25: 0	0.250	49.000	126.00	5.000
5	9:29:59	0.333	56.000	126.00	7.000
6	9:35: 0	0.417	66.000	126.00	10.000
7	9:40: 0	0.500	74.000	126.00	8.000
8	9:43: 0	0.550	212.000	126.00	138.000
9	9:46: 0	0.600	790.000	126.00	578.000
10	9:49: 0	0.650	1177.000	126.00	387.000
11	9:52: 0	0.700	1281.000	126.00	104.000
12	9:55: 0	0.750	1313.000	126.00	32.000
13	9:58: 0	0.800	1332.000	126.00	19.000
14	10: 1: 0	0.850	1343.000	126.00	11.000
15	10: 4: 0	0.900	1349.000	126.00	6.000
16	10: 7: 0	0.950	1354.000	126.00	5.000
17	10:10: 0	1.000	1359.000	126.00	5.000
18	10:13: 0	1.050	1361.000	126.00	2.000
19	10:16: 0	1.100	1363.000	126.00	2.000
20	10:19: 0	1.150	1365.000	126.00	2.000
21	10:22: 0	1.200	1367.000	126.00	2.000
22	10:25: 0	1.250	1368.000	126.00	1.000
23	10:28: 0	1.300	1369.000	126.00	1.000
24	10:31: 0	1.350	1370.000	126.00	1.000
25	10:34: 0	1.400	1371.000	126.00	1.000
26	10:37: 0	1.450	1372.000	126.00	1.000
27	10:40: 0	1.500	1373.000	126.00	1.000
28	10:41: 0	1.517	103.000	126.00	-1270.000
29	10:44:59	1.583	103.000	126.00	0.000
30	10:50: 0	1.667	104.000	126.00	1.000
31	10:55: 0	1.750	107.000	126.00	3.000
32	10:59:59	1.833	108.000	126.00	1.000
33	11: 5: 0	1.917	112.000	126.00	4.000
34	11:10: 0	2.000	118.000	126.00	6.000
35	11:14:59	2.083	127.000	126.00	9.000
36	11:20: 0	2.167	132.000	126.00	5.000
37	11:25: 0	2.250	137.000	126.00	5.000
38	11:29:59	2.333	141.000	126.00	4.000
39	11:35: 0	2.417	148.000	126.00	7.000
40	11:40: 0	2.500	153.000	126.00	5.000
41	11:43: 0	2.550	605.000	126.00	452.000
42	11:46: 0	2.600	1030.000	126.00	425.000
43	11:49: 0	2.650	1235.000	126.00	205.000
44	11:52: 0	2.700	1286.000	126.00	51.000
45	11:55: 0	2.750	1312.000	126.00	26.000
46	11:58: 0	2.800	1323.000	126.00	11.000
47	12: 1: 0	2.850	1330.000	126.00	7.000
48	12: 4: 0	2.900	1336.000	126.00	6.000
49	12: 7: 0	2.950	1341.000	126.00	5.000
50	12:10: 0	3.000	1344.000	126.00	3.000
51	12:13: 0	3.050	1347.000	126.00	3.000
52	12:16: 0	3.100	1349.000	126.00	2.000

COMPANY : ENERGY EXPLORATION INC.  
WELL : #2  
GAUGE #, : 6233  
DATE : 17/ 5/87

FIELD : STOLL  
JOB # : 10258,  
DEPTH : 4430  
TEST :

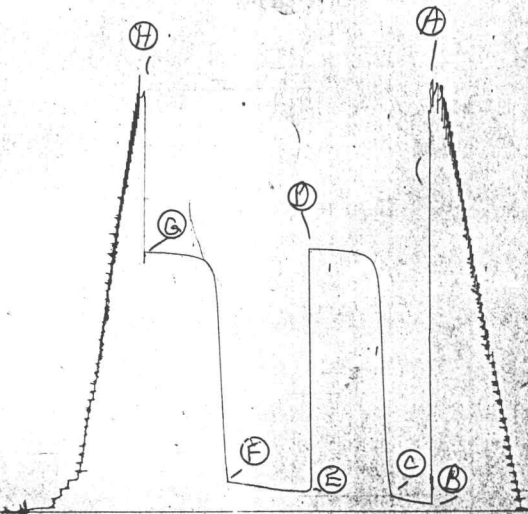
DATA No.	REAL TIME HR:MN:SS	ELAPSE TIME DELTA HOURS	PRESSURE PSIG	TEMP DEG F	DELTA P Pi-P(i-1)
53	12:19: 0	3.150	1351.000	126.00	2.000
54	12:22: 0	3.200	1353.000	126.00	2.000
55	12:25: 0	3.250	1355.000	126.00	2.000
56	12:28: 0	3.300	1356.000	126.00	1.000
57	12:31: 0	3.350	1357.000	126.00	1.000
58	12:34: 0	3.400	1358.000	126.00	1.000
59	12:37: 0	3.450	1359.000	126.00	1.000
60	12:40: 0	3.500	1360.000	126.00	1.000

WESTERN TESTING CO. INC.

6833

TK4 10258

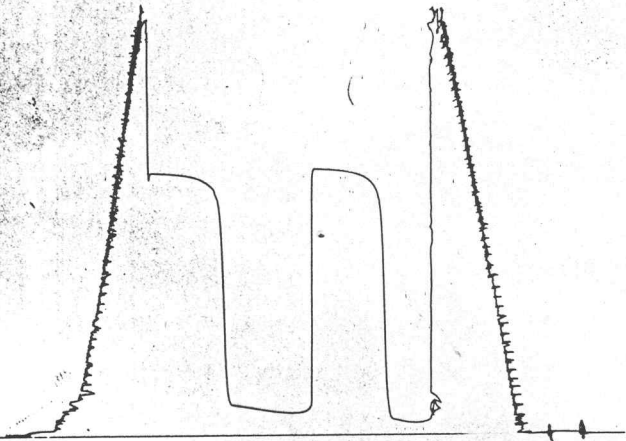
I



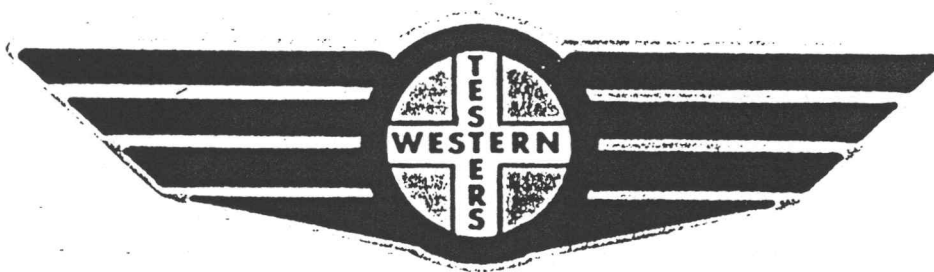
13800

TK 10258

0



# FORMATION TEST REPORT



Home Office:

Wichita, Kansas 67201

P.O. Box 1599

Phone (316) 262-5861

WESTERN TESTING CO. INC.  
SUBSURFACE PRESSURE SURVEY

DATE : 5-18-87 TICKET : 10259  
CUSTOMER : ENERGY EXPLORATION INC. LEASE : STOLL  
WELL : #2 TEST: 6 GEOLOGIST : K. HOWARD  
ELEVATION : 3033 GS FORMATION : PAW-MY.ST-FT.SC

OTT

SECTION : 1 TOWNSHIP : 11S  
RANGE : 32W COUNTY : LOGAN STATE : KANSAS  
GAUGE SN# : 6233 RANGE : 4000 CLOCK : 12

INTERVAL FROM : 4436 TO : 4530 TOTAL DEPTH : 4530

DEPTH OF SELECTIVE ZONE :  
PACKER DEPTH : 4431 SIZE : 6.75  
PACKER DEPTH : 4436 SIZE : 6.75  
PACKER DEPTH : SIZE :  
PACKER DEPTH : SIZE :

DRILLING CON. : ABERCROMBIE RIG #5  
MUD TYPE : CHEMICAL VISCOSITY : 48  
WEIGHT : 9.4 WATER LOSS (CC) : 12.0  
CHLORIDES (PPM) : 2000  
JARS-MAKE : NO SERIAL NUMBER :  
DID WELL FLOW ? : NO REVERSED OUT ? : NO

DRILL COLLAR LENGTH : 0 FT I.D. inch : 0.00  
WEIGHT PIPE LENGTH : 444 FT I.D. inch : 3.20  
DRILL PIPE LENGTH : 3972 FT I.D. inch : 3.80  
TEST TOOL LENGTH : 20 FT TOOL SIZE : 5.50  
ANCHOR LENGTH : 94 FT ANCHOR SIZE : 5.50  
SURFACE CHOKE SIZE : .75 IN BOTTOM CHOKE SIZE : .75  
MAIN HOLE SIZE : 7.875 IN TOOL JOINT SIZE : 4.5 XH

BLOW COMMENT #1 : INITIAL FLOW-WEAK BLOW-INCREASED TO 2" IN WATER  
BLOW COMMENT #2 : FINAL FLOW-WEAK BLOW-1/2" IN WATER  
BLOW COMMENT #3 :  
BLOW COMMENT #4 :

RECOVERED : 30 FT OF: OIL CUT MUD  
5% OIL-95% MUD  
RECOVERED : 30 FT OF: OIL CUT GASSY MUD  
15% OIL-20% GAS-65% MUD  
CHLORIDES: 3000 PPM

Total Barrels Fluid = 0.60  
Total Fluid Prod Rate = 9.55 BFPD  
Indicated Oil Rate = 1.19 BOPD  
Indicated Wtr Rate = 0.95 BWPD

REMARK 1 : FIRST PART OF FINAL  
FLOW PLUGGED OFF.  
REMARK 2 : CLEANED ITSELF UP IN LAST 15 MINUTES.  
REMARK 3 :  
REMARK 4 :

SET PACKER(S) : 5:00 PM TIME STARTED OFF BOTTOM : 8:30 PM  
WELL TEMPERATURE : 128  
INITIAL HYDROSTATIC PRESSURE (A) 2239  
INITIAL FLOW PERIOD MIN: 30 (B) 41 PSI TO (C) : 41  
INITIAL CLOSED IN PERIOD MIN: 63 (D) 220  
FINAL FLOW PERIOD MIN: 60 (E) 56 PSI TO (F) : 56  
FINAL CLOSED IN PERIOD MIN: 60 (G) 131  
FINAL HYDROSTATIC PRESSURE (H) 2232

WESTERN TESTING CO. INC.  
WICHITA - KANSAS

Pressure Transient Report  
-----

COMPANY : ENERGY EXPLORATION INC.  
RIG : LOGAN-KANSAS  
FIELD : STOLL  
WELL : #2  
DATE : 5-18-87  
GAUGE NO : 6233

OPERATIONAL COMMENTS

FIRST PART OF FINAL  
FLOW PLUGGED OFF.  
CLEANED ITSELF UP IN LAST 15 MINUTES.

COMPANY : ENERGY EXPLORATION INC.  
 WELL : #2  
 GAUGE # : 6233  
 DATE : 18/ 5/87

FIELD : STOLL  
 JOB # : 10259  
 DEPTH : 4530  
 TEST : FIRST PART OF FINAL  
 FLOW PLUGGED OFF.

DATA No.	REAL TIME HR:MN:SS	ELAPSE TIME DELTA HOURS	PRESSURE PSIG	TEMP DEG F	DELTA P Pi-P(i-1)
1	5: 0: 0	0.000	41.000	128.00	0.000
2	5: 4: 59	0.083	41.000	128.00	0.000
3	5: 10: 0	0.167	41.000	128.00	0.000
4	5: 15: 0	0.250	41.000	128.00	0.000
5	5: 19: 59	0.333	41.000	128.00	0.000
6	5: 25: 0	0.417	41.000	128.00	0.000
7	5: 30: 0	0.500	41.000	128.00	0.000
8	5: 33: 0	0.550	41.000	128.00	0.000
9	5: 36: 0	0.600	42.000	128.00	1.000
10	5: 39: 0	0.650	44.000	128.00	2.000
11	5: 42: 0	0.700	47.000	128.00	3.000
12	5: 45: 0	0.750	53.000	128.00	6.000
13	5: 48: 0	0.800	59.000	128.00	6.000
14	5: 51: 0	0.850	66.000	128.00	7.000
15	5: 54: 0	0.900	73.000	128.00	7.000
16	5: 57: 0	0.950	79.000	128.00	6.000
17	6: 0: 0	1.000	89.000	128.00	10.000
18	6: 2: 59	1.050	97.000	128.00	8.000
19	6: 6: 0	1.100	104.000	128.00	7.000
20	6: 9: 0	1.150	113.000	128.00	9.000
21	6: 12: 0	1.200	123.000	128.00	10.000
22	6: 15: 0	1.250	134.000	128.00	11.000
23	6: 18: 0	1.300	145.000	128.00	11.000
24	6: 21: 0	1.350	157.000	128.00	12.000
25	6: 24: 0	1.400	170.000	128.00	13.000
26	6: 27: 0	1.450	188.000	128.00	18.000
27	6: 30: 0	1.500	205.000	128.00	17.000
28	6: 33: 0	1.550	220.000	128.00	15.000
29	6: 34: 0	1.567	56.000	128.00	-164.000
30	6: 37: 59	1.633	56.000	128.00	0.000
31	6: 43: 0	1.717	56.000	128.00	0.000
32	6: 48: 0	1.800	56.000	128.00	0.000
33	6: 52: 59	1.883	56.000	128.00	0.000
34	6: 58: 0	1.967	56.000	128.00	0.000
35	7: 3: 0	2.050	56.000	128.00	0.000
36	7: 7: 59	2.133	56.000	128.00	0.000
37	7: 13: 0	2.217	56.000	128.00	0.000
38	7: 18: 0	2.300	56.000	128.00	0.000
39	7: 22: 59	2.383	56.000	128.00	0.000
40	7: 28: 0	2.467	56.000	128.00	0.000
41	7: 33: 0	2.550	56.000	128.00	0.000
42	7: 36: 0	2.600	56.000	128.00	0.000
43	7: 38: 59	2.650	56.000	128.00	0.000
44	7: 42: 0	2.700	56.000	128.00	0.000
45	7: 45: 0	2.750	56.000	128.00	0.000
46	7: 48: 0	2.800	58.000	128.00	2.000
47	7: 51: 0	2.850	63.000	128.00	5.000
48	7: 53: 59	2.900	66.000	128.00	3.000
49	7: 57: 0	2.950	71.000	128.00	5.000
50	8: 0: 0	3.000	76.000	128.00	5.000
51	8: 3: 0	3.050	79.000	128.00	3.000
52	8: 6: 0	3.100	84.000	128.00	5.000

COMPANY : ENERGY EXPLORATION INC.  
WELL : #2  
GAUGE # : 6233  
DATE : 18/ 5/87

FIELD : STOLL  
JOB # : 10259  
DEPTH : 4530  
TEST : FIRST PART OF FINAL  
FLOW PLUGGED OFF.

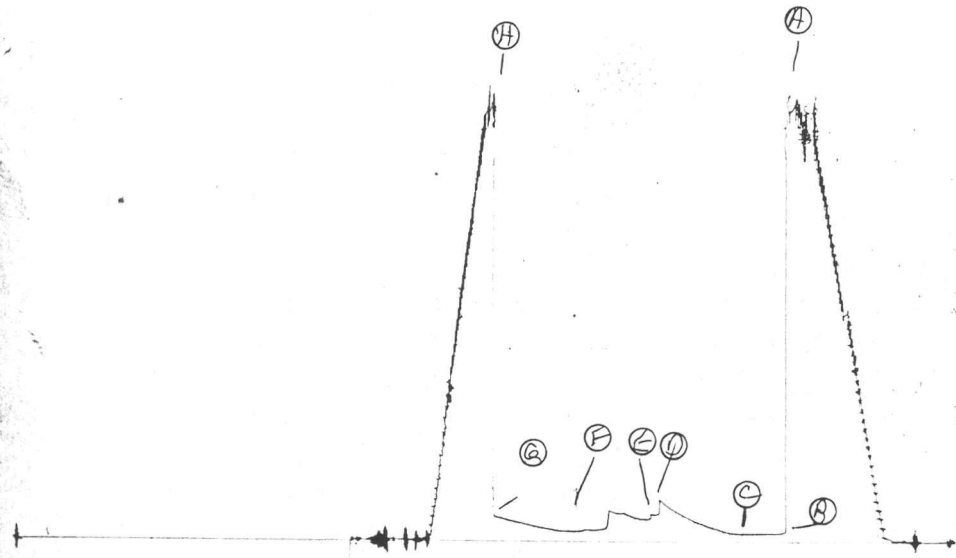
DATA No.	REAL TIME HR:MN:SS	ELAPSE TIME DELTA HOURS	PRESSURE PSIG	TEMP DEG F	DELTA P $P_i - P_{(i-1)}$
53	8: 9: 0	3.150	89.000	128.00	5.000
54	8:11:59	3.200	95.000	128.00	6.000
55	8:15: 0	3.250	101.000	128.00	6.000
56	8:18: 0	3.300	104.000	128.00	3.000
57	8:21: 0	3.350	109.000	128.00	5.000
58	8:24: 0	3.400	115.000	128.00	6.000
59	8:26:59	3.450	120.000	128.00	5.000
60	8:30: 0	3.500	125.000	128.00	5.000
61	8:33: 0	3.550	131.000	128.00	6.000

WESTERN TESTING CO. INC.

6233

TKF 10259

I



0051  
13400

KF 10259  
O

