

15-167-21107

Geological Survey
KANSAS DRILLERS LOG

IMPORTANT
 Kans. Geo. Survey request
 samples on this well.

API No. 15 — 167 — 21,107
 County Number

S. 33 T. 11 R. 13 ⁸/_W
 Loc. NW NW NE
 County Russell

Operator
Jenkins Cil Co., Inc.

Address
Suite 411, 200 East First Wichita, Kansas 67202

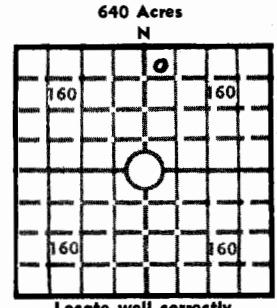
Well No. Lease Name
#1 Gillett

Footage Location
330 feet from (N) line 2310 feet from (E) line

Principal Contractor Geologist
Western Petroleum, Inc. Neil H. Sikes

Spud Date Total Depth P.B.T.D.
12-2-77 3288

Date Completed Oil Purchaser
12-14-77



Elev.: Gr. 1764
 DF 1770 KB 1773

CASING RECORD

Report of all strings set — surface, intermediate, production, etc.

Purpose of string	Size hole drilled	Size casing set (in O.D.)	Weight lbs/ft.	Setting depth	Type cement	Sacks	Type and percent additives
Surface	12"	8-5/8"		256'	Common	200	2% gel 3% cc

LINER RECORD

PERFORATION RECORD

Top, ft.	Bottom, ft.	Sacks cement	Shots per ft.	Size & type	Depth interval

TUBING RECORD

Size	Setting depth	Packer set at

ACID, FRACTURE, SHOT, CEMENT SQUEEZE RECORD

Amount and kind of material used	Depth interval treated

INITIAL PRODUCTION

Date of first production		Producing method (flowing, pumping, gas lift, etc.)			
RATE OF PRODUCTION PER 24 HOURS	Oil	Gas	Water	Gas-oil ratio	
	bbis.	MCF	bbis.	CFPB	
Disposition of gas (vented, used on lease or sold)			Producing interval (s)		

INSTRUCTIONS: As provided in KCC Rule 82-2-125, within 90 days after completion of a well, one completed copy of this Drillers Log shall be transmitted to the State Geological Survey of Kansas, 4150 Monroe Street, Wichita, Kansas 67209. Copies of this form are available from the Conservation Division, State Corporation Commission, 3830 So. Meridian (P.O. Box 17027), Wichita, Kansas 66217. Phone AC 316-522-2206. If confidential custody is desired, please note Rule 82-2-125. Drillers Logs will be on open file in the Oil and Gas Division, State Geological Survey of Kansas, Lawrence, Kansas 66044.

Operator

JINKINS OIL COMPANY, INC.

DESIGNATE TYPE OF COMP.: OIL, GAS,
DRY HOLE, SWDW, ETC.:
Dry Hole

Well No.

1

Lease Name

Gillett

S. 33 T. 11 R. 13^W

WELL LOG

Show all important zones of porosity and contents thereof; cored intervals, and all drill-stem tests, including depth interval tested, cushion used, time tool open, flowing and shut-in pressures, and recoveries.

SHOW GEOLOGICAL MARKERS, LOGS RUN,
OR OTHER DESCRIPTIVE INFORMATION.

FORMATION DESCRIPTION, CONTENTS, ETC.	TOP	BOTTOM	NAME	DEPTH
Surface soil and shale	0	270	PetroLog GR-N-G-C	
Shale		430		
Sand and shale		762	Anhydrite	826
shale		826	Howard	2672
Anhydrite	826	860	Topeka	2696
Shale		1345	Huebner	2967
Shale and lime		1756	Toronto	2988
Lime and shale		2696	Lansing	3024
Lime	2696	2967	BKC	3273
Shale	2967	2988	TD	3288
Lime and shale	2988	3288		

USE ADDITIONAL SHEETS, IF NECESSARY, TO COMPLETE WELL RECORD.

Date Received

Robert B. Jenkins

Signature

President

Title

12-20-77

Date