

**JOHN O. FARMER, INC.**

P.O. Box 352

Russell, KS 67665

(785) 483-3144

**Distribution:**

Presley Petroleum  
 Terry Marple  
 Gerald Furseth Revocable Trust  
 Andrea Krauss  
 Robert Schmidt  
 Pinnacle Resources  
 Grand Prairie  
 Aven Weaverling

**Bowlby-Maupin #1**  
 2,500' FNL & 2,410' FWL  
 Sec. 10 T11S R15  
 Russell County, Kansas  
 1,934 'G.L.  
 1,942 'K.B.

**(Paradise Creek 3D)**

**Drilling Contractor:**

**Discovery Drilling - Rig #2**

Rig Cell. 785-635-1412  
 Bag phone 785-639-1658  
Toolpusher - Dave Dreiling  
Geologist - Brad Hutchison  
 Cell 785-483-0492  
 Office 785-483-5783

API #15-167-23,488-0000

**TIGHT HOLE - DO NOT RELEASE INFORMATION**

**3/3/2008**

MIRU, Spud 12 1/4" @ 1:45 PM. Drilled 649', ran 15 Joints New 23#- 8 5/8" (640') set @ 649', cemented by Quality w/ 275 sx. Common, 2% gel 3% CC; cement did circulate. Completed @ 4:30 am, SHS 1° @ 649.

**3/4/2008**

649', Wait on cement

**3/5/2008**

1,717', drilling

**3/6/2008**

2,474', drilling

**3/7/2008**

3,140', circulating for samples

**DST #1- 3,085'-3,140' (Lansing B & C zones)**

30" - 30" - 60" - 60"

IF: Weak building blow to 4", surface blowback on shut in

FF: Weak building blow to 4", surface blowback on shut in

**Rec: Trace of Gas in Pipe**

**70' Oil Cut Mud (5% Oil, 95% Mud)**

FP: 16-36#, 36-46#

SIP: 265-271#

HP: 1,508-1,489#

BHT: 93° F

**3/8/2008**

3,375', drilling

**3/9/2008**

3,500', running DST #2

**DST #2- 3,395'-3,438' (Simpson Sand & Arbuckle)**

30" - 30" - 30" - 60"

IF: Strong, BOB in 2", surface blowback on shut in

FF: Strong, BOB in 2", surface blowback on shut in

**Rec: 370' Mud Cut Oil (30% Mud, 70% Oil)**

**1,020' Clean Oil (28° API Gravity)**

**1,390' Total Fluid**

FP: 58-334#, 352-572#

SIP: 1,059-1,065#

HP: 1,716-1,606#

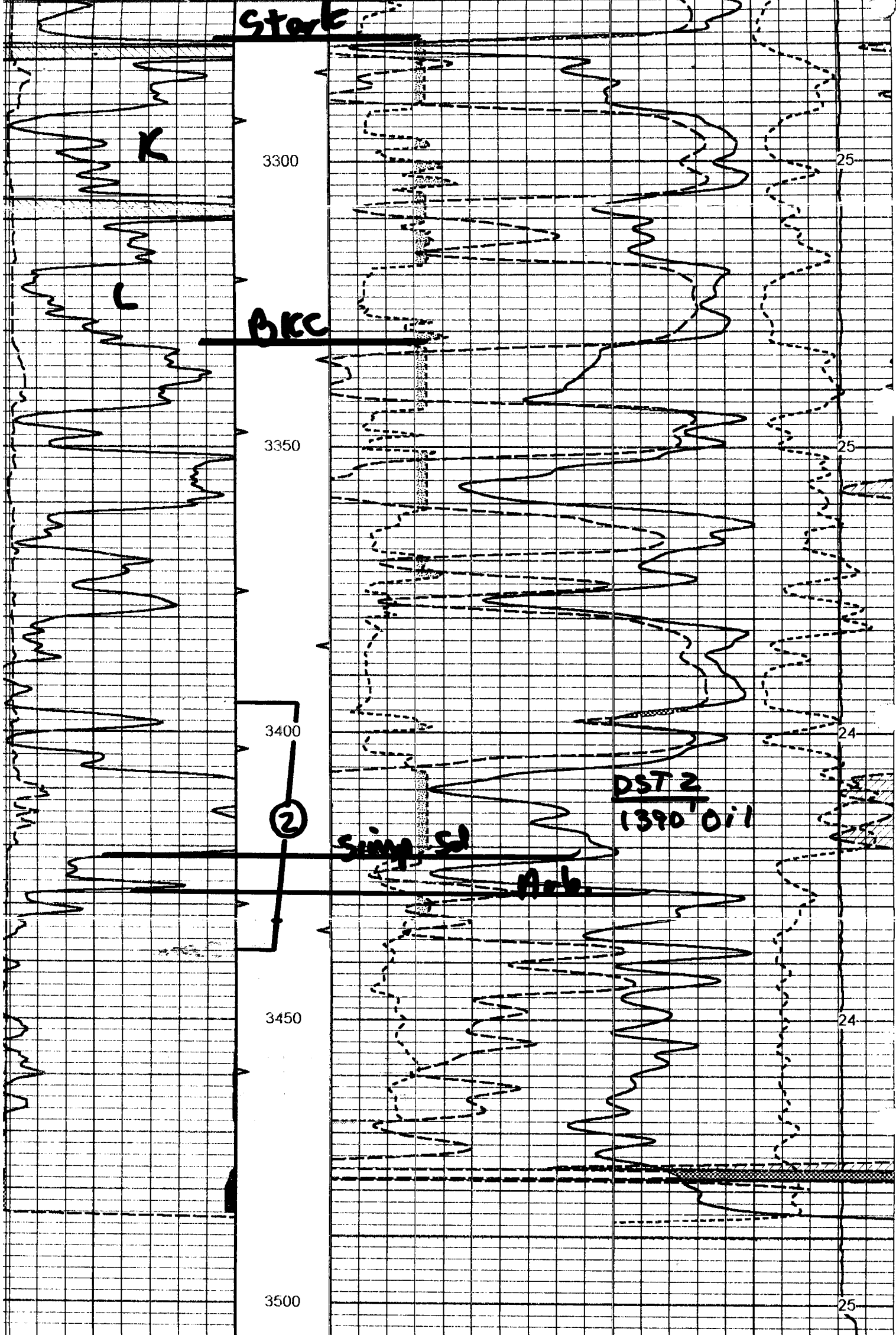
BHT: 107° F

Ran 83 Joints new 14#, 5 1/2" ST & C casing. Set pipe 1' off bottom at 3,499'. Rigged up Swift Services and cemented rathole w/15 sx and mouse hole with 10 sx cement. Pumped 500 gal mud flush followed by 20 bbls KCL water. Cemented longstring with 150 sx EA-2 and flushed with 84 barrels water. Good circulation throughout, plug down at 8:15 pm. Pump pressure at 700# and landed plug with 1,400#. Set slips and released rig at 8:45 pm. (Note- Set long string of surface, no port collar)

John O. Farmer, Inc. Maupin #1 930' FNL & 570' FWL 1903 KB		Estim. from 3D Seismic	JOHN O. FARMER, INC. Bowlby-Maupin #1 1942			
			Sample		E-Log	
Anhydrite	987 916		1025	917	1032	910
Topeka	2728 -825		2774	-832	2773	-831
Heebner	2979 -1076	-1082	3024	-1082	3024	-1082
Toronto	2999 -1096		3044	-1102	3043	-1101
Lansing	3028 -1125		3076	-1134	3073	-1131
Stark Sh	3230 -1327		3279	-1337	3279	-1337
B/KC	3284 -1381		3332	-1390	3333	-1391
Arbuckle	3361 -1458	-1475	3428	-1486	3428	-1486
RTD			3500	-1558		
LTD	3449 -1546				3501	-1559

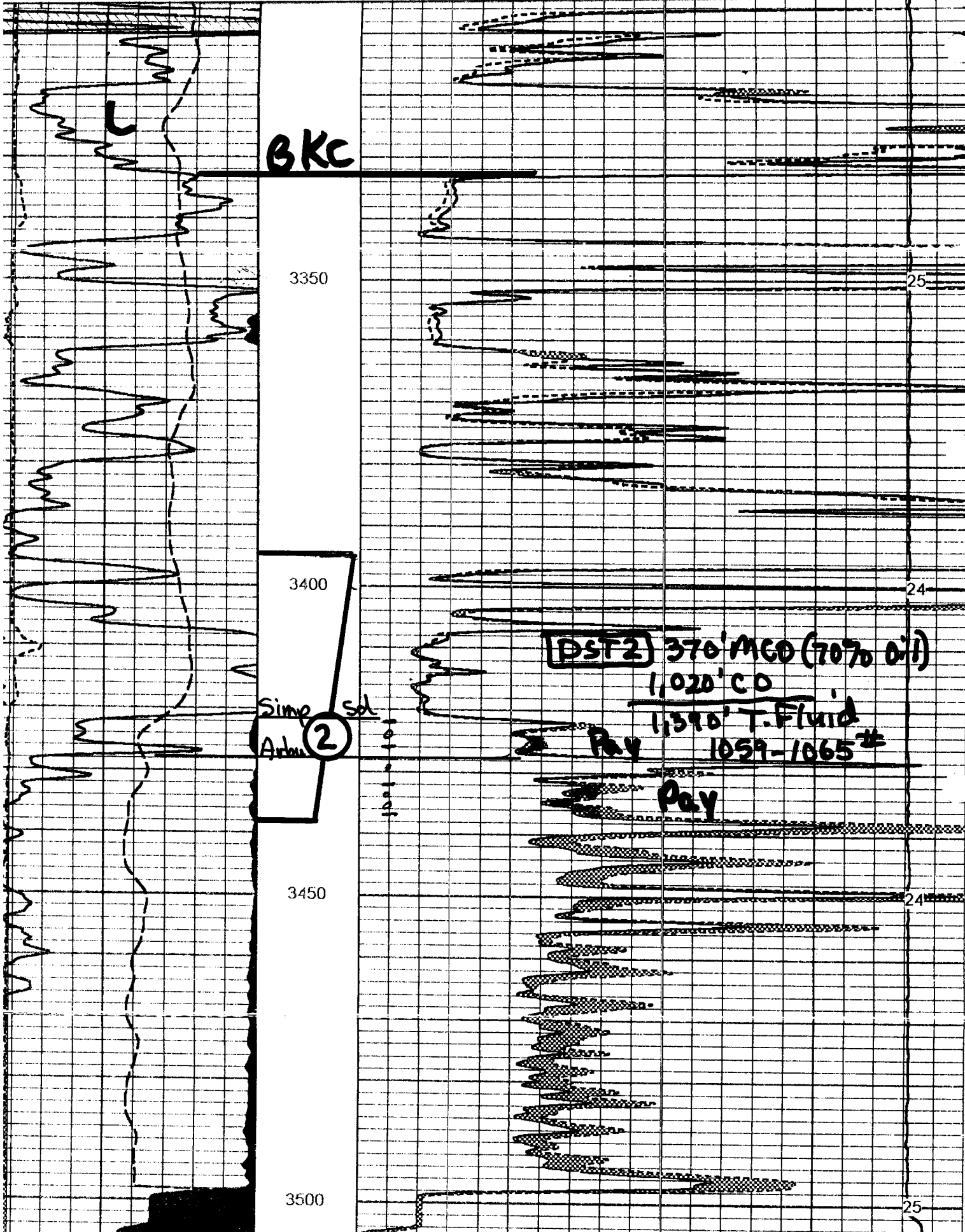


**Stark**



Gamma Ray (GAPI) 150  
Caliper (in) 16

30 Compensated Neutron (pu) -10  
30 Compensated Density (2.71ma) (pu) -10  
2.625 dga 3.425 -0.25 Correction (g/cc) 0.25  
15000 Line Tension (lb)



**BKC**

3350

3400

Simp  
Arbu **2** sol

3450

3500

**[DST2] 370' MGD (70% oil)**

1,020' CO

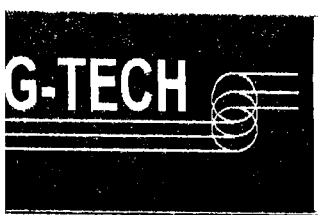
1,1390' T. Fluid

Pay 1059-1065'

Pay

Gamma Ray (GAPI)	150
Caliper (in)	16
SP (MV)	0

0	Micro Inverse 1 X 1 (Ohm-m)	
0	Micro Normal 2" (Ohm-m)	40
15000	Line Weight (lb)	0

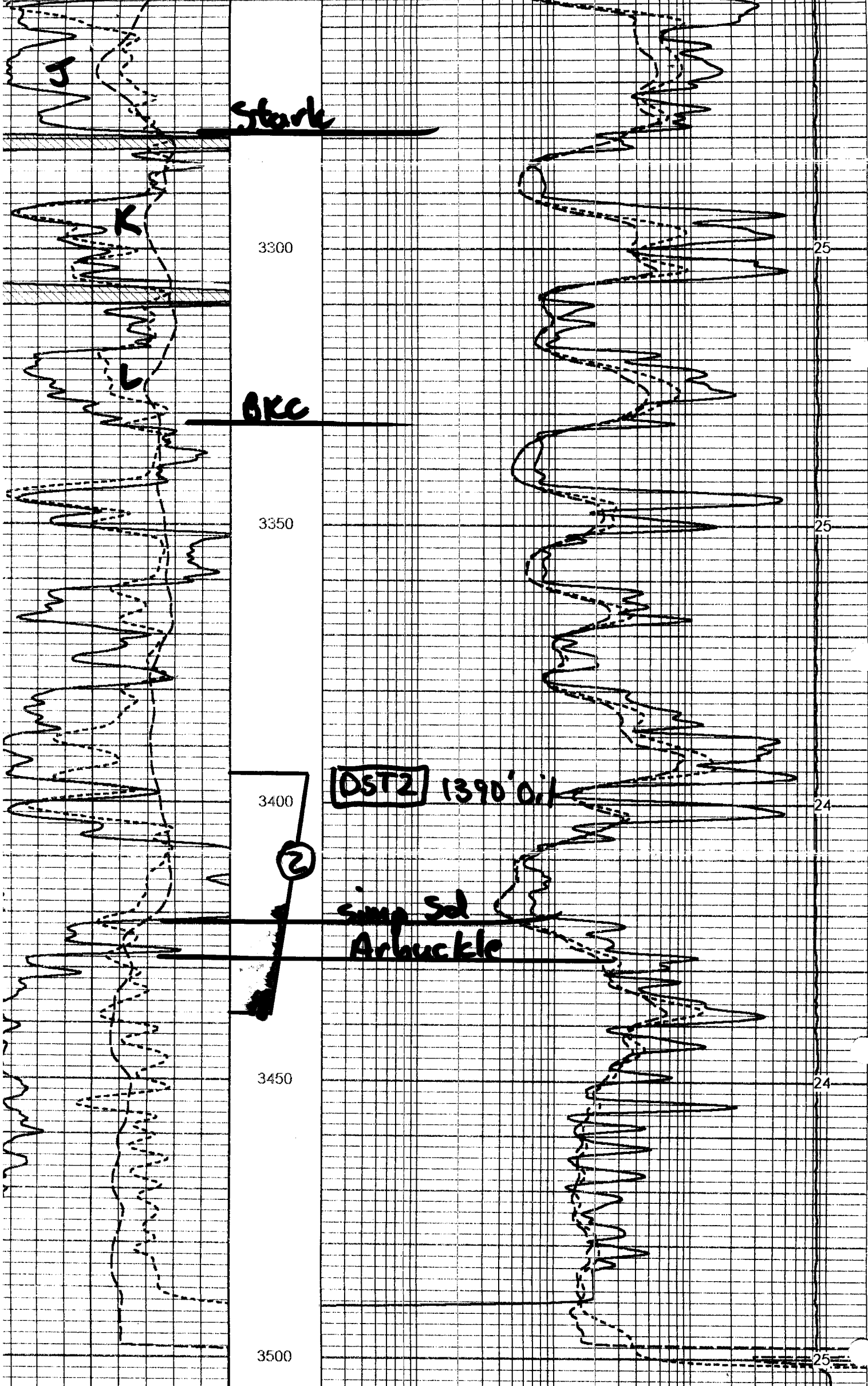


# Repeat Section

base File: johno.db  
 set Pathname: stack/pass1.1  
 entation Format: micro.prs  
 set Creation: Sat Mar 08 22:30:54 2008 by Calc VER\_5.3  
 red by: Depth in Feet scaled 1:240

Gamma Ray (GAPI)	150
Caliper (in)	16

0	Micro Inverse 1 X 1 (Ohm-m)	40
0	Micro Normal 2" (Ohm-m)	40



Gamma Ray (GAPI)	150
SP	0
RXO/RT	40

0.2	Deep Resistivity (Ohm-m)	2000
0.2	Medium Resistivity (Ohm-m)	2000
0.2	Shallow Resistivity (Ohm-m)	2000
15000	Line Tension (lb)	0