

STATE CORPORATION COMMISSION OF KANSAS
OIL & GAS CONSERVATION DIVISIONWELL COMPLETION OR RECOMPLETION FORM
ACO-1 WELL HISTORY

DESCRIPTION OF WELL AND LEASE

Operator: license # 6772
 name V. Francis Weigel
 address Box 244
 City State Zip Gorham, KS 67640

Operator Contact Person V. Francis Weigel
 Phone (913) 637-5383

Contractor: license # 5655
 name Shields Drilling Co., Inc.

Site Geologist Francis Whisler
 Phone (913) 483-3020

Designate Type of Completion

☒ New Well ☐ Re-Entry ☐ Workover

☒ Oil ☐ SWD ☐ Temp Abd
☐ Gas ☐ Inj ☐ Delayed Comp.
☐ Dry ☐ Other (Core, Water Supply etc.)

If OWWO: old well info as follows:

Operator
 Well Name
 Comp. Date Old Total Depth

WELL HISTORY

Drilling Method: ☒ Mud Rotary ☐ Air Rotary ☐ Cable

11/21/85 11/28/85 1/21/86
 Spud Date Date Reached TD Completion Date

3533' 3489'
 Total Depth PBTD

Amount of Surface Pipe Set and Cemented at 1184' feet

Multiple Stage Cementing Collar Used? ☐ Yes ☒ No

If Yes, Show Depth Set feet

If alternate 2 completion, cement circulated
 from feet depth to w/ SX cmt

API NO. 15- 051-24,354

County Ellis

SE-NE-SW (location) Sec 1 Twp 11s Rge 16 XX West

1705

Ft North from Southeast Corner of Section

2970 Ft West from Southeast Corner of Section

(Note: locate well in section plat below)

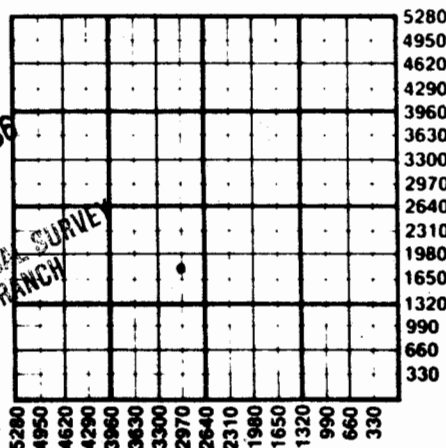
Lease Name Bowlby Well# 6

Field Name Bowlby Ext (1/8w)

Producing Formation Topeka, Toronto, Kansas City

Elevation: Ground 1978 KB 1983

Section Plat



WATER SUPPLY INFORMATION

Source of Water:

Division of Water Resources Permit #

☐ Groundwater Ft North From Southeast Corner and
 (Well) Ft. West From Southeast Corner of

Sec Twp Rge East West

☐ Surface Water Ft North From Southeast Corner and
 (Stream, Pond etc.) Ft West From Southeast Corner

Sec Twp Rge East West

☐ Other (explain)

(purchased from city, R.W.D.#)

Disposition of Produced Water:

☒ Disposal
☐ Repressuring

Docket # D-24,067

INSTRUCTIONS: This form shall be completed in duplicate and filed with the Kansas Corporation Commission, 200 Colorado Derby Building, Wichita, Kansas 67202, within 90 days after completion or recompletion of any well. Rules 82-3-130 and 82-3-107 apply.

Information on side two of this form will be held confidential for a period of 12 months if requested in writing and submitted with the form. See rule 82-3-107 for confidentiality in excess of 12 months.

One copy of all wireline logs and drillers time log shall be attached with this form. Submit CP-4 form with all plugged wells. Submit CP-111 form with all temporarily abandoned wells.

81936
SIDE TWO

W 31-11 Francis Weigel

Lease Name Bowlby

Well# 6

SEC 1

11s 16

☐ East

☒ West

WELL LOG

INSTRUCTIONS: Show important tops and base of formations penetrated. Detail all cores. Report all drill stem tests giving interval tested, time tool open and closed, flowing and shut-in pressures, whether shut-in pressure reached static level, hydrostatic pressures, bottom hole temperature, fluid recovery, and flow rates if gas to surface during test. Attach extra sheet if more space is needed. Attach copy of log.

Drill Stem Tests Taken
Samples Sent to Geological Survey
Cores Taken

☐ Yes ☒ No
☐ Yes ☒ No
☐ Yes ☒ No

Formation Description
☒ Log ☐ Sample

Name	Top	Bottom
Anhydrite	1172'	
Topeka Lime	2886'	
Heebner Shale	3126'	
Toronto Lime	3150'	
Lansing-Kansas City	3177'	
Base of K.C.		3427'
T.D.	3533'	

2 3151-54
2 2916-22

Acid 3500 gal. 15%
Acid 5000 gal. 15%

TUBING RECORD size 2 7/8 set at 3483 packer at none

Liner Run ☐ Yes ☒ No

Date of First Production 2-2-86
Producing method ☐ flowing ☒ pumping ☐ gas lift ☐ Other (explain)

Estimated Production Per 24 Hours	Oil	Gas	Water	Gas-Oil Ratio	Gravity
8 Bbls		MCF	150 Bbls	CFPB	35

METHOD OF COMPLETION

PRODUCTION INTERVAL

Disposition of gas: ☐ vented
☐ sold
☐ used on lease

☐ open hole ☒ perforation
☐ other (specify)
☐ Dually Completed.
☒ Commingled

2916
3419

CASING RECORD ☒ new ☐ used

Report all strings set - conductor, surface, intermediate, production, etc.

Purpose of string	size hole drilled	size casing set (in O.D.)	weight lbs/ft.	setting depth	type of cement	# sacks used	type and percent additives
surface	12 1/4	8 5/8	24#	1184'	common	425	----
production	7 7/8	5 1/2	14#	3531'	"	190	----

PERFORATION RECORD

Acid, Fracture, Shot, Cement Squeeze Record

shots per foot	specify footage of each interval perforated	(amount and kind of material used)	Depth
1	3419, 3400, 3392, 3360 1/2, 3342, 3317 1/2	Acid 3000 gal. 15%	
1	3277, 3265 1/2, 3254	Acid 2000 gal. 15%	
1	3229 & 3207	None	
2	3205-08	Acid 2500 gal. 15%	