

WELL LOG BUREAU - KANSAS GEOLOGICAL SOCIETY.  
412 Union National Bank Bldg, Wichita, Kansas.

*Plotted*  
*Deep. Rec.*  
*L.M.*

CITIES SERVICE OIL CO.  
McCord No. 2

SEC. 26 T. 11 R. 17 W.  
SE - NW - NE  
1040' E 1090'S N1/4 cor

DEEPENING RECORD.

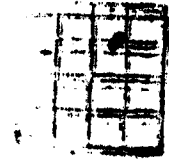
Total Depth 3591  
Comm. 4-15-39 Comp. 5-7-39  
Shot or Treated: Acidized 2000 gal.  
Contractor: J. E. Mabee Co.

County Ellis.

Issued: 12-28-40 Rotary 3535  
C A S I N G. Cable Tools 3563

8-5/8" 1111'  
5-1/2" 3535'

Elevation.



Production. Pot. 710 B.

4% wtr  
Figures Indicate Bottom of Formation.

Surface	30	Lime	3510
Surface Rock	45	Lime Broken	3520
		Lime	3540
Shale & Shells	463	Top Arbuckle	3538
Sand	540	T. D. Rotary	3540
Shale	625	5-1/2" O.D.	3539
Sand Iron & Shells	745		
Shale & Shells	780	T.D. Rotary 3540 =	3535 SIM
Sand	897	Top Arbuckle corr.	3533
Shale & Shells	1070	Dolomite	3563 T.D.
Red Bed Shale	1086		
Shale & Shells	1111	TOTAL DEPTH	3563
Red Bed	1190		
Shale & Shells	1255		
Anhydrite	1285	Top Arbuckle	3533
Shale & Shells	1580	Penetration	30
Salt & Shale	1896	Total Depth	3563
Line Broken	1904		
lime and Shale	2046	Pay 3555-62	
Broken Line	2090		
Line	2116	Fillup:	
Line Broken	2185	250' 8-3/4 hrs.	
Line	2308	1300' 13-1/2 hrs.	
Line Broken	2320		
Line & Shale	2421	<u>DEEPENING RECORD.</u>	
Shale	2451	Comm. 7-10-40	
Shale & Lime	2513	Comp. 9-10-40	
Shale & Shells	2570	Prod. Pot. 710 B.O. 4% wtr.	
Line & Shale	2713	Dolomite 3563-3591	
Shale & Shells	2817	Total Depth.	
Shale	2852		
Shale & Lime	3000		
Line	3244		
Line & Shale	3257		
Line Broken	3270		
Line	3286		
Broken Line	3385		