



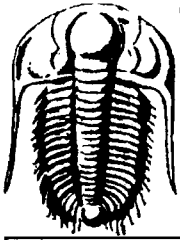
DRILL STEM TEST REPORT

Prepared for

Blue Grass Energy
5727 S. Lewis St. STE 700
Tulsa, OK 74105

Diane #21-2
21 11s 20w
Ellis co KS

Trilobite Testing, Inc
PO Box 362 - Hays, Kansas - 67601
ph: 785-625-4778 fax: 785-625-5620
e-mail: trilobite@eaglecom.net



TRILOBITE TESTING, INC.

DRILL STEM TEST REPORT

Well name#:	Diane #21-2	Date:	11/21/2001
Location#:	21 11s 20w	Ticket #:	15646
		DST#	1

General Informaion:

Formation:		Test Type:	Conventional	BHT:	72
Interval:	750-770	Tester:	John Schmidt	OIL API:	
Total Depth:	770	Elevation:	2145 ft(KB)	H2O Salinity:	8000
Hole Diameter:	7 7/8"		2140 ft(CF)		
Start Date:	11/21/2001	Tool Weight:	3000	Mud Type:	Chemical
Start Time:	11:30:00	Weight Set on Packers:	19000	Mud Weight:	8.7
Time tool opened:	12:07:00	Weight to Pull Loose:	20000	Viscosity:	34
Time Off Btm:	12:25:00	Initial String Weight:	19000	Water Loss:	
End Date:	11/21/01	Final String Weight:	20000	Resistivity:	
End Time:	13:45:00	Drill Pipe Length:	627	Salinity:	
		Drill Collar Length:	125		

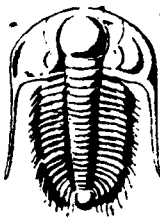
Test Comment:

IF - Strong b.o.b. in 5 sec.
FF - Strong b.o.b. in 5 sec.

Recovery Length(ft):	450ft	125ft DC	325ft DP
	Description:		
450	SMC water 95%w 5%m		

Gas Volume Report

Recorder #:	11084	Open	Min:	Ins. Of water	Orifice	CF/D
Pressure Summary:	Time:(min)			PSIG	size	
Initial Hydro-static:	365					
Open to Flow (1):	222	3				
Shut-in (1):	229					
End Shut-in (1):	235	10				
Open to Flow (2):	243	5				
Shut-in (2):	243					
End Shut-in (2):						
Final Hydro-static:	358					



TRILOBITE TESTING INC.

P.O. Box 362 • Hays, Kansas 67601

No 15646

Test Ticket

Well Name & No. DIANE # 21-2 Test No. #1 Date 11-21-01
 Company ~~IMPERIAL AMERICAN OIL CORP.~~ Zone Tested _____
BLUE GRASS ENERGY
 Address 5727 S. LEWIS ST, STE 700 TULSA, OK 74105 Elevation 2145 KB 2140 GL
 Co. Rep / Geo. WAYNE KIRKMAN Cont. MURFIN #8 Est. Ft. of Pay _____ Por. _____ %
 Location: Sec. 21 Twp. 11 S Rge. 20 W Co. ELLIS State KS
 No. of Copies _____ Distribution Sheet (Y, N) _____ Turnkey (Y, N) _____ Evaluation (Y, N) _____

Interval Tested 750 TO 770 Initial Str Wt./Lbs. 19,000 Unseated Str Wt./Lbs. 20,000
 Anchor Length 20' Wt. Set Lbs. ALL-19,000 Wt. Pulled Loose/Lbs. 20,000
 Top Packer Depth 745 Tool Weight 3,000
 Bottom Packer Depth 750 Hole Size — 7 7/8" Rubber Size — 6 3/4"
 Total Depth 770 Wt. Pipe Run 0 Drill Collar Run 125
 Mud Wt. 8.7 LCM — Vis. 34 WL — Drill Pipe Size 4 1/2 XH Ft. Run 627
 Blow Description I.F. - STRONG B.O.B. IN 5 SEC.
F.F. STRONG B.O.B. IN 5 SEC.

Recovery — Total Feet 450 GIP — Ft. in DC 125' Ft. in DP 325
 Rec. 450 Feet Of SMC - WATER %gas %oil 95 %water 5 %mud
 Rec. _____ Feet Of _____ %gas %oil _____ %water _____ %mud
 Rec. _____ Feet Of _____ %gas %oil _____ %water _____ %mud
 Rec. _____ Feet Of _____ %gas %oil _____ %water _____ %mud
 Rec. _____ Feet Of _____ %gas %oil _____ %water _____ %mud
 BHT 72' °F Gravity _____ °API D@ _____ °F Corrected Gravity _____ °API
 RW .74 @ 67 °F Chlorides 8,000 ppm Recovery Chlorides _____ ppm System

	AK-1	Alpine	PSI Recorder No.	T-On Location
(A) Initial Hydrostatic Mud	<u>362</u>	/	<u>11084</u>	<u>09:00</u>
(B) First Initial Flow Pressure	<u>219</u>		PSI (depth) <u>752</u>	T-Started <u>11:30</u>
(C) First Final Flow Pressure	<u>241</u>		PSI Recorder No. <u>13308</u>	T-Open <u>12:07</u>
(D) Initial Shut-In Pressure	<u>241</u>		PSI (depth) <u>767</u>	T-Pulled <u>12:25</u>
(E) Second Initial Flow Pressure	<u>241</u>		PSI Recorder No. _____	T-Out <u>13:10</u>
(F) Second Final Flow Pressure	<u>241</u>		PSI (depth) _____	T-Off Location <u>13:45</u>
(G) Final Shut-in Pressure	_____		PSI Initial Opening <u>3</u>	Test <u>BOTTOM HOLE 700</u>
(Q) Final Hydrostatic Mud	<u>351</u>		PSI Initial Shut-in <u>10</u>	Jars <input checked="" type="checkbox"/> <u>200</u>
		Final Flow <u>5</u>	Safety Joint <input checked="" type="checkbox"/> <u>50</u>	
		Final Shut-in _____	Straddle _____	
			Circ. Sub _____	
			Sampler _____	
			Extra Packer _____	
			Elec. Rec. _____	
			Mileage <u>25</u>	
			Other _____	
			TOTAL PRICE \$ <u>975</u>	

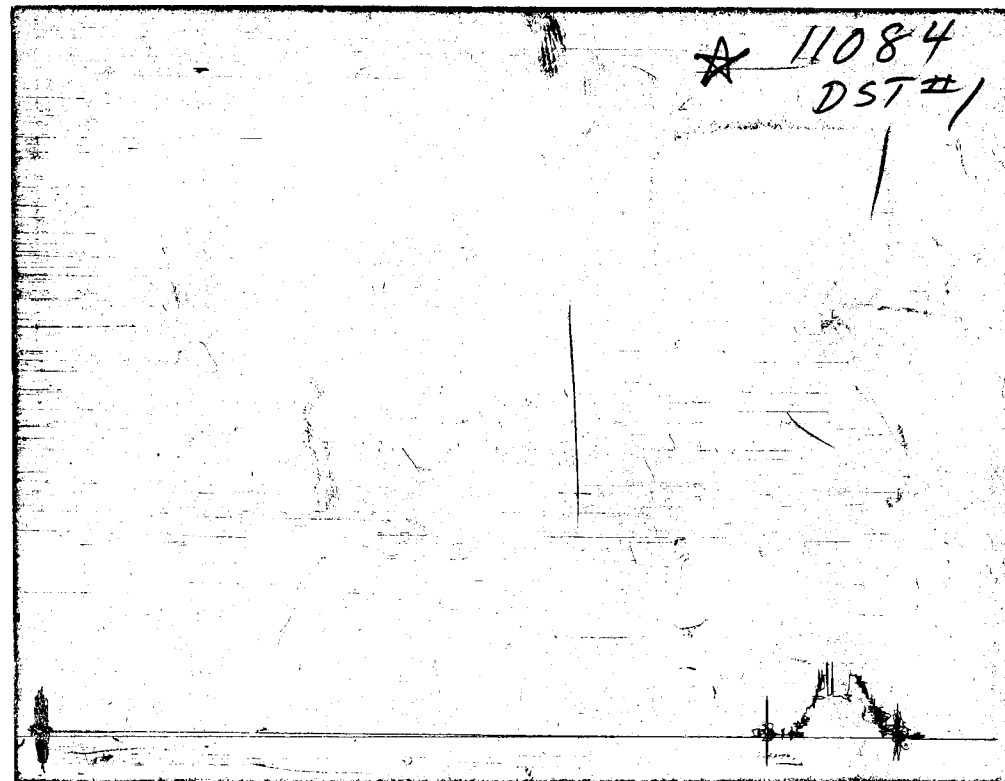
TRILOBITE TESTING INC. SHALL NOT BE LIABLE FOR DAMAGE OF ANY KIND OF THE PROPERTY OR PERSONNEL OF THE ONE FOR WHOM A TEST IS MADE, OR FOR ANY LOSS SUFFERED OR SUSTAINED, DIRECTLY OR INDIRECTLY, THROUGH THE USE OF ITS EQUIPMENT, OR ITS STATEMENTS OR OPINION CONCERNING THE RESULTS OF ANY TEST. TOOLS LOST OR DAMAGED IN THE HOLE SHALL BE PAID FOR AT COST BY THE PARTY FOR WHOM THE TEST IS MADE.

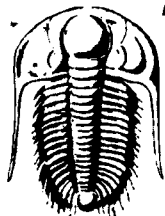
Approved By [Signature]

Our Representative John A. Schmidt

CHART PAGE

This is a photocopy of the actual AK-1 recorder chart





TRILOBITE TESTING INC.

P.O. Box 362 • Hays, Kansas 67601

CONFIDENTIAL

ORIGINAL

No 15647

Test Ticket

Well Name & No. DIANE # 21-2 Test No. #1 Date 11-24-01
 Company IMPERIAL AMERICAN OIL CORP. Zone Tested L-KC, C+D
 Address 303 N. CARROLL BLVD, #214 DENTON, TX 76201 Elevation 2148 KB 2148 GL
 Co. Rep / Geo. RANDALL KILIAN Cont. MURFIN #8 Est. Ft. of Pay 9 Por. 4 %
 Location: Sec. 21 Twp. 11S Rge. 20W Co. ELLIS State KS
 No. of Copies _____ Distribution Sheet (Y, N) _____ Turnkey (Y, N) _____ Evaluation (Y, N) _____

Interval Tested 3467 TO 3518 Initial Str Wt./Lbs. 38,000 Unseated Str Wt./Lbs. 38,000
 Anchor Length 51' Wt. Set Lbs. 20,000 Wt. Pulled Loose/Lbs. 40,000
 Top Packer Depth 3462 Tool Weight 3,000
 Bottom Packer Depth 3467 Hole Size — 7 7/8" Rubber Size — 6 3/4"
 Total Depth 3518 Wt. Pipe Run 0 Drill Collar Run 125'
 Mud Wt. 9.3 LCM #1 Vis. 45 WL 8.2 Drill Pipe Size 4 1/2 XH Ft. Run 3332
 Blow Description IF.-WEAK BLOW DEAD IN 25-MIN. IST. NO BLOW
F.F. DEAD F.S.F. - NO BLOW **KCC**

JAN 03 2002

Recovery — Total Feet 10' GIP _____ Ft. in DC **CONFIDENTIAL** Ft. in DP _____
 Rec. 10 Feet Of MUD @ FEW OIL SPECKS %gas _____ %oil _____ %water _____ %mud _____
 Rec. _____ Feet Of _____ %gas _____ %oil _____ %water _____ %mud _____
 Rec. _____ Feet Of _____ %gas _____ %oil _____ %water _____ %mud _____
 Rec. _____ Feet Of _____ %gas _____ %oil _____ %water _____ %mud _____
 Rec. _____ Feet Of _____ %gas _____ %oil _____ %water _____ %mud _____
 BHT 101 °F Gravity _____ °API D@ _____ °F Corrected Gravity _____ °API
 RW _____ @ _____ °F Chlorides _____ ppm Recovery Chlorides _____ ppm System

	AK-1	Alpine	PSI Recorder No.	T-On Location
(A) Initial Hydrostatic Mud		<u>1730</u>	<u>3017</u>	<u>06:15</u>
(B) First Initial Flow Pressure		<u>15</u>	(depth) <u>3470</u>	T-Started <u>7:58</u>
(C) First Final Flow Pressure		<u>24</u>	PSI Recorder No. <u>13308</u>	T-Open <u>09:50</u>
(D) Initial Shut-In Pressure		<u>667</u>	(depth) <u>3515</u>	T-Pulled <u>12:05</u>
(E) Second Initial Flow Pressure		<u>25</u>	PSI Recorder No. _____	T-Out <u>13:53</u>
(F) Second Final Flow Pressure		<u>30</u>	(depth) _____	T-Off Location <u>14:15</u>
(G) Final Shut-in Pressure		<u>662</u>	PSI Initial Opening <u>30</u>	Test <u>BOTTOM HOLE</u>
(Q) Final Hydrostatic Mud		<u>1697</u>	PSI Initial Shut-in <u>30</u>	Jars _____
			Final Flow <u>30</u>	Safety Joint _____
			Final Shut-in <u>45</u>	Straddle _____

TRILOBITE TESTING INC. SHALL NOT BE LIABLE FOR DAMAGE OF ANY KIND OF THE PROPERTY OR PERSONNEL OF THE ONE FOR WHOM A TEST IS MADE, OR FOR ANY LOSS SUFFERED OR SUSTAINED, DIRECTLY OR INDIRECTLY, THROUGH THE USE OF ITS EQUIPMENT, OR ITS STATEMENTS OR OPINION CONCERNING THE RESULTS OF ANY TEST. TOOLS LOST OR DAMAGED IN THE HOLE SHALL BE PAID FOR AT COST BY THE PARTY FOR WHOM THE TEST IS MADE.

Approved By _____

Our Representative John J. Schmidt

Elec. Rec.
 Mileage 25
 Other _____
 TOTAL PRICE \$ _____

CONFIDENTIAL

KCC

JAN 05 2002

CONFIDENTIAL

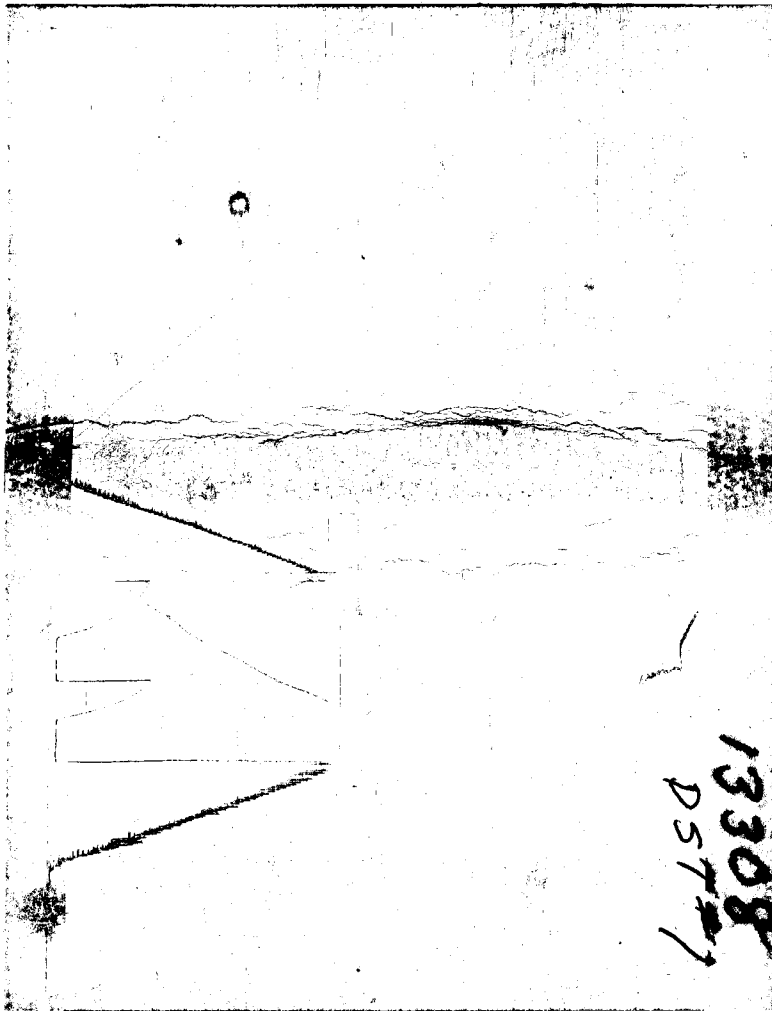
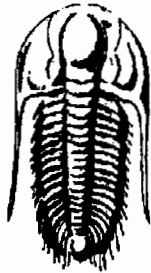


CHART PAGE

This is a photocopy of the actual AK-1 recorder chart

CONFIDENTIAL

ORIGINAL



**TRILOBITE
TESTING, INC.**

KCC

JAN 03 2002

CONFIDENTIAL

DRILL STEM TEST REPORT

Prepared For: **Imperial American Oil Corp.**

303 N. Carroll Blvd. #214
Denton, TX 76201

ATTN: Hal Porter

21--11s--20w

Diane #21-2

Start Date: 2001.11.24 @ 20:32:11

End Date: 2001.11.25 @ 03:57:41

Job Ticket #: 15648 DST #: 2

Trilobite Testing, Inc

PO Box 362 Hays, KS 67601

ph: 785-625-4778 fax: 785-625-5620

99903



TRILOBITE TESTING, INC.

DRILL STEM TEST REPORT

Imperial American Oil Corp.
 303 N.Carroll Blvd.#214
 Denton, TX 76201
 ATTN: Hal Porter

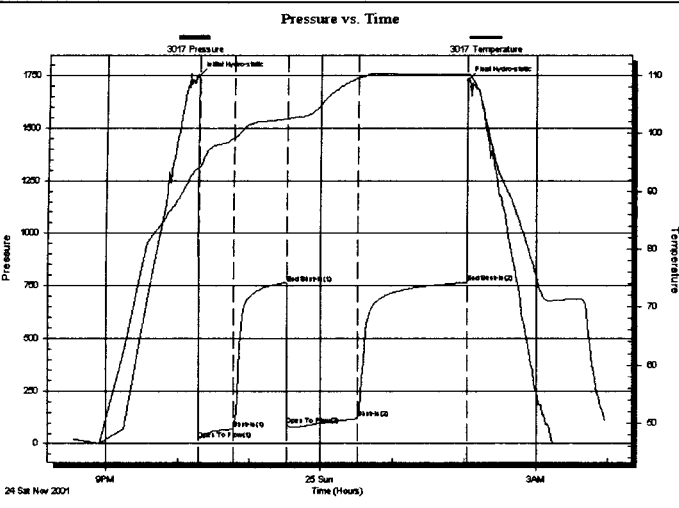
Diane #21-2
21-11s-20w
 Job Ticket: 15648 **DST#: 2**
 Test Start: 2001.11.24 @ 20:32:11

GENERAL INFORMATION:

Formation: **L-Kc-F**
 Deviated: **No Whipstock: ft (KB)**
 Time Tool Opened: **22:17:11**
 Time Test Ended: **03:57:41**
 Test Type: **Conventional Bottom Hole**
 Tester: **John Schmidt**
 Unit No: **18**
 Interval: **3516.00 ft (KB) To 3540.00 ft (KB) (TVD)**
 Total Depth: **3540.00 ft (KB) (TVD)**
 Hole Diameter: **7.88 inches** Hole Condition: **Fair**
 Reference Elevations: **2149.00 ft (KB)**
2144.00 ft (CF)
 KB to GR/CF: **5.00 ft**

Serial #: 3017 Inside
 Press@RunDepth: **119.62 psig @ 3518.01 ft (KB)** Capacity: **7000.00 psig**
 Start Date: **2001.11.24** End Date: **2001.11.25** Last Calib.: **2001.11.25**
 Start Time: **20:32:12** End Time: **03:57:41** Time On Btm: **2001.11.24 @ 22:16:41**
 Time Off Btm: **2001.11.25 @ 02:02:41**

TEST COMMENT: IF-Fair B.O.B.in 27min. IS-Weak blow back
 FF-Fair B.O.B.in 22min. FSI-Weak blow back



PRESSURE SUMMARY			
Time (Min.)	Pressure (psig)	Temp (deg F)	Annotation
0	1748.76	94.02	Initial Hydro-static
1	18.80	94.12	Open To Flow (1)
30	69.91	99.21	Shut-In (1)
75	761.91	102.56	End Shut-In (1)
75	89.28	102.58	Open To Flow (2)
135	119.62	109.59	Shut-In (2)
226	764.92	110.15	End Shut-In (2)
226	1726.49	110.15	Final Hydro-static

Recovery		
Length (ft)	Description	Volume (bbl)
125.00	GMCO-10%G-30%M-60%O	0.61
210.00	G-Oil 10%G-90%oil	2.95
210.00	Gas in pipe	2.95

Gas Rates			
	Choke (inches)	Pressure (psig)	Gas Rate (Mcf/d)

DST Test Number: 1

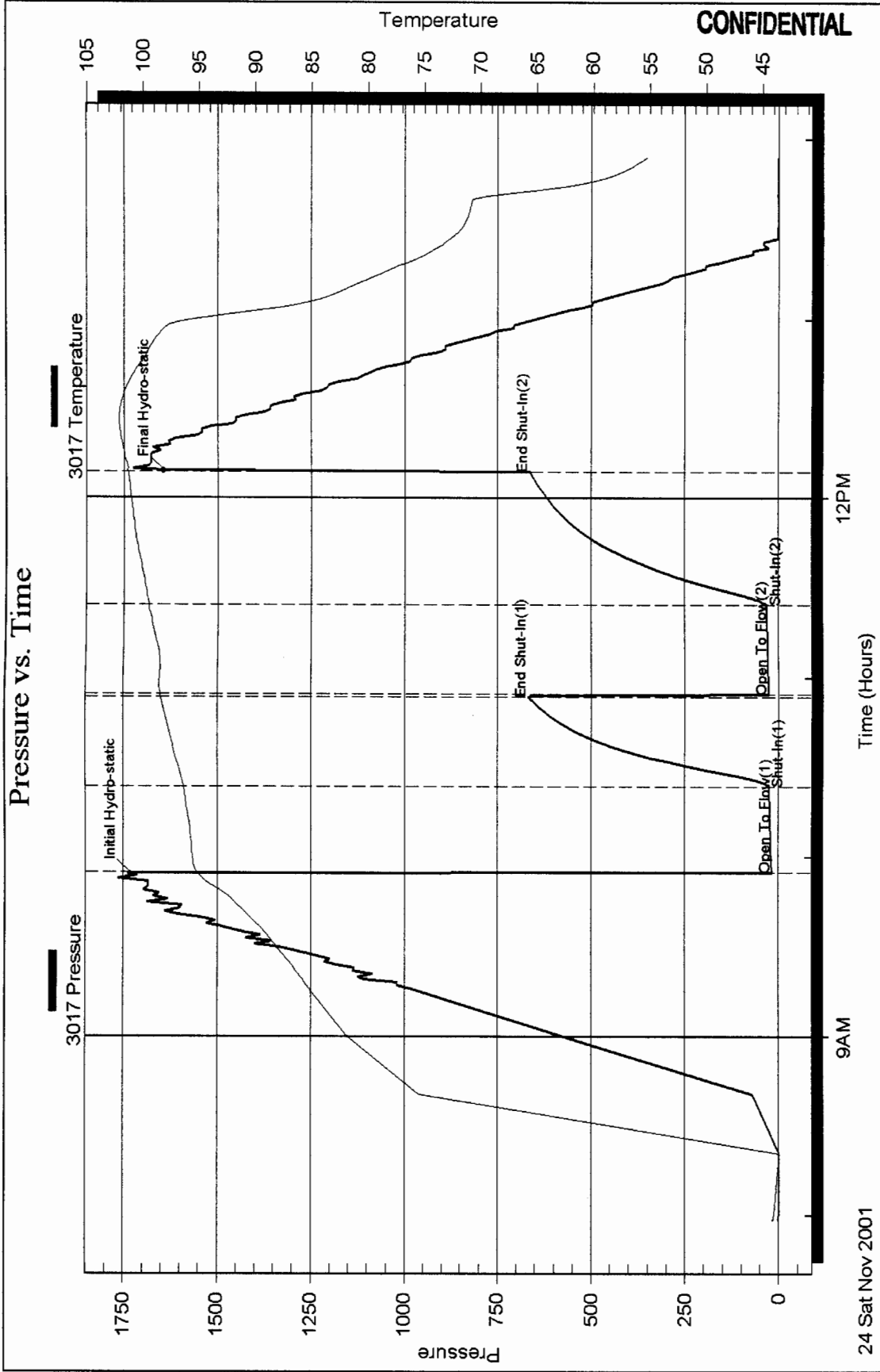
21--11s--20w

Imperial American Oil Corp.

Inside

Serial #: 3017

Pressure vs. Time



CONFIDENTIAL



**TRILOBITE
TESTING, INC.**

DRILL STEM TEST REPORT

TOOL DIAGRAM

Imperial American Oil Corp.

Diane #21-2

303 N.Carroll Blvd.#214
Denton, TX 76201

21-11s-20w

Job Ticket: 15648

DST#: 2

ATTN: Hal Porter

Test Start: 2001.11.24 @ 20:32:11

Tool Information

Drill Pipe: Length: 3395.00 ft	Diameter: 3.80 inches	Volume: 47.62 bbl	Tool Weight: 2500.00 lb
Heavy Wt. Pipe: Length: 0.00 ft	Diameter: 2.70 inches	Volume: 0.00 bbl	Weight set on Packer: 20000.00 lb
Drill Collar: Length: 125.00 ft	Diameter: 2.25 inches	Volume: 0.61 bbl	Weight to Pull Loose: 42000.00 lb
Total Volume: 48.23 bbl			Tool Chased 0.00 ft
Drill Pipe Above KB: 24.00 ft			String Weight: Initial 36000.00 lb
Depth to Top Packer: 3516.00 ft			KCC Final 38000.00 lb
Depth to Bottom Packer: ft			
Interval between Packers: 24.02 ft			
Tool Length: 44.02 ft			
Number of Packers: 2	Diameter: 6.75 inches		
Tool Comments:			


JAN 03 2002

CONFIDENTIAL

Tool Description	Length (ft)	Serial No.	Position	Depth (ft)	Accum. Lengths
C.O. Sub	1.00			3497.00	
S.I. Tool	5.00			3502.00	
HMV	5.00			3507.00	
Packer	4.00			3511.00	20.00 Bottom Of Top Packer
Packer	5.00			3516.00	
Stubb	1.00			3517.00	
Perforations	1.00			3518.00	
Recorder	0.01	3017	Inside	3518.01	
Perforations	19.00			3537.01	
Recorder	0.01	13308	Outside	3537.02	
Bullnose	3.00			3540.02	24.02 Bottom Packers & Anchor

Total Tool Length: 44.02

99703

 TRILOBITE TESTING, INC.	DRILL STEM TEST REPORT	FLUID SUMMARY
	Imperial American Oil Corp. 303 N. Carroll Blvd. #214 Denton, TX 76201 ATTN: Hal Porter	Diane #21-2 21-11s-20w Job Ticket: 15648 DST#: 2 Test Start: 2001.11.24 @ 20:32:11

Mud and Cushion Information

Mud Type: Gel Chem	Cushion Type:	Oil API: 25 deg API
Mud Weight: 9.00 lb/gal	Cushion Length: ft	Water Salinity: ppm
Viscosity: 45.00 sec/qt	Cushion Volume: bbl	
Water Loss: 8.36 in ³	Gas Cushion Type:	
Resistivity: ohm.m	Gas Cushion Pressure: psig	
Salinity: 4500.00 ppm		
Filter Cake: inches		

Recovery Information

Recovery Table

Length ft	Description	Volume bbl
125.00	GMCO- 10%G-30%M-60%O	0.615
210.00	G-Oil 10%G-90%oil	2.946
210.00	Gas in pipe	2.946

Total Length: 545.00 ft Total Volume: 6.507 bbl
 Num Fluid Samples: 0 Num Gas Bombs: 0 Serial #:
 Laboratory Name: Laboratory Location:
 Recovery Comments:

DST Test Number: 2

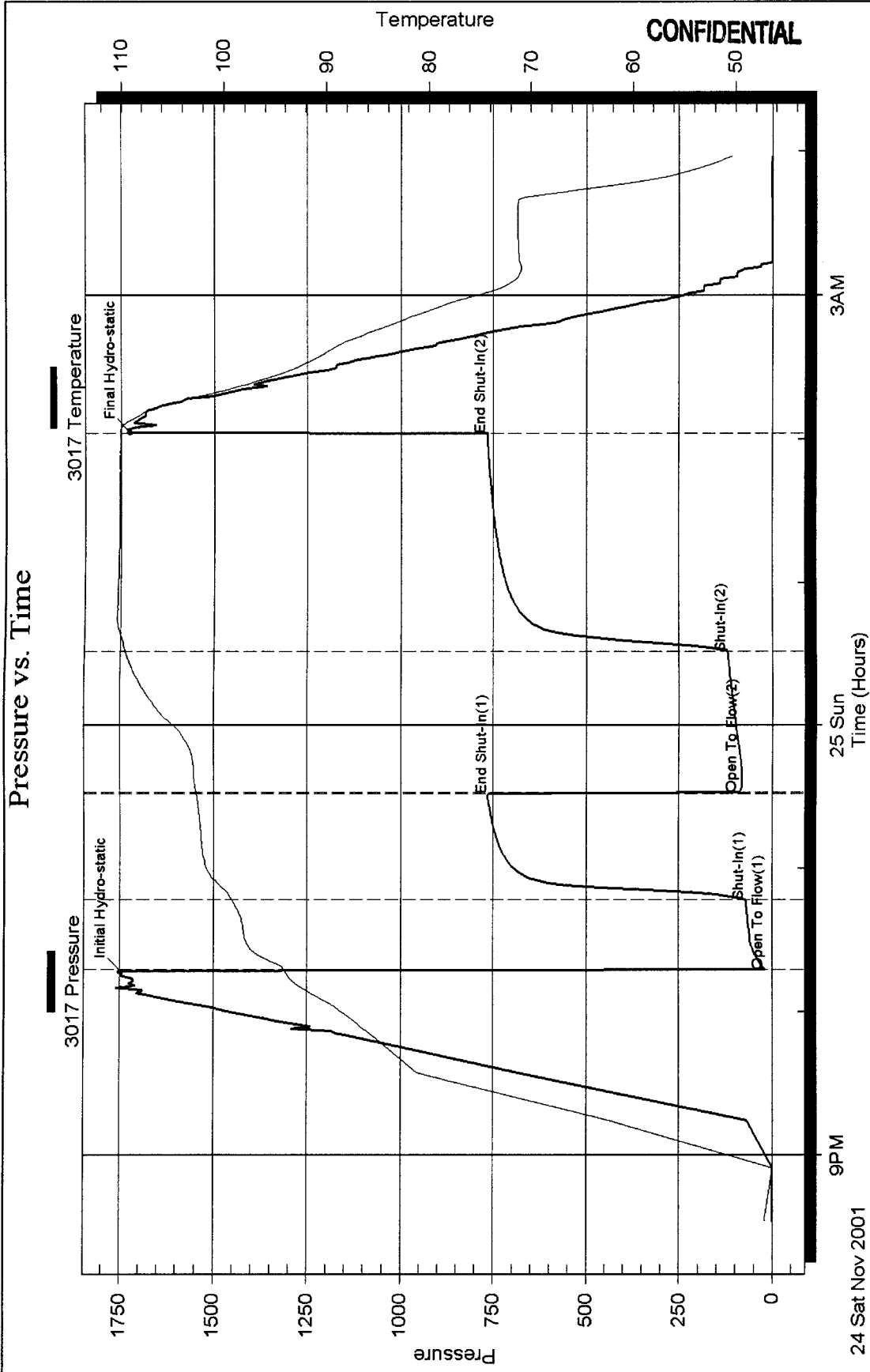
21--11s--20w

Imperial American Oil Corp.

Inside

Serial #: 3017

Pressure vs. Time



CONFIDENTIAL

ORIGINAL

KCC

JAN 03 2002

CONFIDENTIAL



TRILOBITE
TESTING, INC.

DRILL STEM TEST REPORT

Prepared For: **Imperial American Oil Corp.**

303 N. Carroll Blvd. #214
Denton, TX 76201

ATTN: Hal Porter

21--11s--20w

Diane #21-2

Start Date: 2001.11.25 @ 09:33:03

End Date: 2001.11.25 @ 16:37:03

Job Ticket #: 15649 DST #: 3

Trilobite Testing, Inc

PO Box 362 Hays, KS 67601

ph: 785-625-4778 fax: 785-625-5620

99903



DRILL STEM TEST REPORT

Imperial American Oil Corp.
 303 N.Carroll Blvd.#214
 Denton, TX 76201
 ATTN: Hal Porter

Diane #21-2
21-11s-20w
 Job Ticket: 15649 **DST#: 3**
 Test Start: 2001.11.25 @ 09:33:03

GENERAL INFORMATION:

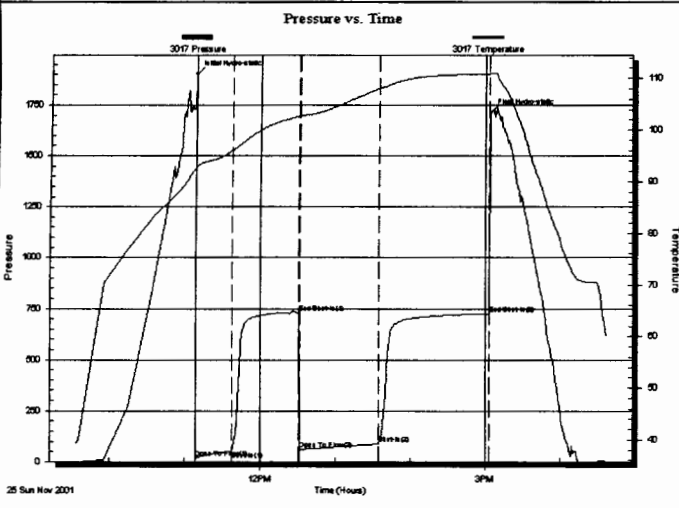
Formation: **L-Kc-G**
 Deviated: **No** Whipstock: ft (KB)
 Time Tool Opened: 11:09:03
 Time Test Ended: 16:37:03
 Interval: **3541.00 ft (KB) To 3555.00 ft (KB) (TVD)**
 Total Depth: **3555.00 ft (KB) (TVD)**
 Hole Diameter: **7.88 inches** Hole Condition: **Fair**
 Test Type: **Conventional Bottom Hole**
 Tester: **John Schmidt**
 Unit No: **18**
 Reference Elevations: **2149.00 ft (KB)**
2144.00 ft (CF)
 KB to GR/CF: **5.00 ft**

Serial #: 3017

Inside

Press@RunDepth: **88.17 psig @ 3542.01 ft (KB)** Capacity: **7000.00 psig**
 Start Date: **2001.11.25** End Date: **2001.11.25** Last Calib.: **2001.11.25**
 Start Time: **09:33:04** End Time: **16:37:03** Time On Btrm: **2001.11.25 @ 11:08:33**
 Time Off Btrm: **2001.11.25 @ 15:03:33**

TEST COMMENT: **IF- Weakbuilt to 5" in ISI-Weak blow back**
FF-Weak to fair built to 10" in FSI-Weak blow back



PRESSURE SUMMARY

Time (Min.)	Pressure (psig)	Temp (deg F)	Annotation
0	1901.90	92.61	Initial Hydro-static
1	17.60	92.81	Open To Flow (1)
29	52.59	96.02	Shut-In(1)
83	728.45	102.69	End Shut-In(1)
83	62.00	102.72	Open To Flow (2)
146	88.17	108.04	Shut-In(2)
235	726.12	110.90	End Shut-In(2)
235	1712.34	110.90	Final Hydro-static

Recovery

Length (ft)	Description	Volume (bbl)
80.00	GMOCW 10%G-15%O-20%M-55%W	0.39
110.00	GMCO 10%G-10%M-80%O	1.13
90.00	Gas in pipe	1.26

Gas Rates

	Choke (inches)	Pressure (psig)	Gas Rate (Mcf/d)



**TRILOBITE
TESTING, INC.**

DRILL STEM TEST REPORT

TOOL DIAGRAM

Imperial American Oil Corp.

Diane #21-2

303 N.Carroll Blvd.#214
Denton, TX 76201

21-11s-20w

ATTN: Hal Porter

CONFIDENTIAL

Job Ticket: 15649

DST#: 3

Test Start: 2001.11.25 @ 09:33:03

Tool Information

Drill Pipe:	Length: 3426.00 ft	Diameter: 3.80 inches	Volume: 48.06 bbl	Tool Weight: 2000.00 lb
Heavy Wt. Pipe:	Length: 0.00 ft	Diameter: 2.70 inches	Volume: 0.00 bbl	Weight set on Packer: 20000.00 lb
Drill Collar:	Length: 125.00 ft	Diameter: 2.25 inches	Volume: 0.61 bbl	Weight to Pull Loose: 45000.00 lb
			<u>Total Volume: 48.67 bbl</u>	Tool Chased 0.00 ft
Drill Pipe Above KB:	30.00 ft			String Weight: Initial 38000.00 lb
Depth to Top Packer:	3541.00 ft			Final 38000.00 lb
Depth to Bottom Packer:	ft			
Interval between Packers:	14.02 ft			
Tool Length:	34.02 ft			
Number of Packers:	2	Diameter: 6.75 inches		
Tool Comments:				


KCC

JAN 03 2002

CONFIDENTIAL

Tool Description	Length (ft)	Serial No.	Position	Depth (ft)	Accum. Lengths
C.O. Sub	1.00			3522.00	
S.I. Tool	5.00			3527.00	
HMV	5.00			3532.00	
Packer	4.00			3536.00	20.00 Bottom Of Top Packer
Packer	5.00			3541.00	
Stubb	1.00			3542.00	
Recorder	0.01	3017	Inside	3542.01	
Perforations	10.00			3552.01	
Recorder	0.01	13308	Outside	3552.02	
Bullnose	3.00			3555.02	14.02 Bottom Packers & Anchor
Total Tool Length:	34.02				

9903

 TRILOBITE TESTING, INC.	DRILL STEM TEST REPORT		FLUID SUMMARY
	Imperial American Oil Corp. 303 N.Carroll Blvd.#214 Denton, TX 76201 ATTN: Hal Porter	Diane #21-2 21-11s-20w Job Ticket: 15649 Test Start: 2001.11.25 @ 09:33:03	

Mud and Cushion Information

Mud Type: Gel Chem	Cushion Type:	Oil API:	deg API
Mud Weight: 9.00 lb/gal	Cushion Length: ft	Water Salinity:	70000 ppm
Viscosity: 41.00 sec/qt	Cushion Volume: bbl		
Water Loss: 9.56 in ³	Gas Cushion Type:		
Resistivity: ohm.m	Gas Cushion Pressure: psig		
Salinity: 5000.00 ppm			
Filter Cake: inches			

Recovery Information

Recovery Table

Length ft	Description	Volume bbl
80.00	GMOCW 10%G-15%O-20%M-55%W	0.393
110.00	GMCO 10%G-10%M-80%O	1.133
90.00	Gas in pipe	1.262

Total Length: 280.00 ft Total Volume: 2.788 bbl
 Num Fluid Samples: 0 Num Gas Bombs: 0 Serial #:
 Laboratory Name: Laboratory Location:
 Recovery Comments: RW .15@52F

CONFIDENTIAL

KCC

JAN 03 2002

DST Test Number: 3

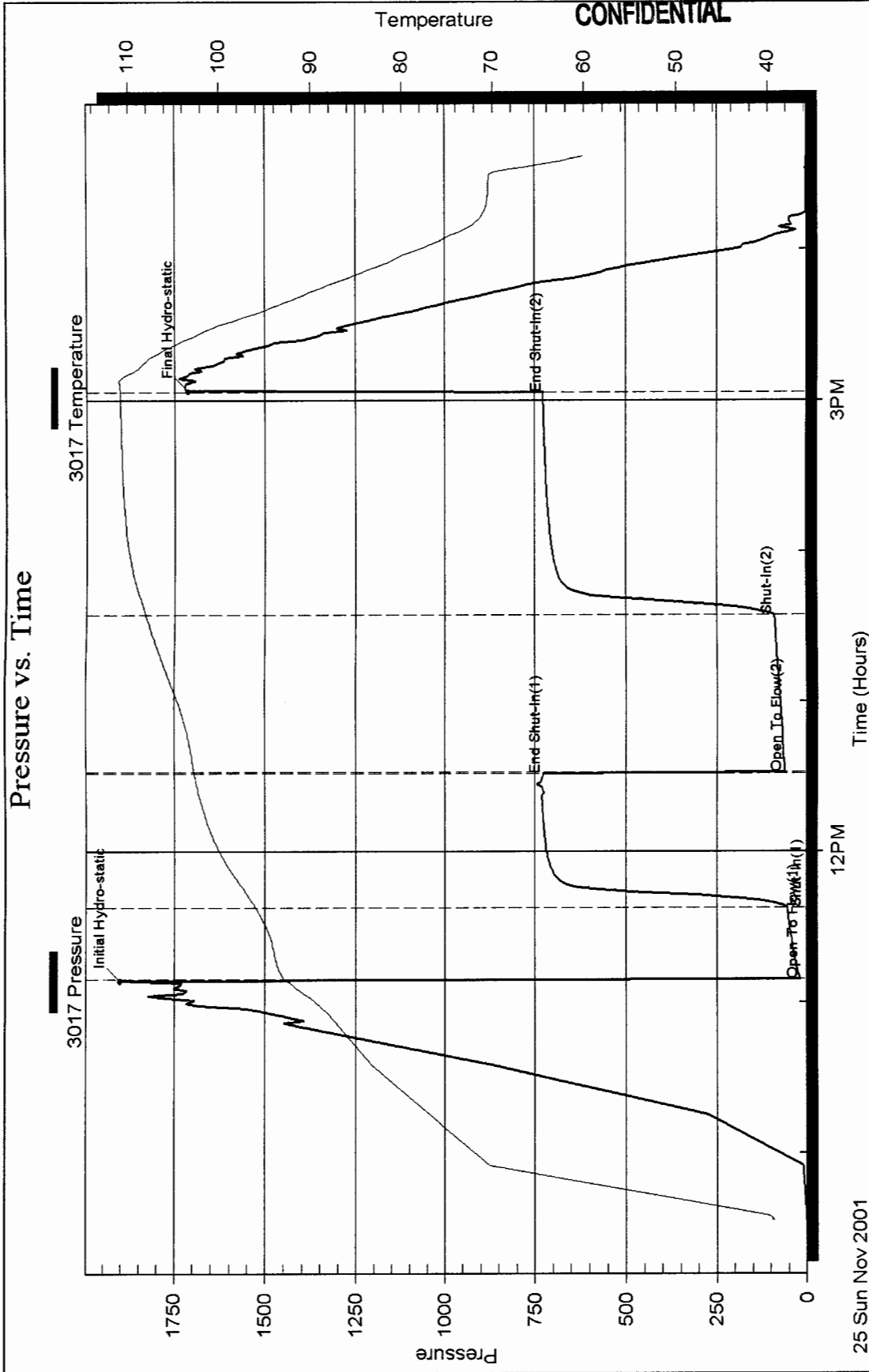
21--11s--20w

Imperial American Oil Corp.

Inside

Serial #: 3017

Pressure vs. Time



25 Sun Nov 2001

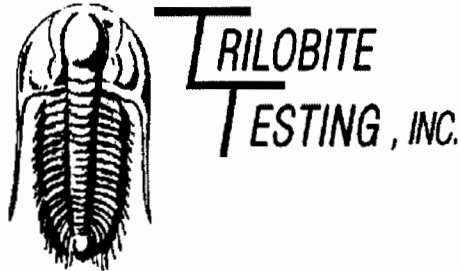
ORIGINAL

CONFIDENTIAL

KCC

JAN 03 2002

CONFIDENTIAL



DRILL STEM TEST REPORT

Prepared For: **Imperial American Oil Corp.**

303 N. Carroll Blvd. #214
Denton, TX 76201

ATTN: Hal Porter

21-11s-20w

Diane #21-2

Start Date: 2001.11.26 @ 01:58:48

End Date: 2001.11.26 @ 09:17:48

Job Ticket #: 15650 DST #: 4

Trilobite Testing, Inc

PO Box 362 Hays, KS 67601

ph: 785-625-4778 fax: 785-625-5620

Imperial American Oil Corp.

Diane #21-2

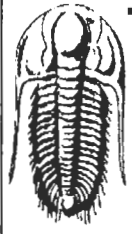
21-11s-20w

DST # 4

L-KC-J

2001.11.26

99903



TRILOBITE TESTING, INC.

DRILL STEM TEST REPORT

Imperial American Oil Corp.
 303 N.Carroll Blvd.#214
 Denton, TX 76201
 ATTN: Hal Porter

Diane #21-2
21-11s-20w
 Job Ticket: 15650 **DST#: 4**
 Test Start: 2001.11.26 @ 01:58:48

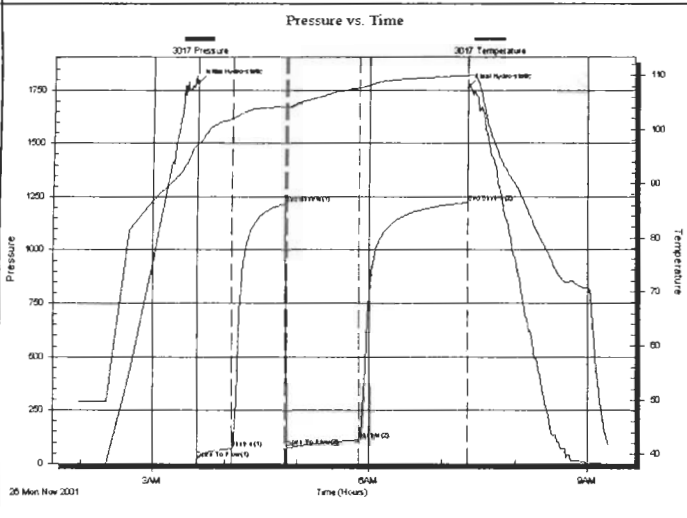
GENERAL INFORMATION:

Formation: **L-Kc-J**
 Deviated: No Whipstock: ft (KB)
 Time Tool Opened: 03:37:18
 Time Test Ended: 09:17:48
 Interval: **3602.00 ft (KB) To 3640.00 ft (KB) (TVD)**
 Total Depth: 3640.00 ft (KB) (TVD)
 Hole Diameter: 7.88 inches Hole Condition: Fair
 Test Type: Conventional Bottom Hole
 Tester: John Schmidt
 Unit No: 18
 Reference Elevations: 2149.00 ft (KB)
 2144.00 ft (CF)
 KB to GR/CF: 5.00 ft

Serial #: 3017

Inside
 Press@RunDepth: 110.16 psig @ 3605.01 ft (KB) Capacity: 7000.00 psig
 Start Date: 2001.11.26 End Date: 2001.11.26 Last Calib.: 2001.11.26
 Start Time: 01:58:49 End Time: 09:17:48 Time On Btm: 2001.11.26 @ 03:36:48
 Time Off Btm: 2001.11.26 @ 07:21:18

TEST COMMENT: IF-Fair B.O.B.in 25 min. ISI-Weak blow back
 FF-Fair B.O.B. in 27 min. FSI-Weak blow back



PRESSURE SUMMARY			
Time (Min.)	Pressure (psig)	Temp (deg F)	Annotation
0	1782.98	97.23	Initial Hydro-static
1	20.46	97.38	Open To Flow (1)
29	70.91	102.08	Shut-In(1)
74	1219.15	104.28	End Shut-In(1)
75	78.98	104.33	Open To Flow (2)
135	110.16	107.74	Shut-In(2)
224	1222.40	109.98	End Shut-In(2)
225	1761.77	109.99	Final Hydro-static

Recovery		
Length (ft)	Description	Volume (bbl)
245.00	SI-M-G-O-5%M5%G90oil	2.30
300.00	Gas in pipe	4.21

Gas Rates			
	Choke (inches)	Pressure (psig)	Gas Rate (Mcf/d)



**TRILOBITE
TESTING, INC.**

DRILL STEM TEST REPORT

TOOL DIAGRAM

Imperial American Oil Corp.

Diane #21-2

303 N.Carroll Blvd.#214
Denton, TX 76201

21-11s-20w

Job Ticket: 15650

DST#: 4

ATTN: Hal Porter

CONFIDENTIAL

Test Start: 2001.11.26 @ 01:58:48

Tool Information

Drill Pipe:	Length: 3459.00 ft	Diameter: 3.80 inches	Volume: 48.52 bbl	Tool Weight: 3000.00 lb
Heavy Wt. Pipe:	Length: 0.00 ft	Diameter: 2.70 inches	Volume: 0.00 bbl	Weight set on Packer: 20000.00 lb
Drill Collar:	Length: 125.00 ft	Diameter: 2.25 inches	Volume: 0.61 bbl	Weight to Pull Loose: 45000.00 lb
			<u>Total Volume: 49.13 bbl</u>	Tool Chased 0.00 ft
Drill Pipe Above KB:	2.00 ft			String Weight: Initial 39000.00 lb
Depth to Top Packer:	3602.00 ft			Final 40000.00 lb
Depth to Bottom Packer:	ft			
Interval between Packers:	38.02 ft			
Tool Length:	58.02 ft			
Number of Packers:	2	Diameter: 6.75 inches		
Tool Comments:				

KCC

JAN 05 2002

CONFIDENTIAL

Tool Description	Length (ft)	Serial No.	Position	Depth (ft)	Accum. Lengths
C.O. Sub	1.00			3583.00	
S.I. Tool	5.00			3588.00	
HMV	5.00			3593.00	
Packer	4.00			3597.00	20.00 Bottom Of Top Packer
Packer	5.00			3602.00	
Stubb	1.00			3603.00	
Perforations	2.00			3605.00	
Recorder	0.01	3017	Inside	3605.01	
Perforations	32.00			3637.01	
Recorder	0.01	13308	Outside	3637.02	
Bullnose	3.00			3640.02	38.02 Bottom Packers & Anchor

Total Tool Length: 58.02

99903



**TRILOBITE
TESTING, INC.**

DRILL STEM TEST REPORT

FLUID SUMMARY

Imperial American Oil Corp.
303 N.Carroll Blvd.#214
Denton, TX 76201
ATTN: Hal Porter

Diane #21-2
21-11s-20w
Job Ticket: 15650 **DST#: 4**
Test Start: 2001.11.26 @ 01:58:48

Mud and Cushion Information

Mud Type: Gel Chem	Cushion Type:	Oil API: 25 deg API
Mud Weight: 9.00 lb/gal	Cushion Length: ft	Water Salinity: ppm
Viscosity: 50.00 sec/qt	Cushion Volume: bbl	
Water Loss: 9.56 in ³	Gas Cushion Type:	
Resistivity: ohm.m	Gas Cushion Pressure: psig	
Salinity: 5000.00 ppm		
Filter Cake: inches		

Recovery Information

Recovery Table

Length ft	Description	Volume bbl
245.00	SI.M-G-O-5%M5%G90oil	2.298
300.00	Gas in pipe	4.208

Total Length: 545.00 ft Total Volume: 6.506 bbl

Num Fluid Samples: 0 Num Gas Bombs: 0 Serial #:

Laboratory Name: Laboratory Location:

Recovery Comments:

CONFIDENTIAL

DST Test Number: 4

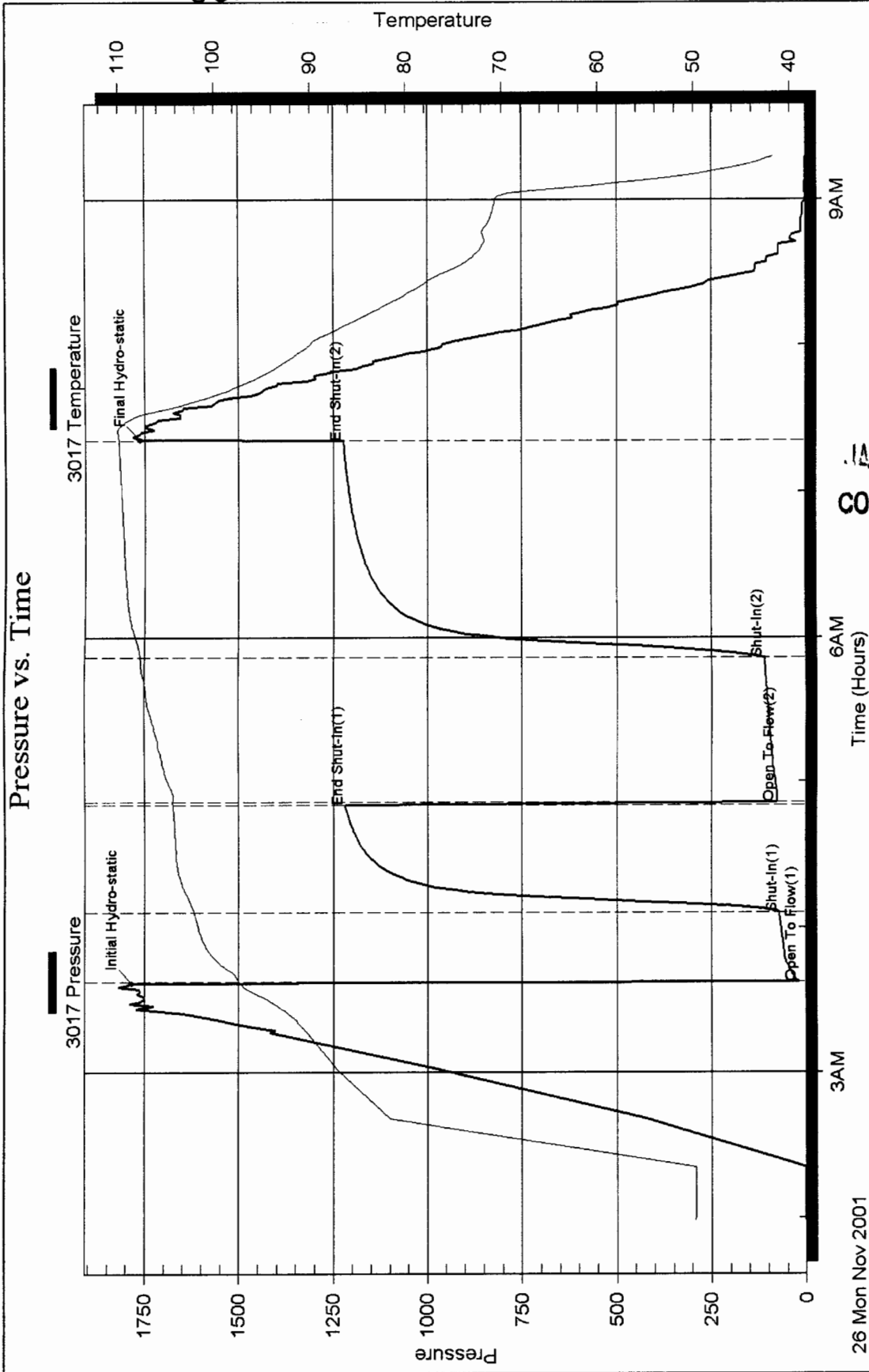
21--11s--20w

Imperial American Oil Corp.

Inside

Serial #: 3017

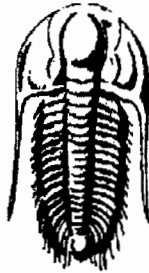
Pressure vs. Time



KCC
JAN 05 2002
CONFIDENTIAL

CONFIDENTIAL

ORIGINAL



TRILOBITE
TESTING, INC.

KCC

JAN 03 2002

CONFIDENTIAL

DRILL STEM TEST REPORT

Prepared For: **Imperial American Oil Corp.**

303 N.Carroll Blvd.#214
Denton, TX 76201

ATTN: Hal Porter

21-11s-20w

Diane #21-2

Start Date: 2001.11.26 @ 21:50:15

End Date: 2001.11.27 @ 05:12:45

Job Ticket #: 15576 DST #: 5

Trilobite Testing, Inc

PO Box 362 Hays, KS 67601

ph: 785-625-4778 fax: 785-625-5620

99903



TRILOBITE TESTING, INC.

DRILL STEM TEST REPORT

Imperial American Oil Corp.

Diane #21-2

303 N. Carroll Blvd. #214
Denton, TX 76201

21-11s-20w

ATTN: Hal Porter

Job Ticket: 15576

DST#: 5

Test Start: 2001.11.26 @ 21:50:15

GENERAL INFORMATION:

Formation: **Arbuckle**

Deviated: **No** Whipstock: **ft (KB)**

Time Tool Opened: 23:52:45

Time Test Ended: 05:12:45

Test Type: **Conventional Bottom Hole**

Tester: **John Schmidt**

Unit No: **18**

Interval: **3750.00 ft (KB) To 3785.00 ft (KB) (TVD)**

Reference Elevations: **2149.00 ft (KB)**

Total Depth: **3785.00 ft (KB) (TVD)**

2144.00 ft (CF)

Hole Diameter: **7.88 inches** Hole Condition: **Fair**

KB to GR/CF: **5.00 ft**

Serial #: 3017

Inside

Press@RunDepth: **902.36 psig @ 3753.01 ft (KB)**

Capacity: **7000.00 psig**

Start Date: **2001.11.26**

End Date: **2001.11.27**

Last Calib.: **2001.11.27**

Start Time: **21:50:16**

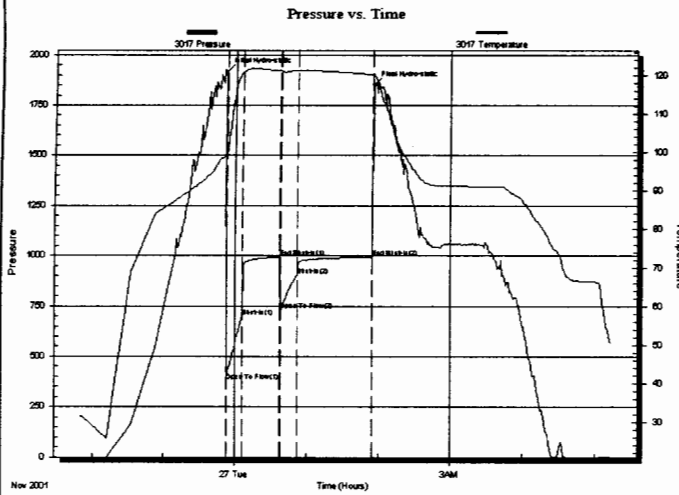
End Time: **05:12:45**

Time On Btm: **2001.11.26 @ 23:51:45**

Time Off Btm: **2001.11.27 @ 01:55:15**

TEST COMMENT: **IF-Strong B.O.B.in 1min.**
FF-Strong B.O.B.in 1min.

IS-no blow
FS-no blow



PRESSURE SUMMARY

Time (Min.)	Pressure (psig)	Temp (deg F)	Annotation
0	1916.92	99.01	Initial Hydro-static
1	376.31	99.39	Open To Flow (1)
15	693.64	120.79	Shut-In(1)
46	992.64	121.09	End Shut-In(1)
47	727.66	121.08	Open To Flow (2)
61	902.36	121.17	Shut-In(2)
123	992.63	120.17	End Shut-In(2)
124	1851.41	120.14	Final Hydro-static


Recovery

Length (ft)	Description	Volume (bbl)
2175.00	SL.Gas Cut Oil	29.37

Gas Rates

	Choke (inches)	Pressure (psig)	Gas Rate (Mcf/d)

CONFIDENTIAL

 TRILOBITE TESTING, INC.	DRILL STEM TEST REPORT	TOOL DIAGRAM
	Imperial American Oil Corp. 303 N.Carroll Blvd.#214 Denton, TX 76201 ATTN: Hal Porter	Diane #21-2 21-11s-20w Job Ticket: 15576 DST#: 5 Test Start: 2001.11.26 @ 21:50:15

Tool Information

Drill Pipe:	Length: 3613.00 ft	Diameter: 3.80 inches	Volume: 50.68 bbl	Tool Weight: 3000.00 lb
Heavy Wt. Pipe:	Length: 0.00 ft	Diameter: 2.70 inches	Volume: 0.00 bbl	Weight set on Packer: 20000.00 lb
Drill Collar:	Length: 125.00 ft	Diameter: 2.25 inches	Volume: 0.61 bbl	Weight to Pull Loose: 48000.00 lb
		Total Volume: 51.29 bbl		Tool Chased 0.00 ft
Drill Pipe Above KB:	8.00 ft			String Weight: Initial 39000.00 lb
Depth to Top Packer:	3750.00 ft			Final 45000.00 lb
Depth to Bottom Packer:	ft			
Interval between Packers:	35.02 ft			
Tool Length:	55.02 ft			
Number of Packers:	2	Diameter: 6.75 inches		
Tool Comments:				

KCC

JAN 05 2002

CONFIDENTIAL

Tool Description	Length (ft)	Serial No.	Position	Depth (ft)	Accum. Lengths
C.O. Sub	1.00			3731.00	
S.I. Tool	5.00			3736.00	
HMV	5.00			3741.00	
Packer	4.00			3745.00	20.00 Bottom Of Top Packer
Packer	5.00			3750.00	
Stubb	1.00			3751.00	
Perforations	2.00			3753.00	
Recorder	0.01	3017	Inside	3753.01	
Perforations	29.00			3782.01	
Recorder	0.01	13308	Outside	3782.02	
Bullnose	3.00			3785.02	35.02 Bottom Packers & Anchor

Total Tool Length: 55.02

99903



TRILOBITE TESTING, INC.

DRILL STEM TEST REPORT

FLUID SUMMARY

Imperial American Oil Corp.
303 N.Carroll Blvd.#214
Denton, TX 76201
ATTN: Hal Porter

Diane #21-2
21-11s-20w
Job Ticket: 15576 **DST#: 5**
Test Start: 2001.11.26 @ 21:50:15

Mud and Cushion Information

Mud Type: Gel Chem	Cushion Type:	Oil API: 26 deg API
Mud Weight: 10.00 lb/gal	Cushion Length: ft	Water Salinity: ppm
Viscosity: 45.00 sec/qt	Cushion Volume: bbl	
Water Loss: 9.16 in ³	Gas Cushion Type:	
Resistivity: ohm.m	Gas Cushion Pressure: psig	
Salinity: 5000.00 ppm		
Filter Cake: inches		

Recovery Information

Recovery Table

Length ft	Description	Volume bbl
2175.00	SL Gas Cut Oil	29.371

Total Length: 2175.00 ft Total Volume: 29.371 bbl

Num Fluid Samples: 0 Num Gas Bombs: 0 Serial #:

Laboratory Name: Laboratory Location:

Recovery Comments:

CONFIDENTIAL



TRILOBITE
TESTING, INC.

DRILL STEM TEST REPORT

GAS RATES

Imperial American Oil Corp.
303 N.Carroll Blvd.#214
Denton, TX 76201
ATTN: Hal Porter

Diane #21-2
21-11s-20w
Job Ticket: 15576 **DST#: 5**
Test Start: 2001.11.26 @ 21:50:15

Gas Rates Information

Temperature: 59 deg C
Relative Density: 0.65
Z Factor: 0.8

Gas Rates Table

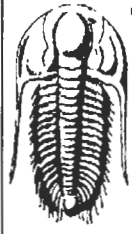
Flow Period	Elapsed Time	Choke (mm)	Pressure (kPaa)	Gas Rate (m ³ /d)
		0.00	0.00	0.00

KCC

JAN 0 3 2002

CONFIDENTIAL

99903



**TRILOBITE
TESTING, INC.**

DRILL STEM TESTING - DATA LISTING

Imperial American Oil Corp.
303 N.Carroll Blvd.#214
Denton, TX 76201
ATTN: Hal Porter

Diane #21-2
21--11s--20w
Job Ticket: 15576 **DST#: 5**
Test Start: 2001.11.26 @ 21:50:15

Serial # 3017 Inside				Serial # 3017 Inside			
Comments	Time (Min.)	Pressure (psig)	Temp. (deg F)	Comments	Time (Min.)	Pressure (psig)	Temp. (deg F)
	0.0	1.12	31.5		1.6	0.44	31.5
	0.1	0.88	31.5		1.7	0.44	31.5
	0.1	0.80	31.5		1.8	0.44	31.5
	0.2	0.74	31.6		1.8	0.42	31.4
	0.2	0.72	31.6		1.9	0.44	31.4
	0.3	0.72	31.6		1.9	0.44	31.4
	0.3	0.70	31.6		2.0	0.44	31.4
	0.3	0.72	31.6		22.0	0.16	25.7
	0.4	0.68	31.6		52.0	418.78	82.0
	0.4	0.68	31.6		77.5	953.13	87.0
	0.5	0.38	31.6		79.0	979.53	87.4
	0.6	0.42	31.6		80.5	1084.67	87.8
	0.6	0.42	31.6		82.0	1075.52	88.1
	0.6	0.38	31.6		83.5	1106.70	88.4
	0.7	0.40	31.6		85.0	1088.52	88.7
	0.8	0.46	31.6		86.5	1166.44	89.0
	0.8	0.40	31.6		88.0	1198.16	89.3
	0.9	0.44	31.6		89.5	1269.64	89.7
	0.9	0.42	31.6		91.0	1295.80	90.0
	0.9	0.40	31.6		92.5	1370.04	90.3
	1.0	0.40	31.5		94.0	1401.12	90.6
	1.0	0.40	31.5		95.5	1419.43	91.0
	1.1	0.36	31.5		97.0	1496.41	91.3
	1.1	0.40	31.5		98.5	1516.10	91.7
	1.2	0.40	31.5		100.0	1495.85	92.1
	1.3	0.38	31.5		101.5	1648.24	92.3
	1.3	0.40	31.5		103.0	1620.48	92.7
	1.4	0.42	31.5		104.5	1650.08	93.1
	1.4	0.38	31.5		106.0	1845.75	93.6
	1.5	0.40	31.5		107.5	1815.82	94.1
	1.5	0.40	31.5		109.0	1764.21	94.5
	1.5	0.40	31.5		110.5	1804.23	94.9
	1.6	0.44	31.5		112.0	1834.19	95.5

Printing every 3 samples

CONFIDENTIAL

Serial # 3017 Inside				Serial # 3017 Inside			
Comments	Time (Min.)	Pressure (psig)	Temp. (deg F)	Comments	Time (Min.)	Pressure (psig)	Temp. (deg F)
	113.5	1864.81	96.4		164.5	991.78	121.2
	115.0	1837.81	97.3		166.0	992.22	121.1
	116.5	1837.41	97.9		166.5	992.38	121.1
	118.0	1886.62	98.3		167.0	992.52	121.1
	119.5	1858.06	98.6	End Shut-In(1)	167.5	992.64	121.1
	120.5	1927.68	98.8	Open To Flow (2)	168.0	727.66	121.1
	121.0	1922.07	98.9		168.5	734.79	121.0
Initial Hydro-static	121.5	1916.92	99.0		169.0	741.34	121.0
	122.0	470.05	99.2		170.5	765.14	120.8
Open To Flow (1)	122.5	376.31	99.4	KCC	172.0	788.25	120.8
	123.0	437.61	99.8	JAN 03 2002	173.5	810.84	120.9
	124.5	440.65	103.5	CONFIDENTIAL	175.0	831.41	121.0
	126.0	479.43	108.1		176.5	849.83	121.1
	127.5	514.11	112.0		178.0	866.89	121.1
	129.0	550.10	115.0		179.5	881.49	121.2
	130.5	584.57	117.2		181.0	894.57	121.2
	132.0	616.81	118.7		181.5	898.54	121.2
	133.5	647.42	119.8	Shut-In(2)	182.0	902.36	121.2
	135.0	675.23	120.5		182.5	963.75	121.2
	135.5	684.53	120.6		183.0	967.23	121.2
Shut-In(1)	136.0	693.64	120.8		183.5	969.23	121.2
	136.5	947.70	120.9		185.0	972.80	121.2
	137.0	956.40	121.0		186.5	975.12	121.2
	137.5	961.04	121.1		188.0	976.84	121.2
	139.0	968.51	121.4		189.5	978.23	121.2
	140.5	972.92	121.5		191.0	979.39	121.2
	142.0	976.06	121.7		192.5	980.41	121.2
	143.5	978.55	121.7		194.0	981.29	121.2
	145.0	980.53	121.7		195.5	982.05	121.1
	146.5	982.15	121.7		197.0	982.79	121.1
	148.0	983.55	121.7		198.5	983.45	121.1
	149.5	984.75	121.6		200.0	984.03	121.1
	151.0	985.82	121.6		201.5	984.59	121.1
	152.5	986.76	121.5		203.0	985.09	121.0
	154.0	987.60	121.5		204.5	985.58	121.0
	155.5	988.34	121.4		206.0	986.00	121.0
	157.0	989.08	121.4		207.5	986.44	121.0
	158.5	989.68	121.3		209.0	986.84	120.9
	160.0	990.30	121.3		210.5	987.20	120.9
	161.5	990.82	121.2		212.0	987.54	120.9
	163.0	991.32	121.2		213.5	987.88	120.9

Printing every 3 samples

19703

Serial # 3017 Inside				Serial # 3017 Inside			
Comments	Time (Min.)	Pressure (psig)	Temp. (deg F)	Comments	Time (Min.)	Pressure (psig)	Temp. (deg F)
	215.0	988.22	120.8		271.5	1461.04	98.9
	216.5	988.50	120.8		273.0	1388.38	98.2
	218.0	988.84	120.8		274.5	1345.75	97.5
	219.5	989.10	120.8		276.0	1338.56	96.8
	221.0	989.36	120.7		277.5	1298.72	96.1
	222.5	989.66	120.7		279.0	1217.17	95.4
	224.0	989.92	120.7		280.5	1208.22	94.7
	225.5	990.14	120.6		282.0	1152.22	94.0
	227.0	990.36	120.6		283.5	1092.04	93.4
	228.5	990.62	120.5		285.0	1081.14	92.9
	230.0	990.84	120.5		286.5	1103.02	92.5
	231.5	991.06	120.5		288.0	1086.43	92.2
	233.0	991.24	120.4		289.5	1088.78	91.9
	234.5	991.46	120.4		291.0	1043.19	91.8
	236.0	991.62	120.4		292.5	1051.46	91.7
	237.5	991.82	120.3		294.0	1047.24	91.5
	239.0	992.02	120.3		295.5	1043.59	91.5
	240.5	992.18	120.3		297.0	1042.41	91.4
	242.0	992.38	120.2		298.5	1042.67	91.4
	243.5	992.56	120.2		300.0	1041.83	91.3
	244.0	992.61	120.2		301.5	1040.61	91.3
End Shut-In(2)	244.5	992.63	120.2		303.0	1049.70	91.3
Final Hydro-static	245.0	1851.41	120.1		304.5	1057.81	91.3
	245.5	1833.35	120.1		306.0	1058.21	91.3
	246.0	1871.26	120.0		307.5	1058.80	91.3
	247.5	1855.18	119.0		309.0	1058.80	91.3
	249.0	1811.14	117.8		310.5	1058.05	91.3
	250.5	1837.37	116.1		312.0	1058.05	91.3
	252.0	1839.28	114.5		313.5	1057.87	91.3
	253.5	1839.26	113.3		315.0	1058.02	91.2
	255.0	1850.93	112.5		316.5	1058.53	91.2
	256.5	1809.38	111.4		318.0	1056.93	91.2
	258.0	1727.24	109.6		319.5	1054.99	91.2
	259.5	1684.25	107.8		321.0	1058.86	91.2
	261.0	1698.34	106.2		322.5	1055.91	91.2
	262.5	1650.92	104.8		324.0	1058.29	91.2
	264.0	1583.65	103.5		325.5	1058.80	91.2
	265.5	1535.08	102.4		327.0	1058.73	91.2
	267.0	1490.16	101.4		328.5	1062.46	91.2
	268.5	1461.42	100.4		330.0	1057.87	91.2
	270.0	1473.12	99.5		331.5	1055.19	91.2

Printing every 3 samples

CONFIDENTIAL

Serial # 3017 Inside				Serial # 3017 Inside			
Comments	Time (Min.)	Pressure (psig)	Temp. (deg F)	Comments	Time (Min.)	Pressure (psig)	Temp. (deg F)
	333.0	1055.95	91.2		394.5	1.56	75.3
	334.5	1055.89	91.2		396.0	1.44	74.8
	336.0	1055.57	91.2		397.5	2.26	74.4
	337.5	1040.63	91.2		399.0	2.14	73.9
	339.0	1059.50	91.1		400.5	71.85	72.8
	340.5	1055.09	91.1		402.0	72.69	71.0
	342.0	1024.01	91.1		403.5	2.73	69.5
	343.5	1015.76	91.1		405.0	2.64	68.4
	345.0	985.96	91.1		406.5	1.32	67.6
	346.5	979.79	91.1		408.0	1.23	67.2
	348.0	966.69	91.1		409.5	1.20	66.9
	349.5	943.04	91.1		411.0	1.20	66.7
	351.0	928.30	91.1		412.5	1.20	66.7
	352.5	902.08	91.1		414.0	1.15	66.6
	354.0	896.47	90.9		415.5	1.17	66.6
	355.5	852.65	90.6		417.0	1.11	66.5
	357.0	863.81	90.2		418.5	1.15	66.5
	358.5	818.63	89.8		420.0	1.13	66.4
	360.0	817.11	89.5		421.5	1.14	66.4
	361.5	786.20	89.3		423.0	1.17	66.4
	363.0	789.83	89.0		424.5	1.15	66.4
	364.5	787.37	88.7		426.0	1.16	66.3
	366.0	752.86	88.5		427.5	1.16	66.3
	367.5	717.19	88.2		429.0	1.19	66.3
	369.0	683.20	87.7		430.5	1.19	66.3
	370.5	646.97	87.1		432.0	1.14	66.3
	372.0	611.45	86.5		433.5	2.60	65.7
	373.5	535.02	85.8		435.0	2.66	62.1
	375.0	501.84	85.2		436.5	2.16	58.6
	376.5	455.37	84.4		438.0	1.88	55.8
	378.0	396.97	83.6		439.5	1.70	53.6
	379.5	402.26	82.9		441.0	1.58	51.8
	381.0	331.83	82.3		442.5	1.47	50.4
	382.5	297.22	81.7				
	384.0	267.64	81.2				
	385.5	237.84	80.5				
	387.0	206.28	79.9				
	388.5	132.48	79.0				
	390.0	105.08	78.1				
	391.5	73.11	77.1				
	393.0	39.07	76.1				

KCC
 JAN 03 2002
CONFIDENTIAL

CONFIDENTIAL

ORIGINAL



**TRILOBITE
TESTING, INC.**

KCC

JAN 03 2002

CONFIDENTIAL

DRILL STEM TEST REPORT

Prepared For: **Imperial American Oil Corp.**

303 N. Carroll Blvd. #214
Denton, TX 76201

ATTN: Hal Porter

21-11s-20w

Diane #21-2

Start Date: 2001.11.27 @ 13:10:02

End Date: 2001.11.27 @ 20:33:32


Job Ticket #: 15577 DST #: 6

Trilobite Testing, Inc

PO Box 362 Hays, KS 67601

ph: 785-625-4778 fax: 785-625-5620

99903

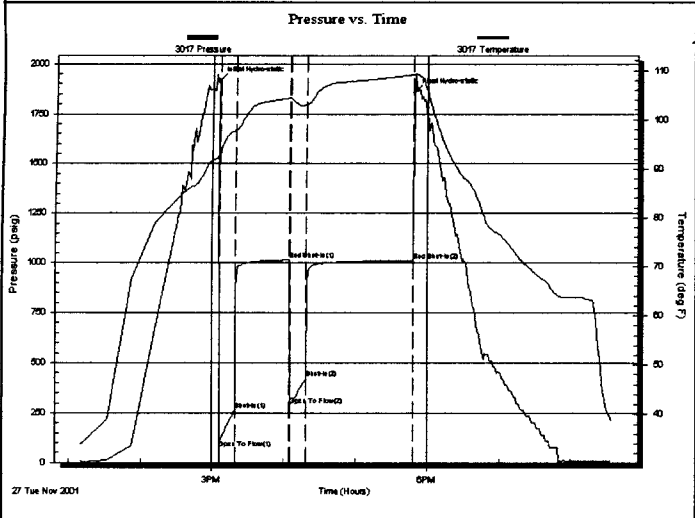
 TRIOLOBITE TESTING, INC.	DRILL STEM TEST REPORT	
	<table style="width:100%;"> <tr> <td style="width:50%;"> Imperial American Oil Corp. 303 N.Carroll Blvd.#214 Denton, TX 76201 ATTN: Hal Porter </td> <td style="width:50%; text-align: right;"> Diane #21-2 21-11s-20w Job Ticket: 15577 DST#: 6 Test Start: 2001.11.27 @ 13:10:02 </td> </tr> </table>	Imperial American Oil Corp. 303 N.Carroll Blvd.#214 Denton, TX 76201 ATTN: Hal Porter
Imperial American Oil Corp. 303 N.Carroll Blvd.#214 Denton, TX 76201 ATTN: Hal Porter	Diane #21-2 21-11s-20w Job Ticket: 15577 DST#: 6 Test Start: 2001.11.27 @ 13:10:02	

GENERAL INFORMATION:

Formation: ARBUCKLE	Test Type: Conventional Bottom Hole
Deviated: No Whipstock: ft (KB)	Tester: John Schmidt
Time Tool Opened: 15:05:32	Unit No: 18
Time Test Ended: 20:33:32	Reference Elevations: 2149.00 ft (KB)
Interval: 3784.00 ft (KB) To 3803.00 ft (KB) (TVD)	2144.00 ft (CF)
Total Depth: 3803.00 ft (KB) (TVD)	KB to GR/CF: 5.00 ft
Hole Diameter: 7.88 inches	Hole Condition: Fair

Serial #: 3017	Inside	Capacity: 7000.00 psig
Press@RunDepth: 422.92 psig @ 3785.01 ft (KB)	Start Date: 2001.11.27	Last Calib.: 2001.11.27
End Date: 2001.11.27	Start Time: 13:10:03	Time On Btm: 2001.11.27 @ 15:05:02
End Time: 20:33:32		Time Off Btm: 2001.11.27 @ 17:48:32

TEST COMMENT: IF-Strong B.O.B.in 2min. IS-Weak blow back
 FF-Strong B.O.B. in 2min. FSI-no blow back



PRESSURE SUMMARY			
Time (Min.)	Pressure (psig)	Temp (deg F)	Annotation
0	1917.21	92.67	Initial Hydro-static
1	71.04	92.96	Open To Flow (1)
14	266.29	97.83	Shut-In(1)
60	1013.67	104.41	End Shut-In(1)
61	286.76	104.44	Open To Flow (2)
74	422.92	103.05	Shut-In(2)
163	1012.52	109.13	End Shut-In(2)
164	1857.05	109.13	Final Hydro-static

Recovery		
Length (ft)	Description	Volume (bbl)
1020.00	SL.G-C-Oil	13.17

Gas Rates			
	Choke (inches)	Pressure (psig)	Gas Rate (Mcf/d)

CONFIDENTIAL



**TRILOBITE
TESTING, INC.**

DRILL STEM TEST REPORT

TOOL DIAGRAM

Imperial American Oil Corp.

Diane #21-2

303 N. Carroll Blvd. #214
Denton, TX 76201

21-11s-20w

Job Ticket: 15577

DST#: 6

ATTN: Hal Porter

Test Start: 2001.11.27 @ 13:10:02

Tool Information

Drill Pipe: Length: 3645.00 ft Diameter: 3.80 inches Volume: 51.13 bbl
 Heavy Wt. Pipe: Length: 0.00 ft Diameter: 2.70 inches Volume: 0.00 bbl
 Drill Collar: Length: 125.00 ft Diameter: 2.25 inches Volume: 0.61 bbl
Total Volume: 51.74 bbl

Drill Pipe Above KB: 6.00 ft
 Depth to Top Packer: 3784.00 ft
 Depth to Bottom Packer: ft
 Interval between Packers: 19.02 ft
 Tool Length: 39.02 ft
 Number of Packers: 2 Diameter: 6.75 inches

Tool Comments:

Tool Weight: 2500.00 lb
 Weight set on Packer: 20000.00 lb
 Weight to Pull Loose: 45000.00 lb
 Tool Chased 0.00 ft
 String Weight: Initial 40000.00 lb
 Final 42000.00 lb

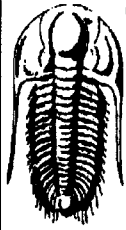
KCC

JAN 03 2002

CONFIDENTIAL

Tool Description	Length (ft)	Serial No.	Position	Depth (ft)	Accum. Lengths
C.O. Sub	1.00			3765.00	
S.I. Tool	5.00			3770.00	
HMV	5.00			3775.00	
Packer	4.00			3779.00	20.00 Bottom Of Top Packer
Packer	5.00			3784.00	
Stubb	1.00			3785.00	
Recorder	0.01	3017	Inside	3785.01	
Perforations	15.00			3800.01	
Recorder	0.01	13308	Outside	3800.02	
Bullnose	3.00			3803.02	19.02 Bottom Packers & Anchor
Total Tool Length:	39.02				

99903



**TRILOBITE
TESTING, INC.**

DRILL STEM TEST REPORT

FLUID SUMMARY

Imperial American Oil Corp.

Diane #21-2

303 N.Carroll Blvd.#214
Denton, TX 76201

21-11s-20w

Job Ticket: 15577

DST#: 6

ATTN: Hal Porter

Test Start: 2001.11.27 @ 13:10:02

Mud and Cushion Information

Mud Type: Gel Chem

Cushion Type:

Oil API:

25 deg API

Mud Weight: 10.00 lb/gal

Cushion Length:

ft

Water Salinity:

ppm

Viscosity: 61.00 sec/qt

Cushion Volume:

bbbl

Water Loss: 10.78 in³

Gas Cushion Type:

Resistivity: ohm.m

Gas Cushion Pressure:

psig

Salinity: ppm

Filter Cake: inches

Recovery Information

Recovery Table

Length ft	Description	Volume bbl
1020.00	SL.G-C-Oil	13.169

Total Length: 1020.00 ft

Total Volume: 13.169 bbl

Num Fluid Samples: 0

Num Gas Bombs: 0

Serial #:

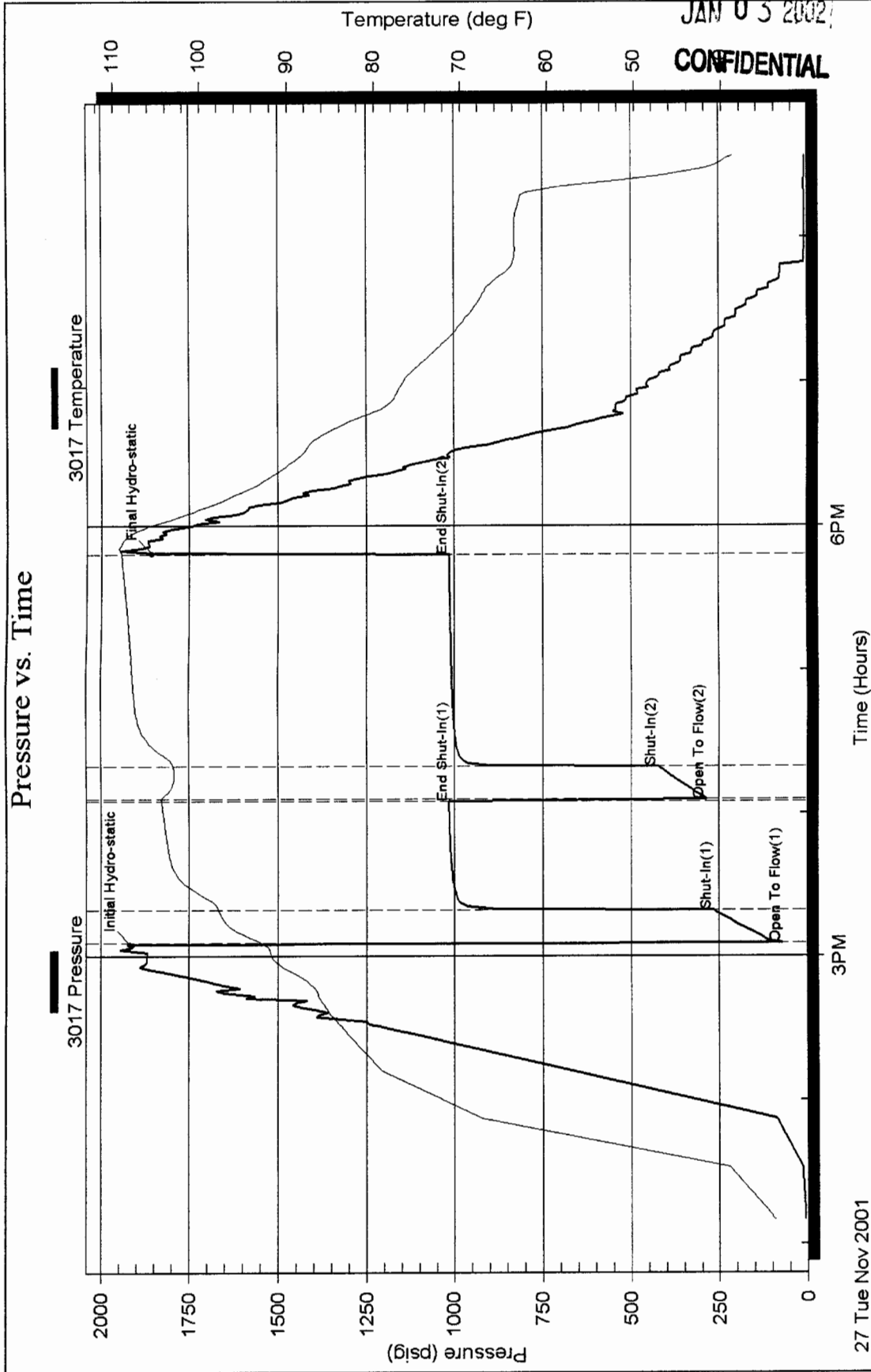
Laboratory Name:

Laboratory Location:

Recovery Comments:

JAN 03 2002

CONFIDENTIAL



DST Test Number: 6

21--11s--20w

Imperial American Oil Corp.

Inside

Serial #: 3017

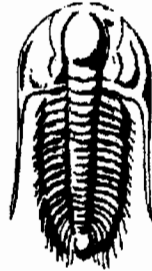
CONFIDENTIAL

RECEIVED

JAN 22 2002

ORIGINAL

KCC WICHITA



TRILOBITE
TESTING, INC.

KCC

JAN 03 2002

CONFIDENTIAL

DRILL STEM TEST REPORT

Prepared For: **Imperial American Oil Corp.**

303 N. Carroll Blvd. #214
Denton, TX 76201

ATTN: Hal Porter

21--11s--20w

Diane #21-2

Start Date: 2001.11.24 @ 07:58:17

End Date: 2001.11.24 @ 13:53:47

Job Ticket #: 15647 DST #: 1

Release

MAR 20 2003

**From
Confidential**

Trilobite Testing, Inc
PO Box 362 Hays, KS 67601
ph: 785-625-4778 fax: 785-625-5620

Imperial American Oil Corp.

Diane #21-2

21--11s--20w

DST # 1

L-Kc-C&D

2001.11.24

91793



TRILOBITE TESTING, INC.

DRILL STEM TEST REPORT

Imperial American Oil Corp.

Diane #21-2

303 N.Carroll Blvd.#214
Denton, TX 76201

21-11s-20w

Job Ticket: 15647

DST#: 1

ATTN: Hal Porter

Test Start: 2001.11.24 @ 07:58:17

JAN 2002

GENERAL INFORMATION:

Formation: **L-Kc-C&D**

Deviated: No Whipstock: ft (KB)

Time Tool Opened: 09:54:47

Time Test Ended: 13:53:47

Test Type: Conventional Bottom Hole

Tester: John Schmidt

Unit No: 18

Interval: **3467.00 ft (KB) To 3518.00 ft (KB) (TVD)**

Reference Elevations: 2149.00 ft (KB)

Total Depth: 3518.00 ft (KB) (TVD)

2144.00 ft (CF)

Hole Diameter: 7.88 inches Hole Condition: Fair

KB to GR/CF: 5.00 ft

Serial #: 3017

Inside

Press@RunDepth: 30.00 psig @ 3470.01 ft (KB)

Capacity: 7000.00 psig

Start Date: 2001.11.24

End Date:

2001.11.24

Last Calib.:

2001.11.24

Start Time: 07:58:18

End Time:

13:53:47

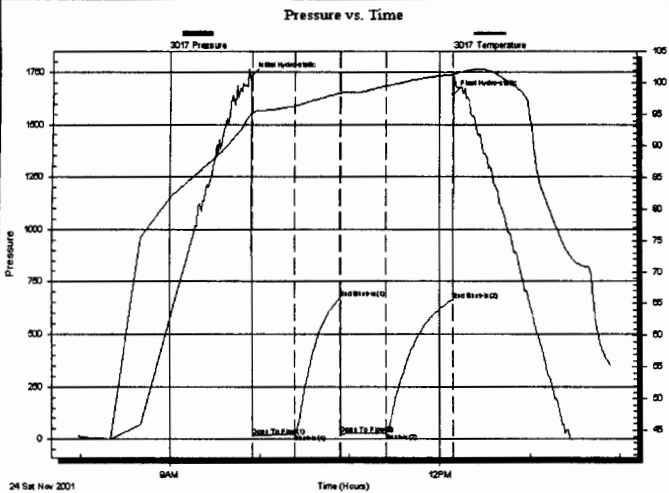
Time On Btm:

2001.11.24 @ 09:54:17

Time Off Btm:

2001.11.24 @ 12:09:17

TEST COMMENT: IF-Weak blow dead in 25 min. ISI no blow
FF- Dead FSI no blow



PRESSURE SUMMARY

Time (Min.)	Pressure (psig)	Temp (deg F)	Annotation
0	1730.71	95.05	Initial Hydro-static
1	15.68	95.20	Open To Flow (1)
29	24.07	96.37	Shut-In (1)
59	667.97	98.36	End Shut-In (1)
60	25.29	98.43	Open To Flow (2)
90	30.00	99.50	Shut-In (2)
135	662.62	101.31	End Shut-In (2)
135	1644.45	101.44	Final Hydro-static

Recovery

Length (ft)	Description	Volume (bbl)
10.00	Mud with few oil specks.	0.05

Gas Rates

Choke (inches)	Pressure (psig)	Gas Rate (Mcf/d)

CONFIDENTIAL

ORIGINAL



**TRILOBITE
TESTING, INC**

DRILL STEM TEST REPORT

TOOL DIAGRAM

Imperial American Oil Corp.

Diane #21-2

303 N.Carroll Blvd.#214
Denton, TX 76201

21-11s-20w

ATTN: Hal Porter

Job Ticket: 15647

DST#: 1

Test Start: 2001.11.24 @ 07:58:17

Tool Information

Drill Pipe:	Length: 3332.00 ft	Diameter: 3.80 inches	Volume: 46.74 bbl	Tool Weight: 3000.00 lb
Heavy Wt. Pipe:	Length: 0.00 ft	Diameter: 2.70 inches	Volume: 0.00 bbl	Weight set on Packer: 20000.00 lb
Drill Collar:	Length: 125.00 ft	Diameter: 2.25 inches	Volume: 0.61 bbl	Weight to Pull Loose: 40000.00 lb
		<u>Total Volume: 47.35 bbl</u>		Tool Chased 0.00 ft
Drill Pipe Above KB:	10.00 ft			String Weight: Initial 38000.00 lb
Depth to Top Packer:	3467.00 ft			Final 38000.00 lb
Depth to Bottom Packer:	ft			
Interval between Packers:	51.02 ft			
Tool Length:	71.02 ft			
Number of Packers:	2	Diameter: 6.75 inches		
Tool Comments:				

KCC

JAN 03 2002

CONFIDENTIAL

Tool Description	Length (ft)	Serial No.	Position	Depth (ft)	Accum. Lengths
C.O. Sub	1.00			3448.00	
S.I. Tool	5.00			3453.00	
HMV	5.00			3458.00	
Packer	4.00			3462.00	20.00 Bottom Of Top Packer
Packer	5.00			3467.00	
Stubb	1.00			3468.00	
Perforations	1.00			3469.00	
C.O. Sub	1.00			3470.00	
Recorder	0.01	3017	Inside	3470.01	
Blank Spacing	31.00			3501.01	
C.O. Sub	1.00			3502.01	
Perforations	13.00			3515.01	
Recorder	0.01	13308	Outside	3515.02	
Bullnose	3.00			3518.02	51.02 Bottom Packers & Anchor

Total Tool Length: 71.02

99903



**TRILOBITE
TESTING, INC.**

DRILL STEM TEST REPORT

FLUID SUMMARY

Imperial American Oil Corp.

Diane #21-2

303 N.Carroll Blvd.#214
Denton, TX 76201

21-11s-20w

Job Ticket: 15647

DST#: 1

ATTN: Hal Porter

Test Start: 2001.11.24 @ 07:58:17

Mud and Cushion Information

Mud Type: Gel Chem	Cushion Type:	Oil API:	deg API
Mud Weight: 9.00 lb/gal	Cushion Length: ft	Water Salinity:	ppm
Viscosity: 45.00 sec/qt	Cushion Volume: bbl		
Water Loss: 8.15 in ³	Gas Cushion Type:		
Resistivity: ohm.m	Gas Cushion Pressure: psig		
Salinity: ppm			
Filter Cake: inches			

Recovery Information

Recovery Table

Length ft	Description	Volume bbl
10.00	Mud with few oil specks.	0.049

Total Length: 10.00 ft Total Volume: 0.049 bbl

Num Fluid Samples: 0

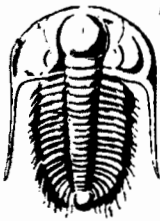
Num Gas Bombs: 0

Serial #:

Laboratory Name:

Laboratory Location:

Recovery Comments:



TRILOBITE TESTING INC.

P.O. Box 362 • Hays, Kansas 67601

CONFIDENTIAL

KCC

ORIGIN.

JAN 03 2002

CONFIDENTIAL

No 15648

Test Ticket

Well Name & No. DIANE # 21-2 Test No. #2 Date 11-24-01
 Company IMPERIAL AMERICAN OIL CORP Zone Tested L-KC-F
 Address 303 N. CARROLL BLVD. #214 DENTON, TX, 76201 Elevation 2149 KB 2144 GL
 Co. Rep / Geo. RANDALL KILIAN Cont. MURFIN #8 Est. Ft. of Pay _____ Por. _____ %
 Location: Sec. 21 Twp. 11S Rge. 20W Co. ELLIS State KS
 No. of Copies _____ Distribution Sheet (Y, N) _____ Turnkey (Y, N) _____ Evaluation (Y, N) _____

Interval Tested 3516 To 3540 Initial Str Wt./Lbs. 36,000 Unseated Str Wt./Lbs. 38,000
 Anchor Length 24' Wt. Set Lbs. 20,000 Wt. Pulled Loose/Lbs. 42,000
 Top Packer Depth 3511 Tool Weight 2,500
 Bottom Packer Depth 3516 Hole Size — 7 7/8" Rubber Size — 6 3/4"
 Total Depth 3540 Wt. Pipe Run 0 Drill Collar Run 125'
 Mud Wt. 9.1 LCM 1/2 Vis. 45 WL 8.4 Drill Pipe Size 4 1/2 XH Ft. Run 3395
 Blow Description IF - FAIR B.O.B. IN 27-MIN. FSI - WEAK BLOW BACK
FF - FAIR B.O.B. IN 22-MIN. FSI - WEAK BLOW BACK

Recovery — Total Feet 335' GIP 210' Ft. in DC 125' Ft. in DP 210'
 Rec. 210' Feet Of GASSY OIL %gas _____ %oil _____ %water _____ %mud _____
 Rec. 125' Feet Of GMCO 10 %gas 60 %oil %water 30 %mud
 Rec. _____ Feet Of _____ %gas _____ %oil _____ %water _____ %mud
 Rec. _____ Feet Of _____ %gas _____ %oil _____ %water _____ %mud
 Rec. _____ Feet Of _____ %gas _____ %oil _____ %water _____ %mud
 BHT 110 °F Gravity 25 °API D@ 60 °F Corrected Gravity 25 °API
 RW _____ @ _____ °F Chlorides _____ ppm Recovery Chlorides 4,500 ppm System

	AK-1	Alpine	Recorder No.	T-On Location
(A) Initial Hydrostatic Mud	<u>1738</u>	PSI	<u>3017</u>	<u>19:00</u>
(B) First Initial Flow Pressure	<u>18</u>	PSI (depth)	<u>3518</u>	<u>20:32</u>
(C) First Final Flow Pressure	<u>69</u>	PSI Recorder No.	<u>13308</u>	<u>22:13</u>
(D) Initial Shut-In Pressure	<u>761</u>	PSI (depth)	<u>3537</u>	<u>01:58</u>
(E) Second Initial Flow Pressure	<u>82</u>	PSI Recorder No.		<u>03:57</u>
(F) Second Final Flow Pressure	<u>119</u>	PSI (depth)		<u>04:30</u>
(G) Final Shut-in Pressure	<u>765</u>	PSI Initial Opening	<u>30</u>	Test <u>BOTTOM HOLE</u>
(Q) Final Hydrostatic Mud	<u>1726</u>	PSI Initial Shut-in	<u>45</u>	Jars _____
		Final Flow	<u>60</u>	Safety Joint _____
		Final Shut-in	<u>90</u>	Straddle _____
				Circ. Sub _____
				Sampler _____
				Extra Packer _____
				Elec. Rec. <input checked="" type="checkbox"/>
				Mileage <u>25</u>
				Other _____

TRILOBITE TESTING INC. SHALL NOT BE LIABLE FOR DAMAGE OF ANY KIND OF THE PROPERTY OR PERSONNEL OF THE ONE FOR WHOM A TEST IS MADE, OR FOR ANY LOSS SUFFERED OR SUSTAINED, DIRECTLY OR INDIRECTLY, THROUGH THE USE OF ITS EQUIPMENT, OR ITS STATEMENTS OR OPINION CONCERNING THE RESULTS OF ANY TEST. TOOLS LOST OR DAMAGED IN THE HOLE SHALL BE PAID FOR AT COST BY THE PARTY FOR WHOM THE TEST IS MADE.

Approved By _____
Our Representative John J. Schmitt

TOTAL PRICE \$ _____

CONFIDENTIAL

KCC

JAN 03 2002

CONFIDENTIAL

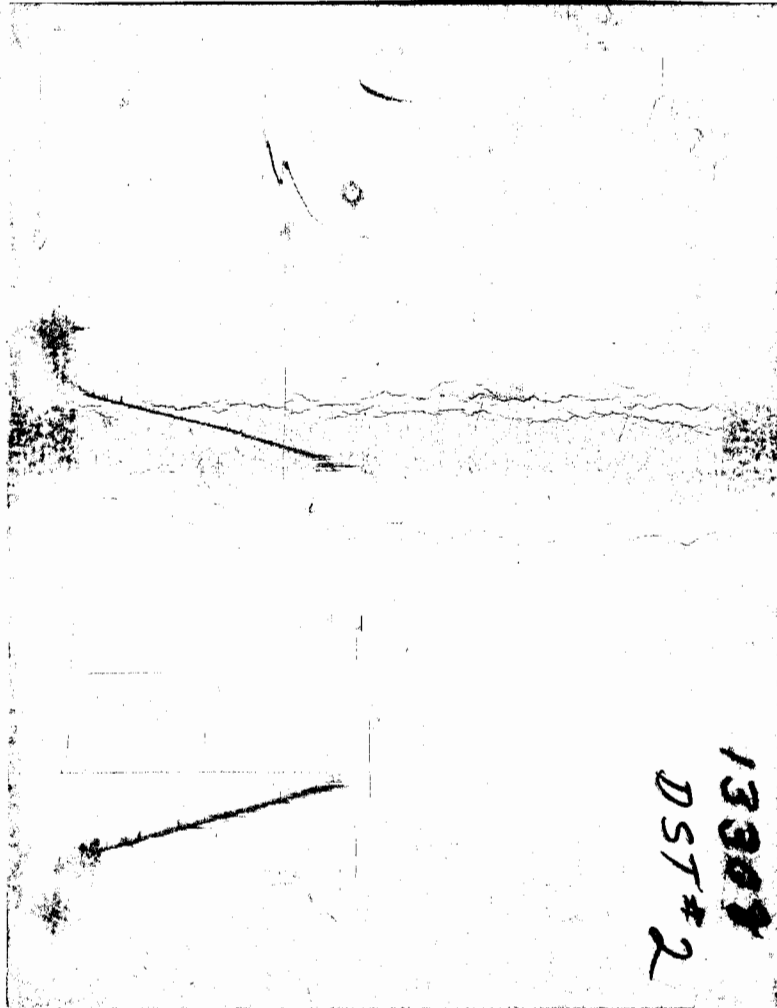
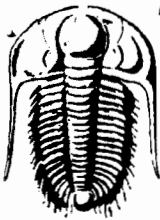


CHART PAGE
This is a photocopy of the actual AK-1 recorder chart



TRILOBITE TESTING INC.

P.O. Box 362 • Hays, Kansas 67601

CONFIDENTIAL

KCC

ORIGINAL

No 15649

JAN 05 2002

Test Ticket

CONFIDENTIAL

Well Name & No. DIANE # 21-2 Test No. # 3 Date 11-25-01
 Company IMPERIAL AMERICAN OIL CORP. Zone Tested L-KC-G
 Address 303 N. CARROLL BLVD. #214 DENVER, TX 76201 Elevation 2149 KB 2144 GL
 Co. Rep / Geo. RANDALL KILIAN Cont. MURFIN #8 Est. Ft. of Pay Por. %
 Location: Sec. 21 Twp. 11 S Rge. 20 W Co. ELLIS State KS
 No. of Copies Distribution Sheet (Y, N) Turnkey (Y, N) Evaluation (Y, N)

Interval Tested 3541 To 3555 Initial Str Wt./Lbs. 38,000 Unseated Str Wt./Lbs. 38,000
 Anchor Length 14' Wt. Set Lbs. 20,000 Wt. Pulled Loose/Lbs. 45,000
 Top Packer Depth 3536 Tool Weight 2,000
 Bottom Packer Depth 3541 Hole Size — 7/8" Rubber Size — 6 3/4"
 Total Depth 3555 Wt. Pipe Run 0 Drill Collar Run 125'
 Mud Wt. 9.3 LCM 1/4 Vis. 47 WL 9.6 Drill Pipe Size 4 1/2 XH Ft. Run 3426
 Blow Description IF-WEAK BUILT TO 5" IN ISI-WEAK BLOW BACK
FF-WEAK TO FAIR BUILT 10" IN FSI-WEAK BLOW BACK

(HAD TROUBLE SETTING SLIPS ON I.S.I.) (TOOL JT. IN TABLE)

Recovery — Total Feet	<u>190</u>	GIP	<u>90'</u>	Ft. in DC	<u>125'</u>	Ft. in DP	<u>65'</u>
Rec.	<u>110'</u>	Feet Of	<u>G M C O</u>	10 %gas	80 %oil	%water	10 %mud
Rec.	<u>80</u>	Feet Of	<u>G M O C W</u>	10 %gas	15 %oil	55 %water	20 %mud
Rec.		Feet Of		%gas	%oil	%water	%mud
Rec.		Feet Of		%gas	%oil	%water	%mud
Rec.		Feet Of		%gas	%oil	%water	%mud

BHT 110 °F Gravity °API D@ °F Corrected Gravity °API
 RW .15 @ 52 °F Chlorides 70,000 ppm Recovery Chlorides 5,000 ppm System

	AK-1	Alpine	PSI	Recorder No.	T-On Location
(A) Initial Hydrostatic Mud		<u>1760</u>		<u>3017</u>	<u>09:10</u>
(B) First Initial Flow Pressure		<u>17</u>	PSI	(depth) <u>3542</u>	T-Started <u>09:33</u>
(C) First Final Flow Pressure		<u>52</u>	PSI	Recorder No. <u>13308</u>	T-Open <u>11:05</u>
(D) Initial Shut-In Pressure		<u>737</u>	PSI	(depth) <u>3552</u>	T-Pulled <u>15:00</u>
(E) Second Initial Flow Pressure		<u>59</u>	PSI	Recorder No. <u> </u>	T-Out <u>16:37</u>
(F) Second Final Flow Pressure		<u>88</u>	PSI	(depth) <u> </u>	T-Off Location <u>17:15</u>
(G) Final Shut-in Pressure		<u>726</u>	PSI	Initial Opening <u>30</u>	Test <u>BOTTOM HOLE</u>
(Q) Final Hydrostatic Mud		<u>1722</u>	PSI	Initial Shut-in <u>55</u>	Jars <u> </u>

Final Flow 60 Safety Joint
 Final Shut-in 90 Straddle
 Circ. Sub
 Sampler
 Extra Packer
 Elec. Rec.
 Mileage 25
 Other
 TOTAL PRICE \$

TRILOBITE TESTING INC. SHALL NOT BE LIABLE FOR DAMAGE OF ANY KIND OF THE PROPERTY OR PERSONNEL OF THE ONE FOR WHOM A TEST IS MADE, OR FOR ANY LOSS SUFFERED OR SUSTAINED, DIRECTLY OR INDIRECTLY, THROUGH THE USE OF ITS EQUIPMENT, OR ITS STATEMENTS OR OPINION CONCERNING THE RESULTS OF ANY TEST. TOOLS LOST OR DAMAGED IN THE HOLE SHALL BE PAID FOR AT COST BY THE PARTY FOR WHOM THE TEST IS MADE.

Approved By
 Our Representative John J. Schmitt

CONFIDENTIAL

KCC

ORIGINAL

JAN 0 5 2002

CONFIDENTIAL

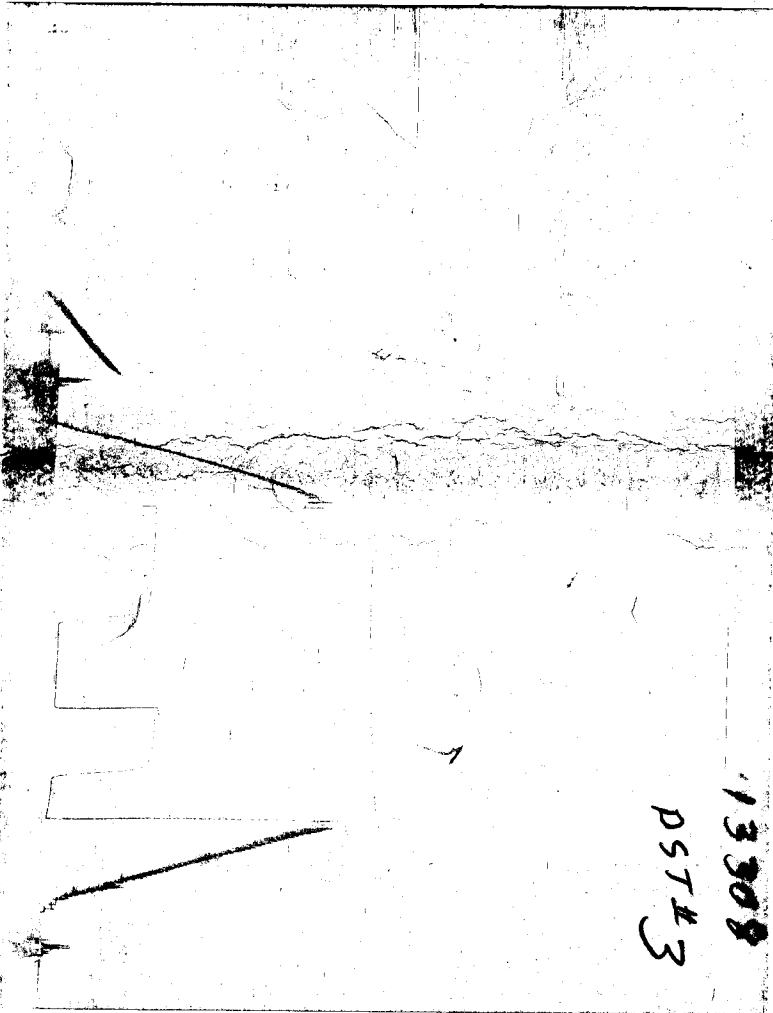
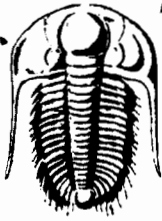


CHART PAGE
This is a photocopy of the actual AK-1 recorder chart



TRILOBITE TESTING INC.

P.O. Box 362 • Hays, Kansas 67601

CONFIDENTIAL

KCC

ORIGINAL

JAN 05 2002 No 15650

Test Ticket

CONFIDENTIAL

Well Name & No. DIANE #21-2 Test No. #4 Date 11-26-01
 Company IMPERIAL AMERICAN OIL CORP. Zone Tested L-KC-5
 Address 303 N. CARROLL BLVD. #214 DENTON, TX 76201 Elevation 2149 KB 2144 GL
 Co. Rep / Geo. RANDALL KILIAN Cont. MURFIN #8 Est. Ft. of Pay Por. %
 Location: Sec. 21 Twp. 11S Rge. 20W Co. ELLIS State KS
 No. of Copies Distribution Sheet (Y, N) Turnkey (Y, N) Evaluation (Y, N)

Interval Tested 3602 To 3640 Initial Str Wt./Lbs. 39,000 Unseated Str Wt./Lbs. 40,000
 Anchor Length 38' Wt. Set Lbs. 20,000 Wt. Pulled Loose/Lbs. 45,000
 Top Packer Depth 3597 Tool Weight 3,000
 Bottom Packer Depth 3602 Hole Size — 7 7/8" Rubber Size — 6 3/4"
 Total Depth 3640 Wt. Pipe Run 0 Drill Collar Run 125'
 Mud Wt. 9.1 LCM #1 Vis. 50 WL 9.6 Drill Pipe Size 4 1/2 XH Ft. Run 3459
 Blow Description IF - FAIR B.O.B. IN 25 MIN. FSI - WEAK BLOW BACK
FF - FAIR B.O.B. IN 27-MIN. FSI - WEAK BLOW BACK

Recovery — Total Feet 245' GIP 300' Ft. in DC 125 Ft. in DP 120
 Rec. 245 Feet Of SL M60012 5% gas 90% oil %water 5% mud
 Rec. Feet Of %gas %oil %water %mud
 Rec. Feet Of %gas %oil %water %mud
 Rec. Feet Of %gas %oil %water %mud
 Rec. Feet Of %gas %oil %water %mud
 BHT 109 °F Gravity 27 °API D@ 80 °F Corrected Gravity 25 °API
 RW @ °F Chlorides ppm Recovery Chlorides 5,000 ppm System

	AK-1	Alpine	PSI	Recorder No.	T-On Location
(A) Initial Hydrostatic Mud		<u>1789</u>		<u>3017</u>	<u>01:30</u>
(B) First Initial Flow Pressure		<u>20</u>		(depth) <u>3605</u>	T-Started <u>01:58</u>
(C) First Final Flow Pressure		<u>70</u>		Recorder No. <u>13308</u>	T-Open <u>03:33</u>
(D) Initial Shut-In Pressure		<u>1219</u>		(depth) <u>3637</u>	T-Pulled <u>07:18</u>
(E) Second Initial Flow Pressure		<u>78</u>		Recorder No. <u> </u>	T-Out <u>09:17</u>
(F) Second Final Flow Pressure		<u>110</u>		(depth) <u> </u>	T-Off Location <u>09:45</u>
(G) Final Shut-in Pressure		<u>1222</u>		Initial Opening <u>30</u>	Test <u>BOTTOM HOLE</u>
(Q) Final Hydrostatic Mud		<u>1761</u>		Initial Shut-in <u>45</u>	Jars <u> </u>
				Final Flow <u>60</u>	Safety Joint <u> </u>
				Final Shut-in <u>90</u>	Straddle <u> </u>
					Circ. Sub <u> </u>
					Sampler <u> </u>
					Extra Packer <u> </u>
					Elec. Rec. <input checked="" type="checkbox"/>
					Mileage <u>25</u>
					Other <u> </u>
					TOTAL PRICE \$ <u> </u>

TRILOBITE TESTING INC. SHALL NOT BE LIABLE FOR DAMAGE OF ANY KIND OF THE PROPERTY OR PERSONNEL OF THE ONE FOR WHOM A TEST IS MADE, OR FOR ANY LOSS SUFFERED OR SUSTAINED, DIRECTLY OR INDIRECTLY, THROUGH THE USE OF ITS EQUIPMENT, OR ITS STATEMENTS OR OPINION CONCERNING THE RESULTS OF ANY TEST. TOOLS LOST OR DAMAGED IN THE HOLE SHALL BE PAID FOR AT COST BY THE PARTY FOR WHOM THE TEST IS MADE.

Approved By Randall Kilian

Our Representative John J. Schmidt

CONFIDENTIAL

KCC

JAN 03 2002

CONFIDENTIAL

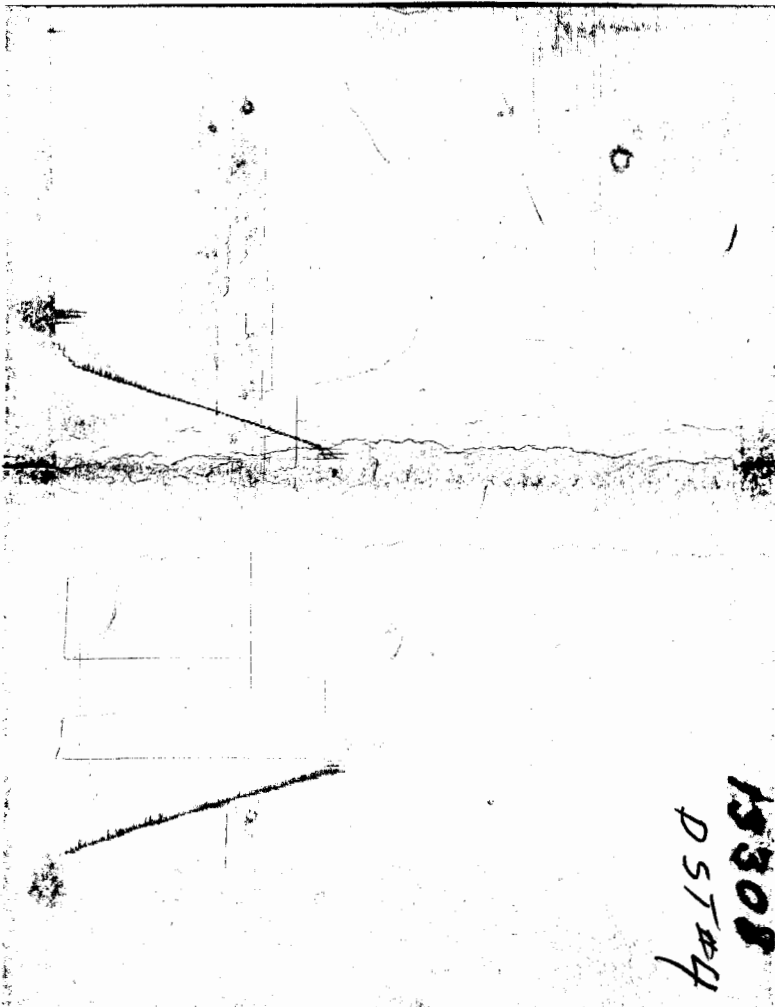
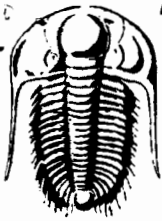


CHART PAGE
This is a photocopy of the actual AK-1 recorder chart



TRILOBITE TESTING INC.

P.O. Box 362 • Hays, Kansas 67601

CONFIDENTIAL

No 15576

Test Ticket

ORIGINAL

Well Name & No. DIANE #21-2 Test No. #5 Date 11-26-01
 Company IMPERIAL AMERICAN OIL CORP. Zone Tested ARBUCKLE
 Address 303 N. CARROLL BLVD. #214 DENTON, TX. 76201 Elevation 2149 KB 2144 GL
 Co. Rep / Geo. RANDALL KILIAN Cont. MURFIN #8 Est. Ft. of Pay _____ Por. _____ %
 Location: Sec. 21 Twp. 11S Rge. 20W Co. ELLIS State KS
 No. of Copies _____ Distribution Sheet (Y, N) _____ Turnkey (Y, N) _____ Evaluation (Y, N) _____

Interval Tested 3750 To 3785 **KCC** Initial Str Wt./Lbs. 39,000 Unseated Str Wt./Lbs. 45,000
 Anchor Length 35' **CONFIDENTIAL** Wt. Set Lbs. 20,000 Wt. Pulled Loose/Lbs. 48,000
 Top Packer Depth 3745 Tool Weight 3,000
 Bottom Packer Depth 3750 Hole Size — 7 7/8" Rubber Size — 6 3/4"
 Total Depth 3785 Wt. Pipe Run 0 Drill Collar Run 125
 Mud Wt. 9.5 LCM 1/2 Vis. 45 WL 9.2 Drill Pipe Size 4 1/2 XH Ft. Run 3613
 Blow Description FF-STRONG B.O.B. 1-MIN FSI NO BLOW
FF STRONG B.O.B. 1-MIN FSI NO BLOW

Recovery — Total Feet	GIP	Ft. in DC	Ft. in DP
<u>2175'</u>	<u>—</u>	<u>125</u>	<u>2050</u>
Rec. <u>2175</u> Feet Of <u>SL, G, CUT OIL</u>	%gas	%oil	%water %mud
Rec. _____ Feet Of _____	%gas	%oil	%water %mud
Rec. _____ Feet Of _____	%gas	%oil	%water %mud
Rec. _____ Feet Of _____	%gas	%oil	%water %mud
Rec. _____ Feet Of _____	%gas	%oil	%water %mud

BHT 120 °F Gravity 26 °API D@ 60 °F Corrected Gravity 26 °API
 RW _____ @ _____ °F Chlorides _____ ppm Recovery Chlorides 5,000 ppm System

	AK-1	Alpine	PSI	Recorder No.	T-On Location
(A) Initial Hydrostatic Mud		<u>1927</u>		<u>3017</u>	<u>21:00</u>
(B) First Initial Flow Pressure		<u>376</u>		(depth) <u>3753</u>	T-Started <u>21:50</u>
(C) First Final Flow Pressure		<u>693</u>		Recorder No. <u>13308</u>	T-Open <u>23:48</u>
(D) Initial Shut-In Pressure		<u>992</u>		(depth) <u>3782</u>	T-Pulled <u>01:48</u>
(E) Second Initial Flow Pressure		<u>727</u>		Recorder No. _____	T-Out <u>05:12</u>
(F) Second Final Flow Pressure		<u>902</u>		(depth) _____	T-Off Location <u>06:30</u>
(G) Final Shut-in Pressure		<u>992</u>		PSI Initial Opening <u>15</u>	Test <u>BOTTOM HOLE</u>
(Q) Final Hydrostatic Mud		<u>1851</u>		PSI Initial Shut-in <u>30</u>	Jars _____
				Final Flow <u>15</u>	Safety Joint _____
				Final Shut-in <u>60</u>	Straddle _____

TRILOBITE TESTING INC. SHALL NOT BE LIABLE FOR DAMAGE OF ANY KIND OF THE PROPERTY OR PERSONNEL OF THE ONE FOR WHOM A TEST IS MADE, OR FOR ANY LOSS SUFFERED OR SUSTAINED, DIRECTLY OR INDIRECTLY, THROUGH THE USE OF ITS EQUIPMENT, OR ITS STATEMENTS OR OPINION CONCERNING THE RESULTS OF ANY TEST. TOOLS LOST OR DAMAGED IN THE HOLE SHALL BE PAID FOR AT COST BY THE PARTY FOR WHOM THE TEST IS MADE.

Approved By _____
 Our Representative John J. Schmidt

Circ. Sub
 Sampler _____
 Extra Packer _____
 Elec. Rec.
 Mileage 25
 Other _____
 TOTAL PRICE \$ _____

CONFIDENTIAL

KCC

JAN 0 5 2002

CONFIDENTIAL

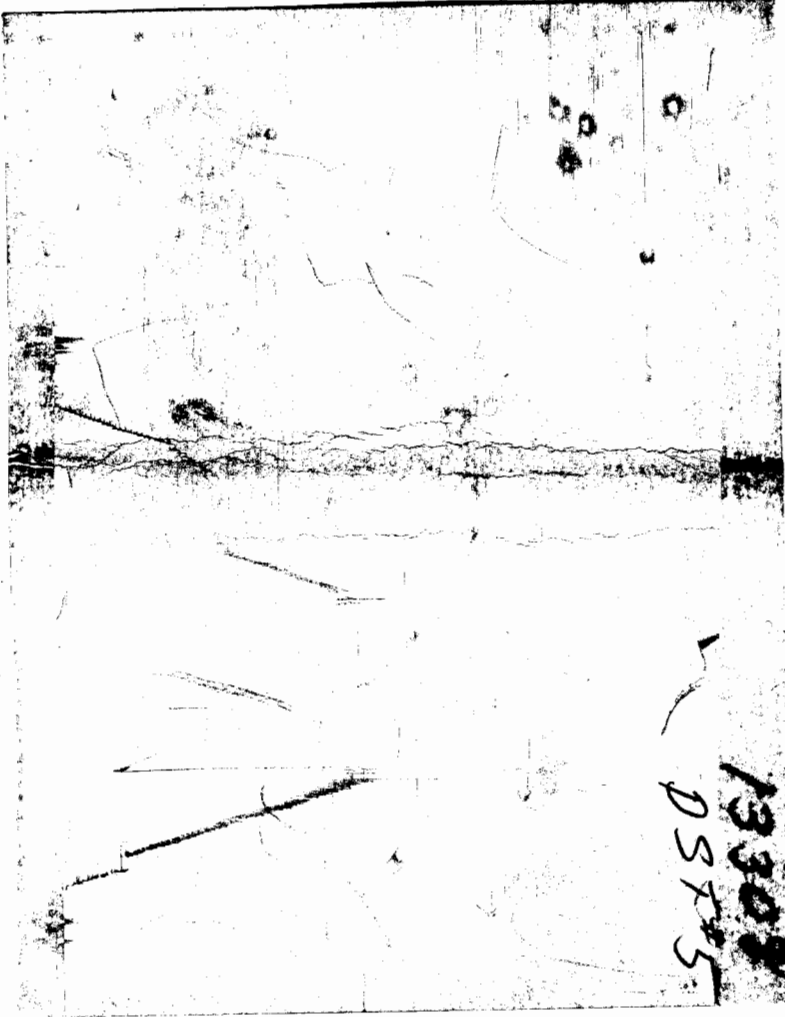
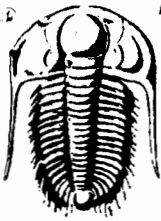


CHART PAGE
This is a photocopy of the actual AK-1 recorder chart



TRILOBITE TESTING INC.

P.O. Box 362 • Hays, Kansas 67601

CONFIDENTIAL

No 15577

Test Ticket

ORIGINAL

Well Name & No. DIANE #21-2 Test No. #6 Date 11-27-01
 Company IMPERIAL AMERICAN OIL CORP. Zone Tested ARBUCKLE
 Address 303 N. CARROLL BLVD. #214 DENTON, TX, 76201 Elevation 2149 KB 2144 GL
 Co. Rep / Geo. RANDALL KILIAN Cont. MURFIN #8 Est. Ft. of Pay _____ Por. _____ %
 Location: Sec. 21 Twp. 11S Rge. 20W Co. ELLIS State KS
 No. of Copies _____ Distribution Sheet (Y, N) _____ Turnkey (Y, N) _____ Evaluation (Y, N) _____

Interval Tested 3784 to 3803 **KCC** Initial Str Wt./Lbs. 40,000 Unseated Str Wt./Lbs. 42,000
 Anchor Length 19' Wt. Set Lbs. 20,000 Wt. Pulled Loose/Lbs. 45,000
 Top Packer Depth 3779 **JAN 03 2002** Tool Weight 2,500
 Bottom Packer Depth 3784 Hole Size — 7 7/8" Rubber Size — 6 3/4"
 Total Depth 3803 **CONFIDENTIAL** Wt. Pipe Run 0 Drill Collar Run 125'
 Mud Wt. 9.6 LCM #1 Vis. 61 WL 10.8 Drill Pipe Size 4 1/2 XH Ft. Run 3645
 Blow Description IF-STRONG B.O.B. IN 2 MIN. FSI-WEAK BLOW BACK
F.F-STRONG B.O.B. IN 2-MIN. FSI-NO BLOW BACK

Recovery — Total Feet 1020 GIP _____ Ft. in DC 125 Ft. in DP 895
 Rec. 1020 Feet Of SL, G-C-OIL %gas _____ %oil _____ %water _____ %mud _____
 Rec. _____ Feet Of _____ %gas _____ %oil _____ %water _____ %mud _____
 Rec. _____ Feet Of _____ %gas _____ %oil _____ %water _____ %mud _____
 Rec. _____ Feet Of _____ %gas _____ %oil _____ %water _____ %mud _____
 Rec. _____ Feet Of _____ %gas _____ %oil _____ %water _____ %mud _____
 BHT 109 °F Gravity 25 °API D@ 60 °F Corrected Gravity 25 °API
 RW _____ @ _____ °F Chlorides _____ ppm Recovery Chlorides _____ ppm System

	AK-1	Alpine	Recorder No.	T-On Location
(A) Initial Hydrostatic Mud		<u>1946</u> PSI	<u>3017</u>	<u>12:00</u>
(B) First Initial Flow Pressure		<u>71</u> PSI	(depth) <u>3785</u>	T-Started <u>13:10</u>
(C) First Final Flow Pressure		<u>266</u> PSI	Recorder No. <u>13308</u>	T-Open <u>15:00</u>
(D) Initial Shut-in Pressure		<u>1013</u> PSI	(depth) <u>3800</u>	T-Pulled <u>17:45</u>
(E) Second Initial Flow Pressure		<u>286</u> PSI	Recorder No. _____	T-Out <u>20:33</u>
(F) Second Final Flow Pressure		<u>422</u> PSI	(depth) _____	T-Off Location <u>21:45</u>
(G) Final Shut-in Pressure		<u>1012</u> PSI	Initial Opening <u>15</u>	Test <u>BOTTOM HOLE</u>
(Q) Final Hydrostatic Mud		<u>1857</u> PSI	Initial Shut-in <u>45</u>	Jars _____
			Final Flow <u>15</u>	Safety Joint _____
			Final Shut-in <u>90</u>	Straddle _____

TRILOBITE TESTING INC. SHALL NOT BE LIABLE FOR DAMAGE OF ANY KIND OF THE PROPERTY OR PERSONNEL OF THE ONE FOR WHOM A TEST IS MADE, OR FOR ANY LOSS SUFFERED OR SUSTAINED, DIRECTLY OR INDIRECTLY, THROUGH THE USE OF ITS EQUIPMENT, OR ITS STATEMENTS OR OPINION CONCERNING THE RESULTS OF ANY TEST. TOOLS LOST OR DAMAGED IN THE HOLE SHALL BE PAID FOR AT COST BY THE PARTY FOR WHOM THE TEST IS MADE.

Approved By Randall Kilian

Our Representative John J. Schmidt

Other _____
 TOTAL PRICE \$ _____

CONFIDENTIAL

KCC

JAN 03 2002

CONFIDENTIAL

CHART PAGE

This is a photocopy of the actual AK-1 recorder chart

