

DRILL STEM TEST REPORT

Prepared For: **Dreiling Oil Inc**

PO Box 550
Hays KS 67601

ATTN: Roger Fisher

35 11 22W Trego KS

Windholz Unit 1-35

Start Date: 2006.04.30 @ 00:14:39

End Date: 2006.04.30 @ 05:35:39

Job Ticket #: 24157 DST #: 1

Trilobite Testing, Inc

PO Box 362 Hays, KS 67601

ph: 785-625-4778 fax: 785-625-5620

Dreiling Oil Inc

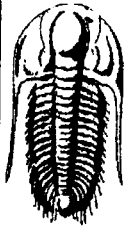
Windholz Unit 1-35

35 11 22W Trego KS

DST # 1

LJKc

2006.04.30



**TRILOBITE
TESTING, INC**

DRILL STEM TEST REPORT

Drilling Oil Inc

PO Box 550
Hays KS 67601

ATTN: Roger Fisher

Windholz Unit 1-35

35 11 22W Trego KS

Job Ticket: 24157

DST#: 1

Test Start: 2006.04.30 @ 00:14:39

GENERAL INFORMATION:

Formation: L,Kc

Deviated: No Whipstock: ft (KB)

Time Tool Opened: 01:43:54

Time Test Ended: 05:35:39

Test Type: Conventional Bottom Hole

Tester: Joe

Unit No: 22

Interval: 3662.00 ft (KB) To 3728.00 ft (KB) (TVD)

Total Depth: 3729.00 ft (KB) (TVD)

Hole Diameter: 7.80 inches Hole Condition: Good

Reference Elevations: 2365.00 ft (KB)

2360.00 ft (CF)

KB to GR/CF: 5.00 ft

Serial #: 6756 Inside

Press@RunDepth: 90.29 psig @ 3663.00 ft (KB)

Start Date: 2006.04.30

End Date:

2006.04.30

Start Time: 00:14:41

End Time:

05:35:39

Capacity: 7000.00 psig

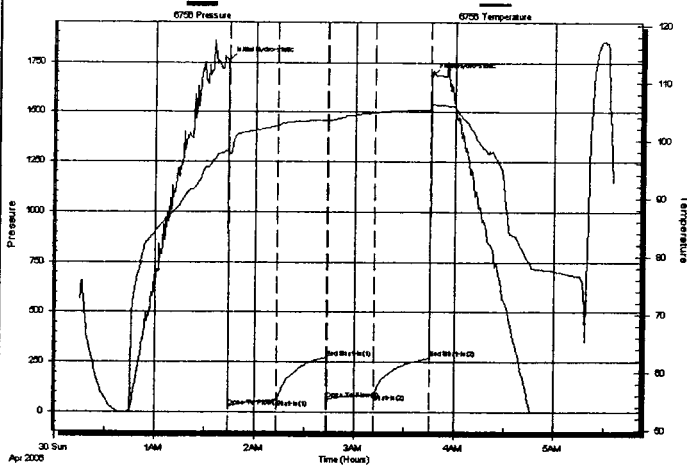
Last Calib.: 2006.04.30

Time On Btm: 2006.04.30 @ 01:43:39

Time Off Btm: 2006.04.30 @ 03:45:39

TEST COMMENT: IF Strong Blow off BOB in 5 min
ISI Weak surf Blow back died after 20"
FF Good Blow off BOB in 7"
FSI Weak Surf Blow back

Pressure vs. Time



PRESSURE SUMMARY

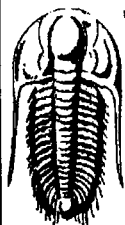
Time (Min.)	Pressure (psig)	Temp (deg F)	Annotation
0	1758.56	98.15	Initial Hydro-static
1	26.32	97.49	Open To Flow (1)
30	62.79	102.54	Shut-In(1)
60	272.82	103.50	End Shut-In(1)
60	62.07	103.42	Open To Flow (2)
89	90.29	104.78	Shut-In(2)
122	268.27	105.38	End Shut-In(2)
122	1681.32	105.98	Final Hydro-static

Recovery

Length (ft)	Description	Volume (bbl)
174.00	GOCM 10%G 10%O 80%M	2.44

Gas Rates

Choke (inches)	Pressure (psig)	Gas Rate (Mcf/d)



**TRILOBITE
TESTING, INC.**

DRILL STEM TEST REPORT

TOOL DIAGRAM

Dreiling Oil Inc

Windholz Unit 1-35

PO Box 550
Hays KS 67601

35 11 22W Trego KS

Job Ticket: 24157

DST#: 1

ATTN: Roger Fisher

Test Start: 2006.04.30 @ 00:14:39

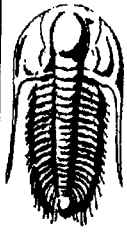
Tool Information

Drill Pipe:	Length: 3654.00 ft	Diameter: 3.80 inches	Volume: 51.26 bbl	Tool Weight: 2000.00 lb
Heavy Wt. Pipe:	Length: 0.00 ft	Diameter: 2.25 inches	Volume: 0.00 bbl	Weight set on Packer: 30000.00 lb
Drill Collar:	Length: 0.00 ft	Diameter: 2.25 inches	Volume: 0.00 bbl	Weight to Pull Loose: 45000.00 lb
			<u>Total Volume: 51.26 bbl</u>	Tool Chased 0.00 ft
Drill Pipe Above KB:	12.00 ft			String Weight: Initial 40000.00 lb
Depth to Top Packer:	3662.00 ft			Final 42000.00 lb
Depth to Bottom Packer:	ft			
Interval between Packers:	66.00 ft			
Tool Length:	86.00 ft			
Number of Packers:	2	Diameter: 6.75 inches		

Tool Comments:

Tool Description	Length (ft)	Serial No.	Position	Depth (ft)	Accum. Lengths
Shut In Tool	5.00			3647.00	
Hydraulic tool	5.00			3652.00	
Packer	5.00			3657.00	20.00 Bottom Of Top Packer
Packer	5.00			3662.00	
Stubb	1.00			3663.00	
Recorder	0.00	6756	Inside	3663.00	
Change Over Sub	1.00			3664.00	
Blank Spacing	31.00			3695.00	
Change Over Sub	1.00			3696.00	
Perforations	29.00			3725.00	
Recorder	0.00	11020	Inside	3725.00	
Bullnose	3.00			3728.00	66.00 Bottom Packers & Anchor

Total Tool Length: 86.00



**TRILOBITE
TESTING, INC**

DRILL STEM TEST REPORT

FLUID SUMMARY

Drilling Oil Inc

Windholz Unit 1-35

PO Box 550
Hays KS 67601

35 11 22W Trego KS

Job Ticket: 24157

DST#: 1

ATTN: Roger Fisher

Test Start: 2006.04.30 @ 00:14:39

Mud and Cushion Information

Mud Type: Gel Chem

Cushion Type:

Oil API:

deg API

Mud Weight: 9.00 lb/gal

Cushion Length:

ft

Water Salinity:

ppm

Viscosity: 49.00 sec/qt

Cushion Volume:

bbl

Water Loss: 8.78 in³

Gas Cushion Type:

Resistivity: ohm.m

Gas Cushion Pressure:

psig

Salinity: ppm

Filter Cake: inches

Recovery Information

Recovery Table

Length ft	Description	Volume bbl
174.00	GOCM 10%G 10%O 80%M	2.441

Total Length: 174.00 ft Total Volume: 2.441 bbl

Num Fluid Samples: 0

Num Gas Bombs: 0

Serial #:

Laboratory Name:

Laboratory Location:

Recovery Comments:

Serial #: 6756

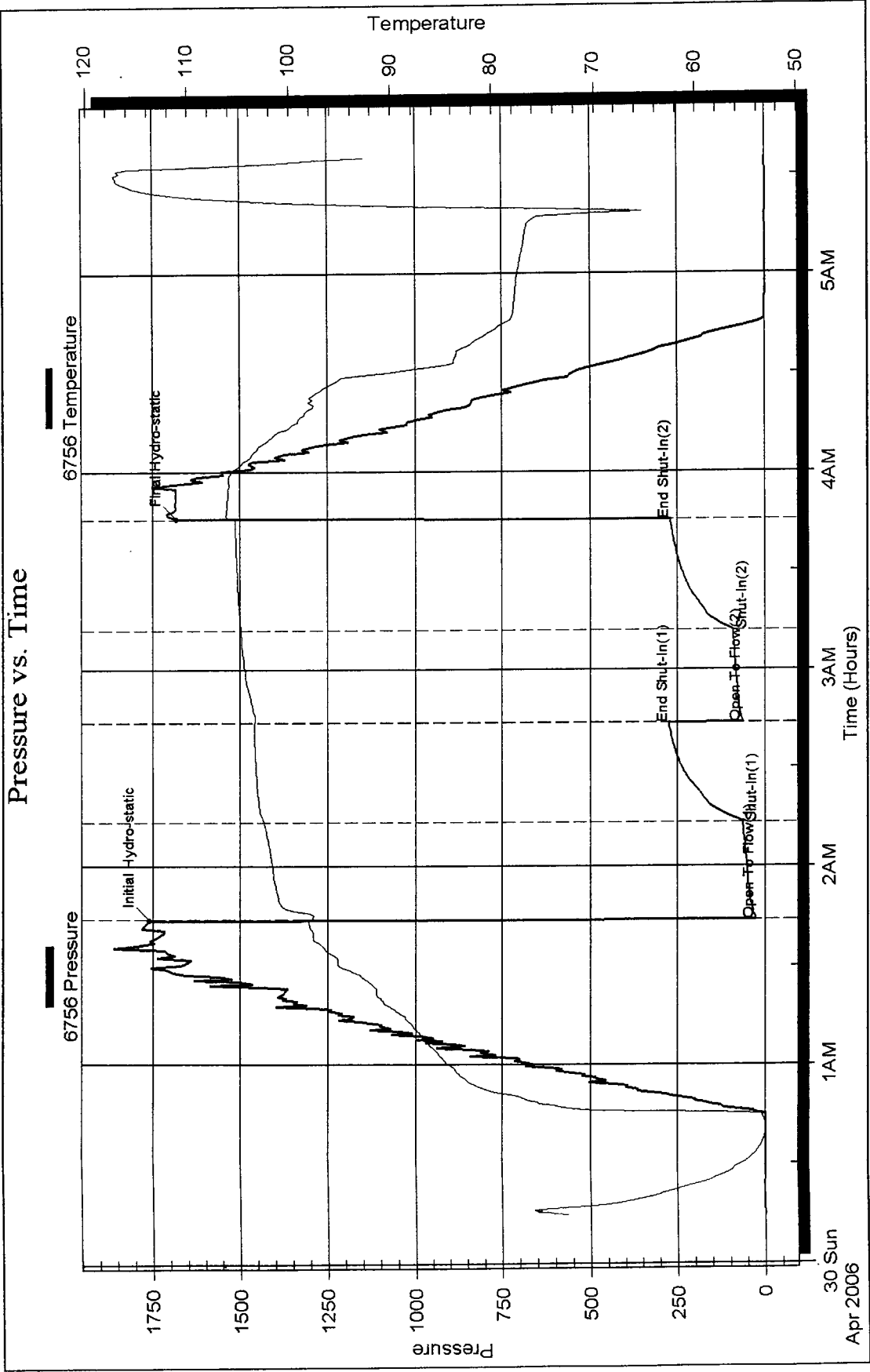
Inside

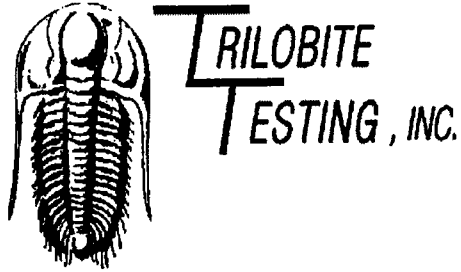
Drilling Oil Inc

35 11 22W Trego KS

DST Test Number: 1

Pressure vs. Time





DRILL STEM TEST REPORT

Prepared For: **Dreiling Oil Inc**

PO Box 550
Hays KS 67601

ATTN: Roger Fisher

35 11 22W Trego KS

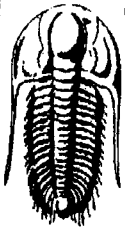
Windholz Unit 1-35

Start Date: 2006.05.01 @ 02:19:34

End Date: 2006.05.01 @ 09:03:19

Job Ticket #: 24158 DST #: 2

Trilobite Testing, Inc
PO Box 362 Hays, KS 67601
ph: 785-625-4778 fax: 785-625-5620



**TRILOBITE
TESTING, INC.**

DRILL STEM TEST REPORT

Drilling Oil Inc

Windholz Unit 1-35

PO Box 550
Hays KS 67601

35 11 22W Trego KS

ATTN: Roger Fisher

Job Ticket: 24158 **DST#: 2**

Test Start: 2006.05.01 @ 02:19:34

GENERAL INFORMATION:

Formation: **marmaton**

Deviated: No Whipstock: ft (KB)

Time Tool Opened: 04:16:04

Time Test Ended: 09:03:19

Test Type: Conventional Bottom Hole

Tester: Joe

Unit No: 22

Interval: **3969.00 ft (KB) To 4000.00 ft (KB) (TVD)**

Total Depth: 3729.00 ft (KB) (TVD)

Hole Diameter: 7.80 inches Hole Condition: Good

Reference Elevations: 2365.00 ft (KB)

2360.00 ft (CF)

KB to GR/CF: 5.00 ft

Serial #: 6756 Inside

Press@RunDepth: 15.48 psig @ 3970.00 ft (KB)

Start Date: 2006.05.01

End Date:

2006.05.01

Capacity: 7000.00 psig

Last Calib.: 2006.05.01

Start Time: 02:19:36

End Time:

09:03:19

Time On Btm: 2006.05.01 @ 04:15:49

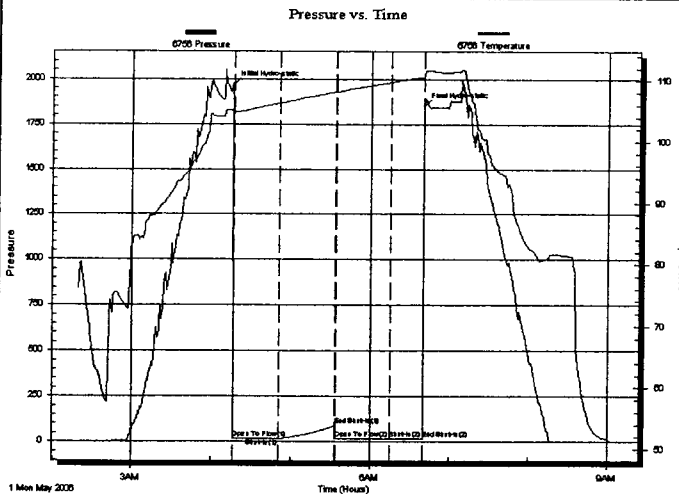
Time Off Btm: 2006.05.01 @ 06:40:19

TEST COMMENT: IF Weak Surf Blow died after 20"

ISI Dead

FF Dead

FSI Dead



PRESSURE SUMMARY

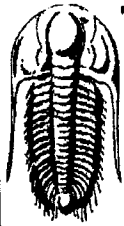
Time (Min.)	Pressure (psig)	Temp (deg F)	Annotation
0	1967.52	105.26	Initial Hydro-static
1	17.14	104.85	Open To Flow (1)
35	15.65	106.31	Shut-in(1)
78	89.73	108.18	End Shut-in(1)
79	15.55	108.19	Open To Flow (2)
120	15.48	109.75	Shut-in(2)
145	15.44	110.58	End Shut-in(2)
145	1849.63	111.08	Final Hydro-static

Recovery

Length (ft)	Description	Volume (bbl)
2.00	OSPKDDM 1%O 99%M	0.03

Gas Rates

Choke (inches)	Pressure (psig)	Gas Rate (Mcf/d)



**TRILOBITE
TESTING, INC.**

DRILL STEM TEST REPORT

TOOL DIAGRAM

Dreiling Oil Inc
PO Box 550
Hays KS 67601
ATTN: Roger Fisher

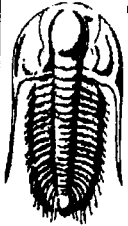
Windholz Unit 1-35
35 11 22W Trego KS
Job Ticket: 24158 **DST#: 2**
Test Start: 2006.05.01 @ 02:19:34

Tool Information

Drill Pipe:	Length: 3965.00 ft	Diameter: 3.80 inches	Volume: 55.62 bbl	Tool Weight: 2000.00 lb
Heavy Wt. Pipe:	Length: 0.00 ft	Diameter: 2.25 inches	Volume: 0.00 bbl	Weight set on Packer: 30000.00 lb
Drill Collar:	Length: 0.00 ft	Diameter: 2.25 inches	Volume: 0.00 bbl	Weight to Pull Loose: 45000.00 lb
			<u>Total Volume: 55.62 bbl</u>	Tool Chased 0.00 ft
Drill Pipe Above KB:	16.00 ft			String Weight: Initial 44000.00 lb
Depth to Top Packer:	3969.00 ft			Final 44000.00 lb
Depth to Bottom Packer:	ft			
Interval between Packers:	31.00 ft			
Tool Length:	51.00 ft			
Number of Packers:	2	Diameter: 6.75 inches		

Tool Comments:

Tool Description	Length (ft)	Serial No.	Position	Depth (ft)	Accum. Lengths
Shut In Tool	5.00			3954.00	
Hydraulic tool	5.00			3959.00	
Packer	5.00			3964.00	20.00 Bottom Of Top Packer
Packer	5.00			3969.00	
Stubb	1.00			3970.00	
Recorder	0.00	6756	Inside	3970.00	
Perforations	27.00			3997.00	
Recorder	0.00	11020	Inside	3997.00	
Bullnose	3.00			4000.00	31.00 Bottom Packers & Anchor
Total Tool Length:	51.00				



**TRILOBITE
TESTING, INC.**

DRILL STEM TEST REPORT

FLUID SUMMARY

Dreiling Oil Inc

Windholz Unit 1-35

PO Box 550
Hays KS 67601

35 11 22W Trego KS

Job Ticket: 24158

DST#: 2

ATTN: Roger Fisher

Test Start: 2006.05.01 @ 02:19:34

Mud and Cushion Information

Mud Type: Gel Chem

Cushion Type:

Oil API:

deg API

Mud Weight: 9.00 lb/gal

Cushion Length:

ft

Water Salinity:

ppm

Viscosity: 49.00 sec/qt

Cushion Volume:

bbf

Water Loss: 8.77 in³

Gas Cushion Type:

Resistivity: ohm.m

Gas Cushion Pressure:

psig

Salinity: ppm

Filter Cake: inches

Recovery Information

Recovery Table

Length ft	Description	Volume bbf
2.00	OSPKDDM 1%O 99%M	0.028

Total Length:

2.00 ft

Total Volume:

0.028 bbf

Num Fluid Samples: 0

Num Gas Bombs: 0

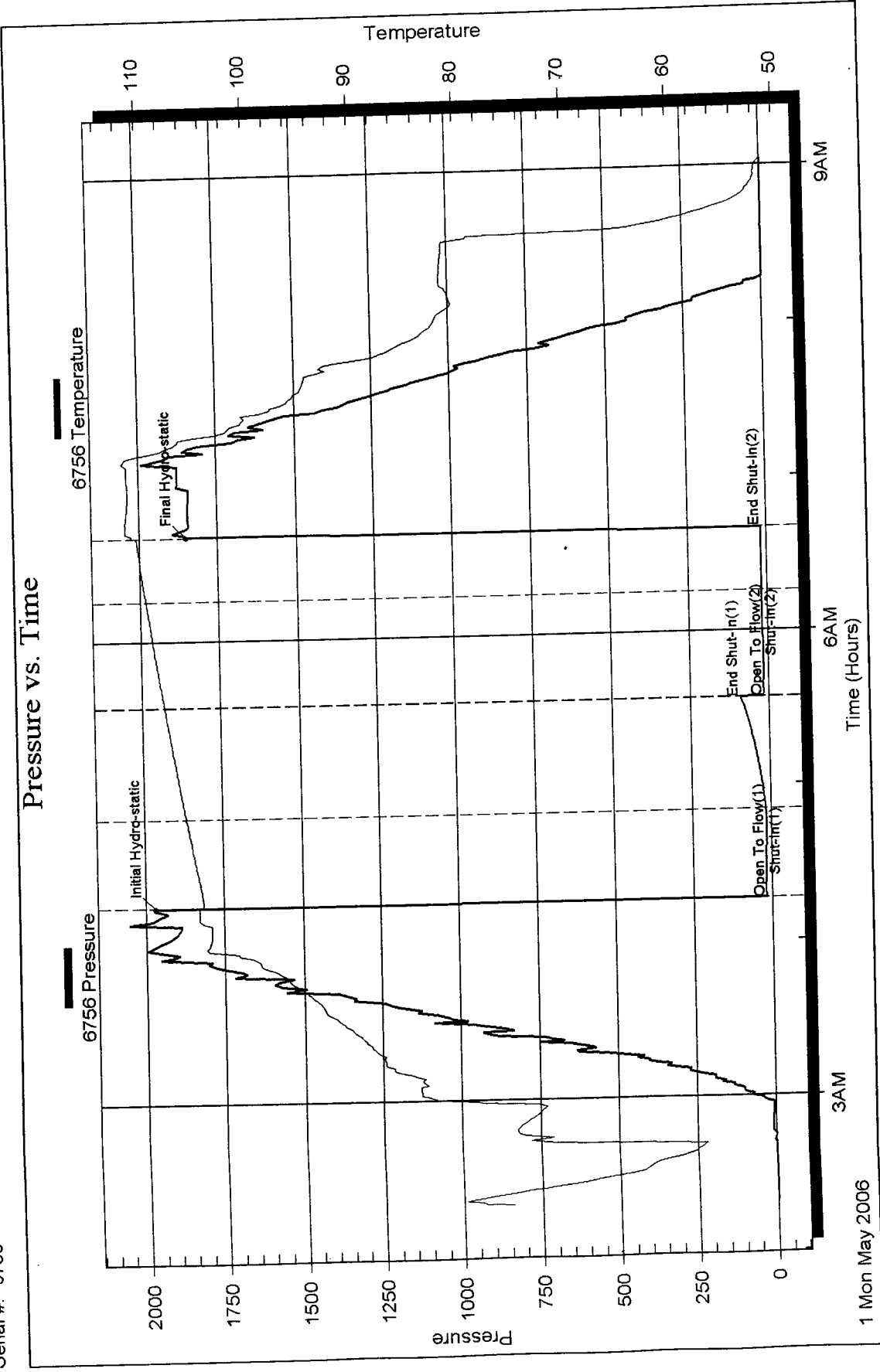
Serial #:

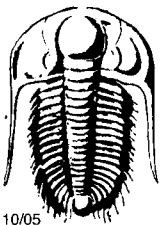
Laboratory Name:

Laboratory Location:

Recovery Comments:

Pressure vs. Time





TRILOBITE TESTING INC.

P.O. Box 362 • Hays, Kansas 67601

No 24157

Test Ticket

Well Name & No. Windholz Unit 1-35 Test No. 1 Date 4-30-06
 Company Dreiling Oil Zone Tested L Kc
 Address PO Box 550 Hays Ks 67601 Elevation 2365 KB 2360 GL
 Co. Rep / Geo. Roger Fisher Rig AA Drly
 Location: Sec. 35 Twp. 11s Rge. 22w Co. Trego State Ks
 Comment: _____ Release date / time: _____

Interval Tested 3662 - 3728 Initial Str Wt./Lbs. 40000 Unseated Str Wt./Lbs. 42000
 Anchor Length 66 Wt. Set Lbs. 30000 Wt. Pulled Loose/Lbs. 45000
 Top Packer Depth 3657 Tool Weight 2000
 Bottom Packer Depth 3662 Hole Size 7 7/8" Rubber Size 6 3/4"
 Total Depth 3728 Wt. Pipe Run _____ Drill Collar Run _____
 Mud Wt. 9 LCM Tr Vis. 49 WL 85 Drill Pipe Size 4 1/2 XH Ft. Run 3654
 Blow Description IF - Strong blow off BOB in 5 min
IST - weak surface Blowback Died after 20 min
IF - Good Blow off BOB in 7 min
FSI - Weak Surface Blowback

Recovery - Total Feet	GIP	Ft. in DC	Ft. in DP
Rec. <u>174</u>	Feet of <u>2 DCM</u>	<u>10</u> %gas	<u>10</u> %oil
Rec. _____	Feet of _____	%gas	%oil
Rec. _____	Feet of _____	%gas	%oil
Rec. _____	Feet of _____	%gas	%oil
Rec. _____	Feet of _____	%gas	%oil

BHT _____ °F Gravity _____ °API D @ _____ °F Corrected Gravity _____ °API
 RW _____ @ _____ °F Chlorides _____ ppm Recovery _____ Chlorides _____ ppm System

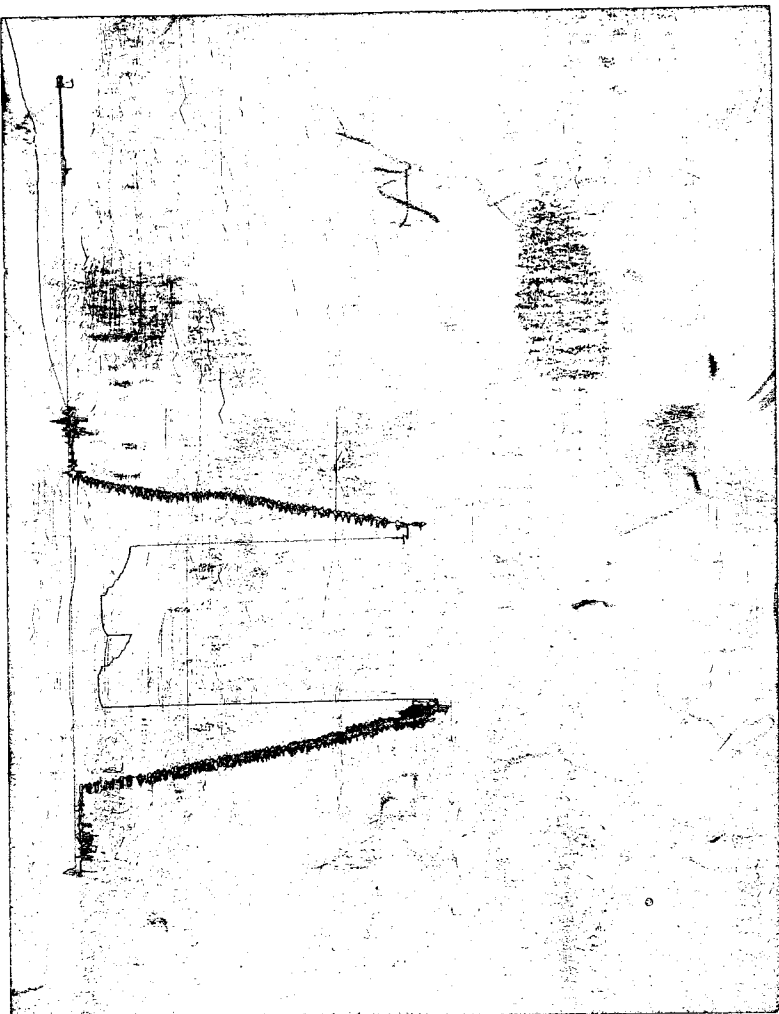
	AK-1	Alpine	Recorder No.	Test
(A) Initial Hydrostatic Mud		<u>1759</u> PSI	<u>6756</u>	<u>1000.00</u>
(B) First Initial Flow Pressure		<u>26</u> PSI	<u>3663</u>	Jars _____
(C) First Final Flow Pressure		<u>63</u> PSI	Recorder No. _____	Safety Jt. _____
(D) Initial Shut-In Pressure		<u>273</u> PSI	(depth) _____	Circ Sub _____
(E) Second Initial Flow Pressure		<u>62</u> PSI	Recorder No. <u>11020</u>	Sampler _____
(F) Second Final Flow Pressure		<u>90</u> PSI	(depth) <u>3725</u>	Straddle _____
(G) Final Shut-In Pressure		<u>268</u> PSI	Initial Opening <u>30</u>	Ext. Packer _____
(Q) Final Hydrostatic Mud		<u>1681</u> PSI	Initial Shut-In <u>30</u>	Shale Packer _____

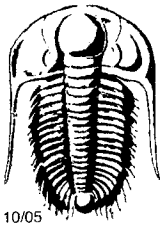
TRILOBITE TESTING INC. SHALL NOT BE LIABLE FOR DAMAGED OF ANY KIND OF THE PROPERTY OR PERSONNEL OF THE ONE FOR WHOM A TEST IS MADE, OR FOR ANY LOSS SUFFERED OR SUSTAINED, DIRECTLY OR INDIRECTLY, THROUGH THE USE OF ITS EQUIPMENT, OR ITS STATEMENTS OR OPINION CONCERNING THE RESULTS OF ANY TEST. TOOLS LOST OR DAMAGED IN THE HOLE SHALL BE PAID FOR AT COST BY THE PARTY FOR WHOM THE TEST IS MADE.

Approved By Roger Fisher
 Our Representative Joe Ramsey

Final Flow	<u>30</u>	Ruined Packer	_____
Final Shut-In	<u>30</u>	Mileage	<u>60 RT 7500</u>
T-On Location	<u>24:20</u>	Sub Total:	<u>4777.00</u>
T-Started	<u>00:13</u>	Std. By	_____
T-Open	<u>1:39</u>	Acc. Chg:	_____
T-Pulled	<u>3:39</u>	Other:	_____
T-Out	<u>5:20</u>	Total:	_____

CHART PAGE
This is a photocopy of the actual AK-1 recorder chart.





TRILOBITE TESTING INC.

No 24158

P.O. Box 362 • Hays, Kansas 67601

Test Ticket

Well Name & No. Windholz Unit 1-35 Test No. 2 Date 5-1-06
 Company Drilling Oil Zone Tested Marmaton
 Address _____ Elevation 2365 KB 2368 GL
 Co. Rep / Geo. Robert Fisher Rig AA Drilling
 Location: Sec. 35 Twp. 11S Rge. 22W Co. Trego State _____
 Comment: _____ Release date / time: _____

Interval Tested 3969-4000 Initial Str Wt./Lbs. 44000 Unseated Str Wt./Lbs. 44000
 Anchor Length 31 Wt. Set Lbs. 30000 Wt. Pulled Loose/Lbs. 45000
 Top Packer Depth 3964 Tool Weight 2000
 Bottom Packer Depth 3969 Hole Size 7 7/8" Rubber Size 6 3/4"
 Total Depth 4000 Wt. Pipe Run _____ Drill Collar Run _____
 Mud Wt. 9 LCM ~~49~~ Vis. 49 WLG. 6 Drill Pipe Size 4 1/2 X 11 Ft. Run 3965
 Blow Description F - weak surface blow Red at 15 min
ISI - Dead
F - Dead
F - Dead

Recovery - Total Feet	GIP	Ft. in DC	Ft. in DP
Rec. <u>2</u> Feet of <u>OSPK DM</u>	%gas	<u>1</u> %oil	%water <u>99</u> %mud
Rec. _____ Feet of _____	%gas	%oil	%water _____ %mud
Rec. _____ Feet of _____	%gas	%oil	%water _____ %mud
Rec. _____ Feet of _____	%gas	%oil	%water _____ %mud
Rec. _____ Feet of _____	%gas	%oil	%water _____ %mud

BHT 111 °F Gravity _____ °API D @ _____ °F Corrected Gravity _____ °API
 RW _____ @ _____ °F Chlorides _____ ppm Recovery _____ Chlorides _____ ppm System

	AK-1	Alpine	Recorder No.	Test
(A) Initial Hydrostatic Mud		<u>1968</u> PSI	<u>6756</u>	<u>1000.00</u>
(B) First Initial Flow Pressure		<u>17</u> PSI	<u>3970</u>	Jars _____
(C) First Final Flow Pressure		<u>16</u> PSI	Recorder No. _____	Safety Jt. _____
(D) Initial Shut-In Pressure		<u>90</u> PSI	(depth) _____	Circ Sub _____
(E) Second Initial Flow Pressure		<u>16</u> PSI	Recorder No. <u>11020</u>	Sampler _____
(F) Second Final Flow Pressure		<u>15</u> PSI	(depth) <u>3997</u>	Straddle _____
(G) Final Shut-In Pressure		<u>15</u> PSI	Initial Opening <u>30</u>	Ext. Packer _____
(Q) Final Hydrostatic Mud		<u>1550</u> PSI	Initial Shut-In <u>30</u>	Shale Packer _____
			Final Flow <u>30</u>	Ruined Packer _____
			Final Shut-In <u>30</u>	Mileage <u>60 RT 75.00</u>

TRILOBITE TESTING INC. SHALL NOT BE LIABLE FOR DAMAGED OF ANY KIND OF THE PROPERTY OR PERSONNEL OF THE ONE FOR WHOM A TEST IS MADE, OR FOR ANY LOSS SUFFERED OR SUSTAINED, DIRECTLY OR INDIRECTLY, THROUGH THE USE OF ITS EQUIPMENT, OR ITS STATEMENTS OR OPINION CONCERNING THE RESULTS OF ANY TEST. TOOLS LOST OR DAMAGED IN THE HOLE SHALL BE PAID FOR AT COST BY THE PARTY FOR WHOM THE TEST IS MADE.

Approved By [Signature]
 Our Representative [Signature]

T-On Location 1:00
 T-Started 2:19
 T-Open 4:10
 T-Pulled 6:10
 T-Out 8:40

Test 1000.00
 Jars _____
 Safety Jt. _____
 Circ Sub _____
 Sampler _____
 Straddle _____
 Ext. Packer _____
 Shale Packer _____
 Ruined Packer _____
 Mileage 60 RT 75.00
 Sub Total: 1000.00
 Std. By [Signature]
 Acc. Chg: _____
 Other: _____
 Total: _____

CHART PAGE

This is a photocopy of the actual AK-1 recorder chart.

