

LAUGHLIN-SIMMONS & CO. OF KANSAS, INC.

KW3208112

OIL FIELD SURVEYING
NORTH MERIDIAN, SUITE 2
WICHITA, KANSAS 67203

(316) 943-

INVOICE NO

DATE

MAR 31 1981

Handwritten notes:
Koc
K-Koc
25
orig. in Koc acct
Send copy to
Ruff
do Bill Chambers

Trego
COUNTY 26 11s 22W
 S T R

LOCATION 1 D. Hillman

OPERATOR

NO. FARM

ELEVATION: 2268G
 2273 DF

KANSAS OIL CORPORATION
555 N. WOODLAWN
WICHITA, KANSAS 67208

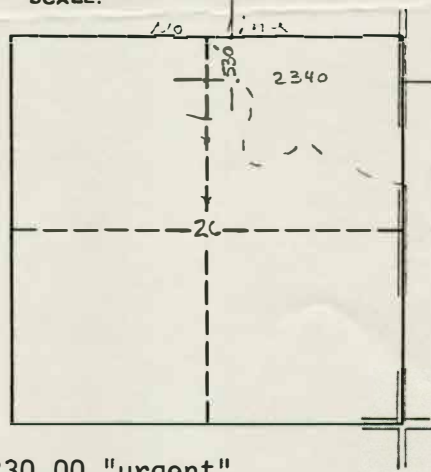
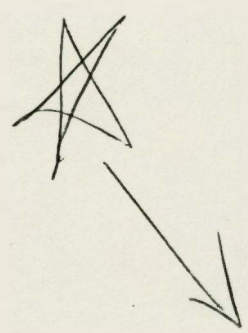


AUTHORIZED BY: Zeb Stewart

PHONE # 681-1685

SCALE: 2" = 1 mile

urgent-verify by tomorrow



Ran routine staking
procedure to verify
location - Rig up.

MINIMUM STAKING CHARGE: \$230.00 "urgent"
(INCLUDES GROUND ELEVATION)
EXTRA TIME & MILEAGE: \$700
ELEVATION CHARGE: \$300
TOTAL: \$1300

Handwritten: 2nd staking

J. Hill

L-S SURVEYOR

Notes Revised		R 22W			
15	11/1/80 11/1/80	14		13	
			2195 est		
T					
11	22	23		24	
S					
		2249 GR			
27		26		25	

COPY

Prospect 11-22-23 Contract No. 73-006 No. Points 13 Type Spot Core
 Twp. 11S Rge. 22W County Trego State Ks Logging No
 Spread: ----- - 0 - ----- Stations/Cable ----- Shots/Hole 3
 Type Recording Spot With 1-12 -----, 13-24 ----- Mix ----- Charge -----
 Energy to ----- Anh. ----- Hole Depth -----, or ----- ft in. ----- Remarks Note 2nd Revision

Date 11/7/80 GEOSEARCH, INC. Party No. ----- Assigned by: [Signature] NOV 7 1980