



WESTERN TESTING CO., INC.
FORMATION TESTING

TICKET No 7539

P. O. BOX 1599 WICHITA, KANSAS 67201
PHONE (316) 262-5861

Elevation Formation Lays Eff. Pay Ft.

District Wakeeney Date 9-18-80 Customer Order No.

COMPANY NAME Don E. Pratt Oil Operations

ADDRESS Box 370 Hays Ks 67601

LEASE AND WELL NO. Gagelman #1-10 COUNTY Trego STATE Ks Sec. 10 Twp 11S Rge 22W

Mail Invoice To Same Co. Name Address No. Copies Requested 5

Mail Charts To Same Address No. Copies Requested 5

Formation Test No. 1 Interval Tested from 3418 ft. to 3494 ft. Total Depth 3494 ft.

Packer Depth 3413 ft. Size 6 3/4 in. Packer Depth ft. Size in.

Packer Depth 3418 ft. Size 6 3/4 in. Packer Depth ft. Size in.

Depth of Selective Zone Set

Top Recorder Depth (Inside) 3485 ft. Recorder Number 1564 Cap. 3150

Bottom Recorder Depth (Outside) 3488 ft. Recorder Number 3085 Cap. 4500

Below Straddle Recorder Depth ft. Recorder Number Cap.

Drilling Contractor Murfin #21 Drill Collar Length 409 I. D. 2.26 in.

Mud Type Starch Viscosity No check Weight Pipe Length I. D. in.

Weight No check Water Loss No check cc. Drill Pipe Length 3087 I. D. 3.8 in.

Chlorides No check P.P.M. Test Tool Length 19 ft. Tool Size 5 1/2 in.

Jars: Make NO Serial Number Anchor Length 76 ft. Size 5 1/2 in.

Did Well Flow? NO Reversed Out NO Surface Choke Size 3/4 in. Bottom Choke Size 3/4 in.

Main Hole Size 7 7/8 in. Tool Joint Size 4 1/2 FH in.

Blow: Weak Blow Both Opens

Recovered 20 ft. of Oil Cut Mud (10% Fluid Loss - 31% O - 4% W - 55% M)

Recovered 60 ft. of Mud Cut Oil (12% Fluid Loss - 54% O - 5% W - 29% M)

Recovered 60 ft. of Oil Cut Mud (35% Fluid Loss - 21% O - 2% W - 42% M)

Recovered 60 ft. of Slightly Oil Cut Watery Mud (46% Fluid Loss - 5% O - 13% W - 36% M)

Recovered ft. of

Remarks:

Time On Location 10:00 A.M. Time Pick Up Tool 1:00 P.M. Time Off Location 8:30 A.M.

Time Set Packer (s) 2:57 A.M. Time Started Off Bottom 5:30 P.M. Maximum Temperature 109

Initial Hydrostatic Pressure (A) 1760 P.S.I.

Initial Flow Period Minutes 30 (B) 78 P.S.I. to (C) 93 P.S.I.

Initial Closed In Period Minutes 30 (D) 1180 P.S.I.

Final Flow Period Minutes 60 (E) 116 P.S.I. to (F) 140 P.S.I.

Final Closed In Period Minutes 30 (G) 1101 P.S.I.

Final Hydrostatic Pressure (H) 1744 P.S.I.

COMPANY TERMS

Western Testing Co., Inc. shall not be liable for damages of any kind to the property or personnel of the one for whom a test is made or for any loss suffered or sustained directly or indirectly through the use of its equipment, of its statements or opinion concerning the results of any test. Tools lost or damaged in the hole shall be paid at cost by the party for whom the test is made.

All charges subject to 12% interest after 60 days from date of invoice. Any expense incurred for collection will be added to the original amount.

Test Approved By Don E. Pratt Signature of Customer or his authorized representative

Western Representative Ken Metzger

Thank You!

FIELD INVOICE

Table with 2 columns: Item, Amount. Includes Open Hole Test (\$550.00), Mileage 17mi (\$12.15), and TOTAL (\$562.15).

WESTERN TESTING CO., INC.

Pressure Data

Date 9-18-80

Test Ticket No. 7539

Recorder No. 1564

Capacity 3150

Location 3485 Ft

Clock No. _____ Elevation _____

Well Temperature 109 °F

Point	Pressure	Time Given	Time Computed
A Initial Hydrostatic Mud	<u>1755</u> P.S.I.	<u>10:00 P.M.</u>	
B First Initial Flow Pressure	<u>82</u> P.S.I.	<u>30</u> Mins.	<u>30</u> Mins.
C First Final Flow Pressure	<u>90</u> P.S.I.	<u>30</u> Mins.	<u>27</u> Mins.
D Initial Closed-in Pressure	<u>1174</u> P.S.I.	<u>60</u> Mins.	<u>60</u> Mins.
E Second Initial Flow Pressure	<u>124</u> P.S.I.	<u>30</u> Mins.	<u>30</u> Mins.
F Second Final Flow Pressure	<u>149</u> P.S.I.		
G Final Closed-in Pressure	<u>1096</u> P.S.I.		
H Final Hydrostatic Mud	<u>1725</u> P.S.I.		

PRESSURE BREAKDOWN

First Flow Pressure
Breakdown: 6 Inc.
of 5 mins. and a
final inc. of 0 Min.

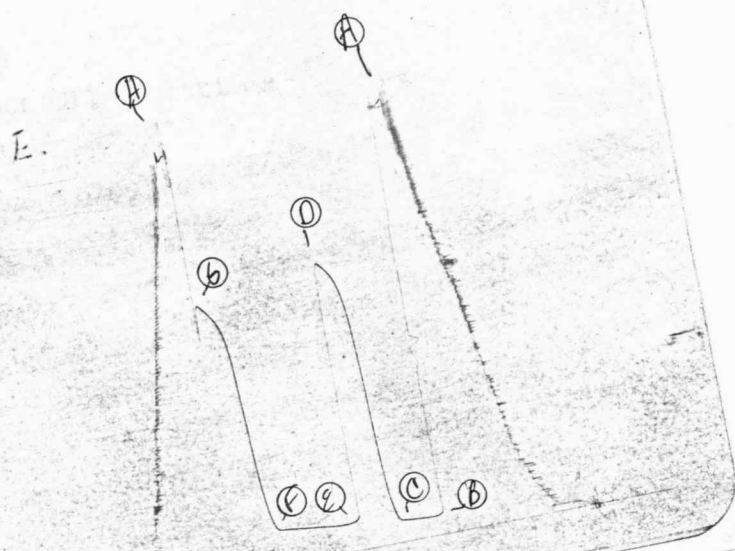
Initial Shut-In
Breakdown: 9 Inc.
of 3 mins. and a
final inc. of 0 Min.

Second Flow Pressure
Breakdown: 12 Inc.
of 5 mins. and a
final inc. of 0 Min.

Final Shut-In
Breakdown: 10 Inc.
of 3 mins. and a
final inc. of 0 Min.

Point Mins.	Press.	Point Minutes	Press.	Point Minutes	Press.	Point Minutes	Press.
P 1	<u>82</u>	0	<u>90</u>	0	<u>124</u>	0	<u>149</u>
P 2	<u>81</u>	3	<u>168</u>	5	<u>119</u>	3	<u>211</u>
P 3	<u>81</u>	6	<u>327</u>	10	<u>116</u>	6	<u>325</u>
P 4	<u>82</u>	9	<u>606</u>	15	<u>116</u>	9	<u>551</u>
P 5	<u>84</u>	12	<u>937</u>	20	<u>124</u>	12	<u>793</u>
P 6	<u>87</u>	15	<u>1044</u>	25	<u>126</u>	15	<u>947</u>
P 7	<u>90</u>	18	<u>1106</u>	30	<u>129</u>	18	<u>1005</u>
P 8		21	<u>1136</u>	35	<u>133</u>	21	<u>1036</u>
P 9		24	<u>1158</u>	40	<u>135</u>	24	<u>1063</u>
P10		27	<u>1174</u>	45	<u>138</u>	27	<u>1084</u>
P11		30		50	<u>143</u>	30	<u>1096</u>
P12		33		55	<u>146</u>	33	
P13		36		60	<u>149</u>	36	
P14		39		65		39	
P15		42		70		42	
P16		45		75		45	
P17		48		80		48	
P18		51		85		51	
P19		54		90		54	
P20		57				57	
		60				60	

JK # 7539
2



Company Don E. Pratt Oil Operations Lease & Well No. Gagelman #1-10
 Elevation - Formation Lansing Effective Pay - Ft. Ticket No. 7539
 Date 9-18-80 Sec. 10 Twp. 11S Range 22W County Trego State Kansas
 Test Approved by Don E. Pratt Western Representative Ken Metzler

Formation Test No. 1 Interval Tested from 3418 ft. to 3494 ft. Total Depth 3494 ft.
 Packer Depth 3413 ft. Size 6 3/4 in. Packer Depth 3418 ft. Size 6 3/4 in.
 Packer Depth - ft. Size - in. Packer Depth - ft. Size - in.

Depth of Selective Zone Set -
 Top Recorder Depth (Inside) 3485 ft. Recorder Number 1564 Cap. 3150
 Bottom Recorder Depth (Outside) 3488 ft. Recorder Number 3085 Cap. 4500
 Below Straddle Recorder Depth - ft. Recorder Number - Cap. -
 Drilling Contractor Murfin Drlg. #21 Drill Collar Length 409 I. D. 2.26 in. 4'H-90
 Mud Type Starch Viscosity - Weight Pipe Length - I. D. - in.
 Weight - Water Loss - cc. Drill Pipe Length 3087 I. D. 3.8 in.
 Chlorides - P.P.M. Test Tool Length 19 ft. Tool Size 5 1/2 in.
 Jars: Make - Serial Number - Anchor Length 76 ft. Size 5 1/2 in.
 Did Well Flow? No Reversed Out - Surface Choke Size 3/4 in. Bottom Choke Size 3/4 in.
 Main Hole Size 7 7/8 in. Tool Joint Size 4 1/2 FH in.

Blow: Weak blow throughout test.

Recovered 20 ft. of oil cut mud (10% fluid loss, 31% oil, 4% water, 55% mud)
 Recovered 60 ft. of mud cut oil (12% fluid loss, 54% oil, 5% water, 29% mud)
 Recovered 60 ft. of oil cut mud (35% fluid loss, 21% oil, 2% water, 42% mud)
 Recovered 60 ft. of slightly oil cut watery mud (46% fluid loss, 5% oil, 13% water, 36% mud)
 Recovered ft. of

Remarks:

Time Set Packer(s) 2:57 ~~P.M.~~ ^{A.M.} Time Started Off Bottom 5:30 ~~P.M.~~ ^{A.M.} Maximum Temperature 109
 Initial Hydrostatic Pressure (A) 1755 P.S.I.
 Initial Flow Period Minutes 30 (B) 82 P.S.I. to (C) 90 P.S.I.
 Initial Closed In Period Minutes 27 (D) 1174 P.S.I.
 Final Flow Period Minutes 60 (E) 124 P.S.I. to (F) 149 P.S.I.
 Final Closed In Period Minutes 30 (G) 1096 P.S.I.
 Final Hydrostatic Pressure (H) 1725 P.S.I.

WESTERN TESTING CO., INC.
Pressure Data

Date 9-18-80

Test Ticket No. 7539

Recorder No. 1564

Capacity 3150

Location 3485 Ft.

Clock No. ----- Elevation -----

Well Temperature 109 °F

Point	Pressure		Time Given	Time Computed
A Initial Hydrostatic Mud	<u>1755</u> P.S.I.	Open Tool	<u>10:00</u> P M	
B First Initial Flow Pressure	<u>82</u> P.S.I.	First Flow Pressure	<u>30</u> Mins.	<u>30</u> Mins.
C First Final Flow Pressure	<u>90</u> P.S.I.	Initial Closed-in Pressure	<u>30</u> Mins.	<u>27</u> Mins.
D Initial Closed-in Pressure	<u>1174</u> P.S.I.	Second Flow Pressure	<u>60</u> Mins.	<u>60</u> Mins.
E Second Initial Flow Pressure	<u>124</u> P.S.I.	Final Closed-in Pressure	<u>30</u> Mins.	<u>30</u> Mins.
F Second Final Flow Pressure	<u>149</u> P.S.I.			
G Final Closed-in Pressure	<u>1096</u> P.S.I.			
H Final Hydrostatic Mud	<u>1725</u> P.S.I.			

PRESSURE BREAKDOWN

First Flow Pressure		Initial Shut-In		Second Flow Pressure		Final Shut-In	
Breakdown: <u>6</u> Inc.		Breakdown: <u>9</u> Inc.		Breakdown: <u>12</u> Inc.		Breakdown: <u>10</u> Inc.	
of <u>5</u> mins. and a		of <u>3</u> mins. and a		of <u>5</u> mins. and a		of <u>3</u> mins. and a	
final inc. of <u>0</u> Min.		final inc. of <u>0</u> Min.		final inc. of <u>0</u> Min.		final inc. of <u>0</u> Min.	
Point Mins.	Press.	Point Minutes	Press.	Point Minutes	Press.	Point Minutes	Press.
P 1 <u>0</u>	<u>82</u>	<u>0</u>	<u>90</u>	<u>0</u>	<u>124</u>	<u>0</u>	<u>149</u>
P 2 <u>5</u>	<u>81</u>	<u>3</u>	<u>168</u>	<u>5</u>	<u>119</u>	<u>3</u>	<u>211</u>
P 3 <u>10</u>	<u>81</u>	<u>6</u>	<u>327</u>	<u>10</u>	<u>116</u>	<u>6</u>	<u>325</u>
P 4 <u>15</u>	<u>82</u>	<u>9</u>	<u>606</u>	<u>15</u>	<u>116</u>	<u>9</u>	<u>551</u>
P 5 <u>20</u>	<u>84</u>	<u>12</u>	<u>937</u>	<u>20</u>	<u>124</u>	<u>12</u>	<u>793</u>
P 6 <u>25</u>	<u>87</u>	<u>15</u>	<u>1044</u>	<u>25</u>	<u>126</u>	<u>15</u>	<u>947</u>
P 7 <u>30</u>	<u>90</u>	<u>18</u>	<u>1106</u>	<u>30</u>	<u>129</u>	<u>18</u>	<u>1005</u>
P 8		<u>21</u>	<u>1136</u>	<u>35</u>	<u>133</u>	<u>21</u>	<u>1036</u>
P 9		<u>24</u>	<u>1158</u>	<u>40</u>	<u>135</u>	<u>24</u>	<u>1063</u>
P10		<u>27</u>	<u>1174</u>	<u>45</u>	<u>138</u>	<u>27</u>	<u>1084</u>
P11				<u>50</u>	<u>143</u>	<u>30</u>	<u>1096</u>
P12				<u>55</u>	<u>146</u>		
P13				<u>60</u>	<u>149</u>		
P14				<u>65</u>			
P15				<u>70</u>			
P16				<u>75</u>			
P17				<u>80</u>			
P18				<u>85</u>			
P19				<u>90</u>			
P20							



WESTERN TESTING CO., INC.

FORMATION TESTING

TICKET No. **7540**
Kansas City

P. O. BOX 1599 PHONE (316) 262-5861
WICHITA, KANSAS 67201

Elevation Formation *K.C.* Eff. Pay Ft.

District *Wakeeney* Date *9-18-80* Customer Order No.

COMPANY NAME *Don E. Pratt Oil Operations*

ADDRESS *Box 370 Hays, Ks. 67601*

LEASE AND WELL NO. *Geselman #1-10* COUNTY *Trego* STATE *Ks* Sec. *10* Twp *11s* Rge *22w*

Mail Invoice To *Same* Co. Name Address No. Copies Requested *5*

Mail Charts To *Same* Address No. Copies Requested *5*

Formation Test No. *2* Interval Tested from *3490* ft. to *3520* ft. Total Depth *3520* ft.

Packer Depth *3485* ft. Size *6 3/4* in. Packer Depth ft. Size in.

Packer Depth *3490* ft. Size *6 3/4* in. Packer Depth ft. Size in.

Depth of Selective Zone Set

Top Recorder Depth (Inside) *3511* ft. Recorder Number *1564* Cap. *3150*

Bottom Recorder Depth (Outside) *3517* ft. Recorder Number *2603* Cap. *4400*

Below Straddle Recorder Depth ft. Recorder Number Cap.

Drilling Contractor *Murfin #21* Drill Collar Length *409* I. D. *2.26* in.

Mud Type *Starch* Viscosity *38* Weight Pipe Length I. D. in.

Weight *9.5* Water Loss *16.6* cc. Drill Pipe Length *3119* I. D. *3.8* in.

Chlorides *58,000* P.P.M. Test Tool Length *19* ft. Tool Size *5 1/2* in.

Jars: Make *NO* Serial Number Anchor Length *30* ft. Size *5 1/2* in.

Did Well Flow? *NO* Reversed Out *NO* Surface Choke Size *3/4* in. Bottom Choke Size *3/4* in.

Main Hole Size *7 7/8* in. Tool Joint Size *4 1/2 FH* in.

Blow: *weak blow thru out both opens*

Recovered *40* ft. of *Oil + Water Cut Mud (25% Fluid Loss - 25% O. - 12% W - 38% M)*

Recovered *300* ft. of *Slightly Oil Cut Watery Mud (Top - 13% Fluid Loss - 4% O - 17% W - 67% M)*

Recovered ft. of *(75,000 PPM Chlorides) (Bot. - 1% O - 62% W - 37% M)*

Recovered ft. of

Recovered ft. of

Remarks:

RECEIVED
SEP 23 1980
11:30

Time On Location *2:00* A.M. P.M. Time Pick Up Tool *4:00* A.M. P.M. Time Off Location *11:30* A.M. P.M.

Time Set Packer(s) *5:42* A.M. P.M. Time Started Off Bottom *8:45* A.M. P.M. Maximum Temperature *113°*

Initial Hydrostatic Pressure (A) *1808* P.S.I.

Initial Flow Period Minutes *30* (B) *47* P.S.I. to (C) *62* P.S.I.

Initial Closed In Period Minutes *30* (D) *1054* P.S.I.

Final Flow Period Minutes *90* (E) *93* P.S.I. to (F) *163* P.S.I.

Final Closed In Period Minutes *30* (G) *1038* P.S.I.

Final Hydrostatic Pressure (H) *1792* P.S.I.

COMPANY TERMS

Western Testing Co., Inc. shall not be liable for damages of any kind to the property or personnel of the one for whom a test is made or for any loss suffered or sustained directly or indirectly through the use of its equipment, of its statements or opinion concerning the results of any test. Tools lost or damaged in the hole shall be paid at cost by the party for whom the test is made.

All charges subject to 12% interest after 60 days from date of invoice. Any expense incurred for collection will be added to the original amount.

Test Approved By _____
Signature of Customer or his authorized representative

Western Representative *Ken Meigs*

Thank You!

FIELD INVOICE

Open Hole Test	\$ <i>550.00</i>
Misrun	\$
Straddle Test	\$
Jars	\$
Selective Zone	\$
Safety Joint	\$
Standby	\$
Evaluation	\$
Extra Packer	\$
Circ. Sub.	\$
Mileage	\$
Fluid Sampler	\$
Extra Charts	\$
Insurance	\$
TOTAL	\$ <i>550.00</i>

WESTERN TESTING CO., INC.

Pressure Data

Date 9-18-80

Test Ticket No. 7540

Recorder No. 1564

Capacity 3150

Location 3511 Ft.

Clock No. _____

Elevation _____

Well Temperature 113 °F

Point	Pressure	Time Given	Time Computed
A Initial Hydrostatic Mud	<u>1757</u> P.S.I.	<u>5:42 P</u>	<u>M</u>
B First Initial Flow Pressure	<u>50</u> P.S.I.	<u>30</u> Mins.	<u>30</u> Mins.
C First Final Flow Pressure	<u>68</u> P.S.I.	<u>30</u> Mins.	<u>27</u> Mins.
D Initial Closed-in Pressure	<u>1051</u> P.S.I.	<u>90</u> Mins.	<u>90</u> Mins.
E Second Initial Flow Pressure	<u>101</u> P.S.I.	<u>30</u> Mins.	<u>30</u> Mins.
F Second Final Flow Pressure	<u>166</u> P.S.I.		
G Final Closed-in Pressure	<u>1033</u> P.S.I.		
H Final Hydrostatic Mud	<u>1747</u> P.S.I.		

PRESSURE BREAKDOWN

First Flow Pressure
Breakdown: 6 Inc.
of 5 mins. and a
final inc. of 0 Min.

Initial Shut-In
Breakdown: 9 Inc.
of 3 mins. and a
final inc. of 0 Min.

Second Flow Pressure
Breakdown: 18 Inc.
of 5 mins. and a
final inc. of 0 Min.

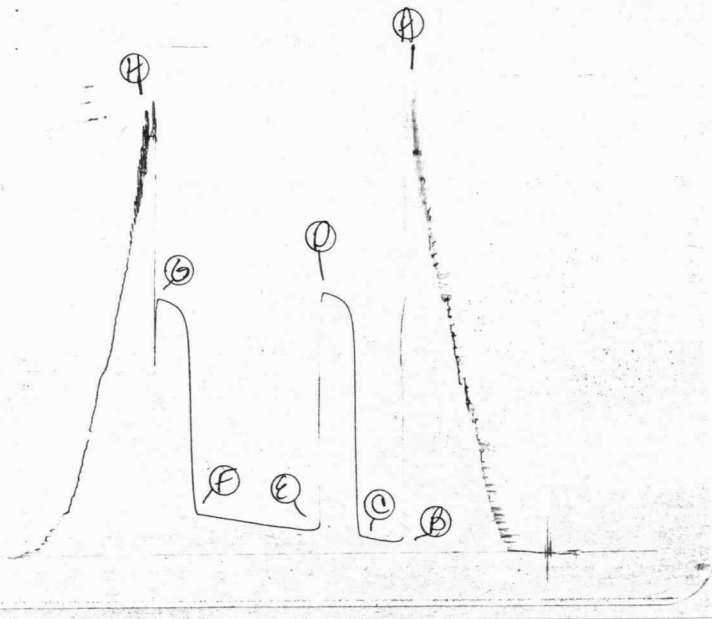
Final Shut-In
Breakdown: 10 Inc.
of 3 mins. and a
final inc. of 0 Min.

Point Mins.	Press.	Point Minutes	Press.	Point Minutes	Press.	Point Minutes	Press.
P 1	0	0	50	0	68	0	101
P 2	5	3	45	3	299	3	95
P 3	10	6	48	6	920	6	96
P 4	15	9	54	9	992	9	101
P 5	20	12	57	12	1014	12	104
P 6	25	15	64	15	1030	15	107
P 7	30	18	68	18	1038	18	110
P 8	35	21		21	1041	21	113
P 9	40	24		24	1044	24	118
P10	45	27		27	1051	27	124
P11	50	30		30		30	129
P12	55	33		33		33	132
P13	60	36		36		36	137
P14		39		39		39	141
P15		42		42		42	146
P16		45		45		45	152
P17		48		48		48	158
P18		51		51		51	161
P19		54		54		54	166
P20		57		57		57	
		60		60		60	

27

1561

KT# 7540
I



Company Don E. Pratt Oil Operations Lease & Well No. Gagelman #1-10
 Elevation ----- Formation Kansas City Effective Pay ----- Ft. Ticket No. 7540
 Date 9-18-80 Sec. 10 Twp. 11 S Range 22 W County Trego State Kansas
 Test Approved by ----- Western Representative Ken Metzler

Formation Test No. 2 Interval Tested from 3490 ft. to 3520 ft. Total Depth 3520 ft.
 Packer Depth 3485 ft. Size 6 3/4 in. Packer Depth ----- ft. Size ----- in.
 Packer Depth 3490 ft. Size 6 3/4 in. Packer Depth ----- ft. Size ----- in.

Depth of Selective Zone Set -----
 Top Recorder Depth (Inside) 3511 ft. Recorder Number 1564 Cap. 3150
 Bottom Recorder Depth (Outside) 3514 ft. Recorder Number 2603 Cap. 4400
 Below Straddle Recorder Depth ----- ft. Recorder Number ----- Cap. -----

Drilling Contractor Murfin #21 Drill Collar Length 409 I. D. 2.26 in.
 Mud Type Starch Viscosity 38 Weight Pipe Length ----- I. D. ----- in.
 Weight 9.5 Water Loss 16.6 cc. Drill Pipe Length 3119 I. D. 3.8 in.
 Chlorides 58,000 P.P.M. Test Tool Length 19 ft. Tool Size 5 1/2 in.
 Jars: Make NO Serial Number ----- Anchor Length 30 ft. Size 5 1/2 in.
 Did Well Flow? NO Reversed Out NO Surface Choke Size 3/4 in. Bottom Choke Size 3/4 in.
 Main Hole Size 7 7/8 in. Tool Joint Size 4 1/2 FH in.

Blow: Weak blow throughout both opens.

Recovered 40 ft. of oil and water, cut mud. (25% Fluid Loss, 25% Oil, 12% Water, 38% Mud.)
 Recovered 300 ft. of slightly oil, cut watery mud. (Top-13% Fluid Loss, 4% oil, 17% Water, 67% Mud)
 Recovered ----- ft. of (75,000 PPM Chlorides) (Bottom-1% Oil, 62% Water, 37% Mud)
 Recovered ----- ft. of -----
 Recovered ----- ft. of -----

Remarks: -----

Time Set Packer(s) 5:42 ~~XXX~~ P.M. Time Started Off Bottom 4:00 ~~XXX~~ P.M. Maximum Temperature 113⁰
 Initial Hydrostatic Pressure ----- (A) 1757 P.S.I.
 Initial Flow Period ----- Minutes 30 (B) 50 P.S.I. to (C) 68 P.S.I.
 Initial Closed In Period ----- Minutes 27 (D) 1051 P.S.I.
 Final Flow Period ----- Minutes 90 (E) 101 P.S.I. to (F) 166 P.S.I.
 Final Closed In Period ----- Minutes 30 (G) 1033 P.S.I.
 Final Hydrostatic Pressure ----- (H) 1747 P.S.I.

WESTERN TESTING CO., INC.
Pressure Data

Date 9-18-80 Test Ticket No. 7540
 Recorder No. 1564 Capacity 3150 Location 3511 Ft.
 Clock No. ----- Elevation ----- Well Temperature 113 °F

Point	Pressure			Time Given	Time Computed
A Initial Hydrostatic Mud	<u>1757</u> P.S.I.	Open Tool		<u>5:42</u> P M	
B First Initial Flow Pressure	<u>50</u> P.S.I.	First Flow Pressure		<u>30</u> Mins.	<u>30</u> Mins.
C First Final Flow Pressure	<u>68</u> P.S.I.	Initial Closed-in Pressure		<u>30</u> Mins.	<u>27</u> Mins.
D Initial Closed-in Pressure	<u>1051</u> P.S.I.	Second Flow Pressure		<u>90</u> Mins.	<u>90</u> Mins.
E Second Initial Flow Pressure	<u>101</u> P.S.I.	Final Closed-in Pressure		<u>30</u> Mins.	<u>30</u> Mins.
F Second Final Flow Pressure	<u>166</u> P.S.I.				
G Final Closed-in Pressure	<u>1033</u> P.S.I.				
H Final Hydrostatic Mud	<u>1747</u> P.S.I.				

PRESSURE BREAKDOWN

First Flow Pressure		Initial Shut-In		Second Flow Pressure		Final Shut-In	
Breakdown: <u>6</u> Inc.		Breakdown: <u>9</u> Inc.		Breakdown: <u>18</u> Inc.		Breakdown: <u>10</u> Inc.	
of <u>5</u> mins. and a		of <u>3</u> mins. and a		of <u>5</u> mins. and a		of <u>3</u> mins. and a	
final inc. of <u>0</u> Min.		final inc. of <u>0</u> Min.		final inc. of <u>0</u> Min.		final inc. of <u>0</u> Min.	
Point Mins.	Press.	Point Minutes	Press.	Point Minutes	Press.	Point Minutes	Press.
P 1 <u>0</u>	<u>50</u>	<u>0</u>	<u>68</u>	<u>0</u>	<u>101</u>	<u>0</u>	<u>166</u>
P 2 <u>5</u>	<u>45</u>	<u>3</u>	<u>299</u>	<u>5</u>	<u>95</u>	<u>3</u>	<u>268</u>
P 3 <u>10</u>	<u>48</u>	<u>6</u>	<u>920</u>	<u>10</u>	<u>96</u>	<u>6</u>	<u>681</u>
P 4 <u>15</u>	<u>54</u>	<u>9</u>	<u>992</u>	<u>15</u>	<u>101</u>	<u>9</u>	<u>943</u>
P 5 <u>20</u>	<u>57</u>	<u>12</u>	<u>1014</u>	<u>20</u>	<u>104</u>	<u>12</u>	<u>980</u>
P 6 <u>25</u>	<u>64</u>	<u>15</u>	<u>1030</u>	<u>25</u>	<u>107</u>	<u>15</u>	<u>998</u>
P 7 <u>30</u>	<u>68</u>	<u>18</u>	<u>1038</u>	<u>30</u>	<u>110</u>	<u>18</u>	<u>1008</u>
P 8		<u>21</u>	<u>1041</u>	<u>35</u>	<u>113</u>	<u>21</u>	<u>1017</u>
P 9		<u>24</u>	<u>1044</u>	<u>40</u>	<u>118</u>	<u>24</u>	<u>1024</u>
P10		<u>27</u>	<u>1051</u>	<u>45</u>	<u>124</u>	<u>27</u>	<u>1028</u>
P11				<u>50</u>	<u>129</u>	<u>30</u>	<u>1033</u>
P12				<u>55</u>	<u>132</u>		
P13				<u>60</u>	<u>137</u>		
P14				<u>65</u>	<u>141</u>		
P15				<u>70</u>	<u>146</u>		
P16				<u>75</u>	<u>152</u>		
P17				<u>80</u>	<u>158</u>		
P18				<u>85</u>	<u>161</u>		
P19				<u>90</u>	<u>166</u>		
P20							



WESTERN TESTING CO., INC.
FORMATION TESTING

TICKET No 7541
Kansas City

P. O. BOX 1599 PHONE (316) 262-5861
WICHITA, KANSAS 67201

Elevation Formation Eff. Pay Ft.

District Wokeeney Date 9-19-80 Customer Order No.

COMPANY NAME Don E. Pratt Oil Operations

ADDRESS Box 370 Hays, Ks. 67601

LEASE AND WELL NO. Gagelman #1-10 COUNTY Trego STATE Ks Sec. 10 Twp 11S Rge 22W

Mail Invoice To Gagelman #1-10 Same No. Copies Requested 5
Co. Name Address

Mail Charts To Same No. Copies Requested 5
Address

Formation Test No. 3 Interval Tested from 3550 ft. to 3620 ft. Total Depth 3620 ft.

Packer Depth 3545 ft. Size 6 3/4 in. Packer Depth ✓ ft. Size ✓ in.

Packer Depth 3550 ft. Size 6 3/4 in. Packer Depth ✓ ft. Size ✓ in.

Depth of Selective Zone Set ✓

Top Recorder Depth (Inside) 3611 ft. Recorder Number 1564 Cap. 3150

Bottom Recorder Depth (Outside) 3614 ft. Recorder Number 2603 Cap. 4400

Below Straddle Recorder Depth ✓ ft. Recorder Number ✓ Cap. ✓

Drilling Contractor Murfin #21 Drill Collar Length 409 I. D. 2.26 in.

Mud Type Starch Viscosity 41 Weight Pipe Length ✓ I. D. ✓ in.

Weight 9.5 Water Loss 13.2 cc. Drill Pipe Length 3212 I. D. 3.8 in.

Chlorides 51,000 P.P.M. Test Tool Length 19 ft. Tool Size 5 1/2 in.

Jars: Make NO Serial Number ✓ Anchor Length 70 ft. Size 5 1/2 in.

Did Well Flow? NO Reversed Out NO Surface Choke Size 3/4 in. Bottom Choke Size 3/4 in.

Main Hole Size 7 7/8 in. Tool Joint Size 4 1/2 FH in.

Blow: Very Weak Blow Died 17 Min - 1st Open Flushed Tool

NO Help final flow period

Recovered 10 ft. of Oil Specked Mud

Recovered ✓ ft. of ✓

Recovered ✓ ft. of ✓

Recovered ✓ ft. of ✓

Recovered ✓ ft. of ✓

Remarks: Charts Did NOT Indicate Flush

Time On Location 10:30 A.M. Time Pick Up Tool 11:00 A.M. Time Off Location 11:30 A.M.

Time Set Packer(s) 12:27 P.M. Time Started Off Bottom 2:00 P.M. Maximum Temperature 111°

Initial Hydrostatic Pressure (A) 1904 P.S.I.

Initial Flow Period (B) 60 Minutes (C) 70 P.S.I.

Initial Closed In Period (D) 30 Minutes (E) 109 P.S.I.

Final Flow Period (F) X P.S.I.

Final Closed In Period (G) X P.S.I.

Final Hydrostatic Pressure (H) 1888 P.S.I.

COMPANY TERMS

Western Testing Co., Inc. shall not be liable for damages of any kind to the property or personnel of the one for whom a test is made or for any loss suffered or sustained directly or indirectly through the use of its equipment, of its statements or opinion concerning the results of any test. Tools lost or damaged in the hole shall be paid at cost by the party for whom the test is made.

All charges subject to 12% interest after 60 days from date of invoice. Any expense incurred for collection will be added to the original amount.

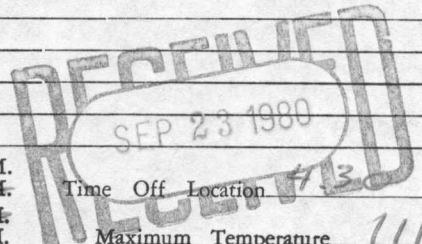
Test Approved By _____
Signature of Customer or his authorized representative

Western Representative Ken Metzler

Thank You!

FIELD INVOICE

Open Hole Test	\$ <u>550.00</u>
Misrun	\$ _____
Straddle Test	\$ _____
Jars	\$ _____
Selective Zone	\$ _____
Safety Joint	\$ _____
Standby	\$ _____
Evaluation	\$ _____
Extra Packer	\$ _____
Circ. Sub.	\$ _____
Mileage	\$ _____
Fluid Sampler	\$ _____
Extra Charts	\$ _____
Insurance	\$ _____
TOTAL	\$ <u>550.00</u>



WESTERN TESTING CO., INC.

Pressure Data

Date 9-19-80

Test Ticket No. 7541

Recorder No. 1564

Capacity 3150 Location 3611 Ft.

Clock No. _____ Elevation _____ Well Temperature 111 °F

Point	Pressure	Time Given	Time Computed
A Initial Hydrostatic Mud	<u>1883</u> P.S.I.	<u>12:27 P.M.</u>	
B First Initial Flow Pressure	<u>73</u> P.S.I.	<u>60</u> Mins.	<u>60</u> Mins.
C First Final Flow Pressure	<u>65</u> P.S.I.	<u>30</u> Mins.	<u>30</u> Mins.
D Initial Closed-in Pressure	<u>109</u> P.S.I.	_____ Mins.	_____ Mins.
E Second Initial Flow Pressure	_____ P.S.I.	_____ Mins.	_____ Mins.
F Second Final Flow Pressure	_____ P.S.I.		
G Final Closed-in Pressure	_____ P.S.I.		
H Final Hydrostatic Mud	<u>1878</u> P.S.I.		

PRESSURE BREAKDOWN

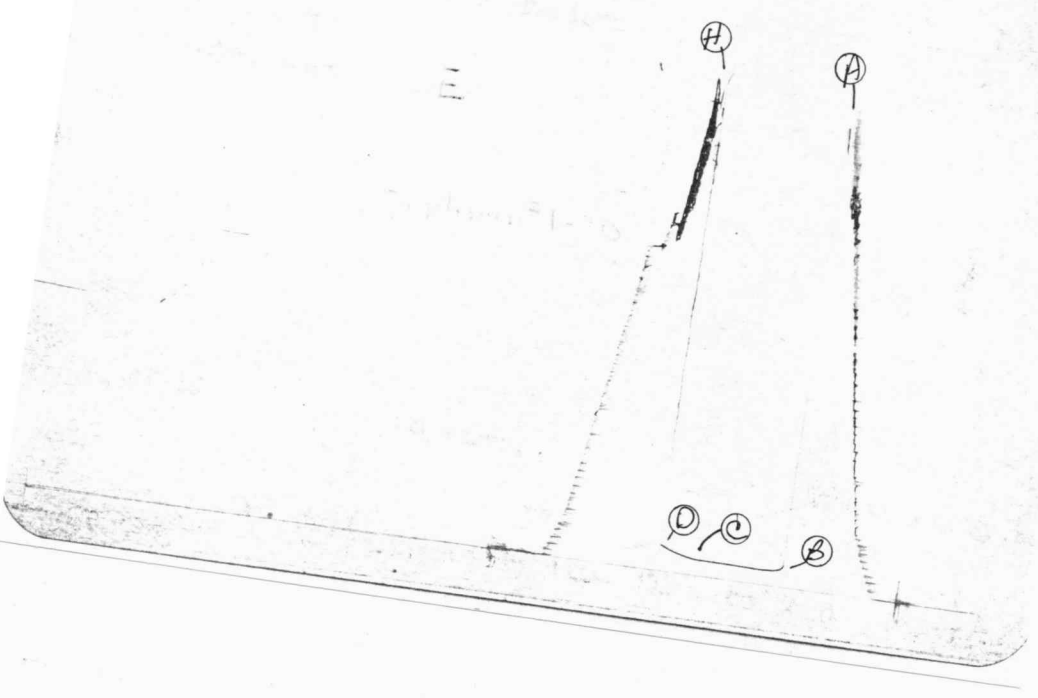
Point Mins.	First Flow Pressure		Initial Shut-In		Second Flow Pressure		Final Shut-In	
	Breakdown:	of _____ mins. and a final inc. of _____ Min.	Breakdown:	of _____ mins. and a final inc. of _____ Min.	Breakdown:	of _____ mins. and a final inc. of _____ Min.	Breakdown:	of _____ mins. and a final inc. of _____ Min.
	Press.	Point Minutes	Press.	Point Minutes	Press.	Point Minutes	Press.	Point Minutes
P 1	<u>73</u>	<u>0</u>	<u>65</u>	<u>0</u>		<u>0</u>		<u>0</u>
P 2	<u>68</u>	<u>5</u>	<u>68</u>	<u>3</u>		<u>5</u>		<u>3</u>
P 3	<u>64</u>	<u>10</u>	<u>70</u>	<u>6</u>		<u>10</u>		<u>6</u>
P 4	<u>62</u>	<u>15</u>	<u>74</u>	<u>9</u>		<u>15</u>		<u>9</u>
P 5	<u>62</u>	<u>20</u>	<u>78</u>	<u>12</u>		<u>20</u>		<u>12</u>
P 6	<u>62</u>	<u>25</u>	<u>81</u>	<u>15</u>		<u>25</u>		<u>15</u>
P 7	<u>62</u>	<u>30</u>	<u>87</u>	<u>18</u>		<u>30</u>		<u>18</u>
P 8	<u>65</u>	<u>35</u>	<u>91</u>	<u>21</u>		<u>35</u>		<u>21</u>
P 9	<u>65</u>	<u>40</u>	<u>98</u>	<u>24</u>		<u>40</u>		<u>24</u>
P10	<u>65</u>	<u>45</u>	<u>104</u>	<u>27</u>		<u>45</u>		<u>27</u>
P11	<u>65</u>	<u>50</u>	<u>109</u>	<u>30</u>		<u>50</u>		<u>30</u>
P12	<u>65</u>	<u>55</u>		<u>33</u>		<u>55</u>		<u>33</u>
P13	<u>65</u>	<u>60</u>		<u>36</u>		<u>60</u>		<u>36</u>
P14				<u>39</u>		<u>65</u>		<u>39</u>
P15				<u>42</u>		<u>70</u>		<u>42</u>
P16				<u>45</u>		<u>75</u>		<u>45</u>
P17				<u>48</u>		<u>80</u>		<u>48</u>
P18				<u>51</u>		<u>85</u>		<u>51</u>
P19				<u>54</u>		<u>90</u>		<u>54</u>
P20				<u>57</u>				<u>57</u>
				<u>60</u>				<u>60</u>

1541
I

1267

E

Diagram 1-10



Company Don E. Pratt Operations Lease & Well No. Gagelman #1-10
 Elevation ----- Formation Kansas City Effective Pay ----- Ft. Ticket No. 7541
 Date 9-19-80 Sec. 10 Twp. 11 S Range 22 W County Trego State Kansas
 Test Approved by ----- Western Representative Ken Metzler

Formation Test No. 3 Interval Tested from 3550 ft. to 3620 ft. Total Depth 3620 ft.
 Packer Depth 3545 ft. Size 6 3/4 in. Packer Depth ----- ft. Size ----- in.
 Packer Depth 3550 ft. Size 6 3/4 in. Packer Depth ----- ft. Size ----- in.

Depth of Selective Zone Set -----
 Top Recorder Depth (Inside) 3611 ft. Recorder Number 1564 Cap. 3150
 Bottom Recorder Depth (Outside) 3614 ft. Recorder Number 2603 Cap. 4400
 Below Straddle Recorder Depth ----- ft. Recorder Number ----- Cap. -----

Drilling Contractor Murfin #21 Drill Collar Length 409 I. D. 2.26 in.
 Mud Type Starch Viscosity 41 Weight Pipe Length ----- I. D. ----- in.
 Weight 9.5 Water Loss 13.2 cc. Drill Pipe Length 3212 I. D. 3.8 in.
 Chlorides 51,000 P.P.M. Test Tool Length 19 ft. Tool Size 5 1/2 in.
 Jars: Make No Serial Number ----- Anchor Length 70 ft. Size 5 1/2 in.
 Did Well Flow? No Reversed Out No Surface Choke Size 3/4 in. Bottom Choke Size 3/4 in.
 Main Hole Size 7 7/8 in. Tool Joint Size 7 7/8 FH in.

Blow: Very weak blow, died in 17 Minutes, initial flow period. Flushed tool. No help.

Recovered 10 ft. of Oil specked mud.
 Recovered ----- ft. of -----
 Recovered ----- ft. of -----
 Recovered ----- ft. of -----
 Recovered ----- ft. of -----
 Remarks: Charts did not indicate flush.

Time Set Packer(s)	<u>12:27</u>	<u>AM</u> <u>PM</u>	Time Started Off Bottom	<u>11:00</u>	<u>AM</u> <u>PM</u>	Maximum Temperature	<u>111</u>
Initial Hydrostatic Pressure			(A)	<u>1883</u>	P.S.I.		
Initial Flow Period	Minutes	<u>60</u>	(B)	<u>73</u>	P.S.I. to (C)	<u>65</u>	P.S.I.
Initial Closed In Period	Minutes	<u>30</u>	(D)	<u>109</u>	P.S.I.		
Final Flow Period	Minutes	<u>--</u>	(E)	<u>-----</u>	P.S.I. to (F)	<u>---</u>	P.S.I.
Final Closed In Period	Minutes	<u>--</u>	(G)	<u>-----</u>	P.S.I.		
Final Hydrostatic Pressure			(H)	<u>1878</u>	P.S.I.		

WESTERN TESTING CO., INC.
Pressure Data

Date 9-19-80 Test Ticket No. 7541
 Recorder No. 1564 Capacity 3150 Location 3611 Ft.
 Clock No. ----- Elevation ----- Well Temperature 111 °F

Point	Pressure		Time Given	Time Computed
A Initial Hydrostatic Mud	<u>1883</u> P.S.I.	Open Tool	<u>12:27</u> P.M.	
B First Initial Flow Pressure	<u>73</u> P.S.I.	First Flow Pressure	<u>60</u> Mins.	<u>60</u> Mins.
C First Final Flow Pressure	<u>65</u> P.S.I.	Initial Closed-in Pressure	<u>30</u> Mins.	<u>30</u> Mins.
D Initial Closed-in Pressure	<u>109</u> P.S.I.	Second Flow Pressure	<u>--</u> Mins.	<u>--</u> Mins.
E Second Initial Flow Pressure	<u>--</u> P.S.I.	Final Closed-in Pressure	<u>--</u> Mins.	<u>--</u> Mins.
F Second Final Flow Pressure	<u>--</u> P.S.I.			
G Final Closed-in Pressure	<u>--</u> P.S.I.			
H Final Hydrostatic Mud	<u>1878</u> P.S.I.			

PRESSURE BREAKDOWN

Point Mins.	First Flow Pressure		Initial Shut-In		Second Flow Pressure		Final Shut-In	
	Press.	Point Minutes	Press.	Point Minutes	Press.	Point Minutes	Press.	Point Minutes
P 1 <u>0</u>	<u>73</u>	<u>0</u>	<u>65</u>					
P 2 <u>5</u>	<u>68</u>	<u>3</u>	<u>68</u>					
P 3 <u>10</u>	<u>64</u>	<u>6</u>	<u>70</u>					
P 4 <u>15</u>	<u>62</u>	<u>9</u>	<u>74</u>					
P 5 <u>20</u>	<u>62</u>	<u>12</u>	<u>78</u>					
P 6 <u>25</u>	<u>62</u>	<u>15</u>	<u>81</u>					
P 7 <u>30</u>	<u>62</u>	<u>18</u>	<u>87</u>					
P 8 <u>35</u>	<u>65</u>	<u>21</u>	<u>91</u>					
P 9 <u>40</u>	<u>65</u>	<u>24</u>	<u>98</u>					
P10 <u>45</u>	<u>65</u>	<u>27</u>	<u>104</u>					
P11 <u>50</u>	<u>65</u>	<u>30</u>	<u>109</u>					
P12 <u>55</u>	<u>65</u>							
P13 <u>60</u>	<u>65</u>							
P14 _____								
P15 _____								
P16 _____								
P17 _____								
P18 _____								
P19 _____								
P20 _____								

WESTERN TESTING CO., INC.

Pressure Data

Date 9-20-80

Test Ticket No. 7542

Recorder No. 1564

Capacity 3150

Location 3671 Ft.

Clock No. _____ Elevation _____

Well Temperature 8 113 °F

Point	Pressure	P.S.I.
A Initial Hydrostatic Mud	<u>1872</u>	P.S.I.
B First Initial Flow Pressure	70 <u>70</u>	P.S.I.
C First Final Flow Pressure	<u>60</u>	P.S.I.
D Initial Closed-in Pressure	<u>70</u>	P.S.I.
E Second Initial Flow Pressure	_____	P.S.I.
F Second Final Flow Pressure	_____	P.S.I.
G Final Closed-in Pressure	_____	P.S.I.
H Final Hydrostatic Mud	<u>1850</u>	P.S.I.

	Time Given	Time Computed
Open Tool	<u>5:27</u> AM	_____
First Flow Pressure	<u>60</u> Mins.	<u>60</u> Mins.
Initial Closed-in Pressure	<u>30</u> Mins.	<u>30</u> Mins.
Second Flow Pressure	_____ Mins.	_____ Mins.
Final Closed-in Pressure	_____ Mins.	_____ Mins.

PRESSURE BREAKDOWN

First Flow Pressure
Breakdown: 12 Inc.
of 5 mins. and a
final inc. of 0 Min.

Initial Shut-In
Breakdown: _____ Inc.
of 3 mins. and a
final inc. of 0 Min.

Second Flow Pressure
Breakdown: _____ Inc.
of 5 mins. and a
final inc. of 0 Min.

Final Shut-In
Breakdown: _____ Inc.
of 3 mins. and a
final inc. of 0 Min.

Point Mins.	Press.	Point Minutes	Press.	Point Minutes	Press.	Point Minutes	Press.
P 1 0	<u>70</u>	0	<u>60</u>	0	_____	0	_____
P 2 5	<u>64</u>	3	<u>60</u>	5	_____	3	_____
P 3 10	<u>57</u>	6	<u>60</u>	10	_____	6	_____
P 4 15	<u>57</u>	9	<u>60</u>	15	_____	9	_____
P 5 20	<u>57</u>	12	<u>62</u>	20	_____	12	_____
P 6 25	<u>57</u>	15	<u>64</u>	25	_____	15	_____
P 7 30	<u>FLUSHED TOOL</u>	18	<u>65</u>	30	_____	18	_____
P 8 35	<u>62</u>	21	<u>67</u>	35	_____	21	_____
P 9 40	<u>62</u>	24	<u>68</u>	40	_____	24	_____
P10 45	<u>62</u>	27	<u>69</u>	45	_____	27	_____
P11 50	<u>60</u>	30	<u>70</u>	50	_____	30	_____
P12 55	<u>60</u>	<u>33</u>	_____	55	_____	33	_____
P13 60	<u>60</u>	36	_____	60	_____	36	_____
P14 _____	_____	39	_____	65	_____	39	_____
P15 _____	_____	42	_____	70	_____	42	_____
P16 _____	_____	45	_____	75	_____	45	_____
P17 _____	_____	48	_____	80	_____	48	_____
P18 _____	_____	51	_____	85	_____	51	_____
P19 _____	_____	54	_____	90	_____	54	_____
P20 _____	_____	57	_____	_____	_____	57	_____
		60	_____	_____	_____	60	_____

Net # 7542
I



Company Don E. Pratt Oil Operations Lease & Well No. Gagelman #1-10
 Elevation - Formation Kansas City Effective Pay - Ft. Ticket No. 7542
 Date 9-20-80 Sec. 10 Twp. 11S Range 22W County Trego State Kansas
 Test Approved by _____ Western Representative Ken Metzler

Formation Test No. 4 Interval Tested from 3615 ft. to 3680 ft. Total Depth 3680 ft.
 Packer Depth 3610 ft. Size 6 3/4 in. Packer Depth 3615 ft. Size 6 3/4 in.
 Packer Depth - ft. Size - in. Packer Depth - ft. Size - in.

Depth of Selective Zone Set -
 Top Recorder Depth (Inside) 3671 ft. Recorder Number 1564 Cap. 3150
 Bottom Recorder Depth (Outside) 3674 ft. Recorder Number 2603 Cap. 4400
 Below Straddle Recorder Depth - ft. Recorder Number - Cap. -

Drilling Contractor Murfin Drlg. (#21) Drill Collar Length 409 I. D. 2.26 in.
 Mud Type Starch Viscosity 39 Weight Pipe Length - I. D. - in.
 Weight 9.4 Water Loss 12.8 cc. Drill Pipe Length 3275 I. D. 3.8 in.
 Chlorides 47,000 P.P.M. Test Tool Length 19 ft. Tool Size 5 1/2 in.
 Jars: Make - Serial Number - Anchor Length 65 ft. Size 5 1/2 in.
 Did Well Flow? No Reversed Out - Surface Choke Size 3/4 in. Bottom Choke Size 3/4 in.
 Main Hole Size 7 7/8 in. Tool Joint Size 4 1/2 FH in.

Blow: Very weak blow, died in 8 minutes on initial flow period. Flushed tool, no help.

Recovered 5 ft. of mud no show
 Recovered _____ ft. of _____
 Recovered _____ ft. of _____
 Recovered _____ ft. of _____
 Recovered _____ ft. of _____

Remarks: _____

Time Set Packer(s) 5:27 ~~P.M.~~ ^{A.M.} Time Started Off Bottom 7:00 ~~P.M.~~ ^{A.M.} Maximum Temperature 113
 Initial Hydrostatic Pressure (A) 1872 P.S.I.
 Initial Flow Period Minutes 60 (B) 70 P.S.I. to (C) 60 P.S.I.
 Initial Closed In Period Minutes 30 (D) 70 P.S.I.
 Final Flow Period Minutes - (E) - P.S.I. to (F) - P.S.I.
 Final Closed In Period Minutes - (G) - P.S.I.
 Final Hydrostatic Pressure (H) - P.S.I.

WESTERN TESTING CO., INC.
Pressure Data

Date 9-20-80

Test Ticket No. 7542

Recorder No. 1564

Capacity 3150

Location 3671 Ft.

Clock No. ----- Elevation -----

Well Temperature 113 °F

Point	Pressure		Time Given	Time Computed
A Initial Hydrostatic Mud	<u>1872</u> P.S.I.	Open Tool	<u>5:27</u> A M	
B First Initial Flow Pressure	<u>70</u> P.S.I.	First Flow Pressure	<u>60</u> Mins.	<u>60</u> Mins.
C First Final Flow Pressure	<u>60</u> P.S.I.	Initial Closed-in Pressure	<u>30</u> Mins.	<u>30</u> Mins.
D Initial Closed-in Pressure	<u>70</u> P.S.I.	Second Flow Pressure	<u>--</u> Mins.	<u>--</u> Mins.
E Second Initial Flow Pressure	<u>--</u> P.S.I.	Final Closed-in Pressure	<u>--</u> Mins.	<u>--</u> Mins.
F Second Final Flow Pressure	<u>--</u> P.S.I.			
G Final Closed-in Pressure	<u>--</u> P.S.I.			
H Final Hydrostatic Mud	<u>1850</u> P.S.I.			

PRESSURE BREAKDOWN

First Flow Pressure
Breakdown: 12 Inc.
of 5 mins. and a
final inc. of 0 Min.

Initial Shut-In
Breakdown: 10 Inc.
of 3 mins. and a
final inc. of 0 Min.

Second Flow Pressure
Breakdown: 0 Inc.
of 5 mins. and a
final inc. of 0 Min.

Final Shut-In
Breakdown: 0 Inc.
of 3 mins. and a
final inc. of 0 Min.

Point Mins.	Press.	Point Minutes	Press.	Point Minutes	Press.	Point Minutes	Press.
P 1 <u>0</u>	<u>70</u>	<u>0</u>	<u>60</u>				
P 2 <u>5</u>	<u>64</u>	<u>3</u>	<u>60</u>				
P 3 <u>10</u>	<u>57</u>	<u>6</u>	<u>60</u>				
P 4 <u>15</u>	<u>57</u>	<u>9</u>	<u>60</u>				
P 5 <u>20</u>	<u>57</u>	<u>12</u>	<u>62</u>				
P 6 <u>25</u>	<u>57</u>	<u>15</u>	<u>64</u>				
P 7 <u>30</u>	<u>Flushed Too]</u>	<u>18</u>	<u>65</u>				
P 8 <u>35</u>	<u>62</u>	<u>21</u>	<u>67</u>				
P 9 <u>40</u>	<u>62</u>	<u>24</u>	<u>68</u>				
P10 <u>45</u>	<u>62</u>	<u>27</u>	<u>69</u>				
P11 <u>50</u>	<u>60</u>	<u>30</u>	<u>70</u>				
P12 <u>55</u>	<u>60</u>						
P13 <u>60</u>	<u>60</u>						
P14							
P15							
P16							
P17							
P18							
P19							
P20							



WESTERN TESTING CO., INC.

FORMATION TESTING

TICKET NO

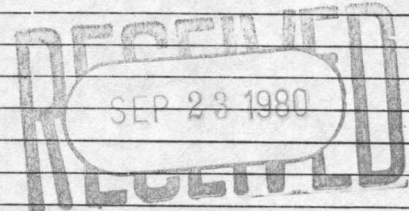
7543

P. O. BOX 1599 PHONE (316) 262-5861

WICHITA, KANSAS 67201

Elevation Formation MarmatonEff. Pay

Ft.

District WakarusaDate 9-20/21-80Customer Order No. COMPANY NAME Don E. Pratt Oil OperationsADDRESS Box 370 Hays, Ks. 67601LEASE AND WELL NO. Gugelman #1-10 COUNTY Trego STATE Ks Sec. 10 Twp. 11S Rge. 22WMail Invoice To Same Co. Name Same Address Same No. Copies Requested 5Mail Charts To Same Co. Name Same Address Same No. Copies Requested 5Formation Test No. 5 Interval Tested from 3660 ft. to 3776 ft. Total Depth 3776 ft.Packer Depth 3655 ft. Size 6 3/4 in. Packer Depth 3660 ft. Size 6 3/4 in.Packer Depth 3660 ft. Size 6 3/4 in. Packer Depth 3660 ft. Size 6 3/4 in.Depth of Selective Zone Set Top Recorder Depth (Inside) 3768 ft. Recorder Number 1564 Cap. 3150Bottom Recorder Depth (Outside) 3771 ft. Recorder Number 2603 Cap. 4400Below Straddle Recorder Depth ✓ ft. Recorder Number ✓ Cap. ✓Drilling Contractor Murphy #21 Drill Collar Length 409 I. D. 2.26 in.Mud Type Starch Viscosity 43 Weight Pipe Length ✓ I. D. ✓ in.Weight 9.4 Water Loss 12.8 cc. Drill Pipe Length 3367 I. D. 3.8 in.Chlorides 47,000 P.P.M. Test Tool Length 19 ft. Tool Size 5 1/2 in.Jars: Make NO Serial Number ✓ Anchor Length 116 ft. Size 5 1/2 in.Did Well Flow? NO Reversed Out NO Surface Choke Size 3/4 in. Bottom Choke Size 3/4 in.Main Hole Size 7 7/8 in. Tool Joint Size 4 1/2 FH in.Blow: Very Weak Blow Died in 7min 1st Open Flushed Tool
NO HelpRecovered 15 ft. of Mud No ShowRecovered ft. of Recovered ft. of Recovered ft. of Recovered ft. of Remarks: Slid Tool 5' To Bottom Before OpenTime On Location 7:30 A.M. Time Pick Up Tool 9:00 A.M. Time Off Location 2:30 A.M.Time Set Packer(s) 10:42 A.M. Time Started Off Bottom 12:15 P.M. Maximum Temperature 117°Initial Hydrostatic Pressure (A) 1992 P.S.I.Initial Flow Period (B) 60 Minutes (C) 85 P.S.I. to (D) 101 P.S.I.Initial Closed In Period (E) 30 Minutes (F) 592 P.S.I.Final Flow Period (G) X Minutes (H) X P.S.I. to (I) X P.S.I.Final Closed In Period (J) Minutes (K) P.S.I.Final Hydrostatic Pressure (L) 1976 P.S.I.

COMPANY TERMS

Western Testing Co., Inc. shall not be liable for damages of any kind to the property or personnel of the one for whom a test is made or for any loss suffered or sustained directly or indirectly through the use of its equipment, of its statements or opinion concerning the results of any test. Tools lost or damaged in the hole shall be paid at cost by the party for whom the test is made.

All charges subject to 12% interest after 60 days from date of invoice. Any expense incurred for collection will be added to the original amount.

Test Approved By Ken Metz
Signature of Customer or his authorized representativeWestern Representative Ken Metz

Thank You!

FIELD INVOICE

Open Hole Test	\$ <u>550.00</u>
Misrun	\$ <u> </u>
Straddle Test	\$ <u> </u>
Jars	\$ <u> </u>
Selective Zone	\$ <u> </u>
Safety Joint	\$ <u> </u>
Standby	\$ <u> </u>
Evaluation	\$ <u> </u>
Extra Packer	\$ <u> </u>
Circ. Sub.	\$ <u> </u>
Mileage	\$ <u> </u>
Fluid Sampler	\$ <u> </u>
Extra Charts	\$ <u> </u>
Insurance	\$ <u> </u>
TOTAL	\$ <u>550.00</u>

WESTERN TESTING CO., INC.

Pressure Data

Date 9-20/21-80

Test Ticket No. 7543

Recorder No. 1564

Capacity 3150

Location 3768 Ft.

Clock No. _____ Elevation _____

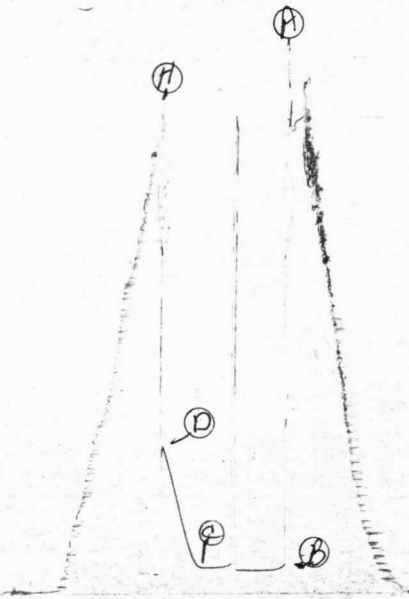
Well Temperature 117 °F

Point	Pressure		Time Given	Time Computed
A Initial Hydrostatic Mud	<u>2000</u> P.S.I.	Open Tool	<u>10:42 P</u>	<u>M</u>
B First Initial Flow Pressure	<u>105</u> P.S.I.	First Flow Pressure	<u>60</u> Mins.	<u>65</u> Mins.
C First Final Flow Pressure	<u>107</u> P.S.I.	Initial Closed-in Pressure	<u>30</u> Mins.	<u>30</u> Mins.
D Initial Closed-in Pressure	<u>594</u> P.S.I.	Second Flow Pressure	_____ Mins.	_____ Mins.
E Second Initial Flow Pressure	_____ P.S.I.	Final Closed-in Pressure	_____ Mins.	_____ Mins.
F Second Final Flow Pressure	_____ P.S.I.			
G Final Closed-in Pressure	_____ P.S.I.			
H Final Hydrostatic Mud	<u>1963</u> P.S.I.			

PRESSURE BREAKDOWN

First Flow Pressure		Initial Shut-In		Second Flow Pressure		Final Shut-In	
Breakdown: <u>13</u> Inc.		Breakdown: <u>10</u> Inc.		Breakdown: _____ Inc.		Breakdown: _____ Inc.	
of <u>5</u> mins. and a final inc. of <u>0</u> Min.		of <u>3</u> mins. and a final inc. of <u>0</u> Min.		of <u>5</u> mins. and a final inc. of <u>0</u> Min.		of <u>3</u> mins. and a final inc. of <u>0</u> Min.	
Point Mins.	Press.	Point Minutes	Press.	Point Minutes	Press.	Point Minutes	Press.
P 1	<u>0</u>	<u>0</u>	<u>105</u>	<u>0</u>	<u>107</u>	<u>0</u>	
P 2	<u>5</u>	<u>3</u>	<u>99</u>	<u>3</u>	<u>118</u>	<u>3</u>	
P 3	<u>10</u>	<u>6</u>	<u>96</u>	<u>6</u>	<u>151</u>	<u>6</u>	
P 4	<u>15</u>	<u>9</u>	<u>95</u>	<u>9</u>	<u>202</u>	<u>9</u>	
P 5	<u>20</u>	<u>12</u>	<u>93</u>	<u>12</u>	<u>260</u>	<u>12</u>	
P 6	<u>25</u>	<u>15</u>	<u>93</u>	<u>15</u>	<u>324</u>	<u>15</u>	
P 7	<u>30</u>	<u>18</u>	<u>93</u>	<u>18</u>	<u>392</u>	<u>18</u>	
P 8	<u>35</u>	<u>21</u>	<u>93</u>	<u>21</u>	<u>459</u>	<u>21</u>	
P 9	<u>40</u>	<u>24</u>	<u>FLUSHED TOOL</u>	<u>24</u>	<u>523</u>	<u>24</u>	
P10	<u>45</u>	<u>27</u>	<u>115</u>	<u>27</u>	<u>586</u>	<u>27</u>	
P11	<u>50</u>	<u>30</u>	<u>109</u>	<u>30</u>	<u>594</u>	<u>30</u>	
P12	<u>55</u>	<u>33</u>	<u>104</u>	<u>33</u>		<u>33</u>	
P13	<u>60</u>	<u>36</u>	<u>105</u>	<u>36</u>		<u>36</u>	
P14	<u>65</u>	<u>39</u>	<u>107</u>	<u>39</u>		<u>39</u>	
P15		<u>42</u>		<u>42</u>		<u>42</u>	
P16		<u>45</u>		<u>45</u>		<u>45</u>	
P17		<u>48</u>		<u>48</u>		<u>48</u>	
P18		<u>51</u>		<u>51</u>		<u>51</u>	
P19		<u>54</u>		<u>54</u>		<u>54</u>	
P20		<u>57</u>		<u>57</u>		<u>57</u>	
		<u>60</u>		<u>60</u>		<u>60</u>	

JK # 7543
I



Company Don E. Pratt Oil Operations Lease & Well No. Gagelman #1-10
 Elevation ----- Formation Marmaton Effective Pay - Ft. Ticket No. 7543
 Date 9/20/21/80 Sec. 10 Twp. 11S Range 22W County Trego State Kansas
 Test Approved by ----- Western Representative Ken Metzler

Formation Test No. 5 Interval Tested from 3660 ft. to 3776 ft. Total Depth 3776 ft.
 Packer Depth 3655 ft. Size 6 3/4 in. Packer Depth - ft. Size - in.
 Packer Depth 3660 ft. Size 6 3/4 in. Packer Depth - ft. Size - in.

Depth of Selective Zone Set -
 Top Recorder Depth (Inside) 3768 ft. Recorder Number 1564 Cap. 3150
 Bottom Recorder Depth (Outside) 3771 ft. Recorder Number 2603 Cap. 4400
 Below Straddle Recorder Depth - ft. Recorder Number - Cap. -

Drilling Contractor Murfin Drilling Rig #21 Drill Collar Length 409 I. D. 2.26 in.
 Mud Type starch Viscosity 43 Weight Pipe Length - I. D. - in.
 Weight 9.4 Water Loss 12.8 cc. Drill Pipe Length 3367 I. D. 3.8 in.
 Chlorides 47,000 P.P.M. Test Tool Length 19 ft. Tool Size 5 1/2 in.
 Jars: Make No Serial Number - Anchor Length 116 ft. Size 5 1/2 in.
 Did Well Flow? No Reversed Out No Surface Choke Size 3/4 in. Bottom Choke Size 3/4 in.
 Main Hole Size 7 7/8 in. Tool Joint Size 4 1/2 FH in.

Blow: Very weak blow; died in seven minutes initial flow period. Flushed tool, no help.

Recovered 15 ft. of mud no show
 Recovered ft. of
 Recovered ft. of
 Recovered ft. of
 Recovered ft. of

Remarks: Slid tool five feet to bottom before opening.

Time Set Packer(s) 10:42 A.M. Time Started Off Bottom 12:15 A.M. Maximum Temperature 117°
P.M. P.M.
 Initial Hydrostatic Pressure (A) 2000 P.S.I.
 Initial Flow Period Minutes 65 (B) 105 P.S.I. to (C) 107 P.S.I.
 Initial Closed In Period Minutes 30 (D) 594 P.S.I.
 Final Flow Period Minutes -- (E) --- P.S.I. to (F) --- P.S.I.
 Final Closed In Period Minutes -- (G) --- P.S.I.
 Final Hydrostatic Pressure (H) 1963 P.S.I.

WESTERN TESTING CO., INC.

Pressure Data

Date 9-20/21-80 Test Ticket No. 7543
 Recorder No. 1564 Capacity 3150 Location 3768 Ft.
 Clock No. ----- Elevation ----- Well Temperature 117 °F

Point	Pressure		Time Given	Time Computed
A Initial Hydrostatic Mud	<u>2000</u>	P.S.I.	<u>10:42 P.M.</u>	
B First Initial Flow Pressure	<u>105</u>	P.S.I.	<u>60 Mins.</u>	<u>65 Mins.</u>
C First Final Flow Pressure	<u>107</u>	P.S.I.	<u>30 Mins.</u>	<u>30 Mins.</u>
D Initial Closed-in Pressure	<u>594</u>	P.S.I.	<u>-- Mins.</u>	<u>-- Mins.</u>
E Second Initial Flow Pressure	<u>----</u>	P.S.I.	<u>-- Mins.</u>	<u>-- Mins.</u>
F Second Final Flow Pressure	<u>----</u>	P.S.I.		
G Final Closed-in Pressure	<u>----</u>	P.S.I.		
H Final Hydrostatic Mud	<u>1963</u>	P.S.I.		

PRESSURE BREAKDOWN

Point Mins.	First Flow Pressure		Initial Shut-In		Second Flow Pressure		Final Shut-In	
	Press.	Point Minutes	Press.	Point Minutes	Press.	Point Minutes	Press.	Point Minutes
P 1 <u>0</u>	<u>105</u>	<u>0</u>	<u>107</u>					
P 2 <u>5</u>	<u>99</u>	<u>3</u>	<u>118</u>					
P 3 <u>10</u>	<u>96</u>	<u>6</u>	<u>151</u>					
P 4 <u>15</u>	<u>95</u>	<u>9</u>	<u>202</u>					
P 5 <u>20</u>	<u>93</u>	<u>12</u>	<u>260</u>					
P 6 <u>25</u>	<u>93</u>	<u>15</u>	<u>324</u>					
P 7 <u>30</u>	<u>93</u>	<u>18</u>	<u>392</u>					
P 8 <u>35</u>	<u>93</u>	<u>21</u>	<u>459</u>					
P 9 <u>40</u>	<u>Flushed Tool</u>	<u>24</u>	<u>523</u>					
P10 <u>45</u>	<u>115</u>	<u>27</u>	<u>586</u>					
P11 <u>50</u>	<u>109</u>	<u>30</u>	<u>594</u>					
P12 <u>55</u>	<u>104</u>							
P13 <u>60</u>	<u>105</u>							
P14 <u>65</u>	<u>107</u>							
P15								
P16								
P17								
P18								
P19								
P20								