

CONFIDENTIAL

MILLER

ORIGINAL

DATE 12-11-77  
SEC. 6 TWN 11S RG 22W  
LEGAL DESCRIPTION SE/SE/SE

TESTING COMPANY  
P. O. BOX 547 PHONE (316) 793-3370  
GREAT BEND, KANSAS

TICKET No 17031  
KCC  
AUG 07 2002 TEST NO. 1

CONFIDENTIAL

COMPANY A. SCOTT RITCHIE  
ADDRESS Suite 950 125 N. MARKET WICHITA, KANS., 67202  
LEASE McCall WELL NO. 1 COUNTY Trego STATE KANS.  
INVOICES SENT TO: SAME  
DST COPIES SENT TO: "

**GENERAL INFORMATION**

TOOL JT. 4 1/2 FH HOLE SIZE 7 7/8 PACKER O.D. 6 3/4  
 ELEV. TOTAL DEPTH 3570'  
 TESTED FROM 3513' TO 3570'  
 ANCHOR LENGTH BELOW 57' BETWEEN ✓  
 TOOL OPEN 1ST FLOW A.M. 7:45 P.M.  
 TOOL CLOSED INITIAL SHUT-IN A.M. 8:15 P.M.  
 TOOL OPEN 2ND FLOW A.M. 9:00 P.M.  
 TOOL CLOSED FINAL SHUT-IN A.M. 9:30 P.M.  
 MUD WT 9.5 VISCOSITY 40 W.L. 9.6 C.C.  
 SP. GRAVITY OIL BOTTOM HOLE TEMPERATURE 105°  
 LENGTH DRILL COLLAR I.D. ✓  
 LENGTH WEIGHT PIPE 694' I.D. 2.76  
 SUCCESSFUL TEST NO. MISRUN NO.  
 CHOKES: TOP 1/2" BOTTOM 1/2"

**PRESSURE DATA & TIME**

	FIELD READINGS	CORRECTED READINGS
INITIAL HYDROSTATIC	1819	1843
INITIAL 1ST FLOW	90	90
FINAL 1ST FLOW	204	236
INITIAL SHUT-IN	1052	1059
INITIAL 2ND FLOW	227	248
FINAL 2ND FLOW	340	315
FINAL SHUT-IN	1030	1030
FINAL HYDROSTATIC	1797	1811
TOOL OPEN: 1ST FLOW	✓ HR.	30 MIN.
INITIAL SHUT-IN	✓ HR.	45 MIN.
2ND FLOW	✓ HR.	30 MIN.
FINAL SHUT-IN	✓ HR.	45 MIN.
TOP RECORDER NO. 2774		BOTTOM RECORDER NO. 905

TYPE BLOW FAIR Blow Throughout Test

RECOVERY: 510' Muddy WATER

RECEIVED  
AUG 08 2002

RELEASED  
FROM  
CONFIDENTIAL

KCC WICHITA

EXTRA EQUIPMENT NONE

APPROVED BY: J. J. Jackson  
 TESTER: Gary Marshall  
 FORMATION TESTED K.C.  
 OPERATOR TIME: ✓

MILLER TESTING COMPANY  
 SHALL NOT BE LIABLE FOR ANY DAMAGE OF ANY KIND TO THE PROPERTY OR PERSONNEL OF THE ONE FOR WHOM A TEST IS MADE, OR FOR ANY LOSS SUFFERED OR SUSTAINED, DIRECTLY OR INDIRECTLY, THROUGH THE USE OF ITS EQUIPMENT, OR ITS STATEMENTS OR OPINION CONCERNING THE RESULTS OF ANY TEST. TOOLS LOST OR DAMAGED IN THE HOLE SHALL BE PAID FOR AT COST BY THE PARTY FOR WHOM THE TEST WAS MADE.

**CHARGES**

TEST CHARGE	\$ 400.00
EXTRA PACKERS	\$
JARS	\$
SAFETY JOINT	\$
HOOK WALL	\$
MISRUN CHARGE	\$
STAND-BY CHARGE	\$
DST EVALUATION	\$
STRADDLE	\$
TOTAL	\$ 400.00

**CONFIDENTIAL**

**MILLER TESTING COMPANY**

**ORIGINAL**

Box 547

**GREAT BEND, KANSAS**

**KCC**

**AUG 07 2002**

Company A. SCOTT RITCHIE

**CONFIDENTIAL**

Lease and Well No. MC CALL #1

County TRAGO

State KANSAS

Date 12-11-77

Formation Test No. 1 Total Depth 3570 Elev. \_\_\_\_\_

Interval Tested 3513 To 3570 Anchor Length 57'

Size Hole 7 7/8 Size Drill Pipe 4 1/2 F H Size Packer 6 3/4

Mud Weight 9.5 Viscosity 40 Water Loss 9.6 c.c. Bottom Hole Temp. 105 °F

Chokes: Top 1/2 Bottom 1/2 Ticket No. 17031

Length of Drill Collar \_\_\_\_\_ I. D. \_\_\_\_\_ Length Flexweight 694 I. D. 2.76

**RECOVERY**

FAIR BLOW THROUGHOUT TEST.

510 FEET OF MUDDY WATER

RELEASED  
FROM  
CONFIDENTIAL

Lease and Well No. MC CALL #1 SE SE SE 6-11S-22W Formation Test No. 1

CONFIDENTIAL

ORIGINAL

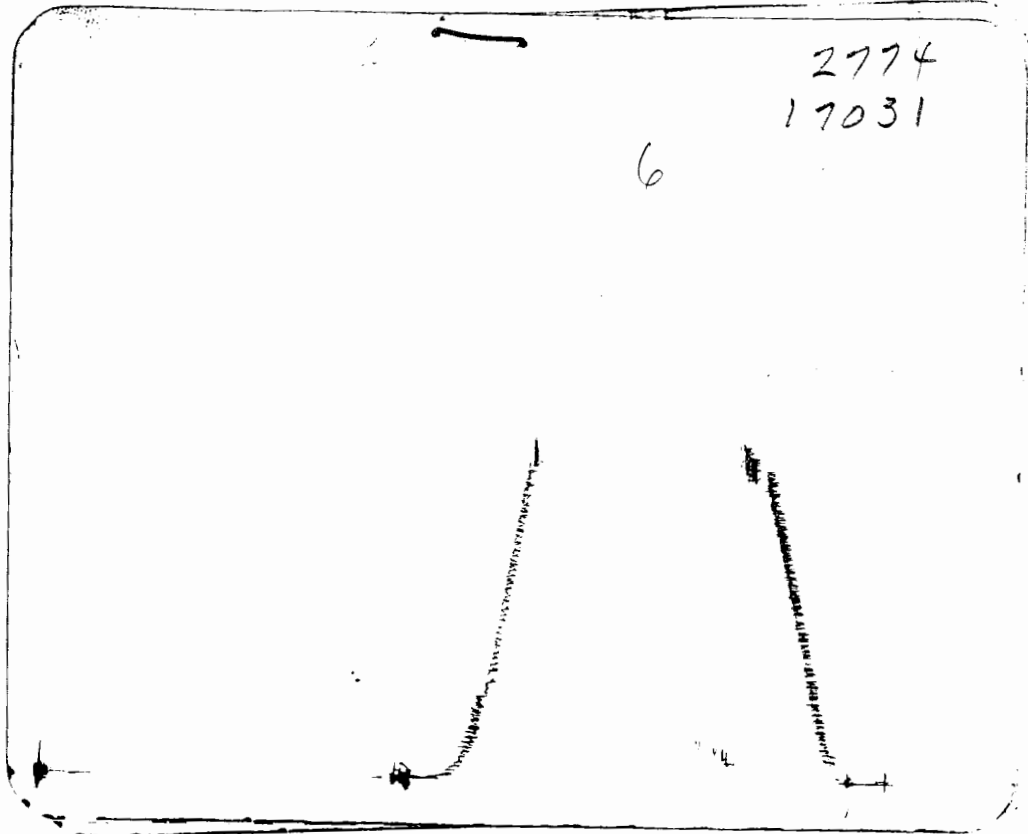
2774  
17031

6

KCC

AUG 07 2002

CONFIDENTIAL



Tool Open: 1st Flow 30 mins: Shut-in Initial 45 min: 2nd Flow 30 min: Shut-in Final 45 min.

	Field Reading	Corrected Reading
(A) Initial Hydrostatic Pressure	<u>1819</u>	<u>1843</u>
(B) Initial 1st Flow Pressure	<u>90</u>	<u>90</u>
(C) Final 1st Flow Pressure	<u>204</u>	<u>236</u>
(D) Initial Shut-in Pressure	<u>1052</u>	<u>1059</u>
(E) Initial 2nd Flow Pressure	<u>227</u>	<u>248</u>
(F) Final 2nd Flow Pressure	<u>340</u>	<u>315</u>
(G) Final Shut-in Pressure	<u>1030</u>	<u>1030</u>
(H) Final Hydrostatic Pressure	<u>1797</u>	<u>1811</u>

RELEASED  
FROM  
CONFIDENTIAL

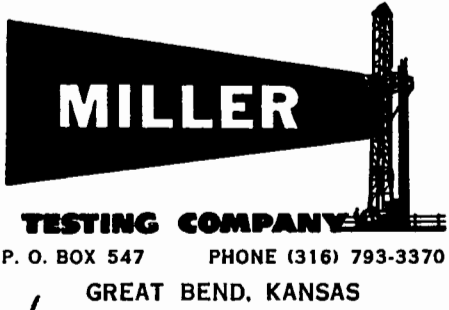
17031

CONFIDENTIAL

DATE 12-12-77

SEC. 6 TWN 11S RG 22W

LEGAL DESCRIPTION SE/SE/SE



ORIGINAL No. 17032

TICKET KCC TEST NO. 2

AUG 07 2002

COMPANY A. Scott Ritchie CONFIDENTIAL
ADDRESS Suite 950 125 N. MARKET WICHITA, KANS.
LEASE McCall WELL NO. 1 COUNTY Trego STATE KANS.
INVOICES SENT TO: SAME
DST COPIES SENT TO: "

RELEASED

Table with columns: GENERAL INFORMATION, FROM CONFIDENTIAL, PRESSURE DATA & TIME. Includes rows for TOOL JT., HOLE SIZE, Packer O.D., ELEV., TOTAL DEPTH, TESTED FROM, TO, ANCHOR LENGTH, TOOL OPEN 1ST FLOW, TOOL CLOSED INITIAL SHUT-IN, TOOL OPEN 2ND FLOW, TOOL CLOSED FINAL SHUT-IN, MUD WT., VISCOSITY, W.L., SP. GRAVITY OIL, BOTTOM HOLE TEMPERATURE, LENGTH DRILL COLLAR, I.D., LENGTH WEIGHT PIPE, I.D., SUCCESSFUL TEST NO., MISRUN NO., CHOKES: TOP, BOTTOM, FIELD READINGS, CORRECTED READINGS, TOOL OPEN: 1ST FLOW, INITIAL SHUT-IN, 2ND FLOW, FINAL SHUT-IN, TOP RECORDER NO., BOTTOM RECORDER NO.

TYPE BLOW Good Blow Throughout Test.

RECOVERY: 300' GAS IN PIPE
10' FREG OIL
240' 60% WTR 8% OIL 32% Mud.
360' 90% WTR 5% OIL 5% Mud.
360' 95% WTR 2% OIL 3% Mud.
180' 99% WTR 1% OIL
1150' Non-Aqueous Fluid

RECEIVED
AUG 08 2002
KCC WICHITA

EXTRA EQUIPMENT
APPROVED BY: Miller Testing Company
TESTER: Gary Marshall
FORMATION TESTED: K.C.
OPERATOR TIME:

HALL NOT BE LIABLE FOR ANY DAMAGE OF ANY KIND TO THE PROPERTY OR PERSONNEL OF THE ONE FOR WHOM A TEST IS MADE. OR FOR ANY LOSS SUFFERED OR SUSTAINED, DIRECTLY OR INDIRECTLY, THROUGH THE USE OF ITS EQUIPMENT, OR ITS STATEMENTS OR OPINION CONCERNING THE RESULTS OF ANY TEST. TOOLS LOST OR DAMAGED IN THE HOLE SHALL BE PAID FOR AT COST BY THE PARTY FOR WHOM THE TEST WAS MADE.

Table with columns: CHARGES, TEST CHARGE, EXTRA PACKERS, JARS, SAFETY JOINT, HOOK WALL, MISRUN CHARGE, STAND-BY CHARGE, DST EVALUATION, STRADDLE, TOTAL. Total charge listed as 400.00.

**CONFIDENTIAL MILLER TESTING COMPANY**

**ORIGINAL**

Box 547

**KCC**

**GREAT BEND, KANSAS**

**AUG 07 2002**

Company A. SCOTT RITCHIE

**CONFIDENTIAL**

Lease and Well No. MC CALL #1

County TREGO

State KANSAS

Date 12-12-77

Formation Test No. 2 Total Depth 3600 Elev. \_\_\_\_\_

Interval Tested 3570 To 3600 Anchor Length 30'

Size Hole 7 7/8 Size Drill Pipe 4 1/2 F H Size Packer 6 3/4

Mud Weight 9.6 Viscosity 43 Water Loss 13.5 c.c. Bottom Hole Temp. 106 °F

Chokes: Top 1/2 Bottom 1/2 Ticket No. 17032

Length of Drill Collar \_\_\_\_\_ I. D. \_\_\_\_\_ Length Flexweight 725 I. D. 2.76

**RECOVERY**

GOOD BLOW THROUGHOUT TEST.

300 FEET OF GAS IN PIPE  
 10 FEET OF FREE OIL  
 240 FEET OF 60% WATER, 8% OIL, 32% MUD  
 360 FEET OF 90% WATER, 5% OIL, 5% MUD  
 360 FEET OF 95% WATER, 2% OIL, 3% MUD  
 180 FEET OF 99% WATER, 1% OIL

RELEASED  
FROM  
CONFIDENTIAL

Lease and Well No. MC CALL #1 SE SE SE 6-11S-22W Formation Test No. 2

CONFIDENTIAL

ORIGINAL

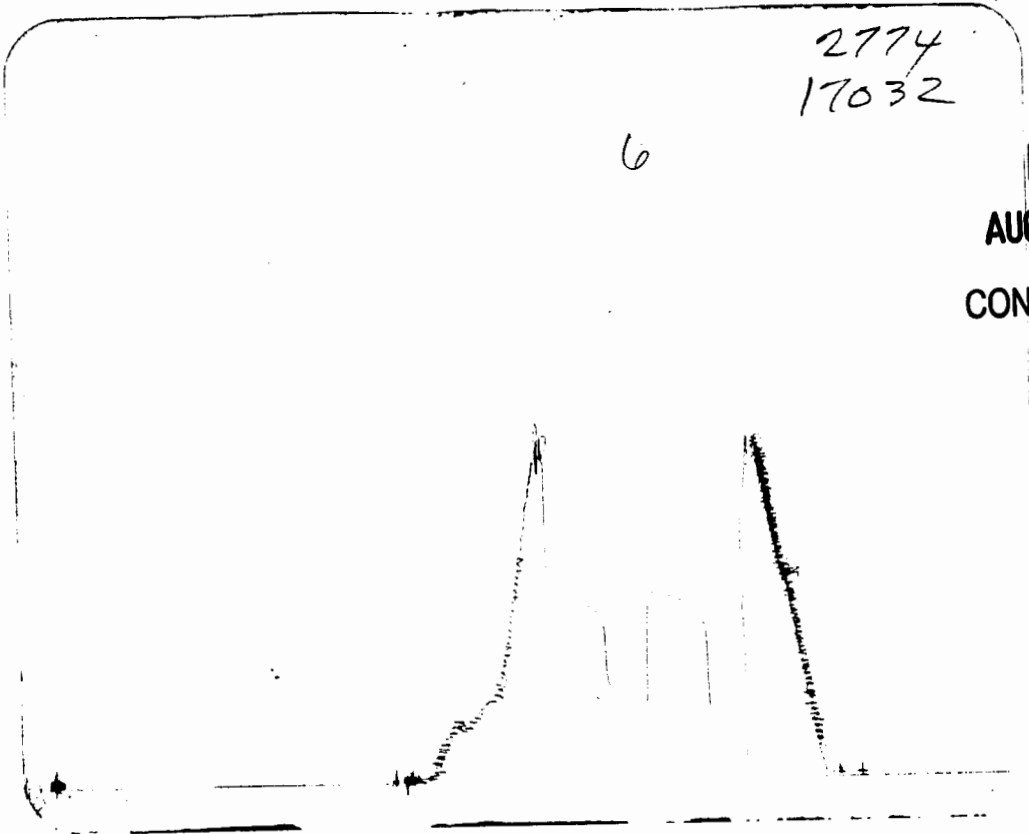
2774  
17032

6

KCC

AUG 07 2002

CONFIDENTIAL



Tool Open: 1st Flow 30 mins: Shut-in Initial 45 min: 2nd Flow 30 min: Shut-in Final 45 min.

	Field Reading	Corrected Reading
(A) Initial Hydrostatic Pressure	<u>1918</u>	<u>1919</u>
(B) Initial 1st Flow Pressure	<u>113</u>	<u>128</u>
(C) Final 1st Flow Pressure	<u>408</u>	<u>383</u>
(D) Initial Shut-in Pressure	<u>1074</u>	<u>1074</u>
(E) Initial 2nd Flow Pressure	<u>454</u>	<u>453</u>
(F) Final 2nd Flow Pressure	<u>555</u>	<u>551</u>
(G) Final Shut-in Pressure	<u>1052</u>	<u>1063</u>
(H) Final Hydrostatic Pressure	<u>1907</u>	<u>1843</u>

RELEASED  
FROM  
CONFIDENTIAL

17032

CONFIDENTIAL

DATE 12-12-77

SEC. 6 TWN 11 S RG 22 W

LEGAL DESCRIPTION SE-SE-SE



TESTING COMPANY  
P. O. BOX 547 PHONE (316) 793-3370  
GREAT BEND, KANSAS

ORIGINAL

TICKET No 17033

KCC

AUG 07 2002 TEST NO. 3

CONFIDENTIAL

COMPANY A. Scott Richie  
ADDRESS Swira 950 125 North Market Wichita KS 67271  
LEASE McCall WELL NO. 1 COUNTY Trego STATE KS  
INVOICES SENT TO: Same  
DST COPIES SENT TO: "

GENERAL INFORMATION				PRESSURE DATA & TIME			
				FIELD READINGS		CORRECTED READINGS	
TOOL JT. <u>4 1/2</u>	HOLE SIZE <u>7 7/8</u>	PACKER O.D. <u>6 3/4</u>		INITIAL HYDROSTATIC	<u>1819</u>	<u>1919</u>	
ELEV. _____	TOTAL DEPTH <u>3600</u>			INITIAL 1ST FLOW	<u>68</u>	<u>29</u>	
TESTED FROM <u>3585</u>	TO <u>3600</u>			FINAL 1ST FLOW	<u>90</u>	<u>52</u>	
ANCHOR LENGTH BELOW <u>15'</u>	BETWEEN _____			INITIAL SHUT-IN	<u>1030</u>	<u>1026</u>	
TOOL OPEN 1ST FLOW _____	A.M. _____	P.M. _____		INITIAL 2ND FLOW	<u>113</u>	<u>92</u>	
TOOL CLOSED INITIAL SHUT-IN _____	A.M. _____	P.M. _____		FINAL 2ND FLOW	<u>113</u>	<u>106</u>	
TOOL OPEN 2ND FLOW _____	A.M. _____	P.M. _____		FINAL SHUT-IN	<u>1008</u>	<u>993</u>	
TOOL CLOSED FINAL SHUT-IN _____	A.M. _____	P.M. _____		FINAL HYDROSTATIC	<u>1797</u>	<u>1822</u>	
MUD WT <u>9.6</u>	VISCOSITY <u>43</u>	W.L. <u>135</u>	C.C. _____	TOOL OPEN: 1ST FLOW	<input checked="" type="checkbox"/>	HR. <u>30</u>	MIN. _____
SP. GRAVITY OIL _____	BOTTOM HOLE TEMPERATURE _____			INITIAL SHUT-IN	<input checked="" type="checkbox"/>	HR. <u>45</u>	MIN. _____
LENGTH DRILL COLLAR <u>✓</u>	I.D. <u>✓</u>			2ND FLOW	<input checked="" type="checkbox"/>	HR. <u>30</u>	MIN. _____
LENGTH WEIGHT PIPE <u>725</u>	I.D. <u>2.76</u>			FINAL SHUT-IN	<input checked="" type="checkbox"/>	HR. <u>45</u>	MIN. _____
SUCCESSFUL TEST NO. <u>3</u>	MISRUN NO. _____			TOP RECORDER NO. <u>2774</u>	BOTTOM RECORDER NO. <u>905</u>		
CHOKES: TOP <u>1/2</u>	BOTTOM <u>1/2</u>						

TYPE BLOW Good flow through Both Openings

RECOVERY: 139' Oil - 97% Oil - 37% WTR  
62' HOCm - 70% Oil - 47% WTR - 267% mud

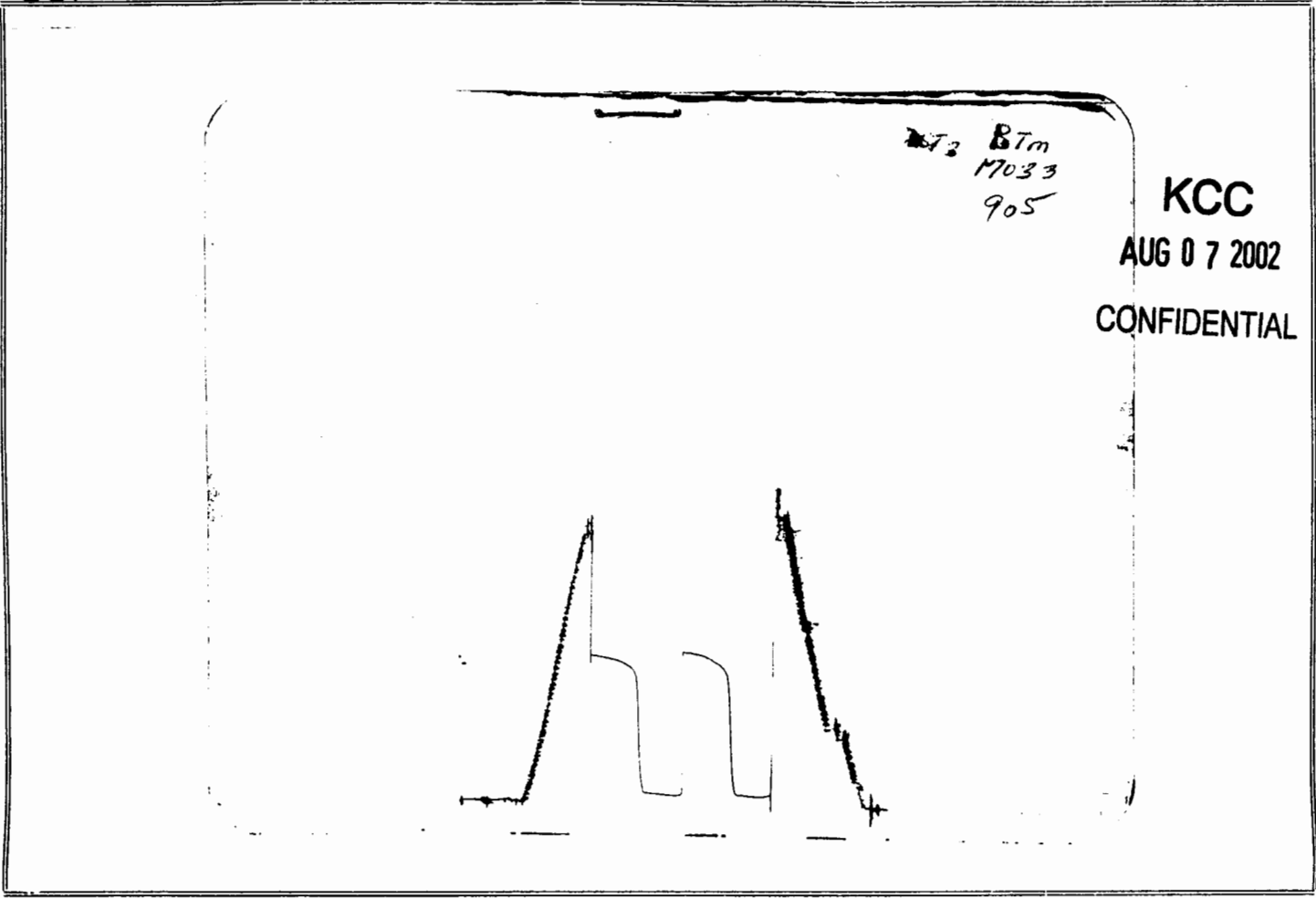
RECEIVED  
AUG 08 2002  
KCC WICHITA

RELEASED  
FROM  
CONFIDENTIAL

EXTRA EQUIPMENT NONE  
APPROVED BY: F. Judson Zipp  
TESTER: Larry D Taylor  
FORMATION TESTED K.C.  
OPERATOR TIME: None Thank you

MILLER TESTING COMPANY  
SHALL NOT BE LIABLE FOR ANY DAMAGE OF ANY KIND TO THE PROPERTY OR PERSONNEL OF THE ONE FOR WHOM A TEST IS MADE, OR FOR ANY LOSS SUFFERED OR SUSTAINED, DIRECTLY OR INDIRECTLY, THROUGH THE USE OF ITS EQUIPMENT, OR ITS STATEMENTS OR OPINION CONCERNING THE RESULTS OF ANY TEST. TOOLS LOST OR DAMAGED IN THE HOLE SHALL BE PAID FOR AT COST BY THE PARTY FOR WHOM THE TEST WAS MADE.

CHARGES	
TEST CHARGE	\$ <u>400.00</u>
EXTRA PACKERS	\$ _____
JARS	\$ _____
SAFETY JOINT	\$ _____
HOOK WALL	\$ _____
MISRUN CHARGE	\$ _____
STAND-BY CHARGE	\$ _____
DST EVALUATION	\$ _____
STRADDLE	\$ _____
TOTAL	\$ <u>400.00</u>



Tool Open: 1st Flow 30 mins: Shut-in Initial 45 min: 2nd Flow 30 min: Shut-in Final 45 min.

	Field Reading	Corrected Reading
(A) Initial Hydrostatic Pressure	<u>1819</u>	<u>1919</u>
(B) Initial 1st Flow Pressure	<u>68</u>	<u>29</u>
(C) Final 1st Flow Pressure	<u>90</u>	<u>52</u>
(D) Initial Shut-in Pressure	<u>1030</u>	<u>1026</u>
(E) Initial 2nd Flow Pressure	<u>113</u>	<u>92</u>
(F) Final 2nd Flow Pressure	<u>113</u>	<u>106</u>
(G) Final Shut-in Pressure	<u>1008</u>	<u>993</u>
(H) Final Hydrostatic Pressure	<u>1797</u>	<u>1822</u>

RELEASED  
FROM  
CONFIDENTIAL

17033

ORIGINAL

CONFIDENTIAL

MILLER TESTING COMPANY

Box 547

GREAT BEND, KANSAS

KCC

AUG 07 2002

Company A. SCOTT RITCHIE CONFIDENTIAL

Lease and Well No. MC CALL #1

County TREGO State KANSAS Date 12-12-77

Formation Test No. 3 Total Depth 3600 Elev. \_\_\_\_\_

Interval Tested 3585 To 3600 Anchor Length 15'

Size Hole 7 7/8 Size Drill Pipe 4 1/2 F H Size Packer 6 3/4

Mud Weight 9.6 Viscosity 43 Water Loss 13.5 c.c. Bottom Hole Temp. \_\_\_\_\_ °F

Chokes: Top 1/2 Bottom 1/2 Ticket No. 17033

Length of Drill Collar \_\_\_\_\_ I. D. \_\_\_\_\_ Length Flexweight 725 I. D. 2.76

RECOVERY

GOOD BLOW THROUGHOUT BOTH OPENINGS

139 FEET OF OIL 97% OIL 37% WATER  
62 FEET OF HEAVY OIL CUT MUD 70% OIL 47% WATER 267% MUD

RELEASED  
FROM  
CONFIDENTIAL

Lease and Well No. MC CALL #1 SE SE SE 6-11S-22W Formation Test No. 3

CONFIDENTIAL

ORIGINAL

DATE 12-13-77



TICKET No 17034

SEC. 6 TWN 11 S RG 22 W

LEGAL DESCRIPTION SE SE SE

P. O. BOX 547 PHONE (316) 793-3370 GREAT BEND, KANSAS

KCC TEST NO. 4

AUG 07 2002

CONFIDENTIAL

COMPANY A. Scott Richie  
ADDRESS Swire 950 125 North Market Wichita KS 67202  
LEASE Mc Call WELL NO. 1 COUNTY Trego STATE KS  
INVOICES SENT TO: Same  
DST COPIES SENT TO: "

GENERAL INFORMATION				PRESSURE DATA & TIME			
TOOL JT. 4 1/2	HOLE SIZE 7 7/8	PACKER O.D. 1 3/4		FIELD READINGS		CORRECTED READINGS	
ELEV. _____	TOTAL DEPTH 3615			INITIAL HYDROSTATIC 1885		1887	
TESTED FROM 3598	TO 3615			INITIAL 1ST FLOW 45		45	
ANCHOR LENGTH BELOW 17'	BETWEEN _____			FINAL 1ST FLOW 227		236	
TOOL OPEN 1ST FLOW 6:55	A.M. _____	P.M. _____		INITIAL SHUT-IN 964		953	
TOOL CLOSED INITIAL SHUT-IN 7:25	A.M. _____	P.M. _____		INITIAL 2ND FLOW 295		315	
TOOL OPEN 2ND FLOW 8:10	A.M. _____	P.M. _____		FINAL 2ND FLOW 386		405	
TOOL CLOSED FINAL SHUT-IN 8:40	A.M. _____	P.M. _____		FINAL SHUT-IN 920		942	
MUD WT 96	VISCOSITY 47	W.L. _____	C.C. _____	FINAL HYDROSTATIC 1775		1778	
SP. GRAVITY OIL _____	BOTTOM HOLE TEMPERATURE _____			TOOL OPEN: 1ST FLOW	✓	HR. 30	MIN.
LENGTH DRILL COLLAR _____	I.D. _____			INITIAL SHUT-IN	✓	HR. 45	MIN.
LENGTH WEIGHT PIPE 725	I.D. 2.76			2ND FLOW	✓	HR. 30	MIN.
SUCCESSFUL TEST NO. 4	MISRUN NO. _____			FINAL SHUT-IN	✓	HR. 45	MIN.
CHOKES: TOP 1/2	BOTTOM 1/2			TOP RECORDER NO. 2774		BOTTOM RECORDER NO. 905	

TYPE BLOW Good flow of Brn of BK in 9min.

RECOVERY: 890' muddy salt w/ slight trace of oil

RECEIVED  
AUG 08 2002  
KCC WICHITA

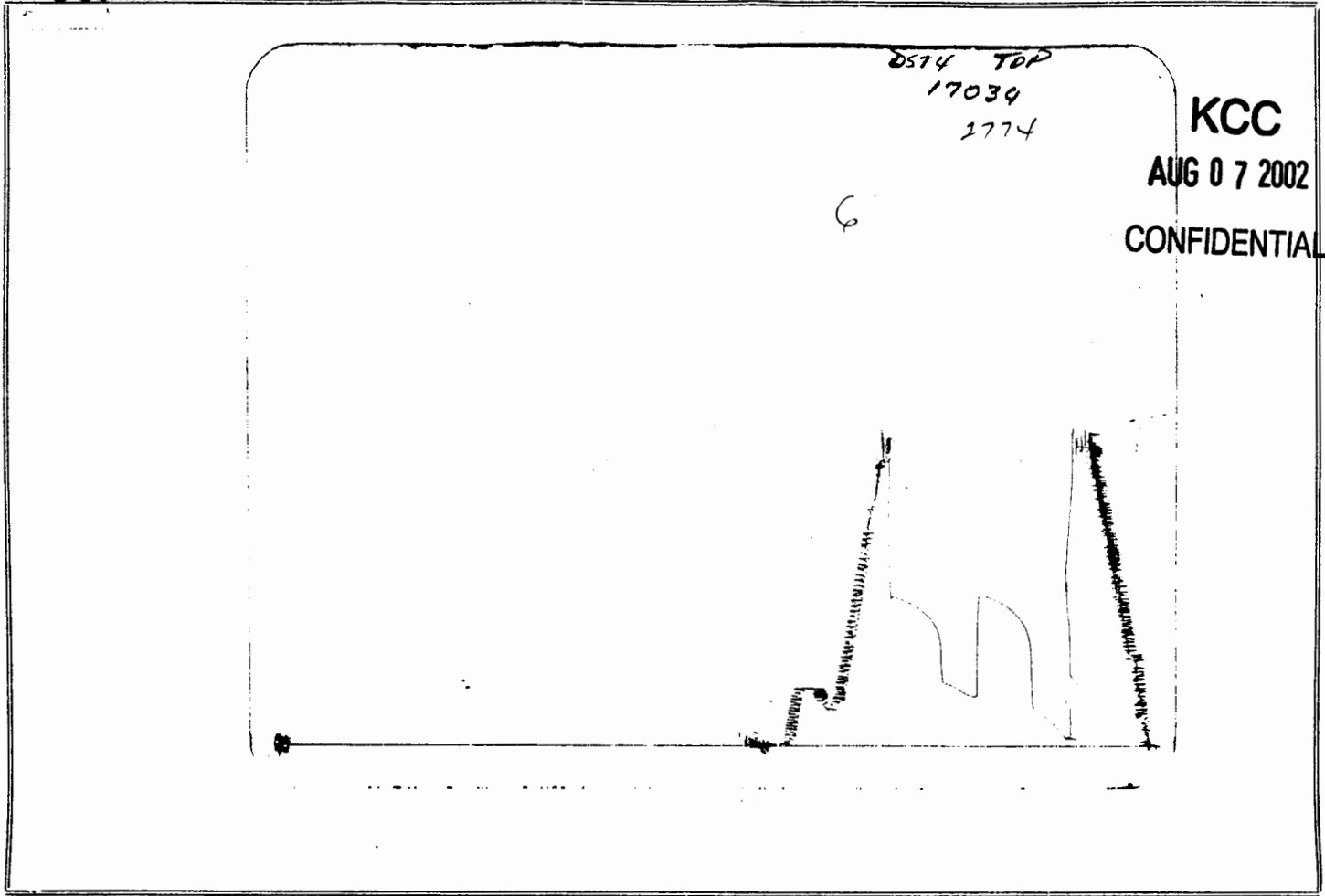
RELEASED FROM

CONFIDENTIAL

EXTRA EQUIPMENT None  
APPROVED BY: Jackson Hippo  
TESTER: Larry D Taylor  
FORMATION TESTED KC.  
OPERATOR TIME: None  
THANK YOU

MILLER TESTING COMPANY  
SHALL NOT BE LIABLE FOR ANY DAMAGE OF ANY KIND TO THE PROPERTY OR PERSONNEL OF THE ONE FOR WHOM A TEST IS MADE, OR FOR ANY LOSS SUFFERED OR SUSTAINED, DIRECTLY OR INDIRECTLY, THROUGH THE USE OF ITS EQUIPMENT, OR ITS STATEMENTS OR OPINION CONCERNING THE RESULTS OF ANY TEST. TOOLS LOST OR DAMAGED IN THE HOLE SHALL BE PAID FOR AT COST BY THE PARTY FOR WHOM THE TEST WAS MADE.

CHARGES	
TEST CHARGE	\$ 400.00
EXTRA PACKERS	\$
JARS	\$
SAFETY JOINT	\$
HOOK WALL	\$
MISRUN CHARGE	\$
STAND-BY CHARGE	\$
DST EVALUATION	\$
STRADDLE	\$
TOTAL	\$ 400.00



Tool Open: 1st Flow      hr. 30 mins: Shut-in Initial      hr. 45 min: 2nd Flow      hr. 30 min: Shut-in Final      hr. 45 min.

	Field Reading	Corrected Reading
(A) Initial Hydrostatic Pressure	<u>1885</u>	<u>1887</u>
(B) Initial 1st Flow Pressure	<u>45</u>	<u>45</u>
(C) Final 1st Flow Pressure	<u>227</u>	<u>236</u>
(D) Initial Shut-in Pressure	<u>964</u>	<u>953</u>
(E) Initial 2nd Flow Pressure	<u>295</u>	<u>315</u>
(F) Final 2nd Flow Pressure	<u>386</u>	<u>405</u>
(G) Final Shut-in Pressure	<u>920</u>	<u>942</u>
(H) Final Hydrostatic Pressure	<u>1775</u>	<u>1778</u>

RELEASED  
FROM  
CONFIDENTIAL

17034

CONFIDENTIAL

MILLER TESTING COMPANY

Box 547

GREAT BEND, KANSAS

KCC

AUG 07 2002

ORIGINAL

CONFIDENTIAL

Company A. SCOTT RITCHIE

Lease and Well No. MC CALL #1

County TREGO State KANSAS Date 12-13-77

Formation Test No. 4 Total Depth 3615 Elev. \_\_\_\_\_

Interval Tested 3598 To 3615 Anchor Length 17'

Size Hole 7 7/8 Size Drill Pipe 4 1/2 Size Packer 6 3/4

Mud Weight 96 Viscosity 47 Water Loss \_\_\_\_\_ c.c. Bottom Hole Temp. \_\_\_\_\_ °F

Chokes: Top 1/2 Bottom 1/2 Ticket No. 17034

Length of Drill Collar \_\_\_\_\_ I. D. \_\_\_\_\_ Length Flexweight 725 I. D. 2.76

RECOVERY

GOOD BLOW IN 9 MINUTES.

890 FEET OF MUDDY SALT WATER SLIGHT TRACE OF OIL

RELEASED  
FROM  
CONFIDENTIAL

Lease and Well No. MC CALL #1

SE SE SE  
6-115-22W

Formation Test No. 4

CONFIDENTIAL

DATE 12-14-77

SEC. 6 TWN 11 S RG 22 W

LEGAL DESCRIPTION SE SE SE



P. O. BOX 547 PHONE (316) 793-3370

GREAT BEND, KANSAS

ORIGINAL

TICKET KCC No 17035

AUG 07 2002 TEST NO. 5

CONFIDENTIAL

COMPANY A. Scott Richie
ADDRESS Suite 950 125 North Market Wichita KS 67202
LEASE McCall WELL NO. 1 COUNTY Trego STATE KS
INVOICES SENT TO: Same
DST COPIES SENT TO: "

Table with 2 main columns: GENERAL INFORMATION and PRESSURE DATA & TIME. Includes fields for tool joints, hole size, packer O.D., elevations, depths, flow rates, and hydrostatic pressures.

TYPE BLOW 1st Opening - Very Weak Blow Died in 5 min.
2nd Opening - Very Weak Blow - Died in 1 min. Flused Tool
RECOVERY: Got a Good Surge.

10' of Drilq Mud with a Few Oil Specks.

RECEIVED
AUG 08 2002
KCC WICHITA

EXTRA EQUIPMENT NONE
APPROVED BY: [Signature]
TESTER: Larry D Taylor
FORMATION TESTED Arbuckle
OPERATOR TIME: NONE
MILLER TESTING COMPANY

SHALL NOT BE LIABLE FOR ANY DAMAGE OF ANY KIND TO THE PROPERTY OR PERSONNEL OF THE ONE FOR WHOM A TEST IS MADE...

Table with 2 columns: CHARGES and Amount. Includes items like TEST CHARGE, EXTRA PACKERS, SAFETY JOINT, HOOK WALL, MISRUN CHARGE, STAND-BY CHARGE, DST EVALUATION, STRADDLE, and TOTAL.

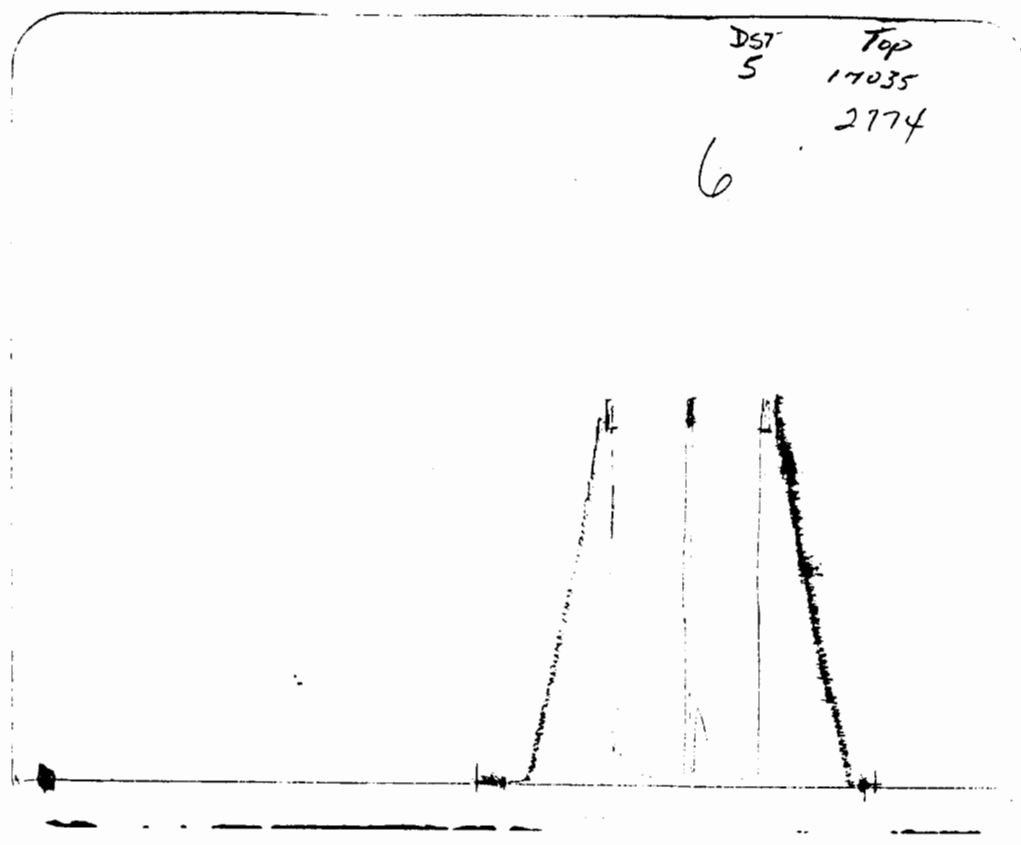
KCC

AUG 07 2002

CONFIDENTIAL

DST 5 Top 17035 2774

6



Tool Open: 1st Flow      hr. 20 mins: Shut-in Initial      hr. 30 min: 2nd Flow      hr. 20 min: Shut-in Final      hr. 30 min.

	Field Reading	Corrected Reading
(A) Initial Hydrostatic Pressure	<u>2039</u>	<u>2114</u>
(B) Initial 1st Flow Pressure	<u>68</u>	<u>45</u>
(C) Final 1st Flow Pressure	<u>68</u>	<u>45</u>
(D) Initial Shut-in Pressure	<u>454</u>	<u>455</u>
(E) Initial 2nd Flow Pressure	<u>68</u>	<u>50</u>
(F) Final 2nd Flow Pressure	<u>90</u>	<u>50</u>
(G) Final Shut-in Pressure	<u>249</u>	<u>252</u>
(H) Final Hydrostatic Pressure	<u>2017</u>	<u>2071</u>

RELEASED FROM CONFIDENTIAL

17035

CONFIDENTIAL

MILLER TESTING COMPANY

Box 547

GREAT BEND, KANSAS

ORIGINAL

KCC

AUG 07 2002

Company A. SCOTT RITCHIE

CONFIDENTIAL

Lease and Well No. MC CALL #1

County TREGO

State KANSAS

Date 12-14-77

Formation Test No. 5 Total Depth 3950 Elev. \_\_\_\_\_

Interval Tested 3934 To 3950 Anchor Length 16'

Size Hole 7 7/8 Size Drill Pipe 4 1/2 F H Size Packer 6 3/4

Mud Weight 9.6 Viscosity 48 Water Loss \_\_\_\_\_ c.c. Bottom Hole Temp. 108 °F

Chokes: Top 1/2 Bottom 1/2 Ticket No. 17035

Length of Drill Collar \_\_\_\_\_ I. D. \_\_\_\_\_ Length Flexweight 725 I. D. 2.76

RECOVERY

FIRST OPENING - VERY WEAK BLOW DIED IN 5 MINUTES.  
SECOND OPENING - VERY WEAK BLOW DIED IN 1 MINUTE. FLUSHED  
TOOL GOT A GOOD SURGE.

10 FEET OF DRILLING MUD WITH A FEW OIL SPECKS

RELEASED  
FROM  
CONFIDENTIAL

Lease and Well No. MC CALL #1

SE SE SE

6-11S-22W

Formation Test No. \_\_\_\_\_

5