

Request samples on this well.

COPY

KANSAS DRILLERS LOG

S. 15 T. 11 R. 22 ^N/_W

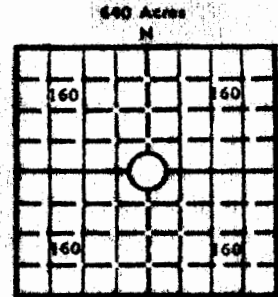
API No. 15 — 195 — 20,568
County Number

Loc. SW NW SE

Operator
F & M Oil Co., Inc.

County Trego

Address
505 Union Center Wichita, Kansas 67202



Well No. #1 Lease Name **Gagelman**

Footage Location
650 feet from ~~XX~~ (S) line 330 feet from ~~XX~~ (W) line

Principal Contractor **Abercrombie Drilling** Geologist **Neil Sikes**

Spud Date **August 7, 1979** Total Depth **3888** P.S.T.D. **3483**

Date Completed **September 8, 1979** Oil Purchaser **Cities Service**

Lease well correctly
Rev.: Gr. **2174**
SR **2179**

CASING RECORD

Report of all strings set— surface, intermediate, production, etc.

Purpose of string	Size hole drilled	Size casing set (in O.D.)	Weight lbs./ft.	Setting depth	Type cement	Secks	Type and percent additives
surface	12 1/4'	8-5/8"	20 [#]	240'	common	70	2% gel, 3% Ca. CI
production		4 1/4"	9 1/2 [#]	3884	posmix	225	10% gel, 10 ex sa fl
			FO top @ 1850' w/ 360 ssc				

LINER RECORD

PERFORATION RECORD

Top, ft.	Bottom, ft.	Secks cement	Shots per ft.	Shot ID type	Depth Interval
			2		3538 3537-41'
			2		3495 3493-96'
			2		3453 3450-56'

ACID, FRACTURE, SHOT, CEMENT SQUEEZE RECORD

Amount and kind of material used	Depth Interval treated
3000 gal 15% acid	3538, 3495, 3453
	RELEASED
	JUL 24 1991

INITIAL PRODUCTION

FROM CONFIDENTIAL

Date of first production September 13, 1979	Producing method (flowing, pumping, gas lift, etc.) pumping
RATE OF PRODUCTION PER 24 HOURS Oil 160 bbls. Gas 00 MCF Water 00 bbls.	One-oil retile RECEIVED CFPB
Disposition of gas (vented, used on lease or sold)	Producing Interval (STATE OF KANSAS) LANS. STATE OF KANSAS COMMISSION

INSTRUCTIONS: As provided in KCC Rule 82-2-125, within 90 days after completion of a well, one completed copy of this Drillers Log shall be transmitted to the State Geological Survey of Kansas, 4150 Monroe Street, Wichita, Kansas 67209. Copies of this form are available from the Conservation Division, State Corporation Commission, 3830 So. Meridian (P.O. Box 17027), Wichita, Kansas 66217. Phone AC 316-522-2206. If a copy of this log is desired, please note Rule 82-2-125. Drillers Logs will be on open file in the Oil and Gas Division, State Geological Survey of Kansas, 66044.

FEB 22 1990

Operator
F & M Oil Co., Inc.

SIGNATURE TYPE OF COMP.: OIL, GAS,
/ HOLE, SWDW, ETC.:
oil well

Well No. Lease Name
Gagelman

S 15 T 115 R 22W
W

WELL LOG

Show all important zones of porosity and contents thereof; cored intervals, and all drill-stem tests, including depth interval tested, cushion used, time tool open, flowing and shut-in pressures, and recoveries.

SHOW GEOLOGICAL MARKERS, LOGS RUN,
OR OTHER DESCRIPTIVE INFORMATION.

FORMATION DESCRIPTION, CONTENTS, ETC.	TOP	BOTTOM	NAME	DEPTH
DST #1 3442-62 30-45-30-45, gd blow T/O rec. 600' GIP, 35' O&GCM, 95' HO&GCM, 150' VSL.MCO. FP's 36-110, SIP's 1157-1136			Sample Tops: Anhydrite	1636 (+ 54)
			B/Anhydrite	1679 (+ 50)
			Heebner	3413 (-123)
			Toronto	3436 (-125)
			Lansing	3452 (-127)
			B/KC	3687 (-150)
			Marmaton	3770 (-159)
			Arbuckle	3873 (-169)
DST #2 3480-3500 30-45-60-45. gd. blow red. 240' GIP, 120' HO&GCM, 510' VSL.MCO, FP's 51-229, SIP's 1114-1071			Electric Log Tops: Anhydrite	1633 (+ 54)
			Heebner	3411 (-123)
			Toronto	3435 (-125)
			Lansing	3450 (-127)
			B/KC	3654 (-150)
			Marmaton Chert	3765 (-158)
			Conglomerate Ch.	3830 (-165)
			Arbuckle	3858 (-167)
DST #3 3506-20 25-20-20-20 wk. 17" blow, & died, rec. 100' mud, FP's 29-73, SIP's 73-73				
DST #4 3519-46 30-45-60-45. wk to fr. blow rec. 600' GIP, 60' O&GCM, 60' HO&GCM, 330' FP's 44-184, SIP's 1100-1063				
DST #5 3548-64 wk. 15" blow. rec. 90' MW s 36-59, SIP's 1100-1078, 20-20-20-20				
DST #6 3578-3619, 20-20-20-20. Wk 18" blow rec. 50' Mw/SO, gd. show on tool. FP's 44-51 SIP's 1276-1264				
DST #7 3623-60 20-20-20-20. Wk. 15" blow. Rec. 70' MW, FP's 51-73, SIP's 1288-1266	0 90 1148 1390 1636 1679 3190	90 1148 1390 1636 1679 3190 3888	Sandstone Sand and shale Sand Shale and sand Anhydrite Shale and lime Lime	
DST #8 3768-90 20-20-20-20. Wk. 15" blow. Rec. 30' OCM. FP's 29-39, SIP's 73-51				
DST #9 3858-81 20-20-20-20. Rec. 10' OCM, 30' HO&GCM. FP's 36-51, SIP's 940-845				
DST #10 3787-3888 30-30-30-30. Str. blow Rec. 2700' water. FP's 364-1208, SIP's 1208-1208				

RELEASED
JUL 24 1991
FROM CONFIDENTIAL

USE ADDITIONAL SHEETS, IF NECESSARY, TO COMPLETE WELL RECORD.

Date Received

Signature
President
September 14, 1979
Date

RECEIVED
STATE COMMISSION
FEB 22 1990

15-195-20568
15-11-22W

WICHITA BRANCH

CONTRACTOR'S WELL LOG

OPERATOR:	F & M Oil Company
CONTRACTOR:	Abercrombie Drilling, Inc.
WELL NAME:	Gagelman #1
LOCATION:	SW NW SE, Section 15-11S-22W Trego County, Kansas
SPUD DATE:	August 07, 1979
COMPLETION DATE:	August 18, 1979

0	90	Sandstone
90	1148	Sand and shale
1148	1390	Sand
1390	1636	Shale and sand
1636	1679	Anhydrite
1679	3190	Shale and lime
3190	3888	Lime
	3888	Rotary Total Depth

Spud hole at 1:15 p.m., August 07, 1979. Drilled 243' of 12 $\frac{1}{4}$ " hole. Ran 6 joints of 8-5/8" new 20# casing. Set at 240' K.B. with 170 sacks of common cement, 3% Ca.Cl., 2% gel. Cement did circulate. Pumped the plug to 220' K.B. Plug was down at 8:15 p.m., August 07, 1979.

T.D. 3888'. Ran 98 joints of 4 $\frac{1}{2}$ " - 9 $\frac{1}{2}$ # new casing. Set at 3884', 1' off bottom. Cemented with 225 sacks of 60/40 poemix, 10% gel., 10 sacks of salt flush. Plug was down at 11:00 p.m., August 18, 1979.


SAMPLE TOPS:

Anhydrite 1636'
B/Anhydrite 1679'

STATE OF KANSAS)
) ss
COUNTY OF SEDGWICK)

Jerry A. Langrehr, Executive Vice-President of Abercrombie Drilling, Inc. does hereby state that the above and foregoing is a true and correct copy of the log of the GAGELMAN #1, SW NW SE, Section 15-11S-22W, Trego County, Kansas.

ABERCROMBIE DRILLING, INC.

BY 
Jerry A. Langrehr