

4/11/87  
KCC

**RELEASED**  
Date: **MAY 1 1987**  
STATE CORPORATION COMMISSION OF KANSAS  
FROM **CONFIDENTIAL**  
OIL & GAS CONSERVATION DIVISION

SIDE ONE

WELL COMPLETION OR RECOMPLETION FORM  
ACO-1 WELL HISTORY

DESCRIPTION OF WELL AND LEASE

Operator: License # **7875**  
Name **Strata Energy Resources Corporation**  
Address **4101 Birch St., Suite 130**  
City/State/Zip **Newport Beach, California 92660**  
Purchaser **Clear Creek**  
**Wichita**  
Operator Contact Person **Raymond A. Diaz**  
Phone **714-261-8181**  
Contractor: License # **5302**  
Name **Red Tiger Drilling Company**  
Wellsite Geologist **Goolsby Brothers**  
Phone .....

**CONFIDENTIAL**

Designate Type of Completion  
 New Well     Re-Entry     Workover  
 Oil     SWD     Temp Abd  
 Gas     Inj     Delayed Comp.  
 Dry     Other (Core, Water Supply etc.)

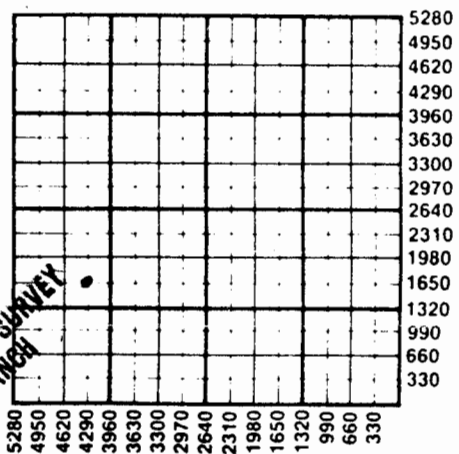
If OWWO: old well info as follows:  
Operator .....,  
Well Name .....,  
Comp. Date ....., Old Total Depth.....

WELL HISTORY

Drilling Method:  
 Mud Rotary     Air Rotary     Cable  
11/18/85    11/25/85    1/22/86  
.....  
Spud Date    Date Reached TD    Completion Date  
3,950'  
.....  
Total Depth    PBDT  
Amount of Surface Pipe Set and Cemented at .....feet  
Multiple Stage Cementing Collar Used?  Yes  No  
If yes, show depth set.....feet  
If alternate 2 completion, cement circulated  
from **3950** feet depth to **Surface** .....SX cmt

API NO. 15-**195-21,822**  
County **Trego**  
SE/4 NW/4 SW/4 Sec. **23** Twp. **11S** Rge. **22W**  East  West  
**1650** Ft North from Southeast Corner of Section  
**4290** Ft West from Southeast Corner of Section  
(Note: Locate well in section plat below)  
Lease Name **Hillman** Well # **6**  
Field Name **New GAGELMAN, SO**  
Producing Formation **Marmaton**  
Elevation: Ground **2249** KB **2254**

Section Plat



**JUL 1 1986**  
KANSAS GEOLOGICAL SURVEY  
WICHITA BRANCH

WATER SUPPLY INFORMATION

Disposition of Produced Water:  Disposal  
Docket # .....  Repressuring

Questions on this portion of the ACO-1 call:  
Water Resources Board (913) 296-3717

Source of Water:  
Division of Water Resources Permit #.....  
 Groundwater.....Ft North from Southeast Corner  
(Well) .....Ft West from Southeast Corner of  
Sec Twp Rge  East  West  
 Surface Water **4500** Ft North from Southeast Corner  
(Stream, pond etc) **2500** Ft West from Southeast Corner  
Sec **23** Twp **11S** Rge **22**  East  West  
**Ethel Hillman, Wakeney, Ks. 67672**  
 Other (explain).....  
(purchased from city, R.W.D. #)

INSTRUCTIONS: This form shall be completed in duplicate and filed with the Kansas Corporation Commission, 200 Colorado Derby Building, Wichita, Kansas 67202, within 90 days after completion or recompletion of any well. Rule 82-3-130 and 82-3-107 apply.  
Information on side two of this form will be held confidential for a period of 12 months if requested in writing and submitted with the form. See rule 82-3-107 for confidentiality in excess of 12 months.  
One copy of all wireline logs and drillers time log shall be attached with this form. Submit CP-4 form with

95129

SIDE TWO

Operator Name **Strata Energy Resources Corporation** Lease Name **Hillman** Well # **6**

Sec. **23** Twp. **11S** Rge. **22W**  East  West County **Trego**

Date of First Production **11/28/86** Producing Method  Flowing  Pumping  Gas Lift  Other (explain).....

Estimated Production Per 24 Hours	Oil	Gas	Water	Gas-Oil Ratio	Gravity
	30		5		38
	Bbls	MCF	Bbls	CFPB	

Drill Stem Tests Taken  Yes  No  
 Samples Sent to Geological Survey  Yes  No  
 Cores Taken  Yes  No

Formation Description  
 Log  Sample

DST # 1 3857-3876  
 45-45-45-45  
 IH 2111 FH 2107 IF 61 - 89  
 FF 123 - 132 IC 947 FC 846

Name	Top	Bottom
Anhydrite	1698	1748
Base Anhydrite	1748	3287
Topeka	3287	3498
Heebner	3498	3523
Toronto	3523	3638
Lansing	3638	3769
BKC	3769	3850
Marmaton	3850	3885
Conglomerate	3885	3950 TD

Recovery:  
 300 Ft. of Gas Above Fluid  
 120 Ft. Heavily Oil & Gas Cut Mud  
 120 Ft. Gassy Muddy Oil  
 60 Ft. Clean Oil

Temperature 119°F.

METHOD OF COMPLETION

Production Interval

Disposition of gas:  Vented  Open Hole  Perforation  
 Sold  Other (Specify) .....  
 Used on Lease  Dually Completed  
 closed in  Comminated

...3858.....  
 3868.....

CASING RECORD  New  Used  
 Report all strings set-conductor, surface, intermediate, production, etc.

Purpose of String	Size Hole Drilled	Size Casing Set (in O.D.)	Weight Lbs/Ft.	Setting Depth	Type of Cement	#Sacks Used	Type and Percent Additives
Surface	12 1/4"	8 5/8"	20#	259.86'	Common	170	2% Gel 3% CC
Production	7 7/8"	4 1/2"	9.5#	3,946'	65/35 Poz	290	10% Gel 2% Econolite
					Common	150	2% Gel 10% Salt
					75% CFR-2, 2% Flocele		

PERFORATION RECORD

Shots Per Foot	Specify Footage of Each Interval Perforated	Acid, Fracture, Shot, Cement Squeeze Record (Amount and Kind of Material Used)	Depth
2	3858 - 68	1500 GAL. DSFE Acid 15%	3858-68
		HAI - 65 l. 5 Gal.	
		LOSURF 259 3 Gals.	
		20 Perf. Pac Balls	

TUBING RECORD Size Set At Packer at Liner Run  Yes  No  
 2-3/8