

21) KANSAS

WELL COMPLETION REPORT AND DRILLER'S LOG

State Geological Survey
Wichita Branch

S. 26 T. 11 R. 22W E
Loc. NW NW NE
County Trego

API No. 15 — 195 — 20,778
County Number

Operator
Kansas Oil Corporation

Address
250 N. Rock Road, Suite 300, Wichita, KS 67208

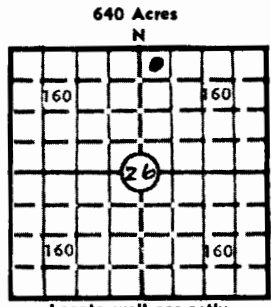
Well No. #1 Lease Name D. Hillman

Footage Location
330 feet from (N) ~~XX~~ line 2310 feet from (E) ~~XX~~ line

Principal Contractor Spartan Drilling Co. Geologist Paul Laird

Spud Date 3/21/81 Date Completed 4/1/81 Total Depth 4025 P.B.T.D.

Directional Deviation None Oil and/or Gas Purchaser D & A



Elev.: Gr. 2265
DF 2273 KB 2276

CASING RECORD

Report of all strings set — surface, intermediate, production, etc.

Purpose of string	Size hole drilled	Size casing set (in O.D.)	Weight lbs/ft.	Setting depth	Type cement	Sacks	Type and percent additives
Surface		8 5/8"		304'	common	200	2% gel 3% CaCl

LINER RECORD

PERFORATION RECORD

Top, ft.	Bottom, ft.	Sacks cement	Shots per ft.	Size & type	Depth interval

Size	Setting depth	Packer set at

ACID, FRACTURE, SHOT, CEMENT SQUEEZE RECORD

Amount and kind of material used	Depth interval treated

INITIAL PRODUCTION D & A

Date of first production		Producing method (flowing, pumping, gas lift, etc.)			
RATE OF PRODUCTION PER 24 HOURS	Oil	Gas	Water	Gas-oil ratio	
	bbls.	MCF	bbls.	CFPB	
Disposition of gas (vented, used on lease or sold)			Producing interval(s)		

INSTRUCTIONS: As provided in KCC Rule 82-2-125, within 90 days after completion of a well, one completed copy of this Drillers Log shall be transmitted to the State Geological Survey of Kansas, 4150 Monroe Street, Wichita, Kansas 67209. Copies of this form are available from the Conservation Division, State Corporation Commission, 245 No. Water, Wichita, Kansas 67202. Phone AC 316-522-2206. If confidential custody is desired, please note Rule 82-2-125. Drillers Logs will be on open file in the Oil and Gas Division, State Geological Survey of Kansas, Lawrence, Kansas 66044.

Operator Kansas Oil Corporation		DESIGNATE TYPE OF COMP.: OIL, GAS, DRY HOLE, SWDW, ETC.:
Well No. #1	Lease Name D. Hillman	Dry Hole
S <u>26</u> T <u>11</u> R <u>22</u> W <u>E</u> W		

WELL LOG

Show all important zones of porosity and contents thereof; cored intervals, and all drill-stem tests, including depth interval tested, cushion used, time tool open, flowing and shut-in pressures, and recoveries.

SHOW GEOLOGICAL MARKERS, LOGS RUN, OR OTHER DESCRIPTIVE INFORMATION.

FORMATION DESCRIPTION, CONTENTS, ETC.	TOP	BOTTOM	NAME	DEPTH
Anhydrite	1724			
Heebner	3526			
Toronto	3548			
Lansing A	3564			
Lansing B	3604			
Wyandotte	3641			
Swope	3794			
Hertha	3825			
Marmaton	3878			
Arbuckle	4006			
DST#1, 3594-3620', 30-60-30-60, Rec. 75' muddy water. IHP 1723 psi., IFP 48-58 psi., ISIP 653 psi., FFP 87-97 psi., FSIP 614 psi., FHP 1713 psi., BHT 107°F.				
DST#2, 3656-3692', 30-60-30-60, Rec. 30' muddy water. IHP 1713 psi., IFP 48-58 psi., ISIP 943 psi., FFP 68-68 psi., FSIP 924 psi., FHP 1703 psi., BHT 109°F.				
DST#3, 3760-3785', 30-60-30-60, Rec. 2' watery mud. IHP 1663 psi., IFP 29-39 psi., ISIP 58 psi., FFP 68-68 psi., FSIP 58 psi., BHT 107°F.				
DST#4, 3881-3910', 30-60-30-60, Rec. 10' watery mud. IHP 1772 psi., IFP 48-58 psi., ISIP 885 psi., FFP 58-97 psi., FSIP 856 psi., BHT 109°F.				

USE ADDITIONAL SHEETS, IF NECESSARY, TO COMPLETE WELL RECORD.

Date Received	<p align="center"><i>Michael R. Bryan</i> Signature</p> <p align="center">Michael R. Bryan Title</p> <p align="center">May 29, 1981 Date</p>
----------------------	--

80896