

**KANSAS DRILLERS LOG**

API No. 15 — 195 — 20,732  
 County Number

S. 28 T. 11 R. 22 W  
 Loc. SW NE NW  
 County Trego

Operator  
Kansas Oil Corporation

Address  
250 N. Rock Road, Suite 300, Wichita, Kansas 67206

Well No. #5 Lease Name Berens-Ries

Footage Location  
990 feet from (N) ~~line~~ 1650 feet from (W) line

Principal Contractor Spartan Drilling Geologist Zeb Stewart

Spud Date 12/11/80 Total Depth 3980 P.B.T.D.

Date Completed 12/22/80 Oil Purchaser

640 Acres  
 N  

160	0	160
<b>RELEASED</b>		
160		160

 Date: DEC 1 1982  
 FROM CONFIDENTIAL  
 Elev.: Gr. 2298  
 DF 2304 KB 2306

State Geological Survey  
 WICHITA BRANCH

**CASING RECORD**

Report of all strings set— surface, intermediate, production, etc.

Purpose of string	Size hole drilled	Size casing set (in O.D.)	Weight lbs/ft.	Setting depth	Type cement	Sacks	Type and percent additives
Surface		8 5/8		250'	common	175	2%gel 3% CaCl
Production		4 1/2		3960'	Haliburtan	300	Posmix (60-40)

**LINER RECORD**

**PERFORATION RECORD**

Top, ft.	Bottom, ft.	Sacks cement	Shots per ft.	Size & type	Depth interval
			2		3599-3903

**TUBING RECORD**

Size	Setting depth	Packer set at

**ACID, FRACTURE, SHOT, CEMENT SQUEEZE RECORD**

Amount and kind of material used	Depth interval treated
Acid w/ 400 gals of 15% Mud acid. Swb 12.75 BOPH for 4 hrs.	3599-3903

**INITIAL PRODUCTION**

Date of first production <u>1/12/81</u>	Producing method (flowing, pumping, gas lift, etc.) <u>pumping</u>				
RATE OF PRODUCTION PER 24 HOURS	Oil <u>84BOPD</u> bbls.	Gas <u>N/A</u> MCF	Water <u>N/A</u> bbls.	Gas-oil ratio <u>N/A</u> CFPB	Producing interval (s) <u>CANSING B Zone</u>
Disposition of gas (vented, used on lease or sold)					

INSTRUCTIONS: As provided in KCC Rule 82-2-125, within 90 days after completion of a well, one completed copy of this Drillers Log shall be transmitted to the State Geological Survey of Kansas, 4150 Monroe Street, Wichita, Kansas 67209. Copies of this form are available from the Conservation Division, State Corporation Commission, 3830 So. Meridian (P.O. Box 17027), Wichita, Kansas 66217. Phone AC 316-522-2206. If confidential custody is desired, please note Rule 82-2-125. Drillers Logs will be on open file in the Oil and Gas Division, State Geological Survey of Kansas, Lawrence, Kansas 66044.

95320

DESIGNATE TYPE OF COMP.: OIL, GAS, DRY HOLE, SWDW, ETC.:

Operator  
Kansas Oil Corporation

Well No. #5  
Lease Name Berens Ries

Oil

S 28 T 11 R 22 W

WELL LOG

Show all important zones of porosity and contents thereof; cored intervals, and all drill-stem tests, including depth interval tested, cushion used, time tool open, flowing and shut-in pressures, and recoveries.

SHOW GEOLOGICAL MARKERS, LOGS RUN, OR OTHER DESCRIPTIVE INFORMATION.

FORMATION DESCRIPTION, CONTENTS, ETC.	TOP	BOTTOM	NAME	DEPTH
Heebner	3520			
Toronto	3545			
Lansing A	3561			
Lansing B	3600			
Wyandotte	3636			
Lane Sh.	3693			
Dennis	3763			
Swope	3785			
Hertha	3817			
Marmaton	3881			
Arbuckle	3962			
DST#1, Rec. 2' drlg. mud	3519	3556		
IHP - 1808 psi IFP - 39-39 psi, ISIP - 47 psi				
FFP - 39-39psi FHP - 1792 psi				
DST#2, 30-60-30-60, Rec 130' GIP, 20' CO, 86' MW, 15' frothy oil,	3549	3581		
IHP - 1824 psi IFP - 57-62 psi ISIP - 803 psi FFP - 78-85 psi				
FSIP - 787 psi FHP - 1808 psi				
DST#3, 30-60-30-60, Rec 1305' GIP, 128' CGP, 136' GM & WCO. 3583'-3612'				
IHP = 62-124 psi ISP - 576psi FFP - 155-71 psi FSIP - 498 psi FHP - 1832-48 psi				
DST#4, 30-60-30-60, Rec 345' GIP, 10' CGP, 166' OWCM,	3888	3907		
IHP - 31 -62 psi ISIP - 654 psi FFP = 78-93 psi FSIP - 647 psi FHP - 2145 -61 psi				

USE ADDITIONAL SHEETS, IF NECESSARY, TO COMPLETE WELL RECORD.

Date Received

*Michael R. Bryan*  
Signature

Michael R. Bryan  
Title

4/21/81  
Date

Date

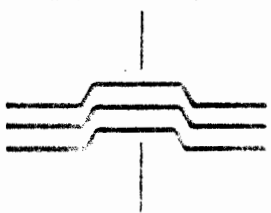
28-11-22W

*Red*



State Geological Survey  
WICHITA BRANCH

December 23, 1980



DRILLERS LOG

RE: Berens-Ries #5  
SW/NE/NW  
Sec. 28 R11-T22W  
Trego County, KS

OPERATOR: Kansas Oil Corporation  
CONTRACTOR: Spartan Drilling Corporation  
COMMENCED: 12-11-80  
COMPLETED: 12-22-80

Surface Pipe 246' 12 1/4" w/175 2% gel 3% cc

0	39	Sand
39	278	Sand & Shale
278	1563	Shale & Sand
1563	2289	Shale
2289	3275	Shale - Lime
3275	3612	Lime & Shale
3612	3711	Lime
3711	3887	Lime & Shale
3887	3980	Lime & Shale

RECEIVED  
COMMISSION  
FEB 27 1981  
COMMISSION DIVISION  
Wichita, Kansas

We certify that the above and foregoing is a true and correct copy of the log on the Berens-Ries-#5 in Trego County, Kansas.

SPARTAN DRILLING CORPORATION

*Floyd C. Wilson*  
Floyd C. Wilson  
President

Subscribed and sworn to before me this 23rd day of December 1980.

*Carol E. Wilson*  
Carol E. Wilson, Notary Public