

IMPORTANT
Kans. Geo. Survey request
Samples on this well.

OK

KANSAS DRILLERS LOG

S. 33 T. 11 R. 22 ^X W
Loc. W2 NW NW
County Trego

API No. 15 — 195 — 20,578
County Number

Operator
Rupe Oil Co., Inc./ Foxfire Exploration

Address
Box 2273 Wichita, Kansas 67201

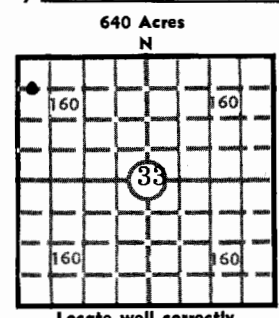
Well No. # 1 Lease Name Flagler

Footage Location
660 feet from (N) (E) line 330 feet from (E) (W) line

Principal Contractor Pioneer Drilling Co., Inc. Geologist Donald C. Marchant

Spud Date September 6, 1979 Total Depth 4066' P.B.T.D. 4020'

Date Completed September 16, 1979 Oil Purchaser Clear Creek, Inc.



Locate well correctly
Elev.: Gr. 2346'
DF 2350' KB 2351'

CASING RECORD

CONFIDENTIAL

Report of all strings set — surface, intermediate, production, etc.

Purpose of string	Size hole drilled	Size casing set (in O.D.)	Weight lbs/ft.	Setting depth	Type cement	Sacks	Type and percent additives
Surface	12 1/4"	8 5/8"	20#	291'	Common	150	2% Gel, 3% Calcium Chloride
Production	7 3/4"	4 1/2"	10.5#	4062'	50-50 Pozmix	200	18% Salt, 75% CFR-2

LINER RECORD

PERFORATION RECORD

Top, ft.	Bottom, ft.	Sacks cement	Shots per ft.	Size & type	Depth interval
			2	DP	3957' - 63'

TUBING RECORD

Size	Setting depth	Packer set at
2 3/8"	3970'	--

ACID, FRACTURE, SHOT, CEMENT SQUEEZE RECORD

Amount and kind of material used	Depth interval treated
12 Bbls. 15% MCA	
1338 Bbls. 20,000# 20/40 Sand 2000# 10/20 Sand	3957' - 63'

INITIAL PRODUCTION

Date of first production <u>October 26, 1979</u>	Producing method (flowing, pumping, gas lift, etc.) <u>Pumping</u>
RATE OF PRODUCTION PER 24 HOURS	Oil <u>120</u> bbls. MCF Gas <u>Trace</u> bbls. CFPB Water <u>Trace</u> Gas-oil ratio
Disposition of gas (vented, used on lease or sold)	Producing interval (s) <u>3957' - 63'</u>

INSTRUCTIONS: As provided in KCC Rule 82-2-125, within 90 days after completion of a well, one completed copy of this Drillers Log shall be transmitted to the State Geological Survey of Kansas, 4150 Monroe Street, Wichita, Kansas 67209. Copies of this form are available from the Conservation Division, State Corporation Commission, 3830 So. Meridian (P.O. Box 17027), Wichita, Kansas 66217. Phone AC 316-522-2206. If confidential custody is desired, please note Rule 82-2-125. Drillers Logs will be on open file in the Oil and Gas Division, State Geological Survey of Kansas, Lawrence, Kansas 66044.

Operator **Rupe Oil Company, Inc./Foxfire Exploration** DESIGNATE TYPE OF COMP.: OIL, GAS, DRY HOLE, SWDW, ETC.: **oil**

Well No. **1** Lease Name **Flagler**

S 33 T 11S R 22 ^E/_W

WELL LOG

Show all important zones of porosity and contents thereof; cored intervals, and all drill-stem tests, including depth interval tested, cushion used, time tool open, flowing and shut-in pressures, and recoveries.

SHOW GEOLOGICAL MARKERS, LOGS RUN, OR OTHER DESCRIPTIVE INFORMATION.

FORMATION DESCRIPTION, CONTENTS, ETC.	TOP	BOTTOM	NAME	DEPTH
			<u>Log Tops</u>	
DST #1 3602' - 42' 60-60-60-60 Recovered 20' M FW Spks O IF 43-43#, ISIP 1082#, FF 54=54#, FSIP 1040#			Topeka Heebner Lansing Marmaton	3362' 3578' 3615' 3940'
DST #2 3807' - 57' 30-30-30-30 Recovered 6' M IF 65-65#, ISIP 1019#, FF 65-65#, FSIP 868#			Arbuckle	4040'
DST #3 3941' - 80' 60-60-60-60 Rec. 279' FO, 372' OCM IF 43-152#, ISIP 1189#, FF 196-272#, FSIP 1157#				

USE ADDITIONAL SHEETS, IF NECESSARY, TO COMPLETE WELL RECORD.

Date Received	Rupe Oil Company, Inc. By <u>William G. Clement</u> William G. Clement Petroleum Geologist <small>Title</small> November 30, 1979 <small>Date</small>
---------------	---

10956



State Geological Survey
WICHITA BRANCH

JUN 8 0 REC'D

WELL LOG

15-195, 20578 P1
33-11-22W

Released
7/16/81

CONFIDENTIAL

OPERATOR: Rupe Oil Company

WELL NAME: Flagler #1 LOCATION: NW NW 33-11S-22W

COUNTY: Trego STATE: Kansas

WELL COMMENCED: September 5, 1979 WELL COMPLETED: September 16, 1979

ELEVATION: 2351' K.B. TOTAL DEPTH: 4065'

PRODUCTION: Oil RIG NO: #1

CASING - 8-5/8": 282.82' of 20# cemented with 150 sxs common 2% gel 3% cc

4 1/2" ~~5-7/8"~~ 4063' of 10.5# cemented with 200 sxs 50-50 poz 2% gel 18% salt
3/4 of 1% CFRC

ALL MEASUREMENTS TAKEN FROM THE TOP OF ROTARY BUSHING:

FROM	TO	FORMATION	DEVIATION FROM VERTICAL	REMARKS:
0'	292'	shale	292' - 1/8 degree	
292'	960'	shales and sands		
960'	1368'		1285' - 3/4 degree	
1368'	1794'	shale		
1794'	1847'	Anhydrite		
1847'	2105'	shales and shells	2105' - 1 degree	
2105'	2300'	shale and shells		
2300'	2531'			
2531'	2687'	shales and limes		
2687'	2895'	shale and lime		
2895'	3065'	shale and lime		
3065'	3238'	lime and shale		
3238'	3380'	lime and shale		
3380'	3506'	lime and shale		
3506'	3585'	lime and shale		
3585'	3642'	lime		
3642'	3645'			
3645'	3715'	lime		
3715'	3751'			
3751'	3809'	lime		
3809'	3857'	lime		
3857'	3921'			
3921'	3980'	lime		
3980'	4026'			
4026'	4065'	shale and lime		
4065'	RTD			

STATE RECEIVED
SEP 24 1979
MINERAL DIVISION
Wichita, Kansas

STATE OF KANSAS
COUNTY OF

The undersigned hereby certifies that to the best of his knowledge and belief, the above facts are true and correct