

TRILOBITE TESTING INC.

P.O. Box 1733 • Hays, Kansas 67601

Test Ticket

NO. 04188415418

4/10

Well Name & No. Denison #1-10 Test No. 1 Date 2-17-11
 Company Cholla Production LLC Elevation 2261 KB 2256 GL
 Address 7851 S. ELATI ST, SUITE 201 LITTLETON, CO 80120-8081
 Co. Rep / Geo. Bill Goff Rig WW rig 8
 Location: Sec. 10 Twp. 13 Rge. 23^W Co. Trego State Ks

Interval Tested 3488-3524 Zone Tested LKC 'A'
 Anchor Length 36 Drill Pipe Run 3353 Mud Wt. 8.9
 Top Packer Depth 3483 Drill Collars Run 120 Vis 5.5
 Bottom Packer Depth 3488 Wt. Pipe Run - WL 6.4
 Total Depth 3524 Chlorides 1000 ppm System LCM 3#

Blow Description IFP - STRONG BLOW IN 1 MIN
ISIP - STRONG BLOW BACK IN 5 MIN
FFP - STRONG BLOW THRU-OUT, GTS IN 20 MIN
FSIP - STRONG BLOW BACK

Rec	Feet of	%gas	%oil	%water	%mud
<u>1030</u>	<u>CO</u>				
<u>120</u>	<u>SMGO</u>	<u>20</u>	<u>75</u>		<u>5</u>
Rec	Feet of	%gas	%oil	%water	%mud
Rec	Feet of	%gas	%oil	%water	%mud

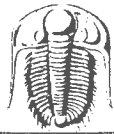
Rec Total 1150 BHT 113 Gravity 38 API RW - @ - °F Chlorides - ppm

(A) Initial Hydrostatic 1665 Test 1125' T-On Location 1630
 (B) First Initial Flow 110 Jars T-Started 1730
 (C) First Final Flow 175 Safety Joint 75' T-Open 1920
 (D) Initial Shut-In 932 Circ Sub T-Pulled 2200
 (E) Second Initial Flow 204 Hourly Standby T-Out 0057
 (F) Second Final Flow 432 Mileage 85 RT 100 25 Comments _____
 (G) Final Shut-In 930 Sampler 250' _____
 (H) Final Hydrostatic 1643 Straddle Ruined Shale Packer _____
 Shale Packer Ruined Packer _____

Initial Open 10 Extra Packer _____
 Initial Shut-In 30 Extra Recorder _____
 Final Flow 30 Day Standby _____
 Final Shut-In 90 Accessibility _____
 Sub Total 1556.25 MP/DST Disc't _____

Approved By _____ Our Representative RAY SCHWAGER *Thank you*

Trilobite Testing Inc. shall not be liable for damaged of any kind of the property or personnel of the one for whom a test is made, or for any loss suffered or sustained, directly or indirectly, through the use of its equipment, or its statements or opinion concerning the results of any test, tools lost or damaged in the hole shall be paid for at cost by the party for whom the test is made.



TRILOBITE TESTING, INC.

P.O. Box 362 • Hays, Kansas 67601

FLUID SAMPLER DATA

Ticket No. 41884 Date 2-17-11
 Company Name Ch. La. Production U.S.
 Lease Denison #1-10 Test No. _____
 County rego Sec. 10 Twp. 11 Rng. 23^W

SAMPLER RECOVERY

Gas 1250 ML
 Oil 2500 ML
 Mud 250 ML
 Water - ML
 Other - ML
 Pressure 550 ML
 Total _____ ML

PIT MUD ANALYSIS

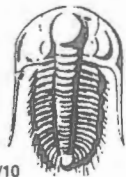
Chlorides 1000 ppm.
 Resistivity 4 ohms @ 60 F
 Viscosity 55
 Mud Weight 8.9
 Filtrate 6.4
 Other 3# LCM

SAMPLER ANALYSIS

Resistivity - ohms @ - F
 Chlorides - ppm.
 Gravity 38 corrected @60F

PIPE RECOVERY

TOP
 Resistivity _____ ohms @ _____ F
 Chlorides _____ ppm.
MIDDLE
 Resistivity _____ ohms @ _____ F
 Chlorides _____ ppm.
BOTTOM
 Resistivity _____ ohms @ _____ F
 Chlorides _____ ppm.



TRILOBITE TESTING INC.

P.O. Box 1733 • Hays, Kansas 67601

Test Ticket

NO. 041885

4/10

Well Name & No. Denison #1-10 Test No. 2 Date 2-18-11
 Company Cholla Production LLC Elevation 2261 KB 2256 GL
 Address _____
 Co. Rep / Geo. Bill Goff Rig WW1198
 Location: Sec. 10 Twp. 11^s Rge. 23^w Co. Trego State Ks

Interval Tested 3514-3535 Zone Tested LKC "C"
 Anchor Length 21 Drill Pipe Run 3385 Mud Wt. 8.9
 Top Packer Depth 3509 Drill Collars Run 120 Vis 542
 Bottom Packer Depth 3514 Wt. Pipe Run - WL 6.4
 Total Depth 3535 Chlorides 2000 ppm System LCM 3#

Blow Description IFP - STRONG BLOW IN 2 MIN
ISIP - 3 1/2" BLOW BACK
FFP - STRONG BLOW IN 2 MIN
FSIP - STRONG BLOW BACK IN 8 MIN

Rec	Feet of	%gas	%oil	%water	%mud
<u>186</u>	<u>CO</u>				
<u>90</u>	<u>M60</u>	<u>20</u>	<u>55</u>	<u>25</u>	
<u>124</u>	<u>M60</u>	<u>20</u>	<u>75</u>	<u>5</u>	
<u>62</u>	<u>50+6CW</u>	<u>10</u>	<u>1</u>	<u>89</u>	
<u>1830</u>	<u>GTP</u>				

Rec Total 462 BHT 110 Gravity 38 API RW .14 @ 66 °F Chlorides 58000 ppm

(A) Initial Hydrostatic 1643 Test 1125 T-On Location 0530
 (B) First Initial Flow 44 Jars _____ T-Started 0600
 (C) First Final Flow 92 Safety Joint 75 T-Open 0755
 (D) Initial Shut-In 1203 Circ Sub _____ T-Pulled 1035
 (E) Second Initial Flow 103 Hourly Standby _____ T-Out 1223
 (F) Second Final Flow 186 Mileage 85 RT 106.25 Comments _____
 (G) Final Shut-In 1200 Sampler 250 _____
 (H) Final Hydrostatic 1611 Straddle _____ Ruined Shale Packer _____
 Shale Packer _____ Ruined Packer _____

Initial Open 10 Extra Packer _____ Extra Copies _____
 Initial Shut-In 30 Extra Recorder _____ Sub Total 8
 Final Flow 30 Day Standby _____ Total 1556.25
 Final Shut-In 90 Accessibility _____ MP/DST Disc't _____
 Sub Total 1556.25

Approved By _____ Our Representative Ray Schwager Thank you

Trilobite Testing Inc. shall not be liable for damaged of any kind of the property or personnel of the one for whom a test is made, or for any loss suffered or sustained, directly or indirectly, through the use of its equipment, or its statements or opinion concerning the results of any test, tools lost or damaged in the hole shall be paid for at cost by the party for whom the test is made.



TRILOBITE TESTING, INC.

P.O. Box 362 • Hays, Kansas 67601

FLUID SAMPLER DATA

Ticket No. 41885 Date 2-18-11
 Company Name Cholla Production LLC
 Lease Denison #1-10 Test No. 2
 County Trego Sec. 10 Twp. 11^s Rng. 23^w

SAMPLER RECOVERY

Gas 600 ML
 Oil 2500 ML
 Mud 200 ML
 Water 700 ML
 Other — ML
 Pressure 650 ML
 Total _____ ML

PIT MUD ANALYSIS

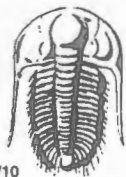
Chlorides 2000 ppm.
 Resistivity 2.2 ohms @ 55 F
 Viscosity 42
 Mud Weight 9
 Filtrate 6.4
 Other 3#

SAMPLER ANALYSIS

Resistivity .14 ohms @ 66 F
 Chlorides 58000 ppm.
 Gravity 38 corrected @60F

PIPE RECOVERY

TOP
 Resistivity _____ ohms @ _____ F
 Chlorides _____ ppm.
MIDDLE
 Resistivity _____ ohms @ _____ F
 Chlorides _____ ppm.
BOTTOM
 Resistivity _____ ohms @ _____ F
 Chlorides _____ ppm.



TRILOBITE TESTING INC.

P.O. Box 1733 • Hays, Kansas 67601

Test Ticket

NO. 041886

4/10

FEB 22 2011

Well Name & No. Denison #1-10 Test No. 3 Date 2-18-11
 Company Cholla Production LLC Elevation 2261 KB 2256 GL
 Address _____
 Co. Rep / Geo. Bill Goff Rig WW1198
 Location: Sec. 10 Twp. 11^s Rge. 23^w Co. Trego State Ks

Interval Tested 3533-3571 Zone Tested LKC D-E
 Anchor Length 38 Drill Pipe Run 3414 Mud Wt. 8.8
 Top Packer Depth 3528 Drill Collars Run 120 Vis 44
 Bottom Packer Depth 3533 Wt. Pipe Run - WL 8
 Total Depth 3571 Chlorides 2000 ppm System LCM 2#

Blow Description IFP - STRONG BLOW IN 1 MIN
ISIP - STRONG BLOW BACK
FFP - STRONG BLOW THRU-OUT
FSIP - STRONG BLOW BACK, GTS IN 90 MIN

Rec	Feet of	%gas	%oil	%water	%mud
<u>2805</u>	<u>GTP</u>				
<u>640</u>	<u>CO</u>				
<u>124</u>	<u>SM60</u>	<u>15</u>	<u>80</u>		<u>5</u>
Rec	Feet of	%gas	%oil	%water	%mud
Rec	Feet of	%gas	%oil	%water	%mud

Rec Total 764 BHT 100 Gravity 33 API RW - @ - °F Chlorides - ppm
 (A) Initial Hydrostatic 1650 Test 1125 T-On Location 1845
 (B) First Initial Flow 56 Jars _____ T-Started 1900
 (C) First Final Flow 83 Safety Joint 75 T-Open 2045
 (D) Initial Shut-In 1243 Circ Sub _____ T-Pulled 2325
 (E) Second Initial Flow 98 Hourly Standby _____ T-Out 0140
 (F) Second Final Flow 212 Mileage 85 RT 100.25 Comments _____
 (G) Final Shut-In 1234 Sampler 250 _____
 (H) Final Hydrostatic 1645 Straddle _____ Ruined Shale Packer _____
 Shale Packer _____ Ruined Packer _____
 Extra Packer _____ Extra Copies _____
 Extra Recorder _____ Sub Total 0
 Day Standby _____ Total 1556.25
 Accessibility _____ MP/DST Disc't _____

Initial Open 10
 Initial Shut-In 30
 Final Flow 30
 Final Shut-In 90

Approved By _____ Our Representative RAY SCHWAGER *thank you*

Trilobite Testing Inc. shall not be liable for damaged of any kind of the property or personnel of the one for whom a test is made, or for any loss suffered or sustained, directly or indirectly, through the use of its equipment, or its statements or opinion concerning the results of any test, tools lost or damaged in the hole shall be paid for at cost by the party for whom the test is made.



TRILOBITE TESTING, INC.

P.O. Box 362 • Hays, Kansas 67601

FLUID SAMPLER DATA

Ticket No. 41886 Date 2-18-11
 Company Name Cholla Production
 Lease Denison #1-10 Test No. 3
 County Trego Sec. 10 Twp. 11^s Rng. 23^w

SAMPLER RECOVERY

Gas 1000 ML
 Oil 2900 ML
 Mud 100 ML
 Water — ML
 Other — ML
 Pressure 800 ML
 Total _____ ML

PIT MUD ANALYSIS

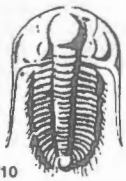
Chlorides 2000 ppm.
 Resistivity 2.2 ohms @ 55 F
 Viscosity 44
 Mud Weight 8.8
 Filtrate 8
 Other 2# LCM

SAMPLER ANALYSIS

Resistivity — ohms @ — F
 Chlorides — ppm.
 Gravity 33 corrected @60F

PIPE RECOVERY

TOP
 Resistivity _____ ohms @ _____ F
 Chlorides _____ ppm.
MIDDLE
 Resistivity _____ ohms @ _____ F
 Chlorides _____ ppm.
BOTTOM
 Resistivity _____ ohms @ _____ F
 Chlorides _____ ppm.



TRILOBITE TESTING INC.

P.O. Box 1733 • Hays, Kansas 67601

Test Ticket

NO. 041887

FEB 22 2011

Well Name & No. Denison #1-10 Test No. 4 Date 2-19-11
 Company Cholla Production LLC Elevation 2261 KB 2256 GL
 Address _____
 Co. Rep / Geo. Bill Goff Rig WW rig 8
 Location: Sec. 10 Twp. 11^s Rge. 23^w Co. Trego State Ks

Interval Tested 3570-3588 Zone Tested LKC "F"
 Anchor Length 18 Drill Pipe Run 3448 Mud Wt. 8.9
 Top Packer Depth 3565 Drill Collars Run 120 Vis 55
 Bottom Packer Depth 3570 Wt. Pipe Run - WL 8
 Total Depth 3588 Chlorides 2000 ppm System LCM 2[#]

Blow Description IFP - STRONG BLOW IN 1 MIN
ISIP - 1/2" BLOW BACK
FFP - STRONG BLOW IN 2 MIN
FSIP - STRONG BLOW BACK

Rec	Feet of	%gas	%oil	%water	%mud
<u>250</u>	<u>CO</u>				
<u>150</u>	<u>GMO</u>	<u>40</u>	<u>50</u>		<u>10</u>
<u>30</u>	<u>SOC MW</u>	<u>20</u>	<u>2</u>	<u>58</u>	<u>20</u>
<u>3000</u>	<u>GIP</u>				
Rec	Feet of	%gas	%oil	%water	%mud

Rec Total 430 BHT 111 Gravity 41 API RW .15 @ 67 °F Chlorides 53000 ppm
 (A) Initial Hydrostatic 1659 Test 1125 T-On Location 0645
 (B) First Initial Flow 42 Jars T-Started 0657
 (C) First Final Flow 85 Safety Joint 75 T-Open 0830
 (D) Initial Shut-In 852 Circ Sub T-Pulled 1110
 (E) Second Initial Flow 95 Hourly Standby T-Out 1316
 (F) Second Final Flow 172 Mileage 85 RT 106.25 Comments _____
 (G) Final Shut-In 870 Sampler 250 _____
 (H) Final Hydrostatic 1645 Straddle _____
 Shale Packer _____
 Extra Packer _____
 Extra Recorder _____
 Day Standby _____
 Accessibility _____

Initial Open 10
 Initial Shut-In 30
 Final Flow 30
 Final Shut-In 90
 Sub Total 8
 Total 1556.25
 MP/DST Disc't _____
 Sub Total 1556.25

Approved By _____ Our Representative Ray Schwager Thank you

TriLOBite Testing Inc. shall not be liable for damaged of any kind of the property or personnel of the one for whom a test is made, or for any loss suffered or sustained, directly or indirectly, through the use of its equipment, or its statements or opinion concerning the results of any test, tools lost or damaged in the hole shall be paid for at cost by the party for whom the test is made.



TRILOBITE TESTING, INC.

P.O. Box 362 • Hays, Kansas 67601

FLUID SAMPLER DATA

Ticket No. 41887 Date 2-19-11
 Company Name Cholla Production LLC
 Lease Denison #1-10 Test No. 4
 County Trego Sec. 10 Twp. 11^s Rng. 23^w

SAMPLER RECOVERY

Gas 900 ML
 Oil 2400 ML
 Mud 100 ML
 Water 600 ML
 Other _____ ML
 Pressure 450 ML
 Total _____ ML

PIT MUD ANALYSIS

Chlorides 2000 ppm.
 Resistivity 2.1 ohms @ 60 F
 Viscosity 55
 Mud Weight 8.9
 Filtrate 8
 Other 2# LCM

SAMPLER ANALYSIS

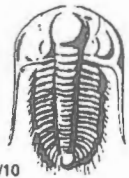
Resistivity .15 ohms @ 67 F
 Chlorides 53000 ppm.
 Gravity 41 corrected @60F

PIPE RECOVERY

TOP
 Resistivity _____ ohms @ _____ F
 Chlorides _____ ppm.

MIDDLE
 Resistivity _____ ohms @ _____ F
 Chlorides _____ ppm.

BOTTOM
 Resistivity _____ ohms @ _____ F
 Chlorides _____ ppm.



TRILOBITE TESTING INC.

P.O. Box 1733 • Hays, Kansas 67601

Test Ticket

NO. 041888

FEB 22 2011

4/10

Well Name & No. Denison #1-10 Test No. 5 Date 2-19-11
 Company Cholla Production LLC Elevation 2261 KB 2256 GL
 Address _____
 Co. Rep / Geo. Bill Goff Rig WW 1198
 Location: Sec. 10 Twp. 11^s Rge. 23^w Co. Trego State K

Interval Tested 3587-3631 Zone Tested LPC "G"
 Anchor Length 44 Drill Pipe Run 3448 Mud Wt. 9
 Top Packer Depth 3582 Drill Collars Run 120 Vis 5.5
 Bottom Packer Depth 3587 Wt. Pipe Run — WL 8
 Total Depth 3631 Chlorides 1400 ppm System LCM 2#

Blow Description IFP - WEAK TO FAIR BLOW 1/2" TO 6" BLOW
ISIP - NO BLOW BACK
FFP - 5" BUILT TO STRONG BLOW IN 15 MIN
FSIP - NO BLOW BACK

Rec	Feet of	%gas	%oil	%water	%mud
<u>480</u>	<u>GIP</u>				
<u>15</u>	<u>MGO</u>	<u>10</u>	<u>50</u>	<u>40</u>	<u>—</u>
<u>124</u>	<u>MGO</u>	<u>10</u>	<u>70</u>	<u>20</u>	<u>—</u>
Rec	Feet of	%gas	%oil	%water	%mud
Rec	Feet of	%gas	%oil	%water	%mud

Rec Total 139 BHT 104 Gravity 40 API RW — @ — ° F Chlorides — ppm

(A) Initial Hydrostatic 1667 Test 1125 T-On Location 1745
 (B) First Initial Flow 15 Jars _____ T-Started 1828
 (C) First Final Flow 33 Safety Joint 75 T-Open 2005
 (D) Initial Shut-In 960 Circ Sub _____ T-Pulled 2345
 (E) Second Initial Flow 38 Hourly Standby _____ T-Out 0124
 (F) Second Final Flow 66 Mileage 85 RT 100.25 Comments _____
 (G) Final Shut-In 1046 Sampler 250 _____
 (H) Final Hydrostatic 1662 Straddle _____ Ruined Shale Packer _____
 Shale Packer _____ Ruined Packer _____
 Extra Packer _____ Extra Copies _____
 Extra Recorder _____ Sub Total 0
 Day Standby _____ Total 1556.25
 Accessibility _____ MP/DST Disc't _____

Initial Open 10
 Initial Shut-In 30
 Final Flow 45
 Final Shut-In 135

Sub Total 1556.25

Approved By _____ Our Representative Ray Schwager **THANK YOU**

TriLOBITE Testing Inc. shall not be liable for damaged of any kind of the property or personnel of the one for whom a test is made, or for any loss suffered or sustained, directly or indirectly, through the use of its equipment, or its statements or opinion concerning the results of any test, tools lost or damaged in the hole shall be paid for at cost by the party for whom the test is made.



TRILOBITE TESTING, INC.

P.O. Box 362 • Hays, Kansas 67601

FLUID SAMPLER DATA

Ticket No. 41888 Date 2-19-11
 Company Name Cholla Production LLC
 Lease Denison #1-10 Test No. 5
 County Trego Sec. 10 Twp. 11^s Rng. 23^w

SAMPLER RECOVERY

Gas 1800 ML
 Oil 2200 ML
 Mud - ML
 Water - ML
 Other - ML
 Pressure 260* ML
 Total _____ ML

PIT MUD ANALYSIS

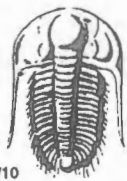
Chlorides 1400 ppm.
 Resistivity 2.6 ohms @ 65 F
 Viscosity 55
 Mud Weight 9
 Filtrate 8
 Other 2#

SAMPLER ANALYSIS

Resistivity - ohms @ - F
 Chlorides - ppm.
 Gravity _____ corrected @60F

PIPE RECOVERY

TOP
 Resistivity _____ ohms @ _____ F
 Chlorides _____ ppm.
MIDDLE
 Resistivity _____ ohms @ _____ F
 Chlorides _____ ppm.
BOTTOM
 Resistivity _____ ohms @ _____ F
 Chlorides _____ ppm.



TRILOBITE TESTING INC.

P.O. Box 1733 • Hays, Kansas 67601

Test Ticket

NO. 041889

FEB 22 2011

Well Name & No. Denison #1-10 Test No. 6 Date 2-20-11
 Company Cholla Production LLC Elevation 2261 KB 2256 GL
 Address _____
 Co. Rep / Geo. Bill Goff Rig WWrig 8
 Location: Sec. 10 Twp. 11^s Rge. 23^w Co. Trego State K

Interval Tested 3640-3680 Zone Tested LKC "J"
 Anchor Length 40 Drill Pipe Run 3511 Mud Wt. 8.9
 Top Packer Depth 3635 Drill Collars Run 120 Vis 50
 Bottom Packer Depth 3640 Wt. Pipe Run - WL 8
 Total Depth 3680 Chlorides 2700 ppm System LCM 1#

Blow Description IFP - STRONG BLOW IN 1 MIN
ISIP - STRONG BLOW BACK
FFP - STRONG BLOW THRU-OUT
FSIP - STRONG BLOW BACK, GTS

Rec	Feet of	%gas	%oil	%water	%mud
<u>1000</u>	<u>CO</u>				
<u>216</u>	<u>GMO</u>	<u>30</u>	<u>50</u>	<u>20</u>	
Rec	Feet of	%gas	%oil	%water	%mud
Rec	Feet of <u>GTS</u>	%gas	%oil	%water	%mud
Rec	Feet of	%gas	%oil	%water	%mud

Rec Total 1216 BHT 115 Gravity 38 API RW - @ - °F Chlorides - ppm

(A) Initial Hydrostatic 1698 Test 1125 T-On Location 0720
 (B) First Initial Flow 96 Jars _____ T-Started 0741
 (C) First Final Flow 182 Safety Joint 75 T-Open 0930
 (D) Initial Shut-In 1267 Circ Sub _____ T-Pulled 1210
 (E) Second Initial Flow 208 Hourly Standby _____ T-Out 1450
 (F) Second Final Flow 448 Mileage 85 RT 106.25 Comments _____
 (G) Final Shut-In 1257 Sampler 250 _____
 (H) Final Hydrostatic 1676 Straddle _____ Ruined Shale Packer _____
 Shale Packer _____ Ruined Packer _____

Initial Open 10 Extra Packer _____ Extra Copies _____
 Initial Shut-In 30 Extra Recorder _____ Sub Total 0
 Final Flow 30 Day Standby _____ Total 1556.25
 Final Shut-In 90 Accessibility _____ MP/DST Disc't _____
 Sub Total 1556.25

Approved By _____ Our Representative Ray Schwager THANK YOU

TriLOBite Testing Inc. shall not be liable for damaged of any kind of the property or personnel of the one for whom a test is made, or for any loss suffered or sustained, directly or indirectly, through the use of its equipment, or its statements or opinion concerning the results of any test, tools lost or damaged in the hole shall be paid for at cost by the party for whom the test is made.



TRILOBITE TESTING, INC.

P.O. Box 362 • Hays, Kansas 67601

FLUID SAMPLER DATA

Ticket No. 41889 Date 2-20-11
 Company Name Cholla Production LLC
 Lease Denison #1-10 Test No. 6
 County Trego Sec. 10 Twp. 11^s Rng. 23^w

SAMPLER RECOVERY

Gas 1000 ML
 Oil 3000 ML
 Mud - ML
 Water - ML
 Other - ML
 Pressure 650 ML
 Total _____ ML

PIT MUD ANALYSIS

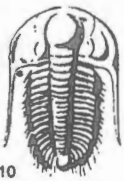
Chlorides 2700 ppm.
 Resistivity 1.5 ohms @ 60 F
 Viscosity 50
 Mud Weight 8.9
 Filtrate 8
 Other 1# LCM

SAMPLER ANALYSIS

Resistivity - ohms @ - F
 Chlorides - ppm.
 Gravity 38 corrected @60F

PIPE RECOVERY

TOP
 Resistivity _____ ohms @ _____ F
 Chlorides _____ ppm.
MIDDLE
 Resistivity _____ ohms @ _____ F
 Chlorides _____ ppm.
BOTTOM
 Resistivity _____ ohms @ _____ F
 Chlorides _____ ppm.



TRILOBITE TESTING INC.

P.O. Box 1733 • Hays, Kansas 67601

Test Ticket

FEB 22 2011

NO. 041890

Well Name & No. Denison #1-10 Test No. 7 Date 2-21-11
 Company Cholla Production LLC Elevation 2261 KB 2256 GL
 Address _____
 Co. Rep / Geo. Bill Goff Rig WW1198
 Location: Sec. 10 Twp. 11^s Rge. 23^w Co. Trego State Ko

Interval Tested 3842-3870 Zone Tested Pawnee
 Anchor Length 28 Drill Pipe Run 3727 Mud Wt. 9.1
 Top Packer Depth 3837 Drill Collars Run 120 Vis 48
 Bottom Packer Depth 3842 Wt. Pipe Run - WL 8
 Total Depth 3870 Chlorides 1900 ppm System LCM 2#

Blow Description IFP - SURFACE Blow thru-out
ISIP - NO Blow
FFP - NO Blow
FSIP - NO Blow

Rec	Feet of	%gas	%oil	%water	%mud
<u>1</u>	<u>Mud</u>				
Rec	Feet of	%gas	%oil	%water	%mud
Rec	Feet of	%gas	%oil	%water	%mud
Rec	Feet of	%gas	%oil	%water	%mud
Rec	Feet of	%gas	%oil	%water	%mud

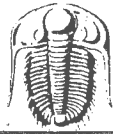
Rec Total 1 BHT 1 Gravity - API RW - @ - °F Chlorides - ppm

(A) Initial Hydrostatic 1822 Test 1125 T-On Location 0615
 (B) First Initial Flow 12 Jars _____ T-Started 0632
 (C) First Final Flow 14 Safety Joint 75 T-Open 0820
 (D) Initial Shut-In 18 Circ Sub _____ T-Pulled 1020
 (E) Second Initial Flow 14 Hourly Standby _____ T-Out 1156
 (F) Second Final Flow 15 Mileage 85 RT 106.25 Comments _____
 (G) Final Shut-In 32 Sampler 250 _____
 (H) Final Hydrostatic 1814 Straddle _____ Ruined Shale Packer _____
 Shale Packer _____ Ruined Packer _____
 Extra Packer _____ Extra Copies _____
 Extra Recorder _____ Sub Total 0
 Day Standby _____ Total 1556.25
 Accessibility _____ MP/DST Disc't _____

Initial Open 10
 Initial Shut-In 30
 Final Flow 20
 Final Shut-In 60

Approved By _____ Our Representative RAY Schwager THANK YOU

TriLOBITE Testing Inc. shall not be liable for damaged of any kind of the property or personnel of the one for whom a test is made, or for any loss suffered or sustained, directly or indirectly, through the use of its equipment, or its statements or opinion concerning the results of any test, tools lost or damaged in the hole shall be paid for at cost by the party for whom the test is made.



TRILOBITE TESTING, INC.

P.O. Box 362 • Hays, Kansas 67601

FLUID SAMPLER DATA

Ticket No. 41890 Date 2-21-11
 Company Name Chella Production LLC
 Lease Deason #1-10 Test No. 7
 County Trego Sec. 10 Twp. 11 Rng. 25

SAMPLER RECOVERY

Gas - ML
 Oil TRACE ML
 Mud 3500 ML
 Water - ML
 Other - ML
 Pressure 20 ML
 Total _____ ML

PIT MUD ANALYSIS

Chlorides _____ ppm.
 Resistivity _____ ohms @ _____ F
 Viscosity _____
 Mud Weight _____
 Filtrate _____
 Other _____

SAMPLER ANALYSIS

Resistivity _____ ohms @ _____ F
 Chlorides _____ ppm.
 Gravity _____ corrected @60F

PIPE RECOVERY

TOP
 Resistivity _____ ohms @ _____ F
 Chlorides _____ ppm.
MIDDLE
 Resistivity _____ ohms @ _____ F
 Chlorides _____ ppm.
BOTTOM
 Resistivity _____ ohms @ _____ F
 Chlorides _____ ppm.