



**TRILOBITE  
TESTING, INC.**

## DRILL STEM TEST REPORT

Prepared For: **Ohio Kentucky Oil Corp**

110 E Lowry Lane  
Lexington KY 40503

ATTN: Jim Hall

**3 11S 24W Trego KS**

**Geyer #4**

Start Date: 2006.08.14 @ 19:32:37

End Date: 2006.08.15 @ 02:33:06

Job Ticket #: 25589                      DST #: 1

Trilobite Testing, Inc

PO Box 362 Hays, KS 67601

ph: 785-625-4778 fax: 785-625-5620

Ohio Kentucky Oil Corp

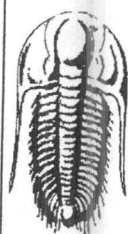
Geyer #4

3 11S 24W Trego KS

DST # 1

Lansing "B,C"

2006.08.14



**TRILOBITE TESTING, INC.**

# DRILL STEM TEST REPORT

Ohio Kentucky Oil Corp

**Geyer #4**

110 E Lowry Lane  
Lexington KY 40503

**3 11S 24W Trego KS**

Job Ticket: 25589

**DST#: 1**

ATTN: Jim Hall

Test Start: 2006.08.14 @ 19:32:37

## GENERAL INFORMATION:

Formation: **Lansing "B,C"**

Deviated: No Whipstock: ft (KB)

Time Tool Opened: 21:37:06

Time Test Ended: 02:33:06

Test Type: Conventional Bottom Hole

Tester: Chuck Smith

Unit No: 37

Interval: **3680.00 ft (KB) To 3716.00 ft (KB) (TVD)**

Total Depth: 3716.00 ft (KB) (TVD)

Hole Diameter: 7.88 inches Hole Condition: Good

Reference Elevations: 2316.00 ft (KB)

2311.00 ft (CF)

KB to GR/CF: 5.00 ft

**Serial #: 8017**

**Inside**

Press@RunDepth: 47.89 psig @ 3683.00 ft (KB)

Start Date: 2006.08.14

End Date:

2006.08.15

Capacity: 7000.00 psig

Last Calib.: 2006.08.15

Start Time: 19:32:37

End Time:

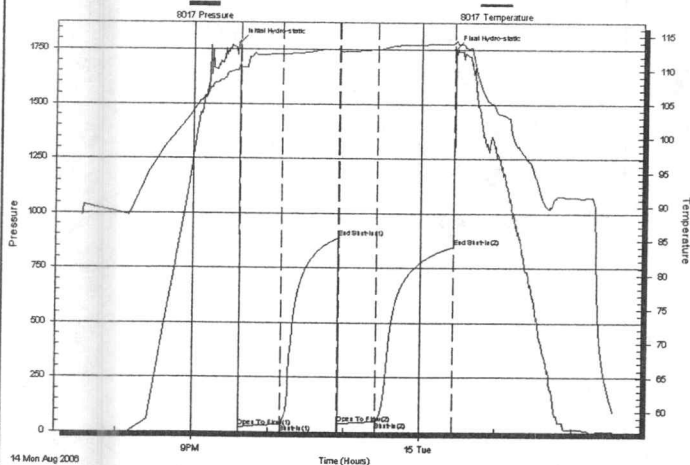
02:33:06

Time On Btm: 2006.08.14 @ 21:36:36

Time Off Btm: 2006.08.15 @ 00:26:51

TEST COMMENT: IF Weak blow 1/2 "  
ISI No return  
FF Weak blow 1/2 "  
FSI No return

Pressure vs. Time



## PRESSURE SUMMARY

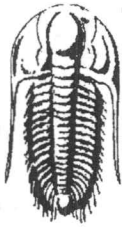
Time (Min.)	Pressure (psig)	Temp (deg F)	Annotation
0	1783.26	110.94	Initial Hydro-static
1	19.71	110.51	Open To Flow (1)
34	35.57	112.37	Shut-In(1)
79	887.92	113.15	End Shut-In(1)
80	37.68	112.84	Open To Flow (2)
109	47.89	113.08	Shut-In(2)
170	847.27	114.00	End Shut-In(2)
171	1755.58	114.33	Final Hydro-static

## Recovery

Length (ft)	Description	Volume (bbl)
62.00	SOWCM 1%O 39%W 60%M	0.87

## Gas Rates

	Choke (inches)	Pressure (psig)	Gas Rate (Mcf/d)



**TRILOBITE  
TESTING, INC.**

**DRILL STEM TEST REPORT**

**TOOL DIAGRAM**

Ohio Kentucky Oil Corp

**Geyer #4**

110 E Lowry Lane  
Lexington KY 40503

**3 11S 24W Trego KS**

Job Ticket: 25589

**DST#: 1**

ATTN: Jim Hall

Test Start: 2006.08.14 @ 19:32:37

**Tool Information**

Drill Pipe:	Length: 3664.00 ft	Diameter: 3.80 inches	Volume: 51.40 bbl	Tool Weight: 1800.00 lb
Heavy Wt. Pipe:	Length: 0.00 ft	Diameter: 0.00 inches	Volume: 0.00 bbl	Weight set on Packer: 24000.00 lb
Drill Collar:	Length: 0.00 ft	Diameter: 2.25 inches	Volume: 0.00 bbl	Weight to Pull Loose: 70000.00 lb
			<u>Total Volume: 51.40 bbl</u>	Tool Chased 0.00 ft
Drill Pipe Above KB:	12.00 ft			String Weight: Initial 38000.00 lb
Depth to Top Packer:	3680.00 ft			Final 38000.00 lb
Depth to Bottom Packer:	ft			
Interval between Packers:	36.00 ft			
Tool Length:	64.00 ft			
Number of Packers:	2	Diameter: 6.75 inches		
Tool Comments:				

**Tool Description**

**Length (ft) Serial No. Position Depth (ft) Accum. Lengths**

Tool Description	Length (ft)	Serial No.	Position	Depth (ft)	Accum. Lengths
Change Over Sub	1.00			3653.00	
Shut In Tool	5.00			3658.00	
Hydraulic tool	5.00			3663.00	
Jars	5.00			3668.00	
Safety Joint	3.00			3671.00	
Packer	5.00			3676.00	28.00 Bottom Of Top Packer
Packer	4.00			3680.00	
Stubb	1.00			3681.00	
Perforations	2.00			3683.00	
Recorder	0.00	8017	Inside	3683.00	
Perforations	28.00			3711.00	
Recorder	0.00	13276	Inside	3711.00	
Bullnose	5.00			3716.00	36.00 Bottom Packers & Anchor

**Total Tool Length: 64.00**



**TRILOBITE  
TESTING, INC.**

**DRILL STEM TEST REPORT**

**FLUID SUMMARY**

Ohio Kentucky Oil Corp

**Geyer #4**

110 E Low ry Lane  
Lexington KY 40503

**3 11S 24W Trego KS**

Job Ticket: 25589

**DST#: 1**

ATTN: Jim Hall

Test Start: 2006.08.14 @ 19:32:37

**Mud and Cushion Information**

Mud Type: Gel Chem

Cushion Type:

Oil API:

0 deg API

Mud Weight: 9.00 lb/gal

Cushion Length:

ft

Water Salinity:

22000 ppm

Viscosity: 48.00 sec/qt

Cushion Volume:

bbl

Water Loss: 7.97 in<sup>3</sup>

Gas Cushion Type:

Resistivity: 0.00 ohm.m

Gas Cushion Pressure:

psig

Salinity: 2500.00 ppm

Filter Cake: 2.00 inches

**Recovery Information**

Recovery Table

Length ft	Description	Volume bbl
62.00	SOWCM 1%O 39%W 60%M	0.870

Total Length: 62.00 ft Total Volume: 0.870 bbl

Num Fluid Samples: 0

Num Gas Bombs: 0

Serial #:

Laboratory Name:

Laboratory Location:

Recovery Comments: RW; .364 @ 60 degrees F = 22000 chlorides.

Serial #: 8017

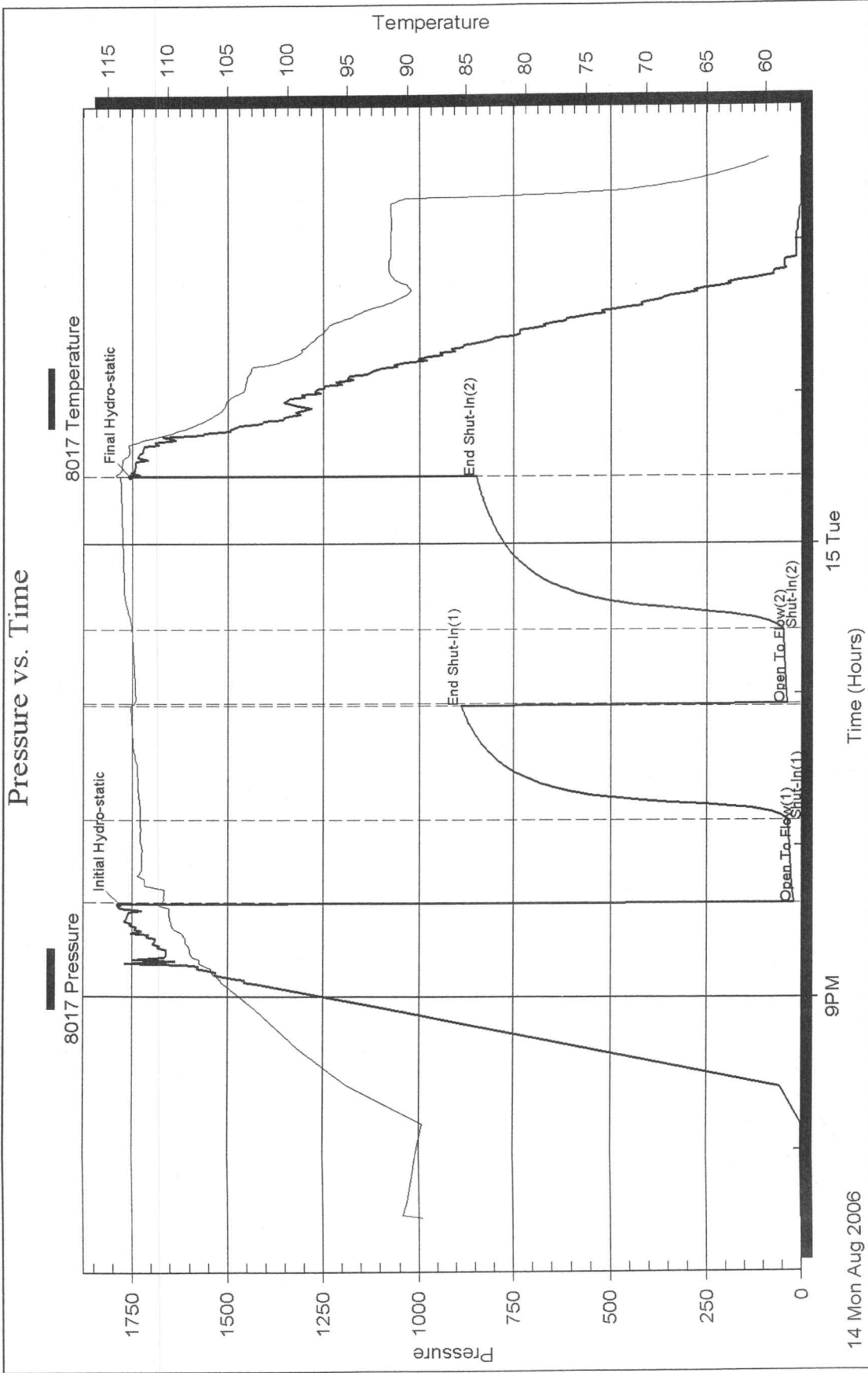
Inside

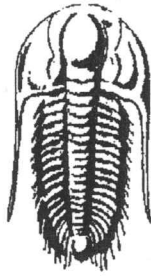
Ohio Kentucky Oil Corp

3 11S 24W Trego KS

DST Test Number: 1

### Pressure vs. Time





**TRILOBITE**  
**TESTING, INC.**

## DRILL STEM TEST REPORT

Prepared For: **Ohio Kentucky Oil Corp**

110 E Lowry Lane  
Lexington KY 40503

ATTN: Jim Hall

**3 11S 24W Trego KS**

**Geyer #4**

Start Date: 2006.08.15 @ 10:53:01

End Date: 2006.08.15 @ 19:23:45

Job Ticket #: 25590                      DST #: 2

Trilobite Testing, Inc

PO Box 362 Hays, KS 67601

ph: 785-625-4778 fax: 785-625-5620

Ohio Kentucky Oil Corp

Geyer #4

3 11S 24W Trego KS

DST # 2

Lansing "E"

2006.08.15



**TRILOBITE  
TESTING, INC**

# DRILL STEM TEST REPORT

Ohio Kentucky Oil Corp

**Geyer #4**

110 E Lowry Lane  
Lexington KY 40503

**3 11S 24W Trego KS**

Job Ticket: 25590

**DST#: 2**

ATTN: Jim Hall

Test Start: 2006.08.15 @ 10:53:01

## GENERAL INFORMATION:

Formation: **Lansing "E"**

Deviated: No Whipstock: ft (KB)

Time Tool Opened: 12:54:00

Time Test Ended: 19:23:45

Test Type: Conventional Bottom Hole

Tester: Chuck Smith

Unit No: 37

Interval: **3724.00 ft (KB) To 3739.00 ft (KB) (TVD)**

Total Depth: 3739.00 ft (KB) (TVD)

Hole Diameter: 7.88 inches Hole Condition: Good

Reference Elevations: 2316.00 ft (KB)

2311.00 ft (CF)

KB to GR/CF: 5.00 ft

**Serial #: 8017**

**Inside**

Press@RunDepth: 39.56 psig @ 3729.00 ft (KB)

Start Date: 2006.08.15

End Date:

2006.08.15

Capacity: 7000.00 psig

Last Calib.: 2006.08.15

Start Time: 10:53:01

End Time:

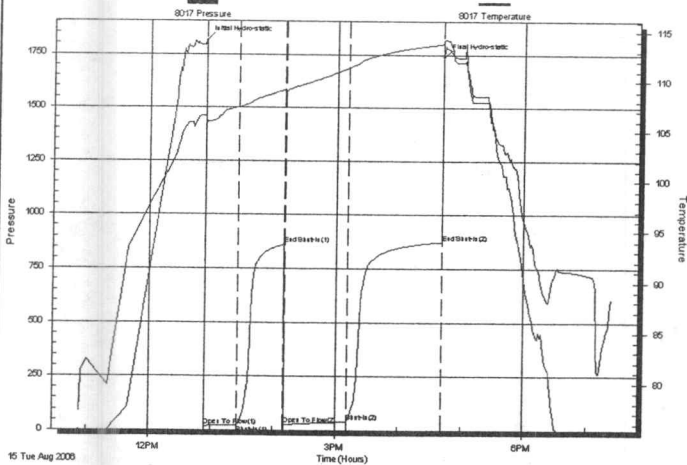
19:23:45

Time On Btm: 2006.08.15 @ 12:53:45

Time Off Btm: 2006.08.15 @ 16:41:30

TEST COMMENT: IF Surface blow built to 4 1/2 "  
ISI No return  
FF 2 " blow built to 8 "  
FSI No return

Pressure vs. Time



## PRESSURE SUMMARY

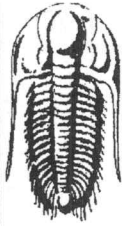
Time (Min.)	Pressure (psig)	Temp (deg F)	Annotation
0	1813.44	106.50	Initial Hydro-static
1	15.89	105.52	Open To Flow (1)
32	23.63	107.44	Shut-In(1)
76	861.56	109.22	End Shut-In(1)
77	24.54	109.04	Open To Flow (2)
138	39.56	111.39	Shut-In(2)
228	873.02	113.81	End Shut-In(2)
228	1738.01	114.12	Final Hydro-static

## Recovery

Length (ft)	Description	Volume (bbl)
50.00	GWOCM 10%G 5%W 40%O 45%M	0.70
10.00	FO 100%O	0.14

## Gas Rates

	Choke (inches)	Pressure (psig)	Gas Rate (Mcf/d)



**TRILOBITE  
TESTING, INC.**

## DRILL STEM TEST REPORT

**TOOL DIAGRAM**

Ohio Kentucky Oil Corp

**Geyer #4**

110 E Lowry Lane  
Lexington KY 40503

**3 11S 24W Trego KS**

Job Ticket: 25590

**DST#: 2**

ATTN: Jim Hall

Test Start: 2006.08.15 @ 10:53:01

### Tool Information

Drill Pipe:	Length: 3711.00 ft	Diameter: 3.80 inches	Volume: 52.06 bbl	Tool Weight: 1600.00 lb
Heavy Wt. Pipe:	Length: 0.00 ft	Diameter: 0.00 inches	Volume: 0.00 bbl	Weight set on Packer: 24000.00 lb
Drill Collar:	Length: 0.00 ft	Diameter: 2.25 inches	Volume: 0.00 bbl	Weight to Pull Loose: 44000.00 lb
		Total Volume: 52.06 bbl		Tool Chased 0.00 ft
Drill Pipe Above KB:	10.00 ft			String Weight: Initial 36000.00 lb
Depth to Top Packer:	3724.00 ft			Final 37000.00 lb
Depth to Bottom Packer:	ft			
Interval between Packers:	15.00 ft			
Tool Length:	38.00 ft			
Number of Packers:	2	Diameter: 6.75 inches		

Tool Comments:

### Tool Description

Tool Description	Length (ft)	Serial No.	Position	Depth (ft)	Accum. Lengths
Change Over Sub	1.00			3702.00	
Shut In Tool	5.00			3707.00	
Hydraulic tool	5.00			3712.00	
Safety Joint	3.00			3715.00	
Packer	5.00			3720.00	23.00 Bottom Of Top Packer
Packer	4.00			3724.00	
Stubb	1.00			3725.00	
Perforations	4.00			3729.00	
Recorder	0.00	8017	Inside	3729.00	
Perforations	5.00			3734.00	
Recorder	0.00	13276	Inside	3734.00	
Bullnose	5.00			3739.00	15.00 Bottom Packers & Anchor

**Total Tool Length: 38.00**



**TRILOBITE  
TESTING, INC.**

## DRILL STEM TEST REPORT

**FLUID SUMMARY**

Ohio Kentucky Oil Corp

**Geyer #4**

110 E Lowry Lane  
Lexington KY 40503

**3 11S 24W Trego KS**

Job Ticket: 25590

**DST#: 2**

ATTN: Jim Hall

Test Start: 2006.08.15 @ 10:53:01

### Mud and Cushion Information

Mud Type: Gel Chem

Cushion Type:

Oil API:

33 deg API

Mud Weight: 9.00 lb/gal

Cushion Length:

ft

Water Salinity:

0 ppm

Viscosity: 50.00 sec/qt

Cushion Volume:

bbl

Water Loss: 8.37 in<sup>3</sup>

Gas Cushion Type:

Resistivity: 0.00 ohm.m

Gas Cushion Pressure:

psig

Salinity: 2500.00 ppm

Filter Cake: 2.00 inches

### Recovery Information

Recovery Table

Length ft	Description	Volume bbl
50.00	GWOCM 10%G 5%W 40%O 45%M	0.701
10.00	FO 100%O	0.140

Total Length: 60.00 ft      Total Volume: 0.841 bbl

Num Fluid Samples: 0

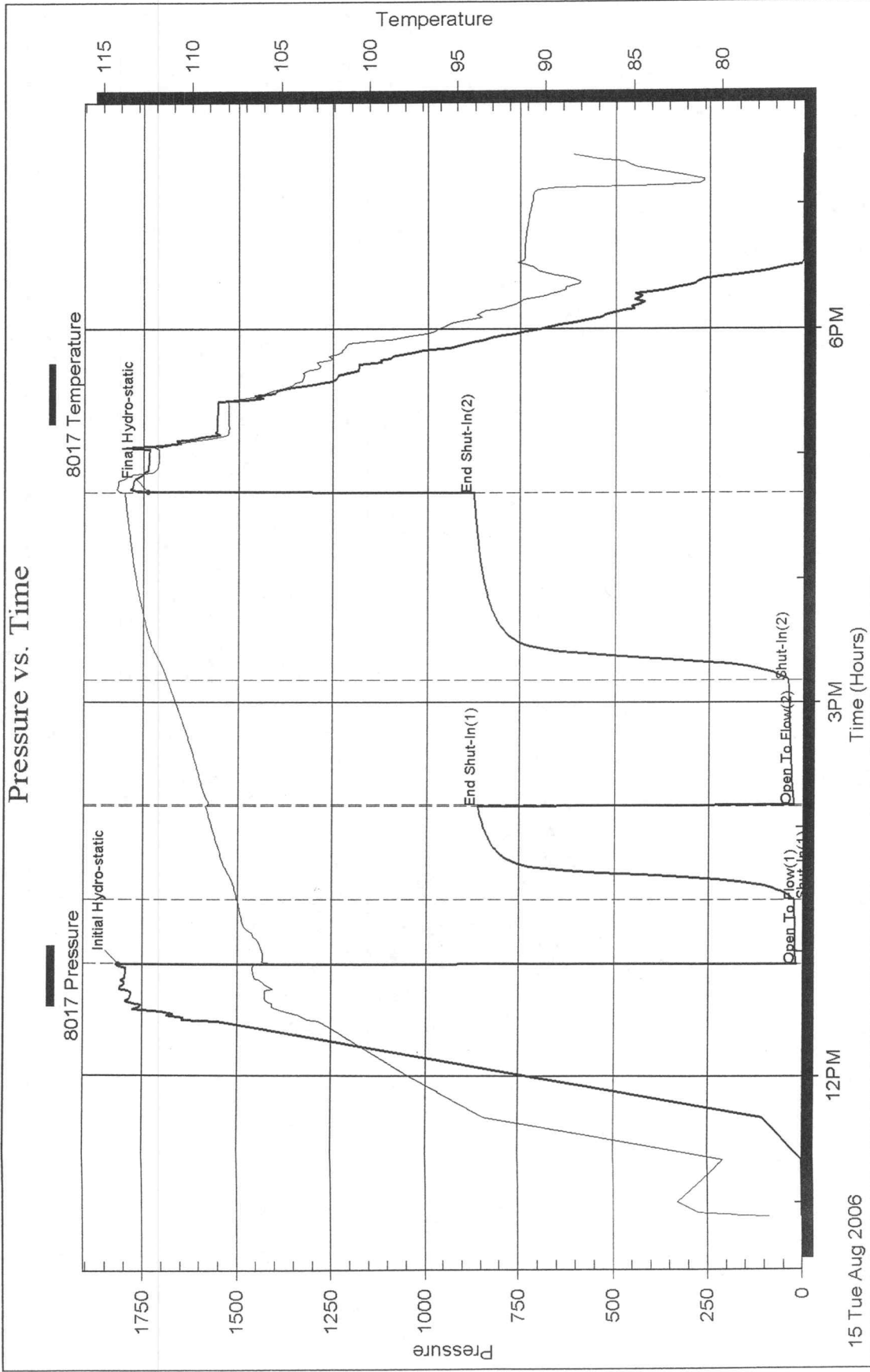
Num Gas Bombs: 0

Serial #:

Laboratory Name:

Laboratory Location:

Recovery Comments: API; 36 @ 90 degrees F = 33.  
330 Feet of gas in pipe.





## DRILL STEM TEST REPORT

Prepared For: **Ohio Kentucky Oil Corp**

110 E Lowry Lane  
Lexington KY 40503

ATTN: Jim Hall

**3 11S 24W Trego KS**

**Geyer #4**

Start Date: 2006.08.16 @ 14:23:03

End Date: 2006.08.17 @ 00:08:32

Job Ticket #: 25591                      DST #: 3

Trilobite Testing, Inc

PO Box 362 Hays, KS 67601

ph: 785-625-4778 fax: 785-625-5620

Ohio Kentucky Oil Corp

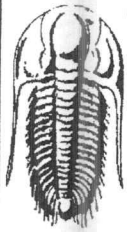
Geyer #4

3 11S 24W Trego KS

DST # 3

Lansing/KC "I,J"

2006.08.16



**TRILOBITE  
TESTING, INC.**

# DRILL STEM TEST REPORT

Ohio Kentucky Oil Corp

**Geyer #4**

110 E Lowry Lane  
Lexington KY 40503

**3 11S 24W Trego KS**

ATTN: Jim Hall

Job Ticket: 25591

**DST#: 3**

Test Start: 2006.08.16 @ 14:23:03

## GENERAL INFORMATION:

Formation: **Lansing/KC "I,J"**

Deviated: No Whipstock: ft (KB)

Time Tool Opened: 17:45:02

Time Test Ended: 00:08:32

Test Type: Conventional Bottom Hole

Tester: Chuck Smith

Unit No: 37

Interval: **3806.00 ft (KB) To 3848.00 ft (KB) (TVD)**

Total Depth: 3848.00 ft (KB) (TVD)

Hole Diameter: 7.88 inches Hole Condition: Good

Reference Elevations: 2316.00 ft (KB)

2311.00 ft (CF)

KB to GR/CF: 5.00 ft

**Serial #: 8017** Inside

Press@RunDepth: 20.51 psig @ 3810.00 ft (KB)

Start Date: 2006.08.16

End Date:

2006.08.17

Capacity: 7000.00 psig

Last Calib.: 2006.08.17

Start Time: 14:23:03

End Time:

00:08:32

Time On Btm: 2006.08.16 @ 17:44:47

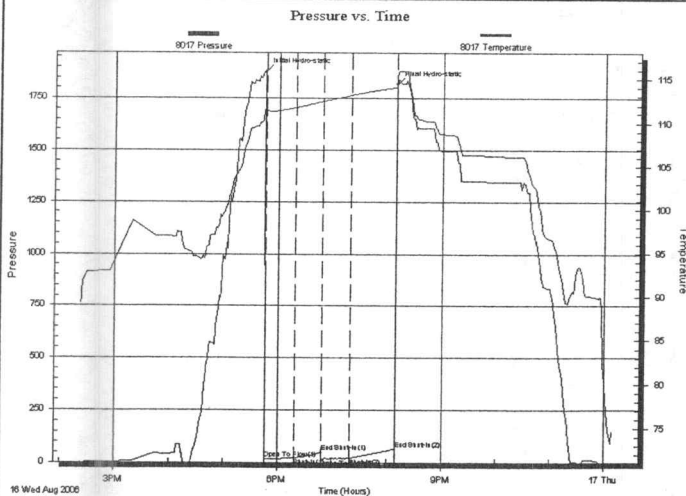
Time Off Btm: 2006.08.16 @ 20:09:02

TEST COMMENT: IF Surface tension blow died @ 3 min

ISI No return

FF No blow

FSI No return



## PRESSURE SUMMARY

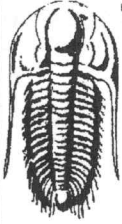
Time (Min.)	Pressure (psig)	Temp (deg F)	Annotation
0	1876.76	111.68	Initial Hydro-static
1	16.96	110.78	Open To Flow (1)
34	19.94	111.73	Shut-In(1)
64	48.32	112.46	End Shut-In(1)
64	15.76	112.47	Open To Flow (2)
95	20.51	113.17	Shut-In(2)
144	65.54	114.07	End Shut-In(2)
145	1815.94	115.04	Final Hydro-static

## Recovery

Length (ft)	Description	Volume (bbl)
10.00	SOCM 2%O 98%M	0.14

## Gas Rates

	Choke (inches)	Pressure (psig)	Gas Rate (Mcf/d)



**TRILOBITE  
TESTING, INC.**

## DRILL STEM TEST REPORT

TOOL DIAGRAM

Ohio Kentucky Oil Corp

**Geyer #4**

110 E Lowry Lane  
Lexington KY 40503

**3 11S 24W Trego KS**

Job Ticket: 25591

**DST#: 3**

ATTN: Jim Hall

Test Start: 2006.08.16 @ 14:23:03

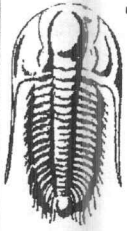
### Tool Information

Drill Pipe:	Length: 3781.00 ft	Diameter: 3.80 inches	Volume: 53.04 bbl	Tool Weight: 1600.00 lb
Heavy Wt. Pipe:	Length: 0.00 ft	Diameter: 0.00 inches	Volume: 0.00 bbl	Weight set on Packer: 25000.00 lb
Drill Collar:	Length: 0.00 ft	Diameter: 2.25 inches	Volume: 0.00 bbl	Weight to Pull Loose: 42000.00 lb
		Total Volume: 53.04 bbl		Tool Chased 0.00 ft
Drill Pipe Above KB:	3.00 ft			String Weight: Initial 36000.00 lb
Depth to Top Packer:	3806.00 ft			Final 36000.00 lb
Depth to Bottom Packer:	ft			
Interval between Packers:	42.00 ft			
Tool Length:	70.00 ft			
Number of Packers:	2	Diameter: 6.75 inches		
Tool Comments:				

### Tool Description

Tool Description	Length (ft)	Serial No.	Position	Depth (ft)	Accum. Lengths
Change Over Sub	1.00			3779.00	
Shut In Tool	5.00			3784.00	
Hydraulic tool	5.00			3789.00	
Jars	5.00			3794.00	
Safety Joint	3.00			3797.00	
Packer	5.00			3802.00	28.00 Bottom Of Top Packer
Packer	4.00			3806.00	
Stubb	1.00			3807.00	
Perforations	3.00			3810.00	
Recorder	0.00	8017	Inside	3810.00	
Change Over Sub	1.00			3811.00	
Drill Pipe	31.00			3842.00	
Change Over Sub	1.00			3843.00	
Recorder	0.00	13276	Inside	3843.00	
Bullhose	5.00			3848.00	42.00 Bottom Packers & Anchor

**Total Tool Length: 70.00**



**TRILOBITE  
TESTING, INC**

**DRILL STEM TEST REPORT**

**FLUID SUMMARY**

Ohio Kentucky Oil Corp

**Geyer #4**

110 E Low ry Lane  
Lexington KY 40503

**3 11S 24W Trego KS**

Job Ticket: 25591

**DST#: 3**

ATTN: Jim Hall

Test Start: 2006.08.16 @ 14:23:03

**Mud and Cushion Information**

Mud Type: Gel Chem

Cushion Type:

Oil API:

0 deg API

Mud Weight: 9.00 lb/gal

Cushion Length:

ft

Water Salinity:

0 ppm

Viscosity: 49.00 sec/qt

Cushion Volume:

bbl

Water Loss: 9.18 in<sup>3</sup>

Gas Cushion Type:

Resistivity: 0.00 ohm.m

Gas Cushion Pressure:

psig

Salinity: 3000.00 ppm

Filter Cake: 2.00 inches

**Recovery Information**

Recovery Table

Length ft	Description	Volume bbl
10.00	SOCM2%O 98%M	0.140

Total Length: 10.00 ft      Total Volume: 0.140 bbl

Num Fluid Samples: 0

Num Gas Bombs: 0

Serial #:

Laboratory Name:

Laboratory Location:

Recovery Comments:

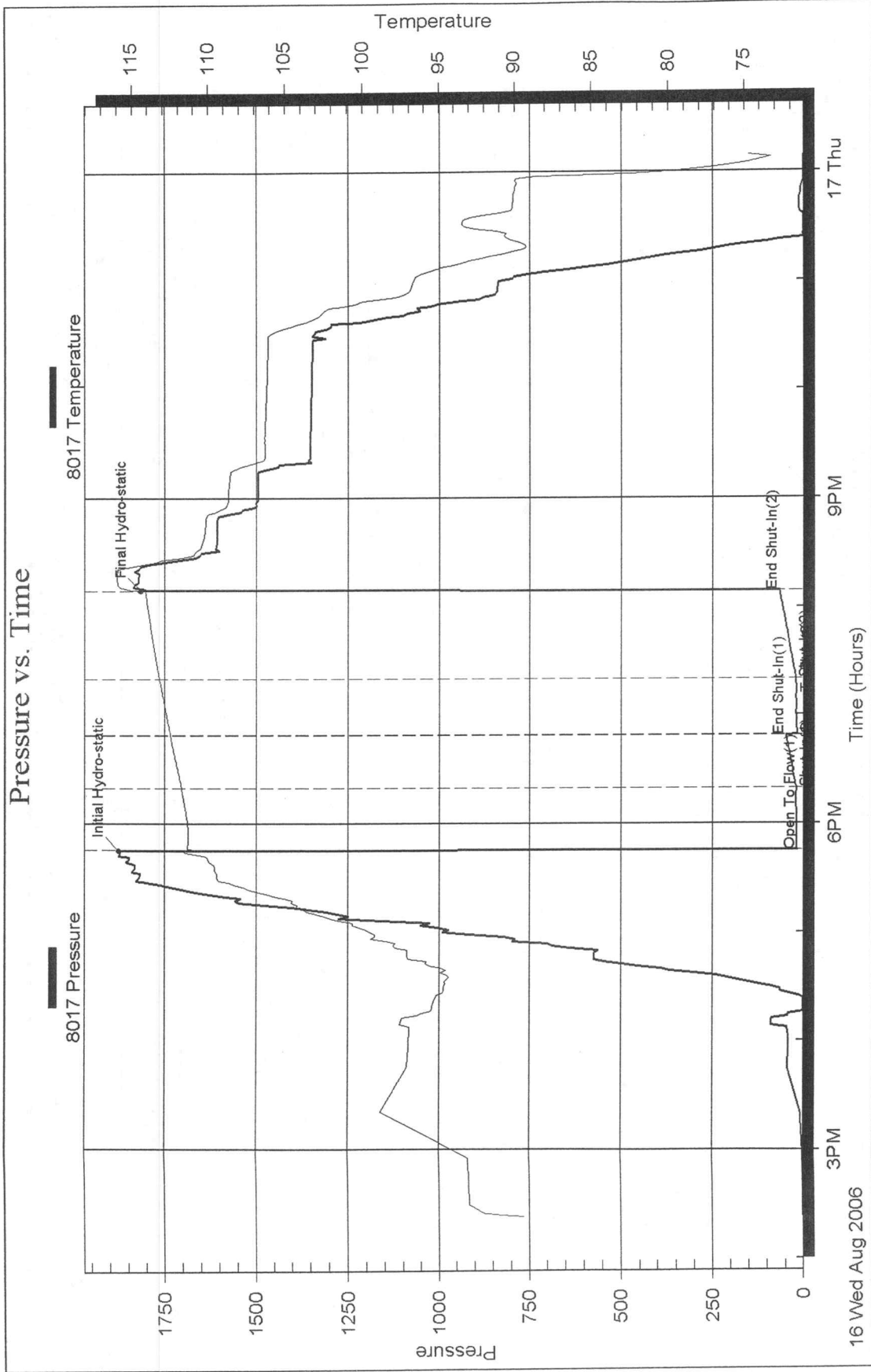
Serial #: 8017

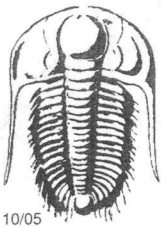
Inside

Ohio Kentucky Oil Corp

3 11S 24W Trego KS

DST Test Number: 3





# TRILOBITE TESTING INC.

P.O. Box 362 • Hays, Kansas 67601

9144

25589

## Test Ticket

Well Name & No. Geyer #4 Test No. 1 Date 8-14-06  
 Company Ohio-Kentucky Oil Corp. Zone Tested Lansing "B,C"  
 Address 110 E. Lowry Lane, Lexington, KY 40503 Elevation 2316 KB 2311 GL  
 Co. Rep / Geo. Jim Hall Rig American Eagle #3  
 Location: Sec. 3 Twp. 11s Rge. 24w Co. Trego State KS  
 Comment: \_\_\_\_\_ Release date / time: \_\_\_\_\_

Interval Tested 3680 to 3716 Initial Str Wt./Lbs. 38,000 Unseated Str Wt./Lbs. 38,000  
 Anchor Length 36 Wt. Set Lbs. 24,000 Wt. Pulled Loose/Lbs. 70,000  
 Top Packer Depth 3676 Tool Weight 1,800  
 Bottom Packer Depth 3680 Hole Size 7 7/8" X Rubber Size 6 3/4" X  
 Total Depth 3716 Wt. Pipe Run 0 Drill Collar Run 0  
 Mud Wt. 8.9 LCM 1 Vis. 48 WL 8.0 Drill Pipe Size 4 1/2 XH Ft. Run 3,664

Blow Description IF: Weak surface blow 1/2"  
ISI: No return.  
FF: Weak blow 1/2"  
FSI: No return.

Recovery - Total Feet 62 GIP - Ft. in DC 0 Ft. in DP 62  
 Rec. 62 Feet of SOWCM %gas 1 %oil 39 %water 60 %mud  
 Rec. \_\_\_\_\_ Feet of \_\_\_\_\_ %gas \_\_\_\_\_ %oil \_\_\_\_\_ %water \_\_\_\_\_ %mud  
 Rec. \_\_\_\_\_ Feet of \_\_\_\_\_ %gas \_\_\_\_\_ %oil \_\_\_\_\_ %water \_\_\_\_\_ %mud  
 Rec. \_\_\_\_\_ Feet of \_\_\_\_\_ %gas \_\_\_\_\_ %oil \_\_\_\_\_ %water \_\_\_\_\_ %mud  
 Rec. \_\_\_\_\_ Feet of \_\_\_\_\_ %gas \_\_\_\_\_ %oil \_\_\_\_\_ %water \_\_\_\_\_ %mud  
 BHT 114 °F Gravity - °API D @ - °F Corrected Gravity - °API  
 RW .364 @ 60 °F Chlorides 22,000 ppm Recovery 22,000 Chlorides 2,500 ppm System

	AK-1	Alpine	Recorder No.	Test
(A) Initial Hydrostatic Mud		<u>1,802</u> PSI	<u>8017</u>	<u>X</u> <u>1000</u>
(B) First Initial Flow Pressure		<u>20</u> PSI	(depth) <u>3683</u>	Jars <u>X</u> <u>250</u>
(C) First Final Flow Pressure		<u>36</u> PSI	Recorder No. <u>13276</u>	Safety Jt. <u>X</u> <u>75</u>
(D) Initial Shut-In Pressure		<u>888</u> PSI	(depth) <u>3,711</u>	Circ Sub <u>X</u> <u>N/C</u>
(E) Second Initial Flow Pressure		<u>38</u> PSI	Recorder No. _____	Sampler _____
(F) Second Final Flow Pressure		<u>48</u> PSI	(depth) _____	Straddle _____
(G) Final Shut-In Pressure		<u>847</u> PSI	<b>Initial Opening</b> <u>30</u>	Ext. Packer _____
(Q) Final Hydrostatic Mud		<u>1,756</u> PSI	Initial Shut-In <u>45</u>	Shale Packer _____
			Final Flow <u>30</u>	Ruined Packer _____
			Final Shut-In <u>60</u>	Mileage <u>91224RT</u> <u>117.50</u>
			<b>T-On Location</b> <u>18:29</u>	Sub Total: <u>1442.50</u>
			T-Started <u>19:32</u>	Std. By <u>-</u>
			T-Open <u>21:37</u>	Acc. Chg: _____
			T-Pulled <u>00:27</u>	Other: _____
			T-Out <u>02:33</u>	Total: _____

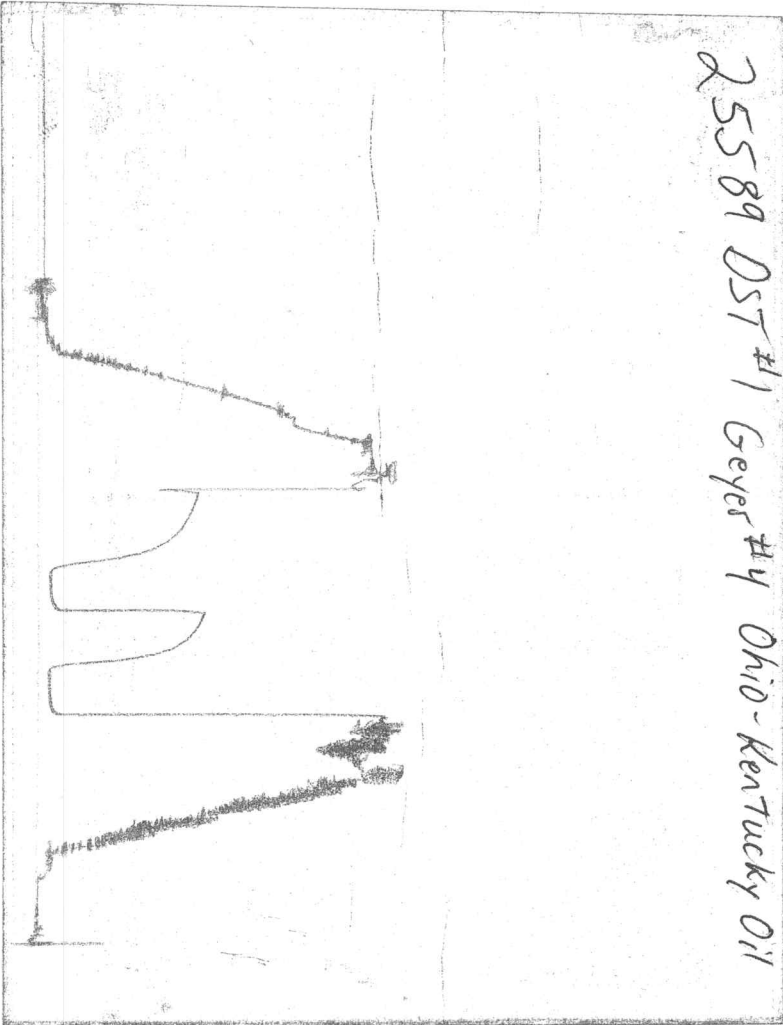
TRILOBITES TESTING INC. SHALL NOT BE LIABLE FOR DAMAGED OF ANY KIND OF THE PROPERTY OR PERSONNEL OF THE ONE FOR WHOM A TEST IS MADE, OR FOR ANY LOSS SUFFERED OR SUSTAINED, DIRECTLY OR INDIRECTLY, THROUGH THE USE OF ITS EQUIPMENT, OR ITS STATEMENTS OR OPINION CONCERNING THE RESULTS OF ANY TEST. TOOLS LOST OR DAMAGED IN THE HOLE SHALL BE PAID FOR AT COST BY THE PARTY FOR WHOM THE TEST IS MADE.

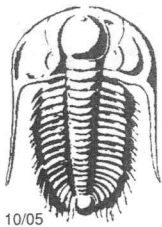
Approved By JR Hall  
 Our Representative Chuck Smith

**CHART PAGE**

This is a photocopy of the actual AK-1 recorder chart.

25589 DST #1 Geyer #4 Ohio-Kentucky Oil





# TRILOBITE TESTING INC.

P.O. Box 362 • Hays, Kansas 67601

25590

## Test Ticket

Well Name & No. Geyer #4 Test No. 2 Date 8-15-06  
 Company Ohio-Kentucky Oil Corp. Zone Tested Lansing "E"  
 Address 110 E. Lowry Lane, Lexington, KY 40503 Elevation 2316 KB 2311 GL  
 Co. Rep / Geo. Jim Hall Rig American Eagle #3  
 Location: Sec. 3 Twp. 11s Rge. 24w Co. Trego State KS  
 Comment: \_\_\_\_\_ Release date / time: \_\_\_\_\_

Interval Tested 3724 to 3739 Initial Str Wt./Lbs. 36,000 Unseated Str Wt/Lbs. 37,000  
 Anchor Length 15 Wt. Set Lbs. 24,000 Wt. Pulled Loose/Lbs. 44,000  
 Top Packer Depth 3720 Tool Weight 1,600  
 Bottom Packer Depth 3724 Hole Size 7 7/8" X Rubber Size 6 3/4" X  
 Total Depth 3739 Wt. Pipe Run 0 Drill Collar Run 0  
 Mud Wt. 9.1 LCM 1 Vis. 50 WL 8.4 Drill Pipe Size 4 1/2 XH Ft. Run 3,711  
 Blow Description IF: Surface blow built to 4 1/2"

ISI: No return.

FF: 2" blow built to 8"

FSI: No return

Recovery - Total Feet 60 GIP 330 Ft. in DC 0 Ft. in DP 60  
 Rec. 10 Feet of FO %gas 100 %oil \_\_\_\_\_ %water \_\_\_\_\_ %mud \_\_\_\_\_  
 Rec. 50 Feet of GWOCM 10 %gas 40 %oil 5 %water 45 %mud \_\_\_\_\_  
 Rec. \_\_\_\_\_ Feet of \_\_\_\_\_ %gas \_\_\_\_\_ %oil \_\_\_\_\_ %water \_\_\_\_\_ %mud \_\_\_\_\_  
 Rec. \_\_\_\_\_ Feet of \_\_\_\_\_ %gas \_\_\_\_\_ %oil \_\_\_\_\_ %water \_\_\_\_\_ %mud \_\_\_\_\_  
 Rec. \_\_\_\_\_ Feet of \_\_\_\_\_ %gas \_\_\_\_\_ %oil \_\_\_\_\_ %water \_\_\_\_\_ %mud \_\_\_\_\_  
 BHT 114 °F Gravity 36 °API D @ 90 °F Corrected Gravity 33 °API  
 RW — @ — °F Chlorides — ppm Recovery — Chlorides 2,500 ppm System

	AK-1	Alpine	Recorder No.	Test
(A) Initial Hydrostatic Mud	<u>1,818</u>	PSI	<u>8017</u>	<u>X</u> <u>1,100"</u>
(B) First Initial Flow Pressure	<u>16</u>	PSI	(depth) <u>3,729</u>	Jars _____
(C) First Final Flow Pressure	<u>24</u>	PSI	Recorder No. <u>13276</u>	Safety Jt. <u>X</u> <u>75"</u>
(D) Initial Shut-In Pressure	<u>862</u>	PSI	(depth) <u>3734</u>	Circ Sub <u>X</u> <u>N/C</u>
(E) Second Initial Flow Pressure	<u>25</u>	PSI	Recorder No. _____	Sampler _____
(F) Second Final Flow Pressure	<u>40</u>	PSI	(depth) _____	Straddle _____
(G) Final Shut-In Pressure	<u>873</u>	PSI	<b>Initial Opening</b> <u>30</u>	Ext. Packer _____
(Q) Final Hydrostatic Mud	<u>1,798</u>	PSI	Initial Shut-In <u>45</u>	Shale Packer _____

TRILOBITE TESTING INC. SHALL NOT BE LIABLE FOR DAMAGED OF ANY KIND OF THE PROPERTY OR PERSONNEL OF THE ONE FOR WHOM A TEST IS MADE, OR FOR ANY LOSS SUFFERED OR SUSTAINED, DIRECTLY OR INDIRECTLY, THROUGH THE USE OF ITS EQUIPMENT, OR ITS STATEMENTS OR OPINION CONCERNING THE RESULTS OF ANY TEST. TOOLS LOST OR DAMAGED IN THE HOLE SHALL BE PAID FOR AT COST BY THE PARTY FOR WHOM THE TEST IS MADE.

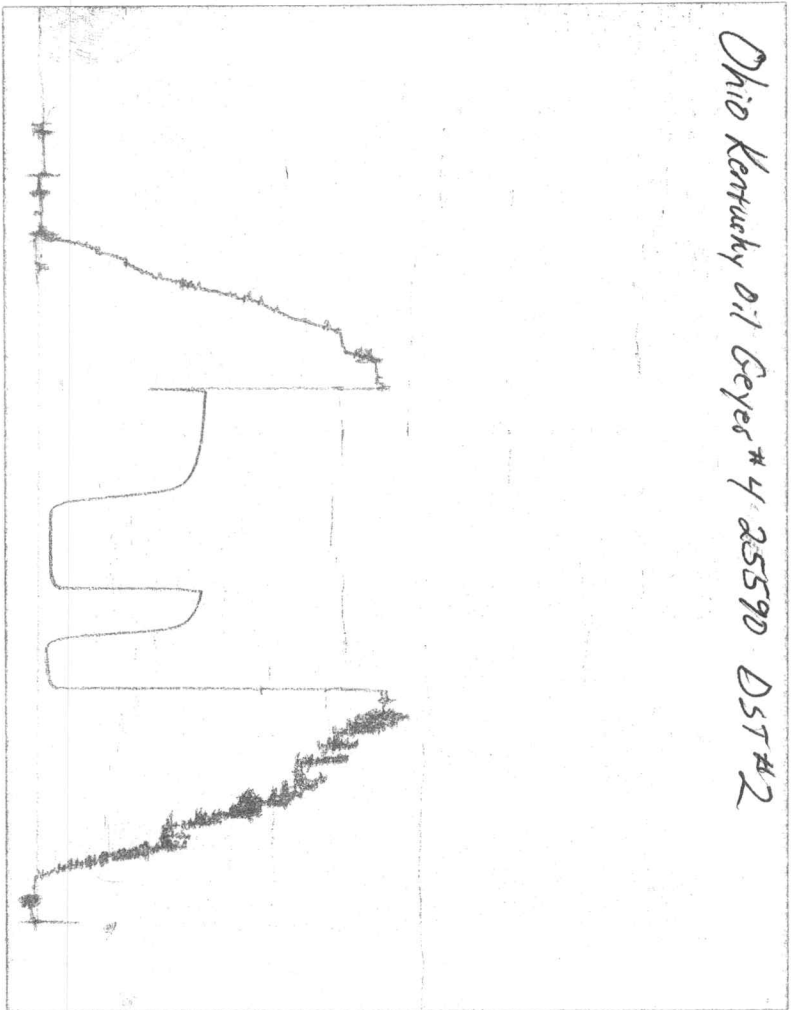
Approved By Jim Hall  
 Our Representative Chuck Smith

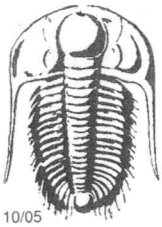
Final Flow 60  
 Final Shut-In 90  
**T-On Location** 10:30am  
 T-Started 10:53am  
 T-Open 12:55  
 T-Pulled 16:42  
 T-Out 19:25  
 Mileage x32 40  
 Sub Total: 1215  
 Std. By X/hr 50  
 Acc. Chg: \_\_\_\_\_  
 Other: \_\_\_\_\_  
 Total: 1265

**CHART PAGE**

This is a photocopy of the actual AK-1 recorder chart.

*Ohio Kentucky Oil Geysers # 4 25590 DST # 2*





# TRILOBITE TESTING INC.

25591

P.O. Box 362 • Hays, Kansas 67601

## Test Ticket

Well Name & No. Geyer #4 Test No. 3 Date 8-16-06  
 Company Ohio-Kentucky Oil Corp. Zone Tested Lassing/KC "I+J"  
 Address 110 E. Lowry Lane, Lexington, KY 40503 Elevation 2316 KB 2311 GL  
 Co. Rep / Geo. Jim Hall Rig American Eagle #3  
 Location: Sec. 3 Twp. 11s Rge. 24w Co. Trego State KS  
 Comment: \_\_\_\_\_ Release date / time: \_\_\_\_\_

Interval Tested 3806 to 3848 Initial Str Wt./Lbs. 36,000 Unseated Str Wt./Lbs. 36,000  
 Anchor Length 42 Wt. Set Lbs. 25,000 Wt. Pulled Loose/Lbs. 42,000  
 Top Packer Depth 3802 Tool Weight 1,600  
 Bottom Packer Depth 3806 Hole Size 7 7/8" X Rubber Size 6 3/4" X  
 Total Depth 3848 Wt. Pipe Run 0 Drill Collar Run 0  
 Mud Wt. 9.3 LCM 1 Vis. 49 WL 9.2 Drill Pipe Size 4 1/2 XH Ft. Run 3781

Blow Description IF: Surface tension blow did @ 3 min.  
ISI: No return.  
FF: No blow.  
FST: No return.

Recovery - Total Feet 10 GIP 0 Ft. in DC 0 Ft. in DP 10  
 Rec. 10 Feet of SOCM %gas 2 %oil \_\_\_\_\_ %water 98 %mud \_\_\_\_\_  
 Rec. \_\_\_\_\_ Feet of \_\_\_\_\_ %gas \_\_\_\_\_ %oil \_\_\_\_\_ %water \_\_\_\_\_ %mud \_\_\_\_\_  
 Rec. \_\_\_\_\_ Feet of \_\_\_\_\_ %gas \_\_\_\_\_ %oil \_\_\_\_\_ %water \_\_\_\_\_ %mud \_\_\_\_\_  
 Rec. \_\_\_\_\_ Feet of \_\_\_\_\_ %gas \_\_\_\_\_ %oil \_\_\_\_\_ %water \_\_\_\_\_ %mud \_\_\_\_\_  
 Rec. \_\_\_\_\_ Feet of \_\_\_\_\_ %gas \_\_\_\_\_ %oil \_\_\_\_\_ %water \_\_\_\_\_ %mud \_\_\_\_\_  
 BHT 114 °F Gravity \_\_\_\_\_ °API D @ \_\_\_\_\_ °F Corrected Gravity \_\_\_\_\_ °API  
 RW \_\_\_\_\_ @ \_\_\_\_\_ °F Chlorides \_\_\_\_\_ ppm Recovery \_\_\_\_\_ Chlorides 3,000 ppm System

	AK-1	Alpine	Recorder No.	Test
(A) Initial Hydrostatic Mud		<u>1,877</u> PSI	<u>8017</u>	<u>X</u> <u>1,100<sup>00</sup></u>
(B) First Initial Flow Pressure		<u>17</u> PSI	(depth) <u>3810</u>	Jars _____
(C) First Final Flow Pressure		<u>20</u> PSI	Recorder No. <u>13276</u>	Safety Jt. <u>X</u> <u>75<sup>00</sup></u>
(D) Initial Shut-In Pressure		<u>48</u> PSI	(depth) <u>3,843</u>	Circ Sub <u>X</u> <u>N/C</u>
(E) Second Initial Flow Pressure		<u>16</u> PSI	Recorder No. _____	Sampler _____
(F) Second Final Flow Pressure		<u>21</u> PSI	(depth) _____	Straddle _____
(G) Final Shut-In Pressure		<u>66</u> PSI	<b>Initial Opening</b> <u>30</u>	Ext. Packer _____
(Q) Final Hydrostatic Mud		<u>1,837</u> PSI	Initial Shut-In <u>30</u>	Shale Packer _____
			Final Flow <u>30</u>	Ruined Packer <u>X</u> <u>200<sup>00</sup></u>
			Final Shut-In <u>30</u>	Mileage <u>32</u> <u>40</u>

TRILOBITE TESTING INC. SHALL NOT BE LIABLE FOR DAMAGED OF ANY KIND OF THE PROPERTY OR PERSONNEL OF THE ONE FOR WHOM A TEST IS MADE, OR FOR ANY LOSS SUFFERED OR SUSTAINED, DIRECTLY OR INDIRECTLY, THROUGH THE USE OF ITS EQUIPMENT, OR ITS STATEMENTS OR OPINION CONCERNING THE RESULTS OF ANY TEST. TOOLS LOST OR DAMAGED IN THE HOLE SHALL BE PAID FOR AT COST BY THE PARTY FOR WHOM THE TEST IS MADE.

Approved By JR Hall  
 Our Representative Chuck Smith

**T-On Location** 13:11 Sub Total: 1415  
 T-Started 14:23 Std. By X 2.25 137.50  
 T-Open 17:45 Acc. Chg: \_\_\_\_\_  
 T-Pulled 20:09 Other: \_\_\_\_\_  
 T-Out 00:08 Total: \$1552.50

**CHART PAGE**

This is a photocopy of the actual AK-1 recorder chart.

Ohio-  
Kentucky Geyer #4 DST #3 25591

