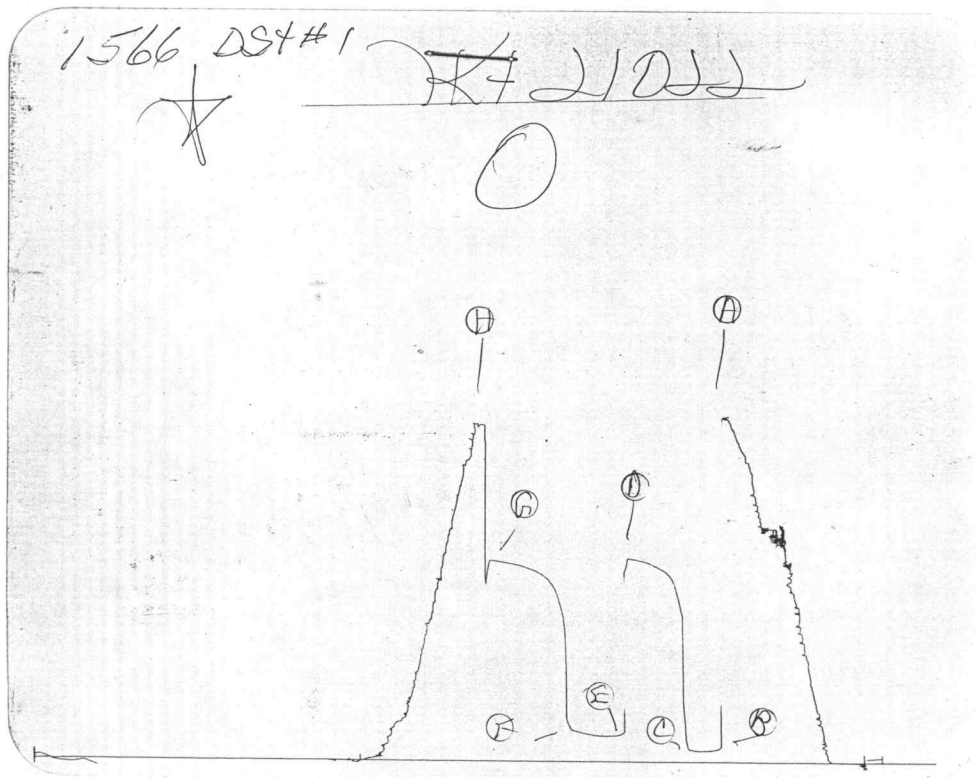


Inside Recorder



Outside Recorder

DST REPORT

GENERAL INFORMATION

DATE : 8-15-95	TICKET : 21022
CUSTOMER : LANDMARK OIL EXPLORATION	LEASE : WESSEMILLER
WELL : #1-24 TEST: 1	GEOLOGIST: CAULK
ELEVATION: 3153 KB	FORMATION: LANSING-KANSAS CITY
SECTION : 24	TOWNSHIP : 11
RANGE : 34W COUNTY: LOGAN	STATE : KS
GAUGE SN#: 1566 RANGE : 4300	CLOCK : 12

WELL INFORMATION

PERFORATION INTERVAL FROM:	4062.00 ft	TO:	4100.00 ft	TVD:	4100.0 ft
DEPTH OF SELECTIVE ZONE:				TEST TYPE:	OIL
DEPTH OF RECORDERS:	4054.0 ft		4062.0 ft		
TEMPERATURE:	118.0				
DRILL COLLAR LENGTH:	0.0 ft	I.D.:			0.000 in
WEIGHT PIPE LENGTH :	0.0 ft	I.D.:			0.000 in
DRILL PIPE LENGTH :	4028.0 ft	I.D.:			3.800 in
TEST TOOL LENGTH :	28.0 ft	TOOL SIZE :			5.500 in
ANCHOR LENGTH :	44.0 ft	ANCHOR SIZE:			5.500 in
SURFACE CHOKE SIZE :	0.750 in	BOTTOM CHOKE SIZE:			0.750 in
MAIN HOLE SIZE :	7.875 in	TOOL JOINT SIZE :			4.5XH
PACKER DEPTH:	4051.0 ft	SIZE:			6.630 in
PACKER DEPTH:	4056.0 ft	SIZE:			6.630 in
PACKER DEPTH:	0.0 ft	SIZE:			0.000 in
PACKER DEPTH:	0.0 ft	SIZE:			0.000 in

MUD INFORMATION

DRILLING CON. : L D DAVIS DRILLING	VISCOSITY : 44.00 cp
MUD TYPE : CHEMICAL	WATER LOSS: 9.000 cc
WEIGHT : 9.100 ppg	
CHLORIDES : 3200 ppm	SERIAL NUMBER: 411
JARS-MAKE : WTC	REVERSED OUT?: NO
DID WELL FLOW?: NO	

COMMENTS

Comment

INITIAL FLOW PERIOD-WEAK BLOW BUILDING TO A 10 INCH BLOW. FINAL FLOW PERIOD-WEAK BLOW BUILDING TO 5 INCH BLOW.

DST REPORT (CONTINUED)

FLUID RECOVERY

Feet of Fluid	% Oil	% Gas	% Water	% Mud	Comments
105.0	0.0	0.0	0.0	100.0	MUD
120.0	0.0	0.0	55.0	45.0	MUD CUT WATER
300.0	0.0	0.0	100.0	0.0	WATER
0.0	0.0	0.0	0.0	0.0	CHLORIDES 48,000 PPM

RATE INFORMATION

OIL VOLUME:	0.0000 STB	TOTAL FLOW TIME:	65.0000 min.
GAS VOLUME:	0.0000 SCF	AVERAGE OIL RATE:	0.0000 STB/D
MUD VOLUME:	2.2302 STB	AVERAGE WATER RATE:	130.5098 STB/D
WATER VOLUME:	5.1336 STB		
TOTAL FLUID :	7.3638 STB		

FIELD TIME & PRESSURE INFORMATION

INITIAL HYDROSTATIC PRESSURE: 2047.00

Description	Duration	p1	p End
INITIAL FLOW	30.00	75.00	75.00
INITIAL SHUT-IN	45.00		1184.00
FINAL FLOW	45.00	162.00	194.00
FINAL SHUT-IN	60.00		1184.00

FINAL HYDROSTATIC PRESSURE: 1993.00

OFFICE TIME & PRESSURE INFORMATION

INITIAL HYDROSTATIC PRESSURE: 2018.00

Description	Duration	p1	p End
INITIAL FLOW	25.00	84.00	75.00
INITIAL SHUT-IN	51.00		1195.00
FINAL FLOW	40.00	173.00	185.00
FINAL SHUT-IN	66.00		1175.00

FINAL HYDROSTATIC PRESSURE: 1983.00

PRESSURE TRANSIENT REPORT

GENERAL INFORMATION

DATE : 8-15-95	TICKET : 21022
CUSTOMER : LANDMARK OIL EXPLORATION	LEASE : WESSEMILLER
WELL : #1-24 TEST: 1	GEOLOGIST: CAULK
ELEVATION: 3153 KB	FORMATION: LANSING-KANSAS CITY
SECTION : 24	TOWNSHIP : 11
RANGE : 34W COUNTY: LOGAN	STATE : KS
GAUGE SN#: 1566 RANGE : 4300	CLOCK : 12

INITIAL FLOW

<u>Time (min)</u>	<u>Pressure</u>	<u>Delta P</u>
0.00	84.00	84.00
5.00	70.00	-14.00
10.00	67.00	-3.00
15.00	67.00	0.00
20.00	70.00	3.00
25.00	75.00	5.00

INITIAL SHUT IN

<u>Time (min)</u>	<u>Pressure</u>	<u>Delta P</u>	<u>Horner T</u>
3.00	253.00	253.00	0.00
6.00	842.00	589.00	0.00
9.00	944.00	102.00	0.00
12.00	1021.00	77.00	0.00
15.00	1072.00	51.00	0.00
18.00	1096.00	24.00	0.00
21.00	1118.00	22.00	0.00
24.00	1135.00	17.00	0.00
27.00	1146.00	11.00	0.00
30.00	1156.00	10.00	0.00
33.00	1165.00	9.00	0.00
36.00	1173.00	8.00	0.00
39.00	1179.00	6.00	0.00
42.00	1184.00	5.00	0.00
45.00	1187.00	3.00	0.00
48.00	1193.00	6.00	0.00
51.00	1195.00	2.00	0.00

PRESSURE TRANSIENT REPORT (CONTINUED)

FINAL FLOW

Time (min)	Pressure	Delta P
0.00	173.00	173.00
5.00	158.00	-15.00
10.00	156.00	-2.00
15.00	156.00	0.00
20.00	156.00	0.00
25.00	161.00	5.00
30.00	167.00	6.00
35.00	175.00	8.00
40.00	185.00	10.00

FINAL SHUT IN

Time (min)	Pressure	Delta P	Horner T
3.00	238.00	238.00	0.00
6.00	787.00	549.00	0.00
9.00	897.00	110.00	0.00
12.00	966.00	69.00	0.00
15.00	1013.00	47.00	0.00
18.00	1051.00	38.00	0.00
21.00	1075.00	24.00	0.00
24.00	1092.00	17.00	0.00
27.00	1107.00	15.00	0.00
30.00	1116.00	9.00	0.00
33.00	1124.00	8.00	0.00
36.00	1135.00	11.00	0.00
39.00	1141.00	6.00	0.00
42.00	1148.00	7.00	0.00
45.00	1153.00	5.00	0.00
48.00	1158.00	5.00	0.00
51.00	1161.00	3.00	0.00
54.00	1165.00	4.00	0.00
57.00	1169.00	4.00	0.00
60.00	1171.00	2.00	0.00
63.00	1173.00	2.00	0.00
66.00	1175.00	2.00	0.00

DST REPORT

GENERAL INFORMATION

DATE : 8-16-95	TICKET : 21023
CUSTOMER : LANDMARK OIL EXPLORATION	LEASE : WESSEMILLER
WELL : #1-24 TEST: 2	GEOLOGIST: CAULK
ELEVATION: 3153 KB	FORMATION: KANSAS CITY "I"
SECTION : 24	TOWNSHIP : 11
RANGE : 34W COUNTY: LOGAN	STATE : KS
GAUGE SN#: 1051 RANGE : 4250	CLOCK : 12

WELL INFORMATION

PERFORATION INTERVAL FROM: 4239.00 ft	TO: 4277.00 ft	TVD: 4277.0 ft
DEPTH OF SELECTIVE ZONE:		TEST TYPE: OIL
DEPTH OF RECORDERS: 4267.0 ft	4270.0 ft	
TEMPERATURE: 122.0		

DRILL COLLAR LENGTH: 0.0 ft	I.D.:	0.000 in
WEIGHT PIPE LENGTH : 0.0 ft	I.D.:	0.000 in
DRILL PIPE LENGTH : 4211.0 ft	I.D.:	3.800 in
TEST TOOL LENGTH : 28.0 ft	TOOL SIZE :	5.500 in
ANCHOR LENGTH : 38.0 ft	ANCHOR SIZE:	5.500 in
SURFACE CHOKE SIZE : 0.750 in	BOTTOM CHOKE SIZE:	0.750 in
MAIN HOLE SIZE : 7.875 in	TOOL JOINT SIZE :	4.5XH
PACKER DEPTH: 4234.0 ft	SIZE:	6.630 in
PACKER DEPTH: 4239.0 ft	SIZE:	6.630 in
PACKER DEPTH: 0.0 ft	SIZE:	0.000 in
PACKER DEPTH: 0.0 ft	SIZE:	0.000 in

MUD INFORMATION

DRILLING CON. : L D DAVIS DRILLING	
MUD TYPE : CHEMICAL	VISCOSITY : 42.00 cp
WEIGHT : 9.200 ppg	WATER LOSS: 9.000 cc
CHLORIDES : 4200 ppm	
JARS-MAKE : WTC	SERIAL NUMBER: 411
DID WELL FLOW?: NO	REVERSED OUT?: NO

COMMENTS

Comment

INITIAL FLOW PERIOD-STRONG BLOW IN 7 MINUTES.
FINAL FLOW PERIOD-STRONG BLOW. NO GAS TO SURFACE.

DST REPORT (CONTINUED)

FLUID RECOVERY

Feet of Fluid	% Oil	% Gas	% Water	% Mud	Comments
0.0	0.0	0.0	0.0	0.0	810FT GAS ABOVE FLUID
240.0	100.0	0.0	0.0	0.0	FREE OIL 38 GRAVITY COR.
120.0	30.0	50.0	0.0	20.0	HEAVY GAS & MUD CUT OIL

RATE INFORMATION

OIL VOLUME:	3.8713 STB	TOTAL FLOW TIME:	75.0000 min.
GAS VOLUME:	4.7255 SCF	AVERAGE OIL RATE:	80.7918 STB/D
MUD VOLUME:	0.3366 STB	AVERAGE WATER RATE:	0.0000 STB/D
WATER VOLUME:	0.0000 STB		
TOTAL FLUID :	4.2079 STB		

FIELD TIME & PRESSURE INFORMATION

INITIAL HYDROSTATIC PRESSURE: 2210.00

Description	Duration	p1	p End
INITIAL FLOW	30.00	86.00	86.00
INITIAL SHUT-IN	45.00		1184.00
FINAL FLOW	45.00	162.00	162.00
FINAL SHUT-IN	60.00		1184.00

FINAL HYDROSTATIC PRESSURE: 2210.00

OFFICE TIME & PRESSURE INFORMATION

INITIAL HYDROSTATIC PRESSURE: 2231.00

Description	Duration	p1	p End
INITIAL FLOW	30.00	84.00	82.00
INITIAL SHUT-IN	45.00		1171.00
FINAL FLOW	45.00	151.00	146.00
FINAL SHUT-IN	63.00		1166.00

FINAL HYDROSTATIC PRESSURE: 2210.00

PRESSURE TRANSIENT REPORT

GENERAL INFORMATION

DATE	: 8-16-95	TICKET	: 21023
CUSTOMER	: LANDMARK OIL EXPLORATION	LEASE	: WESSEMILLER
WELL	: #1-24	TEST:	2
ELEVATION:	3153 KB	GEOLOGIST:	CAULK
SECTION	: 24	FORMATION:	KANSAS CITY "I"
RANGE	: 34W	COUNTY:	LOGAN
GAUGE SN#:	1051	RANGE	: 4250
		TOWNSHIP	: 11
		STATE	: KS
		CLOCK	: 12

INITIAL FLOW

<u>Time (min)</u>	<u>Pressure</u>	<u>Delta P</u>
0.00	84.00	84.00
5.00	82.00	-2.00
10.00	82.00	0.00
15.00	82.00	0.00
20.00	82.00	0.00
25.00	82.00	0.00
30.00	82.00	0.00

INITIAL SHUT IN

<u>Time (min)</u>	<u>Pressure</u>	<u>Delta P</u>	<u>Horner T</u>
3.00	105.00	105.00	11.00
6.00	224.00	119.00	6.00
9.00	607.00	383.00	4.33
12.00	815.00	208.00	3.50
15.00	916.00	101.00	3.00
18.00	978.00	62.00	2.67
21.00	1032.00	54.00	2.43
24.00	1061.00	29.00	2.25
27.00	1087.00	26.00	2.11
30.00	1108.00	21.00	2.00
33.00	1121.00	13.00	1.91
36.00	1135.00	14.00	1.83
39.00	1146.00	11.00	1.77
42.00	1159.00	13.00	1.71
45.00	1171.00	12.00	1.67

PRESSURE TRANSIENT REPORT (CONTINUED)

FINAL FLOW

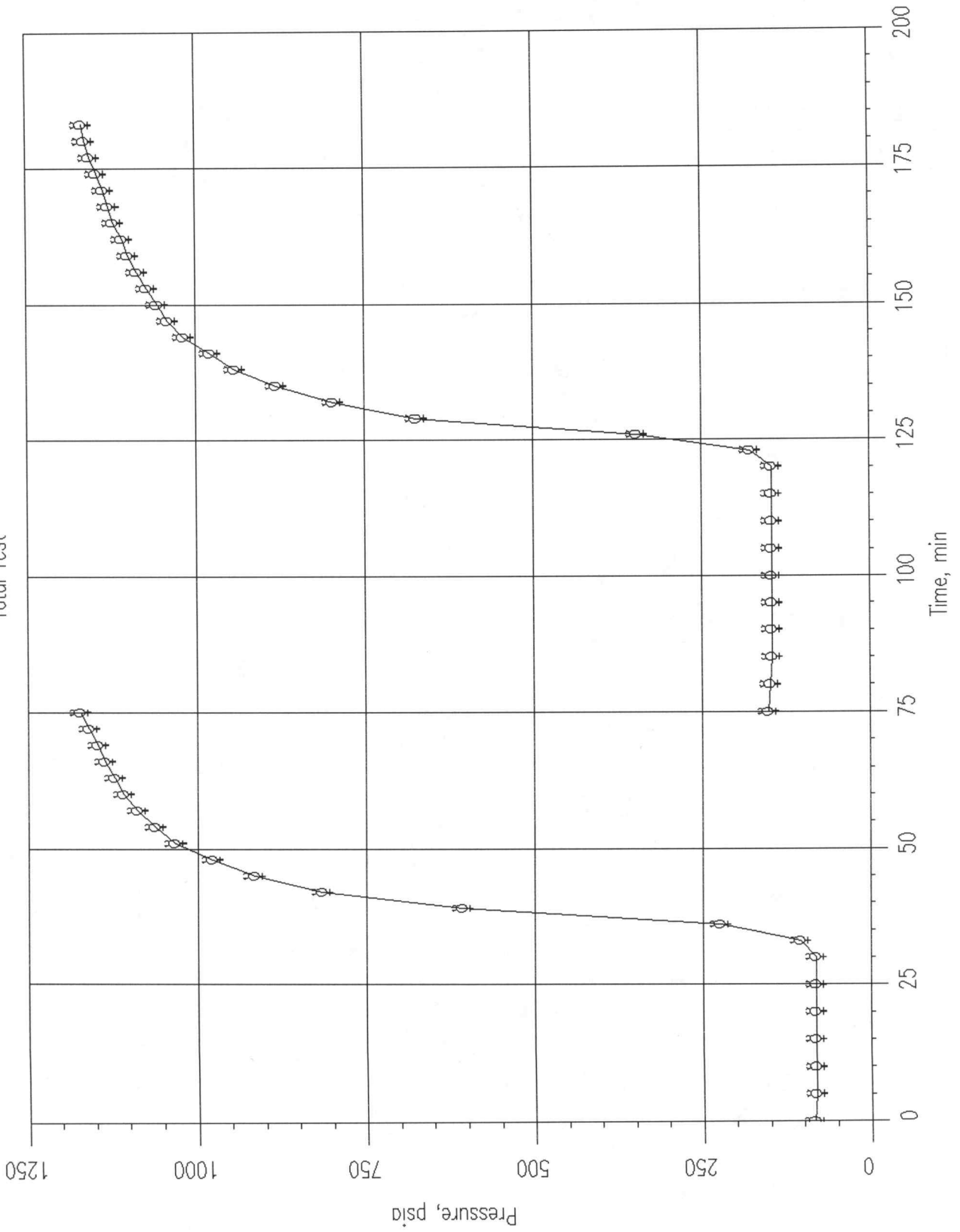
Time (min)	Pressure	Delta P
0.00	151.00	151.00
5.00	149.00	-2.00
10.00	146.00	-3.00
15.00	146.00	0.00
20.00	146.00	0.00
25.00	146.00	0.00
30.00	146.00	0.00
35.00	146.00	0.00
40.00	146.00	0.00
45.00	146.00	0.00

FINAL SHUT IN

Time (min)	Pressure	Delta P	Horner T
3.00	177.00	177.00	16.00
6.00	345.00	168.00	8.50
9.00	673.00	328.00	6.00
12.00	797.00	124.00	4.75
15.00	881.00	84.00	4.00
18.00	941.00	60.00	3.50
21.00	978.00	37.00	3.14
24.00	1017.00	39.00	2.88
27.00	1040.00	23.00	2.67
30.00	1055.00	15.00	2.50
33.00	1070.00	15.00	2.36
36.00	1085.00	15.00	2.25
39.00	1098.00	13.00	2.15
42.00	1106.00	8.00	2.07
45.00	1119.00	13.00	2.00
48.00	1126.00	7.00	1.94
51.00	1134.00	8.00	1.88
54.00	1144.00	10.00	1.83
57.00	1154.00	10.00	1.79
60.00	1162.00	8.00	1.75
63.00	1166.00	4.00	1.71

Profile Plot

Total Test

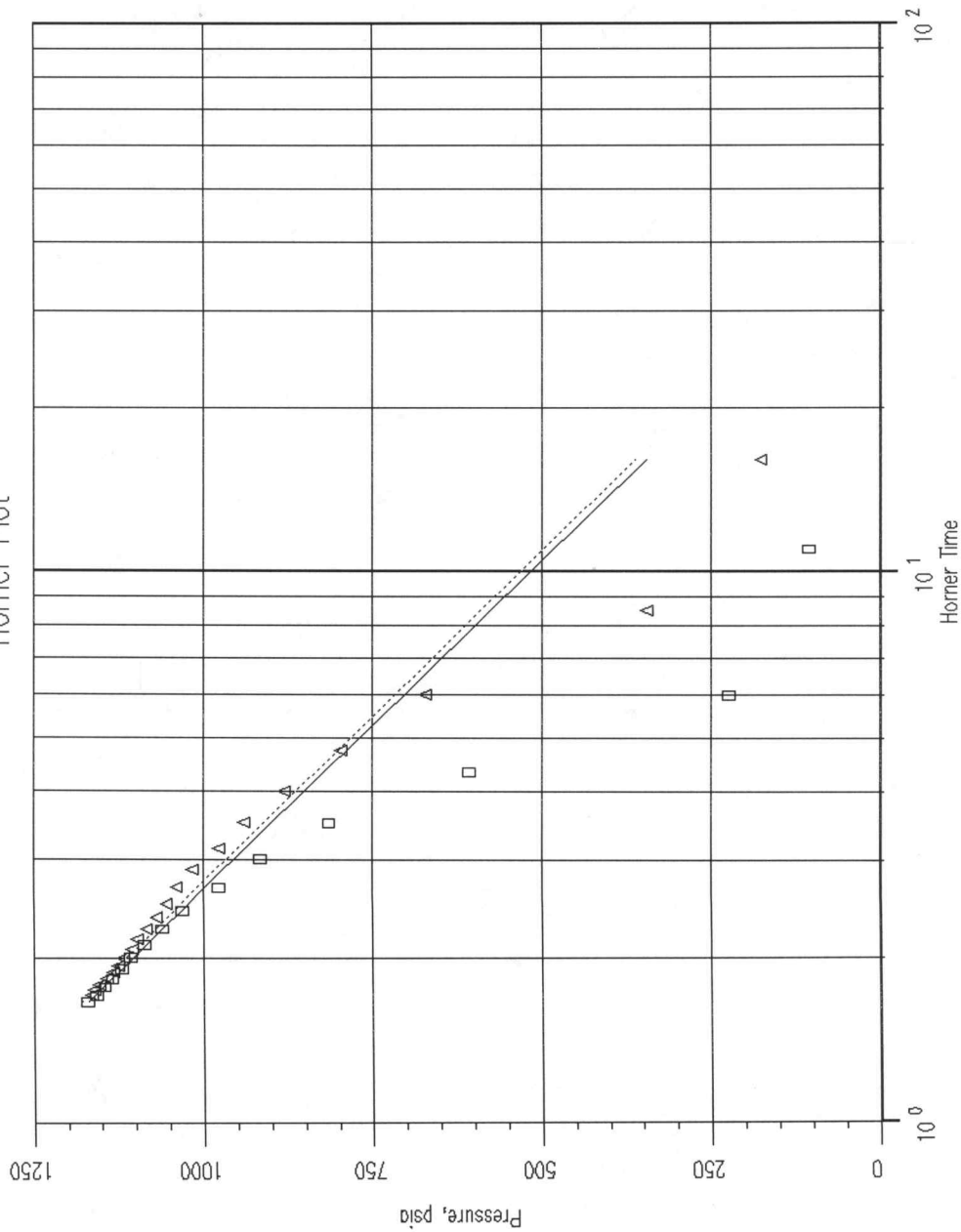


DATE 8-16-95
 CUSTOMER LANDMARK OIL EXPLORATION
 WELL #1-24
 ELEVATION 3153 KB
 SECTION 24
 RANGE 34W
 GAUGE SN# 1051

TEST 2
 COUNTY LOGAN
 RANGE 4250

TICKET 21023
 LEASE WESSEMILLER
 GEOLOGIST CAULK
 FORMATION KANSAS CITY "I"
 TOWNSHIP 11
 STATE KS
 CLOCK 12

Horner Plot



Result

	#1	#2
tp, hrs	0.50	0.75
Slope	-839.46	-831.22
Pstar, psig	1355.89	1363.60
P1hr, psig	1208.07	1161.58
Skin	-1.09	-1.36
k, md	4.28	4.32
kh/u, md-ft/cp	17.70	17.88
ri, ft	7.53	9.27
DR, %	0.48	0.44
Drawdown Factor, %	0.427	0.427
Drawdown P*, %	-0.568	-0.568

— BUILD 1
 BUILD 2

HORNER ANALYSIS REPORT

GENERAL INFORMATION

DATE : 8-16-95	TICKET : 21023
CUSTOMER : LANDMARK OIL EXPLORATION	LEASE : WESSEMILLER
WELL : #1-24	TEST: 2
ELEVATION: 3153 KB	GEOLOGIST: CAULK
SECTION : 24	FORMATION: KANSAS CITY "I"
RANGE : 34W	TOWNSHIP : 11
COUNTY: LOGAN	STATE : KS
GAUGE SN#: 1051	RANGE : 4250
	CLOCK : 12

Input Data

Porosity 0.140 Rw: 0.328 ft h: 4.000 ft

qo 80.8 STB GOR 271.9 SCF/STB

Pvt Data

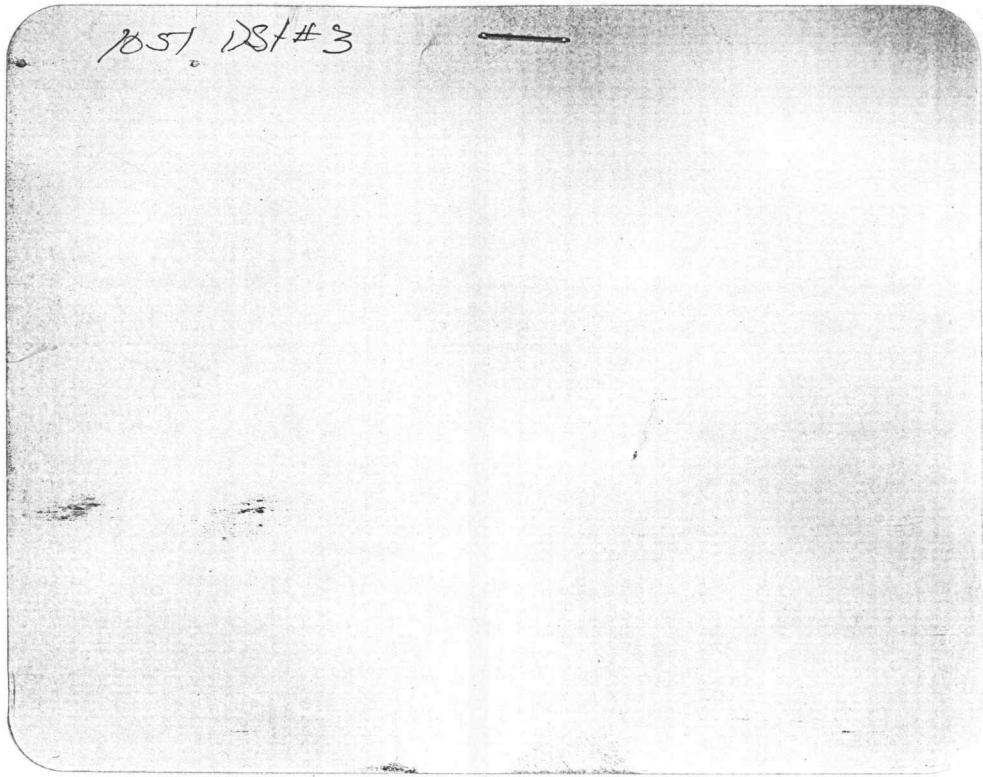
Evaluation Pressure : 1171.0

Evaluation Temperature: 122.0

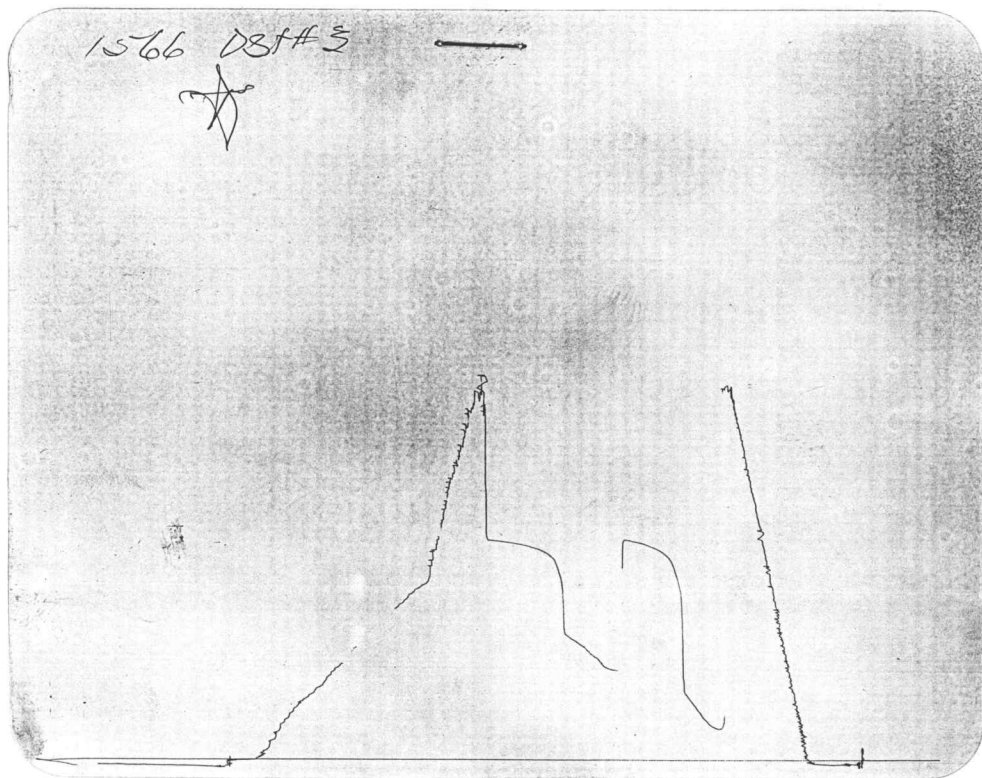
Oil Grav	38.00 API	Gas Grav	0.65 API	Pb	1171.00 PSIA
Bo	1.131 RBL/STB	Vis	1.000 cp	Ct	2.9388E-004 1/PSI

Horner Results

	Initial Shut-In	Final Shut-In
pseudo pressure time	0.50 hrs	0.75 hrs
slope	-839.46	-831.22
pstar	1355.89 psig	1363.60 psig
plhr	1208.07 psig	1161.58 psig
skin	-1.09	-1.36
permeability	4.28 md	4.32 md
transmissability	17.70 md-ft/cp	17.88 md-ft/cp
radius of investigation	7.53 ft	9.27 ft
Damage-Ratio	0.48 percent	0.44 percent
Drawdown Factor		0.427 percent
Drawdown P*		-0.568 percent



Inside Recorder



Outside Recorder

DST REPORT

GENERAL INFORMATION

DATE : 8-17-95
CUSTOMER : LANDMARK OIL EXPLORATION
WELL : #1-24 TEST: 3
ELEVATION: 3153 KB
SECTION : 24
RANGE : 34W COUNTY: LOGAN
GAUGE SN#: 1051 RANGE : 4250
TICKET : 21024
LEASE : WESSEMILLER
GEOLOGIST: CAULK
FORMATION: KANSAS CITY
TOWNSHIP : 11
STATE : KS
CLOCK : 12

WELL INFORMATION

PERFORATION INTERVAL FROM: 4274.00 ft TO: 4298.00 ft TVD: 4298.0 ft
DEPTH OF SELECTIVE ZONE: TEST TYPE: OIL
DEPTH OF RECORDERS: 4287.0 ft 4290.0 ft
TEMPERATURE: 122.0
DRILL COLLAR LENGTH: 0.0 ft I.D.: 0.000 in
WEIGHT PIPE LENGTH : 0.0 ft I.D.: 0.000 in
DRILL PIPE LENGTH : 4246.0 ft I.D.: 3.800 in
TEST TOOL LENGTH : 28.0 ft TOOL SIZE : 5.500 in
ANCHOR LENGTH : 24.0 ft ANCHOR SIZE: 5.500 in
SURFACE CHOKE SIZE : 0.750 in BOTTOM CHOKE SIZE: 0.750 in
MAIN HOLE SIZE : 7.875 in TOOL JOINT SIZE : 4.5XH
PACKER DEPTH: 4269.0 ft SIZE: 6.630 in
PACKER DEPTH: 4274.0 ft SIZE: 6.630 in
PACKER DEPTH: 0.0 ft SIZE: 0.000 in
PACKER DEPTH: 0.0 ft SIZE: 0.000 in

MUD INFORMATION

DRILLING CON. : L D DAVIS DRILLING
MUD TYPE : CHEMICAL VISCOSITY : 51.00 cp
WEIGHT : 9.200 ppg WATER LOSS: 9.600 cc
CHLORIDES : 4200 ppm
JARS-MAKE : WTC SERIAL NUMBER: 411
DID WELL FLOW?: NO REVERSED OUT?: NO

COMMENTS

Comment

INITIAL FLOW PERIOD-STRONG BLOW IN 1 MINUTE.
FINAL FLOW PERIOD-STRONG BLOW. NO GAS TO SURFACE.

DST REPORT (CONTINUED)

FLUID RECOVERY

Feet of Fluid	% Oil	% Gas	% Water	% Mud	Comments
0.0	0.0	0.0	0.0	0.0	1400FT GAS ABOVE FLUID
2070.0	100.0	0.0	0.0	0.0	FREE GASSY OIL
660.0	0.0	0.0	85.0	15.0	MUDDY WATER
0.0	0.0	0.0	0.0	0.0	CHLORIDES 43,000 PPM

RATE INFORMATION

OIL VOLUME:	29.0346	STB	TOTAL FLOW TIME:	75.0000	min.
GAS VOLUME:	0.0000	SCF	AVERAGE OIL RATE:	557.4635	STB/D
MUD VOLUME:	1.3886	STB	AVERAGE WATER RATE:	177.7420	STB/D
WATER VOLUME:	7.8688	STB			
TOTAL FLUID :	38.2919	STB			

FIELD TIME & PRESSURE INFORMATION

INITIAL HYDROSTATIC PRESSURE: 2210.00

Description	Duration	p1	p End
INITIAL FLOW	30.00	162.00	400.00
INITIAL SHUT-IN	45.00		1291.00
FINAL FLOW	45.00	518.00	754.00
FINAL SHUT-IN	60.00		1291.00

FINAL HYDROSTATIC PRESSURE: 2210.00

OFFICE TIME & PRESSURE INFORMATION

INITIAL HYDROSTATIC PRESSURE: 2210.00

Description	Duration	p1	p End
INITIAL FLOW	30.00	86.00	287.00
INITIAL SHUT-IN	45.00		1181.00
FINAL FLOW	45.00	426.00	630.00
FINAL SHUT-IN	60.00		1183.00

FINAL HYDROSTATIC PRESSURE: 2191.00

PRESSURE TRANSIENT REPORT

GENERAL INFORMATION

DATE : 8-17-95	TICKET : 21024
CUSTOMER : LANDMARK OIL EXPLORATION	LEASE : WESSEMILLER
WELL : #1-24 TEST: 3	GEOLOGIST: CAULK
ELEVATION: 3153 KB	FORMATION: KANSAS CITY
SECTION : 24	TOWNSHIP : 11
RANGE : 34W COUNTY: LOGAN	STATE : KS
GAUGE SN#: 1051 RANGE : 4250	CLOCK : 12

INITIAL FLOW

<u>Time (min)</u>	<u>Pressure</u>	<u>Delta P</u>
0.00	86.00	86.00
5.00	82.00	-4.00
10.00	97.00	15.00
15.00	140.00	43.00
20.00	190.00	50.00
25.00	248.00	58.00
30.00	287.00	39.00

INITIAL SHUT IN

<u>Time (min)</u>	<u>Pressure</u>	<u>Delta P</u>	<u>Horner T</u>
3.00	754.00	754.00	11.00
6.00	954.00	200.00	6.00
9.00	1008.00	54.00	4.33
12.00	1063.00	55.00	3.50
15.00	1088.00	25.00	3.00
18.00	1100.00	12.00	2.67
21.00	1122.00	22.00	2.43
24.00	1142.00	20.00	2.25
27.00	1150.00	8.00	2.11
30.00	1155.00	5.00	2.00
33.00	1166.00	11.00	1.91
36.00	1171.00	5.00	1.83
39.00	1175.00	4.00	1.77
42.00	1179.00	4.00	1.71
45.00	1181.00	2.00	1.67

PRESSURE TRANSIENT REPORT (CONTINUED)

FINAL FLOW

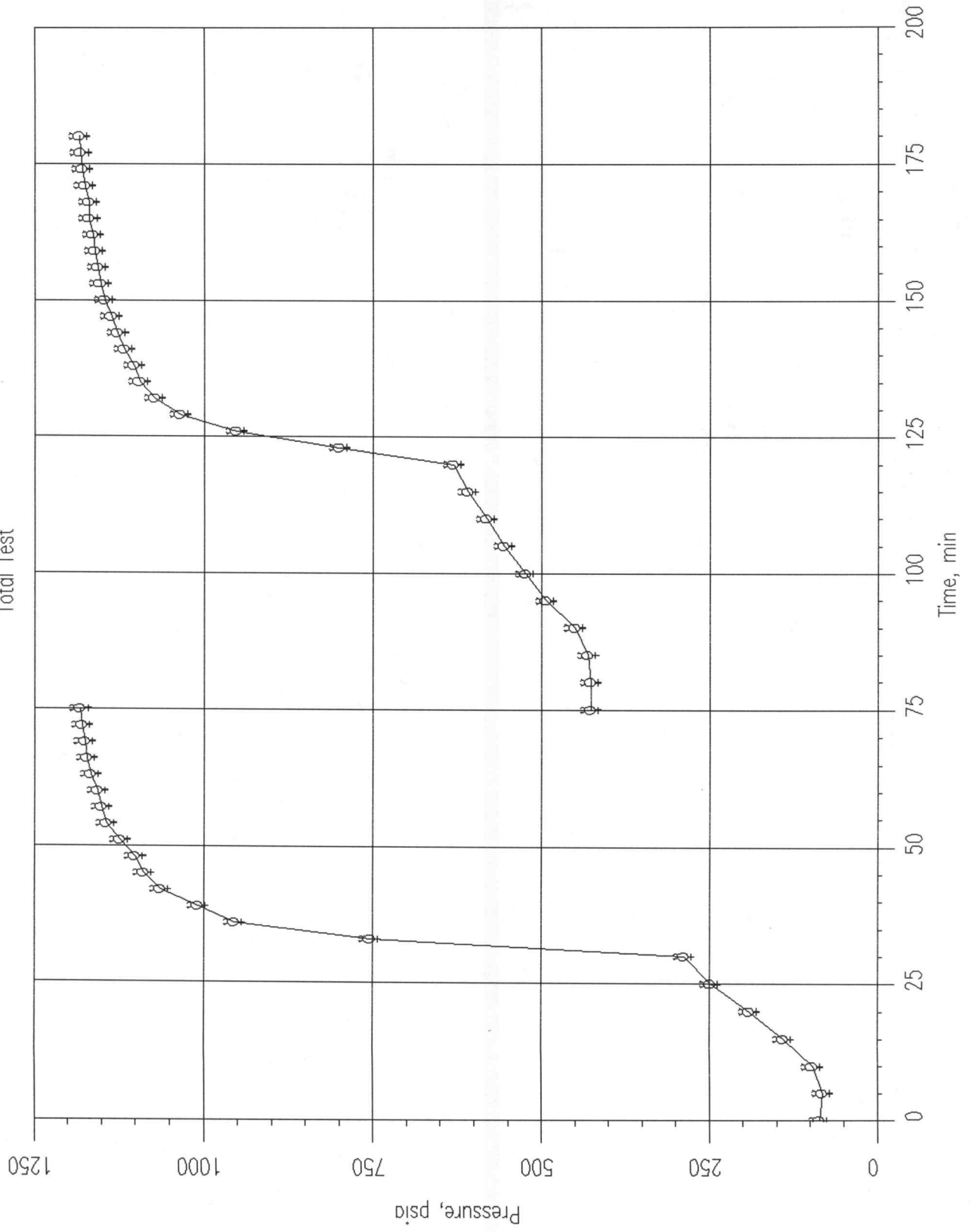
Time (min)	Pressure	Delta P
0.00	426.00	426.00
5.00	426.00	0.00
10.00	430.00	4.00
15.00	450.00	20.00
20.00	493.00	43.00
25.00	523.00	30.00
30.00	555.00	32.00
35.00	581.00	26.00
40.00	609.00	28.00
45.00	630.00	21.00

FINAL SHUT IN

Time (min)	Pressure	Delta P	Horner T
3.00	800.00	800.00	16.00
6.00	952.00	152.00	8.50
9.00	1034.00	82.00	6.00
12.00	1072.00	38.00	4.75
15.00	1094.00	22.00	4.00
18.00	1102.00	8.00	3.50
21.00	1116.00	14.00	3.14
24.00	1126.00	10.00	2.88
27.00	1136.00	10.00	2.67
30.00	1146.00	10.00	2.50
33.00	1152.00	6.00	2.36
36.00	1156.00	4.00	2.25
39.00	1160.00	4.00	2.15
42.00	1163.00	3.00	2.07
45.00	1168.00	5.00	2.00
48.00	1169.00	1.00	1.94
51.00	1175.00	6.00	1.88
54.00	1179.00	4.00	1.83
57.00	1181.00	2.00	1.79
60.00	1183.00	2.00	1.75

Profile Plot

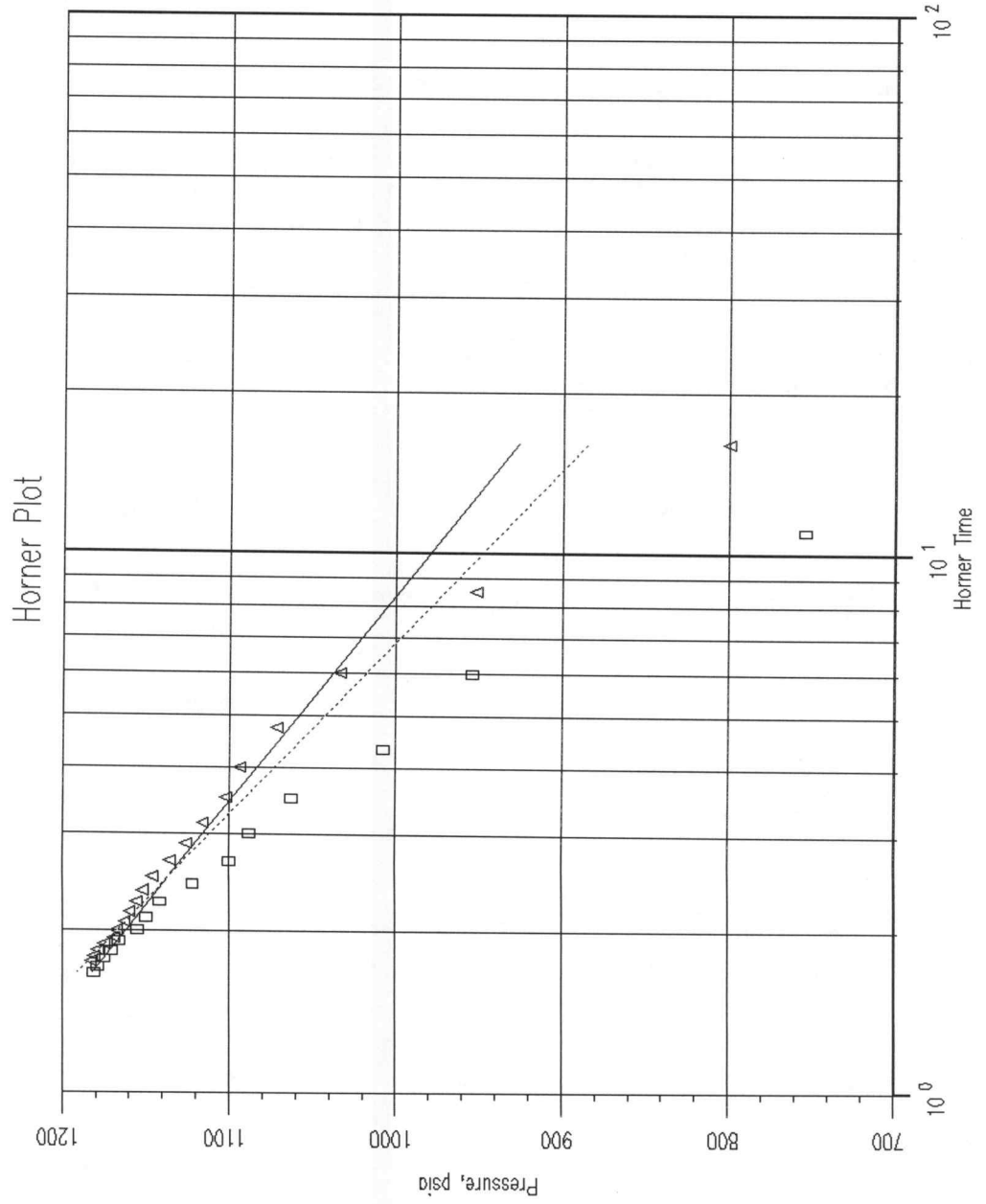
Total Test



DATE 8-17-95
 CUSTOMER LANDMARK OIL EXPLORATION
 WELL #1-24
 ELEVATION 3153 KB
 SECTION 24
 RANGE 34W
 GAUGE SN# 1051

TEST 3
 COUNTY LOGAN
 RANGE 4250

TICKET 21024
 LEASE WESSEMILLER
 GEOLOGIST CAULK
 FORMATION KANSAS CITY
 TOWNSHIP 11
 STATE KS
 CLOCK 12



Result

	#1	#2
tp, hrs	0.50	0.75
Slope	-259.41	-311.15
Pstar, psig	1239.14	1259.60
P1hr, psig	1193.46	1183.98
Skin	-0.03	-2.04
k, md	76.13	63.47
kh/u, md-ft/cp	395.74	329.93
ri, ft	30.97	34.63
DR, %	0.87	0.45
Drawdown Factor, %		-0.169
Drawdown P*, %		-1.652

HORNER ANALYSIS REPORT

GENERAL INFORMATION

DATE : 8-17-95	TICKET : 21024
CUSTOMER : LANDMARK OIL EXPLORATION	LEASE : WESSEMILLER
WELL : #1-24	TEST: 3
ELEVATION: 3153 KB	GEOLOGIST: CAULK
SECTION : 24	FORMATION: KANSAS CITY
RANGE : 34W	TOWNSHIP : 11
COUNTY: LOGAN	STATE : KS
GAUGE SN#: 1051	RANGE : 4250
	CLOCK : 12

Input Data

Porosity 0.150 Rw: 0.328 ft h: 5.000 ft

qo 557.5 STB GOR 274.7 SCF/STB

Pvt Data

Evaluation Pressure : 1181.0

Evaluation Temperature: 122.0

Oil Grav 38.00 API	Gas Grav 0.65 API	Pb 1181.00 PSIA	
Bo 1.133 RBL/STB	Vis 1.000 cp	Ct 2.9021E-004	1/PSI

Horner Results

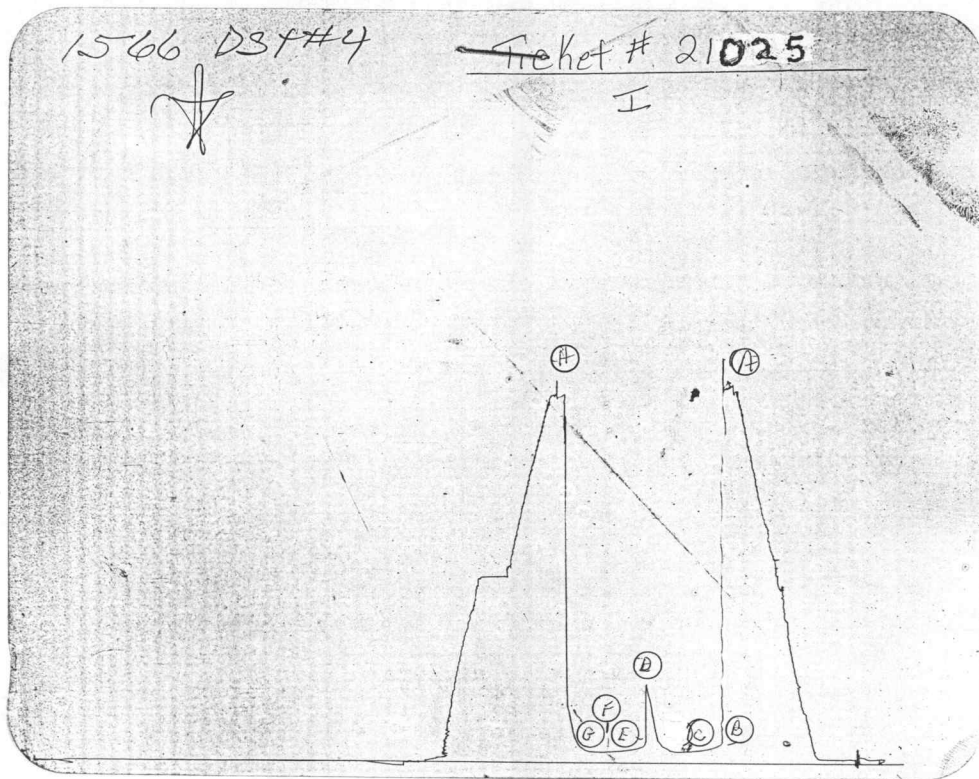
	Inital Shut-In	Final Shut-In
pseudo pressure time	0.50 hrs	0.75 hrs
slope	-259.41	-311.15
pstar	1239.14 psig	1259.60 psig
plhr	1193.46 psig	1183.98 psig
skin	-0.03	-2.04
permeability	76.13 md	63.47 md
transmisability	395.74 md-ft/cp	329.93 md-ft/cp
radius of investigation	30.97 ft	34.63 ft
Damage-Ratio	0.87 percent	0.45 percent
Drawdown Factor		-0.169 percent
Drawdown P*		-1.652 percent

1566 DST#4



~~Ticket # 21025~~

I

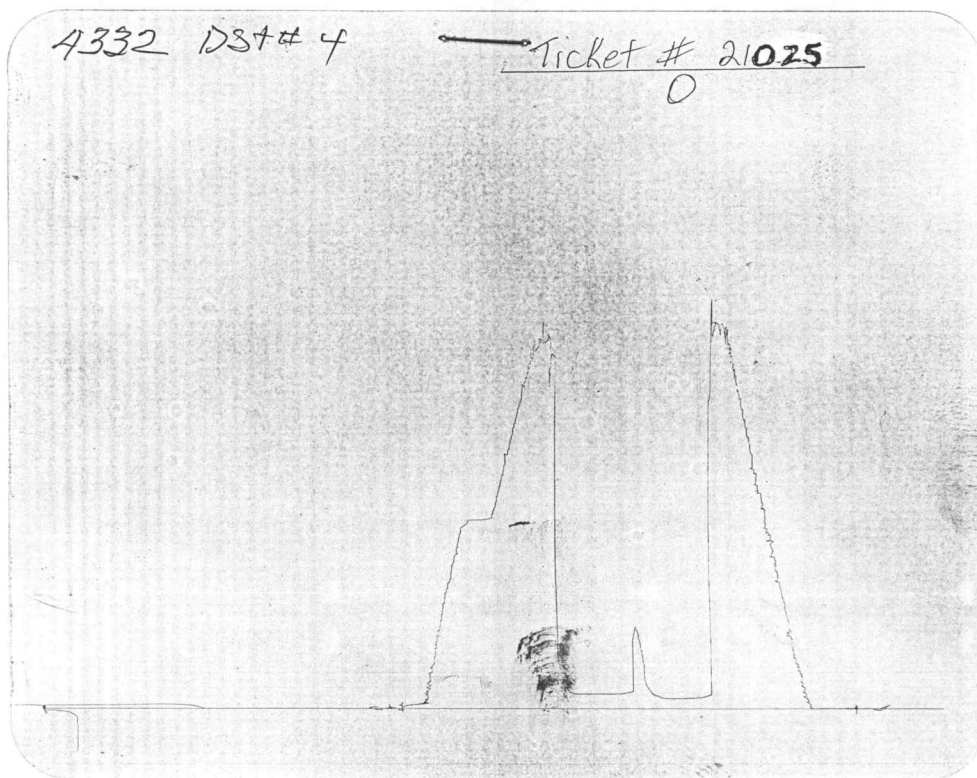


Inside Recorder

4332 DST#4

~~Ticket # 21025~~

O



Outside Recorder

DST REPORT

GENERAL INFORMATION

DATE	: 8-18-95	TICKET	: 21025
CUSTOMER	: LANDMARK OIL EXPLORATION	LEASE	: WESSEMILLER
WELL	: #1-24	TEST: 4	GEOLOGIST: CAULK
ELEVATION	: 3153 KB	FORMATION	: KANSAS CITY "K"
SECTION	: 24	TOWNSHIP	: 11
RANGE	: 34W	COUNTY: LOGAN	STATE : KS
GAUGE SN#	: 1566	RANGE : 4300	CLOCK : 12

WELL INFORMATION

PERFORATION INTERVAL FROM:	4291.00 ft	TO:	4320.00 ft	TVD:	4320.0 ft
DEPTH OF SELECTIVE ZONE:				TEST TYPE:	OIL
DEPTH OF RECORDERS:	4312.0 ft	4315.0 ft			
TEMPERATURE:	123.0				
DRILL COLLAR LENGTH:	0.0 ft	I.D.:	0.000 in		
WEIGHT PIPE LENGTH :	0.0 ft	I.D.:	0.000 in		
DRILL PIPE LENGTH :	4263.0 ft	I.D.:	3.800 in		
TEST TOOL LENGTH :	28.0 ft	TOOL SIZE :	5.500 in		
ANCHOR LENGTH :	29.0 ft	ANCHOR SIZE:	5.500 in		
SURFACE CHOKE SIZE :	0.750 in	BOTTOM CHOKE SIZE:	0.750 in		
MAIN HOLE SIZE :	7.875 in	TOOL JOINT SIZE :	4.5XH		
PACKER DEPTH:	4286.0 ft	SIZE:	6.630 in		
PACKER DEPTH:	4291.0 ft	SIZE:	6.630 in		
PACKER DEPTH:	0.0 ft	SIZE:	0.000 in		
PACKER DEPTH:	0.0 ft	SIZE:	0.000 in		

MUD INFORMATION

DRILLING CON. :	L D DAVIS DRILLING	VISCOSITY :	52.00 cp
MUD TYPE :	CHEMICAL	WATER LOSS:	9.600 cc
WEIGHT :	9.200 ppg	SERIAL NUMBER:	411
CHLORIDES :	4200 ppm	REVERSED OUT?:	NO
JARS-MAKE :	WTC		
DID WELL FLOW?:	NO		

COMMENTS

Comment

INITIAL FLOW PERIOD-VERY WEAK SURFACE FOR 5 MINUTES & DIED. FINAL FLOW PERIOD-FEW BUBBLES & DIED.

DST REPORT (CONTINUED)

FLUID RECOVERY

Feet of Fluid	% Oil	% Gas	% Water	% Mud	Comments
7.0	10.0	0.0	0.0	90.0	OIL CUT MUD

RATE INFORMATION

OIL VOLUME:	0.0098 STB	TOTAL FLOW TIME:	60.0000 min.
GAS VOLUME:	0.0000 SCF	AVERAGE OIL RATE:	2.3564 STB/D
MUD VOLUME:	0.0884 STB	AVERAGE WATER RATE:	0.0000 STB/D
WATER VOLUME:	0.0000 STB		
TOTAL FLUID :	0.0982 STB		

FIELD TIME & PRESSURE INFORMATION

INITIAL HYDROSTATIC PRESSURE: 2210.00

Description	Duration	p1	p End
INITIAL FLOW	30.00	86.00	54.00
INITIAL SHUT-IN	30.00		432.00
FINAL FLOW	30.00	75.00	54.00
FINAL SHUT-IN	30.00		324.00

FINAL HYDROSTATIC PRESSURE: 2156.00

OFFICE TIME & PRESSURE INFORMATION

INITIAL HYDROSTATIC PRESSURE: 2210.00

Description	Duration	p1	p End
INITIAL FLOW	30.00	102.00	69.00
INITIAL SHUT-IN	30.00		463.00
FINAL FLOW	30.00	108.00	64.00
FINAL SHUT-IN	30.00		322.00

FINAL HYDROSTATIC PRESSURE: 2162.00

PRESSURE TRANSIENT REPORT

GENERAL INFORMATION

DATE : 8-18-95	TICKET : 21025
CUSTOMER : LANDMARK OIL EXPLORATION	LEASE : WESSEMILLER
WELL : #1-24 TEST: 4	GEOLOGIST: CAULK
ELEVATION: 3153 KB	FORMATION: KANSAS CITY "K"
SECTION : 24	TOWNSHIP : 11
RANGE : 34W COUNTY: LOGAN	STATE : KS
GAUGE SN#: 1566 RANGE : 4300	CLOCK : 12

INITIAL FLOW

<u>Time (min)</u>	<u>Pressure</u>	<u>Delta P</u>
0.00	102.00	102.00
5.00	96.00	-6.00
10.00	85.00	-11.00
15.00	76.00	-9.00
20.00	72.00	-4.00
25.00	69.00	-3.00
30.00	69.00	0.00

INITIAL SHUT IN

<u>Time (min)</u>	<u>Pressure</u>	<u>Delta P</u>	<u>Horner T</u>
3.00	62.00	62.00	11.00
6.00	64.00	2.00	6.00
9.00	68.00	4.00	4.33
12.00	71.00	3.00	3.50
15.00	84.00	13.00	3.00
18.00	92.00	8.00	2.67
21.00	135.00	43.00	2.43
24.00	247.00	112.00	2.25
27.00	361.00	114.00	2.11
30.00	463.00	102.00	2.00

FINAL FLOW

<u>Time (min)</u>	<u>Pressure</u>	<u>Delta P</u>
0.00	108.00	108.00

PRESSURE TRANSIENT REPORT (CONTINUED)

FINAL FLOW (CONTINUED)

Time (min)	Pressure	Delta P
5.00	88.00	-20.00
10.00	79.00	-9.00
15.00	72.00	-7.00
20.00	68.00	-4.00
25.00	65.00	-3.00
30.00	64.00	-1.00

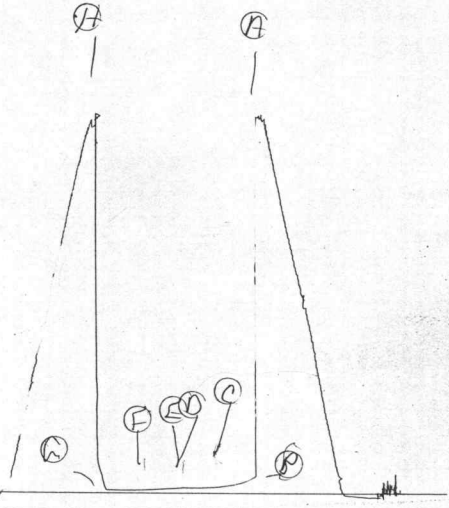
FINAL SHUT IN

Time (min)	Pressure	Delta P	Horner T
3.00	64.00	64.00	11.00
6.00	64.00	0.00	6.00
9.00	64.00	0.00	4.33
12.00	66.00	2.00	3.50
15.00	70.00	4.00	3.00
18.00	76.00	6.00	2.67
21.00	92.00	16.00	2.43
24.00	129.00	37.00	2.25
27.00	188.00	59.00	2.11
30.00	322.00	134.00	2.00

1566 DST#5



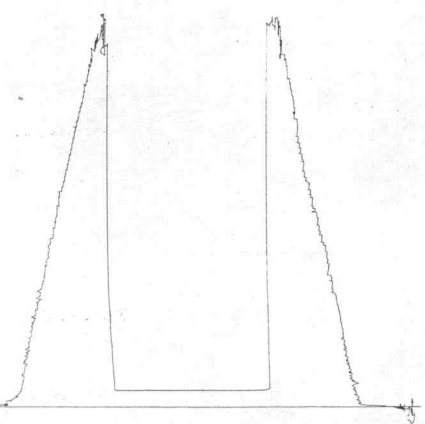
KT 21276



Inside Recorder

4332 DST#5

KT 21276



Outside Recorder

DST REPORT

GENERAL INFORMATION

DATE : 8-18-95
CUSTOMER : LANDMARK OIL EXPLORATION
WELL : #1-24 TEST: 5
ELEVATION: 3153 KB
SECTION : 24
RANGE : 34W COUNTY: LOGAN
GAUGE SN#: 1566 RANGE : 4300
TICKET : 21276
LEASE : WESSEMILLER
GEOLOGIST: CAULK
FORMATION: KANSAS CITY "L"
TOWNSHIP : 11
STATE : KS
CLOCK : 12

WELL INFORMATION

PERFORATION INTERVAL FROM: 4325.00 ft TO: 4356.00 ft TVD: 4356.0 ft
DEPTH OF SELECTIVE ZONE: TEST TYPE: OIL
DEPTH OF RECORDERS: 4347.0 ft 4350.0 ft
TEMPERATURE: 123.0
DRILL COLLAR LENGTH: 0.0 ft I.D.: 0.000 in
WEIGHT PIPE LENGTH : 0.0 ft I.D.: 0.000 in
DRILL PIPE LENGTH : 4297.0 ft I.D.: 3.800 in
TEST TOOL LENGTH : 28.0 ft TOOL SIZE : 5.500 in
ANCHOR LENGTH : 31.0 ft ANCHOR SIZE: 5.500 in
SURFACE CHOKE SIZE : 0.750 in BOTTOM CHOKE SIZE: 0.750 in
MAIN HOLE SIZE : 7.875 in TOOL JOINT SIZE : 4.5XH
PACKER DEPTH: 4320.0 ft SIZE: 6.630 in
PACKER DEPTH: 4325.0 ft SIZE: 6.630 in
PACKER DEPTH: 0.0 ft SIZE: 0.000 in
PACKER DEPTH: 0.0 ft SIZE: 0.000 in

MUD INFORMATION

DRILLING CON. : L D DAVIS DRILLING
MUD TYPE : CHEMICAL VISCOSITY : 56.00 cp
WEIGHT : 9.000 ppg WATER LOSS: 8.800 cc
CHLORIDES : 5500 ppm
JARS-MAKE : WTC SERIAL NUMBER: 411
DID WELL FLOW?: NO REVERSED OUT?: NO

COMMENTS

Comment

INITIAL FLOW PERIOD-VERY WEAK SURFACE BLOW FOR 7
MINUTES & DIED. FINAL FLOW PERIOD-FEW BUBBLES &
DIED.

DST REPORT (CONTINUED)

FLUID RECOVERY

Feet of Fluid	% Oil	% Gas	% Water	% Mud	Comments
3.0	0.0	0.0	0.0	100.0	MUD

RATE INFORMATION

OIL VOLUME:	0.0000	STB		TOTAL FLOW TIME:	60.0000	min.
GAS VOLUME:	0.0000	SCF		AVERAGE OIL RATE:	0.0000	STB/D
MUD VOLUME:	0.0421	STB		AVERAGE WATER RATE:	0.0000	STB/D
WATER VOLUME:	0.0000	STB				
TOTAL FLUID :	0.0421	STB				

FIELD TIME & PRESSURE INFORMATION

INITIAL HYDROSTATIC PRESSURE: 2210.00

Description	Duration	p1	p End
INITIAL FLOW	30.00	75.00	54.00
INITIAL SHUT-IN	30.00		54.00
FINAL FLOW	30.00	32.00	21.00
FINAL SHUT-IN	30.00		21.00

FINAL HYDROSTATIC PRESSURE: 2210.00

OFFICE TIME & PRESSURE INFORMATION

INITIAL HYDROSTATIC PRESSURE: 2236.00

Description	Duration	p1	p End
INITIAL FLOW	30.00	117.00	63.00
INITIAL SHUT-IN	27.00		59.00
FINAL FLOW	30.00	52.00	45.00
FINAL SHUT-IN	30.00		45.00

FINAL HYDROSTATIC PRESSURE: 2213.00

PRESSURE TRANSIENT REPORT

GENERAL INFORMATION

DATE : 8-18-95	TICKET : 21276
CUSTOMER : LANDMARK OIL EXPLORATION	LEASE : WESSEMILLER
WELL : #1-24	TEST: 5
ELEVATION: 3153 KB	GEOLOGIST: CAULK
SECTION : 24	FORMATION: KANSAS CITY "L"
RANGE : 34W	TOWNSHIP : 11
COUNTY: LOGAN	STATE : KS
GAUGE SN#: 1566	RANGE : 4300
	CLOCK : 12

INITIAL FLOW

<u>Time (min)</u>	<u>Pressure</u>	<u>Delta P</u>
0.00	117.00	117.00
5.00	104.00	-13.00
10.00	91.00	-13.00
15.00	79.00	-12.00
20.00	70.00	-9.00
25.00	65.00	-5.00
30.00	63.00	-2.00

INITIAL SHUT IN

<u>Time (min)</u>	<u>Pressure</u>	<u>Delta P</u>	<u>Horner T</u>
3.00	61.00	61.00	0.00
6.00	59.00	-2.00	0.00
9.00	59.00	0.00	0.00
12.00	59.00	0.00	0.00
15.00	59.00	0.00	0.00
18.00	59.00	0.00	0.00
21.00	59.00	0.00	0.00
24.00	59.00	0.00	0.00
27.00	59.00	0.00	0.00

FINAL FLOW

<u>Time (min)</u>	<u>Pressure</u>	<u>Delta P</u>
0.00	52.00	52.00
5.00	52.00	0.00

PRESSURE TRANSIENT REPORT (CONTINUED)

FINAL FLOW (CONTINUED)

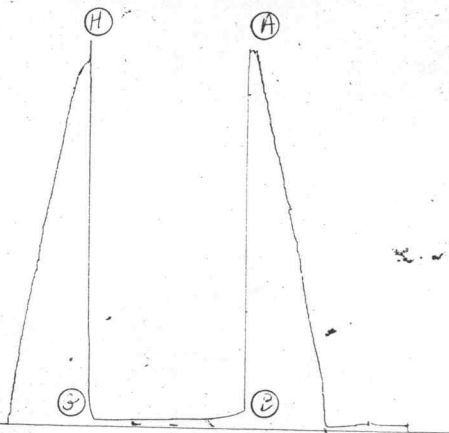
<u>Time (min)</u>	<u>Pressure</u>	<u>Delta P</u>
10.00	52.00	0.00
15.00	48.00	-4.00
20.00	45.00	-3.00
25.00	45.00	0.00
30.00	45.00	0.00

FINAL SHUT IN

<u>Time (min)</u>	<u>Pressure</u>	<u>Delta P</u>	<u>Horner T</u>
3.00	45.00	45.00	0.00
6.00	45.00	0.00	0.00
9.00	45.00	0.00	0.00
12.00	45.00	0.00	0.00
15.00	45.00	0.00	0.00
18.00	45.00	0.00	0.00
21.00	45.00	0.00	0.00
24.00	45.00	0.00	0.00
27.00	45.00	0.00	0.00
30.00	45.00	0.00	0.00

1566 DST#6

Ticket # 21277

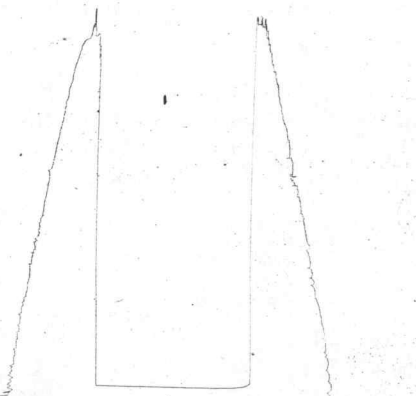


Inside Recorder

4332 DST#6

Ticket # 21277

0



Outside Recorder

DST REPORT

GENERAL INFORMATION

DATE	: 8-19-95	TICKET	: 21277
CUSTOMER	: LANDMARK OIL EXPLORATION	LEASE	: WESSEMILLER
WELL	: #1-24	TEST: 6	GEOLOGIST: CAULK
ELEVATION:	3153 KB	FORMATION:	PLEASANTON SAND
SECTION	: 24	TOWNSHIP	: 11
RANGE	: 34W	COUNTY: LOGAN	STATE : KS
GAUGE SN#:	1566	RANGE : 4300	CLOCK : 12

WELL INFORMATION

PERFORATION INTERVAL FROM:	4351.00 ft	TO:	4376.00 ft	TVD:	4376.0 ft
DEPTH OF SELECTIVE ZONE:				TEST TYPE:	OIL
DEPTH OF RECORDERS:	4367.0 ft		4370.0 ft		
TEMPERATURE:	123.0				
DRILL COLLAR LENGTH:	0.0 ft	I.D.:		0.000 in	
WEIGHT PIPE LENGTH :	0.0 ft	I.D.:		0.000 in	
DRILL PIPE LENGTH :	4323.0 ft	I.D.:		3.800 in	
TEST TOOL LENGTH :	28.0 ft	TOOL SIZE :		5.500 in	
ANCHOR LENGTH :	25.0 ft	ANCHOR SIZE:		5.500 in	
SURFACE CHOKE SIZE :	0.750 in	BOTTOM CHOKE SIZE:		0.750 in	
MAIN HOLE SIZE :	7.875 in	TOOL JOINT SIZE :		4.5XH	
PACKER DEPTH:	4346.0 ft	SIZE:		6.630 in	
PACKER DEPTH:	4351.0 ft	SIZE:		6.630 in	
PACKER DEPTH:	0.0 ft	SIZE:		0.000 in	
PACKER DEPTH:	0.0 ft	SIZE:		0.000 in	

MUD INFORMATION

DRILLING CON. :	L D DAVIS DRILLING	VISCOSITY :	49.00 cp
MUD TYPE :	CHEMICAL	WATER LOSS:	8.800 cc
WEIGHT :	9.200 ppg	SERIAL NUMBER:	411
CHLORIDES :	4500 ppm	REVERSED OUT?:	NO
JARS-MAKE :	WTC		
DID WELL FLOW?:	NO		

COMMENTS

Comment

INITIAL FLOW PERIOD-VERY WEAK (1/2 INCH) BLOW,
DIED IN 15 MINUTES. FINAL FLOW PERIOD-FEW BUBBLES
& DIED.

DST REPORT (CONTINUED)

FLUID RECOVERY

Feet of Fluid	% Oil	% Gas	% Water	% Mud	Comments
5.0	0.0	0.0	0.0	100.0	MUD

RATE INFORMATION

OIL VOLUME:	0.0000	STB	TOTAL FLOW TIME:	60.0000	min.
GAS VOLUME:	0.0000	SCF	AVERAGE OIL RATE:	0.0000	STB/D
MUD VOLUME:	0.0701	STB	AVERAGE WATER RATE:	0.0000	STB/D
WATER VOLUME:	0.0000	STB			
TOTAL FLUID :	0.0701	STB			

FIELD TIME & PRESSURE INFORMATION

INITIAL HYDROSTATIC PRESSURE: 2210.00

Description	Duration	p1	p End
INITIAL FLOW	30.00	86.00	54.00
INITIAL SHUT-IN	30.00		54.00
FINAL FLOW	30.00	32.00	32.00
FINAL SHUT-IN	30.00		32.00

FINAL HYDROSTATIC PRESSURE: 2210.00

OFFICE TIME & PRESSURE INFORMATION

INITIAL HYDROSTATIC PRESSURE: 2226.00

Description	Duration	p1	p End
INITIAL FLOW	30.00	101.00	60.00
INITIAL SHUT-IN	30.00		49.00
FINAL FLOW	30.00	49.00	51.00
FINAL SHUT-IN	30.00		49.00

FINAL HYDROSTATIC PRESSURE: 2149.00

PRESSURE TRANSIENT REPORT

GENERAL INFORMATION

DATE	: 8-19-95	TICKET	: 21277
CUSTOMER	: LANDMARK OIL EXPLORATION	LEASE	: WESSEMILLER
WELL	: #1-24	TEST:	6
ELEVATION:	3153 KB	GEOLOGIST:	CAULK
SECTION	: 24	FORMATION:	PLEASANTON SAND
RANGE	: 34W	TOWNSHIP	: 11
GAUGE SN#:	1566	STATE	: KS
		CLOCK	: 12
		COUNTY:	LOGAN
		RANGE	: 4300

INITIAL FLOW

<u>Time (min)</u>	<u>Pressure</u>	<u>Delta P</u>
0.00	101.00	101.00
5.00	96.00	-5.00
10.00	84.00	-12.00
15.00	76.00	-8.00
20.00	71.00	-5.00
25.00	64.00	-7.00
30.00	60.00	-4.00

INITIAL SHUT IN

<u>Time (min)</u>	<u>Pressure</u>	<u>Delta P</u>	<u>Horner T</u>
3.00	57.00	57.00	0.00
6.00	56.00	-1.00	0.00
9.00	56.00	0.00	0.00
12.00	56.00	0.00	0.00
15.00	56.00	0.00	0.00
18.00	55.00	-1.00	0.00
21.00	55.00	0.00	0.00
24.00	53.00	-2.00	0.00
27.00	49.00	-4.00	0.00
30.00	49.00	0.00	0.00

FINAL FLOW

<u>Time (min)</u>	<u>Pressure</u>	<u>Delta P</u>
0.00	49.00	49.00

PRESSURE TRANSIENT REPORT (CONTINUED)

FINAL FLOW (CONTINUED)

<u>Time (min)</u>	<u>Pressure</u>	<u>Delta P</u>
5.00	54.00	5.00
10.00	54.00	0.00
15.00	53.00	-1.00
20.00	51.00	-2.00
25.00	51.00	0.00
30.00	51.00	0.00

FINAL SHUT IN

<u>Time (min)</u>	<u>Pressure</u>	<u>Delta P</u>	<u>Horner T</u>
3.00	51.00	51.00	0.00
6.00	50.00	-1.00	0.00
9.00	49.00	-1.00	0.00
12.00	49.00	0.00	0.00
15.00	49.00	0.00	0.00
18.00	49.00	0.00	0.00
21.00	49.00	0.00	0.00
24.00	49.00	0.00	0.00
27.00	49.00	0.00	0.00
30.00	49.00	0.00	0.00