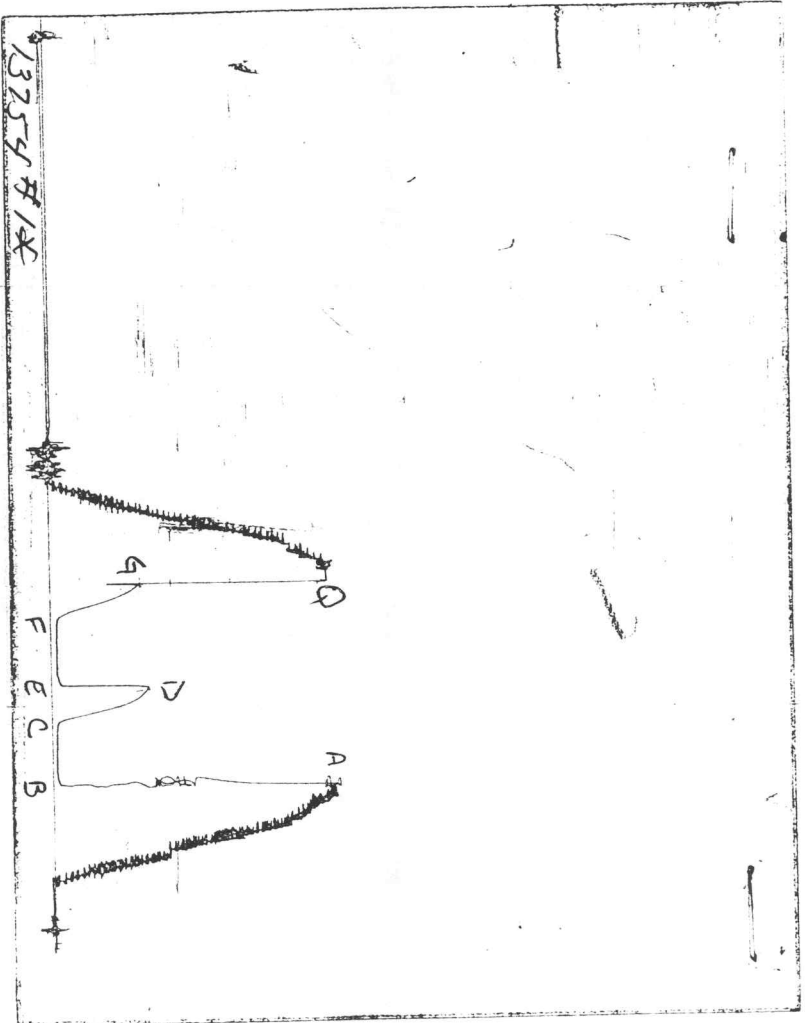


WELL NAME: Vine #9
COMPANY: Castle Resources, Inc
LOCATION: Sec. 26 Twp. 11S Rge. 19W Ellis County Ks
DATE: 9/25/96

CHART PAGE



This is a photocopy of the actual AK-1 recorder chart

TRILOBITE TESTING L.L.C.

OPERATOR : Castle Resources, Inc.
 WELL NAME: Vine #9
 LOCATION : 26-11-19-Ellis-Co-Ks.
 INTERVAL : 3520.00 To 3610.00 ft

DATE 9-23-96
 KB 2109.00 ft TICKET NO: 9523 DST #2
 GR 2101.00 ft FORMATION: Arbuckle
 TD 3610.00 ft TEST TYPE: CONV

RECORDER DATA

Mins		Field	1	2	3	4	TIME DATA-----
PF 45	Rec.	AK-1	AK-1	ALPINE			PF Fr. 0130 to 0215 hr
SI 30	Range(Psi)	4000.0	4000.0	4995.0	0.0	0.0	IS Fr. 0215 to 0245 hr
SF 45	Clock(hrs)	12	12	BATT			SF Fr. 0245 to 0300 hr
FS 45	Depth(ft)	3607.0	3607.0	3526.0	0.0	0.0	FS Fr. 0300 to 0345 hr

	Field	1	2	3	4	
A. Init Hydro	1786.0	1747.0	1717.0	0.0	0.0	T STARTED 2331 hr
B. First Flow	98.0	98.0	36.0	0.0	0.0	T ON BOTM 0128 hr
B1. Final Flow	285.0	288.0	268.0	0.0	0.0	T OPEN 0130 hr
C. In Shut-in	1016.0	1021.0	997.0	0.0	0.0	T PULLED 0345 hr
D. Init Flow	324.0	319.0	267.0	0.0	0.0	T OUT 0730 hr
E. Final Flow	442.0	440.0	419.0	0.0	0.0	
F. Fl Shut-in	1026.0	1025.0	998.0	0.0	0.0	TOOL DATA-----
G. Final Hydro	1736.0	1711.0	1669.0	0.0	0.0	Tool Wt. 1000.00 lbs
Inside/Outside	I	I	O			Wt Set On Packer 20000.00 lbs
						Wt Pulled Loose 55000.00 lbs
						Initial Str Wt 48000.00 lbs
						Unseated Str Wt 50000.00 lbs
						Bot Choke 0.75 in
						Hole Size 7.88 in
						D Col. ID 0.00 in
						D. Pipe ID 3.80 in
						D.C. Length 0.00 ft
						D.P. Length 3525.00 ft

RECOVERY

Tot Fluid 836.00 ft of 0.00 ft in DC and 836.00 ft in DP
 216.00 ft of Heavy mud cut gassy oil 10%g 60%o 30%m
 186.00 ft of Heavy mud cut gassy oil 10%g 70%o 20%m
 434.00 ft of Clean gassy oil 10%g 90%o
 0.00 ft of
 0.00 ft of
 0.00 ft of NO WATER
 0.00 ft of
 0.00 ft of
 SALINITY 0.00 P.P.M. A.P.I. Gravity 0.00

BLOW DESCRIPTION

Initial Flow -
 Strong - Bottom of bucket in 10 min
 Final Flow -
 Strong - Bottom of bucket in 10 min

SAMPLES:
 SENT TO:

MUD DATA-----
 Mud Type Chem/Starch
 Weight 9.00 lb/cf
 Vis. 45.00 S/L
 W.L. 12.80 in3
 F.C. 0.00 in
 Mud Drop N
 Amt. of fill 0.00 ft
 Btm. H. Temp. 120.00 F
 Hole Condition Good
 % Porosity 0.00
 Packer Size 6.75 in
 No. of Packers 2
 Cushion Amt. 0.00
 Cushion Type
 Reversed Out N
 Tool Chased N
 Tester Dan Bangle
 Co. Rep. Jerry Green
 Contr. Discovery
 Rig # 2
 Unit #
 Pump T.

Test Successful: Y

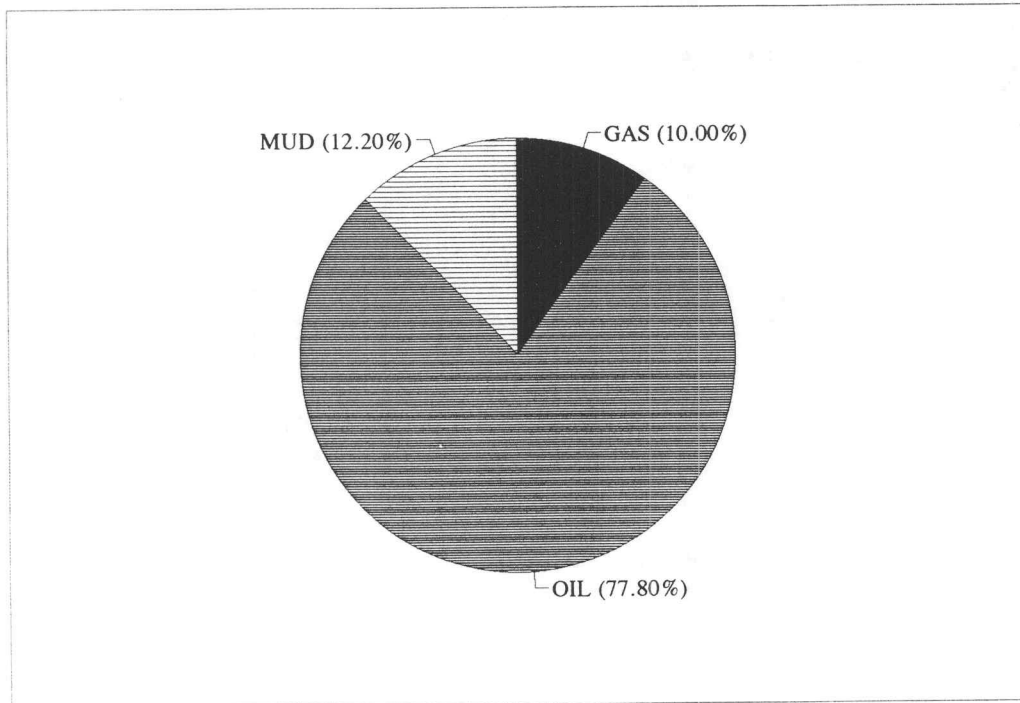
CALCULATED RECOVERY ANALYSIS - DRILL PIPE

DST 2

TICKET 9523

SAMPLE #	TOTAL FEET	GAS		OIL		WATER		MUD	
		%	FEET	%	FEET	%	FEET	%	FEET
1	216	10	21.6	60	129.6	0	0	30	64.8
2	186	10	18.6	70	130.2	0	0	20	37.2
3	434	10	43.4	90	390.6	0	0	0	0
4			0		0	0	0		0
5			0		0	0	0		0
6			0		0	0	0		0
TOTAL	836		83.6		650.4		0		102

			HRS OPEN		BBL/DAY
BBL OIL =	9.24869	*	1.5	=	147.979
BBL WATER =	0	*		=	0
BBL MUD =	1.45044				
BBL GAS =	1.18879				

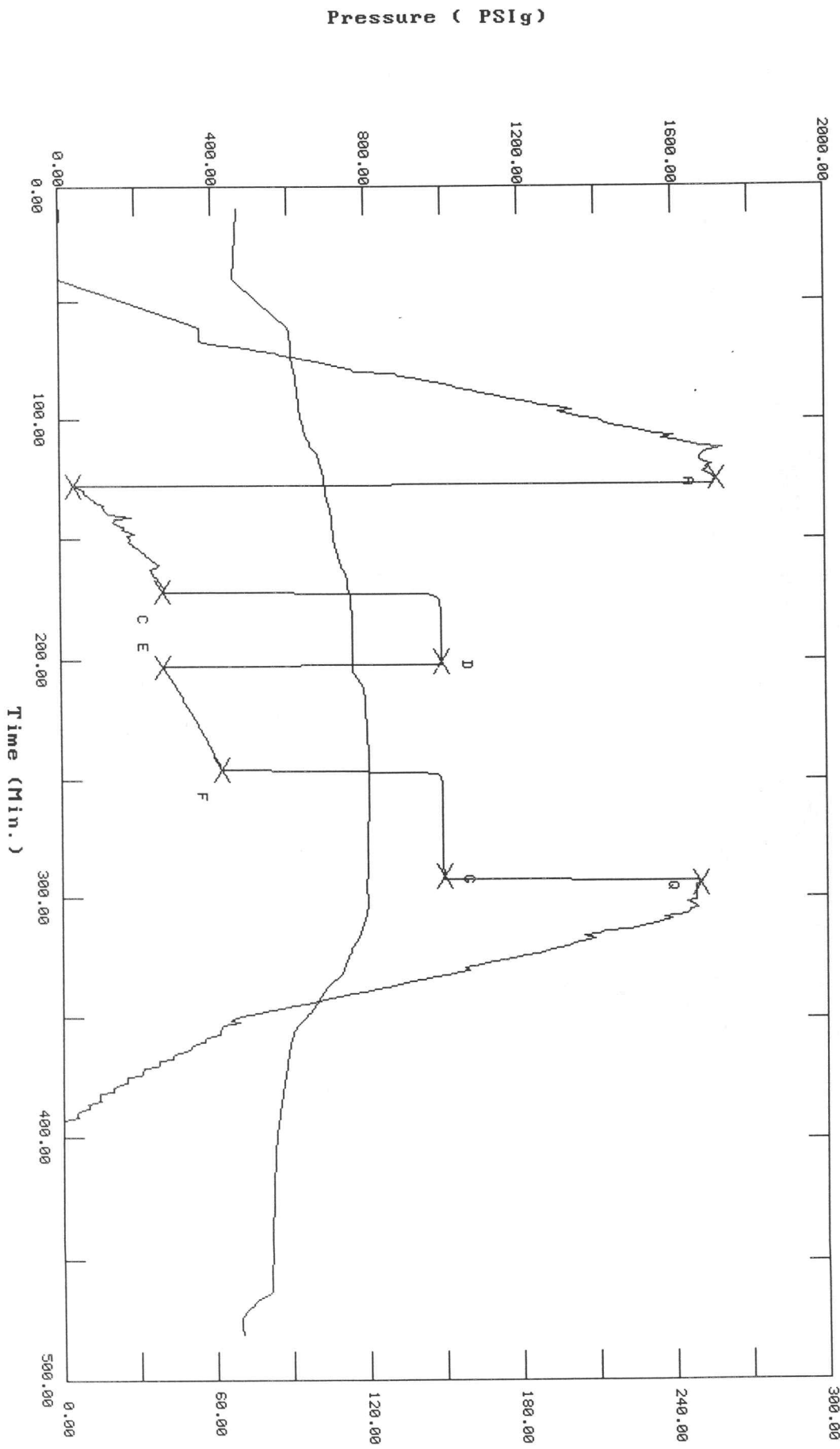


TEST HISTORY

TK# 9523 DST#2 Vine #9 Castle Res Inc.

Flag Points

t (Min.)	P (PSIG)
A: 0.00	1717.00
B: 0.00	36.14
C: 44.00	267.96
D: 29.00	997.46
E: 0.00	267.18
F: 43.00	419.69
G: 45.00	997.81
Q: 0.00	1669.31

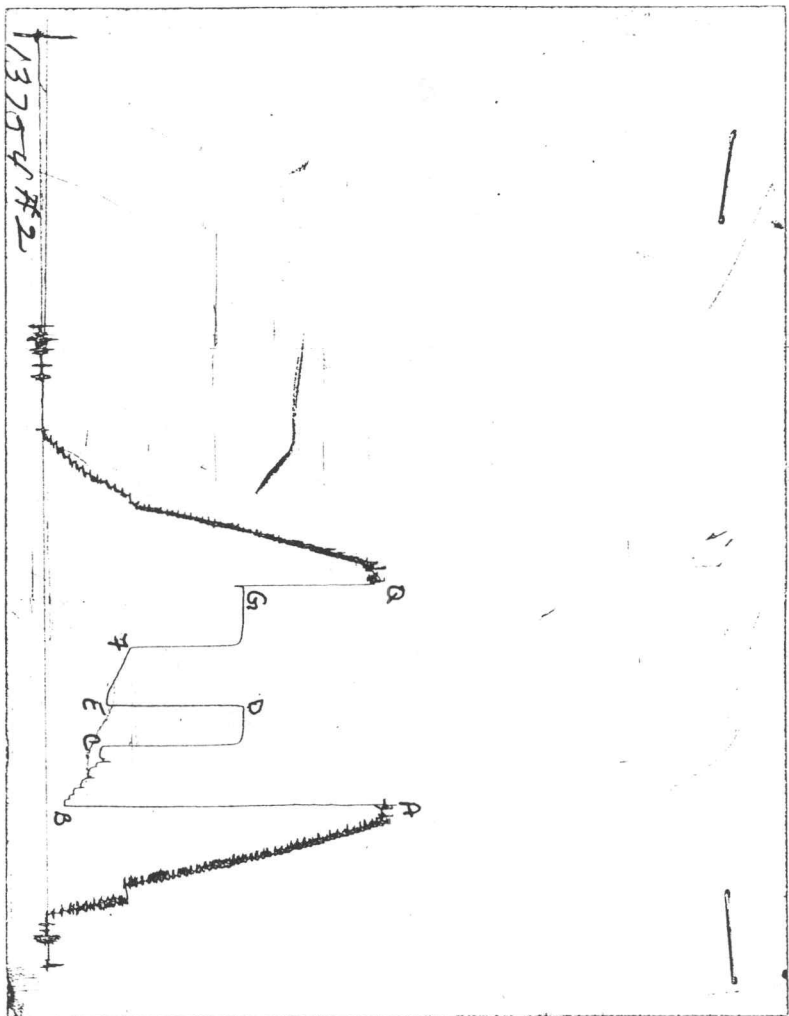


Pressure (PSIG)

Temperature (DEG F)

Time (Min.)

CHART PAGE



This is a photocopy of the actual AK-1 recorder chart

 ALPINE SUBSURFACE ELECTRONICS PROBE INCREMENTS LISTING

TEST: Tk# 9523 DST#2 Vine #9 Castle Res Inc.

DATE: 09/23/96

TIME: 23:31:33

	Time	Pressure PSig	delta P PSig	Temp. DEG F	(T+dT)/dT	P ² /10 ⁶
***** Initial Hydro.	125.00	1717.0	0.0	103.62		
***** Start Flow 1	0.00	36.1	0.0	103.94		
	1.00	55.6	19.5	104.02		
	2.00	61.0	24.9	104.14		
	3.00	64.3	28.2	104.30		
	4.00	74.3	38.2	104.50		
	5.00	78.7	42.6	104.71		
	6.00	88.6	52.5	104.91		
	7.00	90.7	54.5	105.19		
	8.00	116.0	79.9	105.49		
	9.00	108.7	72.6	105.74		
	10.00	115.2	79.0	105.92		
	11.00	124.0	87.8	106.12		
	12.00	130.4	94.2	106.30		
	13.00	185.8	149.6	106.43		
	14.00	141.1	105.0	106.54		
	15.00	138.5	102.3	106.64		
	16.00	149.1	113.0	106.74		
	17.00	166.0	129.8	106.83		
	18.00	161.1	124.9	106.92		
	19.00	172.9	136.8	107.01		
	20.00	196.2	160.0	107.09		
	21.00	174.4	138.2	107.21		
	22.00	184.0	147.8	107.33		
	23.00	179.8	143.7	107.48		
	24.00	185.7	149.6	107.66		
	25.00	190.6	154.5	107.85		
	26.00	203.4	167.3	108.08		
	27.00	209.8	173.6	108.32		
	28.00	217.2	181.1	108.61		
	29.00	223.3	187.2	108.93		
	30.00	235.7	199.6	109.21		
	31.00	238.8	202.7	109.43		
	32.00	250.9	214.8	109.64		
	33.00	259.2	223.1	110.05		
	34.00	250.1	214.0	110.55		
	35.00	234.3	198.1	111.09		
	36.00	238.0	201.8	111.59		
	37.00	244.7	208.6	111.96		
	38.00	250.3	214.1	112.26		
	39.00	254.3	218.1	112.44		
	40.00	258.2	222.0	112.56		
	41.00	262.6	226.4	112.64		
	42.00	266.2	230.1	112.78		
	43.00	270.4	234.3	112.97		
***** End Flow 1	44.00	268.0	231.8	113.14		
***** Start Shutin 1	0.00	268.0	0.0	113.14	0.0000	0.072
	1.00	959.4	691.5	113.42	45.0000	0.920
	2.00	983.5	715.5	113.69	23.0000	0.967
	3.00	989.3	721.4	113.89	15.6667	0.979
	4.00	991.5	723.6	114.06	12.0000	0.983

ALPINE SUBSURFACE ELECTRONICS PROBE INCREMENTS LISTING

TEST: Tk# 9523 DST#2 Vine #9 Castle Res Inc.

DATE: 09/23/96 TIME: 23:31:33

	Time	Pressure PSIg	delta P PSIg	Temp. DEG F	(T+dT)/dT	P^2/10^6
	5.00	992.7	724.8	114.16	9.8000	0.986
	6.00	993.5	725.6	114.17	8.3333	0.987
	7.00	994.2	726.2	114.20	7.2857	0.988
	8.00	994.6	726.6	114.23	6.5000	0.989
	9.00	994.9	727.0	114.24	5.8889	0.990
	10.00	995.0	727.1	114.26	5.4000	0.990
	11.00	995.3	727.4	114.29	5.0000	0.991
	12.00	995.4	727.5	114.31	4.6667	0.991
	13.00	995.7	727.7	114.33	4.3846	0.991
	14.00	995.9	727.9	114.35	4.1429	0.992
	15.00	996.0	728.0	114.37	3.9333	0.992
	16.00	996.2	728.2	114.39	3.7500	0.992
	17.00	996.3	728.3	114.43	3.5882	0.993
	18.00	996.4	728.4	114.46	3.4444	0.993
	19.00	996.6	728.6	114.48	3.3158	0.993
	20.00	996.7	728.7	114.51	3.2000	0.993
	21.00	996.8	728.8	114.52	3.0952	0.994
	22.00	996.9	728.9	114.55	3.0000	0.994
	23.00	996.9	728.9	114.55	2.9130	0.994
	24.00	997.0	729.0	114.58	2.8333	0.994
	25.00	997.1	729.1	114.59	2.7600	0.994
	26.00	997.1	729.2	114.62	2.6923	0.994
	27.00	997.2	729.3	114.68	2.6296	0.994
	28.00	997.4	729.5	114.68	2.5714	0.995
***** End Shut-in 1	29.00	997.5	729.5	114.73	2.5172	0.995
***** Start Flow 2	0.00	267.2	0.0	114.69		
	1.00	271.8	4.6	114.71		
	2.00	275.7	8.5	114.79		
	3.00	278.6	11.4	115.05		
	4.00	281.8	14.6	115.71		
	5.00	285.9	18.7	116.44		
	6.00	290.1	22.9	117.11		
	7.00	294.8	27.6	117.71		
	8.00	298.8	31.6	118.16		
	9.00	302.7	35.5	118.48		
	10.00	306.7	39.5	118.71		
	11.00	311.0	43.9	118.95		
	12.00	314.2	47.0	119.08		
	13.00	318.1	50.9	119.18		
	14.00	320.0	52.8	119.28		
	15.00	323.7	56.5	119.34		
	16.00	327.4	60.2	119.40		
	17.00	330.9	63.7	119.45		
	18.00	335.3	68.1	119.49		
	19.00	339.4	72.2	119.52		
	20.00	343.6	76.4	119.57		
	21.00	347.0	79.9	119.61		
	22.00	350.6	83.5	119.66		
	23.00	354.0	86.8	119.71		
	24.00	357.3	90.1	119.75		
	25.00	360.9	93.7	119.81		

ALPINE SUBSURFACE ELECTRONICS PROBE INCREMENTS LISTING

TEST: Tk# 9523 DST#2 Vine #9 Castle Res Inc.

DATE: 09/23/96

TIME: 23:31:33

Time	Pressure PSIg	delta P PSIg	P	Temp. DEG F	(T+dT)/dT	P^2/10^6
26.00	364.3	97.1		119.87		
27.00	367.5	100.4		119.92		
28.00	371.2	104.0		119.97		
29.00	374.5	107.3		120.02		
30.00	377.6	110.4		120.07		
31.00	381.1	113.9		120.15		
32.00	384.7	117.5		120.21		
33.00	387.8	120.6		120.26		
34.00	390.9	123.8		120.31		
35.00	394.1	127.0		120.36		
36.00	397.6	130.5		120.40		
37.00	400.7	133.5		120.40		
38.00	403.9	136.7		120.42		
39.00	406.8	139.6		120.46		
40.00	410.3	143.1		120.47		
41.00	413.5	146.3		120.48		
42.00	416.7	149.5		120.52		
43.00	419.7	152.5		120.55		
***** End Flow 2						
***** Start Shutin 2	0.00	419.7	0.0	120.55	0.0000	0.176
	1.00	933.7	514.0	120.58	88.0000	0.872
	2.00	983.5	563.8	120.61	44.5000	0.967
	3.00	990.9	571.2	120.66	30.0000	0.982
	4.00	993.1	573.4	120.68	22.7500	0.986
	5.00	994.1	574.4	120.69	18.4000	0.988
	6.00	994.7	575.0	120.69	15.5000	0.989
	7.00	995.0	575.3	120.60	13.4286	0.990
	8.00	995.3	575.6	120.54	11.8750	0.991
	9.00	995.5	575.8	120.62	10.6667	0.991
	10.00	995.7	576.0	120.57	9.7000	0.991
	11.00	995.9	576.2	120.54	8.9091	0.992
	12.00	996.0	576.3	120.50	8.2500	0.992
	13.00	996.0	576.3	120.46	7.6923	0.992
	14.00	996.2	576.5	120.44	7.2143	0.992
	15.00	996.3	576.6	120.41	6.8000	0.993
	16.00	996.4	576.7	120.40	6.4375	0.993
	17.00	996.5	576.8	120.38	6.1176	0.993
	18.00	996.6	576.9	120.35	5.8333	0.993
	19.00	996.7	577.0	120.33	5.5789	0.993
	20.00	996.8	577.1	120.25	5.3500	0.994
	21.00	996.8	577.1	120.25	5.1429	0.994
	22.00	996.9	577.2	120.18	4.9545	0.994
	23.00	996.9	577.2	120.14	4.7826	0.994
	24.00	997.0	577.3	120.14	4.6250	0.994
	25.00	997.0	577.4	120.08	4.4800	0.994
	26.00	997.1	577.4	120.05	4.3462	0.994
	27.00	997.2	577.5	120.00	4.2222	0.994
	28.00	997.1	577.4	120.01	4.1071	0.994
	29.00	997.2	577.5	119.98	4.0000	0.994
	30.00	997.3	577.6	119.98	3.9000	0.995
	31.00	997.3	577.6	119.95	3.8065	0.995
	32.00	997.2	577.5	119.94	3.7188	0.994

 ALPINE SUBSURFACE ELECTRONICS PROBE INCREMENTS LISTING

TEST: Tk# 9523 DST#2 Vine #9 Castle Res Inc.

DATE: 09/23/96

TIME: 23:31:33

	Time	Pressure PSig	delta P PSig	Temp. DEG F	(T+dT)/dT	P^2/10^6	
	33.00	997.3	577.6	119.91	3.6364	0.995	
	34.00	997.4	577.7	119.88	3.5588	0.995	
	35.00	997.5	577.8	119.85	3.4857	0.995	
	36.00	997.5	577.8	119.84	3.4167	0.995	
	37.00	997.5	577.8	119.81	3.3514	0.995	
	38.00	997.6	577.9	119.84	3.2895	0.995	
	39.00	997.6	577.9	119.77	3.2308	0.995	
	40.00	997.7	578.0	119.75	3.1750	0.995	
	41.00	997.6	577.9	119.75	3.1220	0.995	
	42.00	997.7	578.0	119.71	3.0714	0.995	
	43.00	997.8	578.1	119.68	3.0233	0.996	
	44.00	997.8	578.1	119.65	2.9773	0.996	
*****	End Shut-in 2	45.00	997.8	578.1	119.63	2.9333	0.996
*****	Final Hydro.	294.00	1669.3	0.0	119.62		

*** TOOL DIAGRAM *** CONV

WELL NAME: Vine #9

LOCATION : 26-11-19-Ellis-Co-Ks.

TICKET No. 9523 D.S.T. No. 2 DATE 9-23-96

TOTAL TOOL TO BOTTOM OF TOP PACKERS 20

INTERVAL TOOL

BOTTOM PACKERS AND ANCHOR 90

TOTAL TOOL 110

DRILL COLLAR ANCHOR IN INTERVAL

D.C. ANCHOR STND.Stands Single Total

D.P. ANCHOR STND.Stands 1 Single Total 60

TOTAL ASSEMBLY 110

D.C. ABOVE TOOLS.Stands Single Total

D.P. ABOVE TOOLS.Stands57 Single Total 3525

TOTAL DRILL COLLARS DRILL PIPE & TOOLS .. 3629

TOTAL DEPTH 3610

TOTAL DRILL PIPE ABOVE K.B. 19

REMARKS:

Plugging on initial flow

P.O. SUB	
C.O. SUB	3500
S.I. TOOL STERLING	3506
HMV STERLING	3511
JARS NA	
SAFETY JOINT NA	
PACKER	3515
PACKER	3520
DEPTH 3520	
STUBB 1'	3521
ANCHOR 4' Perfs	3525
1' co sub	3526
Alpine recorder	3526
1 std dp 60'	3586
1' co sub	3587
T.C.	
DEPTH	
5' Perfs	3592
5' Perfs	3597
5' Perfs	3602
3' Perfs	3605
AK-1 recorder	3607
BULLNOSE 5' Bullplug	3610
T.D.	