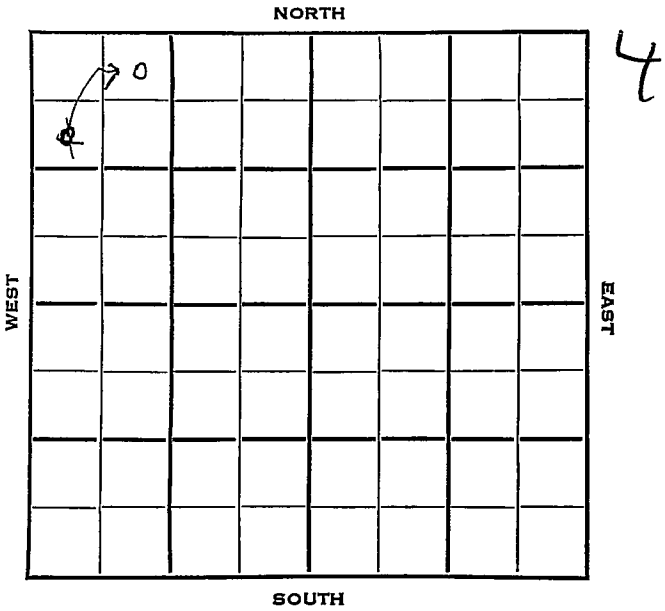


Section 26 Township 11 Range 19 W

Well No. # 5 Vine "A"

Company Jones, Shelburne & Farmer



Sec. 26 Twp. 11 R. 19W

Well No. #5 Vine "A" Farm

Jones, Shelburne & Farmer Company

J-S-F Contractor

330
990 Ft. from N. Line

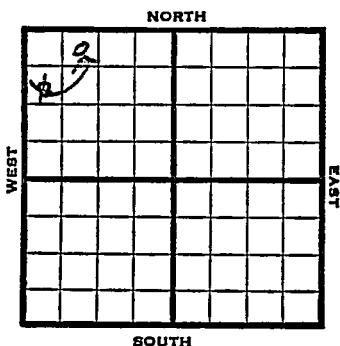
_____ Ft. from S. Line

_____ Ft. from E. Line

990
330 Ft. from W. Line

~~SW NW NE~~

NE NW NW



1953

Elev. 2108'

REPORT

5/20 MIR

5/28 8" @ 160'

DrLg 2933'

6/3 Anhy 1407, Heeb 2289, Tor 3305, Lans 3329, Arb 3615

RTD 3620

5" @ 3614'

6/10 WOCT

6/24 CO 3620 S/3 BOPH DD 3624 TD
S/21 BOPH 5 hrs. 500 A POP

7/1 Spud 5-14-53 Oil well TD 3624
8" @ 160 Anhy 1407 Heeb 3289
Tor. 3305 Lans 3329 Arb. 3615
TD 3620 5" @ 3614 CO to 3620
S/3 BOPH DD 3624 S/21 BOPH 5 hr.
500 A
Comp. 2055 BOPD

COMPLETED

Map No. _____ Sec. 26 Twp. 11 R. 19W

Well No. 5 Vine "A"

Jones, Shelburne & Farmer Company

CORRECTION

Contractor

NE NW NW

SECTION PLAT

330 Ft. from N. Line

_____ Ft. from S. Line

_____ Ft. from E. Line

990 Ft. from W. Line

0			
		3	

Ellis County

Location _____

Rig up _____

Drilling and Remarks:

Reported
SW NW NW

RECORD

Cased _____ in., _____ ft.

Sand _____

Gas _____

Oil _____

Total Depth _____

PRODUCTION

1st 24 hrs. Nat. _____

1st 24 hrs. after shot _____

Gas _____ Cu. Ft.

Dry Hole _____

Abandoned _____

Date

MAY 27 1953

19

J. G. McGEHEE

Scout

County Ellis State Kansas

Sec. 26 (Blk. 11) (Sur. 19W) (Twp.) (Rge.) Map No.

Operator Jones, Shelburne & Farmer

Well No. 5 Farm Vine "A"

Elev. 2108 Location NE NW NW

0					

330Ft. From N Line NW

990Ft. From W Line Quarter

1st. Report

Completion JUL 1 1953

Remarks

J-S-F - Condr.

Spudding Date 5-14-53

Drlg. Data Oil well TD 3624

8" @ 160 Anhy 1407 Heeb. 3289

Tor. 3305 Lens. 3329 Arb. 3615

TD 3620 5" @ 3614 CO to 3620

S/ 3 boph DD 3624 S/ 21 boph 5 hr.

500 A Comp. 2055 bopd