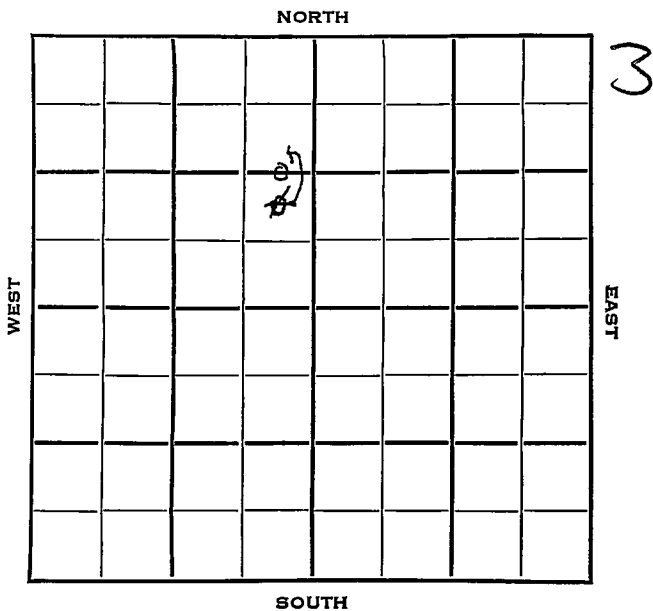


Section 26 Township 11 Range 19 W

Well No. # 7 Vine "A"

Company Jones, Shelburne & Farmer



Sec. 26 Twp. 11 R. 19 W

Well No. # 7 Vine "A" Farm

Jones, Shelburne & Farmer Company

J-S-F Contractor

Soloman Pool

Ft. from N. Line

1320

Ft. from S. Line

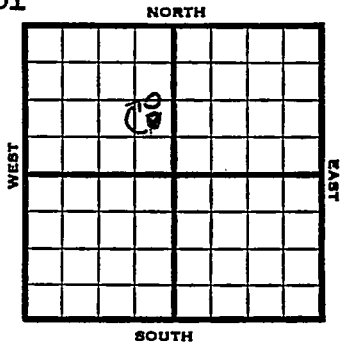
~~990~~

Ft. from E. Line

330

Ft. from W. Line

C E/2 E/2 NW
~~NE SE NW~~



1953 Elev. 2106' REPORT

8/26 Location

9/9 "

9/16 8" @ 170
Drlg. 2630'

9/23 Heeb 3297', Tor 3313', Lans 3336',
Arb. 3623'
RTD 3628
5" @ 3624'

9/30 N.R.

10/7 CO 3628' S/45 BOPH 4 hrs.

10/14 NR

10/21 NR

11/4 NR

11/11 "

11/18 Spud 9-1-53

Oil Well

TD 3628'

8" @ 170'

Heeb 3297', Tor 3313', Lans 3336',
Arb 3623',

TD 3628'

5" @ 3624'

OVER

1953

61-53 - 11-18-53

Information brought forward.

11/18

TD 3628'

5" @ 3624'

CO to 3628'

S/ 34 boph 4 hr.

Comp 3000 bopd.

COMPLETED

Map No. _____ Sec. 26 Twp. 11 R. 19W

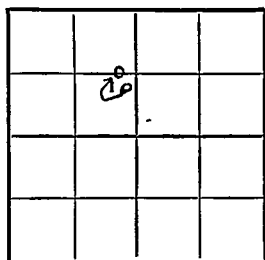
Well No. 7 Vine "A"

Jones, Shelburne & Farmer Company

CORRECTION Contractor

C $E\frac{1}{2}$ $E\frac{1}{2}$ NW

SECTION PLAT



_____ Ft. from N. Line

1320 Ft. from S. Line

330 Ft. from E. Line

_____ Ft. from W. Line

Ellis County

Location _____

Rig up _____

Drilling and Remarks:

Reported
NE SE NW

RECORD

Cased _____ in., _____ ft.

Sand _____

Gas _____

Oil _____

Total Depth _____

PRODUCTION

1st 24 hrs. Nat. _____

1st 24 hrs. after shot _____

Gas _____ Cu. Ft.

Dry Hole _____

Abandoned _____

Date

SEP 2 1953
19

J. G. McGEHEE Scout

