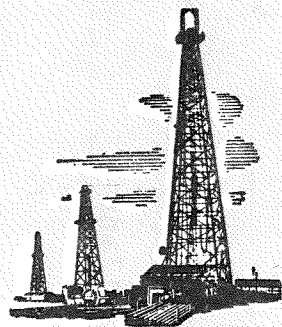


3

RECEIVED
JUL 26 1965
NORTH-CENTRAL REGION
GEOLOGICAL DEPARTMENT
RECEIVED TO.....



REINHARDT'S SERVICES

BOX 601
RUSSELL, KANSAS

DRILL STEM TEST REPORT

3

LEASE Dickman WELL NO. 1
DST. NO. 1

7

DATE 7-12-65

TICKET NO 853

COMPANY J. O. Farmer, Inc. CONTRACTOR Co. tools

WELL NO. 1 LEASE Dickman COUNTY Gove SEC. 5 RG. 11 TWP. 30

TEST NO. 1 HOLE SIZE 7 7/8" PACKER SIZE 6 3/4" TOOL JOINT 4 1/2" FH

ANCHOR LENGTH 60' AIR CHAMBER LENGTH --- SIZE CHOKER 1/2"

FORMATION INTERVAL TESTED K.C. 4120'-4180' ELEVATION 2937' DF T. D. 4180'

MUD WEIGHT 10.2 VISCOSITY 34 WATER LOSS 14.4cc

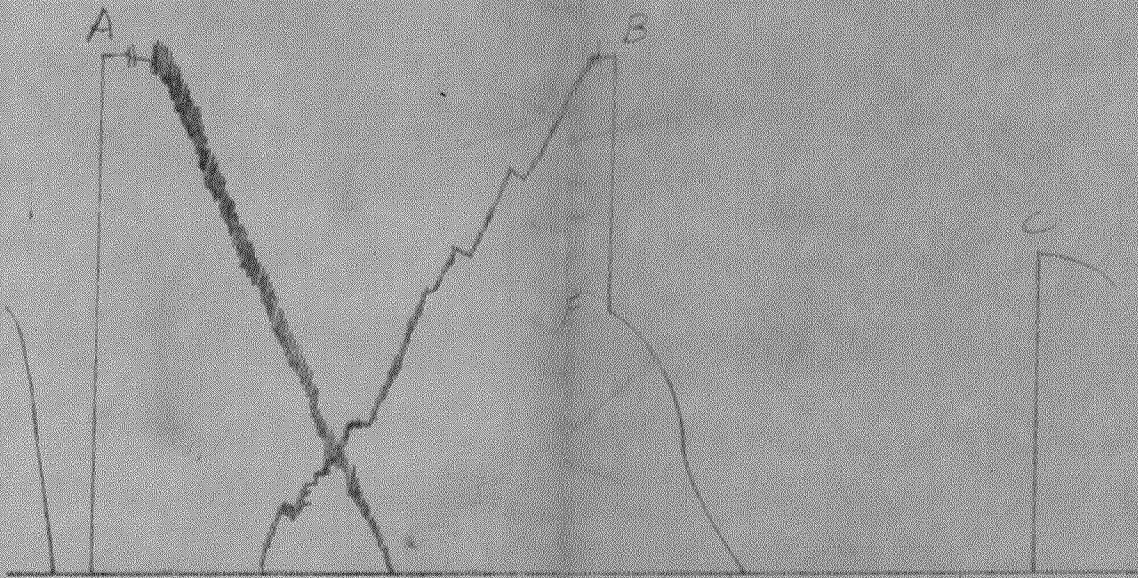
TOOL OPEN 1 hr. IBHP SHUT IN TIME 30 min. FBHP SHUT IN TIME 30 min.

BLOW Weak for 5 min.

RECOVERY 20' of very slightly oil cut mud.

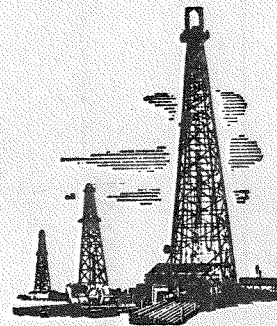
REMARKS _____

APPROVED BY Sam Farmer TESTER Glen Seilens



PRESSURE READINGS	
A. Initial Hyd. Pressure	2230
B. Final Hyd. Pressure	2230
C. Initial BHP	1350
D. Initial Flow Pressure	0
E. Final Flow Pressure	0
F. Final BHP	1131

RECEIVED
NO. _____ JUL 26 1965
GEOLOGICAL DEPARTMENT
RETURNED TO _____



REINHARDT'S SERVICES

BOX 601

RUSSELL, KANSAS

DRILL STEM TEST REPORT

LEASE _____ Dickman _____ WELL NO. 1

DST. NO. 2

7

DATE 7-15-65

TICKET NO 854

COMPANY J. O. Farmer, Inc. CONTRACTOR Co. tools

WELL NO. 1 LEASE Dickman COUNTY Gove SEC. 5 RG 30 TWP. 11

TEST NO. 2 HOLE SIZE 7 7/8" PACKER SIZE 6 3/4" TOOL JOINT 4 1/2" PH

ANCHOR LENGTH 52' AIR CHAMBER LENGTH ----- SIZE CHOKE 1/2"

FORMATION Mississippi INTERVAL TESTED 4654'- 4706' ELEVATION 2942' KB T D 4706'

MUD WEIGHT 10.5 VISCOSITY 42 WATER LOSS 12.600

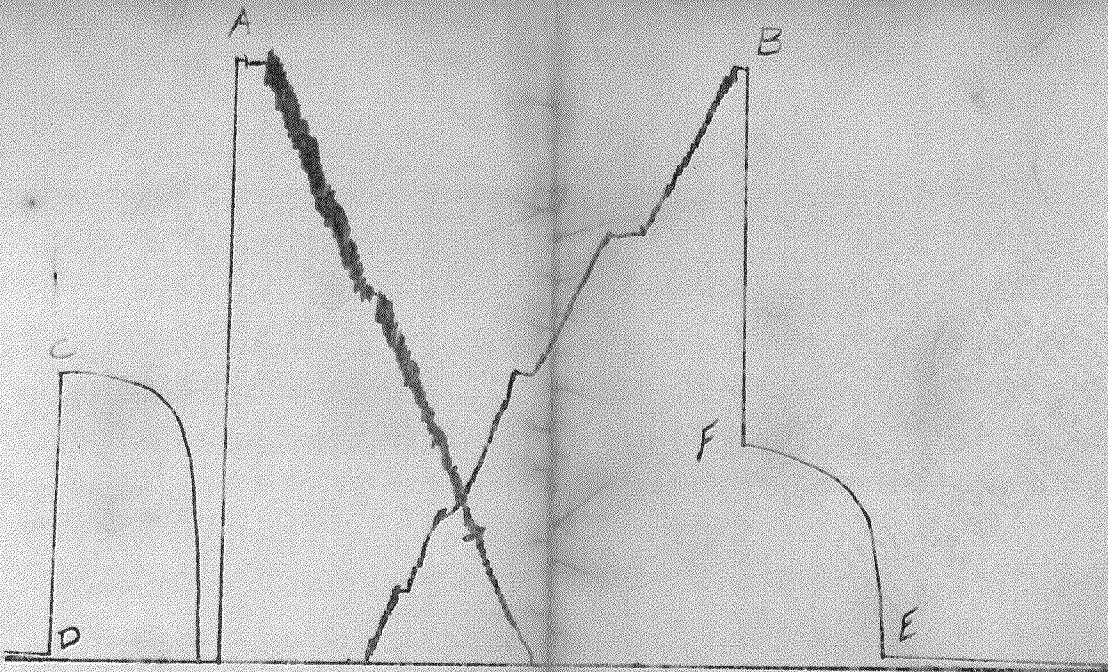
TOOL OPEN 1 hr. IBHP SHUT IN TIME 30 min. FBHP SHUT IN TIME 30 min.

SLOW Weak through out test.

RECOVERY 90' of drilling mud.

REMARKS -----

APPROVED BY Sam Farmer ESTER Gene Reinhardt



PRESSURE READINGS	
A. Initial Hyd. Pressure	2600
B. Final Hyd. Pressure	2600
C. Initial BHP	1258
D. Initial Flow Pressure	11
E. Final Flow Pressure	68
F. Final BHP	979