

*Handwritten initials*

STATE CORPORATION COMMISSION OF KANSAS  
OIL & GAS CONSERVATION DIVISION  
WELL COMPLETION OR RECOMPLETION FORM  
ACO-1 WELL HISTORY  
DESCRIPTION OF WELL AND LEASE

API NO. 15-.....063-20,958.....  
County.....Gove.....  
110' S of  
NW NW NW Sec. 21 Twp. 11 Rge. 31 East  
..... West

Operator: License # 5011  
Name Viking Resources  
Address 217 E. William  
Wichita, KS 67202-4005  
City/State/Zip

.....4840  
.....4950  
.....Ft North from Southeast Corner of Section  
.....Ft West from Southeast Corner of Section  
(Note: Locate well in section plat below)

Purchaser Koch Oil Company  
Wichita, KS

Lease Name Wieland Well # 2

Operator Contact Person Jim Devlin  
Phone 316-262-2502

Field Name Penny East

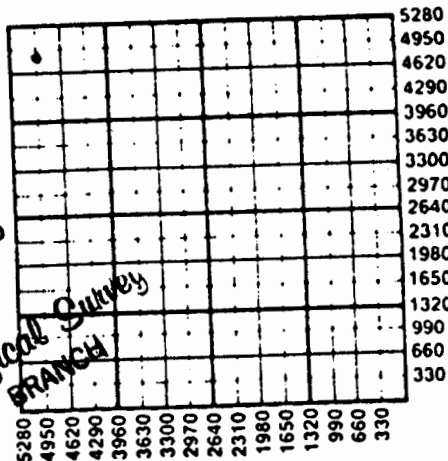
Producing Formation Lower Pawnee

Contractor: License # 5420  
Name White and Ellis Drilling, Inc.

Elevation: Ground 2981 KB 2986

Wellsite Geologist Jim Maloney  
Phone 316-262-2502

Section Plat



Designate Type of Completion  
 New Well  Re-Entry  Workover  
 Oil  SWD  Temp Abd  
 Gas  Inj  Delayed Comp.  
 Dry  Other (Core, Water Supply etc.)

NOV 25 1985  
State Geological Survey  
WICHITA BRANCH

If **OWNO**: old well info as follows:  
Operator  
Well Name  
Comp. Date Old Total Depth

WATER SUPPLY INFORMATION

Disposition of Produced Water:  Disposal  
Docket # 97736-C  
(C-16920)  Repressuring

WELL HISTORY  
Drilling Method:  
 Mud Rotary  Air Rotary  Cable  
9-4-85 9-13-85 9-26-85  
Spud Date Date Reached TD Completion Date  
4605 4573  
Total Depth PBTD

Questions on this portion of the ACO-1 call:

Water Resources Board (913) 296-3717

Source of Water:  
Division of Water Resources Permit #

Groundwater 105  
.....3790  
.....Ft North from Southeast Corner  
(Well) .....Ft West from Southeast Corner of  
Sec 8 Twp 11 Rge 31 East  West

Surface Water.....Ft North from Southeast Corner  
(Stream, pond etc).....Ft West from Southeast Corner  
Sec Twp Rge East West

Other (explain).....  
(purchased from city, R.W.D. #)

Amount of Surface Pipe Set and Cemented at 342 feet  
Multiple Stage Cementing Collar Used?  Yes  No  
If yes, show depth set 2500 feet  
If alternate 2 completion, cement circulated  
from 2500 feet depth to surf 920 SX cmt  
Cement Company Name Allied Cementing  
Invoice # 44213

INSTRUCTIONS: This form shall be completed in duplicate and filed with the Kansas Corporation Commission, 200 Colorado Derby Building, Wichita, Kansas 67202, within 90 days after completion or recompletion of any well. Rule 82-3-130 and 82-3-107 apply.

Information on side two of this form will be held confidential for a period of 12 months if requested in writing and submitted with the form. See rule 82-3-107 for confidentiality in excess of 12 months. One copy of all wireline logs and drillers time log shall be attached with this form. Submit CP-4 form with all plugged wells. Submit CP-111 form with all temporarily abandoned wells.

All requirements of the statutes, rules and regulations promulgated to regulate the oil and gas industry have been fully complied with and the statements herein are complete and correct to the best of my knowledge.

Operator Name **Viking Resources** Lease Name **Wieland** Well # **2**

Sec. **21** Twp. **11** Rge. **31**  East  West County **GOVE**

Estimated Production Per 24 Hours	103 Bbls	0 MCF	20 Bbls	CFPB
-----------------------------------	----------	-------	---------	------

METHOD OF COMPLETION

Production Interval

Disposition of gas:  Vented  Open Hole  Perforation  
 Sold  Other (Specify) **4558-4561**

Drill Stem Tests Taken  Yes  No  
 Samples Sent to Geological Survey  Yes  No  
 Cores Taken  Yes  No

Formation Description  
 Log  Sample

DST #1, 4140-4235, 30-30-60-60, Rec. 265' Gas in Pipe, 130' Free Oil, 120' Gassy Heavy Oil Cut Mud, 60' Gassy Oil Cut Mud, BHP: 1200/1200#, HP: 125/135# 173/192#, HP: 2151/2104#, BHT: 113°  
 DST #2, 4230-4300, 30-30-60-60, Rec. 970' Gas In Pipe, 170' Gassy Muddy Oil, 60' Gassy Muddy Oil, 60' Gassy Heavy Oil Cut Mud, 60' Gassy Water and Oil Cut Mud, 180' Slightly Oil and Mud Cut Salt Water, BHP: 1184/1184#, FP: 104/155# 197/259#, HP: 2264/2243#, T: 114°  
 DST #3, 4294-4350, 30-30-60-60, Rec. 5' Free Oil, 75' Muddy Oil, 60' Gassy Slightly Oil Cut Mud, 60' Slightly Oil Cut Mud, BHP: 1191/1219#, FP: 73/93# 114/145#, HP: 2514/2441#, BHT: 115°  
 DST #4, 4448-4475, 30-45-30-45, GTS in 7 minutes, Rec. 750' Clean Gassy Oil, 180' Gassy Muddy Oil, 180' Gassy Mud Cut Oil, 120' Salt Water, BHP: 1009/1000#, FP: 135/245# 336/413#, HP: 2257/2210#, BHT: 116°  
 DST #5, 4530-4570, 30-45-45-60, Rec. 90' Gassy Heavy Oil Cut Mud, BHP: 249/311#, FP: 41/52 52/62#, HP: 2380/2360#, BHT: 117°

Name	Top	Bottom
Anhydrite	2496 (+490)	
B. Anhydrite	2532 (+454)	
Heebner	3973 (-987)	
Toronto	4001 (-1015)	
LKC	4018 (-1032)	
Stark Shale	4232 (-1246)	
BKC	4294 (-1308)	
Marmaton	4326 (-1340)	
Pawnee	4414 (-1428)	
Myrick Station	4458 (-1472)	
Ft. Scott	4481 (-1495)	
Lower Cher Sh	4508 (-1522)	
Johnson	4550 (-1564)	
Mississippian	4579 (-1593)	
RTD	4605 (-1619)	
LTD	4607 (-1621)	

CASING RECORD  New  Used

Report all strings set-conductor, surface, intermediate, production, etc.

Purpose of String	Size Hole Drilled	Size Casing Set (in O.D.)	Weight Lbs/Ft.	Setting Depth	Type of Cement	#Sacks Used	Type and Percent Additives
Surface	12 1/4	8-5/8	20	350	60/40 Poz	195	2% gel, 3% CC
Production	7-7/8	5 1/2	15.5	4604	Phixotropic	250	

PERFORATION RECORD

Acid, Fracture, Shot, Cement Squeeze Record (Amount and Kind of Material Used) Depth

Shots Per Foot	Specify Footage of Each Interval Perforated	Depth
3	4558-4561	1000 gallons 15% NF

TUBING RECORD

Size 2-3/8" Set At 4470 Packer at None

Liner Run  Yes  No

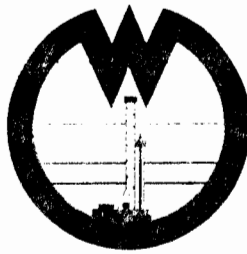
Date of First Production

Producing Method

9-30-85

Flowing  Pumping  Gas Lift  Other (explain).....

Oil	Gas	Water	Gas-Oil Ratio	Gravity
-----	-----	-------	---------------	---------



21- 11- 314

RECEIVED  
STATE CORPORATION COMMISSION

SEP 20 1985

**WHITE**

WICHITA, KANSAS  
Wichita, Kansas

ANDELLIS DRILLING, Inc.

DRILLERS LOG

OPERATOR: Viking Resources  
217 E. William  
Wichita, Kansas 67202

CONTRACTOR: White & Ellis Drilling, Inc., 401 E. Douglas, Suite 500,  
Wichita, Ks. 67202

Lease Name Weiland Well No. 2

Sec. 21 T. 11S R. 31W Spot 110' S NW NW NW

County Gove State Kansas Elevation \_\_\_\_\_

Casing Record:

Surface: 8 5/8 @ 350' with 2% gel.  
3% cc 195 sx.

Production: 5 1/2 @ 4604' with 250 sx.

Type Well: Oil Well Total Depth 4605

Drilling Commenced 9-4-85 Drilling Completed 9-14-85

Formation	From	To	Tops
Cellar	0	7	Anhydrite -2498
and, Shale	7	356	
Shale, Sand	356	1806	
Sand	1806	1991	
Shale, Sand, Lime	1991	2170	
Shale, Lime	2170	2929	
Lime, Shale	2929	3399	
Shale, Lime	3399	3550	
Lime, Shale	3550	4087	
Lime	4087	4605	

OCT 01 1985

State Geological Survey  
WICHITA BRANCH