

This is to replace previous contractor's well log.

State Geological Survey
KANSAS DRILLERS LOG
WICHITA, KANSAS

API No. 15 — 063 — 20,185
County Number

Operator

Abercrombie Drilling, Inc.

Address 801 Union Center
Wichita, Kansas

Well No.

#1

Lease Name

Bloom "B"

Footage Location

990 feet from (N) (S) line

990 feet from (E) (W) line

Principal Contractor

Abercrombie Drilling, Inc.

Geologist

Harold Steincamp

Spud Date

June 9, 1973

Total Depth

4650'

P.B.T.D.

Date Completed

June 29, 1973

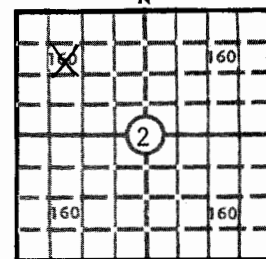
Oil Purchaser

S. 2 T. 11 R. 31 W

Loc. SE NW NW

County Gove

640 Acres
N



Locate well correctly
2972

Elev.: Gr.

DF 2978 KB 2980

CASING RECORD

Report of all strings set — surface, intermediate, production, etc.

Purpose of string	Size hole drilled	Size casing set (in O.D.)	Weight lbs/ft.	Setting depth	Type cement	Sacks	Type and percent additives
Surface Casing	12 1/2"	8-5/8"	28#	251'	Common	175	---
Production Csg.	7-7/8"	5 1/2"	15 1/2#	4646'	Posmix 50/50 Common	25 25	6% gel, 8# gil. 10% salt

LINER RECORD

PERFORATION RECORD

Top, ft.	Bottom, ft.	Sacks cement	Shots per ft.	Size & type	Depth interval

TUBING RECORD

Size	Setting depth	Packer set at			

ACID, FRACTURE, SHOT, CEMENT SQUEEZE RECORD

Amount and kind of material used	Depth interval treated

INITIAL PRODUCTION

Date of first production 1-15-74		Producing method (flowing, pumping, gas lift, etc.) Pumping			
RATE OF PRODUCTION PER 24 HOURS	Oil 101 bbls.	Gas MCF	Water 0 bbls.	Gas-oil ratio CFPB	
Disposition of gas (vented, used on lease or sold)			Producing interval(s) 4208-30 L.-K.C.		

INSTRUCTIONS: As provided in KCC Rule 82-2-125, within 90 days after completion of a well, one completed copy of this Drillers Log shall be transmitted to the State Geological Survey of Kansas, 4150 Monroe Street, Wichita, Kansas 67209. Copies of this form are available from the Conservation Division, State Corporation Commission, 3830 So. Meridian (P.O. Box 17027), Wichita, Kansas 66217. Phone AC 316-522-2206. If confidential custody is desired, please note Rule 82-2-125. Drillers Logs will be on open file in the Oil and Gas Division, State Geological Survey of Kansas, Lawrence, Kansas 66044.

Operator Abercrombie Drilling, Inc.		DESIGNATE TYPE OF COMP.: OIL, GAS, DRY HOLE, SWDW, ETC.:
Well No. 1	Lease Name Bloom "B"	Oilwell
S <u>2</u> T <u>11</u> S <u>R 31</u> ^X _W		

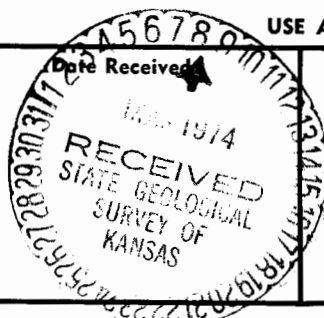
WELL LOG

Show all important zones of porosity and contents thereof; cored intervals, and all drill-stem tests, including depth interval tested, cushion used, time tool open, flowing and shut-in pressures, and recoveries.

SHOW GEOLOGICAL MARKERS, LOGS RUN, OR OTHER DESCRIPTIVE INFORMATION.

FORMATION DESCRIPTION, CONTENTS, ETC.	TOP	BOTTOM	NAME	DEPTH
Surface Clay & Sand	0	261	Anhydrite	2531
Shale	261	1896	Heebner	3990
Sand	1896	1940	Lansing	4028
Shale	1940	2220	B/K.C.	4300
Sand	2220	2300	Pawnee	4424
Shale & Red Bed	2300	2523	Fort Scott	4492
Anhydrite	2523	2580	Cherokee	4518
Shale	2580	2680	Sand	4582
Lime & Shale	2680	4640	Mississippi	4592
Rotary T.D.		4640	T.D.	4650 (E.L.)
<p>DST #1 (4064-80) 15"-30"-30"-30". Rec. 5' mud. FP's 30-45#, BHP's 722-978#.</p> <p>DST #2 (4090-4110) 15"-30"-30"-30". Rec. 5' mud. FP's 30-45#, BHP's 1357-1327#.</p> <p>DST #3 (4145-4210) 15"-45"-60"-45". Rec. 500' GIP, 85' OCM. FP's 60-105#, BHP's 1327-1281#.</p> <p>DST #4 (4212-40) 15"-45"-60"-45". GTS 30". Rec. 2025' gassy muddy oil. FP's 109-722#, BHP's 1281-1206#.</p> <p>DST #5 (4235-70) 15"-45"-30"-30". Rec. 10' mud w/oil spots. FP's 21-21#, BHP's 1008-63#.</p> <p>DST #6 (4435-75) 15"-45"-90"-45". Rec. 152' OCM. FP's 21-95#, BHP's 1196-1112#.</p> <p>DST #7 (4558-82) 15"-45"-60"-45". Rec. 1984' GIP, 120' clean oil, 230' muddy oil (43°). FP's 21-127#, BHP's 1071-1008#.</p>				

USE ADDITIONAL SHEETS, IF NECESSARY, TO COMPLETE WELL RECORD.



Jack K. Wharton
 Jack K. Wharton Signature
 Geologist

Title

February 22, 1974

Date

50766