

13P. 11-32W

CENTRAL WIRELINE SERVICE

P.O. BOX 1547 Great Bend, Kansas 316-793-5762

TEMPERATURE SURVEY

Date June 25, 1985

TKT #2047

Company L. D. Drilling, Inc.

Address Rt. 1 183-B City Great Bend State Kansas

Contractor Hembre Well Service Place Oakley- Mitten Trk. Stop, 2s 1/2w n/loc

Lease Brungardt Well No #1 County Logan Sec 13 Twp 11 Range 32W

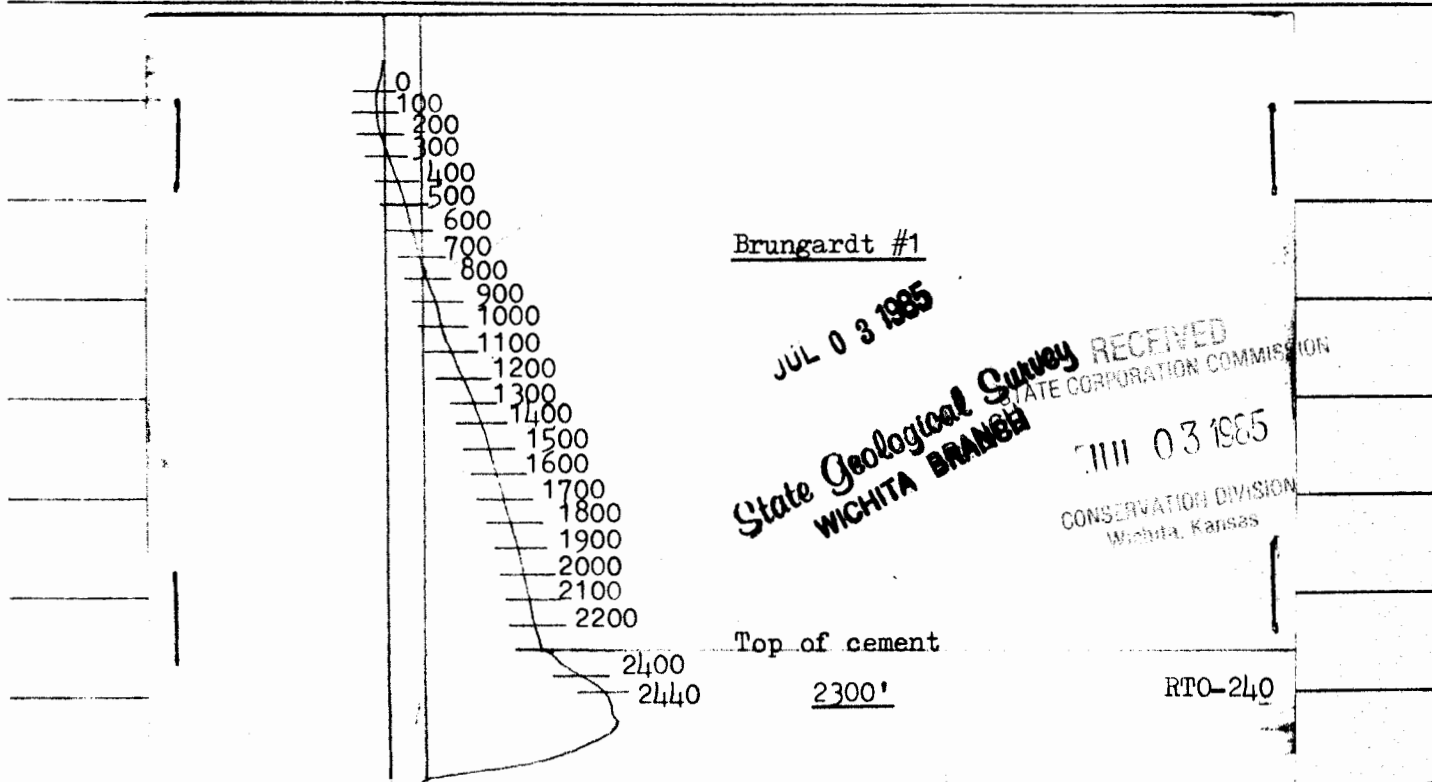
Depth Well _____ Depth Casing _____ Shoe Jt _____ Size 4 1/2 Weight perf- 2500 Hole Size 7 7/8

Amount Cement 550sx halcolite 10#gil per 125sxpoz c.c. Cementing Co. Halliburton Services

Survey from GL To 2440'

Details Started detailing at GL. Found top of cement at 2300'. Tagged the plug at 2440'.

Ran temperature survey 100' every 60 seconds. Zeroed tool at GL.



CENTRAL WIRELINE SERVICE

Pi 13-11-32w

P.O. BOX 1547 Great Bend, Kansas 316-793-5762

TEMPERATURE SURVEY

Date June 26, 1985

TKT #2048

Company L. D. Drilling, Inc.

Address Rt. 1 City Great Bend State Kansas

Contractor Hembre Well Service Place Oakley- 2s 1/2w n/loc

Lease Brungardt Well No #1 County Logan Sec _____ Twp _____ Range _____

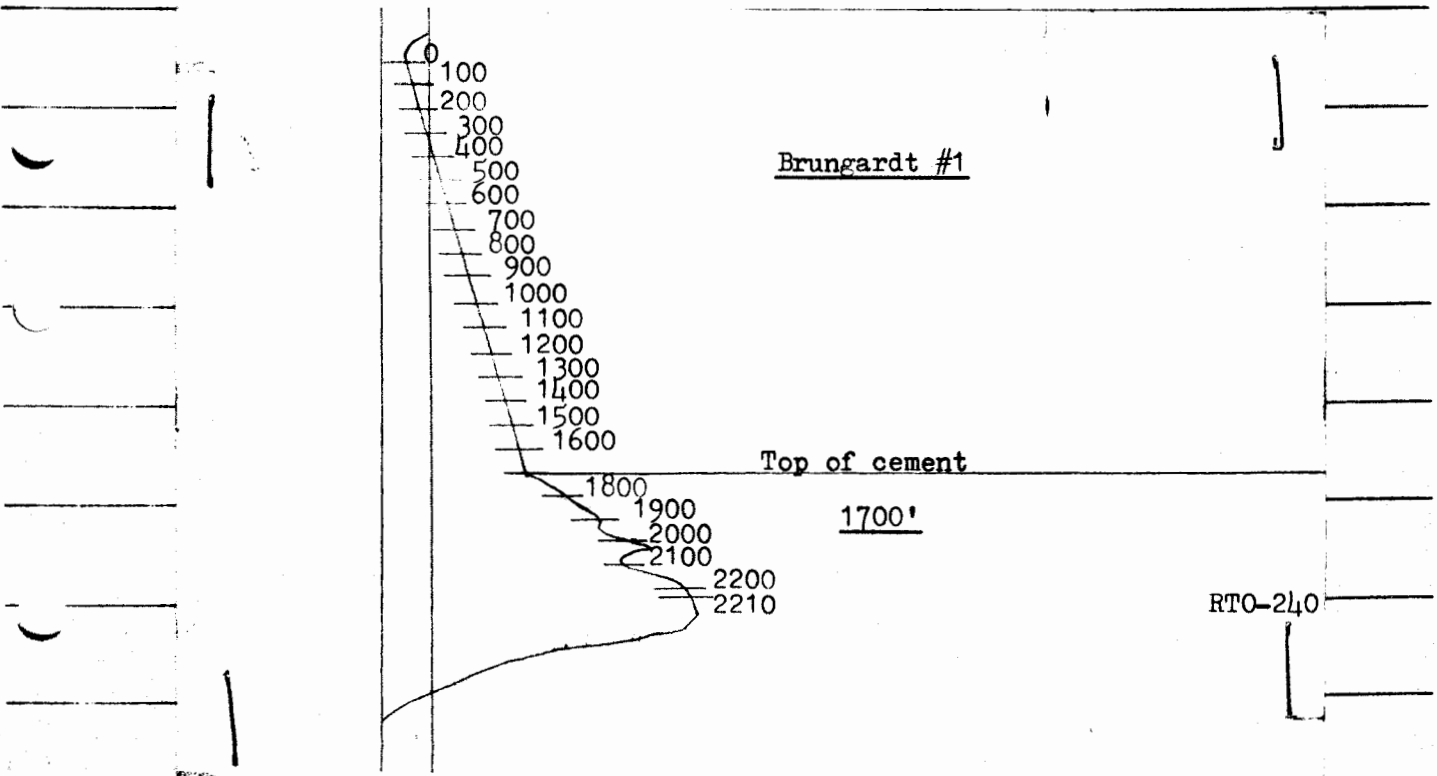
Depth Well _____ Depth Casing _____ Shoe Jt _____ Size 4 1/2 Weight perf-2250 Hole Size 7 7/8

Cement 705sx halcolite 10#gil 125sx50/50oz 3% c.c. Cementing Co. Halliburton Services

Survey from GL To 2210'

De Started detailing at GL. Found top of cement at 1700'. Tagged the plug at 2210'.

Ran temperature survey 100' every 60 seconds. Zeroed tool at GL.



CENTRAL WIRELINE SERVICE

13-11-32w
Pi

P.O. BOX 1547 Great Bend, Kansas 316-793-5762

TEMPERATURE SURVEY

Date June 27, 1985

TKT #2050

Company L. D. Drilling, Inc.

Address Rt. 1 City Great Bend State Kansas

Contractor Hembre Well Service Place Oakley- 2s 1/2w n/loc

Lease Brungardt Well No #1 County Logan Sec _____ Twp _____ Range _____

Depth Well _____ Depth Casing _____ Shoe Jt perf-1650 Size 4 1/2 Weight down Backside Hole Size 7 7/8
cemented.

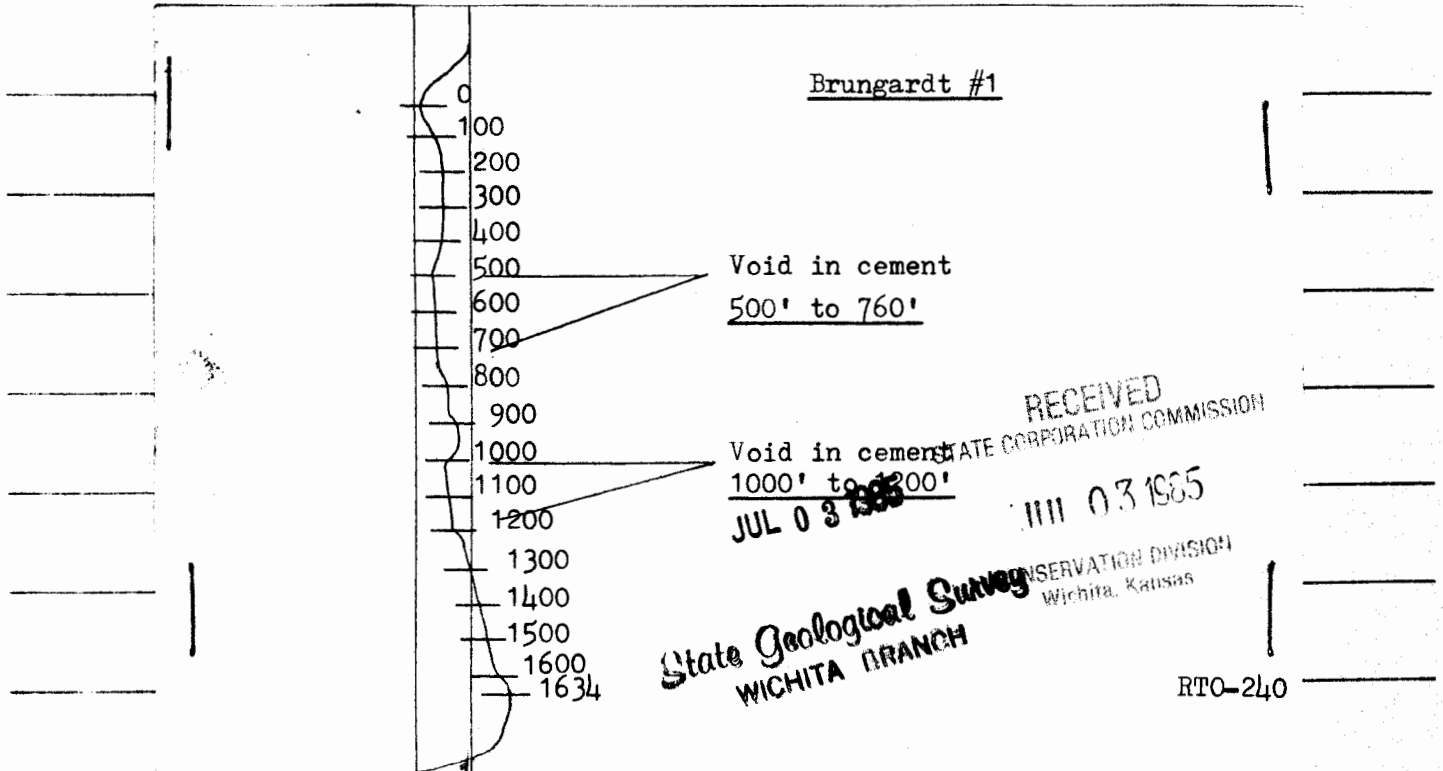
Amount Cement 235sxhalcolite5#gil 225sx 125sx50/50 3% c.c. Cementing Co. Halliburton Services

Survey from GL To 1634'

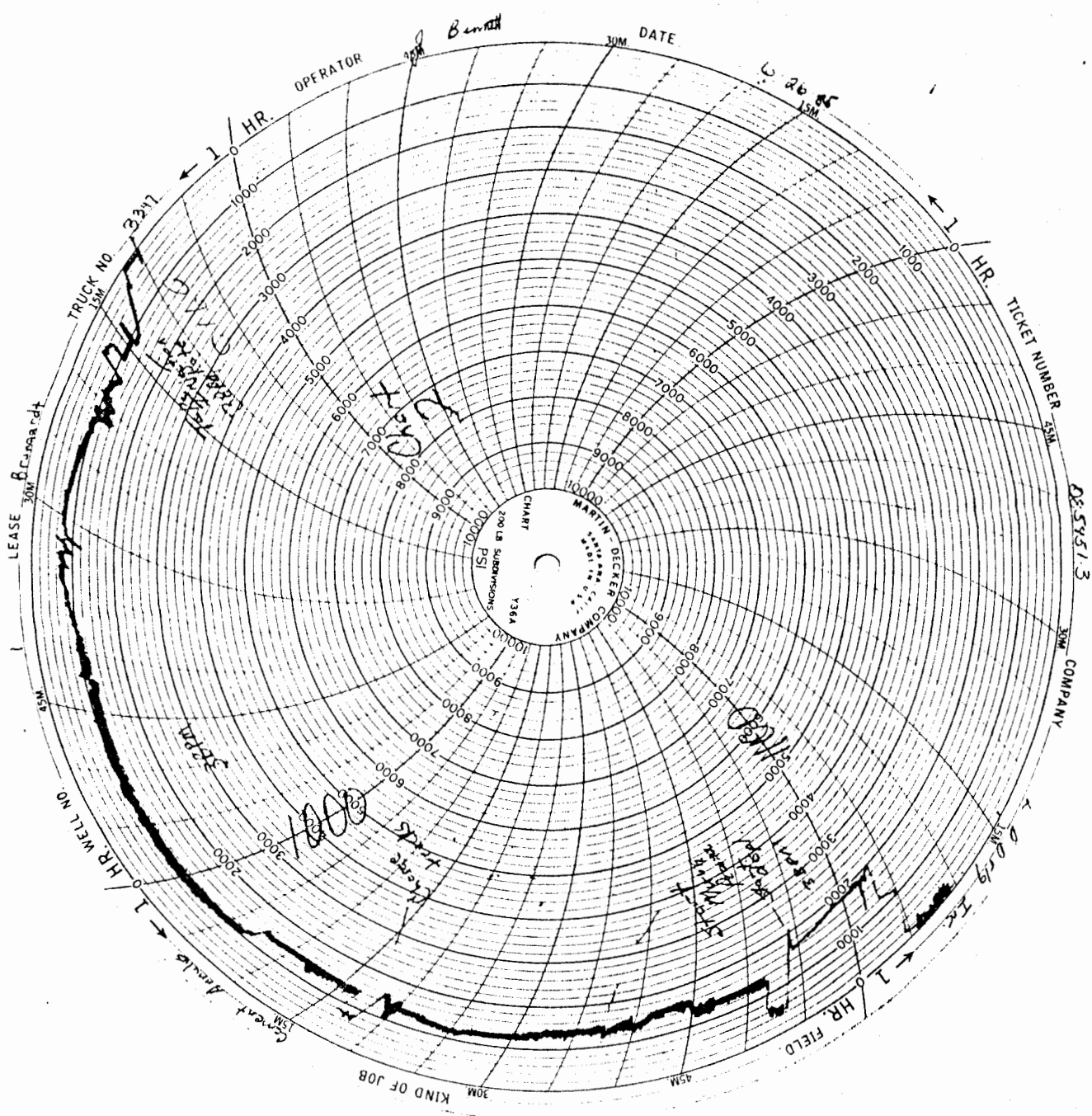
Details Started detailing at GL. Found void in cement from 500' to 760'. Found void in cement

from 1000' to 1200'. Tagged the plug at 1634'. Ran survey 100' every 90 seconds.

Zeroed tool at GL.



Pi 13-11-32w
i Brungardt

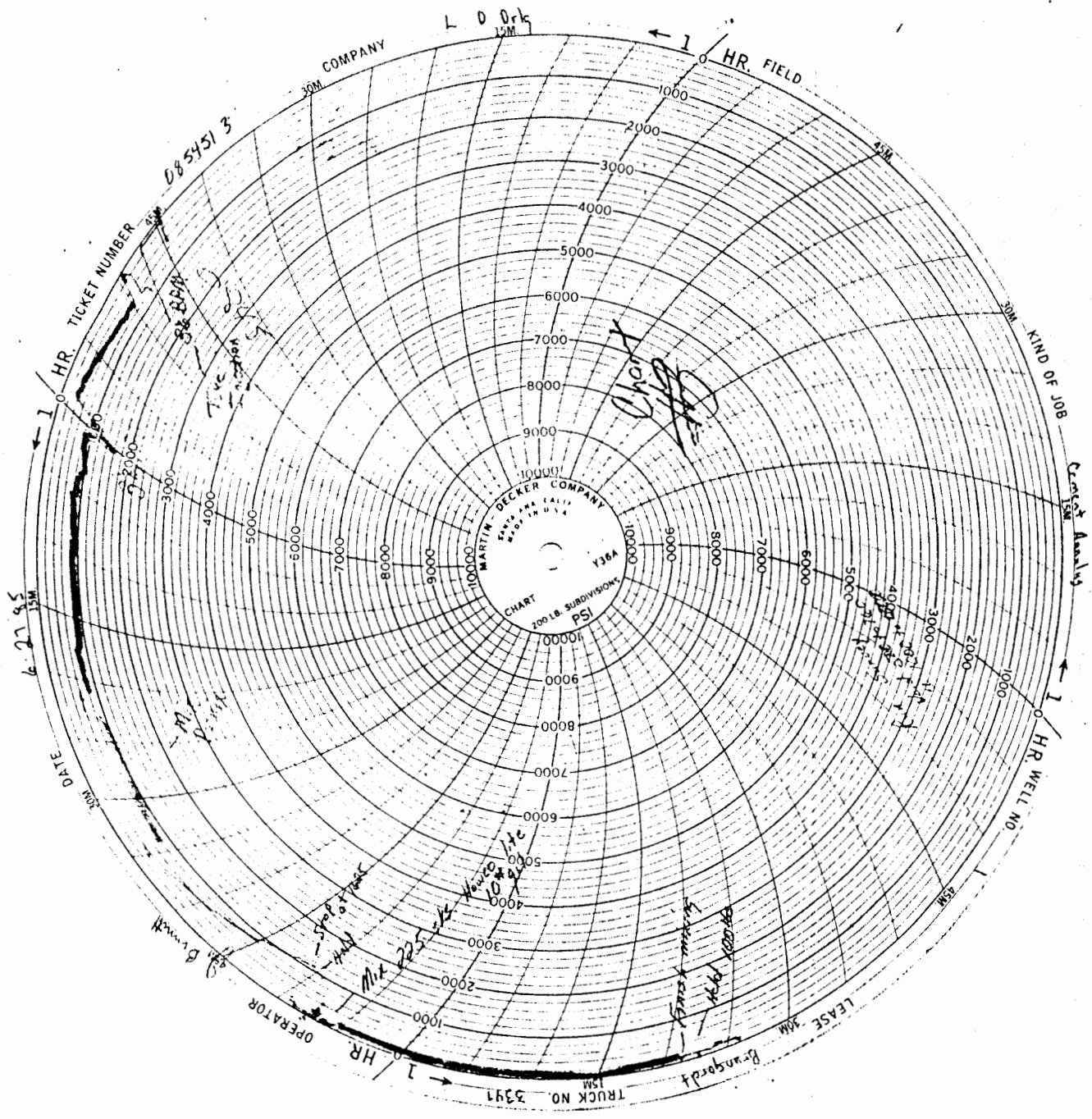


RECEIVED
STATE CORPORATION COMMISSION

MAR 03 1985

CONSERVATION DIVISION
MONTANA, KANSAS

Pi 13-11-32w
1 Brungardt



JUL 0 3 1995

STATE GEOLOGICAL COMMISSION

III 03 1995

State Geological Survey
WICHITA, KANSAS

CONSERVATION DIVISION
WICHITA, KANSAS