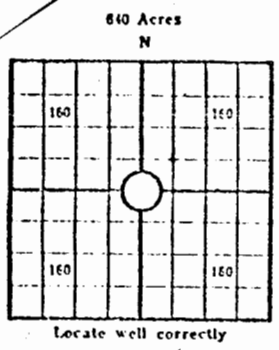


24-11-32W

API # 15-109-20,022



Lease Name: Harrison "B" Well No. 2
Well Located: C NE NE
Logan SEC 24 TWP 11S RGE 32W
Operator: Pickrell Drilling Company
Address: 705 Fourth National Bank Bldg., Wichita, Kansas
Elevation: Ground 2950 D.F. 2952 K.B. 2955
Type Well: (Oil, gas, dry hole) Dry Hole
To Be Completed as SWDW

Drilling Commenced: 1/29 1973 Drilling Completed: 2/7/ 1973
Well Completed: 19 Total Depth 4274'
Initial Production: _____

Casing Record

Size: 8-5/8" Set at 257 Size: _____ Set at _____
Size: 5-1/2" Set at 2474 Size: _____ Set at _____

Liner Record

Size: _____ Set from _____ To _____

Cementing

Casing Size	Sacks	Type Cement and Additives
<u>8-5/8"</u>	<u>160</u>	<u>3/2</u>
<u>5-1/2"</u>	<u>400</u>	<u>common 12% gel & 5% salt</u>
_____	_____	_____

Perforations

Formation	Perforated Interval and Number Shots
<u>Cedar Hills Sand</u>	<u>2208-2232'</u>
_____	_____
_____	_____
_____	_____

Electric Log Run (Show type log and depths covered)

No Log Run

(Fill in formation and related information on reverse side)

24-11-32w

FORMATION, TESTING AND COMPLETION RECORD

Show Drill Stem Tests,
Well Stimulation and
Production Tests

Formation Top Bottom

Sand	0	70
Sandy Clay	70	140
Shale	140	1965
Red Beds - Shale	1965	2340
Shale	2340	2460
Anhydrite	2460	2500
Shale & Lime	2500	2780
Shale - Lime Stringers	2780	2980
Lime	2980	3510
Sh & Sandy Lime	3510	3615
Shale - Lime	3615	3875
Lime & Shale	3875	3940
Lime	3940	4045
Lime & Shale	4045	4080
Lir	4080	4135
Lime & Shale	4135	4178
Lime, RTD	4178	4274

DST 4045-4080: Open 15 mins., SI 30 mins., open
30 mins., SHI 30 mins., weak blow 15 mins.
Rec. 60' slightly oil cut mud. IBHP 1296, FBHP 1264,
IFP 42-42, FFP 52-52.
DST No. 2 4239-4274: Open 15 mins., SI 30 mins.,
open 30 mins., SI 30 mins., weak blow 15 mins.,
rec. 5' mud. IBHP 32, FBHP 32, IFP 32-32, FFP 32-32.



ROTARY DRILLING LOG

24-11-32W
C NE NE

API # 15-109-20, 020 022

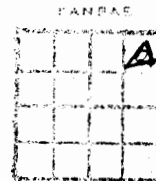
COMPANY: ~~APD 28 1973~~ Pickrell Drilling Company
705 Fourth National Bank Building
Wichita, Kansas 67202

Rotary Drilling Commenced 1/29/73

Rotary Drilling Completed 2/7/73

LOCATION: Harrison "B" No. 2, C NE NE Section 24-11S-32W,
Logan County, Kansas

CONTRACTOR: **PICKRELL DRILLING COMPANY**
Wichita, Kansas



CASING RECORD: Run 6 Jts. 8-5/8" surface casing set @ 257' KB. Cemented
w/160 sacks. Completed 2:15 P.M. Circulated.

Ran 103 Jts. 5-1/2" Casing set @ 2474' KB. Cemented w/400
sacks common 12% gel & 5% salt. Plug down at 3:30 A.M.
To be completed as SWDW.

LOG

(Figures indicate bottom of formation — measurements from top of rotary bushing.)

70	Sand
140	Sandy Clay
1965	Shale
2340	Red Beds - Shale
2460	Shale
2500	Anhydrite
2780	Shale & Lime
2980	Shale - Lime Stringers
3510	Lime
3615	Shale & Sandy Lime
3875	Shale & Lime
3940	Lime & Shale
4045	Lime
4080	Lime & Shale
4135	Lime
4178	Lime & Shale
4274	Lime, RTD

C.F.S.	
3970	4182
3980	4195
4045	4225
4065	4240
4080	4274
4110	
4150	

Slope Tests
2000
2500
3000
3500
4000

Smp Tops	Depth
Cedar Hills not Reported	
Sc	2460
Top	3727
Heeb	3944
Tor	3963
Lans	3986
Kc	4139
Stark	4205
Rtd	4274



The undersigned, C. W. Sebits, Attorney-in-Fact for PICKRELL DRILLING COMPANY,
by certifies in behalf of said Company, that the above is a true and correct log of the formation encountered in drilling
above well as reflected by the Daily Drilling Reports.