



**TRILOBITE
TESTING, INC**

DRILL STEM TEST REPORT

New Gulf Operating
6310 E. 102nd St.
Tulsa, Ok 74137
ATTN: Curtis Covey

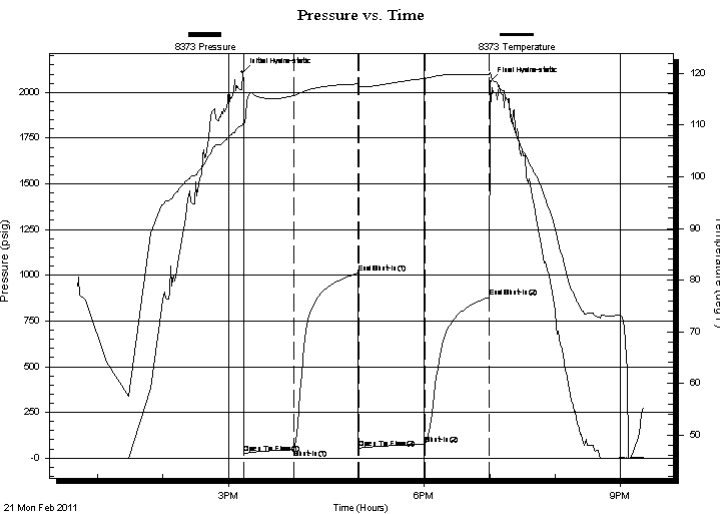
Laura #1
31-11-32 Logan, KS
Job Ticket: 040525 **DST#: 1**
Test Start: 2011.02.21 @ 12:41:40

GENERAL INFORMATION:

Formation: **Lansing**
Deviated: No Whipstock: ft (KB)
Time Tool Opened: 15:14:35
Time Test Ended: 21:22:35
Interval: **4150.00 ft (KB) To 4174.00 ft (KB) (TVD)**
Total Depth: 4174.00 ft (KB) (TVD)
Hole Diameter: 7.88 inches Hole Condition: Good
Test Type: Conventional Bottom Hole
Tester: Brandon Turley
Unit No: 35
Reference Elevations: 3098.00 ft (KB)
3088.00 ft (CF)
KB to GR/CF: 10.00 ft

Serial #: 8373 Inside
Press @ Run Depth: 77.78 psig @ 4151.00 ft (KB) Capacity: 8000.00 psig
Start Date: 2011.02.21 End Date: 2011.02.21 Last Calib.: 2011.02.21
Start Time: 12:41:40 End Time: 21:22:35 Time On Btm: 2011.02.21 @ 15:13:05
Time Off Btm: 2011.02.21 @ 19:00:19

TEST COMMENT: IF: 1/2 blow built to 6 1/2 in 45.
IS: No return.
FF: Surface blow built to 3 1/2 in 60 min.
FS: No return.



PRESSURE SUMMARY

Time (Min.)	Pressure (psig)	Temp (deg F)	Annotation
0	2109.32	110.02	Initial Hydro-static
2	26.89	110.03	Open To Flow (1)
47	47.36	115.73	Shut-In(1)
106	1011.02	117.98	End Shut-In(1)
107	55.46	117.41	Open To Flow (2)
167	77.78	119.05	Shut-In(2)
227	879.88	119.84	End Shut-In(2)
228	2056.94	120.22	Final Hydro-static

Recovery

Length (ft)	Description	Volume (bbl)
62.00	mcw 70%w 30%m	0.87
42.00	mcw 60%w 40%m	0.59
30.00	oil 100%o	0.42

Gas Rates

Choke (inches)	Pressure (psig)	Gas Rate (Mcf/d)



**TRILOBITE
TESTING, INC**

DRILL STEM TEST REPORT

FLUID SUMMARY

New Gulf Operating
6310 E. 102nd St.
Tulsa, Ok 74137
ATTN: Curtis Covey

Laura #1
31-11-32 Logan, KS
Job Ticket: 040525 **DST#: 1**
Test Start: 2011.02.21 @ 12:41:40

Mud and Cushion Information

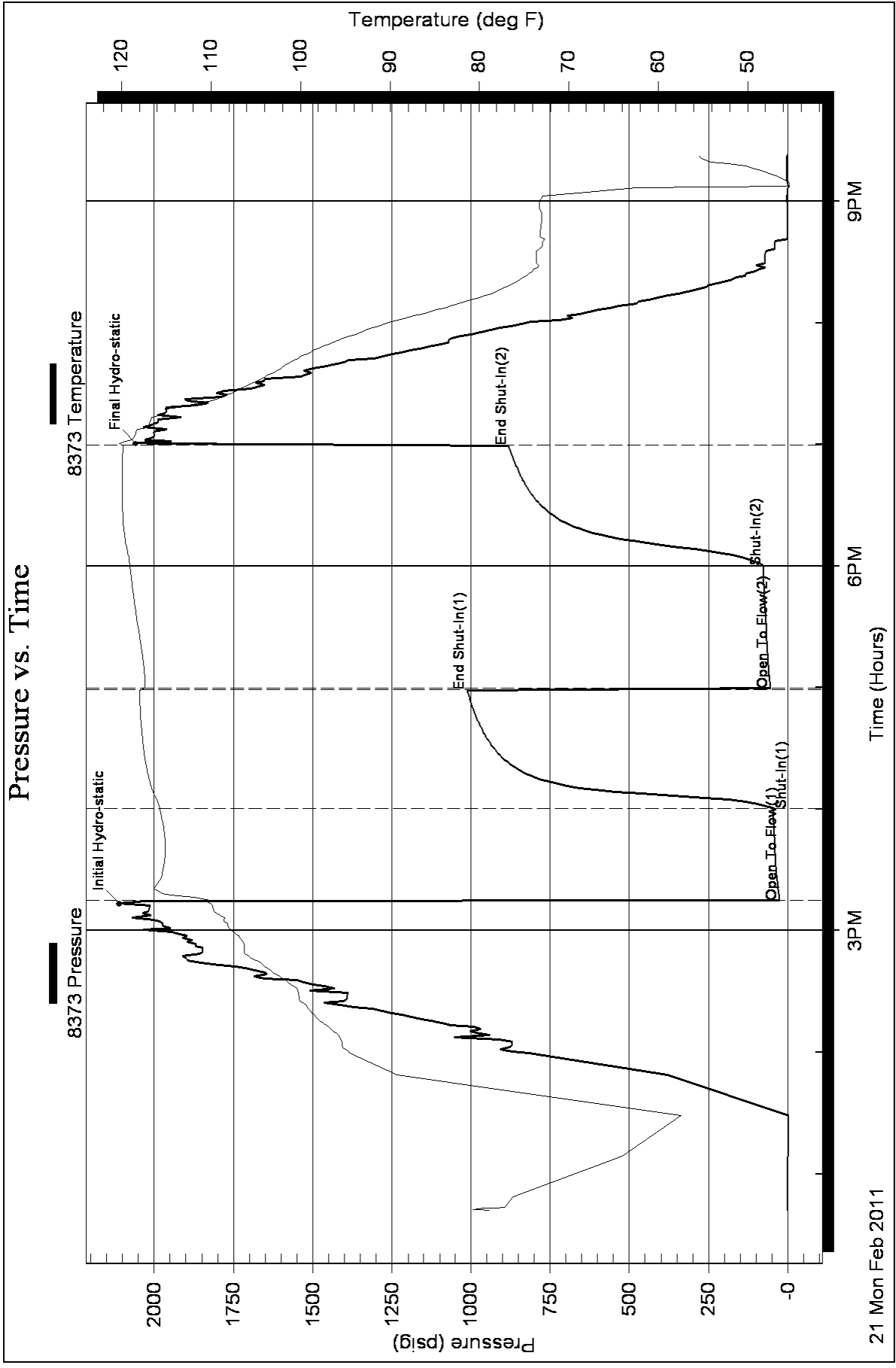
Mud Type: Gel Chem	Cushion Type:	Oil API: 32 deg API
Mud Weight: 9.00 lb/gal	Cushion Length: ft	Water Salinity: 34000 ppm
Viscosity: 55.00 sec/qt	Cushion Volume: bbl	
Water Loss: 7.60 in ³	Gas Cushion Type:	
Resistivity: 0.00 ohm.m	Gas Cushion Pressure: psig	
Salinity: 2000.00 ppm		
Filter Cake: 1.00 inches		

Recovery Information

Recovery Table

Length ft	Description	Volume bbl
62.00	mcw 70%w 30%m	0.870
42.00	mcw 60%w 40%m	0.589
30.00	oil 100%o	0.421

Total Length: 134.00 ft Total Volume: 1.880 bbl
 Num Fluid Samples: 0 Num Gas Bombs: 0 Serial #:
 Laboratory Name: Laboratory Location:
 Recovery Comments: 29@30=32 API
 .23@64=34000ppm





**TRILOBITE
TESTING, INC**

DRILL STEM TEST REPORT

New Gulf Operating
6310 E. 102nd St.
Tulsa, Ok 74137
ATTN: Curtis Covey

Laura #1
31-11-32 Logan, KS
Job Ticket: 042051 **DST#: 2**
Test Start: 2011.02.22 @ 16:31:57

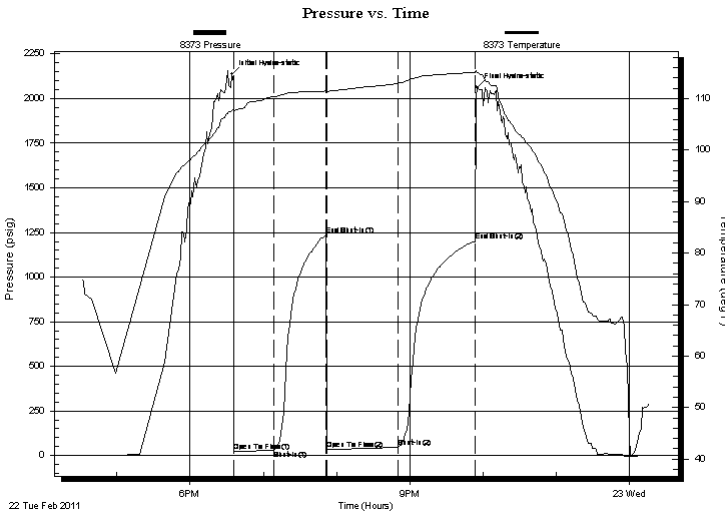
GENERAL INFORMATION:

Formation: **Lansing**
Deviated: No Whipstock: ft (KB)
Time Tool Opened: 18:35:52
Time Test Ended: 00:16:51
Interval: **4300.00 ft (KB) To 4323.00 ft (KB) (TVD)**
Total Depth: 4323.00 ft (KB) (TVD)
Hole Diameter: 7.88 inches Hole Condition: Good
Test Type: Conventional Bottom Hole
Tester: Brandon Turley
Unit No: 35
Reference Elevations: 3098.00 ft (KB)
3088.00 ft (CF)
KB to GR/CF: 10.00 ft

Serial #: 8373 **Inside**
Press @ Run Depth: 45.55 psig @ 4301.00 ft (KB) Capacity: 8000.00 psig
Start Date: 2011.02.22 End Date: 2011.02.23 Last Calib.: 2011.02.23
Start Time: 16:31:57 End Time: 00:16:51 Time On Btm: 2011.02.22 @ 18:34:22
Time Off Btm: 2011.02.22 @ 21:54:36

TEST COMMENT: IF: 1/4 blow built to 3 in 60 min.
IS: No return.
FF: Surface blow built to 2 in 60 min.
FS: No return.

PRESSURE SUMMARY



Time (Min.)	Pressure (psig)	Temp (deg F)	Annotation
0	2135.63	107.72	Initial Hydro-static
2	21.77	107.53	Open To Flow (1)
34	30.39	110.30	Shut-In(1)
77	1235.61	111.46	End Shut-In(1)
78	32.68	111.23	Open To Flow (2)
137	45.55	113.00	Shut-In(2)
199	1201.65	115.11	End Shut-In(2)
201	2062.85	115.40	Final Hydro-static

Recovery

Length (ft)	Description	Volume (bbl)
52.00	ocm 10%o 90%o	0.73
15.00	oil 100%o	0.21

Gas Rates

Choke (inches)	Pressure (psig)	Gas Rate (Mcf/d)



**TRILOBITE
TESTING, INC**

DRILL STEM TEST REPORT

FLUID SUMMARY

New Gulf Operating

Laura #1

6310 E. 102nd St.
Tulsa, Ok 74137

31-11-32 Logan, KS

Job Ticket: 042051

DST#: 2

ATTN: Curtis Covey

Test Start: 2011.02.22 @ 16:31:57

Mud and Cushion Information

Mud Type: Gel Chem

Cushion Type:

Oil API:

35 deg API

Mud Weight: 9.00 lb/gal

Cushion Length:

ft

Water Salinity:

0 ppm

Viscosity: 52.00 sec/qt

Cushion Volume:

dbl

Water Loss: 8.78 in³

Gas Cushion Type:

Resistivity: 0.00 ohm.m

Gas Cushion Pressure:

psig

Salinity: 3000.00 ppm

Filter Cake: 1.00 inches

Recovery Information

Recovery Table

Length ft	Description	Volume dbl
52.00	ocm 10%o 90%m	0.729
15.00	oil 100%o	0.210

Total Length: 67.00 ft Total Volume: 0.939 dbl

Num Fluid Samples: 0

Num Gas Bombs: 0

Serial #:

Laboratory Name:

Laboratory Location:

Recovery Comments: 32@30=35

Pressure vs. Time

