

## DRILL-STEM TEST DATA

<b>Well Name:</b>	HUBERT A-1			
<b>Company :</b>	AFG ENERGY CO			
<b>Location - Sec:</b>	30	<b>Twp:</b>	11S	<b>Rge:</b> 33W
<b>County:</b>	LOGAN	<b>State:</b>	KS	
<b>Date:</b>	08/02/95			

TRILOBITE TESTING L.L.C.

OPERATOR : AFG ENERGY CO  
 WELL NAME: HUBERT A #1  
 LOCATION : 30-11S-33W  
 INTERVAL : 4060.00 To 4130.00 ft

DATE 7/30/95  
 KB 3158.00 ft  
 GR 3150.00 ft  
 TD 4130.00 ft

TICKET NO: 8010  
 FORMATION: TORONTO A-B-C  
 DST #1  
 TEST TYPE: CONVENTIONAL

RECORDER DATA

Mins		Field	1	2	3	4	TIME DATA-----		
PF	0 Rec.	11057	11057				PF Fr.	to	hr
SI	0 Range(Psi )	4500.0	4500.0	0.0	0.0	0.0	IS Fr.	to	hr
SF	0 Clock(hrs)	7452	7452				SF Fr.	to	hr
FS	0 Depth(ft )	4065.0	4065.0	0.0	0.0	0.0	FS Fr.	to	hr

	Field	1	2	3	4			
A. Init Hydro	0.0	0.0	0.0	0.0	0.0	T STARTED		hr
B. First Flow	0.0	0.0	0.0	0.0	0.0	T ON BOTM		hr
Bl. Final Flow	0.0	0.0	0.0	0.0	0.0	T OPEN	2112	hr
C. In Shut-in	0.0	0.0	0.0	0.0	0.0	T PULLED		hr
D. Init Flow	0.0	0.0	0.0	0.0	0.0	T OUT		hr
E. Final Flow	0.0	0.0	0.0	0.0	0.0			
F. Fl Shut-in	0.0	0.0	0.0	0.0	0.0	TOOL DATA-----		
G. Final Hydro	0.0	0.0	0.0	0.0	0.0	Tool Wt.		0.00 lbs
Inside/Outside	I	I				Wt Set On Packer		0.00 lbs
						Wt Pulled Loose		0.00 lbs
						Initial Str Wt		0.00 lbs
						Unseated Str Wt		0.00 lbs
						Bot Choke		0.00 in
						Hole Size		0.00 in
						D Col. ID		2.25 in
						D. Pipe ID		0.00 in
						D.C. Length		31.00 ft
						D.P. Length		0.00 ft

RECOVERY

Tot Fluid	150.00 ft of	0.00 ft in DC and	0.00 ft in DP					
150.00	ft of DRILLING MUD							
0.00	ft of							
0.00	ft of							
0.00	ft of							
0.00	ft of							
0.00	ft of							
0.00	ft of							
0.00	ft of							
SALINITY	0.00 P.P.M.	A.P.I. Gravity	0.00					

BLOW DESCRIPTION

IF: PACKER FAILURE - PULLED TOOL  
 CHANGED ANCHOR

MUD DATA-----

Mud Type	CHEMICAL
Weight	9.20 lb/cf
Vis.	52.00 S/L
W.L.	10.80 in <sup>3</sup>
F.C.	0.00 in
Mud Drop	
Amt. of fill	0.00 ft
Btm. H. Temp.	115.00 F
Hole Condition	
% Porosity	0.00
Packer Size	6.75 in
No. of Packers	2
Cushion Amt.	0.00
Cushion Type	
Reversed Out	
Tool Chased	
Tester	SHANE MCBRIDE
Co. Rep.	ED GLASSMAN
Contr.	DISCOVERY
Rig #	
Unit #	
Pump T.	

SAMPLES:  
 SENT TO:

Test Successful: N

TRILOBITE TESTING L.L.C.

OPERATOR : AFG ENERGY CO  
 WELL NAME: HUBERT A #1  
 LOCATION : 30-11S-33W  
 INTERVAL : 4025.00 To 4130.00 ft

DATE 7/31/95

KB 3158.00 ft TICKET NO: 8011 DST #2  
 GR 3150.00 ft FORMATION: TORONTO A-B-C  
 TD 4130.00 ft TEST TYPE: CONVENTIONAL

RECORDER DATA

Mins	Field	1	2	3	4	TIME DATA-----
PF 30 Rec.	11057	11057				PF Fr. to 30 hr
SI 45 Range(Psi )	4500.0	4500.0	0.0	0.0	0.0	IS Fr. to 45 hr
SF 30 Clock(hrs)	7452	7452				SF Fr. to 30 hr
FS 30 Depth(ft )	4030.0	4030.0	0.0	0.0	0.0	FS Fr. to 30 hr

	Field	1	2	3	4	
A. Init Hydro	1948.0	1983.0	0.0	0.0	0.0	T STARTED hr
B. First Flow	168.0	176.0	0.0	0.0	0.0	T ON BOTM 0045 hr
B1. Final Flow	510.0	513.0	0.0	0.0	0.0	T OPEN 0049 hr
C. In Shut-in	1219.0	1230.0	0.0	0.0	0.0	T PULLED 0404 hr
D. Init Flow	604.0	611.0	0.0	0.0	0.0	T OUT hr
E. Final Flow	805.0	822.0	0.0	0.0	0.0	
F. Fl Shut-in	1208.0	1216.0	0.0	0.0	0.0	
G. Final Hydro	1914.0	1950.0	0.0	0.0	0.0	
Inside/Outside	I	I				

TOOL DATA-----

Tool Wt.	0.00 lbs
Wt Set On Packer	0.00 lbs
Wt Pulled Loose	0.00 lbs
Initial Str Wt	0.00 lbs
Unseated Str Wt	0.00 lbs
Bot Choke	0.00 in
Hole Size	0.00 in
D Col. ID	2.25 in
D. Pipe ID	0.00 in
D.C. Length	31.00 ft
D.P. Length	0.00 ft

RECOVERY

Tot Fluid 2155.00 ft of 31.00 ft in DC and 2124.00 ft in DP  
 5.00 ft of FREE OIL  
 183.00 ft of OIL CUT MUDDY WATER 20%OIL/36%WATER/44%MUD  
 805.00 ft of OIL CUT WATERY MUD 10%OIL/56%WATER/34%MUD  
 593.00 ft of OIL CUT MUDDY WATER 9%OIL/67%WATER/24%MUD  
 393.00 ft of SLIGHT OIL CUT WATERY MUD 7%OIL/83%H2O/10%MUD  
 176.00 ft of MUDDY WATER TRACE-OIL/3%OIL/92%WATER/5%MUD  
 0.00 ft of  
 0.00 ft of

SALINITY 70000.00 P.P.M. A.P.I. Gravity 0.00

BLOW DESCRIPTION

IF: BOTTOM OF BUCKET IN 2 1/2 MINUTES  
 ISI: BLEED OFF BLOW - NO RETURN BLOW  
 FF: BOTTOM OF BUCKET IN 5 MINUTES  
 FSI: BLEED OFF BLOW - NO RETURN BLOW

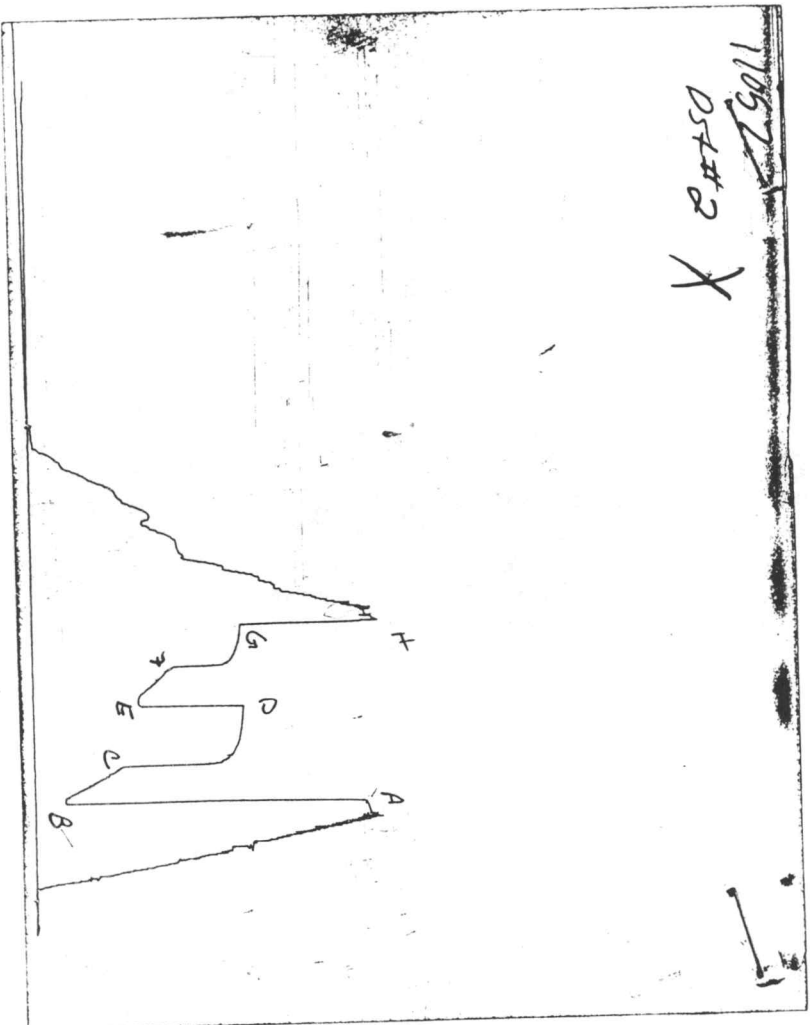
MUD DATA-----

Mud Type	CHEMICAL
Weight	9.20 lb/cf
Vis.	52.00 S/L
W.L.	10.80 in3
F.C.	0.00 in
Mud Drop	
Amt. of fill	0.00 ft
Btm. H. Temp.	0.00 F
Hole Condition	
% Porosity	0.00
Packer Size	6.75 in
No. of Packers	2
Cushion Amt.	0.00
Cushion Type	
Reversed Out	
Tool Chased	
Tester	SHANE MCBRIDE
Co. Rep.	ED GLASSMAN
Contr.	DISCOVERY
Rig #	
Unit #	
Pump T.	

SAMPLES:  
 SENT TO:

Test Successful: Y

CHART PAGE



This is an actual photograph of recorder chart

TRILOBITE TESTING L.L.C.

OPERATOR : AFG ENERGY CO DATE 8/1/95  
 WELL NAME: HUBERT A #1 KB 3158.00 ft TICKET NO: 8012 DST #3  
 LOCATION : 30-11S-33W GR 3150.00 ft FORMATION: J-K  
 INTERVAL : 4280.00 To 4341.00 ft TD 4341.00 ft TEST TYPE: CONVENTIONAL

RECORDER DATA

Mins	Field	1	2	3	4	TIME DATA-----
PF 15 Rec.	11057	11057				PF Fr. to 15 hr
SI 30 Range(Psi )	4500.0	4500.0	0.0	0.0	0.0	IS Fr. to 30 hr
SF 45 Clock(hrs)	7452	7452				SF Fr. to 45 hr
FS 30 Depth(ft )	4281.0	4281.0	0.0	0.0	0.0	FS Fr. to 30 hr

	Field	1	2	3	4	
A. Init Hydro	2106.0	2106.0	0.0	0.0	0.0	T STARTED hr
B. First Flow	56.0	60.0	0.0	0.0	0.0	T ON BOTM 0507 hr
B1. Final Flow	72.0	71.0	0.0	0.0	0.0	T OPEN 0512 hr
C. In Shut-in	1253.0	1265.0	0.0	0.0	0.0	T PULLED 0712 hr
D. Init Flow	112.0	112.0	0.0	0.0	0.0	T OUT hr
E. Final Flow	179.0	179.0	0.0	0.0	0.0	
F. Fl Shut-in	1253.0	1265.0	0.0	0.0	0.0	TOOL DATA-----
G. Final Hydro	2106.0	2106.0	0.0	0.0	0.0	Tool Wt. 0.00 lbs
Inside/Outside	I	I				Wt Set On Packer 0.00 lbs
						Wt Pulled Loose 0.00 lbs
						Initial Str Wt 0.00 lbs
						Unseated Str Wt 0.00 lbs
						Bot Choke 0.00 in
						Hole Size 0.00 in
						D Col. ID 2.25 in
						D. Pipe ID 0.00 in
						D.C. Length 31.00 ft
						D.P. Length 0.00 ft

RECOVERY

Tot Fluid 464.00 ft of 31.00 ft in DC and 433.00 ft in DP  
 23.00 ft of GAS IN PIPE  
 2.00 ft of FREE OIL  
 342.00 ft of OIL CUT WATERY MUD 26%OIL/10%WATER/64%MUD  
 120.00 ft of WATERY MUD - TRACE OIL 5%OIL/50%WATER/45%MUD  
 0.00 ft of  
 0.00 ft of  
 0.00 ft of  
 0.00 ft of

SALINITY 22000.00 P.P.M. A.P.I. Gravity 0.00

BLOW DESCRIPTION

IF: SURFACE BLOW BUILT TO 9"  
 ISI: BLEED OFF BLOW - NO RETURN BLOW  
 FF: BOTTOM OF BUCKET IN 33 MINUTES  
 FSI: BLEED OFF BLOW - NO RETURN BLOW

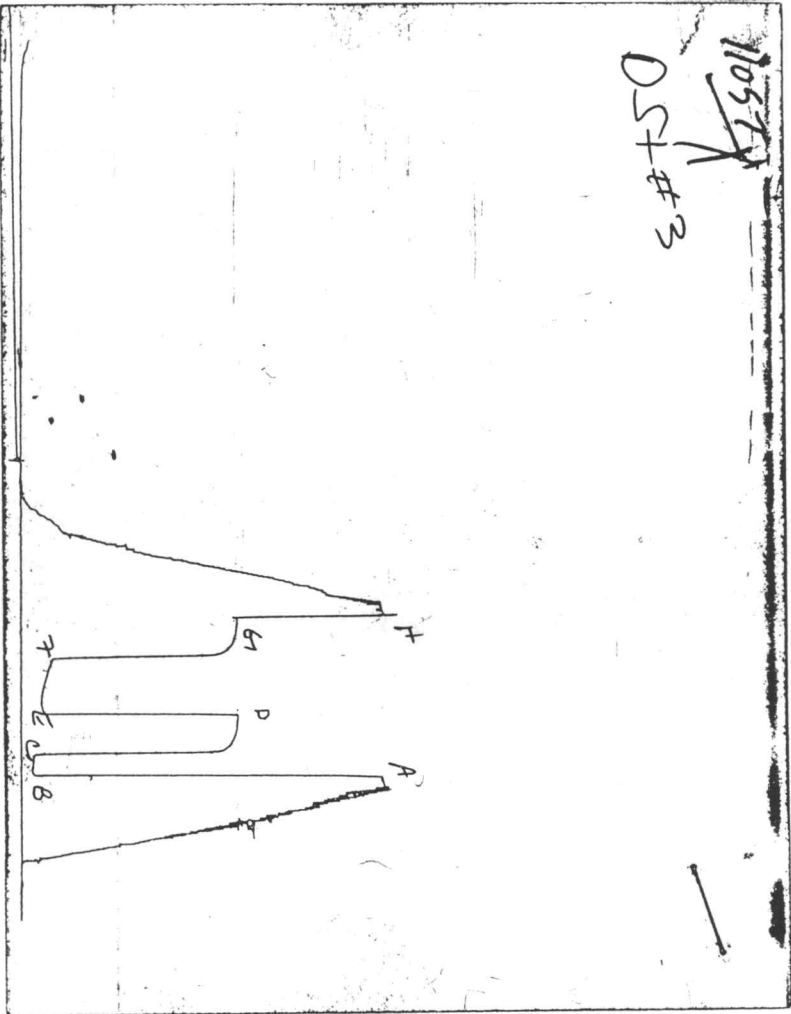
MUD DATA-----

Mud Type	CHEMICAL
Weight	9.40 lb/c
Vis.	47.00 S/L
W.L.	8.40 in3
F.C.	0.00 in
Mud Drop	
Amt. of fill	0.00 ft
Btm. H. Temp.	124.00 F
Hole Condition	
% Porosity	0.00
Packer Size	6.75 in
No. of Packers	2
Cushion Amt.	0.00
Cushion Type	
Reversed Out	
Tool Chased	
Tester	SHANE MCBRIDE
Co. Rep.	ED GLASSMAN
Contr.	DISCOVERY
Rig #	
Unit #	
Pump T.	

SAMPLES:  
 SENT TO:

Test Successful: Y

CHART PAGE



This is an actual photograph of recorder chart

TRILOBITE TESTING L.L.C.

OPERATOR : AFG ENERGY CO

DATE 8/2/95

WELL NAME: HUBERT A-1

KB 3158.00 ft

TICKET NO: 8013

DST #4

LOCATION : 30-11S-33W

GR 3150.00 ft

FORMATION: JOHNSON

INTERVAL : 4612.00 To 4695.00 ft

TD 4695.00 ft

TEST TYPE: CONVENTIONAL

RECORDER DATA

Mins	Field	1	2	3	4	TIME DATA-----
PF 15 Rec.	11057	11057				PF Fr. to 15 hr
SI 30 Range(Psi )	4500.0	4500.0	0.0	0.0	0.0	IS Fr. to 30 hr
SF 45 Clock(hrs)	7452	7452				SF Fr. to 45 hr
FS 30 Depth(ft )	4613.0	4613.0	0.0	0.0	0.0	FS Fr. to 30 hr

	Field	1	2	3	4	
A. Init Hydro	2309.0	2308.0	0.0	0.0	0.0	T STARTED hr
B. First Flow	22.0	31.0	0.0	0.0	0.0	T ON BOTM 2215 hr
Bl. Final Flow	5.0	11.0	0.0	0.0	0.0	T OPEN 2223 hr
C. In Shut-in	772.0	771.0	0.0	0.0	0.0	T PULLED 2423 hr
D. Init Flow	11.0	21.0	0.0	0.0	0.0	T OUT hr
E. Final Flow	5.0	11.0	0.0	0.0	0.0	
F. Fl Shut-in	616.0	619.0	0.0	0.0	0.0	TOOL DATA-----
G. Final Hydro	2287.0	2268.0	0.0	0.0	0.0	Tool Wt. 0.00 lbs
Inside/Outside	I	I				Wt Set On Packer 0.00 lbs
						Wt Pulled Loose 0.00 lbs
						Initial Str Wt 0.00 lbs
						Unseated Str Wt 0.00 lbs
						Bot Choke 0.00 in
						Hole Size 0.00 in
						D Col. ID 2.25 in
						D. Pipe ID 0.00 in
						D.C. Length 31.00 ft
						D.P. Length 0.00 ft

RECOVERY

Tot Fluid 6.00 ft of 6.00 ft in DC and 0.00 ft in DP  
 6.00 ft of DRILLING MUD  
 0.00 ft of  
 0.00 ft of  
 0.00 ft of  
 0.00 ft of  
 0.00 ft of  
 0.00 ft of  
 0.00 ft of

SALINITY 3040.00 P.P.M. A.P.I. Gravity 0.00

MUD DATA-----

Mud Type	CHEMICAL
Weight	9.60 lb/cf
Vis.	48.00 S/L
W.L.	10.00 in3
F.C.	0.00 in
Mud Drop	

BLOW DESCRIPTION

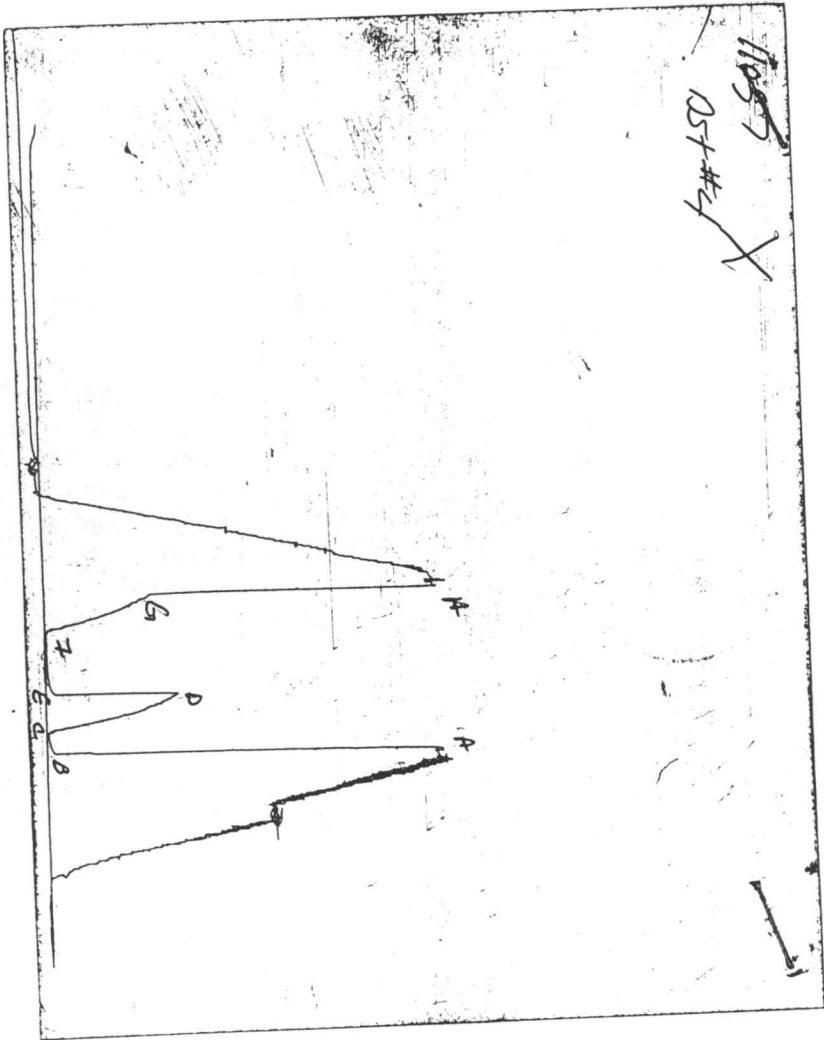
IF: SURFACE BLOW 1/8"  
 BLEW THROUGHOUT  
 ISI: BLEED OFF BLOW - NO RETURN BLOW  
 FF: BUBBLE TO OPEN TOOL - NO BLOW  
 FSI: NO RETURN BLOW

Amt. of fill	0.00 ft
Btm. H. Temp.	124.00 F
Hole Condition	GOOD
% Porosity	0.00
Packer Size	6.75 in
No. of Packers	2
Cushion Amt.	0.00
Cushion Type	
Reversed Out	
Tool Chased	
Tester	SHANE MCBRIDE
Co. Rep.	ED GLASSMAN
Contr.	DISCOVERY
Rig #	
Unit #	
Pump T.	

SAMPLES:  
 SENT TO:

Test Successful: Y

CHART PAGE



This is an actual photograph of recorder chart