

*PF*  
*One*  
**KANSAS**

*State Geological Survey*  
**WICHITA BRANCH**

**WELL COMPLETION REPORT AND  
DRILLER'S LOG**

S. 17 T. 11 R. 33x~~XX~~<sup>XX</sup>W

API No. 15 — 109 — 20,190  
County Number

Loc. SW SW SW  
County Logan

Operator  
George R. Jones

Address  
125 N. Market, Suite 1310, Wichita, KS 67202

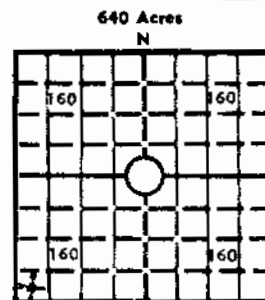
Well No. 1 Lease Name Vogler

Footage Location  
330 feet from X(M) (S) line 330 feet from X(W) (W) line

Principal Contractor Rains & Williamson Oil Co., Inc. Geologist Terry McLeod

Spud Date Oct. 12, 1981 Date Completed Oct. 22, 1981 Total Depth 4830' P.B.T.D.

Directional Deviation Oil and/or Gas Purchaser Dry Hole



Locate well correctly  
Elev.: Gr. 3149'  
DF KB 3158'

**CASING RECORD**

Report of all strings set — surface, intermediate, production, etc.

| Purpose of string | Size hole drilled | Size casing set (in O.D.) | Weight lbs/ft. | Setting depth | Type cement  | Sacks | Type and percent additives |
|-------------------|-------------------|---------------------------|----------------|---------------|--------------|-------|----------------------------|
| surface           | 12-1/4"           | 8-5/8"                    | 20#            | 250'          | 50/50 Posmix | 165   | 2% gel<br>3% C.C.          |
|                   |                   |                           |                |               |              |       |                            |
|                   |                   |                           |                |               |              |       |                            |
|                   |                   |                           |                |               |              |       |                            |

**LINER RECORD**

**PERFORATION RECORD**

| Top, ft. | Bottom, ft. | Sacks cement | Shots per ft. | Size & type | Depth interval |
|----------|-------------|--------------|---------------|-------------|----------------|
|          |             |              |               |             |                |
|          |             |              |               |             |                |

**TUBING RECORD**

| Size | Setting depth | Packer set at |
|------|---------------|---------------|
|      |               |               |

**ACID, FRACTURE, SHOT, CEMENT SQUEEZE RECORD**

| Amount and kind of material used | Depth interval treated |
|----------------------------------|------------------------|
|                                  |                        |
|                                  |                        |
|                                  |                        |

**INITIAL PRODUCTION**

|  |   |     |                       |               |  |
|--|---|-----|-----------------------|---------------|--|
| Date of first production                           | Producing method (flowing, pumping, gas lift, etc.) |     |                       |               |  |
| <b>RATE OF PRODUCTION PER 24 HOURS</b>             | Oil   | Gas | Water                 | Gas-oil ratio |  |
|  | bbls.   | MCF | bbls.                 | CFPB          |  |
| Disposition of gas (vented, used on lease or sold) |   |     | Producing interval(s) |               |  |

INSTRUCTIONS: As provided in KCC Rule 82-2-125, within 90 days after completion of a well, one completed copy of this Drillers Log shall be transmitted to the State Geological Survey of Kansas, 4150 Monroe Street, Wichita, Kansas 67209. Copies of this form are available from the Conservation Division, State Corporation Commission, 245 No. Water, Wichita, Kansas 67202. Phone AC 316-522-2206. If confidential custody is desired, please note Rule 82-2-125. Drillers Logs will be on an open file in the Oil and Gas Division, State Geological Survey of Kansas, Lawrence, Kansas 66044.

|   |                      |   |
|---|----------------------|---|
| Operator<br>George R. Jones               |                      | DESIGNATE TYPE OF COMP.: OIL, GAS,<br>DRY HOLE, SWDW, ETC.:<br>Dry Hole |
| Well No.<br>1                             | Lease Name<br>Vogler |   |
| S 17 T 11 R 33 <sup>XB</sup> <sub>W</sub> |                      |   |


**WELL LOG**

Show all important zones of porosity and contents thereof; cored intervals, and all drill-stem tests, including depth interval tested, cushion used, time tool open, flowing and shut-in pressures, and recoveries.

SHOW GEOLOGICAL MARKERS, LOGS RUN, OR OTHER DESCRIPTIVE INFORMATION.

| FORMATION DESCRIPTION, CONTENTS, ETC.  | TOP | BOTTOM | NAME  | DEPTH   |
|--|-----|--------|---|---|
| DST #1: 4224 - 4270<br>45" 45" 45" 45"<br>strong blow off bottom of bucket in 11"<br>Rec. 780' muddy SW<br>ifp 121 - 264<br>ffp 315 - 376<br>isip 1276<br>fsip 1276  |     |        | LOG TOPS - K.B.   | 3158'   |
| DST #2: 4264 - 4313<br>10" 45" 30" 45"<br>weak blow - died in 9"<br>flushed 2nd open; rec. 10' mud; no shows<br>ifp 50 - 50<br>ffp 60 - 60<br>isip 50<br>fsip 60   |     |        | Anhydrite<br>Heebner<br>Lansing<br>B/KC<br>Marmaton<br>Cherokee Shale<br>Johnson<br>Miss.<br>LTD<br>RTD | 2630 (+528)<br>4057 (-899)<br>4101 (-943)<br>4381 (-1224)<br>4414 (-1257)<br>4611 (-1453)<br>4654 (-1496)<br>4739 (-1581)<br>4830 (-1672) |
| DST #3: 4595 - 4690<br>45" 60" 45" 60"<br>weak, increasing to fair, blow on 1st open;<br>weak to steady blow, 2nd open<br>rec. 70' sl. OCM, 5% oil, 95% mud<br>60' sl. OCM, 2% oil, 90% mud, 8% water<br>bottom 60' - 60' of mud<br>ifp 81 - 91<br>ffp 142 - 142<br>isip 998<br>fsip 948 |     |        |   |   |
| Plug @ 1450' with 70 sacks; @ 240' with 40 sacks;<br>solid bridge plug @ 40' w/10 sacks; rathole 10 sacks;<br>total 130 sacks 50/50 Posmix, 6% gel. PD 9:30 p.m.<br>10/22/81. State Agent: Gilbert Balchazor   |     |        |   |   |

USE ADDITIONAL SHEETS, IF NECESSARY, TO COMPLETE WELL RECORD.

|               |   |
|---------------|---|
| Date Received | <br>_____<br>Signature<br>Operator<br>_____<br>Title<br>October 22, 1981<br>_____<br>Date |
|---------------|---|