

15-109-20618

Smith 1

14-11s-34w

WELL NAME: Smith #1-~~1~~
OPERATOR: Pelican Hill Oil & Gas Inc
LOCATION: Sec 14 Rge 11S Twp 34W
Logan County Kansas
DATE: 03/26/96

TRILOBITE TESTING L.L.C.

OPERATOR : Pelican Hill Oil & Gas DATE 03/25/96
 WELL NAME: Smith #1-13 KB 3163.00 ft TICKET NO: 8825 DST #1
 LOCATION : 14-11S-34W, Logan Cty KS GR 3158.00 ft FORMATION: KC "I - J"
 INTERVAL : 4255.00 To 4312.00 ft TD 4312.00 ft TEST TYPE: CONVENTIONAL

RECORDER DATA

Mins	Field	1	2	3	4	TIME DATA-----
PF 15 Rec.	11058	11058	11057			PF Fr. 2227 to 2242 hr
SI 15 Range (Psi)	4475.0	4475.0	4500.0	0.0	0.0	IS Fr. 2242 to 2257 hr
SF 30 Clock (hrs)	AK-1	AK-1	AK-1			SF Fr. 2257 to 2327 hr
FS 30 Depth (ft)	4309.0	4309.0	4257.0	0.0	0.0	FS Fr. 2327 to 2357 hr

	Field	1	2	3	4	
A. Init Hydro	2104.0	2085.0	0.0	0.0	0.0	T STARTED 2030 hr
B. First Flow	72.0	58.0	0.0	0.0	0.0	T ON BOTM 2225 hr
B1. Final Flow	72.0	58.0	0.0	0.0	0.0	T OPEN 2227 hr
C. In Shut-in	1042.0	1020.0	0.0	0.0	0.0	T PULLED 2357 hr
D. Init Flow	77.0	60.0	0.0	0.0	0.0	T OUT 0200 hr
E. Final Flow	72.0	60.0	0.0	0.0	0.0	
F. Fl Shut-in	1103.0	1087.0	0.0	0.0	0.0	TOOL DATA-----
G. Final Hydro	2098.0	2090.0	0.0	0.0	0.0	Tool Wt. 0.00 lbs
Inside/Outside	0	0	I			Wt Set On Packer 26000.00 lbs
						Wt Pulled Loose 60000.00 lbs
						Initial Str Wt 44000.00 lbs
						Unseated Str Wt 44000.00 lbs
						Bot Choke 0.75 in
						Hole Size 7.88 in
						D Col. ID 2.25 in
						D. Pipe ID 3.80 in
						D.C. Length 0.00 ft
						D.P. Length 4275.00 ft

RECOVERY

Tot Fluid 30.00 ft of 0.00 ft in DC and 0.00 ft in DP
 20.00 ft of Drilling mud
 10.00 ft of Drilling mud w/ trace oil - 2% oil, 98% mud

RW 2.1 @ 60 F

SALINITY 3150.00 P.P.M. A.P.I. Gravity 0.00

BLOW DESCRIPTION

Initial Flow -
 Weak blow, built to 1"

Initial Shutin -
 No return

Final Flow -
 Weak .25" blow

Final Shutin -
 No return

SAMPLES:

SENT TO:

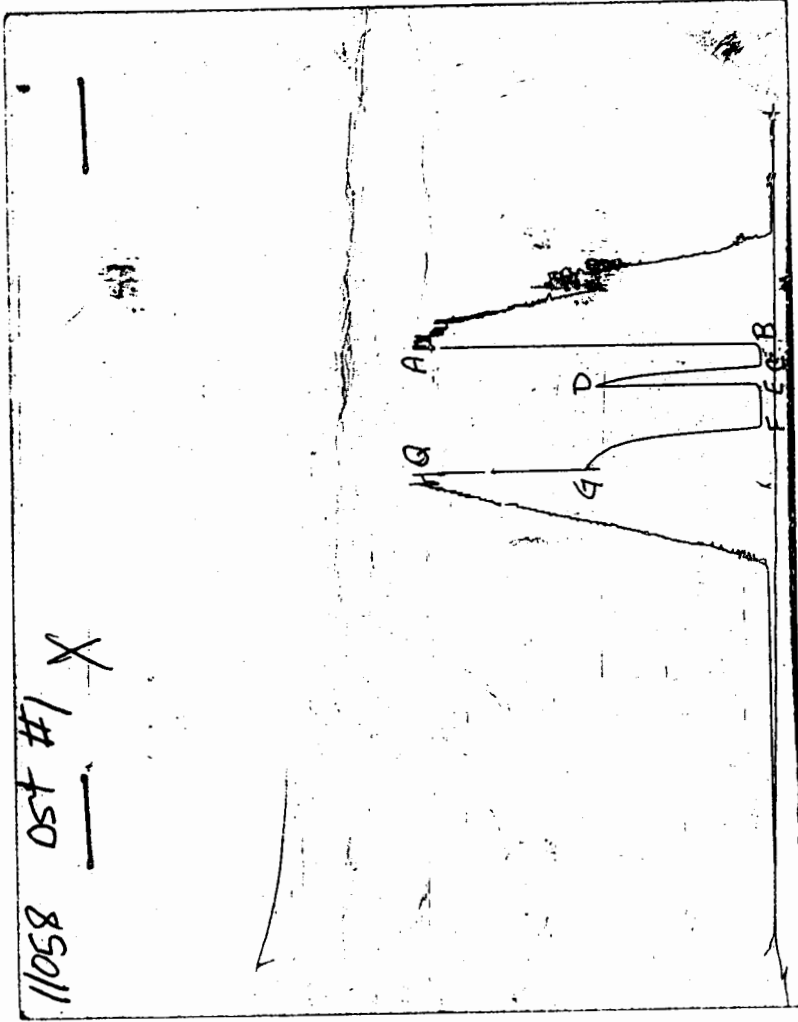
MUD DATA-----

Mud Type	Chemical
Weight	9.00 lb/c
Vis.	48.00 S/L
W.L.	9.60 in3
F.C.	0.00 in
Mud Drop	

Amt. of fill	0.00 ft
Btm. H. Temp.	108.00 F
Hole Condition	
% Porosity	0.00
Packer Size	6.75 in
No. of Packers	2
Cushion Amt.	0.00
Cushion Type	
Reversed Out	
Tool Chased	
Tester	Shane McBride
Co. Rep.	Al Gross
Contr.	Abercrombie
Rig #	8
Unit #	
Pump T.	

Test Successful: Y

CHART PAGE



This is a photocopy of the actual AK-1 recorder chart

TRILOBITE TESTING L.L.C.

P.O. Box 362 • Hays, Kansas 67601

No 8825

Test Ticket

Well Name & No. <u>Smith #1</u>		Test No. <u>1</u>	Date <u>3-25-96</u>
Company <u>Petroleum With Oil & Gas</u>		Zone Tested <u>(I-J) KC</u>	
Address <u>461 N. El Camino Real, Suite 203 San Clemente Calif, 92672</u>		Elevation <u>3163'</u>	KB <u>3158'</u> GL
Co. Rep / Geo. <u>AH Gross, Randy</u>	Cont. <u>Abe Crombie #8</u>	Est. Ft. of Pay	Por. %
Location: Sec. <u>14</u>	Twp. <u>11</u>	Rge. <u>34</u>	Co. <u>Logan</u> State <u>K5</u>
No. of Copies <u>None</u>	Distribution Sheet (Y, N) <u>N</u>	Turnkey (Y, N) <u>N</u>	Evaluation (Y, N)

Interval Tested <u>4255'</u>	<u>4312'</u>	Initial Str Wt./Lbs. <u>44,000</u>	Unseated Str Wt./Lbs. <u>44,000</u>
Anchor Length	<u>37'</u>	Wt. Set Lbs. <u>26,000</u>	Wt. Pulled Loose/Lbs. <u>60,000</u>
Top Packer Depth	<u>4250'</u>	Hole Size — 7 7/8" <input checked="" type="checkbox"/>	Rubber Size — 6 3/4" <input checked="" type="checkbox"/>
Bottom Packer Depth	<u>4255'</u>	Wt. Pipe I.D. — 2.7 Ft. Run	
Total Depth	<u>4312'</u>	Drill Collar — 2.25 Ft. Run	
Mud Wt. <u>9.0</u>	LCM <u>Trace</u> Vis. <u>48</u> WL <u>9.6</u>	Drill Pipe Size <u>4 1/2 XH</u>	Ft. Run <u>4275'</u>
Blow Description <u>Weak blow built to 1" in.</u>			

I.S.I: No return

F.F: Weak 1/4" in blow

F.S.I: No return

Recovery — Total Feet	Ft. in DC	Ft. in WP	Ft. in DP
Rec. <u>20'</u>	Feet Of <u>Drily mud</u>	%gas <u>2</u> %oil <u>2</u> %water <u>98</u> %mud <u>100</u>	
Rec. <u>10'</u>	Feet Of <u>Drily mud Trace oil</u>	%gas <u>2</u> %oil <u>2</u> %water <u>98</u> %mud <u>100</u>	
Rec. _____	Feet Of _____	%gas _____ %oil _____ %water _____ %mud _____	
Rec. _____	Feet Of _____	%gas _____ %oil _____ %water _____ %mud _____	
Rec. _____	Feet Of _____	%gas _____ %oil _____ %water _____ %mud _____	

BHT 108' °F Gravity _____ °API D@ _____ °F Corrected Gravity _____ °API

RW 2.1 @ 60 °F Chlorides 3,150 ppm Recovery Chlorides 3,000 ppm System

- (A) Initial Hydrostatic Mud 2104 PSI Recorder No. 11057 T-Started 8:30 P.M.
- (B) First Initial Flow Pressure 72 PSI @ (depth) 4257' T-Open 10:27 P.M.
- (C) First Final Flow Pressure 72 PSI Recorder No. 11058 T-Pulled 11:57 P.M.
- (D) Initial Shut-in Pressure 1042 PSI @ (depth) 4309' T-Out 2:00 A.M.
- (E) Second Initial Flow Pressure 77 PSI Recorder No. _____
- (F) Second Final Flow Pressure 72 PSI @ (depth) _____
- (G) Final Shut-in Pressure 1103 PSI Initial Opening 15 Test X 600
- (H) Final Hydrostatic Mud 2098 PSI Initial Shut-in 15 Jars _____

Final Flow 30 Safety Joint _____
 Final Shut-in 30 Straddle _____

TRILOBITE TESTING L.L.C. SHALL NOT BE LIABLE FOR DAMAGE OF ANY KIND OF THE PROPERTY OR PERSONNEL OF THE ONE FOR WHOM A TEST IS MADE, OR FOR ANY LOSS SUFFERED OR SUSTAINED, DIRECTLY OR INDIRECTLY, THROUGH THE USE OF ITS EQUIPMENT, OR ITS STATEMENTS OR OPINION CONCERNING THE RESULTS OF ANY TEST. TOOLS LOST OR DAMAGED IN THE HOLE SHALL BE PAID FOR AT COST BY THE PARTY FOR WHOM THE TEST IS MADE.

Approved By _____
 Our Representative Steve McQuinn

Circ. Sub X N/C
 Sampler _____
 Extra Packer _____
 Elect. Rec. _____
 Other _____
 TOTAL PRICE \$ 600

5

TRILOBITE TESTING L.L.C.

OPERATOR : Pelican Hill Oil & Gas DATE 03/26/96
 WELL NAME: Smith #1-13 KB 3163.00 ft TICKET NO: 9201 DST #2
 LOCATION : 14-11S-34W, Logan Cty KS GR 3158.00 ft FORMATION: KC "K"
 INTERVAL : 5302.00 To 5335.00 ft TD 5335.00 ft TEST TYPE: CONVENTIONAL

RECORDER DATA

Mins	Field	1	2	3	4	TIME DATA-----
PF 30 Rec.	11058	11058	11057			PF Fr. 1028 to 1058 hr
SI 45 Range(Psi)	4475.0	4475.0	4500.0	0.0	0.0	IS Fr. 1058 to 1143 hr
SF 60 Clock(hrs)	AK-1	AK-1	AK-1			SF Fr. 1143 to 1243 hr
FS 75 Depth(ft)	5332.0	5332.0	5304.0	0.0	0.0	FS Fr. 1243 to 1358 hr

	Field	1	2	3	4	
A. Init Hydro	2109.0	2101.0	0.0	0.0	0.0	T STARTED 0900 hr
B. First Flow	83.0	78.0	0.0	0.0	0.0	T ON BOTM 1026 hr
Bl. Final Flow	94.0	98.0	0.0	0.0	0.0	T OPEN 1028 hr
C. In Shut-in	444.0	444.0	0.0	0.0	0.0	T PULLED 1358 hr
D. Init Flow	133.0	127.0	0.0	0.0	0.0	T OUT 1605 hr
E. Final Flow	161.0	153.0	0.0	0.0	0.0	
F. Fl Shut-in	438.0	427.0	0.0	0.0	0.0	
G. Final Hydro	2098.0	2094.0	0.0	0.0	0.0	TOOL DATA-----
Inside/Outside	0	0	I			Tool Wt. 0.00 lbs
						Wt Set On Packer 26000.00 lbs
						Wt Pulled Loose 83000.00 lbs
						Initial Str Wt 44000.00 lbs
						Unseated Str Wt 48000.00 lbs
						Bot Choke 0.75 in
						Hole Size 7.88 in
						D Col. ID 2.25 in
						D. Pipe ID 3.80 in
						D.C. Length 0.00 ft
						D.P. Length 3738.00 ft
						H.W. I.D 2.70 in
						H.W. Length 568.00 ft

RECOVERY

Tot Fluid 304.00 ft of 0.00 ft in DC and 0.00 ft in DP
 214.00 ft of Clean gassy oil - 36% gas, 64% oil
 90.00 ft of Oil cut gassy mud - 32% gas, 18% oil, 50% mud

SALINITY 0.00 P.P.M. A.P.I. Gravity 38.00

BLOW DESCRIPTION

Bottom of bucket in 16 min
 Initial Shutin -
 Bled blow, return in 5 min, built to .25"
 Final Flow -
 .25" blow at open, built to bottom of bucket in 19 min
 Final Shutin -
 Bled blow, return in 3 min, built to 1"
 SAMPLES:
 SENT TO:

MUD DATA-----
 Mud Type Chemical
 Weight 9.00 lb/cf
 Vis. 48.00 S/L
 W.L. 8.80 in3
 F.C. 0.00 in
 Mud Drop
 Amt. of fill 0.00 ft
 Btm. H. Temp. 117.00 F
 Hole Condition
 % Porosity 0.00
 Packer Size 6.75 in
 No. of Packers 2
 Cushion Amt. 0.00
 Cushion Type
 Reversed Out
 Tool Chased
 Tester Shane McBride
 Co. Rep. Al Gross
 Contr. Abercrombie
 Rig # 8
 Unit #
 Pump T.

Test Successful: Y

CALCULATED RECOVERY ANALYSIS WEIGHT PIPE

DST # 2

TICKE 9201

SAMPLE #	TOTAL FEET	GAS		OIL		WATER		MUD	
		%	FEET	%	FEET	%	FEET	%	FEET
1	214	36	77.04	64	136.96	0	0	0	0
2	90	32	28.8	18	16.2	0	50	45	0
3			0		0	0	0	0	0
4			0		0	0	0	0	0
5			0		0	0	0	0	0
TOTAL	304	34.8	105.84	50.382	153.16	0	0	14.803	45

HRS OP BBL/DAY

BBL OIL= 1.0721 * 1.5 17.154
 BBL WAT 0 * 0
 BBL MUD 0.315
 BBL GAS= 0.7409

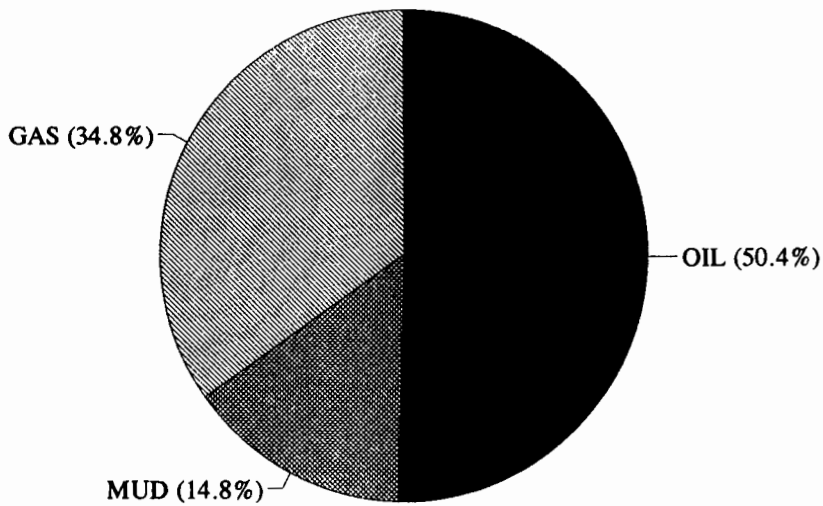
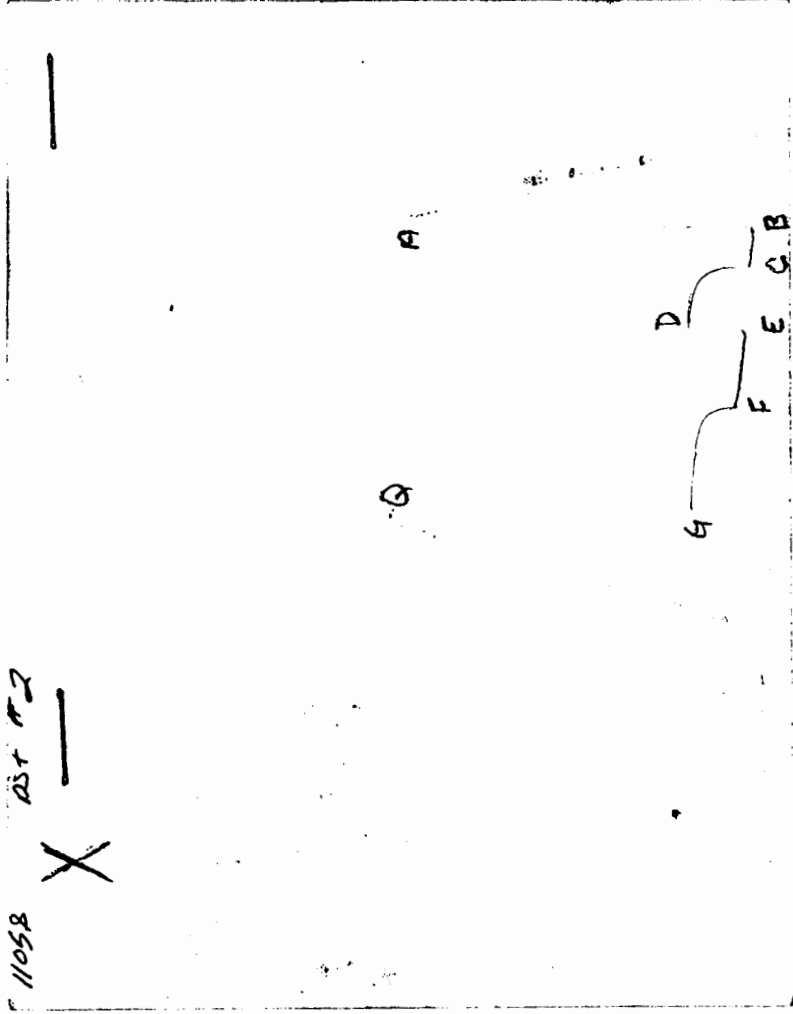


CHART PAGE



This is a photocopy of the actual AK-1 recorder chart

TRILOBITE TESTING L.L.C.

P.O. Box 362 • Hays, Kansas 67601

Test Ticket

Nº 9201

Well Name & No. Smith #1-13 Test No. 2 Date 3-26-96
 Company Petroleum High Oil & Gas Zone Tested (K) KC
 Address 1401 N El Camino Real Suite 203 San Clemente Ca, 92672 Elevation 3163' KB 3158' GL
 Co. Rep / Geo. Al Gross, Randy Killian Cont. Abucriomic #8 Est. Ft. of Pay Por. %
 Location: Sec. 14 Twp. 11 Rge. 34 Co. Logan State KS
 No. of Copies None Distribution Sheet (Y, N) N Turnkey (Y, N) N Evaluation (Y, N)

Interval Tested 5302 5335' Initial Str Wt./Lbs. 44,000 Unseated Str Wt./Lbs. 48,000
 Anchor Length 33' Wt. Set Lbs. 26,000 Wt. Pulled Loose/Lbs. 83,000
 Top Packer Depth 5297' Hole Size — 7 7/8" Rubber Size — 6 3/4"
 Bottom Packer Depth 5302' Wt. Pipe I.D. — 2.7 Ft. Run 568'
 Total Depth 5335' Drill Collar — 2.25 Ft. Run
 Mud Wt. 9.0 LCM Trace Vis. 48 WL B.B. Drill Pipe Size 4 1/2 X H Ft. Run 3738'
 Blow Description B.O.B in 16 min.

F.S.I: Bleed blow - return in 5 min. built to 1/4"
 F.F: 1/4" in blow @ open built to B.O.B in 19 min.
 F.S.I: bleed blow - return in 3 min built to 1" in.

Recovery — Total Feet	Ft. in DC	Ft. in WP	Ft. in DP			
Rec. <u>214'</u>	Feet Of <u>clean Gassy O.L</u>	<u>36%</u> gas <u>64%</u> oil	<u> </u>	%water	%mud	
Rec. <u>90'</u>	Feet Of <u>oil cut Gassy mud</u>	<u>32%</u> gas <u>18%</u> oil	<u> </u>	%water	<u>50%</u> mud	
Rec. <u> </u>	Feet Of <u> </u>	%gas %oil	<u> </u>	%water	%mud	
Rec. <u> </u>	Feet Of <u> </u>	%gas %oil	<u> </u>	%water	%mud	
Rec. <u>600'</u>	Feet Of <u>GAS IN P.Pe</u>	%gas %oil	<u> </u>	%water	%mud	

BHT 117° °F Gravity 39 °API D@ 70 °F Corrected Gravity 38 °API
 RW @ °F Chlorides ppm Recovery Chlorides 5,000 ppm System

(A) Initial Hydrostatic Mud 2109 PSI Recorder No. 11057 T-Started 9:00 A.M.
 (B) First Initial Flow Pressure 83 PSI @ (depth) 5304' T-Open 10:28 A.M.
 (C) First Final Flow Pressure 99 PSI Recorder No. 11058 T-Pulled 1:58 P.M.
 (D) Initial Shut-in Pressure 444 PSI @ (depth) 5332' T-Out 4:05 P.M.
 (E) Second Initial Flow Pressure 133 PSI Recorder No.
 (F) Second Final Flow Pressure 161 PSI @ (depth)
 (G) Final Shut-in Pressure 438 PSI Initial Opening 30 Test Y 700
 (H) Final Hydrostatic Mud 2098 PSI Initial Shut-in 45 Jars
 Final Flow 60 Safety Joint
 Final Shut-in 75 Straddle
600' GFP. Circ. Sub X N/C
 Sampler
 Extra Packer
 Elect. Rec.
 Other

TRILOBITE TESTING L.L.C. SHALL NOT BE LIABLE FOR DAMAGE OF ANY KIND OF THE PROPERTY OR PERSONNEL OF THE ONE FOR WHOM A TEST IS MADE, OR FOR ANY LOSS SUFFERED OR SUSTAINED, DIRECTLY OR INDIRECTLY, THROUGH THE USE OF ITS EQUIPMENT, OR ITS STATEMENTS OR OPINION CONCERNING THE RESULTS OF ANY TEST. TOOLS LOST OR DAMAGED IN THE HOLE SHALL BE PAID FOR AT COST BY THE PARTY FOR WHOM THE TEST IS MADE.

Approved By Randy Killian
 Our Representative Steve [Signature]

TOTAL PRICE \$ 700

5