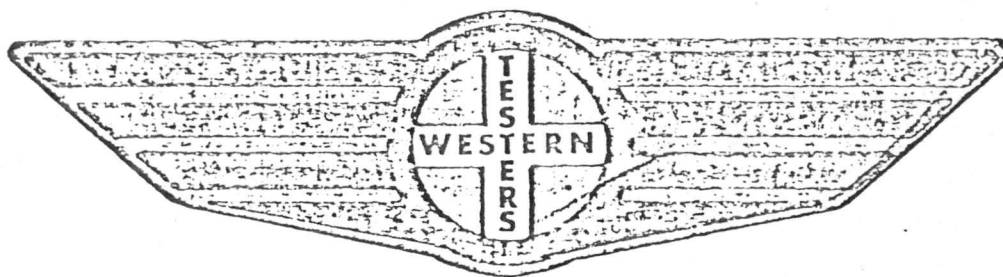


FORMATION TEST REPORT



Home Office:

Wichita, Kansas 67201

P.O. Box 1599

Phone (316) 262-5861

WESTERN TESTING CO. INC.
SUBSURFACE PRESSURE SURVEY

DATE: 9/20/84
CUSTOMER: RAINS & WILLIAMSON OIL CO INC
WELL: 3 TEST: 1
ELEVATION (KB): 1731 FORMATION: KANSAS CITY
SECTION: 34 TOWNSHIP: 11S
RANGE: 14W COUNTY: RUSSELL STATE: KANSAS
GAUGE SN #1563 RANGE: 4200 CLOCK: 12

INTERVAL TEST FROM: 2942 FT TO: 2972 FT TOTAL DEPTH: 2972 FT
DEPTH OF SELECTIVE ZONE: FT
PACKER DEPTH: 2937 FT SIZE: 6 5/8 IN PACKER DEPTH: 2942 FT SIZE: 6 5/8 IN
PACKER DEPTH: FT SIZE: IN PACKER DEPTH: FT SIZE: IN

DRILLING CONTRACTOR: RAINS & WILLIAMSON
MUD TYPE: STARCH VISCOSITY: 43
WEIGHT: 9.7 WATER LOSS (CC): 15.2
CHLORIDES (P.P.M.): 64000
JARS - MAKE: SERIAL NUMBER:
DID WELL FLOW? NO REVERSED OUT? NO
DRILL COLLAR LENGTH: FT I.D.: IN
WEIGHT PIPE LENGTH: FT I.D.: IN
DRILL PIPE LENGTH: 2920 FT I.D.: 3.8 IN
TEST TOOL LENGTH: 22 FT TOOL SIZE: 5 1/2 IN
ANCHOR LENGTH: 30 FT SIZE: 5 1/2 IN
SURFACE CHOKE SIZE: 3/4 IN BOTTOM CHOKE SIZE: 3/4 IN
MAIN HOLE SIZE: 7 7/8 IN TOOL JOINT SIZE: 4 1/2 XH IN

BLOW: INITIAL FLOW PERIOD WEAK BLOW.
1" TO 2" BLOW.
FINAL FLOW PERIOD WEAK BLOW. 2" BLOW.

RECOVERED: 170 FT OF: GAS ABOVE FLUID.
RECOVERED: 70 FT OF: HEAVY OIL & GAS CUT MUD.
RECOVERED: FT OF: 22% OIL; 23% GAS; 5% WATER; 50% MUD.
RECOVERED: FT OF:
RECOVERED: FT OF:
RECOVERED: FT OF:
RECOVERED: FT OF:
RECOVERED: FT OF:
RECOVERED: FT OF:
RECOVERED: FT OF:

REMARKS: SLID TOOL APPROXIMATLEY 7 FEET
TO BOTTOM.

TIME SET PACKER(S): 1:45 AM TIME STARTED OFF BOTTOM: 4:15 AM
WELL TEMPERATURE: 100 °F
INITIAL HYDROSTATIC PRESSURE: (A) 1593 PSI
INITIAL FLOW PERIOD MIN: 30 (B) 54 PSI TO (C) 54 PSI
INITIAL CLOSED IN PERIOD MIN: 30 (D) 215 PSI
FINAL FLOW PERIOD MIN: 60 (E) 56 PSI TO (F) 56 PSI
FINAL CLOSED IN PERIOD MIN: 30 (G) 225 PSI
FINAL HYDROSTATIC PRESSURE (H) 1567 PSI

WESTERN TESTING CO. INC.
PRESSURE DATA

TICKET #6239

LEASE: "C" STIELOW

TEST: 1

GEOLOGIST: MCLEOD

FORMATION: KANSAS CITY

TOWNSHIP: 11S

COUNTY: RUSSELL

STATE: KANSAS

RANGE: 4200

CLOCK: 12

(B) FIRST INITIAL FLOW PRESSURE: 54 PSI

(C) FIRST FINAL FLOW PRESSURE: 54 PSI

(D) INITIAL CLOSED-IN PRESSURE: 215 PSI

(E) SECOND INITIAL FLOW PRESSURE: 56 PSI

(F) SECOND FINAL FLOW PRESSURE: 56 PSI

(G) FINAL CLOSED-IN PRESSURE: 225 PSI

(H) FINAL HYDROSTATIC PRESSURE: 1567 PSI

WELL TEMPERATURE: 100 °F

OPEN TOOL: 1:45 AM

	TIME - GIVEN	TIME - ACTUAL
FIRST FLOW PRESSURE:	30 MIN	30 MIN

INITIAL CLOSED-IN PRESSURE: 30 MIN 30 MIN

SECOND FLOW PRESSURE: 60 MIN 60 MIN

FINAL CLOSED-IN PRESSURE: 30 MIN 30 MIN

PRESSURE BREAKDOWN

PT	FIRST FLOW		INITIAL SHUT-IN		SECOND FLOW		FINAL SHUT-IN	
	MIN	PRESSURE	MIN	PRESSURE	MIN	PRESSURE	MIN	PRESSURE
1	0	54	0	54	0	56	0	56
2	5	54	3	54	5	56	3	58
3	10	54	6	54	10	56	6	63
4	15	54	9	57	15	56	9	73
5	20	54	12	65	20	56	12	83
6	25	54	15	78	25	56	15	103
7	30	54	18	100	30	56	18	125
8			21	124	35	56	21	159
9			24	156	40	56	24	191
10			27	192	45	56	27	212
11			30	215	50	56	30	225
12					55	56		
13					60	56		

15

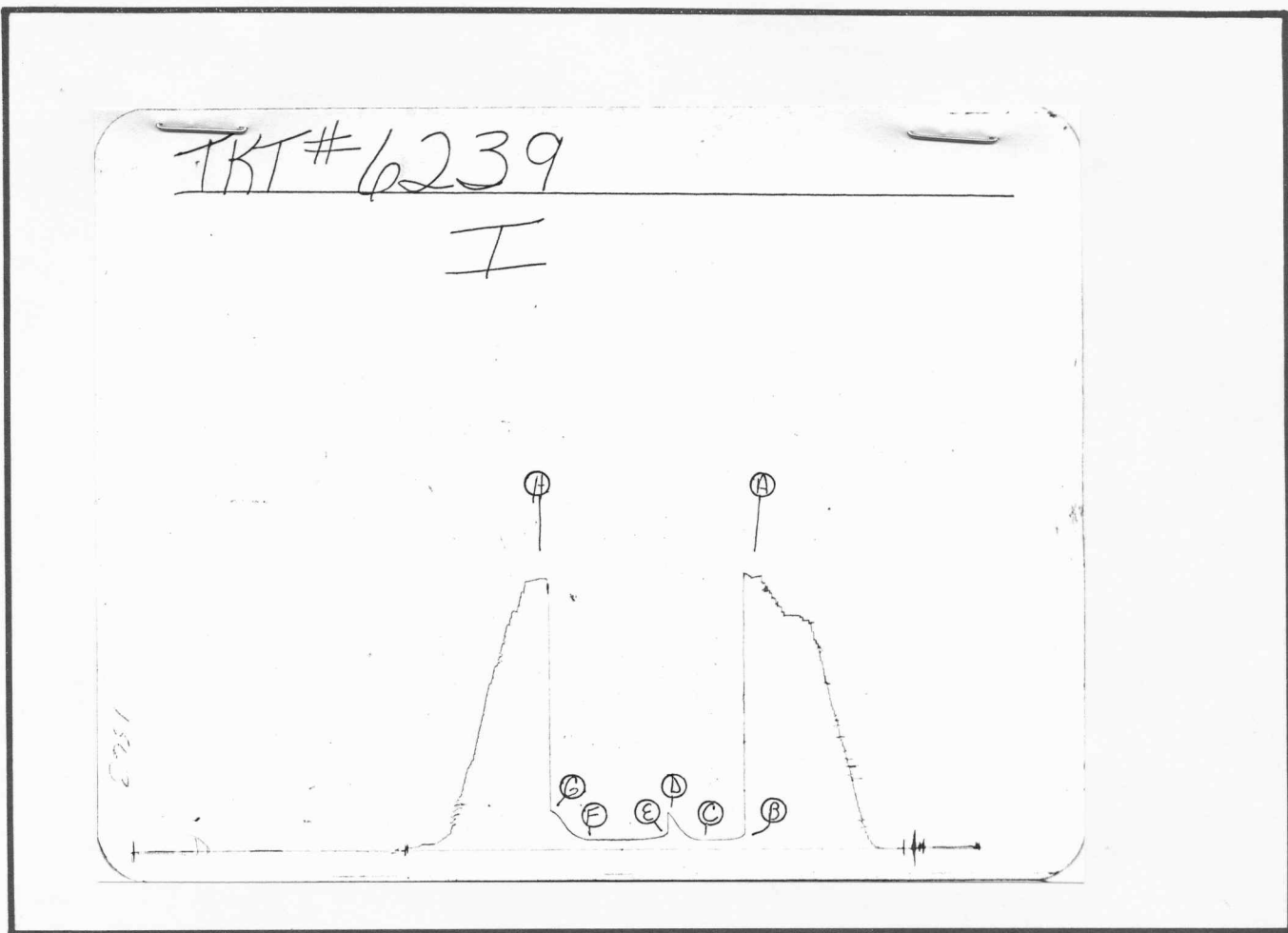
16

18

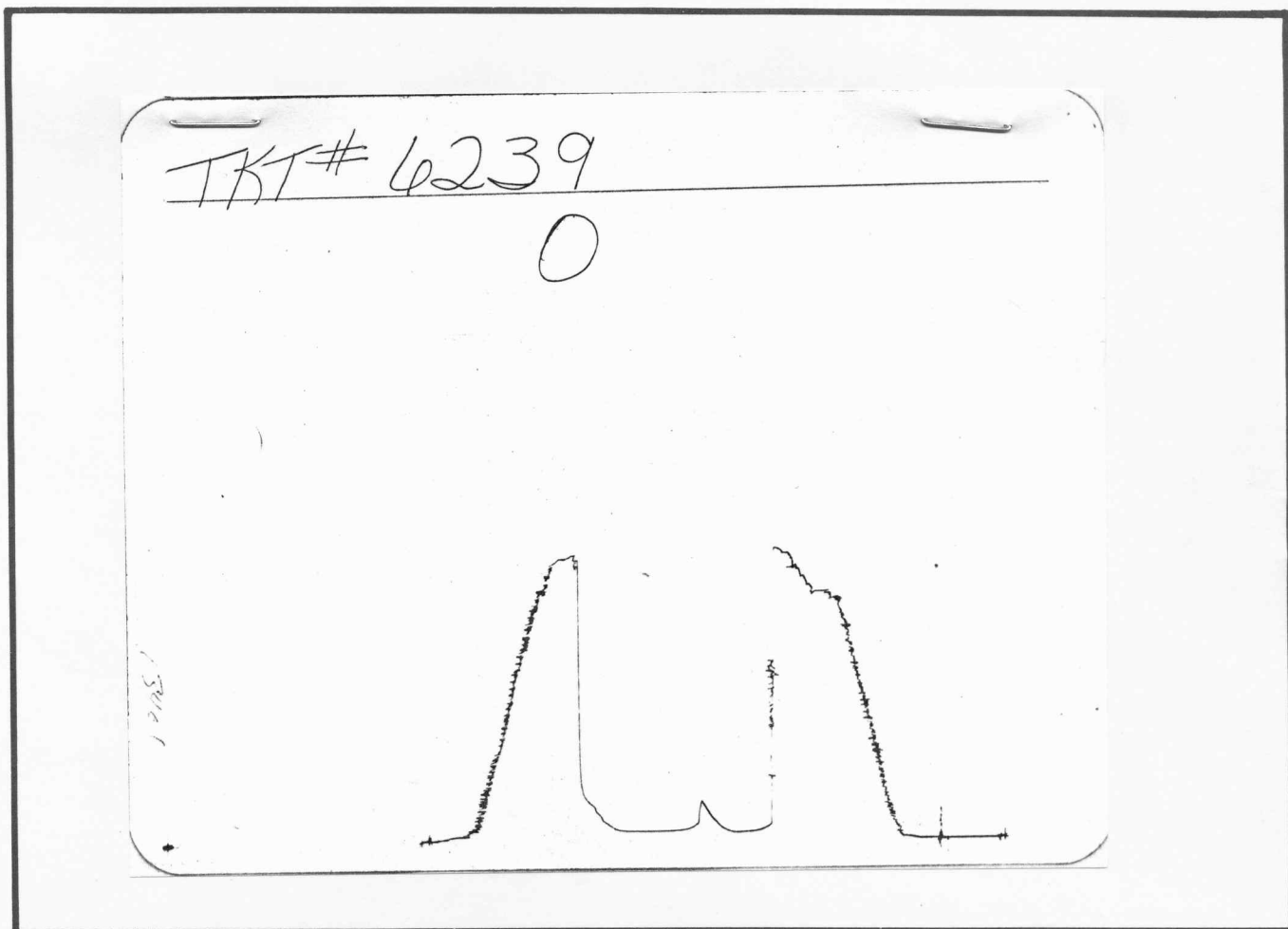
20

23
24

30

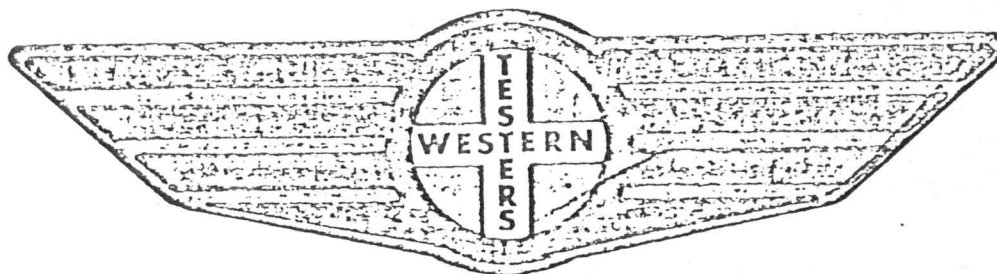


Inside Recorder



Outside Recorder

FORMATION TEST REPORT



Home Office:

Wichita, Kansas 67201

P.O. Box 1599

Phone (316) 262-5861

WESTERN TESTING CO. INC.
SUBSURFACE PRESSURE SURVEY

DATE: 9/20/84 TICKET #6240
CUSTOMER: RAINS & WILLIAMSON OIL CO INC LEASE: "C" STIELOW
WELL: 3 TEST: 2 GEOLOGIST: MCLEOD
ELEVATION (KB): 1731 FORMATION: KANSAS CITY
SECTION: 34 TOWNSHIP: 11S
RANGE: 14W COUNTY: RUSSELL STATE: KANSAS
GAUGE SN #1563 RANGE: 4200 CLOCK: 12

INTERVAL TEST FROM: 2978 FT TO: 2988 FT TOTAL DEPTH: 2988 FT
DEPTH OF SELECTIVE ZONE: FT
PACKER DEPTH: 2973 FT SIZE: 6 5/8 IN PACKER DEPTH: 2978 FT SIZE: 6 5/8 IN
PACKER DEPTH: FT SIZE: IN PACKER DEPTH: FT SIZE: IN

DRILLING CONTRACTOR: RAINS & WILLIAMSON
MUD TYPE: STARCH VISCOSITY: 43
WEIGHT: 9.7 WATER LOSS (CC): 8.0
CHLORIDES (P.P.M.): 62000
JARS - MAKE: SERIAL NUMBER:
DID WELL FLOW? NO REVERSED OUT? NO
DRILL COLLAR LENGTH: FT I.D.: IN
WEIGHT PIPE LENGTH: FT I.D.: IN
DRILL PIPE LENGTH: 2956 FT I.D.: 3.8 IN
TEST TOOL LENGTH: 22 FT TOOL SIZE: 5 1/2 IN
ANCHOR LENGTH: 10 FT SIZE: 5 1/2 IN
SURFACE CHOKE SIZE: 3/4 IN BOTTOM CHOKE SIZE: 3/4 IN
MAIN HOLE SIZE: 7 7/8 IN TOOL JOINT SIZE: 4 1/2 XH IN

BLOW: INITIAL FLOW PERIOD WEAK BLOW
INCREASED TO A FAIR BLOW. 1" TO
4" BLOW. FINAL FLOW PERIOD FAIR
BLOW. 4" BLOW.

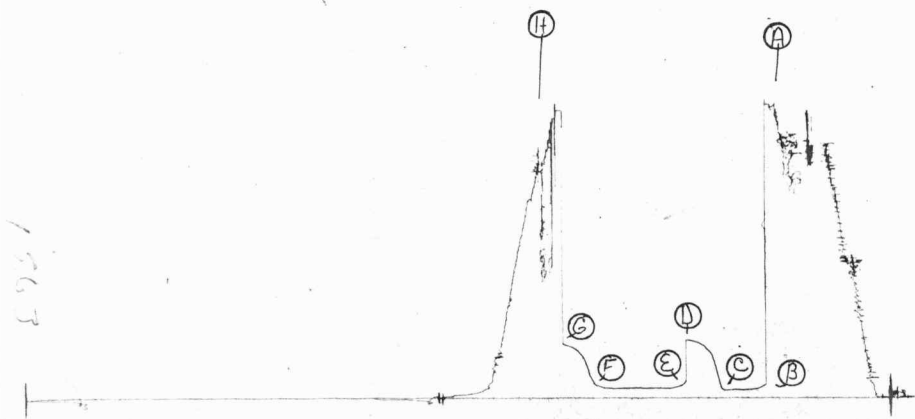
RECOVERED: 300 FT OF: GAS ABOVE FLUID.
RECOVERED: 80 FT OF: MUDDY GASSY OIL.
RECOVERED: FT OF: 52% OIL; 25% GAS; 10% WATER; 13% MUD.
RECOVERED: FT OF:
RECOVERED: FT OF:
RECOVERED: FT OF:
RECOVERED: FT OF:
RECOVERED: FT OF:
RECOVERED: FT OF:
RECOVERED: FT OF:

REMARKS: SLID TOOL APPROXIMATLEY 4 FEET
TO BOTTOM.

TIME SET PACKER(S): 1:54 PM TIME STARTED OFF BOTTOM: 4:24 PM
WELL TEMPERATURE: 100 °F
INITIAL HYDROSTATIC PRESSURE: (A) 1614 PSI
INITIAL FLOW PERIOD MIN: 30 (B) 45 PSI TO (C) 45 PSI
INITIAL CLOSED IN PERIOD MIN: 30 (D) 322 PSI
FINAL FLOW PERIOD MIN: 60 (E) 54 PSI TO (F) 57 PSI
FINAL CLOSED IN PERIOD MIN: 30 (G) 300 PSI
FINAL HYDROSTATIC PRESSURE (H) 1585 PSI

~~TKT~~ # 6240

I



Inside Recorder

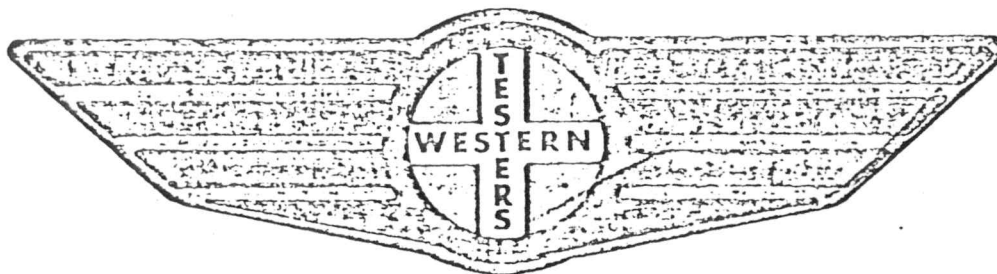
~~TKT~~ # 6240

O



Outside Recorder

FORMATION TEST REPORT



Home Office:

Wichita, Kansas 67201

P.O. Box 1599

Phone (316) 262-5861

WESTERN TESTING CO. INC.
SUBSURFACE PRESSURE SURVEY

DATE: 9/21/84
CUSTOMER: RAINS & WILLIAMSON OIL CO INC
WELL: 3 TEST: 3
ELEVATION (KB): 1731 FORMATION: KANSAS CITY
SECTION: 34 TOWNSHIP: 11S
RANGE: 14W COUNTY: RUSSELL STATE: KANSAS
GAUGE SN #1563 RANGE: 4200 CLOCK: 12

INTERVAL TEST FROM: 3028 FT TO: 3052 FT TOTAL DEPTH: 3052 FT
DEPTH OF SELECTIVE ZONE: FT
PACKER DEPTH: 3023 FT SIZE: 6 5/8 IN PACKER DEPTH: 3028 FT SIZE: 6 5/8 IN
PACKER DEPTH: FT SIZE: IN PACKER DEPTH: FT SIZE: IN

DRILLING CONTRACTOR: RAINS & WILLIAMSON
MUD TYPE: STARCH VISCOSITY: 43
WEIGHT: 9.7 WATER LOSS (CC): 8.0
CHLORIDES (P.P.M.): 62000
JARS - MAKE: SERIAL NUMBER:
DID WELL FLOW? NO REVERSED OUT? NO
DRILL COLLAR LENGTH: FT I.D.: IN
WEIGHT PIPE LENGTH: FT I.D.: IN
DRILL PIPE LENGTH: 3006 FT I.D.: 3.8 IN
TEST TOOL LENGTH: 22 FT TOOL SIZE: 5 1/2 IN
ANCHOR LENGTH: 24 FT SIZE: 5 1/2 IN
SURFACE CHOKE SIZE: 3/4 IN BOTTOM CHOKE SIZE: 3/4 IN
MAIN HOLE SIZE: 7 7/8 IN TOOL JOINT SIZE: 4 1/2 XH IN

BLOW: INITIAL FLOW PERIOD WEAK BLOW.
1/2" TO 1 1/2" BLOW. FINAL FLOW
PERIOD WEAK BLOW. 1" BLOW.

RECOVERED: 120 FT OF: SLIGHTLY OIL CUT MUDDY WATER.
RECOVERED: FT OF: 2% OIL; 40% MUD; 58% WATER.
RECOVERED: 120 FT OF: MUDDY WATER.
RECOVERED: FT OF: 15% MUD; 85% WATER; WITH A SHOW OF OIL.
RECOVERED: FT OF: CHLORIDES 82000 PPM.
RECOVERED: FT OF:
RECOVERED: FT OF:
RECOVERED: FT OF:
RECOVERED: FT OF:

REMARKS:

TIME SET PACKER(S): 5:15 AM TIME STARTED OFF BOTTOM: 7:45 AM
WELL TEMPERATURE: 106 °F
INITIAL HYDROSTATIC PRESSURE: (A) 1634 PSI
INITIAL FLOW PERIOD MIN: 30 (B) 54 PSI TO (C) 59 PSI
INITIAL CLOSED IN PERIOD MIN: 30 (D) 738 PSI
FINAL FLOW PERIOD MIN: 60 (E) 92 PSI TO (F) 125 PSI
FINAL CLOSED IN PERIOD MIN: 30 (G) 731 PSI
FINAL HYDROSTATIC PRESSURE (H) 1618 PSI

WESTERN TESTING CO. INC.
PRESSURE DATA

TICKET #6241

LEASE: "C" STIELOW

TEST: 3

GEOLOGIST: MCLEOD

FORMATION: KANSAS CITY

TOWNSHIP: 11S

COUNTY: RUSSELL

STATE: KANSAS

RANGE: 4200

CLOCK: 12

(B) FIRST INITIAL FLOW PRESSURE: 54 PSI

(D) INITIAL CLOSED-IN PRESSURE: 738 PSI

(F) SECOND FINAL FLOW PRESSURE: 125 PSI

(H) FINAL HYDROSTATIC PRESSURE: 1618 PSI

OPEN TOOL: 5:15 AM

FIRST FLOW PRESSURE: 30 MIN 30 MIN

SECOND FLOW PRESSURE: 60 MIN 60 MIN

[illegible]

PRESSURE BREAKDOWN

PT	FIRST FLOW		INITIAL SHUT-IN		SECOND FLOW		FINAL SHUT-IN	
	MIN	PRESSURE	MIN	PRESSURE	MIN	PRESSURE	MIN	PRESSURE
1	0	54	0	59	0	92	0	125
2	5	54	3	636	5	92	3	618
3	10	54	6	680	10	92	6	665
4	15	54	9	701	15	92	9	688
5	20	54	12	713	20	92	12	702
6	25	56	15	720	25	94	15	710
7	30	59	18	727	30	98	18	717
8			21	731	35	102	21	721
9			24	734	40	107	24	725
10			27	736	45	112	27	729
11			30	738	50	117	30	731
12					55	121		
13					60	125		

15

16

17

18

19

20

21

22

23

24

25

25
2626
27

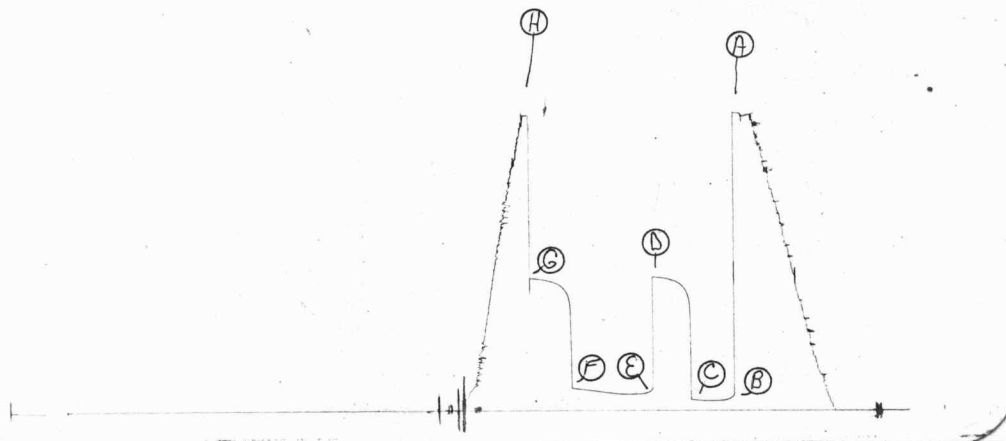
29

28
2929
30

30

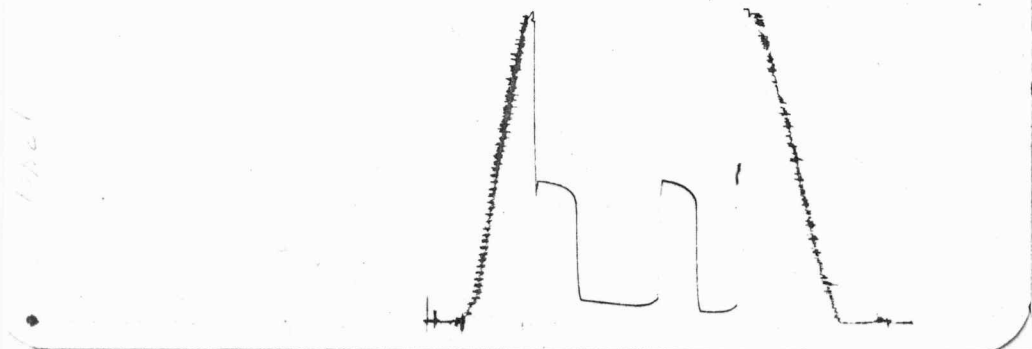
TKT #6241
I

1563



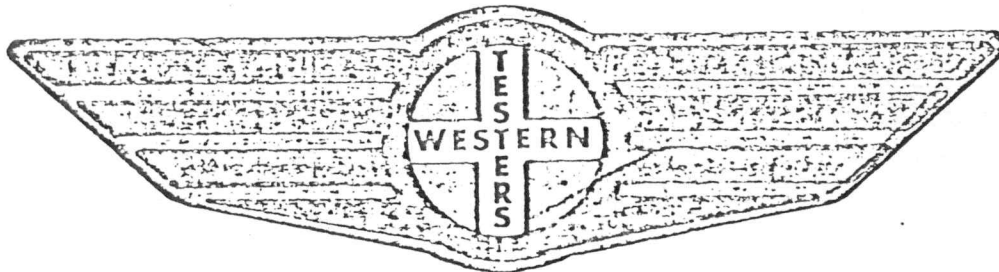
Inside Recorder

TKT #6241
O



Outside Recorder

FORMATION TEST REPORT



Home Office:

Wichita, Kansas 67201

P.O. Box 1599

Phone (316) 262-5861

WESTERN TESTING CO. INC.
SUBSURFACE PRESSURE SURVEY

DATE: 9/22/84

CUSTOMER: RAINS & WILLIAMSON OIL CO INC

WELL: 3

TEST: 4

ELEVATION (KB): 1731

FORMATION: KANSAS CITY

SECTION: 34

TOWNSHIP: 11S

RANGE: 14W

COUNTY: RUSSELL

STATE: KANSAS

GAUGE SN #1563

RANGE: 4200

CLOCK: 12

TICKET #6242

LEASE: "C" STIELOW

GEOLOGIST: MCLEOD

INTERVAL TEST FROM: 3107 FT TO: 3155 FT TOTAL DEPTH: 3155 FT
DEPTH OF SELECTIVE ZONE: FT

PACKER DEPTH: 3102 FT SIZE: 6 5/8 IN PACKER DEPTH: 3107 FT SIZE: 6 5/8 IN
PACKER DEPTH: FT SIZE: IN PACKER DEPTH: FT SIZE: IN

DRILLING CONTRACTOR: RAINS & WILLIAMSON

MUD TYPE: STARCH

VISCOSITY: 42

WEIGHT: 9.5

WATER LOSS (CC): 6.4

CHLORIDES (P.P.M.): 62000

JARS - MAKE:

SERIAL NUMBER:

DID WELL FLOW? NO

REVERSED OUT? NO

DRILL COLLAR LENGTH:

FT I.D.: IN

WEIGHT PIPE LENGTH:

FT I.D.: IN

DRILL PIPE LENGTH: 3085

FT I.D.: 3.8 IN

TEST TOOL LENGTH: 22

FT TOOL SIZE: 5 1/2 IN

ANCHOR LENGTH: 48

FT SIZE: 5 1/2 IN

SURFACE CHOKE SIZE: 3/4

IN BOTTOM CHOKE SIZE: 3/4 IN

MAIN HOLE SIZE: 7 7/8

IN TOOL JOINT SIZE: 4 1/2 XH IN

BLOW: INITIAL FLOW PERIOD VERY WEAK

BLOW. DIED IN 19 MINUTES.

FINAL FLOW PERIOD NO BLOW.

FLUSHED TOOL.

RECOVERED: 10 FT OF: MUD.

RECOVERED: FT OF:

RECOVERED: FT OF:

RECOVERED: FT OF:

RECOVERED: FT OF:

RECOVERED: FT OF:

RECOVERED: FT OF:

RECOVERED: FT OF:

RECOVERED: FT OF:

REMARKS:

TIME SET PACKER(S): 2:40 AM

TIME STARTED OFF BOTTOM: 4:40 AM

WELL TEMPERATURE: 103 °F

INITIAL HYDROSTATIC PRESSURE:

(A) 1654 PSI

INITIAL FLOW PERIOD MIN: 30

(B) 41 PSI TO (C) 41 PSI

INITIAL CLOSED IN PERIOD MIN: 30

(D) 773 PSI

FINAL FLOW PERIOD MIN: 30

(E) 49 PSI TO (F) 33 PSI

FINAL CLOSED IN PERIOD MIN: 30

(G) 713 PSI

FINAL HYDROSTATIC PRESSURE

(H) 1639 PSI

WESTERN TESTING CO. INC.
PRESSURE DATA

DATE: 9/22/84

CUSTOMER: RAINS & WILLIAMSON OIL CO INC

TEST: 4

FORMATION: KANSAS CITY

TOWNSHIP: 11S

COUNTY: RUSSELL

STATE: KANSAS

RANGE: 4200

CLOCK: 12

(A) INITIAL HYDROSTATIC PRESSURE: 1654 PSI

(B) FIRST INITIAL FLOW PRESSURE: 41 PSI

(C) FIRST FINAL FLOW PRESSURE: 41 PSI

(D) INITIAL CLOSED-IN PRESSURE: 773 PSI

(E) SECOND INITIAL FLOW PRESSURE: 49 PSI

(F) SECOND FINAL FLOW PRESSURE: 33 PSI

(G) FINAL CLOSED-IN PRESSURE: 713 PSI

(H) FINAL HYDROSTATIC PRESSURE: 1639 PSI

WELL TEMPERATURE: 103 °F

OPEN TOOL: 2:40 AM

TIME - GIVEN TIME - ACTUAL

FIRST FLOW PRESSURE: 30 MIN 30 MIN

INITIAL CLOSED-IN PRESSURE: 30 MIN 30 MIN

SECOND FLOW PRESSURE: 30 MIN 30 MIN

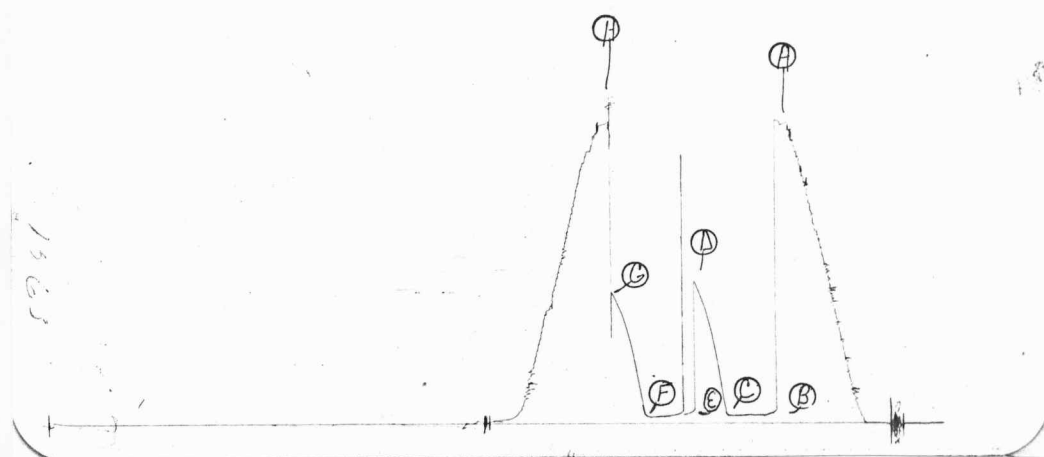
FINAL CLOSED-IN PRESSURE: 30 MIN 30 MIN

PRESSURE BREAKDOWN

PT	FIRST FLOW		INITIAL SHUT-IN		SECOND FLOW		FINAL SHUT-IN	
	MIN	PRESSURE	MIN	PRESSURE	MIN	PRESSURE	MIN	PRESSURE
1	0	41	0	41	0	49	0	33
2	5	41	3	41	5	49	3	33
3	10	41	6	43	10	55	6	44
4	15	41	9	133	15	44	9	144
5	20	41	12	282	20	38	12	266
6	25	41	15	411	25	36	15	383
7	30	41	18	513	30	33	18	472
8			21	599			21	546
9			24	662			24	609
10			27	721			27	660
11			30	773			30	713

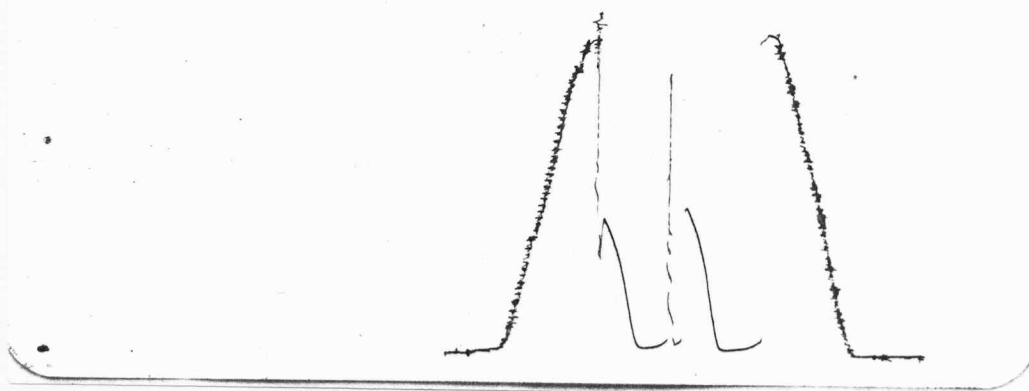
12
13
14
15
16
17
18
19
20
21
22
23
24
25
26
27
28
29
30

TKT# 6242
I



Inside Recorder

TKT# 6242
O



Outside Recorder