



15-167-23597

DIAMOND TESTING

P.O. Box 157

HOISINGTON, KANSAS 67544
(620) 653-7550 • (800) 542-7313

23-12-15W
ON 14:00 9/26/09
OFF 20:15 9/26/09

IND

DRILL-STEM TEST TICKET

FILE:ney2-23dst1

Company BUFFALO RESOURCES Lease & Well No. NEY 2-23
 Contractor DUKE DRILLING RIG 8 Charge to BUFFALO RESOURCES
 Elevation _____ Formation TOPEKA Effective Pay _____ Ft. Ticket No. D617
 Date 9/26/09 Sec. 23 Twp. 12 S Range 15 W County RUSSELL State KANSAS
 Test Approved By CURTIS COVEY Diamond Representative JOHN C. RIEDL

Formation Test No. 1 Interval Tested from 2560 ft. to 2585 ft. Total Depth 2585 ft.
 Packer Depth 2555 ft. Size 6 3/4 in. Packer Depth _____ ft. Size _____ in.
 Packer Depth 2560 ft. Size 6 3/4 in. Packer Depth _____ ft. Size _____ in.
 Depth of Selective Zone Set _____

Top Recorder Depth (Inside) 2563 ft. Recorder Number 30044 Cap. 6000 P.S.I.
 Bottom Recorder Depth (Outside) 2582 ft. Recorder Number 11017 Cap. 4000 P.S.I.
 Below Straddle Recorder Depth _____ ft. Recorder Number _____ Cap. _____ P.S.I.
 Mud Type CHEMICAL Viscosity 57 Drill Collar Length 0 ft. I.D. 2 1/4 in.
 Weight 8.7 Water Loss KCC 7.6 cc. Weight Pipe Length 0 ft. I.D. 2 7/8 in.
 Chlorides 2,300 P.P.M. Drill Pipe Length 2538 ft. I.D. 3 1/2 in.
 Jars: Make BOWEN Serial Number NUT USED Test Tool Length 22 ft. Tool Size 3 1/2-IF in.
 Did Well Flow? NO Reversed Out NO Anchor Length 25 ft. Size 4 1/2-FH in.
 Main Hole Size 7 7/8 Tool Joint Size 4 1/2 XH in. Surface Choke Size 1 in. Bottom Choke Size 5/8 in.

Blow: 1st Open: STRONG (SLOW BUILD TO 8") RECEIVED NO BB
 2nd Open: STRONG (B.O.B 14 MINUTES) NO BB

Recovered 760 ft. of GAS IN PIPE
 Recovered 40 ft. of MCGO (15% MUD 30% GAS 55% OIL)
 Recovered _____ ft. of _____
 Recovered _____ ft. of _____

Recovered _____ ft. of _____	Price Job
Recovered _____ ft. of _____	Other Charges
Remarks: <u>TOTAL FLUID REC : 40' IN DRILL PIPE,</u>	Insurance
_____	Total

Time Set Packer(s) 3:00 P.M. A.M. P.M. Time Started Off Bottom 6:45 P.M. A.M. P.M. Maximum Temperature 92
 Initial Hydrostatic Pressure (A) 1223 P.S.I.
 Initial Flow Period Minutes 30 (B) 34 P.S.I. to (C) 30 P.S.I.
 Initial Closed In Period Minutes 45 (D) 912 P.S.I.
 Final Flow Period Minutes 60 (E) 30 P.S.I. to (F) 42 P.S.I.
 Final Closed In Period Minutes 90 (G) 912 P.S.I.
 Final Hydrostatic Pressure (H) 1177 P.S.I.

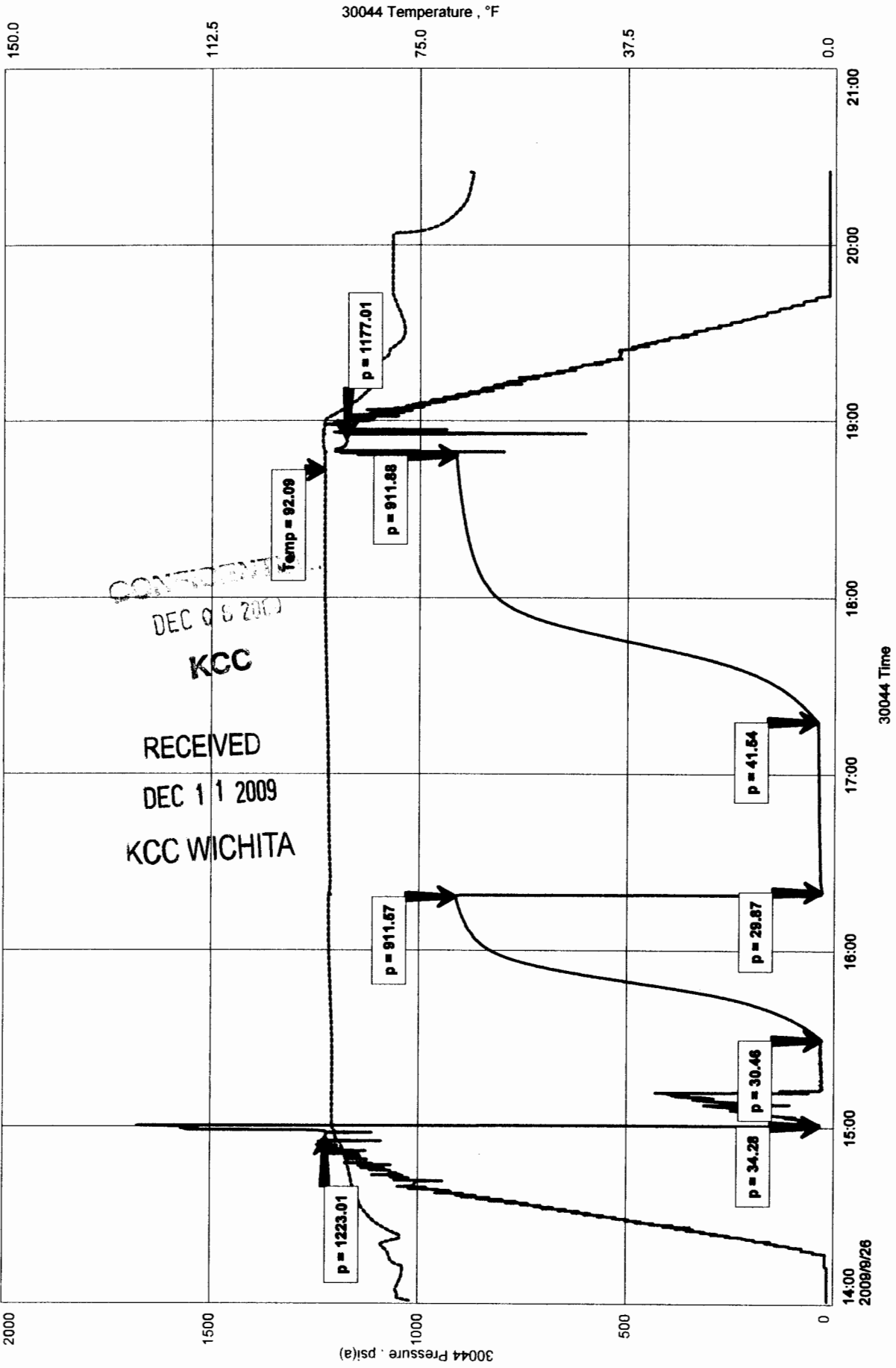
Diamond Testing shall not be liable for damages of any kind to the property or personnel of the one for whom a test is made or for any loss suffered or sustained, directly or indirectly, through the use of its equipment, or its statement or opinion concerning the result of any test. Tools lost or damaged in the hole shall be paid for at cost by the party for whom the test is made.

23-12-15W

NE Y 2-23
 Formation: TOPEKA
 Job Number: D617

BUFFALO RESOURCES
 Start Test Date: 2009/09/26
 Final Test Date: 2009/09/26

NE Y 2-23



J

GENERAL INFORMATION

Client Information:

Company: BUFFALO RESOURCES LLC
Contact: WRAY VALENTINE
Phone: Fax: e-mail:

Site Information:

Contact: CURTIS COVEY
Phone: Fax: e-mail:

Well Information:

Name: NEY 2-23
Operator: BUFFALO RESOURCES LLC
Location-Downhole:
Location-Surface: S23/12S/15W RUSSELL CTY

CONFIDENTIAL
DEC 08 2009
KCC

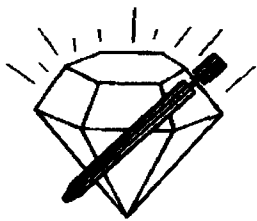
RECEIVED
DEC 11
KCC WICHITA

Test Information:

Company:	DIAMOND TESTING	Job Number:	D619
Representative:	JOHN RIEDL	Start Time:	20:10:00
Supervisor:	CURTIS COVEY	End Time:	03:00:00
Test Type:		Prepared By:	JOHN RIEDL
Test Unit:		Qualified By:	CURTIS COVEY
Start Date:	2009/09/28		
End Date:	2009/09/29		
Report Date:	2009/09/29		

Remarks:

RECOVERY: 60' GAS IN PIPE
300' GAS CUT OIL



DIAMOND TESTING
 P.O. Box 157
 HOISINGTON, KANSAS 67544
 (620) 653-7550 • (800) 542-7313

ON 15:00 9/27/09
 OFF 21:45 9/27/09

DRILL-STEM TEST TICKET
 FILE:ney2-23dst2

Company BUFFALO RESOURCES Lease & Well No. NEY 2-23
 Contractor DUKE DRILLING RIG 8 Charge to BUFFALO RESOURCES
 Elevation _____ Formation LKC Effective Pay _____ Ft. Ticker No. D618
 Date 9/27/09 Sec. 23 Twp. 12 S Range 15 W County RUSSELL State KANSAS
 Test Approved By CURTIS COVEY Diamond Representative JOHN C. RIEDL

Formation Test No. 2 Interval Tested from 2824 ft. to 2890 ft. Total Depth 2890 ft.
 Packer Depth 2819 ft. Size 6 3/4 in. Packer Depth _____ ft. Size _____ in.
 Packer Depth 2824 ft. Size 6 3/4 in. Packer Depth _____ ft. Size _____ in.

Depth of Selective Zone Set _____

Top Recorder Depth (Inside) 2827 ft. Recorder Number 30044 Cap. 6000 P.S.I.
 Bottom Recorder Depth (Outside) 2887 ft. Recorder Number 11017 Cap. 4000 P.S.I.
 Below Straddle Recorder Depth _____ ft. Recorder Number _____ Cap. _____ P.S.I.

Mud Type CHEMICAL 54 Drill Collar Length 0 ft. I.D. 2 1/4 in.
 Weight 8.9 Water Loss 7.8 cc. Weight Pipe Length 0 ft. I.D. 2 7/8 in.
 Chlorides KCC 2400 P.P.M. Drill Pipe Length 2798 ft. I.D. 3 1/2 in.
 Jars: Make BOWEN Serial Number #2 Test Tool Length 26 ft. Tool Size 3 1/2-1F in.
 Did Well Flow? NO Reversed Out NO Anchor Length 66 ft. Size 4 1/2-FH in.
 Main Hole Size 7 7/8 Tool Joint Size 4 1/2 XH in. Surface Choke Size 1 in. Bottom Choke Size 5/8 in.

Blow: 1st Open: STRONG (SLOW BUILD TO 8") NO BB
 2nd Open: STRONG (B.O.B 50 MINUTES) NO BB

Recovered 300 ft. of GAS IN PIPE
 Recovered 60 ft. of SLO+WCGM (3%OIL 5%WATE 15%GAS 77%MUD)
 Recovered 180 ft. of MW (15%MUD 85%WATER) CHLORIDES 36,000Ppm RES .24@60 DEGREES

Recovered _____ ft. of _____	RECEIVED DEC 11 2009 KCC WICHITA	Price Job
Recovered _____ ft. of _____		Other Charges
Remarks: <u>TOTAL FLUID REC : 240' IN DRILL PIPE,</u>		Insurance
_____		Total

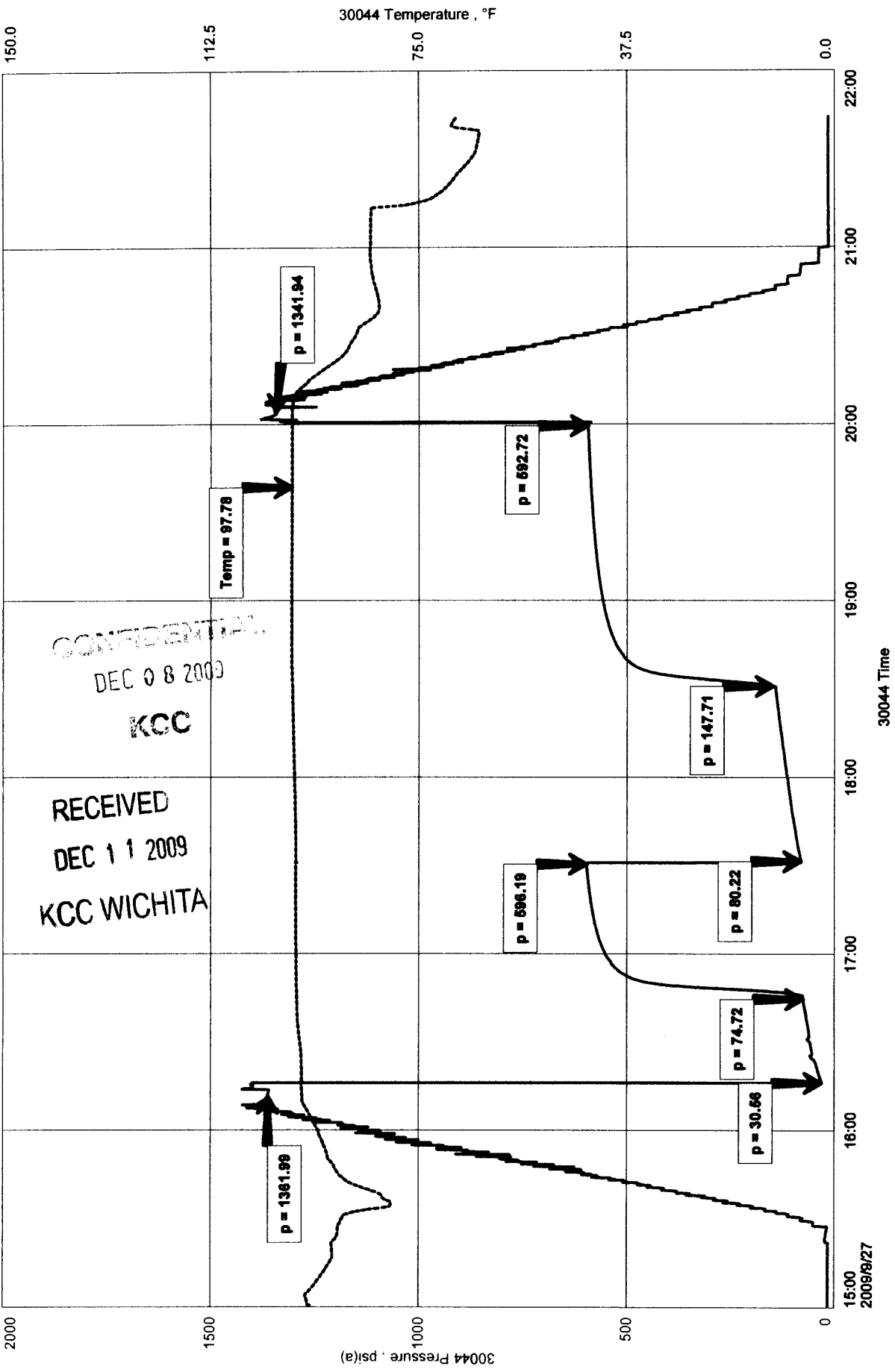
Time Set Packer(s) 4:15 P.M A.M. P.M. Time Started Off Bottom 8:00 P.M A.M. P.M. Maximum Temperature 98
 Initial Hydrostatic Pressure (A) 1362 P.S.I.
 Initial Flow Period Minutes 30 (B) 31 P.S.I. to (C) 75 P.S.I.
 Initial Closed In Period Minutes 45 (D) 596 P.S.I.
 Final Flow Period Minutes 60 (E) 80 P.S.I. to (F) 148 P.S.I.
 Final Closed In Period Minutes 90 (G) 593 P.S.I.
 Final Hydrostatic Pressure (H) 1342 P.S.I.

Diamond Testing shall not be liable for damages of any kind to the property or personnel of the one for whom a test is made or for any loss suffered or sustained, directly or indirectly, through the use of its equipment, or its statement or opinion concerning the result of any test. Tools lost or damaged in the hole shall be paid for at cost by the party for whom the test is made.

BUFFALO RESOURCES
Start Test Date: 2009/09/27
Final Test Date: 2009/09/27

NEY 2-23
Formation: LKC 2824 TO 2890
Job Number: D618

NEY 2-23



CONFIDENTIAL
DEC 08 2009
KCC
RECEIVED
DEC 11 2009
KCC WICHITA

GENERAL INFORMATION

Client Information:

Company: BUFFALO RESOURCES

Contact: DARREN PATTERSON

Phone: Fax: e-mail:

Site Information:

Contact: CURTIS COVEY

Phone: Fax: e-mail:

Well Information:

Name: NEY 2-23

Operator: BUFFALO RESOURCES

Location-Downhole:

Location-Surface:

CONFIDENTIAL
DEC 08 2009
KCC

RECEIVED
DEC 11 2009
KCC WICHITA

Test Information:

Company: DIAMOND TESTING

Representative: JOHN RIEDL

Supervisor: CURTIS COVEY

Test Type: Job Number: D618

Test Unit:

Start Date: 2009/09/27 Start Time: 15:00:00

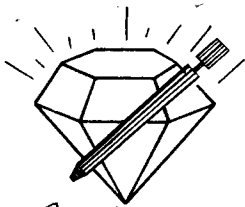
End Date: 2009/09/27 End Time: 21:45:00

Report Date: 2009/09/27 Prepared By: JOHN RIEDL

Qualified By: CURTIS COVEY

Remarks:

RECOVERY: 300' GAS IN PIPE
60' SLIGHTLY OIL+WATER CUT GASSY MUD
180' MUDDY WATER



DIAMOND TESTING
 P.O. Box 157
 HOISINGTON, KANSAS 67544
 (800) 542-7313

TIME ON: 20:10 9/27/09
 TIME OFF: 3:06 9/27/09

DRILL-STEM TEST TICKET
 FILE: NE 2-23 DST 3

Company BUFFALO RESOURCES Lease & Well No. NE 2-23
 Contractor DUKE DRILL RIGS Charge to BUFFALO RESOURCES
 Elevation 1685 KB Formation ARBUCKLE Effective Pay _____ Ft. Ticket No. D619
 Date 9/27/09 Sec. 23 Twp. 12 S Range 15 W County RUSSELL State KANSAS
 Test Approved By Curt Conway (Geo for Buffalo) Diamond Representative JOHN C. RIEDL

Formation Test No. 3 Interval Tested from 3094 ft. to 3135 ft. Total Depth 3135 ft.
 Packer Depth 3089 ft. Size 6 3/4 in. Packer depth _____ ft. Size 6 3/4 in.
 Packer Depth 3094 ft. Size 6 3/4 in. Packer depth _____ ft. Size 6 3/4 in.
 Depth of Selective Zone Set _____

Top Recorder Depth (Inside) 3097 ft. Recorder Number 30044 Cap. 6000 P.S.I.
 Bottom Recorder Depth (Outside) 3132 ft. Recorder Number 11017 Cap. 4000 P.S.I.
 Below Straddle Recorder Depth _____ ft. Recorder Number _____ Cap. _____ P.S.I.

Mud Type CHEMICAL Viscosity 5.5 Drill Collar Length 0 ft. I.D. 2 1/4 in.
 Weight 8.6 Water Loss 3,000 cc. Weight Pipe Length 0 ft. I.D. 2 7/8 in.
 Chlorides 3,000 P.P.M. Drill Pipe Length 3068 ft. I.D. 3 1/2 in.
 Jars: Make STERLING Serial Number 42 Test Tool Length 26 ft. Tool Size 3 1/2-IF in.
 Did Well Flow? NO Reversed Out NO Anchor Length 41 ft. Size 4 1/2-FH in.
 Main Hole Size 7 7/8 Tool Joint Size 4 1/2 in. Surface Choke Size 1 in. Bottom Choke Size 5/8 in.

Blow: 1st Open: STRONG (BOB 25 MINUTES)
 2nd Open: STRONG (BOB 23 MINUTES)

Recovered 60 ft. of GAS IN PIPE
 Recovered 300 ft. of GAS CUT OIL (15% GAS 85% OIL) 28 @ 60° GRAVITY
 Recovered 20 ft. of SLMUDFGASCUTOIL (57% MUD 10% GAS 85% OK)

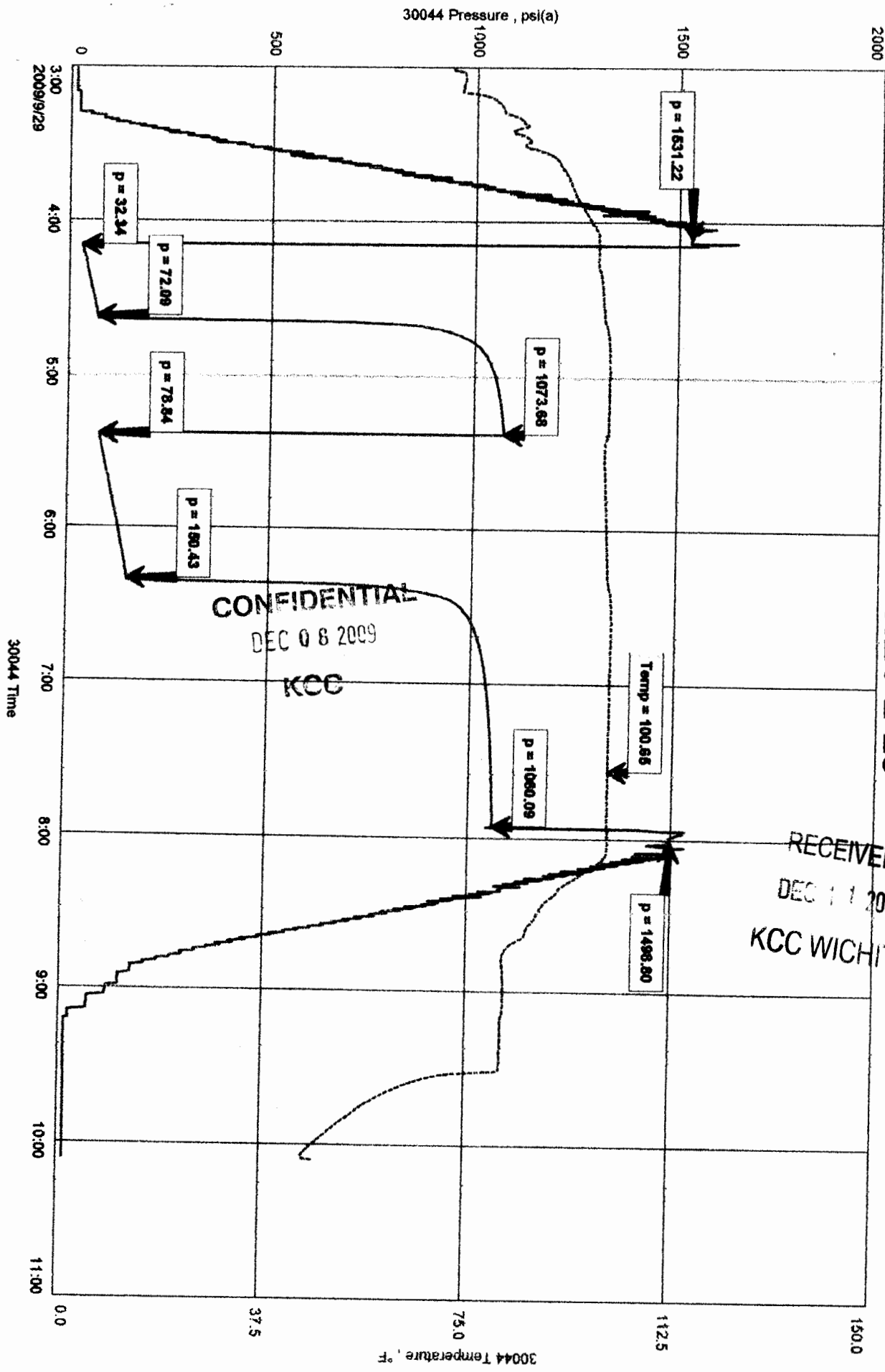
Recovered _____ ft. of _____	Price Job
Recovered _____ ft. of _____	Other Charges <u>JARS SFJT</u>
Recovered _____ ft. of _____	Insurance
Remarks: <u>TOOL SAMPLE (10% GAS 90% OIL)</u> <u>TOTAL FLUID REC.: 320' IN DRILL PIPE</u>	FROM HOLE <u>50</u> TO HOLE <u>50</u> Total <u>TOTAL 100</u>

Time Set Packer(s) 9:15 (A.M.) Time Started Off Bottom 1:00 (A.M.) Maximum Temperature 101°

Initial Hydrostatic Pressure..... (A) 1531 P.S.I.
 Initial Flow Period..... Minutes 30 (B) 32 P.S.I. to (C) 72 P.S.I.
 Initial Closed In Period..... Minutes 45 (D) 1074 P.S.I.
 Final Flow Period..... Minutes 60 (E) 79 P.S.I. to (F) 150 P.S.I.
 Final Closed In Period..... Minutes 90 (G) 1060 P.S.I.
 Final Hydrostatic Pressure..... (H) 1498 P.S.I.

Diamond Testing shall not be liable for damages of any kind to the property or personnel of the one for whom a test is made or for any loss suffered or sustained, directly or indirectly, through the use of its equipment, or its statement or opinion concerning the result of any test. Tools lost or damaged in the hole shall be paid for at cost by the party for whom the test is made.

NEY 2-23



RECEIVED
DEC 11 2009
KCC WICHITA

CONFIDENTIAL
DEC 08 2009
KCC

GENERAL INFORMATION

Client Information:

Company: BUFFALO RESOURCES

Contact:

Phone: Fax: e-mail:

Site Information:

Contact: CURTIS COVEY

Phone: Fax: e-mail:

Well Information:

Name: NEY 2-23

Operator: BUFFALO RESOURCES

Location-Downhole:

Location-Surface: S23/12S/15W RUSSELL CTY

Test Information:

Company: DIAMOND TESTING

Representative: JOHN RIEDL

Supervisor: CURTIS COVEY

Test Type: Job Number: D617

Test Unit:

Start Date: 2009/09/26 Start Time: 14:00:00

End Date: 2009/09/26 End Time: 20:15:00

Report Date: 2009/09/26 Prepared By: JOHN RIEDL

Qualified By: CURTIS COVEY

Remarks:

RECOVERY: 760' GAS IN PIPE
40' MUD CUT GASSY OIL

CONFIDENTIAL
DEC 08 2009
KCC

RECEIVED
DEC 11 2009
KCC WICHITA