

OCT 11 1972

31-12-17W

KANSAS DRILLERS LOG

State Geological Survey
WICHITA, BRANCH

S. 31 T. 12S R. 17 W

Loc. C S/2 SE SE

County Ellis

API No. 15 — 051 — 20843
County Number

Operator
MESSMAN-RINEHART OIL COMPANY

Address
1432 Wichita Plaza, Wichita, Kansas 67202

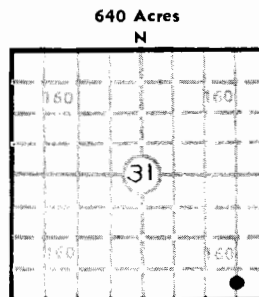
Well No. 3 Lease Name KARLIN

Footage Location
330 feet from (N) (S) line 660' feet from (E) (W) line SE/4

Principal Contractor Red Tiger Drilling Geologist George Klein

Spud Date August 14, 1972 Total Depth 3629' P.B.T.D.

Date Completed September 16, 1972 Oil Purchaser



640 Acres N

Elev.: Gr. 2071

DF 2073 KB 2076

CASING RECORD

Report of all strings set — surface, intermediate, production, etc.

Purpose of string	Size hole drilled	Size casing set (in O.D.)	Weight lbs/ft.	Setting depth	Type cement	Sacks	Type and percent additives
Surface Csg	12-1/4"	8-5/8	28	298	Common	220	2% Gel 3% Calc Chloride
Oil string	7-7/8"	4-1/2	9.5	3624	Common	125	1 sack Gel

LINER RECORD

PERFORATION RECORD

Top, ft.	Bottom, ft.	Sacks cement	Shots per ft.	Size & type	Depth interval
					Open hole (Arbuckle) 3624-29

TUBING RECORD

Size	Setting depth	Packer set at

ACID, FRACTURE, SHOT, CEMENT SQUEEZE RECORD

Amount and kind of material used	Depth interval treated
600 Gallons	3624-29

INITIAL PRODUCTION

Date of first production September 16, 1972	Producing method (flowing, pumping, gas lift, etc.) Pumping			
RATE OF PRODUCTION PER 24 HOURS	Oil 60 bbls.	Gas -0- MCF	Water Trace bbls.	Gas-oil ratio CFPB
Disposition of gas (vented, used on lease or sold)			Producing interval(s)	

INSTRUCTIONS: As provided in KCC Rule 82-2-125, within 90 days after completion of a well, one completed copy of this Drillers Log shall be transmitted to the State Geological Survey of Kansas, 4150 Monroe Street, Wichita, Kansas 67209. Copies of this form are available from the Conservation Division, State Corporation Commission, 3830 So. Meridian (P.O. Box 17027), Wichita, Kansas 66217. Phone AC 316-522-2206. If confidential custody is desired, please note Rule 82-2-125. Drillers Logs will be on open file in the Oil and Gas Division, State Geological Survey of Kansas, Lawrence, Kansas 66044.

Operator MESSMAN-RINEHART OIL COMPANY

DESIGNATE TYPE OF COMP.: OIL, GAS, DRY HOLE, SWDW, ETC.: Oil Well

Well No.

3

Lease Name

KARLIN

S 31 T 12S R 17 E W

WELL LOG

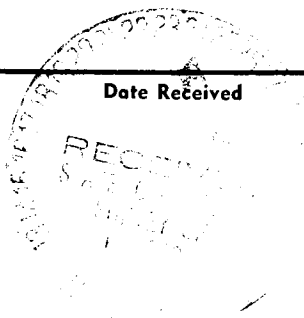
Show all important zones of porosity and contents thereof; cored intervals, and all drill-stem tests, including depth interval tested, cushion used, time tool open, flowing and shut-in pressures, and recoveries.

SHOW GEOLOGICAL MARKERS, LOGS RUN, OR OTHER DESCRIPTIVE INFORMATION.

FORMATION DESCRIPTION, CONTENTS, ETC.	TOP	BOTTOM	NAME	DEPTH
Driller's Log and Drill Stem Tests Attached			Anhydrite Heenber Toronto Lansing *Arbuckle	1298' 3305' 3327' 3352' 3619'
* Sample tap-log did not reach Arbuckle			30 BOPD	NW/ art.

USE ADDITIONAL SHEETS, IF NECESSARY, TO COMPLETE WELL RECORD.

Date Received



J. George Klein
J. George Klein Signature

Geologist

Title

October 9, 1972

Date