

PLOTTED
P. E. Jamison

GULF OIL CORP.
A.J. Koerner No. 2.

SEC. 11 T. 12 R. 18W
NW NE SW

Total Depth. 3677'
Comm. 8-11-37 Comp. 9-9-37
Shot or Treated. 2000 Gals.
Contractor.
Issued. 12-25-37

County. Ellis



CASING:
10³/₄" 1368'
6" 3666'

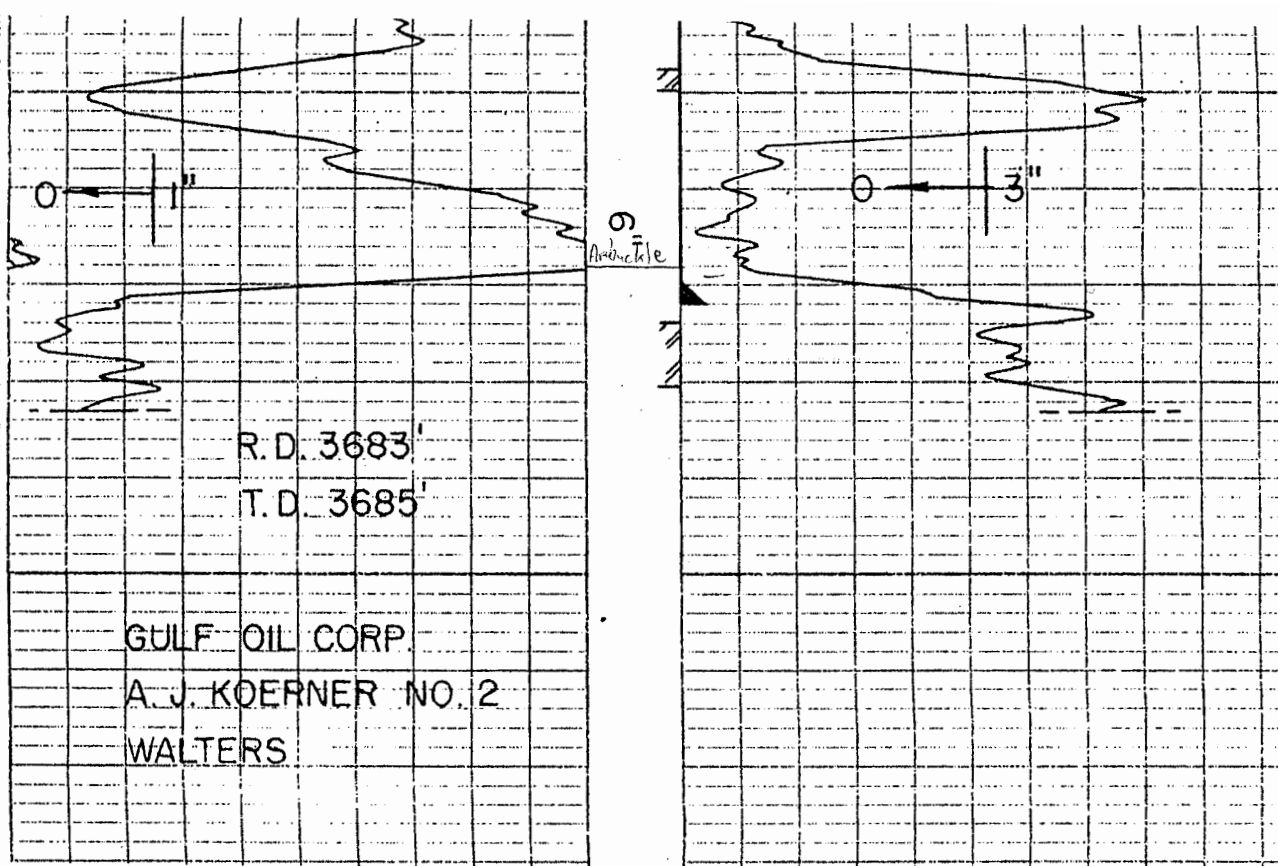
DEC 25 1937

Elevation.

Production. Pot. 1100 B.
No wtr.

Figures Indicate Bottom of Formations.

shale	50	lime lgt hrd	2530
shale sdy	180	shale red sft	2540
shale & shells	190	limo lgt hrd	2559
shale blue	220	lime brkn lgt	2574
sand	270	shale red sft	2583
shale blue	320	lime lgt hrd	2606
sand lgt	585	shale blue mod	2613
shale drk	690	lime lgt hrd	2639
shale sdy	734	lime lgt med	2679
sand	830	lime brkn lgt	2710
shale blue sticky	882	lime lgt hrd	2782
shale blue	906	lime brkn	2812
sand	1055	lime lgt hrd	2831
shale lgt	1103	lime brkn drk	2850
shale sdy lgt	1207	lime drk hrd	2859
shale & lime shells	1247	SLM Corr. 2864	
shale red med	1270	lime brkn grey	2925
shale red	1348	lime grey hrd	2942
lime lgt hrd	1394	lime lgt hrd	2965
shale blue sft	1424	shale drk sft	2972
lime lgt hrd	1440	lime brkn drk	3029
shale red sft	1493	lime drk med	3080
shale red med	1508	lime brkn drk	3110
lime sdy med	1550	shale lgt sft	3117
shale sholls med	1568	lime grey hrd	3128
lime brkn mod	1637	lime grey hrd drk	3139
shale red mod	1650	shale drk & lime shells	3158
shale blue sticky	1702	lime brkn grey	3185
lime lgt hrd	1716	lime lgt hrd	3255
shale blue sft	1735	lime grey hrd	3270
shale red sft	1760	lime lgt hrd	3427
slate drk sft	1824	lime grey med	3436
shale drk sft	1896	lime lgt med	3498
shale, salt & lime shells,		lime lgt hrd	3527
med	1936	lime lgt grey hrd	3554
salt & brkn lime med	1964	lime grey med	3595
shale blue med	1990	lime lgt hrd	3640
lime grey hrd	2034	SLM Corr 3643-3640	
lime lgt hrd	2094	lime lgt hrd	3645
lime grey hrd	2172	lime lgt	3652
lime lgt hrd	2202	shale drk	3658
shale red sft	2210	oring grey shalo	3670
lime lgt hrd	2251	oring lime	3677
lime grey hrd	2335	Total Depth.	
shale red med	2350		
lime drk med	2362	Siliceous limo 3666-3677	
lime grey hrd	2385		
shale lgt sft	2390		
lime grey hrd	2470		
shale drk mod	2475		
lime lgt mod	2494		



core 3656 1/2 - 69. Recovered 9'

3656 1/2 - 58 1/2 - Simpson green shale & dolomite

3658 1/2 - 3664 1/2 - green shale

3664 1/2 - 3666 - green shale, sand & pyrite

3666 - 3666 1/2 - light gray cherty dolomite and a little green shale

3667 - 3669 - light brown dolomite with some chert and pyrite, spotted porosity and oil saturation

3669 - 3672 - very little porosity, hole filled 1250' with oil

3672 - 3675 - Recovered 1 1/2' of white siliceous lime, very little porosity

3675 - 3677 - Recovered 1' hard white lime, no porosity. Hole filled 2900' oil in 8 hrs.

Set 6" csg to 3666 w/ 50 SXS

Acid 2000G - JF 1100 B0, NW

10-25-37 Acid 3000G - Jerome J P To 1358 barrels of Oil, NW

12-9-52 Production Test 3.1 BOPD + 45.5 BW

11-21-53 Cased hole log - Lane - wells.

7-13-54 Plugged well

9-3-69 Reentered & Recompleted 95 Cedar Hill SWO. (A.J. Koerner 2
in database - DRL 1-2-2012)