

**TRILOBITE  
TESTING, INC.**

## DRILL STEM TEST REPORT

Prepared For: **Sandlin Oil Corporation**

621 17th St  
Ste 2055  
Denver CO 80293-2001

ATTN: Gary Sandlin

### **Karlin #4**

### **15-12s-18w Ellis,KS**

Start Date: 2011.12.13 @ 03:45:14

End Date: 2011.12.13 @ 08:39:08

Job Ticket #: 46015                      DST #: 1

**RECEIVED**

**FEB 23 2012**

**KCC WICHITA**

Trilobite Testing, Inc  
PO Box 362 Hays, KS 67601  
ph: 785-625-4778 fax: 785-625-5620

Printed: 2011.12.15 @ 15:07:26

Sandlin Oil Corporation  
15-12s-18w Ellis,KS  
Karlin #4  
DST # 1  
Arbuckle  
2011.12.13



**TRILOBITE  
TESTING, INC**

## DRILL STEM TEST REPORT

Sandlin Oil Corporation  
621 17th St  
Ste 2055  
Denver CO 80293-2001  
ATTN: Gary Sandlin

**15-12s-18w Ellis,KS**

**Karlin #4**

Job Ticket: 46015

**DST#: 1**

Test Start: 2011.12.13 @ 03:45:14

### GENERAL INFORMATION:

Formation: **Arbuckle**

Deviated: **No** Whipstock: **ft (KB)**

Time Tool Opened: 05:12:09

Time Test Ended: 08:39:08

Test Type: **Conventional Bottom Hole (Initial)**

Tester: **Ray Schwager**

Unit No: **42**

Interval: **3646.00 ft (KB) To 3710.00 ft (KB) (TVD)**

Total Depth: **3710.00 ft (KB) (TVD)**

Hole Diameter: **7.88 inches** Hole Condition: **Fair**

Reference Elevations: **2176.00 ft (KB)**

**2171.00 ft (CF)**

**KB to GR/CF: 5.00 ft**

**Serial #: 6625**

**Inside**

Press@RunDepth: **21.94 psig @ 3650.00 ft (KB)**

Capacity: **8000.00 psig**

Start Date: **2011.12.13**

End Date:

**2011.12.13**

Last Calib.: **2011.12.13**

Start Time: **03:45:14**

End Time:

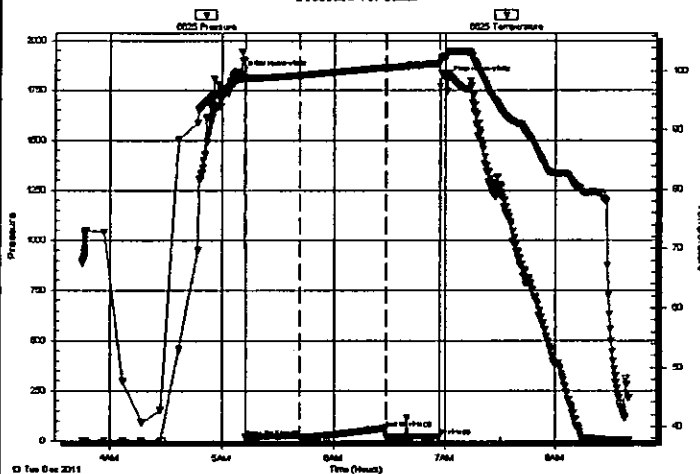
**08:39:08**

Time On Btm: **2011.12.13 @ 05:09:39**

Time Off Btm: **2011.12.13 @ 07:00:09**

TEST COMMENT: 30-IFP-w k bl 1/4"to 1/2"bl  
45-ISIP-no bl  
30-FFP-no bl,flushed tool  
pulled tool

Pressure vs. Time



### PRESSURE SUMMARY

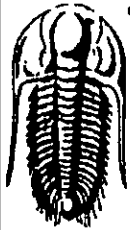
Time (Min.)	Pressure (psig)	Temp (deg F)	Annotation
0	1831.97	98.48	Initial Hydro-static
3	19.81	98.61	Open To Flow (1)
32	21.94	99.18	Shut-In(1)
78	60.21	100.49	End Shut-In(1)
79	20.46	100.48	Open To Flow (2)
107	22.80	101.29	Shut-In(2)
111	1799.73	102.48	Final Hydro-static

### Recovery

Length (ft)	Description	Volume (bbl)
5.00	Mud w/show of oil	0.07

### Gas Rates

	Choke (Inches)	Pressure (psig)	Gas Rate (Mcf/d)



**TRILOBITE  
TESTING, INC**

## DRILL STEM TEST REPORT

**TOOL DIAGRAM**

Sandlin Oil Corporation  
621 17th St  
Ste 2055  
Denver CO 80293-2001  
ATTN: Gary Sandlin

**15-12s-18w Ells,KS**  
**Karlin #4**  
Job Ticket: 46015      **DST#: 1**  
Test Start: 2011.12.13 @ 03:45:14

### Tool Information

Drill Pipe:	Length: 3637.00 ft	Diameter: 3.80 inches	Volume: 51.02 bbl	Tool Weight: 2200.00 lb
Heavy Wt. Pipe:	Length: 0.00 ft	Diameter: 0.00 inches	Volume: 0.00 bbl	Weight set on Packer: 25000.00 lb
Drill Collar:	Length: 0.00 ft	Diameter: 0.00 inches	Volume: 0.00 bbl	Weight to Pull Loose: 55000.00 lb
			<u>Total Volume: 51.02 bbl</u>	Tool Chased 0.00 ft
Drill Pipe Above KB:	12.00 ft			String Weight: Initial 45000.00 lb
Depth to Top Packer:	3646.00 ft			Final 45000.00 lb
Depth to Bottom Packer:	ft			
Interval between Packers:	31.00 ft			
Tool Length:	52.00 ft			
Number of Packers:	2	Diameter: 6.75 inches		

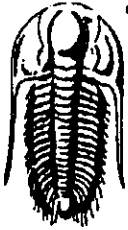
Tool Comments:

Tool Description	Length (ft)	Serial No.	Position	Depth (ft)	Accum. Lengths
------------------	-------------	------------	----------	------------	----------------

Change Over Sub	1.00			3626.00	
Shut In Tool	5.00			3631.00	
Hydraulic tool	5.00			3636.00	
Packer	5.00			3641.00	21.00      Bottom Of Top Packer
Packer	5.00			3646.00	
Stubb	1.00			3647.00	
Perforations	3.00			3650.00	
Recorder	0.00	6625	Inside	3650.00	
Recorder	0.00	8700	Outside	3650.00	
Perforations	24.00			3674.00	
Bullnose	3.00			3677.00	31.00      Bottom Packers & Anchor

**Total Tool Length: 52.00**

**RECEIVED  
FEB 23 2012  
KCC WICHITA**



**TRILOBITE  
TESTING, INC**

**DRILL STEM TEST REPORT**

**FLUID SUMMARY**

Sandlin Oil Corporation

15-12s-18w Ellis,KS

621 17th St  
Ste 2055  
Denver CO 80293-2001  
ATTN: Gary Sandlin

**Karlin #4**  
Job Ticket: 46015      **DST#: 1**  
Test Start: 2011.12.13 @ 03:45:14

**Mud and Cushion Information**

Mud Type: Gel Chem	Cushion Type:	Oil API:	deg API
Mud Weight: 9.00 lb/gal	Cushion Length: ft	Water Salinity:	ppm
Viscosity: 58.00 sec/qt	Cushion Volume: bbl		
Water Loss: 8.74 in <sup>3</sup>	Gas Cushion Type:		
Resistivity: ohm.m	Gas Cushion Pressure: psig		
Salinity: 4500.00 ppm			
Filter Cake: 1.00 inches			

**Recovery Information**

Recovery Table

Length ft	Description	Volume bbl
5.00	Mud w/show of oil	0.070

Total Length: 5.00 ft      Total Volume: 0.070 bbl  
 Num Fluid Samples: 0      Num Gas Bombs: 0      Serial #:  
 Laboratory Name:      Laboratory Location:  
 Recovery Comments:

Serial #: 6625

Inside

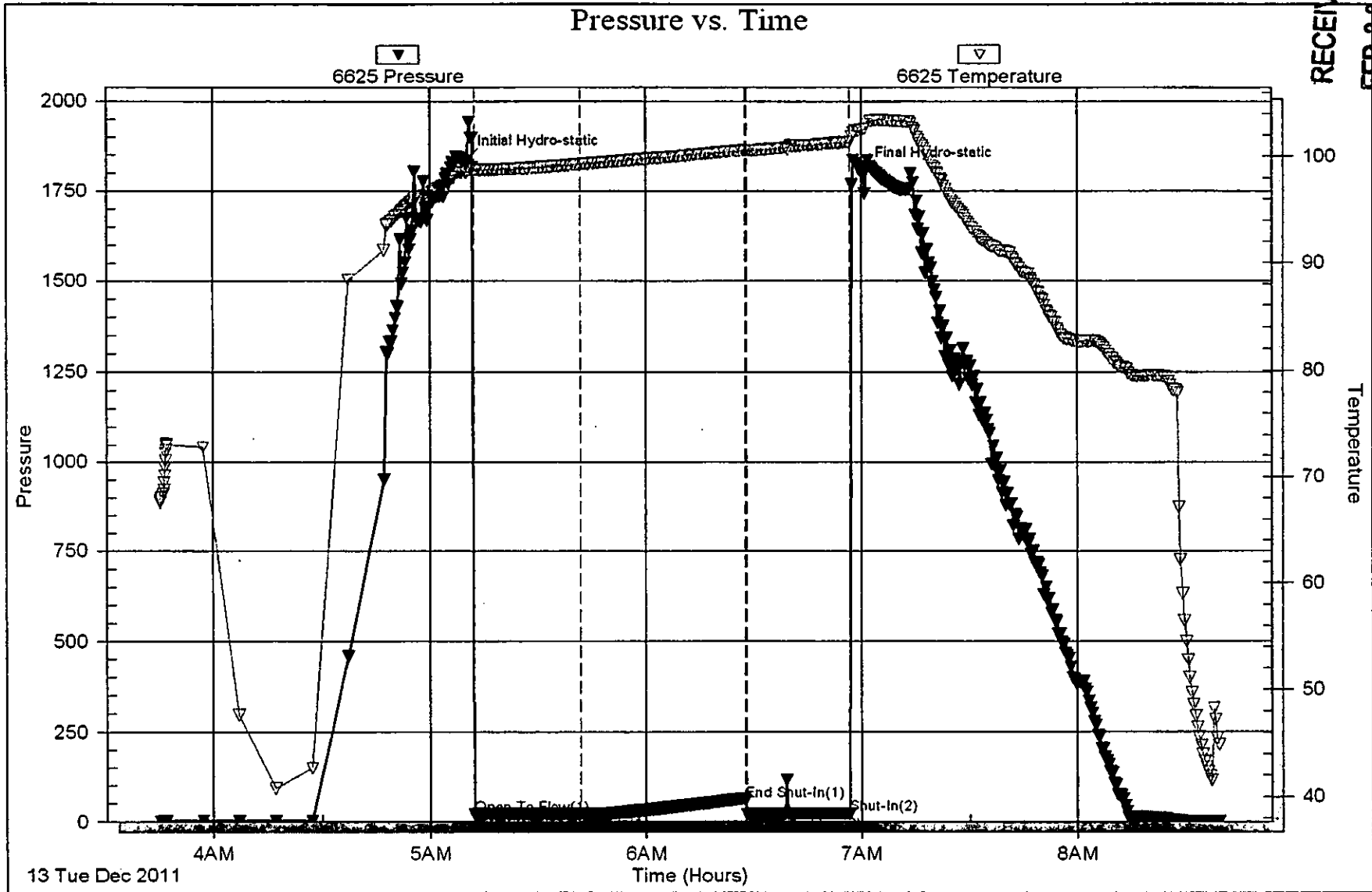
Sandlin Oil Corporation

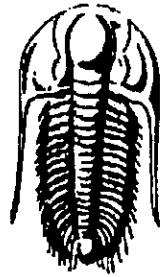
Karlin #4

DST Test Number: 1

RECEIVED  
FEB 29 2012

KCC WICHITA





**TRILOBITE  
TESTING, INC.**

## DRILL STEM TEST REPORT

Prepared For: **Sandlin Oil Corporation**

621 17th St  
Ste 2055  
Denver CO 80293-2001

ATTN: Gary Sandlin

**Karlin #4**

**15-12s-18w Ellis,KS**

Start Date: 2011.12.13 @ 21:35:32

End Date: 2011.12.14 @ 04:11:56

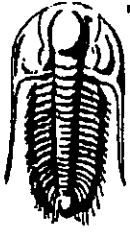
Job Ticket #: 46016                      DST #: 2

Trilobite Testing, Inc  
PO Box 362 Hays, KS 67601  
ph: 785-625-4778 fax: 785-625-5620

**RECEIVED  
FEB 23 2012  
KCC WICHITA**

Printed: 2011.12.15 @ 15:07:47

Sandlin Oil Corporation  
15-12s-18w Ellis,KS  
Karlin #4  
DST # 2  
Arbuckle  
2011.12.13



**TRILOBITE  
TESTING, INC**

# DRILL STEM TEST REPORT

Sandlin Oil Corporation  
621 17th St  
Ste 2055  
Denver CO 80293-2001  
ATTN: Gary Sandlin

**15-12s-18w Ellis,KS**

**Karlin #4**

Job Ticket: 46016

**DST#: 2**

Test Start: 2011.12.13 @ 21:35:32

## GENERAL INFORMATION:

Formation: **Arbuckle**

Deviated: **No** Whipstock: **ft (KB)**

Time Tool Opened: 23:38:27

Time Test Ended: 04:11:56

Test Type: **Conventional Straddle (Reset)**

Tester: **Ray Schwager**

Unit No: **42**

Interval: **3712.00 ft (KB) To 3726.00 ft (KB) (TVD)**

Total Depth: **3780.00 ft (KB) (TVD)**

Hole Diameter: **7.88 inches** Hole Condition: **Fair**

Reference Elevations: **2176.00 ft (KB)**

**2171.00 ft (CF)**

KB to GR/CF: **5.00 ft**

**Serial #: 6625**

**Inside**

Press@RunDepth: **44.58 psig @ 3717.00 ft (KB)**

Start Date: **2011.12.13**

End Date:

**2011.12.14**

Capacity: **8000.00 psig**

Last Calib.: **2011.12.14**

Start Time: **21:35:32**

End Time:

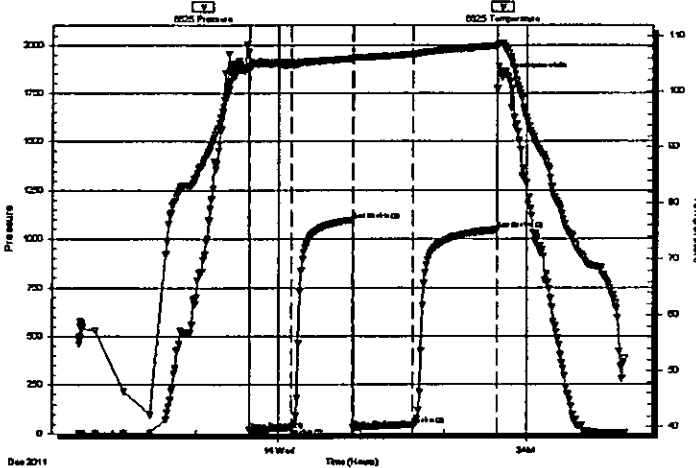
**04:11:56**

Time On Btm: **2011.12.13 @ 23:34:57**

Time Off Btm: **2011.12.14 @ 02:42:26**

TEST COMMENT: 30-IFP-w k bl 1/2" to 2 1/4" bl  
45-ISIP-no bl  
45-FFP-w k bl surface to 1" bl  
60-FSIP-no bl

Pressure vs. Time



## PRESSURE SUMMARY

Time (Min.)	Pressure (psig)	Temp (deg F)	Annotation
0	1858.17	103.84	Initial Hydro-static
4	17.81	104.34	Open To Flow (1)
34	27.83	104.77	Shut-In(1)
79	1096.56	105.90	End Shut-In(1)
80	29.56	106.07	Open To Flow (2)
122	44.58	106.68	Shut-In(2)
184	1045.31	108.22	End Shut-In(2)
188	1835.62	108.72	Final Hydro-static

## Recovery

Length (ft)	Description	Volume (bbl)
60.00	OO	0.84
30.00	MO 30%M70%O	0.42

\* Recovery from multiple tests

## Gas Rates

	Choke (inches)	Pressure (psig)	Gas Rate (Mcf/d)





**TRILOBITE  
TESTING, INC**

## DRILL STEM TEST REPORT

TOOL DIAGRAM

Sandlin Oil Corporation

15-12s-18w Ellis,KS

621 17th St  
Ste 2055  
Denver CO 80293-2001  
ATTN: Gary Sandlin

**Karlin #4**  
Job Ticket: 46016      DST#: 2  
Test Start: 2011.12.13 @ 21:35:32

### Tool Information

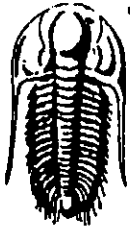
Drill Pipe:	Length: 3710.00 ft	Diameter: 3.80 inches	Volume: 52.04 bbl	Tool Weight: 2200.00 lb
Heavy Wt. Pipe:	Length: 0.00 ft	Diameter: 0.00 inches	Volume: 0.00 bbl	Weight set on Packer: 25000.00 lb
Drill Collar:	Length: 0.00 ft	Diameter: 0.00 inches	Volume: 0.00 bbl	Weight to Pull Loose: 60000.00 lb
			<u>Total Volume: 52.04 bbl</u>	Tool Chased: 0.00 ft
Drill Pipe Above KB:	19.00 ft			String Weight: Initial 46000.00 lb
Depth to Top Packer:	3712.00 ft			Final 47000.00 lb
Depth to Bottom Packer:	3726.00 ft			
Interval between Packers:	14.00 ft			
Tool Length:	93.00 ft			
Number of Packers:	3	Diameter: 6.75 inches		

Tool Comments:

### Tool Description

Tool Description	Length (ft)	Serial No.	Position	Depth (ft)	Accum. Lengths
Change Over Sub	1.00			3692.00	
Shut In Tool	5.00			3697.00	
Hydraulic tool	5.00			3702.00	
Packer	5.00			3707.00	21.00      Bottom Of Top Packer
Packer	5.00			3712.00	
Stubb	1.00			3713.00	
Perforations	4.00			3717.00	
Recorder	0.00	6625	Inside	3717.00	
Recorder	0.00	8700	Outside	3717.00	
Perforations	5.00			3722.00	
Blank Off Sub	1.00			3723.00	
Blank Spacing	3.00			3726.00	14.00      Tool Interval
Packer	5.00			3731.00	
Stubb	1.00			3732.00	
Perforations	16.00			3748.00	
Recorder	0.00	8374	Below	3748.00	
Blank Spacing	33.00			3781.00	
Bullnose	3.00			3784.00	58.00      Bottom Packers & Anchor

**Total Tool Length: 93.00**



**TRILOBITE  
TESTING, INC**

**DRILL STEM TEST REPORT**

**FLUID SUMMARY**

Sandlin Oil Corporation  
621 17th St  
Ste 2055  
Denver CO 80293-2001  
ATTN: Gary Sandlin

**15-12s-18w Ellis,KS**  
**Karlin #4**  
Job Ticket: 46016      DST#: 2  
Test Start: 2011.12.13 @ 21:35:32

**Mud and Cushion Information**

Mud Type: Gel Chem	Cushion Type:	Oil API: 24 deg API
Mud Weight: 9.00 lb/gal	Cushion Length: ft	Water Salinity: ppm
Viscosity: 60.00 sec/qt	Cushion Volume: bbl	
Water Loss: 8.73 in <sup>3</sup>	Gas Cushion Type:	
Resistivity: ohm.m	Gas Cushion Pressure: psig	
Salinity: 5000.00 ppm		
Filter Cake: 1.00 inches		

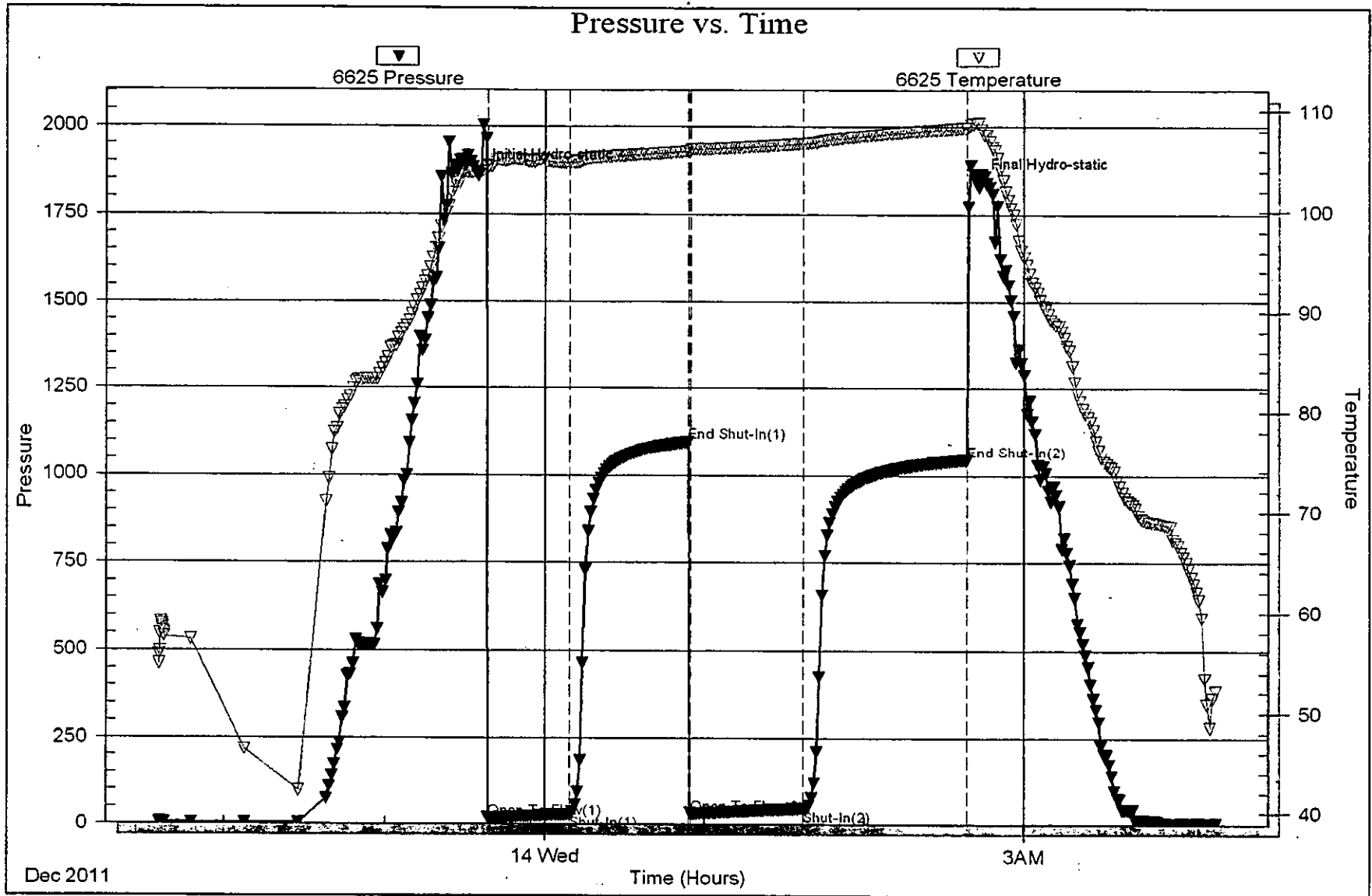
**Recovery Information**

Recovery Table

Length ft	Description	Volume bbl
60.00	CO	0.842
30.00	MO 30%M70%O	0.421

Total Length: 90.00 ft      Total Volume: 1.263 bbl  
 Num Fluid Samples: 0      Num Gas Bombs: 0      Serial #:  
 Laboratory Name:      Laboratory Location:  
 Recovery Comments:

**RECEIVED  
FEB 23 2012  
KCC WICHITA**

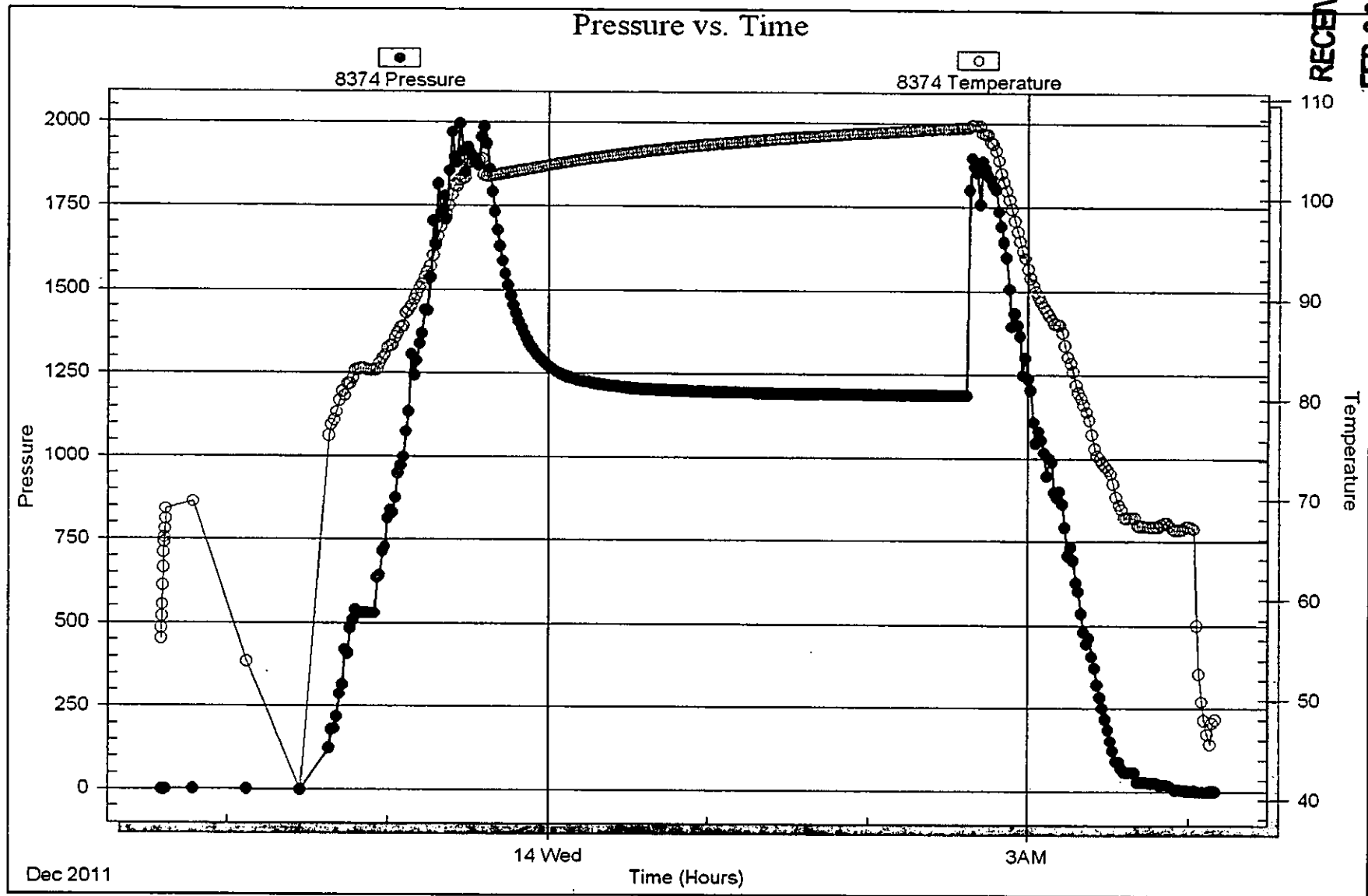


Serial #: 8374

Below (Stratton) Oil Corporation

Karlin #4

DST Test Number: 2



RECEIVED

FEB 23 2012

KCC WICHITA