

Section 11 Township 12 Range 18W

Well No. #3 Staab

Company Wick Petroleum

Sec. 11 Twp. 12 R. 18W

Well No. #3 Staab Farm _____

Wick Petroleum Company _____

Contractor _____

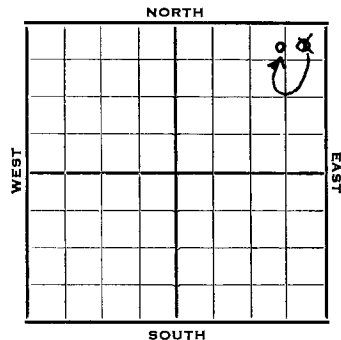
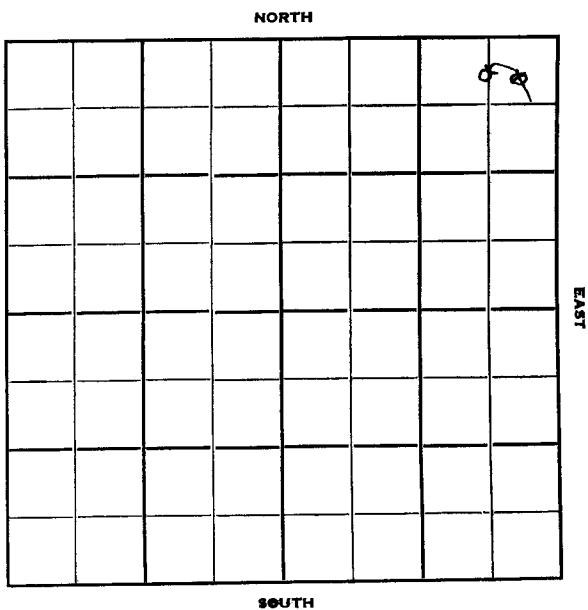
330 Ft. from N. Line

Ft. from S. Line

~~150~~
~~330~~ Ft. from E. Line

Ft. from W. Line

NE-NE-NE-
CNL-NE-NE



1952	Elev. 2110'	REPORT
5/14	RUR	
5/21	8" @ 156	Anhy 1376 Dr1g. 2650'
5/28	Heeb 3317'	Lans. 3358' DST 3438-62, 1/2 hr, 12' M O# Simp. 3615' Arb. 3633' Dr1b. 3690'
6/11	NR	
6/18	MTD 3680'	5" @ 3655 CO 3670 36/3659-69 B/15 gal OPH 500 A S/14 BOPH for 4 hrs. POP
6/25	NR	
7/3	"	
7/9	"	
7/17	"	
7/23	"	
7/30	NR	
8/6	P/100 Bopd & 14% wtr.	
8/13	NR	
8/20	"	
8/27	"	
9/3	"	
9/10	"	
		OVER

521514

1952

9/17

NR

9/24

Spud 5-13-52

Oil Well TD 3680' 8" @ 156

Anhy 1376 Heeb. 3317

Lans. 3358

DST 3438-62 open $\frac{1}{2}$ hr. rec. 12' mud

of Simp. 3615 Arb. 3633

TD 3680 5" @ 3655' CO to 3670

36/ 3659-69 B/ 15 goph 500 A

S/ 14 boph P/ 100 bopd 14% wtr.

Comp. 100 bopd 14% wtr.

COMPLETED

Map No. _____ Sec. 11 Twp. 12 R. 18W

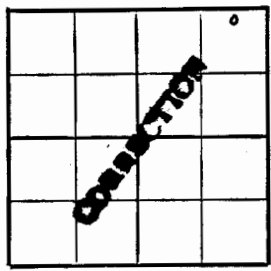
Well No. 3 Staab

Wick Petroleum Company

Contractor

C N L NE NE

SECTION PLAT



330 Ft. from N. Line
____ Ft. from S. Line
750 Ft. from E. Line
____ Ft. from W. Line

Ellis County

Location _____

Rig up _____

Drilling and Remarks:

Reported
NE NE NE

RECORD

Cased _____ in., _____ ft.
Sand _____
Gas _____
Oil _____
Total Depth _____

PRODUCTION

1st 24 hrs. Nat. _____
1st 24 hrs. after shot _____
Gas _____ Cu. Ft.
Dry Hole _____
Abandoned _____

Date
MAY 21 1952

19

J. G. McGEHEE

Scout

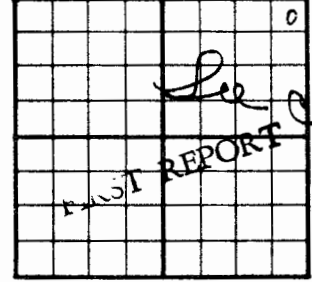
County Ellis State Kansas

Sec. 11 (Blk. Twp.) 12 (Sur. Rge.) 18W Map No.

Operator Wick Petroleum

Well No. 3 Farm Staab

Elev. _____ Location NE NE NE



330 Ft. From N Line NE

330 Ft. From E Line Quarter

Ist. Report MAY 14 1952

Completed Correction

Remarks _____

Spudding Date _____

Drig. Data

R U R

J. G. McGEHEE

County Ellis State Kansas
 Sec. 11 (Bik. 12 (Sur. 18W Map No.
 (Twp.) (Rge.)
 Operator Wick Petroleum
 Well No. 3 Farm Staab
 Elev. 2110 Location C N L NE NE

330 Ft. From N Line NE
750 Ft. From E Line Quarter
 Ist. Report _____
 Completion SEP 24 1952
 Remarks _____
 Spudding Date 5-13-52

Drilg. Data Oil well TD 3680
8" @ 156 Anhy 1376 Heeb. 3317
Lens. 3358 DST 3438-62 open $\frac{1}{2}$ hr.
Rec. 12' mud O# Simp. 3615
Arb. 3633 TD 3680 5" @ 3655 CO to 3670
36/ 3659-69 B/ 15 goph 500 A S/ 14 bopd
P/ 100 bopd 14% wtr.
Comp. 100 bopd 14% wtr.

J. G. McGEHEE