

STATE CORPORATION COMMISSION OF KANSAS
OIL & GAS CONSERVATION DIVISION
WELL COMPLETION OR RECOMPLETION FORM
ACO-1 WELL HISTORY

DESCRIPTION OF WELL AND LEASE

Operator license # 5430
name ENERGY THREE, INC.
address P.O. Box 1505
City/State/Zip GREAT BEND, KANSAS 67530

Operator Contact Person CHARLES DIXON
Phone AC316-792-5968

Driller license # 5836
name BIG THREE DRILLING, INC.

Wellbore Geologist CHRIS PETERIS
Phone AC316-264-7433

Designate Type of Completion

New Well Re-Entry Workover

- Oil SWD Temp Abd
- Gas Inj Delayed Comp.
- Dry Other (Core, Water Supply etc.)

Old Well Info (OWWI): old well info as follows:

Operator
Well Name
Comp. Date
Old Total Depth

WELL HISTORY

Drilling Method: Mud Rotary Air Rotary Cable

Spud Date 3-3-85 Date Reached TD 3-30-85 Completion Date

Total Depth 4193' PBD

Amount of Surface Pipe Set and Cemented at 262' feet

Multiple Stage Cementing Collar Used? Yes No

If Yes, Show Depth Set feet

If alternate 2 completion, cement circulated from 262' feet depth to -0- w/ 175 SX cmt

Wireline Log Rec'd
Drillers Time Log Rec'd

API NO. 15-195-21,684

County TREGG

SE NW NE (location) Sec 14 Twp 12S Rge 23 East West

4290 Ft North from Southeast Corner of Section
1650 Ft West from Southeast Corner of Section
(Note: locate well in section plat below)

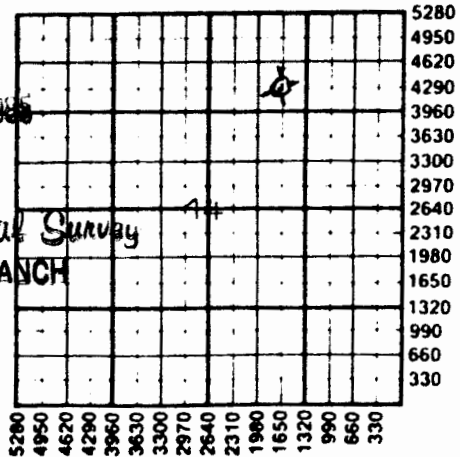
Lease Name RHODEN Well# 1

Field Name

Producing Formation

Elevation: Ground 2458' KB 2463'

Section Plat



MAY 30 1985

State Geological Survey
WICHITA BRANCH

WATER SUPPLY INFORMATION

Source of Water:

Division of Water Resources Permit #

Groundwater 4290' Ft North From Southeast Corner and
1680' Ft. West From Southeast Corner of
Sec Twp Rge East West
14 12S 23

Surface Water Ft North From Southeast Corner and
Ft West From Southeast Corner
Sec Twp Rge East West

Other (explain) (purchased from city, R.W.D.#)

Disposition of Produced Water: Disposal Repressuring

Docket #

INSTRUCTIONS: This form shall be completed in duplicate and filed with the Kansas Corporation Commission, 200 Colorado Derby Building, Wichita, Kansas 67202, within 90 days after completion or recompletion of any well. Rules 82-3-130 and 82-3-107 apply.

Information on side two of this form will be held confidential for a period of 12 months if requested in writing and submitted with the form. See rule 82-3-107 for confidentiality in excess of 12 months.

One copy of all wireline logs and drillers time log shall be attached with this form. Submit CP-4 form with all plugged wells. Submit CP-111 form with

WELL LOG

INSTRUCTIONS: Show important tops and base of formations penetrated. Detail all cores. Report all drill stem tests giving interval tested, time tool open and closed, flowing and shut-in pressures, whether shut-in pressure reached static level, hydrostatic pressures, bottom hole temperature, fluid recovery, and flow rates if gas to surface during test. Attach extra sheet if more space is needed. Attach copy of log.

Drill Stem Tests Taken Yes No
 Samples Sent to Geological Survey Yes No
 Cores Taken Yes No

Formation Description
 Log Sample

D.S.T. # 1: FROM 4095' TO 4124'
 TIMES = 30 - 45 - 30 - 45
 RECOVERED 25' DRILLING MUD
 INITIAL FLOW PRESSURE = 36 - 36
 FINAL FLOW PRESSURE = 36 - 36
 INITIAL SHUTIN PRESS. = 1121 #
 FINAL SHUTIN PRESS. = 960 #

Name	Top	Bottom
TOPEKA	3475'	(- 1012)
HEEBNER	3696'	(- 1233)
TORONTO	3716'	(- 1253)
LANS.-KC	3731'	(- 1268)
MARM.CHERT	4088'	(- 1625)
ARBUCKLE	4169'	(- 1706)
LOG T.D.	4195'	

APR 3 0 1988
 Kansas Geological Survey
 WICHITA BRANCH

CASING RECORD

new used

Report all strings set - conductor, surface, intermediate, production, etc.

Purpose of string	size hole drilled	size casing set (in O.D.)	weight lbs/ft.	setting depth	type of cement	# sacks used	type and percent additives
SURFACE	12 1/4"	8 5/8"	23 #	262'	60/40 P.z	175	3% G.C.S. 2% G.E.L.

PERFORATION RECORD

Acid, Fracture, Shot, Cement Squeeze Record

shots per foot	specify footage of each interval perforated	(amount and kind of material used)	Depth