

POINT	PRESSURE		P.S.I.
	FIELD READING	OFFICE READING	
(A) Initial Hydrostatic Mud .....	2361	2369	P.S.I.
(B) First Initial Flow Pressure .....	32	57	P.S.I.
(C) First Final Flow Pressure .....	32	32	P.S.I.
(D) Initial Closed-in Pressure .....	1120	1113	P.S.I.
(E) Second Initial Flow Pressure .....	32	49	P.S.I.
(F) Second Final Flow Pressure .....	32	32	P.S.I.
(G) Final Closed-in Pressure .....	961	960	P.S.I.
(H) Final Hydrostatic Mud .....	2348	2348	P.S.I.

# SUPERIOR TESTERS ENTERPRISES, INC.

## WELL IDENTIFICATION DATA

---

COMPANY : ENERGY THREE                      WELL NAME : RHODEN #1  
ADDRESS : P.O.BOX 1505, GREAT BEND        LOCATION : 14-12S-23W  
STATE & COUNTY : KANSAS, TREGO            FIELD :  
ELEV. (GR) :                                (KB) :                      TEST DATE : 3-29-85

## EQUIPMENT AND HOLE DATA

---

FORMATION TESTED : MARMATON                      DRILL PIPE LENGTH(ft) : 4074  
TEST INT. KB : 4095                      to 4124                      DRILL PIPE O.D.(in) : 3.82  
ANCHOR LENGTH(ft) : 29                      WEIGHT PIPE LENGTH(ft) : NONE  
TYPE OF TEST : Conventional                      WEIGHT PIPE ID : NONE  
TOTAL DEPTH(ft-kb) : 4124                      DRILL COLLAR LENGTH(ft) : NONE  
MAIN HOLE SIZE(in) : 7 7/8                      DRILL COLLAR I.D.(in) : NONE  
MUD WEIGHT : 10.2                      TOP PACKER DEPTH(kb) : 4090  
MUD VISCOSITY : 43                      BOTTOM PACKER DEPTH(kb) : 4095  
MUD CHLORIDES :                      DUAL PACKERS : YES  
SURFACE CHOKE : 3/4                      PACKER SIZE(in) : 6 3/4  
BOTTOM CHOKE(in) : 3/4                      PACKER HOLD : Yes  
TOOL SIZE(O.D.) : 5 1/2                      TOOL PLUG : No  
TOOL JOINT SIZE(F.H.) : 4 1/2                      REVERSED OUT : No  
RESERVOIR TEMPERATURE(F) : 107                      TEST TICKET NUMBER : 9354

EXTRA EQUIPMENT :

ELEMENT SERIAL NO. : 3875  
RANGE :            0 - 4225                      CLOCK RANGE : 12 HOURS  
CAL. EQU. : 1060.93 \* Def1. +            4.92

---

## SURFACE BLOW

1st Opening :            WEAK-ALMOST DEAD IN 3 MINUTES  
2nd Opening :            NO BLOW

## RECOVERY

Recovered 20 feet of MUD

REMARKS :

WITNESSED BY :

TOOL OPERATOR : IVAN SUPPES

INTERPRETATION BY : SUPERIOR TESTERS ENTERPRISES, INC.

# SUPERIOR TESTERS ENTERPRISES, INC.

## SUBSURFACE PRESSURE MEASUREMENTS

---

COMPANY : ENERGY THREE  
 DATE OF TEST : 3-29-85  
 DEPTH : 4119.0

WELL NAME : RHODEN #1  
 LOCATION : 14-12S-23W  
 SERIAL NO. : 3875

COMMENTS	TIME min	DEFL in	PRESSURE PSIG		
			----- CALC	CORR	----- CORRECTED
TEST NO.:1					
Depth : 4119.0 ft-kb					
-1ST HYDROSTATIC	0.0	2.225	2365.49	4.21	2369.70
-19:30 1ST FLOW	0.0	.054	62.21	-4.52	57.69
- 19:35	5.0	.036	43.11	-4.65	38.46
- 19:39	9.0	.033	39.93	-4.67	35.26
- 19:43	13.0	.031	37.81	-4.69	33.12
- 19:47	17.0	.031	37.81	-4.69	33.12
- 19:52	22.0	.030	36.75	-4.69	32.05
- 19:56	26.0	.030	36.75	-4.69	32.05
- 19:59	29.0	.030	36.75	-4.69	32.05
- 20:01	31.0	.030	36.75	-4.69	32.05
-20:01 END FLOW	0.0	.030	36.75	-4.69	32.05
- 20:04	3.0	.039	46.29	-4.63	41.67
- 20:07	6.0	.109	120.56	-4.11	116.45
- 20:10	9.0	.290	312.59	-2.76	309.83
- 20:13	12.0	.421	451.57	-1.78	449.79
- 20:15	14.0	.586	626.62	-.56	625.07
- 20:18	17.0	.681	727.41	.15	727.56
- 20:21	20.0	.771	822.90	.82	823.72
- 20:24	23.0	.830	885.49	1.26	886.75
- 20:27	26.0	.880	938.54	1.63	940.17
- 20:30	29.0	.920	980.98	1.93	982.91
- 20:33	32.0	.955	1018.11	2.10	1020.21
- 20:36	35.0	.986	1051.00	2.19	1053.19
- 20:39	38.0	1.013	1079.64	2.27	1081.91
- 20:41	40.0	1.036	1104.04	2.34	1106.38
- 20:43	42.0	1.042	1111.47	2.36	1113.83
-20:43 1ST SHUT-IN	0.0	1.043	1111.47	2.36	1113.83
-20:43 2ND FLOW	0.0	.046	53.72	-4.58	49.15
- 20:48	5.0	.036	43.11	-4.65	38.46
- 20:52	9.0	.034	40.99	-4.67	36.32
- 20:56	13.0	.032	38.87	-4.68	34.19
- 21:00	17.0	.032	38.87	-4.68	34.19
- 21:05	22.0	.031	37.81	-4.69	33.12
- 21:09	26.0	.031	37.81	-4.69	33.12
- 21:13	30.0	.030	36.75	-4.69	32.05
- 21:18	35.0	.030	36.75	-4.69	32.05
- 21:19	36.0	.030	36.75	-4.69	32.05
-21:19 END FLOW	0.0	.030	36.75	-4.69	32.05
- 21:22	3.0	.035	42.05	-4.66	37.39
- 21:25	6.0	.024	94.04	-4.29	89.74

# SUPERIOR TESTERS ENTERPRISES, INC.

## SUBSURFACE PRESSURE MEASUREMENTS

---

COMPANY : ENERGY THREE  
 DATE OF TEST : 3-29-85  
 DEPTH : 4119.0

WELL NAME : RHODEN #1  
 LOCATION : 14-12S-23W  
 SERIAL NO. : 3875

COMMENTS	TIME min	DEFL in	PRESSURE PSIG		
			----- CALC	CORR	CORRECTED
TEST NO.: 1					
- 21:28	9.0	.174	189.52	-3.62	185.90
- 21:30	11.0	.331	356.09	-2.45	353.63
- 21:33	14.0	.470	503.56	-1.42	502.14
- 21:36	17.0	.582	622.38	-.59	621.79
- 21:39	20.0	.662	707.26	.01	707.26
- 21:42	23.0	.714	762.42	.40	762.82
- 21:45	26.0	.757	808.04	.72	808.76
- 21:48	29.0	.795	848.36	1.00	849.36
- 21:51	32.0	.823	878.07	1.21	879.27
- 21:54	35.0	.857	914.14	1.46	915.60
- 21:56	37.0	.880	938.54	1.63	940.17
- 21:59	40.0	.899	958.70	1.77	960.47
-21:59 2ND SHUT-IN	0.0	.899	958.70	1.77	960.47
- 21:59	0.0	2.205	2344.27	4.24	2348.52
-2ND HYDROSTATIC	0.0	2.205	2344.27	4.24	2348.52

SUPERIOR TESTERS ENTERPRISES, INC.

DATA SUMMARY

COMPANY : ENERGY THREE  
DATE OF TEST : 3-29-85

WELL NAME : RHODEN #1  
LOCATION : 14-12S-23W

RECOVERY INFORMATION

---

LIQUID RECOVERY

Total Fluid Recovered : 20

Recovered 20 feet of MUD

---

GAS RECOVERY

Measured With :

Riser :

Time (min.)

( )

Reading

Surface Choke (in.)

Cubic feet/day

---

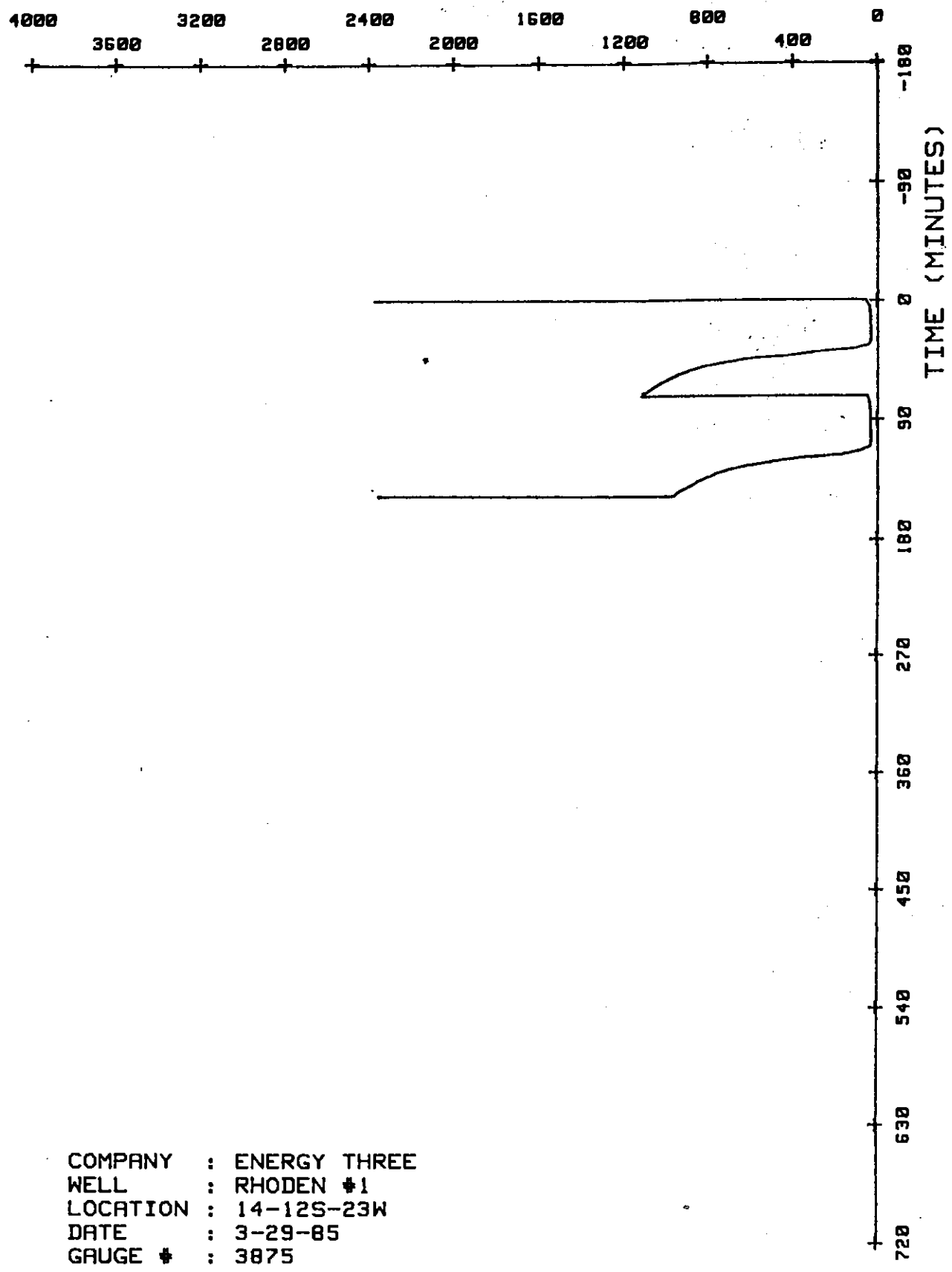
FLUID PROPERTIES

Viscosity (cp)

Compressibility (psi-1)

Pore Space Saturation

PRESSURE ( P S I G )



COMPANY : ENERGY THREE  
WELL : RHODEN #1  
LOCATION : 14-12S-23W  
DATE : 3-29-85  
GAUGE # : 3875

# SUPERIOR TESTERS ENTERPRISES, INC.

## DATA SUMMARY

COMPANY : ENERGY THREE  
 DATE OF TEST : 3-29-85  
 DST. NO : 1

WELL NAME : RHODEN #1  
 LOCATION : 14-12S-23W  
 SHUT-IN PERIOD : 2

### INTERPRETIVE DATA (OIL)

#### TRANSMISSIBILITY

Oil (md.ft/cp): .....	0.00
Gas (md.ft/cp): .....	0.00

#### EFFECTIVE PERMEABILITY

Oil (md): .....	0.00
Gas (md): .....	0.00

TOTAL MOBILITY (md/cp): .....	0.00
-------------------------------	------

TOTAL COMPRESSIBILITY (psi-1): .....	0.00E+00
--------------------------------------	----------

ESTIMATED DAMAGE RATIO: .....	.23
-------------------------------	-----

CALCULATED DAMAGE RATIO: .....	0.00
--------------------------------	------

Reservoir Temperature (F): .....	107.00
----------------------------------	--------

Formation Porosity : .....	0.00
----------------------------	------

Formation Thickness (ft): .....	10.00
---------------------------------	-------

Wellbore Radius (in): .....	3.94
-----------------------------	------

Reservoir Compressibility (psi-1): .....	0.00E+00
--	----------

Calculated Skin Factor : .....	0.00
--------------------------------	------

PRODUCTION WITH DAMAGE REMOVED (bbl/D): .....	0.00
---	------

PRODUCTIVITY INDEX (bbl/psi): .....	0.00
-------------------------------------	------

Final Flow Pressure (psi): .....	32.05
----------------------------------	-------

APPROXIMATE RADIUS OF INVESTIGATION (ft): .....	0.00
---	------

Total Flowing Time (min): .....	61.00
---------------------------------	-------

EXTRAPOLATED RESERVOIR PRESSURE (psi): .....	1617.00
--	---------

Slope of Build-up Curve (psi/log cycle): .....	1552.97
--	---------

Effective Producing Time (min): .....	61.00
---------------------------------------	-------

**SUPERIOR TESTERS**  
RR #1, Box 295B, Great Bend, Kansas

Date 3-29-85 Location 14 1/2" 23" Elevation \_\_\_\_\_ County Trigo

Company Energy III Number of Copies \_\_\_\_\_

Address P.O. Box 1505 Great Bend Kansas 67530

Charts Mailed to P.O. Box 1505 Great Bend Kansas 67530

Invoice Mailed to P.O. Box 1505 Great Bend Kansas 67530

Lease Rhodes Well No. =1 Formation Tested Miscellaneous Test No. 51

Depth 4124' Tested from 4095' to 4124' Packer Size 6 3/4 Anchor Length 29'

Top Packer Depth 4090 ft. Bottom Packer Depth 4095' ft. Dual Packers yes

Tool Joint Size 4 1/2 F.H. Tool Size 5 1/2 O.L. Hole Size 7 7/8 Did Packer Hold yes

Drilling Contractor Big Three Drilling

Length Drill Pipe 4074' I.D. Drill Pipe 3 1/2 Tool Joint Size 4 1/2 X H.

Length Weight Pipe None I.D. Weight Pipe - Tool Joint Size -

Length Drill Collars None I.D. Drill Collars - Tool Joint Size -

Tool Open I.F.P. from <u>7:30</u> A.M. to <u>8:00</u> P.M. <u>30</u> min	from [B] <u>32</u> P.S.I. to [C] <u>32</u> P.S.I.
Tool Closed I.C.I.P. from <u>8:00</u> P.M. to <u>8:45</u> P.M. <u>45</u> min	[D] <u>1120</u> P.S.I.
Tool Open F.F.P. from <u>8:45</u> P.M. to <u>9:15</u> P.M. <u>30</u> min	from [E] <u>32</u> P.S.I. to [F] <u>32</u> P.S.I.
Tool Closed F.C.I.P. from <u>9:15</u> P.M. to <u>10:00</u> P.M. <u>45</u> min	[G] <u>961</u> P.S.I.

Initial Hydrostatic Pressure [A] 2361 P.S.I. Final Hydrostatic Pressure [H] 2348 P.S.I. Maximum Temp 107 °F

Initial Blow Weak Blow - Almost dead in 30 minutes

Final Blow No is seen

Gas to Surface None Min. Oil to Surface None Min. Mud Weight 12 Viscosity 10<sup>21</sup>

Gas Guaged None

Recovery 20' of mud

Remarks Rained 1 Packer

Extra Equipment-Jars None Safety Joint None Extra Packer None Straddle None Hook Wall None

Top Recorder No. 3875 Clock no. 21914 Depth 4119 Ctr. Sub - Sampler None

Bottom Recorder No. 2186 Clock No. 13056 Depth 4122' Chlorides - pits \_\_\_\_\_ D.S.T. \_\_\_\_\_

Price of Job 650.00

Tool Operator Dean Lippard

Approved By \_\_\_\_\_

SUPERIOR TESTERS, INC. SHALL NOT BE LIABLE FOR DAMAGE OF ANY KIND TO THE PROPERTY OR PERSONEL OF THE ONE FOR WHOM A TEST IS MADE, OF FOR ANY LOSS SUFFERED OR SUSTAINED, DIRECTLY OR INDIRECTLY, THROUGH THE USE OF ITS EQUIPMENT, OR ITS STATEMENTS OR OPINION CONCERNING THE RESULTS OF ANY TEST. TOOLS LOST OR DAMAGED IN THE HOLE SHALL BE PAID FOR AT COST BY THE PARTY FOR WHOM THE TEST IS MADE.

Ticket No 9354