

15-109-20129

State Geological Survey
WICHITA BRANCH
KANSAS DRILLERS LOG

IMPORTANT
Kans. Geo. Survey request
samples on this well.

API No. 15 — 109 — 20,129
County Number

S. 32 T. 12 R. 33 E W
Loc. W2 SW NE
County Logan

Operator
Beren Corp.

Address
970 Fourth Financial Center Wichita, Kansas 67202

Well No. #1 Lease Name Lee

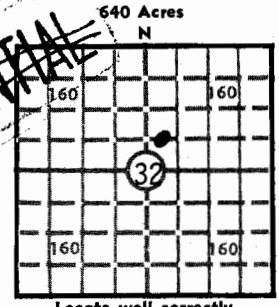
Footage Location
feet from (N) (S) line feet from (E) (W) line

Principal Contractor Geologist
Abercrombie Drilling, Inc. Tyler Sanders

Spud Date Total Depth P.B.T.D.
June 18, 1979 4750

Date Completed Oil Purchaser
June 30, 1979

~~CONFIDENTIAL~~



Locate well correctly
Elev.: Gr. 3098
DF _____ KB _____

CASING RECORD

Report of all strings set — surface, intermediate, production, etc.

Purpose of string	Size hole drilled	Size casing set (in O.D.)	Weight lbs/ft.	Setting depth	Type cement	Sacks	Type and percent additives
Surface	12 1/4	8-5/8"	24#	257'	60-40 pozmix	150	3% CaCl

LINER RECORD

PERFORATION RECORD

Top, ft.	Bottom, ft.	Sacks cement	Shots per ft.	Size & type	Depth interval

TUBING RECORD

Size	Setting depth	Packer set at

ACID, FRACTURE, SHOT, CEMENT SQUEEZE RECORD

Amount and kind of material used	Depth interval treated

INITIAL PRODUCTION

Date of first production	Producing method (flowing, pumping, gas lift, etc.)				
RATE OF PRODUCTION PER 24 HOURS	Oil	Gas	Water	Gas-oil ratio	
Disposition of gas (vented, used on lease or sold)	bbls.	MCF	bbls.	CFPB	
Producing interval (s)					

INSTRUCTIONS: As provided in KCC Rule 82-2-125, within 90 days after completion of a well, one completed copy of this Drillers Log shall be transmitted to the State Geological Survey of Kansas, 4150 Monroe Street, Wichita, Kansas 67209. Copies of this form are available from the Conservation Division, State Corporation Commission, 3830 So. Meridian (P.O. Box 17027), Wichita, Kansas 66217. Phone AC 316-522-2206. If confidential custody is desired, please note Rule 82-2-125. Drillers Logs will be on open file in the Oil and Gas Division, State Geological Survey of Kansas, Lawrence, Kansas 66044.

Operator
Beren Corporation

DESIGNATE TYPE OF COMP.: OIL, GAS,
DRY HOLE, SWDW, ETC.:

Well No. 1 Lease Name LEE Dry Hole

S 32 T 12 R 33W^E_W

WELL LOG

Show all important zones of porosity and contents thereof; cored intervals, and all drill-stem tests, including depth interval tested, cushion used, time tool open, flowing and shut-in pressures, and recoveries.

SHOW GEOLOGICAL MARKERS, LOGS RUN, OR OTHER DESCRIPTIVE INFORMATION.

FORMATION DESCRIPTION, CONTENTS, ETC.	TOP	BOTTOM	NAME	DEPTH
Sand and shale	0	258		
Shale and sand	258	2219		
Lime and shale	2219	2563		
Shale and lime	2563	3051		
Lime and shale	3051	4006		
Lime	4006	4050		
Lime and shale	4050	4111		
Lime	4111	4135		
Lime and shale	4135	4151		
Lime	4151	4750		
Rotary Total Depth	4750			

USE ADDITIONAL SHEETS, IF NECESSARY, TO COMPLETE WELL RECORD.

Date Received

Don Beauchamp
Signature

Don Beauchamp -- Geologist
Title

July 10, 1979
Date

CONTRACTOR'S WELL LOG

OPERATOR: Beren Corporation
CONTRACTOR: Abercrombie Drilling, Inc.
WELL NAME: Lee #1
LOCATION: W/2 SW NE, Section 32-12S-33W
Logan County, Kansas
SPUD DATE: June 18, 1979
COMPLETION DATE: June 30, 1979

0	258	Sand and shale
258	2219	Shale and sand
2219	2563	Lime and shale
2563	3051	Shale and lime
3051	4006	Lime and shale
4006	4050	Lime
4050	4111	Lime and shale
4111	4135	Lime
4135	4151	Lime and shale
4151	4750	Lime
	4750	Rotary Total Depth

Spud hole at 6:00 p.m., June 18, 1979. Drilled 258' of 12 $\frac{1}{4}$ " hole. Ran 6 joints of used 8-5/8" - 24# casing. Set at 257' with 150 sacks of 60/40 posmix, 3% Ca.Cl. Cement did circulate. Plug was down at 11:45 p.m., June 18, 1979.

T.D. 4750'. Set 1st plug at 1650' with 250 sacks, 2nd plug at 240' with 20 sacks, 3rd plug at 40' with 10 sacks and 5 sacks in the rathole. Cemented with 50/50 posmix, 6% gel. Plug was down at 9:15 a.m., June 30, 1979.

SAMPLE TOPS:

Anhydrite 2581'
B/Anhydrite 2607'

STATE OF KANSAS)
) ss
COUNTY OF SEDGWICK)

Jerry A. Langrehr, Executive Vice-President of Abercrombie Drilling, Inc., does hereby state that the above and foregoing is a true and correct copy of the log of the Lee #1, W/2 SW NE, Section 32-12S-33W, Logan County, Kansas.

ABERCROMBIE DRILLING, INC.