



15-109-20752-0000

11-12-34W

DIAMOND TESTING

P.O. Box 157
HOISINGTON, KANSAS 67544
(620) 653-7550 • (800) 542-7313
STC 21098.D168

Page 1 of 3 Pages

Company Ritchie Exploration, Inc. Lease & Well No. Peterson 11A No. 1
 Elevation 3206KB Formation Lansing/Kansas City "E" Effective Pay -- Ft. Ticket No. 2057
 Date 9-19-05 Sec. 11 Twp. 12S Range 34W County Logan State Kansas
 Test Approved By Jeff Christian Diamond Representative Roger D. Friedly

Formation Test No. 1 Interval Tested from 4,197 ft. to 4,218 ft. Total Depth 4,218 ft.
 Packer Depth 4,192 ft. Size 6 3/4 in. Packer Depth -- ft. Size -- in.
 Packer Depth 4,197 ft. Size 6 3/4 in. Packer Depth -- ft. Size -- in.
 Depth of Selective Zone Set ft.

Top Recorder Depth (Inside) 4,185 ft. Recorder Number 21098 Cap. 5,000 psi
 Bottom Recorder Depth (Outside) 4,215 ft. Recorder Number 13387 Cap. 4,000 psi
 Below Straddle Recorder Depth ft. Recorder Number Cap. psi

Drilling Contractor Murfin Drilling Co., Inc. - Rig 14 Drill Collar Length 566 ft. I.D. 2 1/4 in.
 Mud Type Chemical Viscosity 54 Weight Pipe Length -- ft. I.D. -- in.
 Weight 9.0 Water Loss 8.8 cc. Drill Pipe Length 3,606 ft. I.D. 3 1/2 in.
 Chlorides 3,500 P.P.M. Test Tool Length 25 ft. Tool Size 3 1/2 - IF in.
 Jars: Make Bowen Serial Number Not Run Anchor Length 21 ft. Size 4 1/2 - FH in.
 Did Well Flow? No Reversed Out No Surface Choke Size 1 in. Bottom Choke Size 5/8 in.

Main Hole Size 7 7/8 in. Tool Joint Size 4 1/2 - XH in.
 Blow: 1st Open: Weak, 1/8 in., blow increasing to 1/2 in. Decreasing in 15 mins. Weak, 1/8 in., blow at end. No blow back during shut-in.
 2nd Open: No blow. No blow back during shut-in.

Recovered 15 ft. of drilling mud with a few oil specks = .073800 bbls.
 Recovered ft. of
 Recovered ft. of
 Recovered ft. of
 Recovered ft. of
 Remarks Tool Sample Grind Out: 100%-drilling mud with "heavy" oil trace

Time Set Packer(s) 3:59 ~~P.M.~~ ^{A.M.} Time Started Off Bottom 5:59 ~~P.M.~~ ^{A.M.} Maximum Temperature 116°
 Initial Hydrostatic Pressure (A) 1963 P.S.I.
 Initial Flow Period Minutes 30 (B) 6 P.S.I. to (C) 15 P.S.I.
 Initial Closed In Period Minutes 30 (D) 1129 P.S.I.
 Final Flow Period Minutes 30 (E) 12 P.S.I. to (F) 17 P.S.I.
 Final Closed In Period Minutes 30 (G) 1072 P.S.I.
 Final Hydrostatic Pressure (H) 1955 P.S.I.



DIAMOND TESTING
P. O. Box 157
HOISINGTON, KANSAS 67544
(800) 542-7313

FLUID SAMPLE DATA

Company Ritchie Exploration, Inc.
Lease & Well No. Peterson 11A No. 1
Date 9-19-05 Sec. 11 Twp. 12 S Range 34 W
Formation Test No. 1 Interval Tested From 4,197 ft. to 4,128 ft. Total Depth 4,128 ft.
Formation Lansing/Kansas City "E"

	<u>MUD PIT</u>	<u>RECOVERY</u>
Viscosity	<u>54</u> CP	<u>92</u> CP
Weight	<u>9.0</u>	<u>9.05</u>
Water Loss	<u>8.8</u> CC	<u>8.0</u> CC
PH Factor	<u>9.5</u>	<u>8.5</u>

	<u>RESISTIVITY</u>	<u>CHLORIDE CONTENT</u>
Recovery Water	<u>-- @ -- °F.</u>	<u>-- ppm</u>
Recovery Mud	<u>.85 @ 60 °F.</u>	<u>8,500 ppm</u>
Recovery Mud Filtrate	<u>.90 @ 61 °F.</u>	<u>8,000 ppm</u>
Mud Pit Sample	<u>1.15 @ 58 °F.</u>	<u>6,400 ppm</u>
Mud Pit Sample Filtrate	<u>1.20 @ 60 °F.</u>	<u>5,800 ppm</u>

Sample Taken By ROGER D. FRIEDLY

Witness By JEFF CHRISTIAN

Remarks Pit filtrate triton dish chlorides were 3,500 Ppm
Recovery filtrate triton dish chlorides were 5,200 Ppm

GENERAL INFORMATION

Client Information:

Company: RITCHIE EXPLORATION, INC.
Contact: CRAIG CAULK
Phone: Fax: e-mail:

Site Information:

Contact: JEFF CHRISTIAN
Phone: Fax: e-mail:

Well Information:

Name: PETERSON 11A #1
Operator: RITCHIE EXPLORATION, INC.
Location-Downhole: DST #1 LKC 'E' 4,197' - 4,218'
Location-Surface: SEC 11-12S-34W LOGAN COUNTY

Test Information:

Company: DIAMOND TESTING
Representative: ROGER D. FRIEDLY
Supervisor: JEFF CHRISTIAN
Test Type: CONVENTIONAL
Test Unit: NO. 1
Start Date: 2005/09/19
End Date: 2005/09/19
Report Date:
Job Number:
Start Time: 01:24:00
End Time: 08:35:00
Prepared By:
Qualified By:

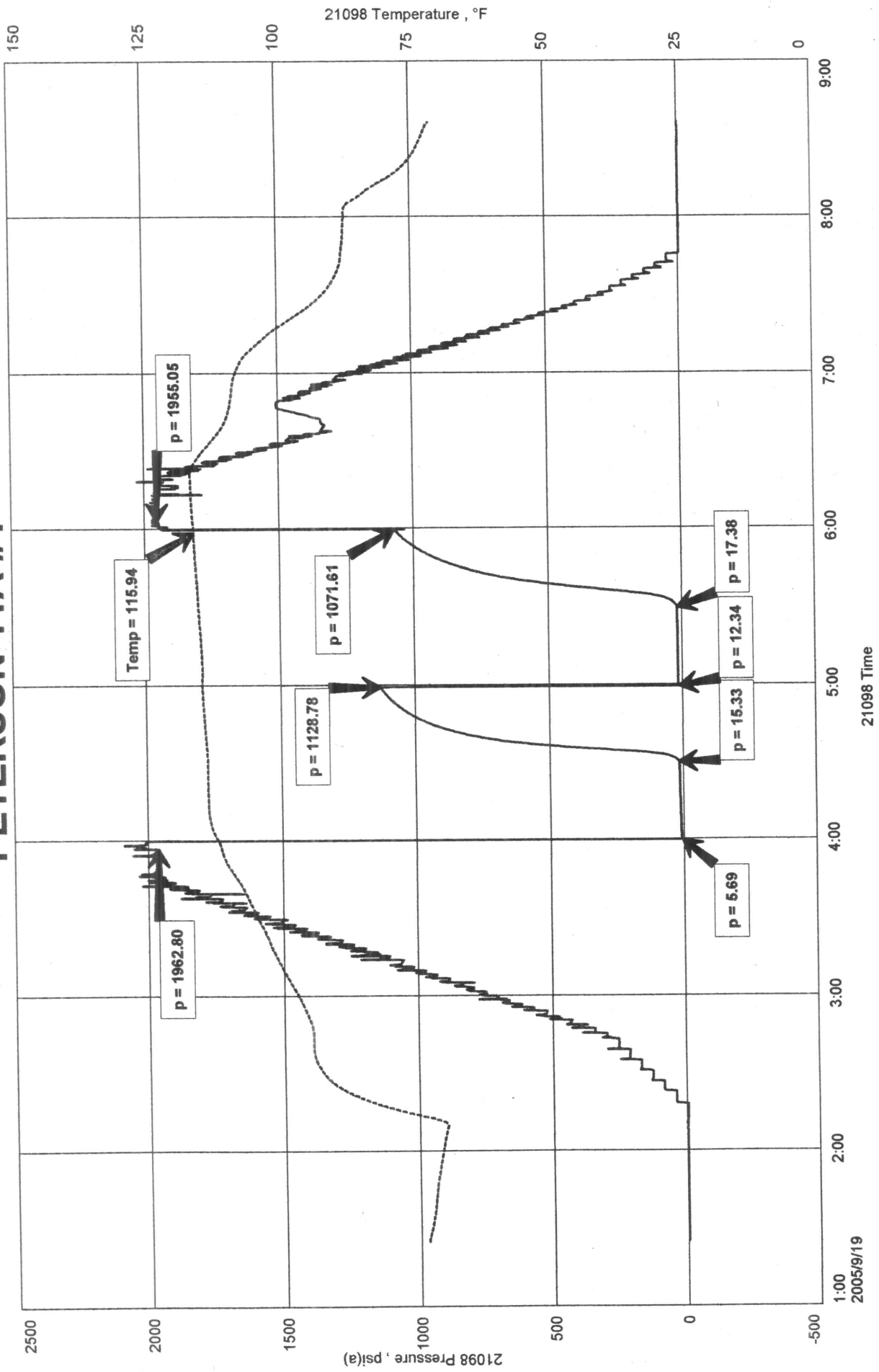
Remarks:

RECOVERED: 15 DM WITH A FEW OIL SPECKS
TOOL SAMPLE: 100% DM WITH "HEAVY OIL" SPECKS

PETERSON 11A #1
Formation: DST #1 LKC 'E' 4,197' - 4,218'
Pool: WILDCAT

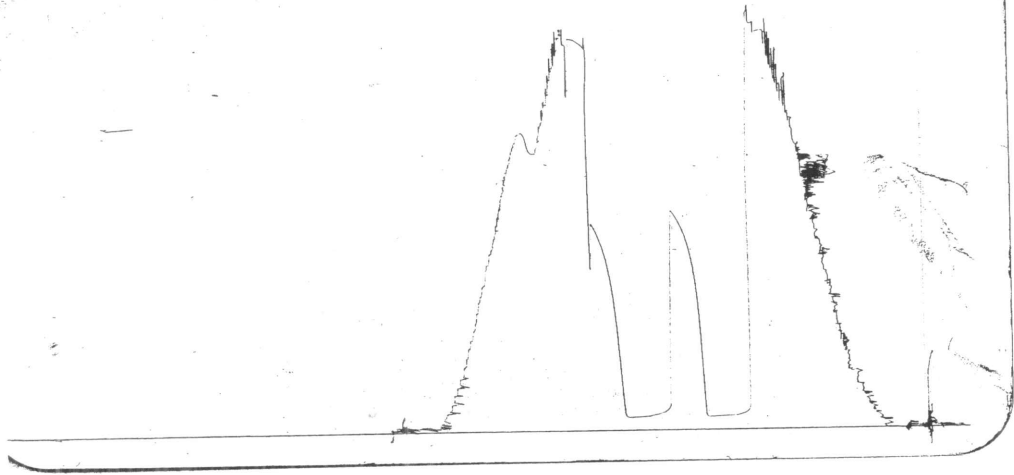
BRITCHIE EXPLORATION, INC.
DST #1 LKC 'E' 4,197' - 4,218'
Start Test Date: 2005/09/19
Final Test Date: 2005/09/19

PETERSON 11A #1



WELLS
 KGS Michels Office
 DST #1 outside 13387,
 LLC 'E'

4197-4218
 LOC 4215



This is an actual photograph of recorder chart.

POINT	PRESSURE		
	Field Reading	Elec. Office Reading	
(A) Initial Hydrostatic Mud	1963	1963	PSI
(B) First Initial Flow Pressure.....	6	6	PSI
(C) First Final Flow Pressure	15	15	PSI
(D) Initial Closed-in Pressure	1129	1129	PSI
(E) Second Initial Flow Pressure	12	12	PSI
(F) Second Final Flow Pressure.....	17	17	PSI
(G) Final Closed-in Pressure.....	1072	1072	PSI
(H) Final Hydrostatic Mud	1955	1955	PSI



11-12-34W

DIAMOND TESTING
P.O. Box 157
HOISINGTON, KANSAS 67544
(620) 653-7550 • (800) 542-7313
STC 21098.D169

Company Ritchie Exploration, Inc. Lease & Well No. Peterson 11A No. 1
Elevation 3206KB Formation Lansing/Kansas City "H" Effective Pay -- Ft. Ticket No. 2058
Date 9-19-05 Sec. 11 Twp. 12S Range 34W County Logan State Kansas

Test Approved By Jeff Christian Diamond Representative Roger D. Friedly

Formation Test No. 2 Interval Tested from 4,270 ft. to 4,306 ft. Total Depth 4,306 ft.
Packer Depth 4,265 ft. Size 6 3/4 in. Packer Depth -- ft. Size -- in.
Packer Depth 4,270 ft. Size 6 3/4 in. Packer Depth -- ft. Size -- in.
Depth of Selective Zone Set ft.

Top Recorder Depth (Inside) 4,258 ft. Recorder Number 21098 Cap. 5,000 psi
Bottom Recorder Depth (Outside) 4,303 ft. Recorder Number 13387 Cap. 4,000 psi
Below Straddle Recorder Depth ft. Recorder Number Cap. psi

Drilling Contractor Murfin Drilling Co., Inc. - Rig 14 Drill Collar Length 566 ft. I.D. 2 1/4 in.
Mud Type Chemical Viscosity 65 Weight Pipe Length -- ft. I.D. -- in.
Weight 9.2 Water Loss 8.0 cc. Drill Pipe Length 3,680 ft. I.D. 3 1/2 in.
Chlorides 4,400 P.P.M. Test Tool Length 25 ft. Tool Size 3 1/2 - IF in.
Jars: Make Bowen Serial Number Not Run Anchor Length 35 ft. Size 4 1/2 - FH in.
Did Well Flow? No Reversed Out No Surface Choke Size 1 in. Bottom Choke Size 5/8 in.
Main Hole Size 7 7/8 in. Tool Joint Size 4 1/2 - XH in.

Blow: 1st Open: Weak, 1/2 in., blow. Increasing to 5 ins. No blow back during shut-in.
2nd Open: Weak surface blow in 6 mins. Increasing to 2 3/4 ins. No blow back during shut-in.

Recovered 5 ft. of clean oil = .024600 bbls. (Gravity: 26 @ 60°)
Recovered 205 ft. of slightly oil cut watery mud = 1.008600 bbls. (Grind out: 2%-oil; 45%-water; 53%-mud)
Recovered 210 ft. of TOTAL FLUID = 1.033200 bbls.
Recovered ft. of
Recovered ft. of
Remarks Tool Sample Grind Out: 2%-oil; 6%-mud; 92%-water

Time Set Packer(s)	<u>9:57</u>	AXM. P.M.	Time Started Off Bottom	<u>12:57</u>	AXM. A.M.	Maximum Temperature	<u>119°</u>
Initial Hydrostatic Pressure		(A)	<u>1988</u>		P.S.I.		
Initial Flow Period	Minutes <u>30</u>	(B)	<u>17</u>		P.S.I. to (C)	<u>72</u>	P.S.I.
Initial Closed In Period	Minutes <u>45</u>	(D)	<u>1193</u>		P.S.I.		
Final Flow Period	Minutes <u>45</u>	(E)	<u>75</u>		P.S.I. to (F)	<u>128</u>	P.S.I.
Final Closed In Period	Minutes <u>60</u>	(G)	<u>1166</u>		P.S.I.		
Final Hydrostatic Pressure		(H)	<u>1986</u>		P.S.I.		



DIAMOND TESTING
 P. O. Box 157
 HOISINGTON, KANSAS 67544
 (800) 542-7313

FLUID SAMPLE DATA

Company Ritchie Exploration, Inc.

Lease & Well No. Peterson 11A No. 1

Date 9-19-05 Sec. 11 Twp. 12 S Range 34 W

Formation Test No. 2 Interval Tested From 4,270 ft. to 4,306 ft. Total Depth 4,306 ft.

Formation Lansing/Kansas City "H"

	<u>MUD PIT</u>	<u>RECOVERY</u>	<u>RECOVERY</u>
Viscosity	<u>65</u> CP	<u>--</u> CP	
Weight	<u>9.2</u>	<u>--</u>	
Water Loss	<u>8.0</u> CC	<u>--</u> CC	
PH Factor	<u>8.0</u>	<u>--</u>	<u>Water</u> <u>7.0</u>

	<u>RESISTIVITY</u>	<u>CHLORIDE CONTENT</u>
Recovery Water	<u>.19 @ 60 °F.</u>	<u>4,200 ppm</u>
Recovery Mud	<u>-- @ -- °F.</u>	<u>-- ppm</u>
Recovery Mud Filtrate	<u>-- @ -- °F.</u>	<u>-- ppm</u>
Mud Pit Sample	<u>.87 @ 73 °F.</u>	<u>7,000 ppm</u>
Mud Pit Sample Filtrate	<u>1.00 @ 66 °F.</u>	<u>6,800 ppm</u>

Sample Taken By ROGER D. FRIEDLY

Witness By JEFF CHRISTIAN

Remarks Pit filtrate triton dish chlorides were 4,400 Ppm
Recovery water dish chlorides were 35,000 Ppm

GENERAL INFORMATION

Client Information:

Company: RITCHIE EXPLORATION, INC.
Contact: CRAIG CAULK
Phone: Fax: e-mail:

Site Information:

Contact: JEFF CHRISTIAN
Phone: Fax: e-mail:

Well Information:

Name: PETERSON 11A #1
Operator: RITCHIE EXPLORATION, INC.
Location-Downhole: DST #2 LKC 'H' 4,270' - 4,306'
Location-Surface: SEC 11-12S-34W LOGAN COUNTY

Test Information:

Company: DIAMOND TESTING
Representative: ROGER D. FRIEDLY
Supervisor: JEFF CHRISTIAN
Test Type: CONVENTIONAL Job Number:
Test Unit: NO. 1
Start Date: 2005/09/19 Start Time: 19:55:00
End Date: 2005/09/20 End Time: 03:09:00
Report Date: Prepared By:
Remarks: Qualified By:

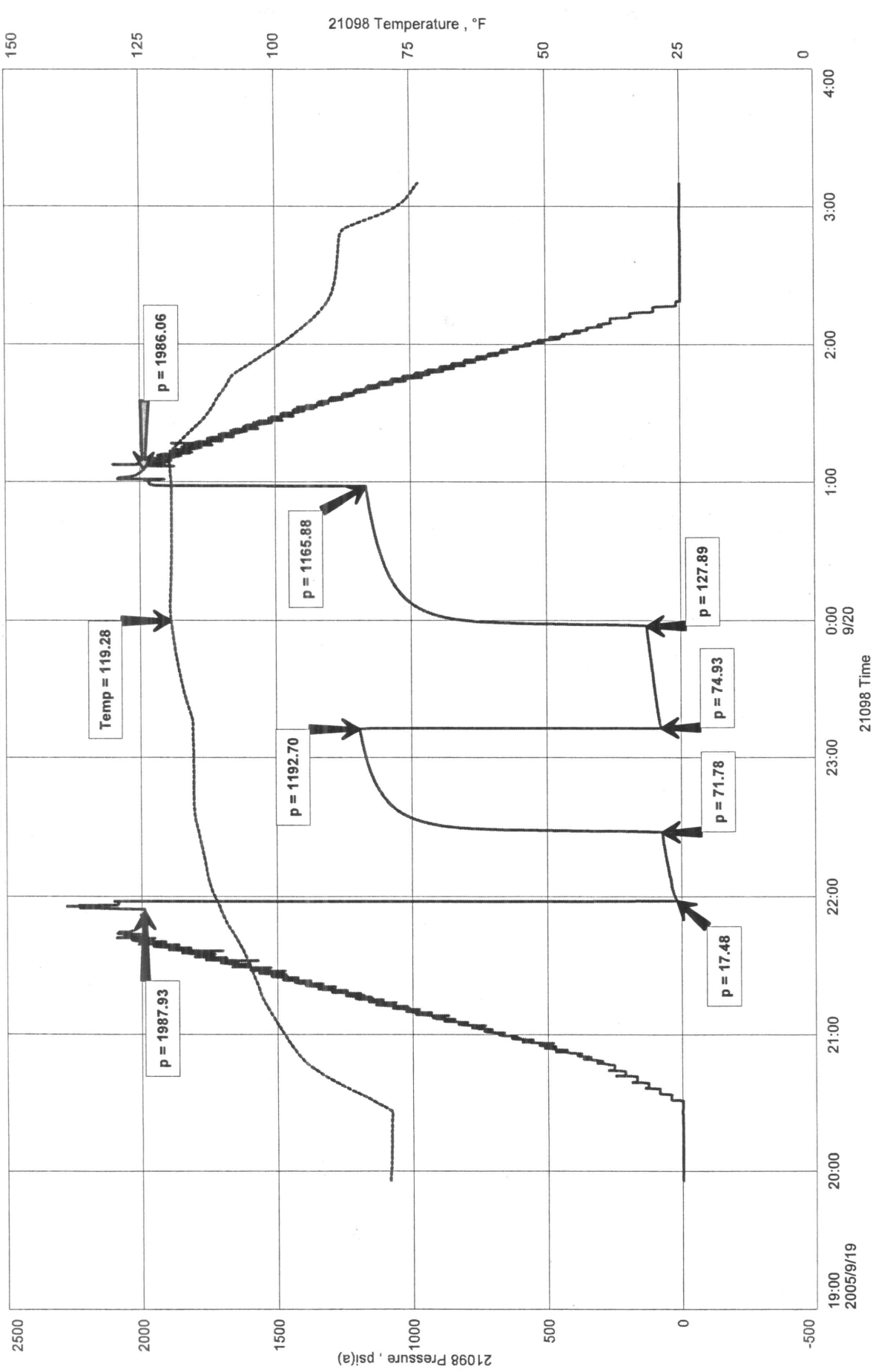
RECOVERED: 5' CLEAN OIL 26 GRAVITY @ 60 deg.
205' SLTOCWM (2% OIL, 45% WTR, 53% MUD)
210' TOTAL FLUID

TOOL SAMPLE: 2% OIL, 6% MUD, 92% WTR CHLORIDES 35,000 Ppm

RITCHE EXPLORATION, INC.
DST #2 LKC 'H' 4,270' - 4,306'
Start Test Date: 2005/09/19
Final Test Date: 2005/09/20

PETERSON 11A #1
Formation: DST #2 LKC 'H' 4,270' - 4,306'
Pool: WILDCAT

PETERSON 11A #1



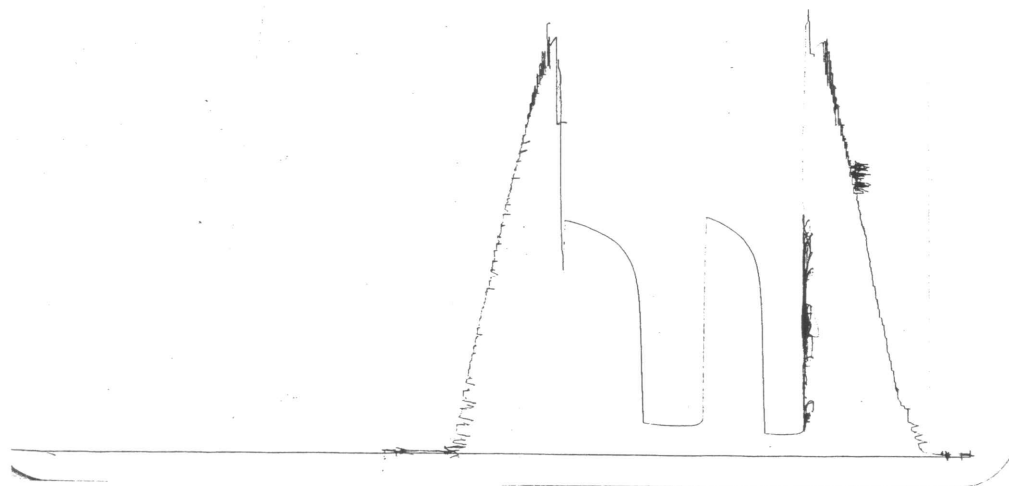
RECORDED & INDEXED
KOS Minors Co.

DSV # 4 OUTSIDE 1258'

LKC 'H'

4270-4506

LDL 4303



This is an actual photograph of recorder chart.

POINT	PRESSURE		PSI
	Field Reading	Elec. Office Reading	
(A) Initial Hydrostatic Mud	1988	1988	PSI
(B) First Initial Flow Pressure	17	17	PSI
(C) First Final Flow Pressure	72	72	PSI
(D) Initial Closed-in Pressure	1193	1193	PSI
(E) Second Initial Flow Pressure	75	75	PSI
(F) Second Final Flow Pressure	128	128	PSI
(G) Final Closed-in Pressure	1166	1166	PSI
(H) Final Hydrostatic Mud	1986	1986	PSI



11-12-34W

DIAMOND TESTING
P.O. Box 157
HOISINGTON, KANSAS 67544
(620) 653-7550 • (800) 542-7313
STC 21098.D170

Company Ritchie Exploration, Inc. Lease & Well No. Peterson 11A No. 1
Elevation 3206KB Formation Lansing/Kansas City "I" - "J" Effective Pay -- Ft. Ticket No. 2059
Date 9-20-05 Sec. 11 Twp. 12S Range 34W County Logan State Kansas

Test Approved By Jeff Christian Diamond Representative Roger D. Friedly

Formation Test No. 3 Interval Tested from 4,302 ft. to 4,358 ft. Total Depth 4,358 ft.

Packer Depth 4,297 ft. Size 6 3/4 in. Packer Depth -- ft. Size -- in.

Packer Depth 4,302 ft. Size 6 3/4 in. Packer Depth -- ft. Size -- in.

Depth of Selective Zone Set ft.

Top Recorder Depth (Inside) 4,290 ft. Recorder Number 21098 Cap. 5,000 psi

Bottom Recorder Depth (Outside) 4,355 ft. Recorder Number 13387 Cap. 4,000 psi

Below Straddle Recorder Depth ft. Recorder Number Cap. psi

Drilling Contractor Murfin Drilling Co., Inc. - Rig 14 Drill Collar Length 566 ft. I.D. 2 1/4 in.

Mud Type Chemical Viscosity 60 Weight Pipe Length -- ft. I.D. -- in.

Weight 9.0 Water Loss 8.0 cc. Drill Pipe Length 3,711 ft. I.D. 3 1/2 in.

Chlorides 4,500 P.P.M. Test Tool Length 25 ft. Tool Size 3 1/2 - IF in.

Jars: Make Bowen Serial Number Not Run Anchor Length 56 ft. Size 4 1/2 - FH in.

Did Well Flow? No Reversed Out No Surface Choke Size 1 in. Bottom Choke Size 5/8 in.

Main Hole Size 7 7/8 in. Tool Joint Size 4 1/2 - XH in.

Blow: 1st Open: Weak surface blow. Increasing to 2 ins. No blow back during shut-in.

2nd Open: Weak surface blow in 12 mins. Increasing to 1 in. No blow back during shut-in.

Recovered 25 ft. of drilling mud with a few oil specks = .123000 bbls.

Recovered 90 ft. of muddy water = .442800 bbls. (Grind out: 41%-mud; 59%-water) Chlorides: 20,000 Ppm

Recovered 115 ft. of TOTAL FLUID = .565800 bbls.

Recovered ft. of

Recovered ft. of

Remarks Tool Sample Grind Out: 2%-oil; 24%-water; 74%-mud

Time Set Packer(s)	<u>4:01</u>	AM P.M.	Time Started Off Bottom	<u>6:31</u>	AM P.M.	Maximum Temperature	<u>116°</u>
Initial Hydrostatic Pressure			(A)	<u>2012</u>	P.S.I.		
Initial Flow Period	Minutes	<u>30</u>	(B)	<u>4</u>	P.S.I. to (C)	<u>45</u>	P.S.I.
Initial Closed In Period	Minutes	<u>45</u>	(D)	<u>1297</u>	P.S.I.		
Final Flow Period	Minutes	<u>30</u>	(E)	<u>46</u>	P.S.I. to (F)	<u>81</u>	P.S.I.
Final Closed In Period	Minutes	<u>45</u>	(G)	<u>1292</u>	P.S.I.		
Final Hydrostatic Pressure			(H)	<u>2010</u>	P.S.I.		



DIAMOND TESTING
P. O. Box 157
HOISINGTON, KANSAS 67544
(800) 542-7313

Page 2 of 3 Pages

FLUID SAMPLE DATA

Company Ritchie Exploration, Inc.
Lease & Well No. Peterson 11A No. 1
Date 9-20-05 Sec. 11 Twp. 12 S Range 34 W
Formation Test No. 3 Interval Tested From 4,302 ft. to 4,358 ft. Total Depth 4,358 ft.
Formation Lansing/Kansas City "I" - "J"

	<u>MUD PIT</u>	<u>RECOVERY</u>
Viscosity	<u>60</u> CP	<u>56</u> CP
Weight	<u>9.0</u>	<u>9.0</u>
Water Loss	<u>8.0</u> CC	<u>9.6</u> CC
PH Factor	<u>9.0</u>	<u>8.5</u>

	<u>RESISTIVITY</u>	<u>CHLORIDE CONTENT</u>
Recovery Water	<u>.22 @ 86 °F.</u>	<u>24,000 ppm</u>
Recovery Mud	<u>.56 @ 92 °F.</u>	<u>9,000 ppm</u>
Recovery Mud Filtrate	<u>.60 @ 90 °F.</u>	<u>8,200 ppm</u>
Mud Pit Sample	<u>.75 @ 90 °F.</u>	<u>6,900 ppm</u>
Mud Pit Sample Filtrate	<u>.80 @ 94 °F.</u>	<u>6,000 ppm</u>

Sample Taken By ROGER D. FRIEDLY

Witness By JEFF CHRISTIAN

Remarks Pit filtrate triton dish chlorides were 4,500 Ppm
Recovery filtrate triton dish chlorides were 6,500 Ppm
Recovery water dish chlorides were 20,000 Ppm

GENERAL INFORMATION

Client Information:

Company: RITCHIE EXPLORATION, INC.
Contact: CRAIG CAULK
Phone: Fax: e-mail:

Site Information:

Contact: JEFF CHRISTIAN
Phone: Fax: e-mail:

Well Information:

Name: PETERSON 11A #1
Operator: RITCHIE EXPLORATION, INC.
Location-Downhole: DST #3 LKC 'I-J' 4,302' - 4,358'
Location-Surface: SEC 11-12S-34W LOGAN COUNTY

Test Information:

Company: DIAMOND TESTING
Representative: ROGER D. FRIEDLY
Supervisor: JEFF CHRISTIAN
Test Type: CONVENTIONAL Job Number:
Test Unit: NO. 1
Start Date: 2005/09/20 Start Time: 13:48:00
End Date: 2005/09/20 End Time: 20:42:00
Report Date: Prepared By:
Remarks: Qualified By:

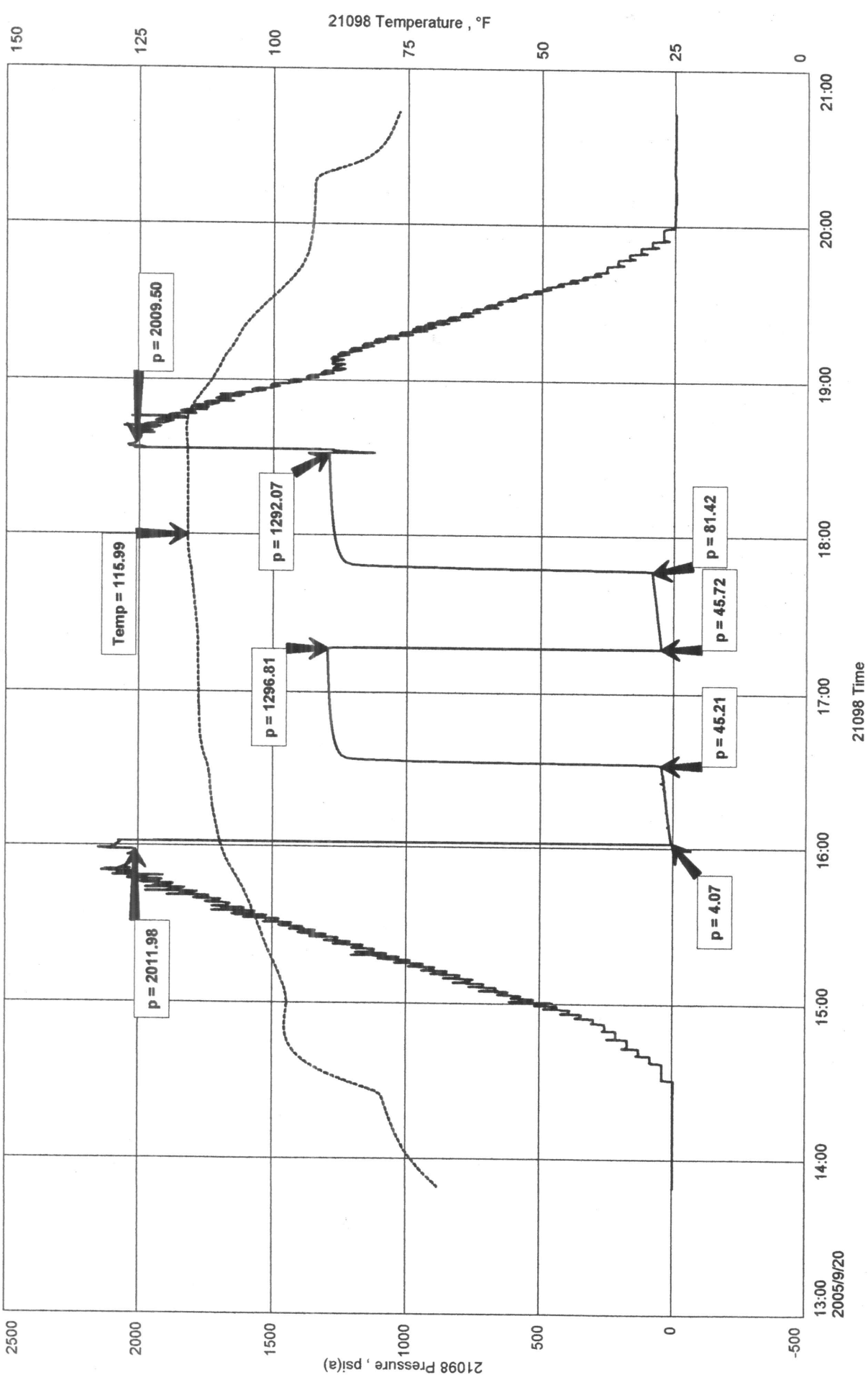
RECOVERED: 25' DM WITH A FEW OIL SPECKS
90' MW 41% MUD, 59% WTR CHLORIDES 20,000 Ppm
115' TOTAL FLUID

TOOL SAMPLE: 2% OIL, 24% WTR, 74% MUD

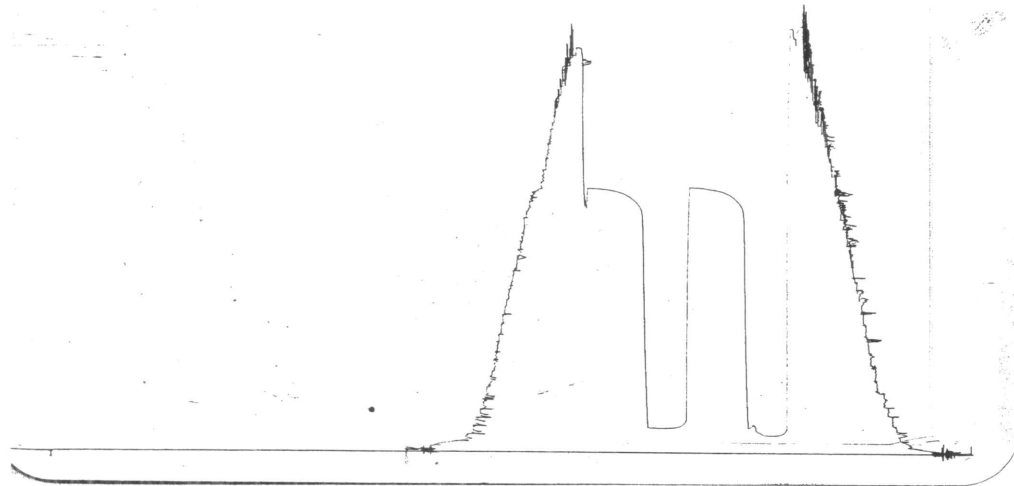
RITCHIE EXPLORATION, INC.
DST #3 LKC 'I-J' 4,302' - 4,358'
Start Test Date: 2005/09/20
Final Test Date: 2005/09/20

PETERSON 11A #1
Formation: DST #3 LKC 'I-J' 4,302' - 4,358'
Pool: WILDCA1

PETERSON 11A #1



DSW # 3 UNISAT 10301 4302-17000
 LKC 'I-J' LBC 4355



This is an actual photograph of recorder chart.

POINT	PRESSURE		PSI
	Field Reading	Elec. Office Reading	
(A) Initial Hydrostatic Mud	2012	2012	PSI
(B) First Initial Flow Pressure.....	4	4	PSI
(C) First Final Flow Pressure	45	45	PSI
(D) Initial Closed-in Pressure	1297	1297	PSI
(E) Second Initial Flow Pressure	46	46	PSI
(F) Second Final Flow Pressure.....	81	81	PSI
(G) Final Closed-in Pressure.....	1292	1292	PSI
(H) Final Hydrostatic Mud	2010	2010	PSI



11-12-34W

DIAMOND TESTING
 P.O. Box 157
 HOISINGTON, KANSAS 67544
 (620) 653-7550 • (800) 542-7313
 STC 21098.D171

Company Ritchie Exploration, Inc. Lease & Well No. Peterson 11A No. 1
 Elevation 3206KB Formation Lansing/Kansas City "K" Effective Pay -- Ft. Ticket No. 2060
 Date 9-21-05 Sec. 11 Twp. 12S Range 34W County Logan State Kansas

Test Approved By Jeff Christian Diamond Representative Roger D. Friedly

Formation Test No. 4 Interval Tested from 4,355 ft. to 4,373 ft. Total Depth 4,373 ft.
 Packer Depth 4,350 ft. Size 6 3/4 in. Packer Depth -- ft. Size -- in.
 Packer Depth 4,355 ft. Size 6 3/4 in. Packer Depth -- ft. Size -- in.
 Depth of Selective Zone Set ft.

Top Recorder Depth (Inside) 4,343 ft. Recorder Number 21098 Cap. 5,000 psi
 Bottom Recorder Depth (Outside) 4,370 ft. Recorder Number 13387 Cap. 4,000 psi
 Below Straddle Recorder Depth ft. Recorder Number Cap. psi

Drilling Contractor Murfin Drilling Co., Inc. - Rig 14 Drill Collar Length 566 ft. I.D. 2 1/4 in.
 Mud Type Chemical Viscosity 54 Weight Pipe Length -- ft. I.D. -- in.
 Weight 9.05 Water Loss 9.6 cc. Drill Pipe Length 3,764 ft. I.D. 3 1/2 in.
 Chlorides 5,000 P.P.M. Test Tool Length 25 ft. Tool Size 3 1/2 - IF in.
 Jars: Make Bowen Serial Number Not Run Anchor Length 18 ft. Size 4 1/2 - FH in.
 Did Well Flow? No Reversed Out No Surface Choke Size 1 in. Bottom Choke Size 5/8 in.
 Main Hole Size 7 7/8 in. Tool Joint Size 4 1/2 - XH in.

Blow: 1st Open: Weak surface blow throughout. No blow back during shut-in.
2nd Open: No blow. No blow back during shut-in.

Recovered 1 ft. of drilling mud (No show.) = .004920 bbls.
 Recovered ft. of
 Recovered ft. of
 Recovered ft. of
 Recovered ft. of
 Remarks Tool Sample Grind Out: 100%-drilling mud. No show.

Time Set Packer(s) 6:23 ~~P.M.~~ ^{A.M.} Time Started Off Bottom 8:23 ~~P.M.~~ ^{A.M.} Maximum Temperature 114°
 Initial Hydrostatic Pressure (A) 2042 P.S.I.
 Initial Flow Period Minutes 30 (B) 6 P.S.I. to (C) 5 P.S.I.
 Initial Closed In Period Minutes 30 (D) 10 P.S.I.
 Final Flow Period Minutes 30 (E) 6 P.S.I. to (F) 6 P.S.I.
 Final Closed In Period Minutes 30 (G) 7 P.S.I.
 Final Hydrostatic Pressure (H) 2041 P.S.I.



DIAMOND TESTING
 P. O. Box 157
 HOISINGTON, KANSAS 67544
 (800) 542-7313

Page 2 of 3 Pages

FLUID SAMPLE DATA

Company Ritchie Exploration, Inc.
 Lease & Well No. Peterson 11A No. 1
 Date 9-21-05 Sec. 11 Twp. 12 S Range 34 W
 Formation Test No. 4 Interval Tested From 4,355 ft. to 4,373 ft. Total Depth 4,373 ft.
 Formation Lansing/Kansas City "K"

	<u>MUD PIT</u>	<u>RECOVERY</u>	
Viscosity	<u>54</u> CP	<u>---</u> CP	
Weight	<u>9.05</u>	<u>---</u>	
Water Loss	<u>9.6</u> CC	<u>---</u> CC	
PH Factor	<u>9.5</u>	<u>---</u>	(Too small To Check)

	<u>RESISTIVITY</u>	<u>CHLORIDE CONTENT</u>
Recovery Water	<u>---</u> @ <u>---</u> °F.	<u>---</u> ppm
Recovery Mud	<u>---</u> @ <u>---</u> °F.	<u>---</u> ppm
Recovery Mud Filtrate	<u>---</u> @ <u>---</u> °F.	<u>---</u> ppm
Mud Pit Sample	<u>1.00</u> @ <u>64</u> °F.	<u>7,200</u> ppm
Mud Pit Sample Filtrate	<u>1.00</u> @ <u>68</u> °F.	<u>6,400</u> ppm

Sample Taken By ROGER D. FRIEDLY

Witness By JEFF CHRISTIAN

Remarks Pit filtrate triton dish chlorides were 5,000 Ppm

GENERAL INFORMATION

Client Information:

Company: RITCHIE EXPLORATION, INC.
Contact: CRAIG CAULK
Phone: Fax: e-mail:

Site Information:

Contact: JEFF CHRISTIAN
Phone: Fax: e-mail:

Well Information:

Name: PETERSON 11A #1
Operator: RITCHIE EXPLORATION, INC.
Location-Downhole: DST #4 LKC 'K' 4,355' - 4,373'
Location-Surface: SEC 11-12S-34W LOGAN COUNTY

Test Information:

Company: DIAMOND TESTING
Representative: ROGER D. FRIEDLY
Supervisor: JEFF CHRIATIAN
Test Type: CONVENTIONAL
Test Unit: NO. 1
Start Date: 2005/09/21
End Date: 2005/09/21
Report Date:
Job Number:
Start Time: 03:43:00
End Time: 10:21:00
Prepared By:
Qualified By:

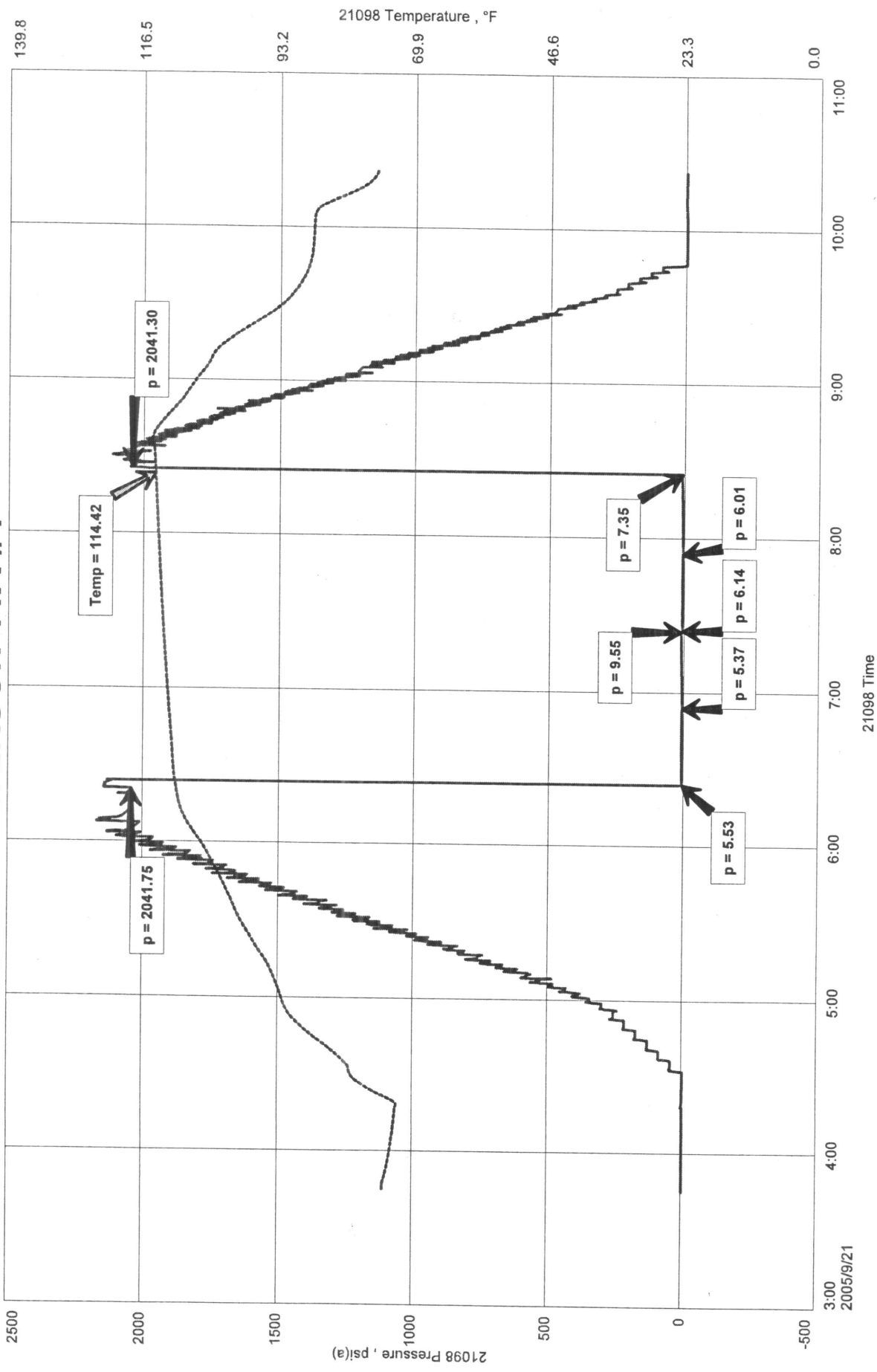
Remarks:

RECOVERED: 1' DRILLING MUD - NO SHOW
TOOL SAMPLE: 100% DM - NO SHOW

RITCHIE EXPLORATION, INC.
DST #4 LKC 'K' 4,355' - 4,373'
Start Test Date: 2005/09/21
Final Test Date: 2005/09/21

PETERSON 11A #
Formation: DST #4 LKC 'K' 4,355' - 4,373'
Pool: WILDCA

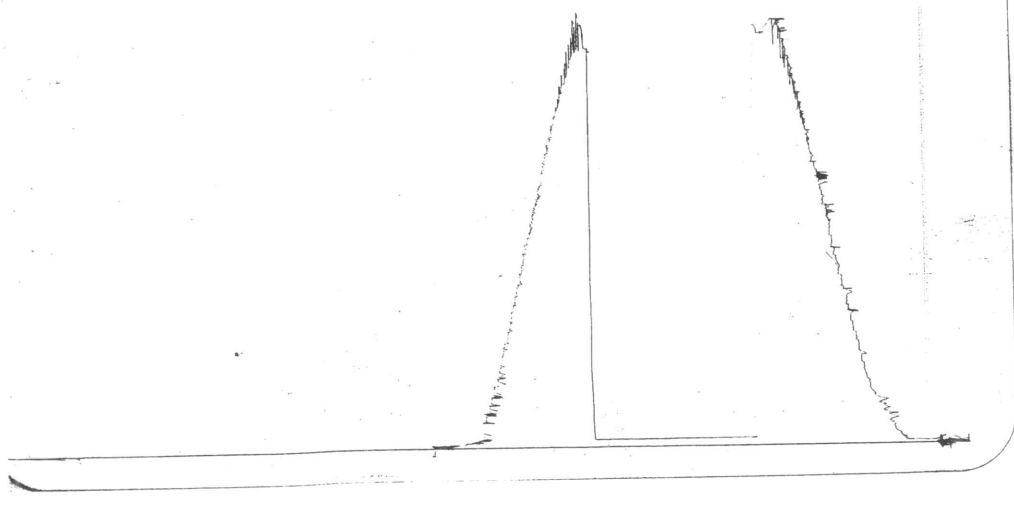
PETERSON 11A #1



SCANNED
KGS Wichita Office

DST #4 Outside 13387
LCC 'K'

4355-4373
LCC 4370



This is an actual photograph of recorder chart.

POINT	PRESSURE		Elec. Office Reading	PSI
	Field Reading			
(A) Initial Hydrostatic Mud	2042		2042	PSI
(B) First Initial Flow Pressure	6		6	PSI
(C) First Final Flow Pressure	5		5	PSI
(D) Initial Closed-in Pressure	10		10	PSI
(E) Second Initial Flow Pressure	6		6	PSI
(F) Second Final Flow Pressure	6		6	PSI
(G) Final Closed-in Pressure	7		7	PSI
(H) Final Hydrostatic Mud	2041		2041	PSI

COMPANY Ritchie Exploration, Inc. LEASE AND WELL NO. Peterson 11A No. 1 SEC. 11 TWP. 12S RGE. 34W TEST NO. 4 DATE 9-21



11-12-34W

DIAMOND TESTING

P.O. Box 157
HOISINGTON, KANSAS 67544
(620) 653-7550 • (800) 542-7313
STC 21098.D172

Page 1 of 2 Pages

Company Ritchie Exploration, Inc. Lease & Well No. Peterson 11A No. 1
Elevation 3206KB Formation Cherokee/Johnson Effective Pay -- Ft. Ticket No. 2061
Date 9-23-05 Sec. 11 Twp. 12S Range 34W County Logan State Kansas

Test Approved By Jeff Christian Diamond Representative Roger D. Friedly

Formation Test No. 5 Interval Tested from 4,652 ft. to 4,730 ft. Total Depth 4,730 ft.

Packer Depth 4,647 ft. Size 6 3/4 in. Packer Depth -- ft. Size -- in.

Packer Depth 4,652 ft. Size 6 3/4 in. Packer Depth -- ft. Size -- in.

Depth of Selective Zone Set ft.

Top Recorder Depth (Inside) 4,640 ft. Recorder Number 21098 Cap. 5,000 psi

Bottom Recorder Depth (Outside) 4,727 ft. Recorder Number 13387 Cap. 4,000 psi

Below Straddle Recorder Depth ft. Recorder Number Cap. psi

Drilling Contractor Murfin Drilling Co., Inc. - Rig 14 Drill Collar Length 566 ft. I.D. 2 1/4 in.

Mud Type Chemical Viscosity 59 Weight Pipe Length -- ft. I.D. -- in.

Weight 9.1 Water Loss 8.0 cc. Drill Pipe Length 4,061 ft. I.D. 3 1/2 in.

Chlorides 4,000 P.P.M. Test Tool Length 25 ft. Tool Size 3 1/2 - IF in.

Jars: Make Bowen Serial Number Not Run Anchor Length 47' perf. w/ 31' drill pipe Size 4 1/2 - FH in.

Did Well Flow? No Reversed Out No Surface Choke Size 1 in. Bottom Choke Size 5/8 in.

Main Hole Size 7 7/8 in. Tool Joint Size 4 1/2 - XH in.

Blow: 1st Open: Weak, 1/8 in., blow throughout. No blow back during shut-in.
2nd Open: No blow. No blow back during shut-in.

Recovered 5 ft. of drilling mud with a few oil specks = .024600 bbls.

Recovered ft. of

Recovered ft. of

Recovered ft. of

Recovered ft. of

Remarks Tool Sample Grind Out: 100%-drilling mud with a few oil specks

Time Set Packer(s) 2:02 ~~P.M.~~ ^{A.M.} Time Started Off Bottom 4:02 ~~P.M.~~ ^{A.M.} Maximum Temperature 120°

Initial Hydrostatic Pressure (A) 2199 P.S.I.

Initial Flow Period Minutes 30 (B) 6 P.S.I. to (C) 11 P.S.I.

Initial Closed In Period Minutes 30 (D) 61 P.S.I.

Final Flow Period Minutes 30 (E) 10 P.S.I. to (F) 12 P.S.I.

Final Closed In Period Minutes 30 (G) 42 P.S.I.

Final Hydrostatic Pressure (H) 2191 P.S.I.



DIAMOND TESTING
 P. O. Box 157
 HOISINGTON, KANSAS 67544
 (800) 542-7313

Page 2 of 2 Pages

FLUID SAMPLE DATA

Company Ritchie Exploration, Inc.
 Lease & Well No. Peterson 11A No. 1
 Date 9-23-05 Sec. 11 Twp. 12 S Range 34 W
 Formation Test No. 5 Interval Tested From 4,652 ft. to 4,730 ft. Total Depth 4,730 ft.
 Formation Cherokee/Johnson

	<u>MUD PIT</u>	<u>RECOVERY</u>	
Viscosity	<u>59</u> CP	<u>--</u> CP	
Weight	<u>9.1</u>	<u>--</u>	
Water Loss	<u>8.0</u> CC	<u>--</u> CC	
PH Factor	<u>10.5</u>	<u>--</u>	(Too Small To Check)

	<u>RESISTIVITY</u>	<u>CHLORIDE CONTENT</u>
Recovery Water	<u>-- @ -- °F.</u>	<u>-- ppm</u>
Recovery Mud	<u>-- @ -- °F.</u>	<u>-- ppm</u>
Recovery Mud Filtrate	<u>-- @ -- °F.</u>	<u>-- ppm</u>
Mud Pit Sample	<u>1.20 @ 56 °F.</u>	<u>6,600 ppm</u>
Mud Pit Sample Filtrate	<u>1.20 @ 60 °F.</u>	<u>5,800 ppm</u>

Sample Taken By ROGER D. FRIEDLY

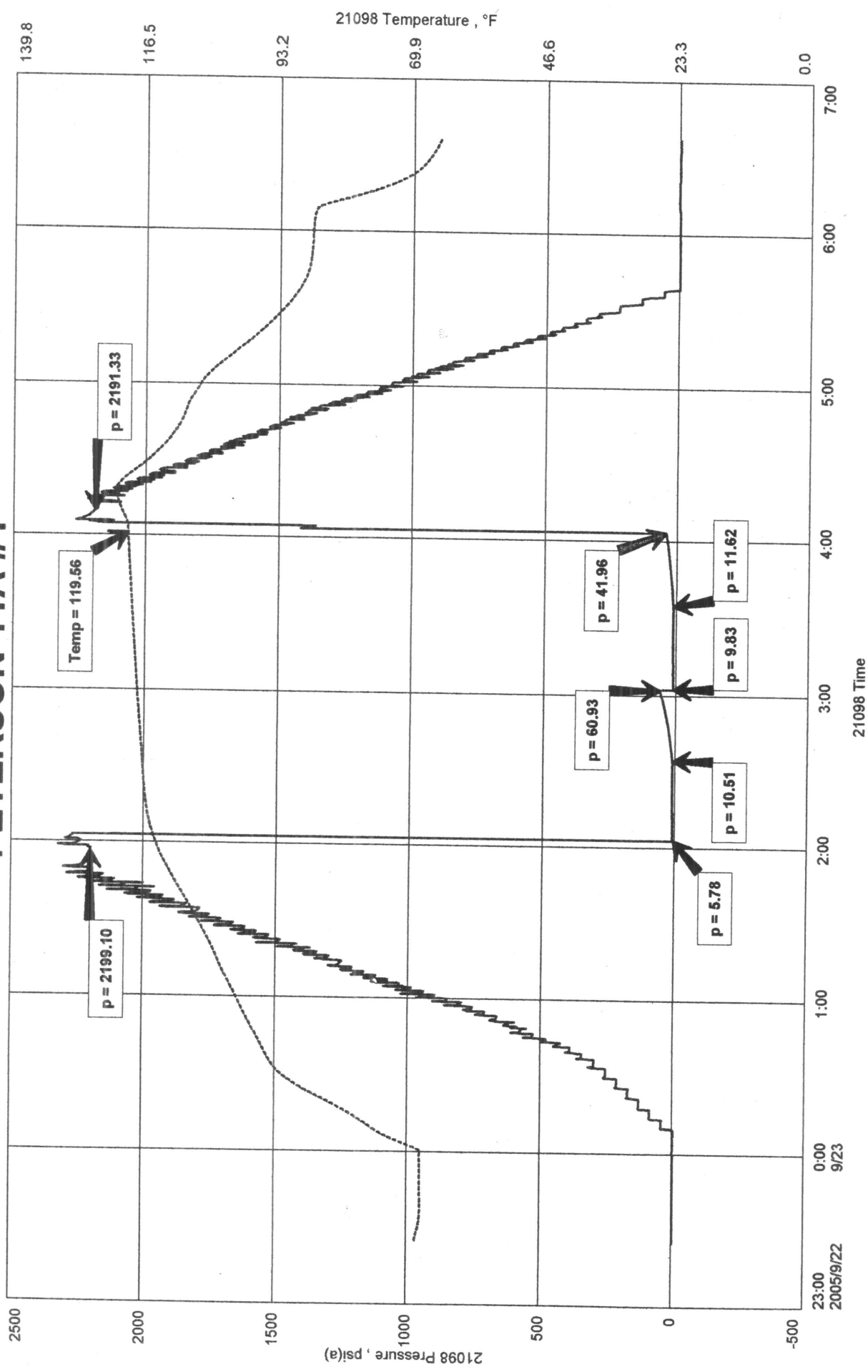
Witness By JEFF CHRISTIAN

Remarks Pit filtrate triton dish chlorides were 4,000 Ppm

RITCHIE EXPLORATION, INC.
DST #5 CHEROKEE / JOHNSON 4,652' - 4,730'
Start Test Date: 2005/09/22
Final Test Date: 2005/09/23

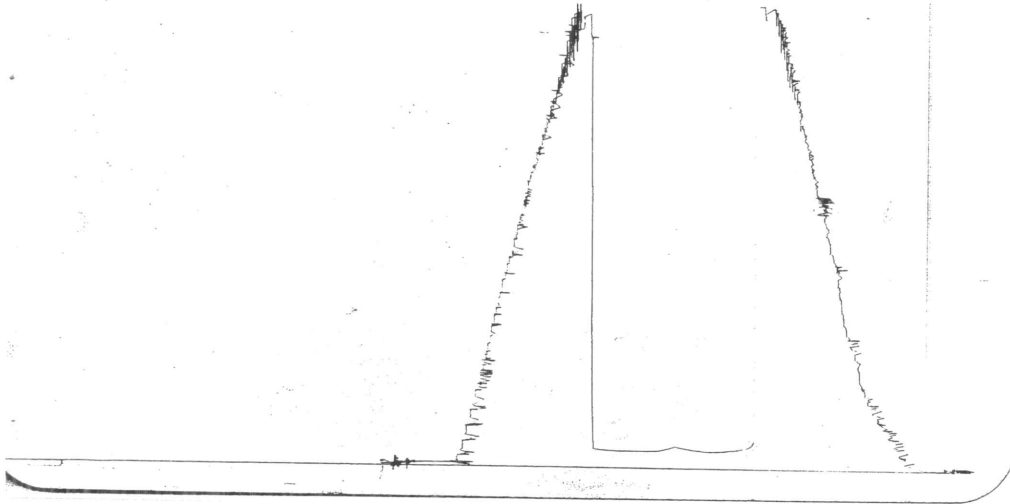
PETERSON 11A #1
Formation: DST #5 CHEROKEE / JOHNSON 4,652' - 4,730'
Pool: WILDCA

PETERSON 11A #1



DST# 5 Outside 13387
Chero/Johnson

4652-4730
loc 4727



This is an actual photograph of recorder chart.

POINT	PRESSURE		Elec. Office Reading	PSI
	Field Reading			
(A) Initial Hydrostatic Mud	2199	2199	2199	PSI
(B) First Initial Flow Pressure	6	6	6	PSI
(C) First Final Flow Pressure	11	11	11	PSI
(D) Initial Closed-in Pressure	61	61	61	PSI
(E) Second Initial Flow Pressure	10	10	10	PSI
(F) Second Final Flow Pressure	12	12	12	PSI
(G) Final Closed-in Pressure	42	42	42	PSI
(H) Final Hydrostatic Mud	2191	2191	2191	PSI