

WELL NAME: Schoenthaler #3
COMPANY: AFG Energy, Inc
LOCATION: 34-12S-21W
Trego County Kansas
DATE: 06/26/96



TRILOBITE TESTING L.L.C.

OPERATOR : AFG Energy Inc DATE 6/23/96
 WELL NAME: Schoenthaler #3 KB 2225.00 ft TICKET NO: 9385 DST #1
 LOCATION : 34-12S-21W Trego Cty KS GR 2217.00 ft FORMATION: LKC A-E
 INTERVAL : 3478.00 To 3570.00 ft TD 3570.00 ft TEST TYPE: CONVENTIONAL

RECORDER DATA

Mins		Field	1	2	3	4	TIME DATA-----
PF 15	Rec.	13849	13849	13754			PF Fr. 0443 to 0458 hr
SI 30	Range(Psi)	4375.0	4375.0	4000.0	0.0	0.0	IS Fr. 0458 to 0528 hr
SF 45	Clock(hrs)	12	12	12			SF Fr. 0528 to 0613 hr
FS 30	Depth(ft)	3565.0	3565.0	3482.0	0.0	0.0	FS Fr. 0613 to 0643 hr

	Field	1	2	3	4	
A. Init Hydro	1732.0	1741.0	0.0	0.0	0.0	T STARTED 0230 hr
B. First Flow	66.0	88.0	0.0	0.0	0.0	T ON BOTM 0435 hr
B1. Final Flow	66.0	88.0	0.0	0.0	0.0	T OPEN 0443 hr
C. In Shut-in	808.0	809.0	0.0	0.0	0.0	T PULLED 0643 hr
D. Init Flow	88.0	107.0	0.0	0.0	0.0	T OUT 0830 hr
E. Final Flow	122.0	134.0	0.0	0.0	0.0	
F. Fl Shut-in	764.0	775.0	0.0	0.0	0.0	
G. Final Hydro	1740.0	1714.0	0.0	0.0	0.0	
Inside/Outside	0	0	I			

TOOL DATA-----
 Tool Wt. 0.00 lbs
 Wt Set On Packer 20000.00 lbs
 Wt Pulled Loose 50000.00 lbs
 Initial Str Wt 36000.00 lbs
 Unseated Str Wt 36000.00 lbs
 Bot Choke 0.75 in
 Hole Size 7.88 in
 D Col. ID 0.00 in
 D. Pipe ID 3.82 in
 D.C. Length 0.00 ft
 D.P. Length 3479.00 ft

RECOVERY

Tot Fluid 210.00 ft of 0.00 ft in DC and 210.00 ft in DP
 60.00 ft of Gas in pipe
 90.00 ft of Slightly oil cut mud
 5% gas - 5% oil - 90% mud
 120.00 ft of Drilling mud with trace of oil
 Trc. oil - 100% mud

SALINITY 0.00 P.P.M. A.P.I. Gravity 0.00

BLOW DESCRIPTION

Initial Flow
 Weak surface blow built to 6"

Initial Shutin
 No return

Final Flow
 Weak surface return built to 9"

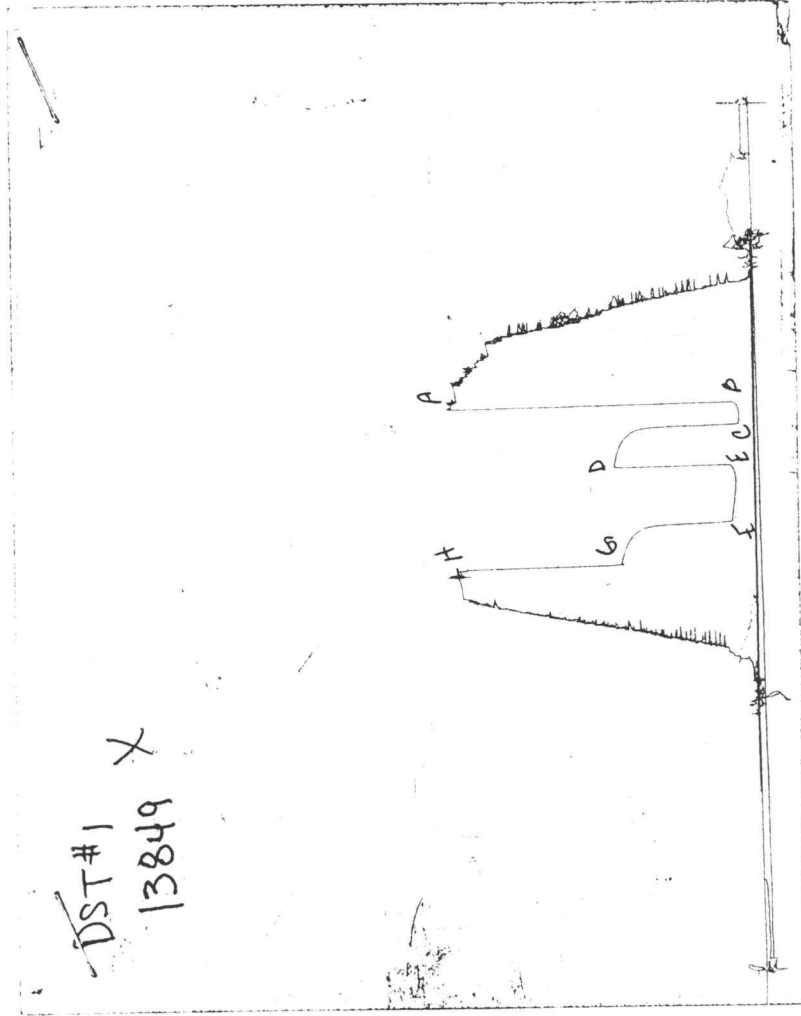
Final Shutin
 No return

SAMPLES:
 SENT TO:

MUD DATA-----
 Mud Type Chemical
 Weight 9.10 lb/c
 Vis. 50.00 S/L
 W.L. 14.00 in3
 F.C. 0.00 in
 Mud Drop
 Amt. of fill 0.00 ft
 Btm. H. Temp. 115.00 F
 Hole Condition good
 % Porosity 0.00
 Packer Size 6.75 in
 No. of Packers 2
 Cushion Amt. 0.00
 Cushion Type
 Reversed Out
 Tool Chased
 Tester Rod Steinbrink
 Co. Rep. Ed Glassman
 Contr. Discovery
 Rig #
 Unit #
 Pump T.

Test Successful: Y

CHART PAGE



This is a photocopy of the actual AK-1 recorder chart

TRILOBITE TESTING L.L.C.

P.O. Box 362 • Hays, Kansas 67601

Test Ticket

No 9385

Well Name & No. <u>Schwanthaler #3</u>	Test No. <u>1</u>	Date <u>6-23-96</u>
Company <u>AFG Energy Inc</u>	Zone Tested <u>LKC - A-E</u>	
Address <u>Box 458 Hays Ks 67601</u>	Elevation <u>2225</u>	KB <u>2217</u> GL
Co. Rep / Geo. <u>Ed Glassman</u>	Cont. <u>Discovery</u>	Est. Ft. of Pay <u> </u> Por. <u> </u> %
Location: Sec. <u>34</u>	Twp. <u>12s</u>	Rge. <u>21w</u> Co. <u>Trego</u> State <u>Ks</u>
No. of Copies <u> </u>	Distribution Sheet (Y, N) <u>N</u>	Turnkey (Y, N) <u>N</u> Evaluation (Y, N) <u> </u>

Interval Tested <u>3478-3570</u>	Initial Str Wt./Lbs. <u>36,000</u>	Unseated Str Wt./Lbs. <u>36,000</u>
Anchor Length <u>92</u>	Wt. Set Lbs. <u>20,000</u>	Wt. Pulled Loose/Lbs. <u>50,000</u>
Top Packer Depth <u>3473</u>	Hole Size — 7 7/8" <u> </u>	Rubber Size — 6 3/4" <u> </u>
Bottom Packer Depth <u>3478</u>	Wt. Pipe I.D. — 2.7 Ft. Run <u> </u>	<u> </u>
Total Depth <u>3570</u>	Drill Collar — 2.25 Ft. Run <u> </u>	<u> </u>
Mud Wt. <u>9.1</u> LCM <u> </u> Vis. <u>50</u> WL <u>14.0</u>	Drill Pipe Size <u>4 1/2 XH</u>	Ft. Run <u>3479'</u>
Blow Description <u>IF: Weak surface blow built to 6"</u>		
<u>ISI: No return.</u>		
<u>FF: Weak surface return built to 9"</u>		
<u>FSI: No return.</u>		

Recovery — Total Feet	Ft. in DC	Ft. in WP	Ft. in DP	%gas	%oil	%water	%mud
Rec. <u>60'</u>	Feet Of <u>GIP</u>	<u> </u>	<u>210'</u>	<u> </u>	<u> </u>	<u> </u>	<u> </u>
Rec. <u>90'</u>	Feet Of <u>SDCM</u>	<u>5</u>	<u> </u>	<u>5</u>	<u> </u>	<u> </u>	<u>90</u>
Rec. <u> </u>	Feet Of <u> </u>	<u> </u>	<u> </u>	<u> </u>	<u> </u>	<u> </u>	<u> </u>
Rec. <u>120'</u>	Feet Of <u>Drilg Mud w/Trc.</u>	<u> </u>	<u> </u>	<u>Trc.</u>	<u> </u>	<u> </u>	<u>100</u>
Rec. <u> </u>	Feet Of <u>of Oil</u>	<u> </u>	<u> </u>	<u> </u>	<u> </u>	<u> </u>	<u> </u>

BHT 115° °F Gravity °API D@ °F Corrected Gravity °API

RW @ °F Chlorides ppm Recovery Chlorides 4,000 ppm System

(A) Initial Hydrostatic Mud <u>1732</u> PSI	Recorder No. <u>137541</u>	T-Started <u>0443 0230</u>
(B) First Initial Flow Pressure <u>66</u> PSI	@ (depth) <u>3482</u>	T-Open <u>0443</u>
(C) First Final Flow Pressure <u>66</u> PSI	Recorder No. <u>13849</u>	T-Pulled <u>0643</u>
(D) Initial Shut-in Pressure <u>808</u> PSI	@ (depth) <u>3565</u>	T-Out <u>0830</u>
(E) Second Initial Flow Pressure <u>88</u> PSI	Recorder No. <u> </u>	<u> </u>
(F) Second Final Flow Pressure <u>122</u> PSI	@ (depth) <u> </u>	<u> </u>
(G) Final Shut-in Pressure <u>764</u> PSI	Initial Opening <u>15</u>	Test <u>600</u>
(H) Final Hydrostatic Mud <u>1710</u> PSI	Initial Shut-in <u>30</u>	Jars <u> </u>

Final Flow 45 Safety Joint

Final Shut-in 30 Straddle

 Circ. Sub X N/C

 Sampler

Extra Packer

Elect. Rec.

Other

TOTAL PRICE \$ 400

TRILOBITE TESTING L.L.C. SHALL NOT BE LIABLE FOR DAMAGE OF ANY KIND OF THE PROPERTY OR PERSONNEL OF THE ONE FOR WHOM A TEST IS MADE, OR FOR ANY LOSS SUFFERED OR SUSTAINED, DIRECTLY OR INDIRECTLY, THROUGH THE USE OF ITS EQUIPMENT, OR ITS STATEMENTS OR OPINION CONCERNING THE RESULTS OF ANY TEST. TOOLS LOST OR DAMAGED IN THE HOLE SHALL BE PAID FOR AT COST BY THE PARTY FOR WHOM THE TEST IS MADE.

Approved By Ed Glassman

Our Representative Rod Steinbrink



TRILOBITE TESTING L.L.C.

OPERATOR : AFG Energy Inc DATE 6/23/96
 WELL NAME: Schoenthaler #3 KB 2224.00 ft TICKET NO: 9386 DST #2
 LOCATION : 34-12S-21W Trego Cty KS GR 2216.00 ft FORMATION: Lans "E-F-G"
 INTERVAL : 3575.00 To 3605.00 ft TD 3605.00 ft TEST TYPE: CONVENTIONAL

RECORDER DATA

Mins	Field	1	2	3	4	TIME DATA-----
PF 15 Rec.	13849	13849	13339			PF Fr. 1653 to 1708 hr
SI 30 Range(Psi)	4375.0	4375.0	4000.0	0.0	0.0	IS Fr. 1708 to 1738 hr
SF 45 Clock(hrs)	12	12	12			SF Fr. 1738 to 1823 hr
FS 30 Depth(ft)	3595.0	3595.0	3600.0	0.0	0.0	FS Fr. 1823 to 1853 hr

	Field	1	2	3	4	
A. Init Hydro	1776.0	1789.0	0.0	0.0	0.0	T STARTED 1530 hr
B. First Flow	66.0	59.0	0.0	0.0	0.0	T ON BOTM 1645 hr
B1. Final Flow	66.0	59.0	0.0	0.0	0.0	T OPEN 1653 hr
C. In Shut-in	676.0	673.0	0.0	0.0	0.0	T PULLED 1853 hr
D. Init Flow	111.0	98.0	0.0	0.0	0.0	T OUT 2030 hr
E. Final Flow	144.0	141.0	0.0	0.0	0.0	
F. Fl Shut-in	632.0	635.0	0.0	0.0	0.0	
G. Final Hydro	1754.0	1738.0	0.0	0.0	0.0	TOOL DATA-----
Inside/Outside	0	0	I			Tool Wt. 0.00 lbs

RECOVERY

Tot Fluid 300.00 ft of 30.00 ft in DC and 270.00 ft in DP
 2.00 ft of Free oil
 58.00 ft of Watery mud Trc. oil - 35% water - 65% mud
 240.00 ft of muddy water 85% water - 15% mud

Wt Set On Packer 25000.00 lbs
 Wt Pulled Loose 40000.00 lbs
 Initial Str Wt 38000.00 lbs
 Unseated Str Wt 38000.00 lbs
 Bot Choke 0.75 in
 Hole Size 7.88 in
 D Col. ID 2.25 in
 D. Pipe ID 3.82 in
 D.C. Length 30.00 ft
 D.P. Length 3541.00 ft

SALINITY 95000.00 P.P.M. A.P.I. Gravity 0.00

BLOW DESCRIPTION

Initial Flow
 Weak to fair blow built to 8"

Initial Shutin
 No return

Final Flow
 Weak to fair blow off bottom in
 25 minutes

Final Shutin
 No return

SAMPLES:
 SENT TO:

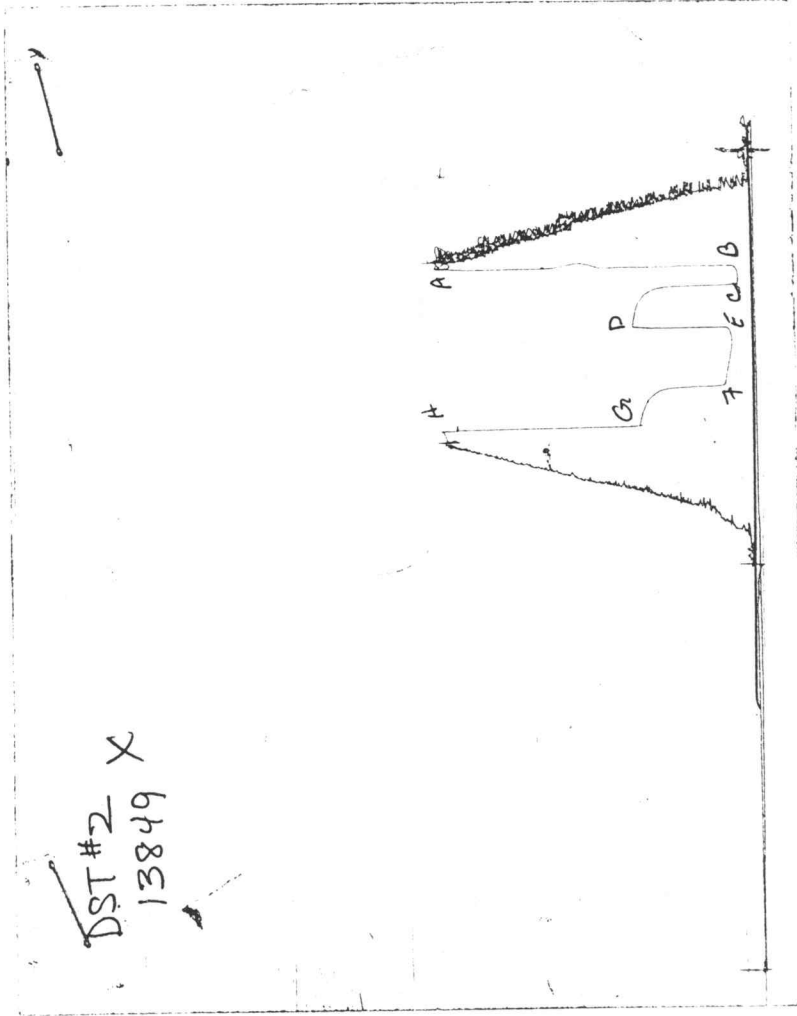
MUD DATA-----
 Mud Type Chemical
 Weight 9.30 lb/c
 Vis. 50.00 S/L
 W.L. 8.40 in3
 F.C. 0.00 in
 Mud Drop

Amt. of fill 0.00 ft
 Btm. H. Temp. 115.00 F
 Hole Condition good
 % Porosity 0.00
 Packer Size 6.75 in
 No. of Packers 2
 Cushion Amt. 0.00
 Cushion Type

Reversed Out
 Tool Chased
 Tester Rod Steinbrink
 Co. Rep. Ed Glassman
 Contr. Discovery
 Rig #
 Unit #
 Pump T.

Test Successful: Y

CHART PAGE



This is a photocopy of the actual AK-1 recorder chart

TRILOBITE TESTING L.L.C.

P.O. Box 362 • Hays, Kansas 67601

Test Ticket

No 9386

Well Name & No.	Schoenthaler #3	Test No.	2	Date	6-23-96				
Company	AFG Energy, Inc.	Zone Tested	Lans	E.F.G					
Address	P.O. Box 458 Hays, KS. 67601	Elevation	2224	KB	2216 GL				
Co. Rep / Geo.	Ed Glassman	Cont.	Discovery #1	Est. Ft. of Pay	Por. %				
Location: Sec.	34	Twp.	12 ^S	Rge.	21 ^W	Co.	Ellis Twp	State	KS.
No. of Copies	Nml	Distribution Sheet (Y, N)	N	Turnkey (Y, N)	N	Evaluation (Y, N)			

Interval Tested	3575 - 3605	Initial Str Wt./Lbs.	38,000	Unseated Str Wt./Lbs.	38,000			
Anchor Length	30'	Wt. Set Lbs.	25,000	Wt. Pulled Loose/Lbs.	40,000			
Top Packer Depth	3570	Hole Size — 7 7/8"		Rubber Size — 6 3/4"				
Bottom Packer Depth	3575	Wt. Pipe I.D. — 2.7 Ft. Run						
Total Depth	3605	Drill Collar — 2.25 Ft. Run	4" H-90	30'				
Mud Wt.	9.3 LCM	Vis.	50 WL	B.4	Drill Pipe Size	4 1/2" XH	Ft. Run	3541'
Blow Description	IF: Weak to fair blow built to 8"							
	ISI: No return							
	FF: Weak to fair blow off bttm in 25 mins							
	FSI: No return							

Recovery — Total Feet	300'	Ft. in DC	30'	Ft. in WP		Ft. in DP	270'
Rec.	2'	Feet Of	Free Oil	%gas	%oil	%water	%mud
Rec.	58'	Feet Of	WM	%gas	Trc	%oil	35 %water 65 %mud
Rec.	240'	Feet Of	MW	%gas	%oil	85 %water	15 %mud
Rec.		Feet Of		%gas	%oil	%water	%mud
Rec.		Feet Of		%gas	%oil	%water	%mud

BHT 115° °F Gravity _____ °API D@ _____ °F Corrected Gravity _____ °API
RW .07 @ 84° °F Chlorides 95,000 ppm Recovery Chlorides 4,000 ppm System

(A) Initial Hydrostatic Mud	1776	PSI	Recorder No.	13849	T-Started	1530
(B) First Initial Flow Pressure	66	PSI	@ (depth)	3595	T-Open	1653
(C) First Final Flow Pressure	66	PSI	Recorder No.	13339	T-Pulled	1853
(D) Initial Shut-in Pressure	676	PSI	@ (depth)	3600	T-Out	2030
(E) Second Initial Flow Pressure	111	PSI	Recorder No.			
(F) Second Final Flow Pressure	144	PSI	@ (depth)			
(G) Final Shut-in Pressure	632	PSI	Initial Opening	15	Test	600
(H) Final Hydrostatic Mud	1754	PSI	Initial Shut-in	30	Jars	

Final Flow 45 Safety Joint _____
Final Shut-in 30 Straddle _____
_____ Circ. Sub X N/C
_____ Sampler _____

Approved By Ed Glassman
Our Representative Rod Steinbrink

Extra Packer _____
Elect. Rec. _____
Other _____
TOTAL PRICE \$ 600

TRILOBITE TESTING L.L.C. SHALL NOT BE LIABLE FOR DAMAGE OF ANY KIND OF THE PROPERTY OR PERSONNEL OF THE ONE FOR WHOM A TEST IS MADE, OR FOR ANY LOSS SUFFERED OR SUSTAINED, DIRECTLY OR INDIRECTLY, THROUGH THE USE OF ITS EQUIPMENT, OR ITS STATEMENTS OR OPINION CONCERNING THE RESULTS OF ANY TEST. TOOLS LOST OR DAMAGED IN THE HOLE SHALL BE PAID FOR AT COST BY THE PARTY FOR WHOM THE TEST IS MADE.



TRILOBITE TESTING L.L.C.

OPERATOR : AFG Energy, Inc
 WELL NAME: Schoenthaler #3
 LOCATION : 34-12S-21W, Trego Cty KS
 INTERVAL : 3623.00 To 3690.00 ft

DATE 06/24/96
 KB 2224.00 ft
 GR 2216.00 ft
 TD 3690.00 ft

TICKET NO: 9387
 FORMATION: Lansing H - I - J
 DST #3
 TEST TYPE: CONV

RECORDER DATA

Mins	Field	1	2	3	4	TIME DATA-----
PF 15 Rec.	13339	13339	13849			PF Fr. 0825 to 0840 hr
SI 30 Range(Psi)	4375.0	4375.0	4000.0	0.0	0.0	IS Fr. 0840 to 0910 hr
SF 15 Clock(hrs)	12	12	12			SF Fr. 0910 to 0925 hr
FS 30 Depth(ft)	3653.0	3653.0	3685.0	0.0	0.0	FS Fr. 0925 to 0955 hr

	Field	1	2	3	4	
A. Init Hydro	1852.0	1875.0	0.0	0.0	0.0	T STARTED 0700 hr
B. First Flow	44.0	34.0	0.0	0.0	0.0	T ON BOTM 0823 hr
B1. Final Flow	44.0	34.0	0.0	0.0	0.0	T OPEN 0825 hr
C. In Shut-in	885.0	874.0	0.0	0.0	0.0	T PULLED 0955 hr
D. Init Flow	44.0	38.0	0.0	0.0	0.0	T OUT 1115 hr
E. Final Flow	44.0	38.0	0.0	0.0	0.0	
F. Fl Shut-in	530.0	599.0	0.0	0.0	0.0	
G. Final Hydro	1819.0	1814.0	0.0	0.0	0.0	
Inside/Outside	I	I	O			

TOOL DATA-----

Tool Wt.	0.00 lbs
Wt Set On Packer	20000.00 lbs
Wt Pulled Loose	0.00 lbs
Initial Str Wt	38000.00 lbs
Unseated Str Wt	38000.00 lbs
Bot Choke	0.75 in
Hole Size	7.88 in
D Col. ID	2.25 in
D. Pipe ID	3.80 in
D.C. Length	30.00 ft
D.P. Length	3633.00 ft

RECOVERY

Tot Fluid 5.00 ft of 5.00 ft in DC and 0.00 ft in DP
 5.00 ft of Drilling mud

SALINITY 0.00 P.P.M. A.P.I. Gravity 0.00

BLOW DESCRIPTION

Initial Flow -
 Weak surface blow almost died in 15 minutes

Final Flow -
 No return blow

MUD DATA-----

Mud Type	Chemical
Weight	9.40 lb/cf
Vis.	47.00 S/L
W.L.	9.60 in3
F.C.	0.00 in
Mud Drop	
Amt. of fill	0.00 ft
Btm. H. Temp.	112.00 F
Hole Condition	
% Porosity	0.00
Packer Size	6.75 in
No. of Packers	2
Cushion Amt.	0.00
Cushion Type	
Reversed Out	
Tool Chased	
Tester	Rod Steinbrink
Co. Rep.	Ed Glassman
Contr.	Discovery
Rig #	1
Unit #	
Pump T.	

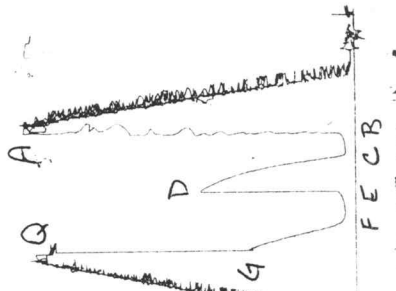
SAMPLES:
 SENT TO:

Test Successful: Y

CHART PAGE

DST #3

13849 X



This is a photocopy of the actual AK-1 recorder chart

TRILOBITE TESTING L.L.C.

P.O. Box 362 • Hays, Kansas 67601

Test Ticket

N^o 9387

Well Name & No.	<u>Schoenthaler #3</u>	Test No.	<u>3</u>	Date	<u>6-24-96</u>
Company	<u>AFG Energy Inc.</u>	Zone Tested	<u>Lans. H-I-J</u>		
Address	<u>P.O. Box 458 Hays, KS. 67601</u>	Elevation	<u>2224</u>	KB	<u>2216</u> GL
Co. Rep / Geo.	<u>Ed Glassman</u>	Cont.	<u>Discovery #1</u>	Est. Ft. of Pay	<u> </u> Por. <u> </u> %
Location: Sec.	<u>34</u>	Twp.	<u>12^S</u>	Rge.	<u>21^W</u> Co. <u>Trego</u> State <u>KS.</u>
No. of Copies	<u> </u>	Distribution Sheet (Y, N)	<u>N</u>	Turnkey (Y, N)	<u>N</u> Evaluation (Y, N) <u> </u>

Interval Tested	<u>3623 - 3690</u>	Initial Str Wt./Lbs.	<u>38,000</u>	Unseated Str Wt./Lbs.	<u>38,000</u>
Anchor Length	<u>67'</u>	Wt. Set Lbs.	<u>20,000</u>	Wt. Pulled Loose/Lbs.	<u> </u>
Top Packer Depth	<u>3618</u>	Hole Size — 7 7/8"	<u> </u>	Rubber Size — 6 3/4"	<u> </u>
Bottom Packer Depth	<u>3623</u>	Wt. Pipe I.D. — 2.7 Ft. Run	<u> </u>		<u> </u>
Total Depth	<u>3690</u>	Drill Collar — 2.25 Ft. Run	<u>4" H-90</u>	<u>30'</u>	
Mud Wt. <u>9.4</u> LCM <u>—</u> Vis. <u>47</u> WL <u>9.6</u>		Drill Pipe Size	<u>4 1/2" XH</u>	Ft. Run	<u>3633'</u>
Blow Description	<u>IF: Weak surface blow almost died @ 15 mins</u>				

FF: No return blow.

Recovery — Total Feet	<u>5'</u>	Ft. in DC	<u> </u>	Ft. in WP	<u> </u>	Ft. in DP	<u> </u>
Rec.	<u> </u>	Feet Of	<u> </u>	%gas	<u> </u>	%oil	<u> </u>
Rec.	<u> </u>	Feet Of	<u> </u>	%water	<u> </u>	%mud	<u> </u>
Rec.	<u>5'</u>	Feet Of	<u>Drlg Mud</u>	%gas	<u> </u>	%oil	<u> </u>
Rec.	<u> </u>	Feet Of	<u> </u>	%water	<u> </u>	%mud	<u> </u>
Rec.	<u> </u>	Feet Of	<u> </u>	%gas	<u> </u>	%oil	<u> </u>
Rec.	<u> </u>	Feet Of	<u> </u>	%water	<u> </u>	%mud	<u> </u>

BHT 112° °F Gravity °API D@ °F Corrected Gravity °API
RW @ °F Chlorides ppm Recovery Chlorides 54,000 ppm System

(A) Initial Hydrostatic Mud	<u>1852</u>	PSI	Recorder No.	<u>13849</u>	T-Started	<u>0700</u>
(B) First Initial Flow Pressure	<u>44</u>	PSI	@ (depth)	<u>3653</u>	T-Open	<u>0825</u>
(C) First Final Flow Pressure	<u>44</u>	PSI	Recorder No.	<u>13339</u>	T-Pulled	<u>9055</u>
(D) Initial Shut-in Pressure	<u>885</u> 880	PSI	@ (depth)	<u>3685</u>	T-Out	<u>1115</u>
(E) Second Initial Flow Pressure	<u>44</u>	PSI	Recorder No.	<u> </u>		
(F) Second Final Flow Pressure	<u>44</u>	PSI	@ (depth)	<u> </u>		
(G) Final Shut-in Pressure	<u>530</u>	PSI	Initial Opening	<u>15</u>	Test	<u>600</u>
(H) Final Hydrostatic Mud	<u>1819</u>	PSI	Initial Shut-in	<u>30</u>	Jars	<u> </u>

Final Flow 15 Safety Joint
Final Shut-in 30 Straddle

TRILOBITE TESTING L.L.C. SHALL NOT BE LIABLE FOR DAMAGE OF ANY KIND OF THE PROPERTY OR PERSONNEL OF THE ONE FOR WHOM A TEST IS MADE, OR FOR ANY LOSS SUFFERED OR SUSTAINED, DIRECTLY OR INDIRECTLY, THROUGH THE USE OF ITS EQUIPMENT, OR ITS STATEMENTS OR OPINION CONCERNING THE RESULTS OF ANY TEST. TOOLS LOST OR DAMAGED IN THE HOLE SHALL BE PAID FOR AT COST BY THE PARTY FOR WHOM THE TEST IS MADE.

Approved By Ed Glassman

Our Representative Rod Steinbrink

Circ. Sub X N/C
Sampler
Extra Packer
Elect. Rec.
Other
TOTAL PRICE \$ 600

TRILOBITE TESTING L.L.C.

OPERATOR : AFG Energy, Inc
 WELL NAME: Schoenthaler #3
 LOCATION : 34-12S-21W, Trego Cty KS
 INTERVAL : 3798.00 To 3830.00 ft

DATE 06/25/96
 KB 2224.00 ft
 GR 2216.00 ft
 TD 3830.00 ft

TICKET NO: 9263
 FORMATION: Marmaton
 TEST TYPE: CONV

DST #4

RECORDER DATA

Mins	Field	1	2	3	4	TIME DATA-----
PF 30 Rec.	13339	13339	13276			PF Fr. 0028 to 0058 hr
SI 45 Range(Psi)	4375.0	4375.0	4000.0	0.0	0.0	IS Fr. 0058 to 0143 hr
SF 30 Clock(hrs)	12	12	12			SF Fr. 0143 to 0213 hr
FS 45 Depth(ft)	3820.0	3820.0	3825.0	0.0	0.0	FS Fr. 0213 to 0258 hr

	Field	1	2	3	4	
A. Init Hydro	2003.0	1983.0	0.0	0.0	0.0	T STARTED 2300 hr
B. First Flow	52.0	64.0	0.0	0.0	0.0	T ON BOTM 0025 hr
B1. Final Flow	62.0	64.0	0.0	0.0	0.0	T OPEN 0028 hr
C. In Shut-in	1140.0	1113.0	0.0	0.0	0.0	T PULLED 0258 hr
D. Init Flow	83.0	84.0	0.0	0.0	0.0	T OUT 0500 hr
E. Final Flow	93.0	84.0	0.0	0.0	0.0	
F. Fl Shut-in	1120.0	1084.0	0.0	0.0	0.0	TOOL DATA-----
G. Final Hydro	1942.0	1927.0	0.0	0.0	0.0	Tool Wt. 0.00 lbs
Inside/Outside	I	I	O			Wt Set On Packer 25000.00 lbs

RECOVERY

Tot Fluid 120.00 ft of 30.00 ft in DC and 90.00 ft in DP
 2.00 ft of Free oil - 100% oil
 118.00 ft of Oil cut mud - 25% oil, 75% mud

Initial Str Wt 40000.00 lbs
 Unseated Str Wt 0.00 lbs
 Bot Choke 0.75 in
 Hole Size 7.88 in
 D Col. ID 2.25 in
 D. Pipe ID 3.80 in
 D.C. Length 30.00 ft
 D.P. Length 3757.00 ft

SALINITY 0.00 P.P.M. A.P.I. Gravity 37.00

BLOW DESCRIPTION

Initial Flow -
 Weak surface blow, slowly built to 6"

Initial Shutin -
 No return

Final Flow -
 Weak surface return, slowly built to 6"

Final Shutin -
 No return

SAMPLES:
 SENT TO:

MUD DATA-----

Mud Type	Chemical
Weight	9.30 lb/c
Vis.	46.00 S/L
W.L.	9.60 in ³
F.C.	0.00 in
Mud Drop	
Amt. of fill	0.00 ft
Btm. H. Temp.	115.00 F
Hole Condition	
% Porosity	0.00
Packer Size	6.75 in
No. of Packers	2
Cushion Amt.	0.00
Cushion Type	
Reversed Out	
Tool Chased	
Tester	Rod Steinbrink
Co. Rep.	Ed Glassman
Contr.	Discovery
Rig #	1
Unit #	
Pump T.	

Test Successful: Y

CALCULATED RECOVERY ANALYSIS

DST 4

TICKET # 9263

SAMPLE #	TOTAL FEET	GAS		OIL		WATER		MUD	
		%	FEET	%	FEET	%	FEET	%	FEET
DRILL PIPE 1	2		0	100	2		0		0
2	88		0	25	22		0	75	66
3			0		0		0		0
4			0		0		0		0
5			0		0		0		0
6			0		0		0		0
WEIGHT PIP 1			0		0		0		0
2			0		0		0		0
3			0		0		0		0
4			0		0		0		0
DRL COLLAR 1	30		0	25	7.5		0	75	22.5
2			0		0		0		0
3			0		0		0		0
4			0		0		0		0
5			0		0		0		0
TOTAL	120		0		31.5		0		88.5

HRS OPEN BBL/DAY

BBL OIL= 0.377955 * 0.5 18.14184
 BBL WATER= 0 * 0
 BBL MUD= 1.048545
 BBL GAS = 0

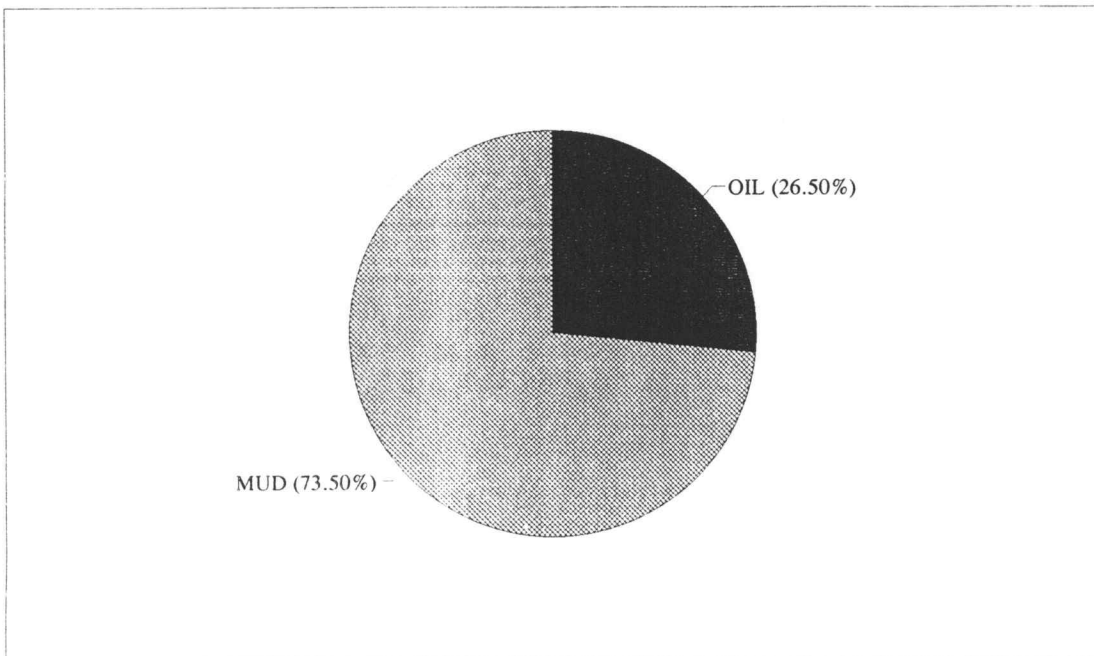
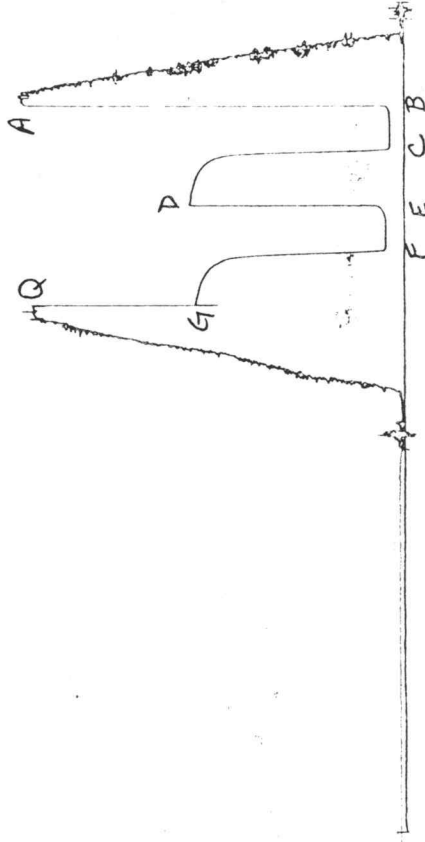


CHART PAGE

DST # 4
13339 X



This is a photocopy of the actual AK-1 recorder chart



TRILOBITE TESTING L.L.C.

P.O. Box 362 • Hays, Kansas 67601

Test Ticket

Nº 9263

Well Name & No.	<u>Schoenthaler #3</u>	Test No.	<u>4</u>	Date	<u>6-25-96</u>
Company	<u>AFG Energy, Inc.</u>	Zone Tested	<u>Marmaton</u>		
Address	<u>P.O. Box 458 Hays, KS. 67601</u>		Elevation	<u>2224</u>	KB <u>2216</u> GL
Co. Rep / Geo.	<u>Ed Glassman</u>	Cont.	<u>Discovery #1</u>	Est. Ft. of Pay	<u> </u> Por. <u> </u> %
Location: Sec.	<u>34</u>	Twp.	<u>12^S</u>	Rge.	<u>21^W</u> Co. <u>Trego</u> State <u>KS.</u>
No. of Copies	<u> </u>	Distribution Sheet (Y, N)	<u> </u>	Turnkey (Y, N)	<u> </u> Evaluation (Y, N) <u> </u>

Interval Tested	<u>3798-3830</u>	Initial Str Wt./Lbs.	<u>40,000</u>	Unseated Str Wt./Lbs.	<u> </u>
Anchor Length	<u>32'</u>	Wt. Set Lbs.	<u>25,000</u>	Wt. Pulled Loose/Lbs.	<u> </u>
Top Packer Depth	<u>3793</u>	Hole Size — 7 7/8"	<u> </u>	Rubber Size — 6 3/4"	<u> </u>
Bottom Packer Depth	<u>3798</u>	Wt. Pipe I.D. — 2.7 Ft. Run	<u> </u>	<u> </u>	<u> </u>
Total Depth	<u>3830</u>	Drill Collar — 2.25 Ft. Run	<u>4" H-90</u>	<u>30'</u>	<u> </u>
Mud Wt.	<u>9.3</u> LCM <u> </u> Vis. <u>46</u> WL <u>9.6</u>	Drill Pipe Size	<u>4 1/2" XH</u>	Ft. Run	<u>3757'</u>
Blow Description	<u>IF: Weak surface blow slowly built 6"</u>				
	<u>ISI: No return.</u>				
	<u>FF: Weak surface return slowly built to 6"</u>				
	<u>FSI: No return.</u>				

Recovery — Total Feet	<u>120'</u>	Ft. in DC	<u>30'</u>	Ft. in WP	<u> </u>	Ft. in DP	<u>90'</u>				
Rec.	<u> </u>	Feet Of	<u> </u>	%gas	<u> </u>	%oil	<u> </u>	%water	<u> </u>	%mud	<u> </u>
Rec.	<u>2'</u>	Feet Of	<u>FO</u>	%gas	<u>100</u>	%oil	<u> </u>	%water	<u> </u>	%mud	<u> </u>
Rec.	<u> </u>	Feet Of	<u> </u>	%gas	<u> </u>	%oil	<u> </u>	%water	<u> </u>	%mud	<u> </u>
Rec.	<u>118°</u>	Feet Of	<u>OCM</u>	%gas	<u>25</u>	%oil	<u> </u>	%water	<u>75</u>	%mud	<u> </u>
Rec.	<u> </u>	Feet Of	<u> </u>	%gas	<u> </u>	%oil	<u> </u>	%water	<u> </u>	%mud	<u> </u>

BHT 115° °F Gravity 38 °API D@ 70° °F Corrected Gravity 37 °API
RW @ °F Chlorides ppm Recovery Chlorides 5,000 ppm System

(A) Initial Hydrostatic Mud	<u>2003</u>	PSI	Recorder No.	<u>13339</u>	T-Started	<u>2300</u>
(B) First Initial Flow Pressure	<u>52</u>	PSI	@ (depth)	<u>3820</u>	T-Open	<u>0028</u>
(C) First Final Flow Pressure	<u>62</u>	PSI	Recorder No.	<u>13276</u>	T-Pulled	<u>0258</u>
(D) Initial Shut-in Pressure	<u>1140</u>	PSI	@ (depth)	<u>3825</u>	T-Out	<u>0500</u>
(E) Second Initial Flow Pressure	<u>83</u>	PSI	Recorder No.	<u> </u>	<u> </u>	<u> </u>
(F) Second Final Flow Pressure	<u>93</u>	PSI	@ (depth)	<u> </u>	<u> </u>	<u> </u>
(G) Final Shut-in Pressure	<u>1120</u>	PSI	Initial Opening	<u>30</u>	Test	<u>600</u>
(H) Final Hydrostatic Mud	<u>1942</u>	PSI	Initial Shut-in	<u>45</u>	Jars	<u> </u>

Final Flow	<u>30</u>	Safety Joint	<u> </u>
Final Shut-in	<u>45</u>	Straddle	<u> </u>
		Circ. Sub	<u>X</u> <u>N/C</u>
		Sampler	<u> </u>
		Extra Packer	<u> </u>
		Elect. Rec.	<u> </u>
		Other	<u> </u>
		TOTAL PRICE \$	<u>600</u>

TRILOBITE TESTING L.L.C. SHALL NOT BE LIABLE FOR DAMAGE OF ANY KIND OF THE PROPERTY OR PERSONNEL OF THE ONE FOR WHOM A TEST IS MADE, OR FOR ANY LOSS SUFFERED OR SUSTAINED, DIRECTLY OR INDIRECTLY, THROUGH THE USE OF ITS EQUIPMENT, OR ITS STATEMENTS OR OPINION CONCERNING THE RESULTS OF ANY TEST. TOOLS LOST OR DAMAGED IN THE HOLE SHALL BE PAID FOR AT COST BY THE PARTY FOR WHOM THE TEST IS MADE.

Approved By Ed Glassman
Our Representative Rod Steinbrink

TRILOBITE TESTING L.L.C.

OPERATOR : AFG Energy, Inc
 WELL NAME: Schoenthaler #3
 LOCATION : 34-12S-21W, Trego Cty KS
 INTERVAL : 3851.00 To 3873.00 ft

DATE 06/25/96
 KB 2224.00 ft TICKET NO: 9264 DST #5
 GR 2216.00 ft FORMATION: Arbuckle
 TD 3873.00 ft TEST TYPE: CONV

RECORDER DATA

Mins	Field	1	2	3	4	TIME DATA-----
PF 30 Rec.	13339	13339	13276			PF Fr. 1743 to 1813 hr
SI 15 Range(Psi)	4375.0	4375.0	4000.0	0.0	0.0	IS Fr. 1813 to 1828 hr
SF 40 Clock(hrs)	12	12	12			SF Fr. 1828 to 1908 hr
FS 0 Depth(ft)	3863.0	3863.0	3868.0	0.0	0.0	FS Fr. to hr

	Field	1	2	3	4	
A. Init Hydro	2013.0	2021.0	0.0	0.0	0.0	T STARTED 1600 hr
B. First Flow	31.0	43.0	0.0	0.0	0.0	T ON BOTM 1740 hr
Bl. Final Flow	31.0	43.0	0.0	0.0	0.0	T OPEN 1743 hr
C. In Shut-in	899.0	906.0	0.0	0.0	0.0	T PULLED 1908 hr
D. Init Flow	52.0	52.0	0.0	0.0	0.0	T OUT 2030 hr
E. Final Flow	52.0	52.0	0.0	0.0	0.0	
F. Fl Shut-in	0.0	0.0	0.0	0.0	0.0	
G. Final Hydro	1992.0	1997.0	0.0	0.0	0.0	
Inside/Outside	I	I	O			

TOOL DATA-----

Tool Wt.	0.00 lbs
Wt Set On Packer	25000.00 lbs
Wt Pulled Loose	50000.00 lbs
Initial Str Wt	40000.00 lbs
Unseated Str Wt	40000.00 lbs
Bot Choke	0.75 in
Hole Size	7.88 in
D Col. ID	2.25 in
D. Pipe ID	3.80 in
D.C. Length	30.00 ft
D.P. Length	3819.00 ft

RECOVERY

Tot Fluid 6.00 ft of 6.00 ft in DC and 0.00 ft in DP
 1.00 ft of Free oil - 100% oil
 5.00 ft of Oil cut mud - 20% oil, 80% mud

SALINITY 0.00 P.P.M. A.P.I. Gravity 0.00

BLOW DESCRIPTION

Initial Flow -
 Weak surface blow, died in 20 minutes

Final Flow -
 Surge at open, flushed tool, no blow

SAMPLES:
 SENT TO:

MUD DATA-----

Mud Type	Chemical
Weight	9.40 lb/c
Vis.	45.00 S/L
W.L.	10.40 in ³
F.C.	0.00 in
Mud Drop	
Amt. of fill	0.00 ft
Btm. H. Temp.	117.00 F
Hole Condition	
% Porosity	0.00
Packer Size	6.75 in
No. of Packers	2
Cushion Amt.	0.00
Cushion Type	
Reversed Out	
Tool Chased	
Tester	Rod Steinbrink
Co. Rep.	Ed Glassman
Contr.	Discovery
Rig #	1
Unit #	
Pump T.	

Test Successful: Y

CALCULATED RECOVERY ANALYSIS

DST 5

TICKET # 9264

SAMPLE #	TOTAL		GAS		OIL		WATER		MUD	
	FEET	%	FEET	%	FEET	%	FEET	%	FEET	
DRILL PIPE 1			0		0		0		0	
2			0		0		0		0	
3			0		0		0		0	
4			0		0		0		0	
5			0		0		0		0	
6			0		0		0		0	
WEIGHT PIP 1			0		0		0		0	
2			0		0		0		0	
3			0		0		0		0	
4			0		0		0		0	
DRL COLLAR 1	1		0	100	1		0		0	
2	5		0	20	1		0	80	4	
3			0		0		0		0	
4			0		0		0		0	
5			0		0		0		0	
TOTAL	6		0		2		0		4	

HRS OPEN BBL/DAY

BBL OIL= 0.00978 * 1.167 0.2011311
 BBL WATER= 0 * 0
 BBL MUD= 0.01956
 BBL GAS = 0

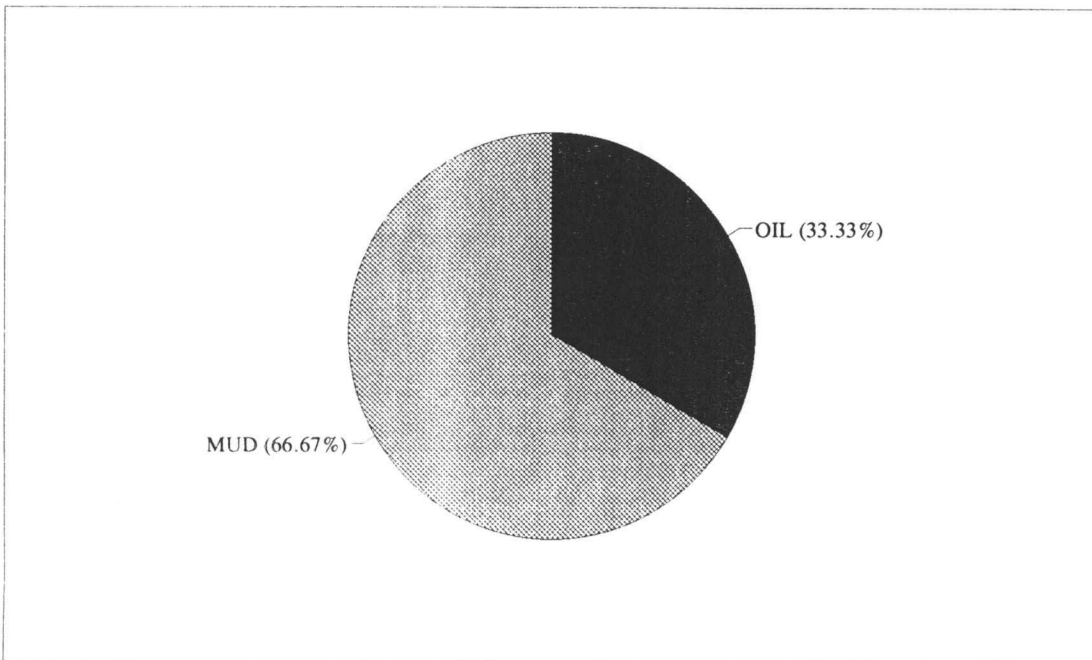
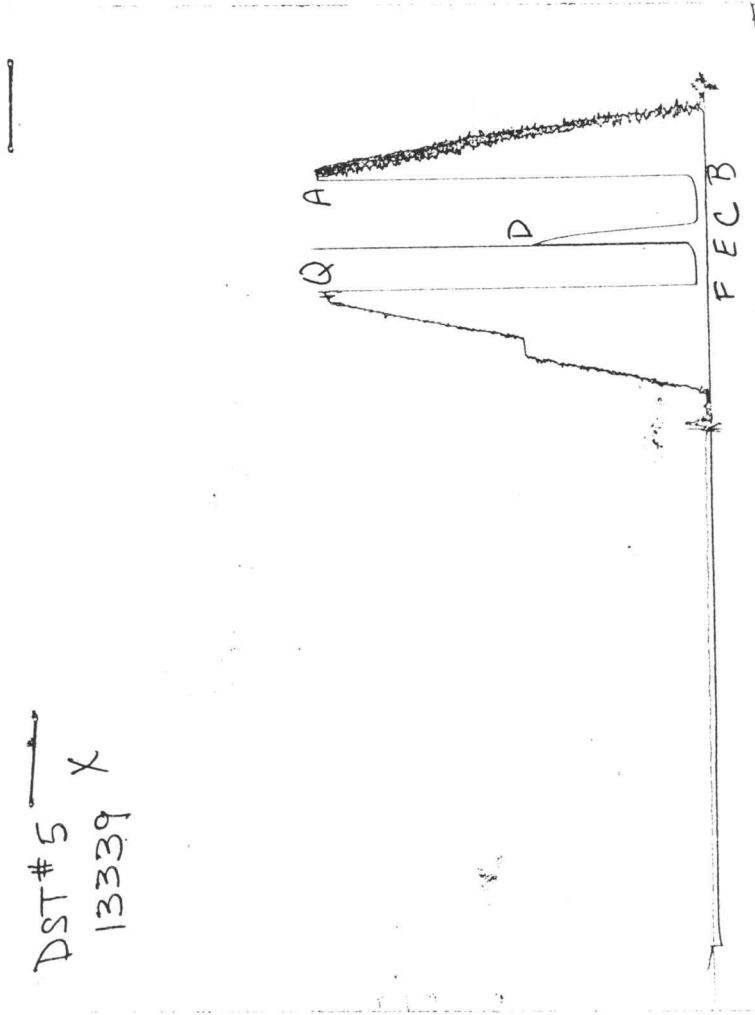
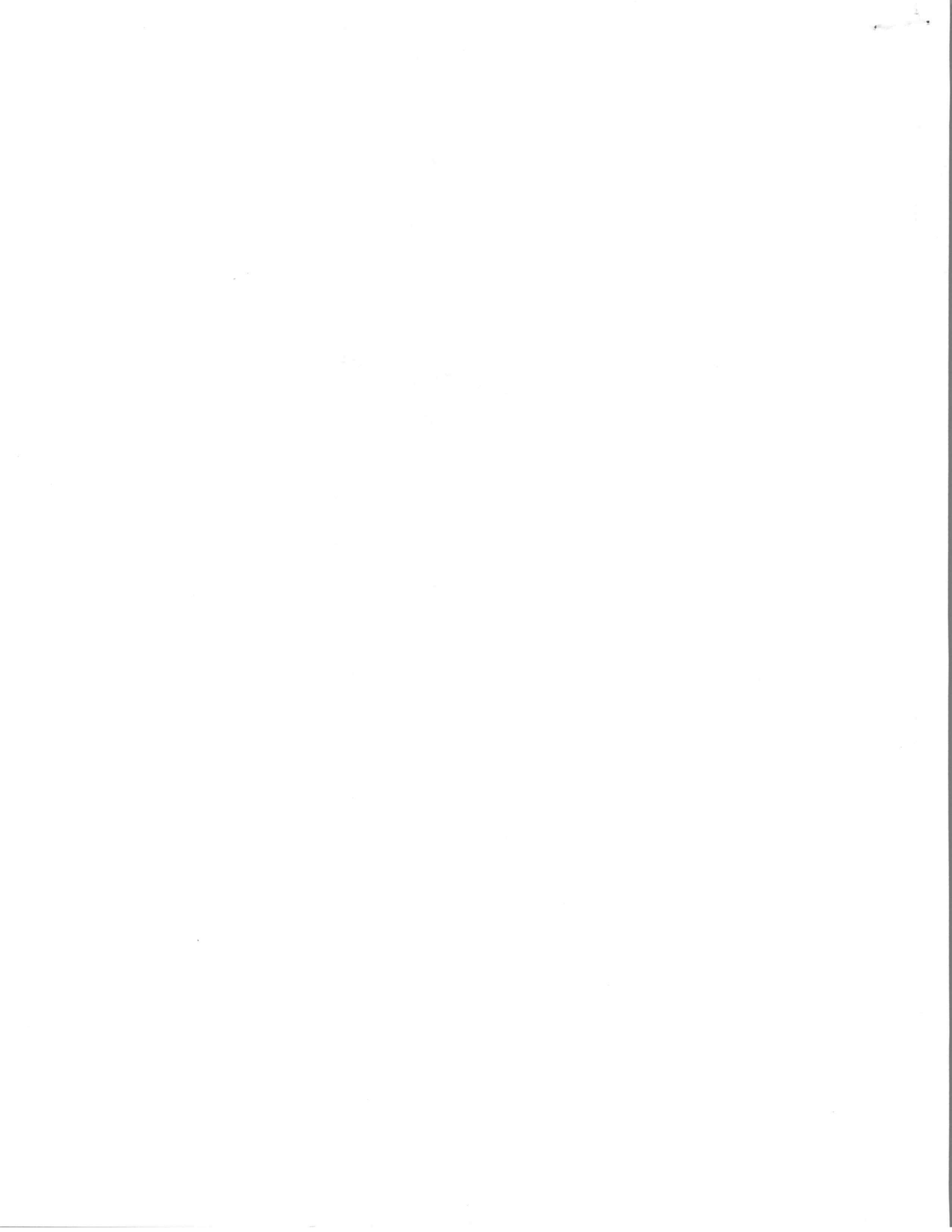


CHART PAGE

DST # 5
13339 X



This is a photocopy of the actual AK-1 recorder chart



TRILOBITE TESTING L.L.C.

P.O. Box 362 • Hays, Kansas 67601

Test Ticket

N^o 9264

Well Name & No.	Schoenthaler #3	Test No.	5	Date	6-25-96
Company	AFG Energy, Inc.	Zone Tested	Arbuckle		
Address	P.O. Box 458 Hays, KS. 67601	Elevation	2224	KB	2216 GL
Co. Rep / Geo.	Ed Glassman	Cont.	Discovery #1	Est. Ft. of Pay	___ Por. ___ %
Location: Sec.	34	Twp.	12 ^S	Rge.	21 ^W
		Co.	Trego	State	KS
No. of Copies	Distribution Sheet (Y, N)	Turnkey (Y, N)	Evaluation (Y, N)		

Interval Tested	3851 - 3873	Initial Str Wt./Lbs.	40,000	Unseated Str Wt./Lbs.	40,000
Anchor Length	22'	Wt. Set Lbs.	25,000	Wt. Pulled Loose/Lbs.	50,000
Top Packer Depth	3846	Hole Size — 7 7/8"		Rubber Size — 6 3/4"	
Bottom Packer Depth	3851	Wt. Pipe I.D. — 2.7 Ft. Run			
Total Depth	3873	Drill Collar — 2.25 Ft. Run	4" H-90	30'	
Mud Wt.	9.4 LCM — Vis. 45 WL 10.4	Drill Pipe Size	4 1/2" XH	Ft. Run	3819'
Blow Description	IF: Weak surface blow died in 20 mins.				

FF: Surge @ open - flushed tool - no blow

Recovery — Total Feet	Ft. in DC	Ft. in WP	Ft. in DP	%gas	%oil	%water	%mud
Rec. 6'	— 6'	—	—				
Rec. 1'	FO			100			
Rec. 5'	OCM	—		20		80	

BHT	117°	°F Gravity		°API D@		°F Corrected Gravity		°API
RW		@		°F Chlorides		ppm Recovery	Chlorides 6,000	ppm System
(A) Initial Hydrostatic Mud	2013	PSI	Recorder No.	13339	T-Started	1600		
(B) First Initial Flow Pressure	31	PSI	@ (depth)	3863	T-Open	1743		
(C) First Final Flow Pressure	31	PSI	Recorder No.	13276	T-Pulled	1908		
(D) Initial Shut-in Pressure	899	PSI	@ (depth)	3868	T-Out	2030		
(E) Second Initial Flow Pressure	52	PSI	Recorder No.	—				
(F) Second Final Flow Pressure	52	PSI	@ (depth)	—				
(G) Final Shut-in Pressure	—	PSI	Initial Opening	30	Test	600		
(H) Final Hydrostatic Mud	1992	PSI	Initial Shut-in	15	Jars			

TRILOBITE TESTING L.L.C. SHALL NOT BE LIABLE FOR DAMAGE OF ANY KIND OF THE PROPERTY OR PERSONNEL OF THE ONE FOR WHOM A TEST IS MADE, OR FOR ANY LOSS SUFFERED OR SUSTAINED, DIRECTLY OR INDIRECTLY, THROUGH THE USE OF ITS EQUIPMENT, OR ITS STATEMENTS OR OPINION CONCERNING THE RESULTS OF ANY TEST. TOOLS LOST OR DAMAGED IN THE HOLE SHALL BE PAID FOR AT COST BY THE PARTY FOR WHOM THE TEST IS MADE.

Final Flow	40	Safety Joint	
Final Shut-in		Straddle	
		Circ. Sub	X 35
		Sampler	
		Extra Packer	
		Elect. Rec.	
		Other	
		TOTAL PRICE \$	635

Approved By Ed Glassman
Our Representative Rod Steinbrink

TRILOBITE TESTING L.L.C.

OPERATOR : AFG Energy, Inc DATE 06/26/96
 WELL NAME: Schoenthaler #3 KB 2224.00 ft TICKET NO: 9265 DST #6
 LOCATION : 34-12S-21W, Trego Cty KS GR 2216.00 ft FORMATION: Arbuckle
 INTERVAL : 3851.00 To 3884.00 ft TD 3884.00 ft TEST TYPE: CONV

RECORDER DATA

Mins	Field	1	2	3	4	TIME DATA-----
PF 30 Rec.	13339	13339	13276			PF Fr. 2308 to 2338 hr
SI 45 Range(Psi)	4375.0	4375.0	4000.0	0.0	0.0	IS Fr. 2338 to 0023 hr
SF 30 Clock(hrs)	12	12	12			SF Fr. 0023 to 0053 hr
FS 45 Depth(ft)	3879.0	3879.0	3874.0	0.0	0.0	FS Fr. 0053 to 0138 hr

	Field	1	2	3	4	
A. Init Hydro	1992.0	2003.0	0.0	0.0	0.0	T STARTED 2200 hr
B. First Flow	72.0	81.0	0.0	0.0	0.0	T ON BOTM 2305 hr
B1. Final Flow	104.0	127.0	0.0	0.0	0.0	T OPEN 2308 hr
C. In Shut-in	1190.0	1205.0	0.0	0.0	0.0	T PULLED 0138 hr
D. Init Flow	187.0	198.0	0.0	0.0	0.0	T OUT 0400 hr
E. Final Flow	218.0	227.0	0.0	0.0	0.0	
F. Fl Shut-in	1190.0	1201.0	0.0	0.0	0.0	
G. Final Hydro	1962.0	1969.0	0.0	0.0	0.0	
Inside/Outside	0	0	I			

TOOL DATA-----
 Tool Wt. 0.00 lbs
 Wt Set On Packer 30000.00 lbs
 Wt Pulled Loose 45000.00 lbs
 Initial Str Wt 40000.00 lbs
 Unseated Str Wt 42000.00 lbs
 Bot Choke 0.75 in
 Hole Size 7.88 in
 D Col. ID 2.25 in
 D. Pipe ID 3.80 in
 D.C. Length 30.00 ft
 D.P. Length 3817.00 ft

RECOVERY

Tot Fluid 490.00 ft of 30.00 ft in DC and 460.00 ft in DP
 120.00 ft of Free oil - 100% oil
 120.00 ft of Gassy mud cut oil - 15% gas, 65% oil, 20% mud
 250.00 ft of Gassy oil cut mud - 30% gas, 20% oil, 50% mud

SALINITY 0.00 P.P.M. A.P.I. Gravity 35.60

BLOW DESCRIPTION

Initial Flow -
 Surface blow built to bottom in 11 minutes

Initial Shutin -
 Bled off blow, .5" return blow

Final Flow -
 Surface return built to bottom in 12 minutes

Final Shutin -
 Bled off blow, weak return on surface, died in 30 minutes

SAMPLES:
 SENT TO:

MUD DATA-----
 Mud Type Chemical
 Weight 9.40 lb/c
 Vis. 48.00 S/L
 W.L. 9.60 in3
 F.C. 0.00 in
 Mud Drop

Amt. of fill 0.00 ft
 Btm. H. Temp. 120.00 F
 Hole Condition
 % Porosity 0.00
 Packer Size 6.75 in
 No. of Packers 2
 Cushion Amt. 0.00
 Cushion Type
 Reversed Out
 Tool Chased
 Tester Rod Steinbrink
 Co. Rep. Ed Glassman
 Contr. Discovery
 Rig # 1
 Unit #
 Pump T.

Test Successful: Y

CALCULATED RECOVERY ANALYSIS

DST 6

TICKET # 9265

SAMPLE #	TOTAL		GAS		OIL		WATER		MUD	
	FEET	%	FEET	%	FEET	%	FEET	%	FEET	
DRILL PIPE 1	120		0	100	120		0		0	
2	120	15	18	65	78		0	20	24	
3	220	30	66	20	44		0	50	110	
4			0		0		0		0	
5			0		0		0		0	
6			0		0		0		0	
WEIGHT PIP 1			0		0		0		0	
2			0		0		0		0	
3			0		0		0		0	
4			0		0		0		0	
DRL COLLAR 1	30	30	9	20	6		0	50	15	
2			0		0		0		0	
3			0		0		0		0	
4			0		0		0		0	
5			0		0		0		0	
TOTAL	490		93		248		0		149	

HRS OPEN BBL/DAY

BBL OIL= 3.47058 * 1 83.29392
 BBL WATER= 0 * 0
 BBL MUD= 1.97883
 BBL GAS = 1.23849

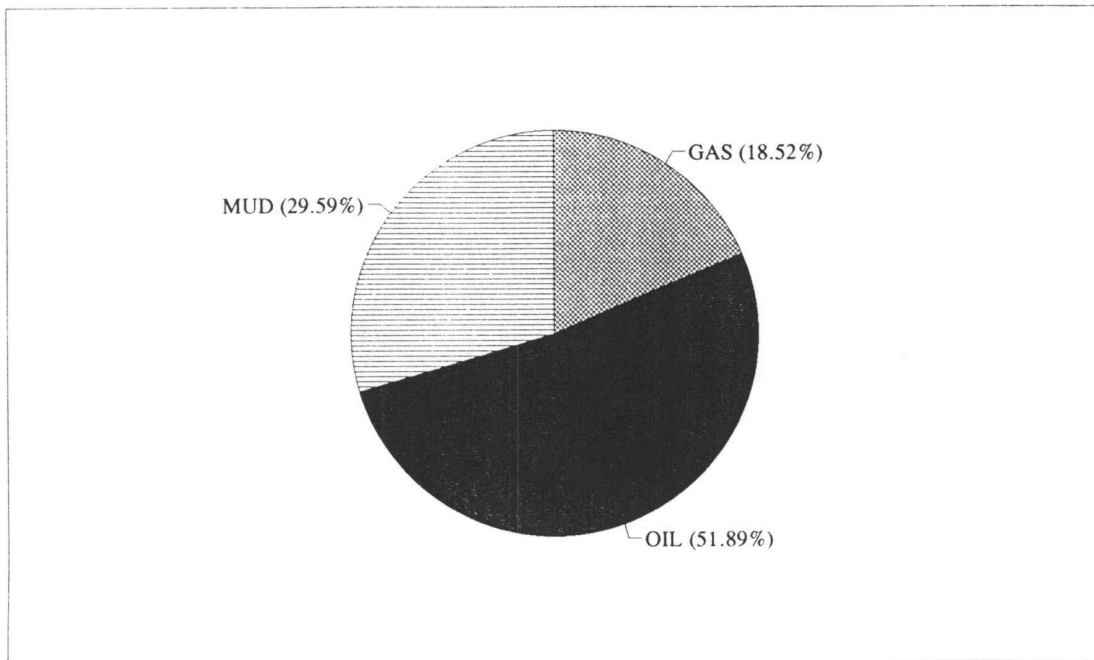
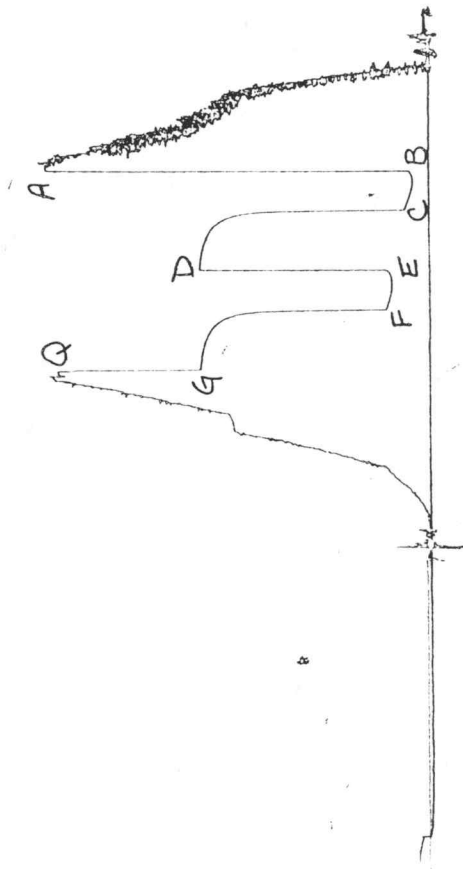


CHART PAGE

DST#6
13339



This is a photocopy of the actual AK-1 recorder chart

TRILOBITE TESTING L.L.C.

P.O. Box 362 • Hays, Kansas 67601

Test Ticket

Nº 9265

Well Name & No. Schoenthaler #3 Test No. 6 Date 6-26-96
Company AFG Energy, Inc. Zone Tested Arbuckle
Address P.O. Box 458 Hays, KS. 67601 Elevation 2224 KB 2216 GL
Co. Rep / Geo. Ed Glassman Cont. Discovery #1 Est. Ft. of Pay Por. %
Location: Sec. 34 Twp. 12^S Rge. 21^W Co. Trego State KS.
No. of Copies Distribution Sheet (Y, N) Turnkey (Y, N) Evaluation (Y, N)

Interval Tested 3851 - 3884 Initial Str Wt./Lbs. 40,000 Unseated Str Wt./Lbs. 42,000
Anchor Length 33' Wt. Set Lbs. 30,000 Wt. Pulled Loose/Lbs. 45,000
Top Packer Depth 3846 Hole Size — 7 7/8" Rubber Size — 6 3/4"
Bottom Packer Depth 3851 Wt. Pipe I.D. — 2.7 Ft. Run
Total Depth 3884 Drill Collar — 2.25 Ft. Run 4" H-90 30'
Mud Wt. 9.4 LCM Vis. 48 WL 9.6 Drill Pipe Size 4 1/2" XH Ft. Run 3817'
Blow Description IF: Surface blow built to bttm in 11 mins.
ISI: Bled off blow - 1/2" return blow
FF: Surface return built to bttm in 12 mins.
FSI: Bled off blow - weak return on surface died in 30 mins.

Recovery — Total Feet	Ft. in DC	Ft. in WP	Ft. in DP
Rec. <u>120'</u> Feet Of <u>Free Oil</u>	<u>30'</u>	<u> </u>	<u>460'</u>
Rec. <u>120'</u> Feet Of <u>GMCO</u>	<u> </u>	<u>10 %gas 90 %oil</u>	<u> </u> %water <u> </u> %mud
Rec. <u>250'</u> Feet Of <u>GOCM</u>	<u> </u>	<u>15 %gas 65 %oil</u>	<u> </u> %water <u>20</u> %mud
Rec. <u> </u> Feet Of <u> </u>	<u> </u>	<u>30 %gas 20 %oil</u>	<u> </u> %water <u>50</u> %mud
Rec. <u> </u> Feet Of <u> </u>	<u> </u>	<u> </u> %gas <u> </u> %oil	<u> </u> %water <u> </u> %mud
Rec. <u> </u> Feet Of <u> </u>	<u> </u>	<u> </u> %gas <u> </u> %oil	<u> </u> %water <u> </u> %mud

BHT 120° °F Gravity 37 °API D@ 74° °F Corrected Gravity 35.6 °API
RW @ °F Chlorides ppm Recovery Chlorides 8,000 ppm System
(A) Initial Hydrostatic Mud 1992 PSI Recorder No. 13276 T-Started 2200
(B) First Initial Flow Pressure 72 PSI @ (depth) 3874 T-Open 2308
(C) First Final Flow Pressure 104 PSI Recorder No. 13339 T-Pulled 0138
(D) Initial Shut-in Pressure 1190 PSI @ (depth) 3879 T-Out 0400
(E) Second Initial Flow Pressure 187 PSI Recorder No.
(F) Second Final Flow Pressure 218 PSI @ (depth)
(G) Final Shut-in Pressure 1190 PSI Initial Opening 30 Test 6000
(H) Final Hydrostatic Mud 1962 PSI Initial Shut-in 45 Jars

Final Flow 30 Safety Joint
Final Shut-in 45 Straddle
 Circ. Sub X N/C
 Sampler
 Extra Packer
 Elect. Rec.
 Other
TOTAL PRICE \$ 600

TRILOBITE TESTING L.L.C. SHALL NOT BE LIABLE FOR DAMAGE OF ANY KIND OF THE PROPERTY OR PERSONNEL OF THE ONE FOR WHOM A TEST IS MADE, OR FOR ANY LOSS SUFFERED OR SUSTAINED, DIRECTLY OR INDIRECTLY, THROUGH THE USE OF ITS EQUIPMENT, OR ITS STATEMENTS OR OPINION CONCERNING THE RESULTS OF ANY TEST. TOOLS LOST OR DAMAGED IN THE HOLE SHALL BE PAID FOR AT COST BY THE PARTY FOR WHOM THE TEST IS MADE.

Approved By Ed Glassman
Our Representative Rod Steinbrink

