

**TRILOBITE
TESTING, INC.**

DRILL STEM TEST REPORT

Prepared For: **Castle Resources Inc**

PO Box 87
Schoenchen, KS 67667

ATTN: Castle Resources Inc

19-12-35 Logan Co KS

Trumpeter #1

Start Date: 2004.08.03 @ 18:05:24

End Date: 2004.08.04 @ 02:27:33

Job Ticket #: 19604 DST #: 1

Trilobite Testing, Inc

PO Box 362 Hays, KS 67601

ph: 785-625-4778 fax: 785-625-5620

Castle Resources Inc

Trumpeter #1

19-12-35 Logan Co KS

DST # 1

Ft Scott

2004.08.03



**TRILOBITE
TESTING, INC**

DRILL STEM TEST REPORT

Castle Resources Inc
PO Box 87
Schoenchen, KS 67667

Trumpeter #1

19-12-35 Logan Co KS

Job Ticket: 19604

DST#: 1

ATTN: Castle Resources Inc

Test Start: 2004.08.03 @ 18:05:24

GENERAL INFORMATION:

Formation: **Ft Scott**

Deviated: No Whipstock: ft (KB)

Time Tool Opened: 20:25:04

Time Test Ended: 02:27:33

Test Type: Conventional Bottom Hole

Tester: Shane McBride

Unit No: 25

Interval: **4545.00 ft (KB) To 4585.00 ft (KB) (TVD)**

Total Depth: 4585.00 ft (KB) (TVD)

Hole Diameter: 7.88 inches Hole Condition: Fair

Reference Elevations: 3217.00 ft (KB)

3212.00 ft (CF)

KB to GR/CF: 5.00 ft

Serial #: 6720

Inside

Press@RunDepth: 87.37 psig @ 4546.00 ft (KB)

Start Date: 2004.08.03

End Date: 2004.08.04

Start Time: 18:05:24

End Time: 02:27:33

Capacity: 7000.00 psig

Last Calib.: 1899.12.30

Time On Btm: 2004.08.03 @ 20:24:19

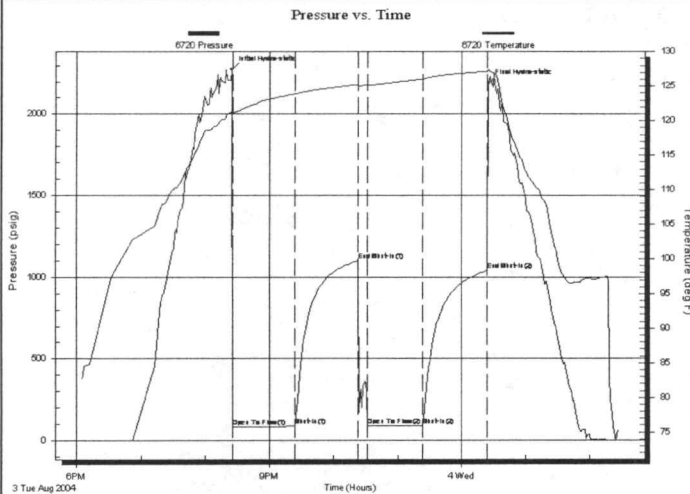
Time Off Btm: 2004.08.04 @ 00:24:34

TEST COMMENT: 3 1/2" in blow @ open built to 4" in died back to 1/4" in.

No return

No blow flush tool Good surge, No blow

No return



PRESSURE SUMMARY

Time (Min.)	Pressure (psig)	Temp (deg F)	Annotation
0	2274.90	121.46	Initial Hydro-static
1	80.95	121.15	Open To Flow (1)
60	85.63	123.87	Shut-In(1)
119	1099.05	125.25	End Shut-In(1)
128	87.78	125.06	Open To Flow (2)
179	87.37	126.04	Shut-In(2)
240	1038.62	127.18	End Shut-In(2)
241	2191.74	127.35	Final Hydro-static

Recovery

Length (ft)	Description	Volume (bbl)
130.00	mud 100%m	0.73

Gas Rates

	Choke (inches)	Pressure (psig)	Gas Rate (Mcf/d)



TRILOBITE
TESTING, INC

DRILL STEM TEST REPORT

TOOL DIAGRAM

Castle Resources Inc
PO Box 87
Schoenchen, KS 67667

Trumpeter #1

19-12-35 Logan Co KS

Job Ticket: 19604

DST#: 1

ATTN: Castle Resources Inc

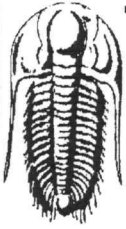
Test Start: 2004.08.03 @ 18:05:24

Tool Information

Drill Pipe:	Length: 4430.00 ft	Diameter: 3.80 inches	Volume: 62.14 bbl	Tool Weight: 1500.00 lb
Heavy Wt. Pipe:	Length: 0.00 ft	Diameter: 0.00 inches	Volume: 0.00 bbl	Weight set on Packer: 30000.00 lb
Drill Collar:	Length: 120.00 ft	Diameter: 2.25 inches	Volume: 0.59 bbl	Weight to Pull Loose: 70000.00 lb
			<u>Total Volume: 62.73 bbl</u>	Tool Chased 0.00 ft
Drill Pipe Above KB:	25.00 ft			String Weight: Initial 50000.00 lb
Depth to Top Packer:	4545.00 ft			Final 51000.00 lb
Depth to Bottom Packer:	ft			
Interval between Packers:	40.00 ft			
Tool Length:	60.00 ft			
Number of Packers:	2	Diameter: 6.75 inches		

Tool Comments:

Tool Description	Length (ft)	Serial No.	Position	Depth (ft)	Accum. Lengths
Change Over Sub	1.00			4526.00	
Shut In Tool	5.00			4531.00	
Hydraulic tool	5.00			4536.00	
Packer	5.00			4541.00	20.00 Bottom Of Top Packer
Packer	4.00			4545.00	
Stubb	1.00			4546.00	
Recorder	0.00	6720	Inside	4546.00	
Perforations	34.00			4580.00	
Recorder	0.00	11057	Outside	4580.00	
Bullnose	5.00			4585.00	40.00 Bottom Packers & Anchor
Total Tool Length:	60.00				



**TRILOBITE
TESTING, INC**

DRILL STEM TEST REPORT

FLUID SUMMARY

Castle Resources Inc
PO Box 87
Schoenchen, KS 67667

Trumpeter #1
19-12-35 Logan Co KS
Job Ticket: 19604 **DST#: 1**
Test Start: 2004.08.03 @ 18:05:24

ATTN: Castle Resources Inc

Mud and Cushion Information

Mud Type: Gel Chem	Cushion Type:	Oil API:	0 deg API
Mud Weight: 9.00 lb/gal	Cushion Length: ft	Water Salinity:	5300 ppm
Viscosity: 53.00 sec/qt	Cushion Volume: bbl		
Water Loss: 8.39 in ³	Gas Cushion Type:		
Resistivity: 0.00 ohm.m	Gas Cushion Pressure: psig		
Salinity: 5300.00 ppm			
Filter Cake: 2.00 inches			

Recovery Information

Recovery Table

Length ft	Description	Volume bbl
130.00	mud 100%m	0.730

Total Length: 130.00 ft Total Volume: 0.730 bbl

Num Fluid Samples: 0 Num Gas Bombs: 0 Serial #:

Laboratory Name: Laboratory Location:

Recovery Comments:

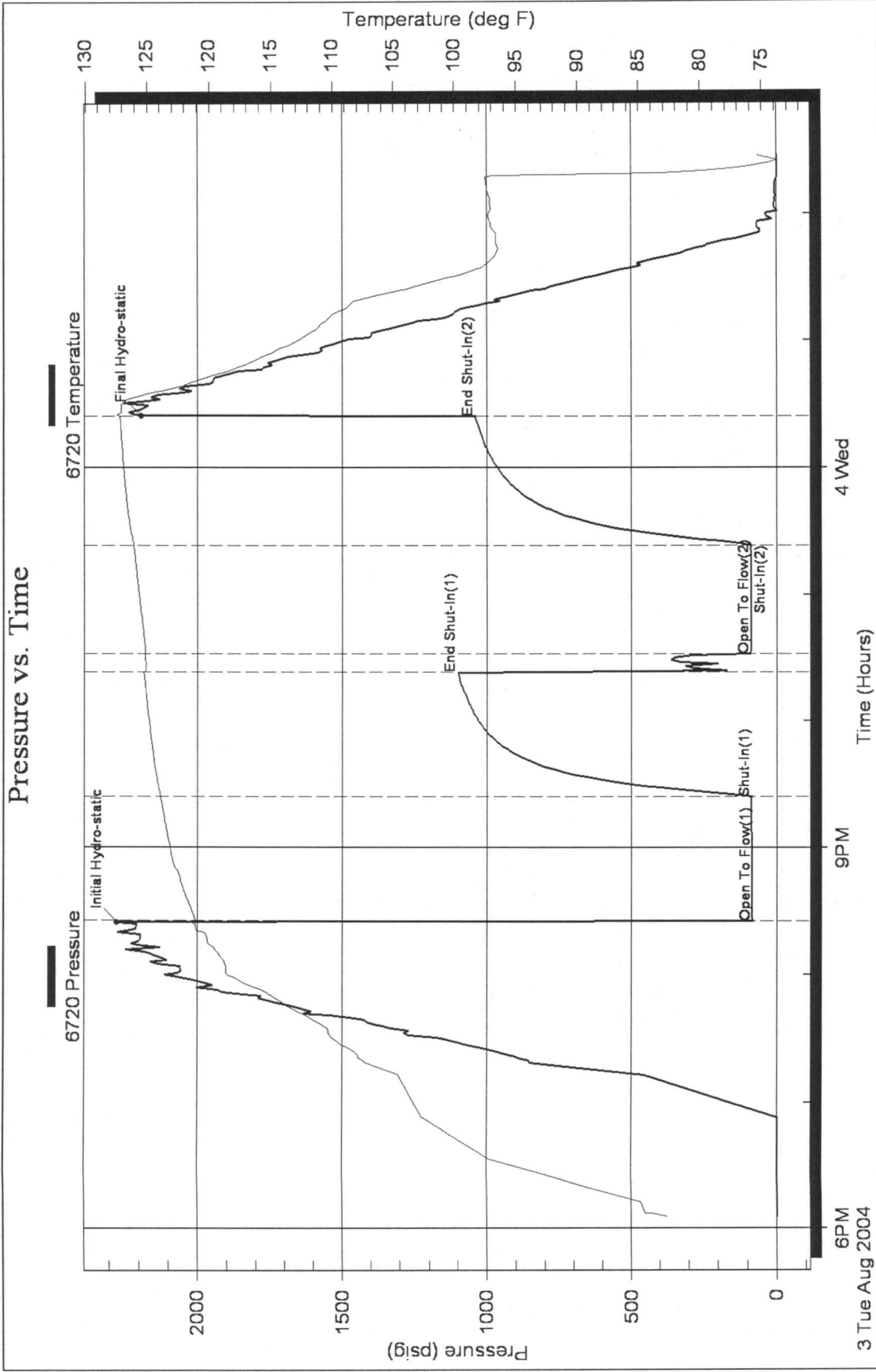
Serial #: 6720

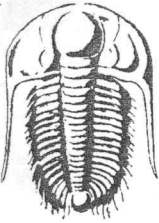
Inside

Castle Resources Inc

19-12-35 Logan Co KS

DST Test Number: 1





TRILOBITE TESTING INC.

P.O. Box 362 • Hays, Kansas 67601

INV 6656

No 19604

05/03

Test Ticket

Well Name & No. Trumpeter #1 Test No. #1 Date 8-3-04
 Company Castle Resources Inc. Zone Tested Ft Scott
 Address P.O. Box 87 Schoenchen, Ks 67667 Elevation 3217' KB 3212' GL
 Co. Rep / Geo. Jerry Green Cont. Markin #24 Est. Ft. of Pay _____ Por. _____ %
 Location: Sec. 19 Twp. 12 Rge. 35 Co. Logan State Ks
 No. of Copies Num. Distribution Sheet (Y, N) _____ Turnkey (Y, N) _____ Evaluation (Y, N) _____

Interval Tested 4545' 4585' Initial Str Wt./Lbs. 50,000 Unseated Str Wt/Lbs. 31,000
 Anchor Length _____ 40' Wt. Set Lbs. 30,000 Wt. Pulled Loose/Lbs. 70,000
 Top Packer Depth _____ 4540' Tool Weight 1,500
 Bottom Packer Depth _____ 4545' Hole Size 7 7/8" ✓ Rubber Size 6 3/4" ✓
 Total Depth _____ 4585' Wt. Pipe Run _____ Drill Collar Run 120'
 Mud Wt. 9.2 LCM #2 Vis. 53 WL 8.4 Drill Pipe Size 4 1/2 x H Ft. Run 4430'
 Blow Description 3 1/2" in blow @ open built to 4" in died back to 1/4" in.
No return
No blow Flush tool Good Surge No blow
No return

Recovery - Total Feet 130' GIP _____ Ft. in DC 120' Ft. in DP 10'
 Rec. 130' Feet of _____ %gas _____ %oil _____ %water _____ %mud
 Rec. _____ Feet of _____ %gas _____ %oil _____ %water _____ %mud
 Rec. _____ Feet of _____ %gas _____ %oil _____ %water _____ %mud
 Rec. _____ Feet of _____ %gas _____ %oil _____ %water _____ %mud
 Rec. _____ Feet of _____ %gas _____ %oil _____ %water _____ %mud
 BHT 127 °F Gravity _____ °API D @ _____ °F Corrected Gravity _____ °API
 RW _____ @ _____ °F Chlorides 5300 ppm Recovery 5300 Chlorides 5300 ppm System

	AK-1	Alpine	Recorder No.	Test X
(A) Initial Hydrostatic Mud		<u>2274</u> PSI	<u>6720</u>	<u>\$1,000.00</u>
(B) First Initial Flow Pressure		<u>80</u> PSI	(depth) <u>4546'</u>	Elec. Rec <u>X</u>
(C) First Final Flow Pressure		<u>85</u> PSI	Recorder No. <u>11057</u>	Jars _____
(D) Initial Shut-In Pressure		<u>1099</u> PSI	(depth) <u>4580'</u>	Safety Jt. _____
(E) Second Initial Flow Pressure		<u>87</u> PSI	Recorder No. _____	Circ Sub <u>X N/C</u>
(F) Second Final Flow Pressure		<u>87</u> PSI	(depth) _____	Sampler _____
(G) Final Shut-In Pressure		<u>1038</u> PSI	Initial Opening <u>60</u>	Straddle _____
(Q) Final Hydrostatic Mud		<u>2191</u> PSI	Initial Shut-In <u>60</u>	Ext. Packer _____

TRILOBITE TESTING INC. SHALL NOT BE LIABLE FOR DAMAGED OF ANY KIND OF THE PROPERTY OR PERSONNEL OF THE ONE FOR WHOM A TEST IS MADE, OR FOR ANY LOSS SUFFERED OR SUSTAINED, DIRECTLY OR INDIRECTLY, THROUGH THE USE OF ITS EQUIPMENT, OR ITS STATEMENTS OR OPINION CONCERNING THE RESULTS OF ANY TEST. TOOLS LOST OR DAMAGED IN THE HOLE SHALL BE PAID FOR AT COST BY THE PARTY FOR WHOM THE TEST IS MADE.

Approved By _____
 Our Representative [Signature]

T-On Location 16:30 p.m.
 T-Started 18:05 p.m.
 T-Open 20:25 p.m.
 T-Pulled 00:25 a.m.
 T-Out 02:30 a.m.

Mileage 160 way \$102.00
 Sub Total: \$1102.00
 Std. By 1 1/2 hrs 45.00
 Other _____
 Total: \$1,147.00

CHART PAGE
This is a photocopy of the actual AK-1 recorder chart

