

JAMES C. MUSGROVE

Petroleum Geologist
P.O. Box 1162
Great Bend, KS 67530

ORIGINAL

Office (316) 792-7716

Res. Claflin (316) 587-3444

Rains & Williamson Oil Co. Inc.
J&M Partners #1
SE-NW-SW; Section 8-13s-13w
Russell County, Kansas
Page No. 1

Dry and Abandoned

Contractor: VonFeldt Drilling Company (rig #1)

Commenced: December 12, 2001

Completed: January 1, 2002

Elevation: 1832' K.B.; 1830' D.F.; 1827' G. L.

Casing Program: Surface; 8 5/8" @ 468'
Production; None

Samples: Samples saved and examined 2200' to the Rotary Total Depth.

Drilling Time: One (1) foot drilling time recorded and kept 2200' to the Rotary Total Depth.

Measurements: All depths measured from the Kelly Bushing.

Drill Stem Testing: There were three (3) Drill Stem Tests ran by Trilobite Testing Inc.

Electric Log: By Log Tech; radiation Guard Log.

RECEIVED
KANSAS CORPORATION COMMISSION
FEB 27 2002
CONSERVATION DIVISION

<u>Formation</u>	<u>Log Depth</u>	<u>Sub-Sea Datum</u>
Anhydrite	813	+1019
Grand Haven	2378	-546
1 st Tarkio Sand	2384	-552
Dover	2410	-578
2 nd Tarkio Sand	2414	-582
Tarkio Lime	2453	-621
3 rd Tarkio Sand	2488	-656
Elmont	2520	-688
Howard	2663	-831
Severy	2712	-880
Topeka	2726	-894
Heebner	2957	-1125
Toronto	2975	-1143
Lansing	3012	-1180
Base Kansas City	3286	-1454
Conglomerate	3348	-1516
Arbuckle	3388	-1556
Rotary Total Depth	3405	-1573
Log Total Depth	3404	-1572

(All tops and zones are corrected to Electric Log measurements.)

SAMPLE ANALYSIS, SHOWS OF OIL, TESTING DATA, ETC.

TARKIO SECTION

1ST TARKIO SAND

2384-2400' Sand; gray to grayish green, very fine grained, sub rounded to sub angular, fair sorting, calcareous in part, micaceous, questionable gas bubbles, no stain, no free oil and no odor in fresh samples.

2ND TARKIO SAND

2414-2442' Sand; gray, very fine grained, micaceous, shaley, trace iron pyrite, no shows.

3RD TARKIO SAND

2488-2506' Sand; gray, very fine grained, micaceous, sub rounded to sub angular, fair to good sorting, friable, good intergranular porosity, no shows.

TOPEKA SECTION

2726-2732' Limestone; gray, fossiliferous, chalky, no shows.

2761-2770' Limestone; tan to gray, granular, chalky, no shows.

2770-2786' Limestone; as above, trace gray to smokey gray chert.

2826-2832' Limestone; gray to white, granular, chalky, plus white chalk, no shows.

2884-2891' Limestone; gray to white, finely crystalline, few fossiliferous, highly chalky, trace spotty brown stain, no show of free oil or odor in fresh samples.

2891-2902' Limestone; gray to tan, granular, slightly chalky, fair pinpoint porosity, fair stain and saturation, show of free oil and fair odor in fresh samples.

2906-2921' Limestone; tan to gray, fossiliferous, sparry calcite replacement in some porosity, trace brown stain, trace of free oil and faint odor in fresh samples.

Drill Stem Test #1 2871-2928'

Times: 45-45-30-30

Blow: IFP Weak steady
FFP Weak, died in 5 minutes

Recovery: 25' mud

Pressures:

ISIP	1039	psi
FSIP	922	psi
IFP	57-59	psi
FFP	57-59	psi
HSH	1623-1565	psi

2930-2950 Limestone; gray to white, chalky in part, poor visible porosity, trace gray and white chert.

TORONTO SECTION

2975-2984' Limestone; gray and cream, chalky increasingly cherty with depth, poor visible porosity, no shows.

LANSING SECTION

3012-3020' Limestone; white, fine to medium crystalline, chalky in part, scattered intercrystalline to pinpoint porosity, trace golden brown to brown stain, trace of free oil and faint odor in fresh samples.

3038-3044' Limestone; gray to cream, fossiliferous, sub oocastic, fair fossil cast to sub oocastic porosity, trace dark brown to brown spotty stain, trace of free oil and questionable odor in fresh samples.

Drill Stem Test #2 3015-3045'

Times: 45-30-45-45

Blow: Weak (1/2")

Recovery: 45' slightly oil cut mud (5% oil, 95% mud)

Pressures:

ISIP 94 psi
FSIP 165 psi
IFP 35-35 psi
FFP 35-35 psi
HSH 1530-1507 psi

3057-3064' Limestone; cream, oocastic, chalky, trace poor spotty stain, no show of free oil or odor in fresh samples.

3066-3076' Limestone; gray to white, chalky, poor visible porosity, no shows.

3084-3087' Limestone; gray, fossiliferous, cherty, poorly developed porosity, trace dull gray stain, no show of free oil or odor in fresh samples.

3090-3095' Limestone; gray, medium crystalline, chalky in part, poor spotty stain, no show of free oil or odor in fresh samples.

Drill Stem Test #3 3045-3100

Times: 30-30-30-30

Blow: Weak, died in 10 minutes

Recovery: 5' mud, with oil spots

Pressures:

ISIP 165 psi
FSIP 189 psi
IFP 35-35 psi
FFP 35-35 psi
HSH 1460-14313 psi

3104-3107' Limestone; gray and cream, fossiliferous, chalky, spotty stain,

trace of free oil and no odor in fresh samples.

- 3110-3124' Limestone; gray and tan, oocastic, good oocastic porosity, no shows.
- 3142-3152' Limestone; gray to white, oolitic, sub oocastic, poor visible porosity, no shows.
- 3166-3176' Limestone; gray to dark gray, fossiliferous in part, poor visible porosity, no shows.
- 3184-3194' Limestone; gray and white, fossiliferous, cherty in part, poor porosity, trace dark gray to black chert.
- 3210-3214' Limestone; gray and white, slightly fossiliferous, chalky, plus trace cream oocastic limestone, fair porosity, no shows.
- 3240-3252' Limestone; gray, highly fossiliferous, chalky, poor visible porosity, no shows.
- 3270-3280' Limestone; gray to white to dark gray, fossiliferous, cherty, poor visible porosity, no shows.

CONGLOMERATE SECTION

- 3348-3360' Loose unconsolidated quartz grains, plus white boney chert, and varied colored boney and opaque chert, trace white chalky limestone and varied colored shale.
- 3360-3389' Abundant, loose, unconsolidated large sub angular quartz grains, plus white and red oolitic opaque chert and varied colored sandy shale.

ARBUCKLE SECTION

- 3388-3400' Dolomite; tan and gray, finely crystalline, cherty in part, poor porosity, no shows.
- 3400-3405' Dolomite; as above, plus tan, sucrosic, dolomite, no shows.

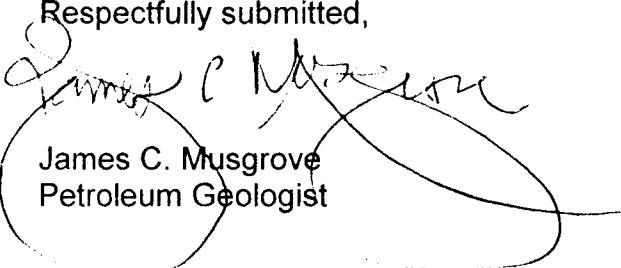
Rotary Total Depth 3405 (-1573)

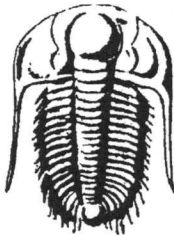
Log Total Depth 3404 (-1572)

Recommendations:

As the result of the low structural position and the negative drill stem tests, and there being no other zones worthy of any further testing it was recommended by all parties involved that the J&M Partner s be plugged and abandoned at the Rotary Total Depth 3405 (-1573).

Respectfully submitted,


James C. Musgrove
Petroleum Geologist



**TRILOBITE
TESTING, INC.**

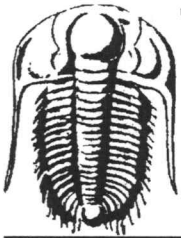
DRILL STEM TEST REPORT

Prepared for

Rains & Williamson Oil Co., Inc.
220 W. Douglas Ste 200
Wichita, KS 67202

J&M Partners#1
8 13s 13w
Russell co KS

Trilobite Testing, Inc
PO Box 362 - Hays, Kansas - 67601
ph: 785-625-4778 fax: 785-625-5620
e-mail: trilobite@eaglecom.net



TRILOBITE TESTING, INC.

DRILL STEM TEST REPORT

Well name#:	J&M Partners	Date:	12/29/2001
Location#:	8 13s 13w	Ticket #:	15613
		DST#	1

General Informaion:

Formation:	Lower Topek	Test Type:	Conventional	BHT:	102
Interval:	2871-2928	Tester:	Dan Bangle	OIL API:	
Total Depth:	2928	Elevation:	1832	ft(KB)	H2O Salinity:
Hole Diameter:	7 7/8"		1827	ft(CF)	
Start Data:	12/29/2001	Tool Weight:	1300	Mud Type:	Chemical
Start Time:	12:50:00	Weight Set on Packers:	30000	Mud Weight:	9.3
Time tool opened:	14:17:00	Weight to Pull Loose:	33000	Viscosity:	49
Time Off Btm:	16:47:00	Initial String Weight:	30000	Water Loss:	10
End Date:	12/29/01	Final String Weight:	30000	Resistivity:	
End Time:	18:30:00	Drill Pipe Length:	2863	Salinity:	6800
		Drill Collar Length:			

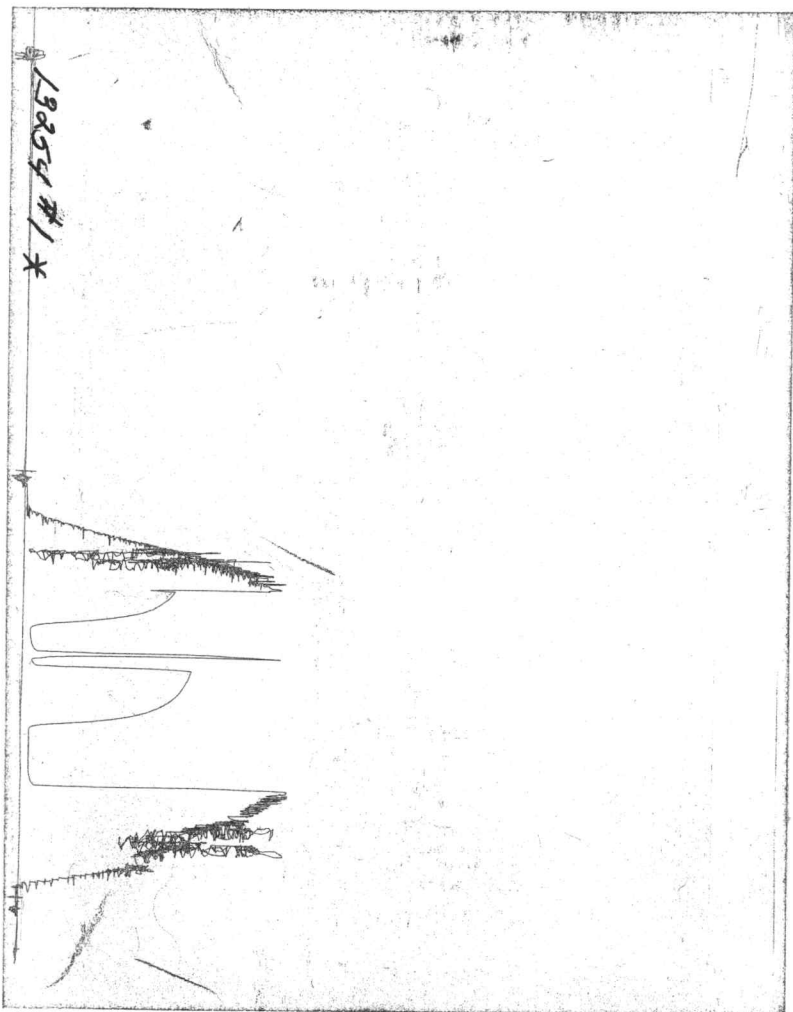
Test Comment:		
IF - Weak steady 1/2" blow		
FF - No blow - flushed tool - weak blow for 5 min.		
Recovery Length(ft):	25ft	25ft in DP
	Description:	
25	Drig Mud	

Gas Volume Report

Recorder #:	13254	Open	Min:	Ins. Of water	Orifice	MCF/D
Pressure Summary:	Time:(min)			PSIG	size	
Initial Hydro-static:	1618					
Open to Flow (1):	80	45				
Shut-in (1):	80					
End Shut-in (1):	1045	45				
Open to Flow (2):	80	30				
Shut-in (2):	80					
End Shut-in (2):	949	30				
Final Hydro-static:	1513					

CHART PAGE

This is a photocopy of the actual AK-1 recorder chart





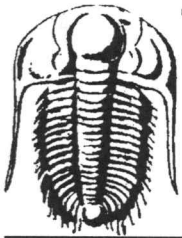
DRILL STEM TEST REPORT

Prepared for

Rains & Williamson Oil Co., Inc.
220 W. Douglas Ste 200
Wichita, KS 67202

J&M Partners#1
8 13s 13w
Russell co KS

Trilobite Testing, Inc
PO Box 362 - Hays, Kansas - 67601
ph: 785-625-4778 fax: 785-625-5620
e-mail: trilobite@eaglecom.net



TRILOBITE TESTING, INC.

DRILL STEM TEST REPORT

Well name#:	J&M Partners	Date:	12/30/2001
Location#:	8 13s 13w	Ticket #:	15614
		DST#	2

General Informaion:

Formation:	A-B LKC	Test Type:	Conventional	BHT:	103
Interval:	3015-3045	Tester:	Dan Bangle	OIL API:	
Total Depth:	3045	Elevation:	1832 ft(KB)	H2O Salinity:	
Hole Diameter:	7 7/8"		1827 ft(CF)		
Start Date:	12/30/2001	Tool Weight:	1300	Mud Type:	Chemical
Start Time:	6:00:00	Weight Set on Packers:	30000	Mud Weight:	9.3
Time tool opened:	7:37:00	Weight to Pull Loose:	33000	Viscosity:	49
Time Off Btm:	10:22:00	Initial String Weight:	30000	Water Loss:	10
End Date:	12/30/01	Final String Weight:	30000	Resistivity;	
End Time:	12:30:00	Drill Pipe Length:	3019	Salinity:	6800
		Drill Collar Length:			

Test Comment:

IF - Weak steady 1/2" blow
FF - Weak 1/2" steady blow

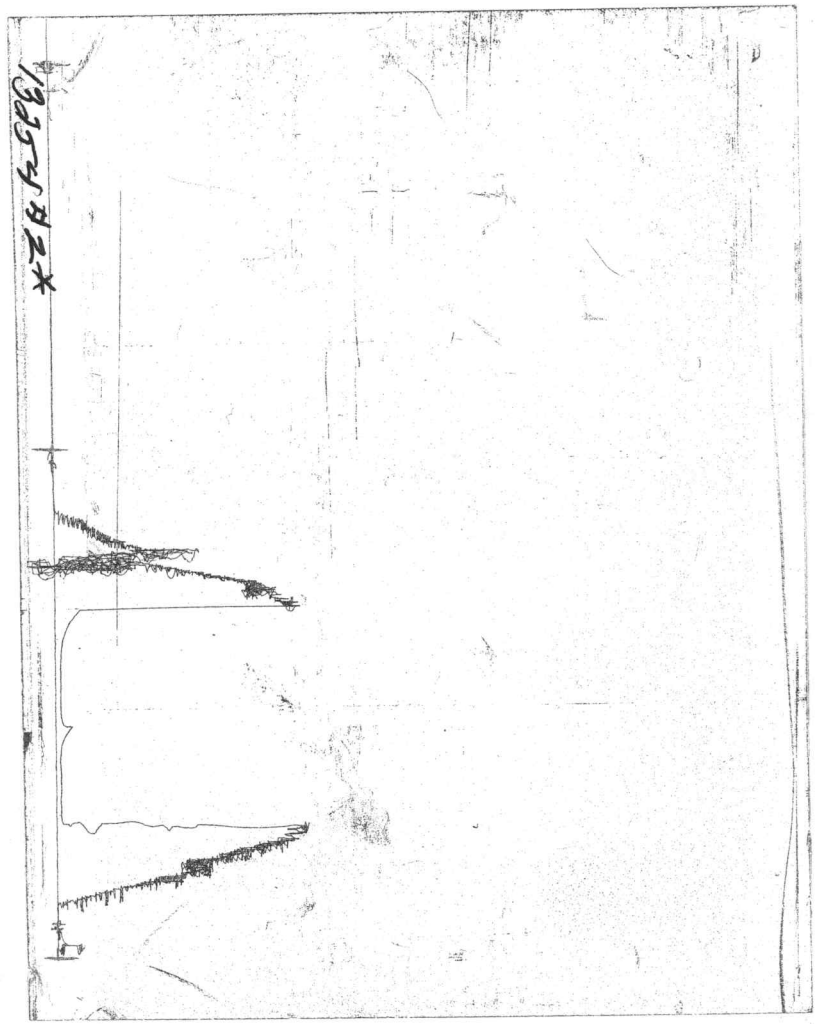
Recovery Length(ft):	45	Description:	45ft in DP
	45	OCM 5%oil 95%mud good show free oil in top tool	

Gas Volume Report

Recorder #:	13254	Open	Min:	Ins. Of water	Orifice	MCF/D
Pressure Summary:	Time:(min)			PSIG	size	
Initial Hydro-static:	1456					
Open to Flow (1):	34	45				
Shut-in (1):	34					
End Shut-in (1):	94	30				
Open to Flow (2):	37	45				
Shut-in (2):	37					
End Shut-in (2):	164	45				
Final Hydro-static:	1369					

CHART PAGE

This is a photocopy of the actual AK-1 recorder chart





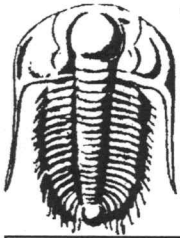
DRILL STEM TEST REPORT

Prepared for

Rains & Williamson Oil Co., Inc.
220 W. Douglas Ste 200
Wichita, KS 67202

J&M Partners#1
8 13s 13w
Russell co KS

Trilobite Testing, Inc
PO Box 362 - Hays, Kansas - 67601
ph: 785-625-4778 fax: 785-625-5620
e-mail: trilobite@eaglecom.net



TRILOBITE TESTING, INC.

DRILL STEM TEST REPORT

Well name#:	J&M Partners	Date:	12/30/2001
Location#:	8 13s 13w	Ticket #:	15615
		DST#	3

General Informaion:

Formation:	A-B LKC	Test Type:	Conventional	BHT:	102
Interval:	3045-3100	Tester:	Dan Bangle	OIL API:	
Total Depth:	3100	Elevation:	1832 ft(KB)	H2O Salinity:	
Hole Diameter:	7 7/8"		1827 ft(CF)		
Start Data:	12/30/2001	Tool Weight:	1300	Mud Type:	Chemical
Start Time:	21:15:00	Weight Set on Packers:	30000	Mud Weight:	9.3
Time tool opened:	22:57:00	Weight to Pull Loose:	33000	Viscosity:	41
Time Off Btm:	0:57:00	Initial String Weight:	30000	Water Loss:	11.2
End Date:	12/30/01	Final String Weight:	30000	Resistivity;	
End Time:	3:00:00	Drill Pipe Length:	3084	Salinity:	8200
		Drill Collar Length:			

Test Comment:		
IF - Weak, died in 10min.		
FF - No blow, flushed tool, no help		
Recovery Length(ft):	5ft	5ft in DP
	Description:	
	DM with oil spots	

Gas Volume Report

Recorder #:	13254	Open	Min:	Ins. Of water	Orifice	MCF/D
Pressure Summary:	Time:(min)			PSIG	size	
Initial Hydro-static:	1428					
Open to Flow (1):	44	30				
Shut-in (1):	44					
End Shut-in (1):	153	30				
Open to Flow (2):	44	30				
Shut-in (2):	44					
End Shut-in (2):	170	30				
Final Hydro-static:	1357					

CHART PAGE

This is a photocopy of the actual AK-1 recorder chart

