



WESTERN TESTING CO., INC.  
FORMATION TESTING

TICKET No 4558

P. O. BOX 1599 PHONE (316) 838-0601  
WICHITA, KANSAS 67201

Elevation \_\_\_\_\_ Formation \_\_\_\_\_ Eff. Pay \_\_\_\_\_ Ft.

District WKny Date 7-24-80 Customer Order No. \_\_\_\_\_

COMPANY NAME K&E oil Co. Petroleum

ADDRESS # 1 Brungardt B

LEASE AND WELL NO. Rubert H Brungardt COUNTY Ellis STATE KS Sec. 35 Twp. 13 Rge. 16

Mail Invoice To Same Co. Name \_\_\_\_\_ Address \_\_\_\_\_ No. Copies Requested 5

Mail Charts To Same Co. Name \_\_\_\_\_ Address \_\_\_\_\_ No. Copies Requested 5

Formation Test No. 1 Interval Tested from 3125 ft. to 3195 ft. Total Depth 3195 ft.

Packer Depth 3125 ft. Size 6 7/8 in. Packer Depth \_\_\_\_\_ ft. Size \_\_\_\_\_ in.

Packer Depth 3120 ft. Size 6 7/8 in. Packer Depth \_\_\_\_\_ ft. Size \_\_\_\_\_ in.

Depth of Selective Zone Set ✓

Top Recorder Depth (Inside) 3126 ft. Recorder Number 3473 Cap. 4000 PSI

Bottom Recorder Depth (Outside) 3195 ft. Recorder Number 2608 Cap. 4150 PSI

Below Straddle Recorder Depth \_\_\_\_\_ ft. Recorder Number \_\_\_\_\_ Cap. \_\_\_\_\_

Drilling Contractor Abercrombie 1 Drill Collar Length 278 I. D. 2.76 in.

Mud Type Starch Viscosity 36 Weight Pipe Length \_\_\_\_\_ I. D. \_\_\_\_\_ in.

Weight 9.9 Water Loss 15 cc. Drill Pipe Length 2906 I. D. 3.8 in.

Chlorides 80.000 P.P.M. Test Tool Length 30 ft. Tool Size 5/8 in.

Jars: Make None Serial Number \_\_\_\_\_ Anchor Length 76 ft. Size 5/8 in.

Did Well Flow? No Reversed Out \_\_\_\_\_ Surface Choke Size 3/4 in. Bottom Choke Size 3/4 in.

Main Hole Size 7 7/8 in. Tool Joint Size 6 7/8 in.

Blow: Weak Blow throughout TFP initial flow period  
Weak Blow did 5 min on TFP final flow period

Recovered 120 ft. of mud with oil spots

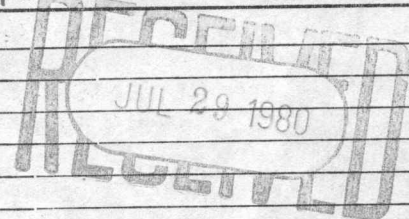
Recovered \_\_\_\_\_ ft. of \_\_\_\_\_

Recovered \_\_\_\_\_ ft. of \_\_\_\_\_

Recovered \_\_\_\_\_ ft. of \_\_\_\_\_

Recovered \_\_\_\_\_ ft. of \_\_\_\_\_

Remarks: 120 Total fluid



on 9:00 pm up 7:00 am Thank you

Time Set Packer 5:10 A.M. Time Started Off Bottom 4:10 A.M. Maximum Temperature 112°

Initial Hydrostatic Pressure \_\_\_\_\_ (A) 1630 P.S.I.

Initial Flow Period \_\_\_\_\_ Minutes 30 (B) 41 P.S.I. to (C) 41 P.S.I.

Initial Closed In Period \_\_\_\_\_ Minutes 30 (D) 746 P.S.I.

Final Flow Period \_\_\_\_\_ Minutes 30 (E) 51 P.S.I. to (F) 51 P.S.I.

Final Closed In Period \_\_\_\_\_ Minutes 30 (G) 512 P.S.I.

Final Hydrostatic Pressure \_\_\_\_\_ (H) 1600 P.S.I.

COMPANY TERMS

Western Testing Co., Inc. shall not be liable for damages of any kind to the property or personnel of the one for whom a test is made or for any loss suffered or sustained directly or indirectly through the use of its equipment, of its statements or opinion concerning the results of any test. Tools lost or damaged in the hole shall be paid at cost by the party for whom the test is made.

All charges subject to 12% interest after 60 days from date of invoice. Any expense incurred for collection will be added to the original amount.

Test Approved By \_\_\_\_\_  
Signature of Customer or his authorized representative

Western Representative Dean J. Smith

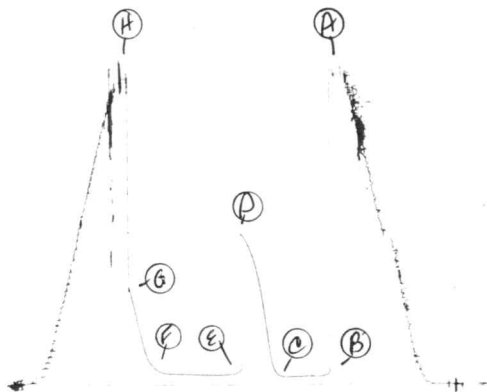
FIELD INVOICE

Open Hole Test	\$ <u>550.00</u>
Misrun	\$ _____
Straddle Test	\$ _____
Jars	\$ _____
Selective Zone	\$ _____
Safety Joint	\$ _____
Standby	\$ _____
Evaluation	\$ _____
Extra Packer	\$ _____
Circ. Sub.	\$ _____
Mileage <u>75mi</u>	\$ <u>56.25</u>
Fluid Sampler	\$ _____
Extra Charts	\$ _____
TOTAL	\$ <u>606.25</u>

JK #4558

4558

I



**WESTERN TESTING CO., INC.**  
**Pressure Data**

Date 7-24-80 Test Ticket No. 4558  
 Recorder No. 3473 Capacity 4000 Location 3136 Ft.  
 Clock No. \_\_\_\_\_ Elevation \_\_\_\_\_ Well Temperature 112 °F

Point	Pressure		Time Given	Time Computed
A Initial Hydrostatic Mud	<u>1654</u>	P.S.I.	<u>2:10</u>	<u>A</u> M
B First Initial Flow Pressure	<u>54</u>	P.S.I.	<u>30</u>	Mins. <u>30</u> Mins.
C First Final Flow Pressure	<u>47</u>	P.S.I.	<u>30</u>	Mins. <u>33</u> Mins.
D Initial Closed-in Pressure	<u>793</u>	P.S.I.	<u>30</u>	Mins. <u>50</u> Mins.
E Second Initial Flow Pressure	<u>64</u>	P.S.I.	<u>30</u>	Mins. <u>27</u> Mins.
F Second Final Flow Pressure	<u>61</u>	P.S.I.		
G Final Closed-in Pressure	<u>512</u>	P.S.I.		
H Final Hydrostatic Mud	<u>1630</u>	P.S.I.		

**PRESSURE BREAKDOWN**

**First Flow Pressure**  
 Breakdown: 6 Inc.  
 of 5 mins. and a  
 final inc. of 0 Min.

**Initial Shut-In**  
 Breakdown: 11 Inc.  
 of 3 mins. and a  
 final inc. of 0 Min.

**Second Flow Pressure**  
 Breakdown: 10 Inc.  
 of 5 mins. and a  
 final inc. of 0 Min.

**Final Shut-In**  
 Breakdown: 9 Inc.  
 of 3 mins. and a  
 final inc. of 0 Min.

Point Mins.	Press.	Point Minutes	Press.	Point Minutes	Press.	Point Minutes	Press.
P 1	<u>54</u>	0	<u>47</u>	0	<u>64</u>	0	<u>61</u>
P 2	<u>49</u>	3	<u>53</u>	5	<u>61</u>	3	<u>68</u>
P 3	<u>49</u>	6	<u>74</u>	10	<u>57</u>	6	<u>79</u>
P 4	<u>49</u>	9	<u>135</u>	15	<u>55</u>	9	<u>96</u>
P 5	<u>47</u>	12	<u>273</u>	20	<u>55</u>	12	<u>125</u>
P 6	<u>47</u>	15	<u>403</u>	25	<u>56</u>	15	<u>177</u>
P 7	<u>47</u>	18	<u>574</u>	30	<u>57</u>	18	<u>270</u>
P 8		21	<u>602</u>	35	<u>58</u>	21	<u>342</u>
P 9		24	<u>671</u>	40	<u>59</u>	24	<u>419</u>
P10		27	<u>726</u>	45	<u>60</u>	27	<u>512</u>
P11		30	<u>759</u>	50	<u>61</u>	<del>30</del>	<del>61</del>
P12		33	<u>793</u>	55		<del>33</del>	
P13		36		60		36	
P14		39		65		39	
P15		42		70		42	
P16		45		75		45	
P17		48		80		48	
P18		51		85		51	
P19		54		90		54	
P19		57				57	
P20		60				60	

Company K. & E. Petroleum Company Lease & Well No. Brungardt 'B' #1  
 Elevation ----- Formation ----- Effective Pay ----- Ft. Ticket No. 4558  
 Date 7/24/80 Sec. 35 Twp. 13S Range 16W County Ellis State Kansas  
 Test Approved by -- Western Representative Denis Fritz

Formation Test No. I Interval Tested from 3125 ft. to 3195 ft. Total Depth 3195 ft.  
 Packer Depth 3125 ft. Size 6 3/4 in. Packer Depth - ft. Size - in.  
 Packer Depth 3120 ft. Size 6 3/4 in. Packer Depth - ft. Size - in.  
 Depth of Selective Zone Set -

Top Recorder Depth (Inside) 3126 ft. Recorder Number 3473 Cap. 4000 PSI  
 Bottom Recorder Depth (Outside) 3195 ft. Recorder Number 2608 Cap. 4150 PSI  
 Below Straddle Recorder Depth - ft. Recorder Number - Cap. -

Drilling Contractor Abercrombie Drilling Rig #1 Drill Collar Length 278 I. D. 2.76 in.  
 Mud Type starch Viscosity 36 Weight Pipe Length - I. D. - in.  
 Weight 9.9 Water Loss 15 cc. Drill Pipe Length 2906 I. D. 3.8 in.  
 Chlorides 80,000 P.P.M. Test Tool Length 20 ft. Tool Size 5 1/2 in.  
 Jars: Make None Serial Number - Anchor Length 70 ft. Size 5 1/2 in.  
 Did Well Flow? No Reversed Out - Surface Choke Size 3/4 in. Bottom Choke Size 3/4 in.  
 Main Hole Size 7 7/8 in. Tool Joint Size 6 1/4 in.

Blow: Weak blow throughout initial flow period. Weak blow; died five minutes on final flow period.

Recovered 120 ft. of mud with oil spots  
 Recovered        ft. of         
 Recovered        ft. of         
 Recovered        ft. of         
 Recovered        ft. of       

Remarks:       

Time Set Packer(s) 2:10 A.M. Time Started Off Bottom 4:10 P.M. Maximum Temperature 112°  
 Initial Hydrostatic Pressure ..... (A) 1654 P.S.I.  
 Initial Flow Period ..... Minutes 30 (B) 54 P.S.I. to (C) 47 P.S.I.  
 Initial Closed In Period ..... Minutes 33 (D) 793 P.S.I.  
 Final Flow Period ..... Minutes 50 (E) 64 P.S.I. to (F) 61 P.S.I.  
 Final Closed In Period ..... Minutes 27 (G) 512 P.S.I.  
 Final Hydrostatic Pressure ..... (H) 1630 P.S.I.

**WESTERN TESTING CO., INC.**  
**Pressure Data**

Date 7-24-80 Test Ticket No. 4558  
 Recorder No. 3473 Capacity 4000 Location 3126 Ft.  
 Clock No. ----- Elevation -1/2----- Well Temperature 112 °F

Point	Pressure	Open Tool	Time	
			Given	Computed
A Initial Hydrostatic Mud	1654 P.S.I.		2:10	A.M.
B First Initial Flow Pressure	54 P.S.I.	First Flow Pressure	30	Mins. 30 Mins.
C First Final Flow Pressure	47 P.S.I.	Initial Closed-in Pressure	30	Mins. 33 Mins.
D Initial Closed-in Pressure	793 P.S.I.	Second Flow Pressure	30	Mins. 50 Mins.
E Second Initial Flow Pressure	64 P.S.I.	Final Closed-in Pressure	30	Mins. 27 Mins.
F Second Final Flow Pressure	61 P.S.I.			
G Final Closed-in Pressure	512 P.S.I.			
H Final Hydrostatic Mud	1630 P.S.I.			

**PRESSURE BREAKDOWN**

Point Mins.	Press.	Initial Shut-In		Second Flow Pressure		Final Shut-In	
		Point Minutes	Press.	Point Minutes	Press.	Point Minutes	Press.
P 1 0	54	0	47	0	64	0	61
P 2 5	59	3	53	5	61	3	68
P 3 10	59	6	74	10	57	6	79
P 4 15	59	9	135	15	55	9	96
P 5 20	47	12	273	20	55	12	125
P 6 25	47	15	403	25	56	15	177
P 7 30	47	18	514	30	57	18	270
P 8		21	602	35	58	21	342
P 9		24	671	40	59	24	419
P10		27	726	45	60	27	512
P11		30	759	50	61		
P12		33	793				
P13							
P14							
P15							
P16							
P17							
P18							
P19							
P20							



WESTERN TESTING CO., INC.
FORMATION TESTING

TICKET No 4559

P. O. BOX 1599 WICHITA, KANSAS 67201
PHONE (316) 838-0601

Elevation Formation Eff. Pay Ft.

District WKny Date 7-24-80 Customer Order No.

COMPANY NAME R & F Oil Co. Petroleum

ADDRESS 816 Union Center Wichita

LEASE AND WELL NO. Brungardt #1 COUNTY Ellis STATE KS Sec. 35 Twp. 135 Rge. 16 W

Mail Invoice To #1 Brungardt B No. Copies Requested 5

Co. Name Address No. Copies Requested 5

Mail Charts To same Address No. Copies Requested 5

Formation Test No. 2 Interval Tested from 3192 ft. to 3212 ft. Total Depth 3212 ft.
Packer Depth 3192 ft. Size 6 3/4 in. Packer Depth ft. Size in.
Packer Depth 3187 ft. Size 6 3/4 in. Packer Depth ft. Size in.

Depth of Selective Zone Set
Top Recorder Depth (Inside) 3193 ft. Recorder Number 3473 Cap. 4000 PSI
Bottom Recorder Depth (Outside) 3212 ft. Recorder Number 2608 Cap. 4150 PSI
Below Straddle Recorder Depth ft. Recorder Number Cap.

Drilling Contractor Abercrombie Rig #1 Drill Collar Length 270 I. D. 2.76 in.
Mud Type Starch Viscosity 42 Weight Pipe Length I. D. in.
Weight 9.6 Water Loss 14.2 cc. Drill Pipe Length 2942 I. D. 3.8 in.
Chlorides 76000 P.P.M. Test Tool Length 20 ft. Tool Size 5 1/2 in.
Jars: Make none Serial Number Anchor Length 20 ft. Size 5 1/2 in.
Did Well Flow? Reversed Out Surface Choke Size 2 1/4 in. Bottom Choke Size 3/4 in.
Main Hole Size 2 7/8 in. Tool Joint Size 6 1/4 in.

Blow: Strong Blow off bottom of bucket in 7 min. on FFP initial flow period
Strong Blow through bucket FFP final flow period

Recovered 186 ft. of 50cm Slightly oil cut mud
Recovered 248 ft. of H.G.O.C.M Heavy Gassy oil cut mud
Recovered ft. of Top 40% mud middle 25% mud Bottom 35% mud
Recovered ft. of 10% oil 20% oil 20% water
Recovered ft. of 30% U.L. 55% U.L. 20% oil gum loss
Remarks: Hit Bridge 8 1/2 stands off bottom OK 25% oil gum loss
Slid 12' to bottom OK 434' Total Fluid
on 11:30 am off 8:30 pm Thank you Rinned Two Packers

Time Set Packer(s) 2:30 A.M. P.M. Time Started Off Bottom 5:45 A.M. P.M. Maximum Temperature 114
Initial Hydrostatic Pressure (A) 1650 P.S.I.
Initial Flow Period Minutes 30 (B) 133 P.S.I. to (C) 154 P.S.I.
Initial Closed In Period Minutes 60 (D) 888 P.S.I.
Final Flow Period Minutes 45 (E) 195 P.S.I. to (F) 205 P.S.I.
Final Closed In Period Minutes 60 (G) 858 P.S.I.
Final Hydrostatic Pressure (H) 1589 P.S.I.

COMPANY TERMS

Western Testing Co., Inc. shall not be liable for damages of any kind to the property or personnel of the one for whom a test is made or for any loss suffered or sustained directly or indirectly through the use of its equipment, of its statements or opinion concerning the results of any test. Tools lost or damaged in the hole shall be paid at cost by the party for whom the test is made.

All charges subject to 12% interest after 60 days from date of invoice. Any expense incurred for collection will be added to the original amount.

Test Approved By Signature of Customer or his authorized representative

Western Representative Dennis J. [Signature]

JUL 29 1980

FIELD INVOICE

Open Hole Test \$ 550.00
Misrun \$
Straddle Test \$
Jars \$
Selective Zone \$
Safety Joint \$
Standby \$
Evaluation \$
Extra Packer WC \$
Circ. Sub. \$
Mileage \$
Fluid Sampler \$
Extra Charts \$

TOTAL \$ 550.00

# WESTERN TESTING CO., INC.

## Pressure Data

Date 7-24-80 Test Ticket No. 4559  
 Recorder No. 2473 Capacity 4000 Location 3193 Ft.  
 Clock No. \_\_\_\_\_ Elevation \_\_\_\_\_ Well Temperature 114 °F

Point	Pressure	Time Given	Time Computed
A Initial Hydrostatic Mud	<u>1652</u> P.S.I.	<u>2:30 P</u> M	
B First Initial Flow Pressure	<u>137</u> <del>140</del> P.S.I.	<u>30</u> Mins.	<u>30</u> Mins.
C First Final Flow Pressure	<u>160</u> P.S.I.	<u>60</u> Mins.	<u>60</u> Mins.
D Initial Closed-in Pressure	<u>890</u> P.S.I.	<u>45</u> Mins.	<u>45</u> Mins.
E Second Initial Flow Pressure	<u>200</u> P.S.I.	<u>60</u> Mins.	<u>57</u> Mins.
F Second Final Flow Pressure	<u>211</u> P.S.I.		
G Final Closed-in Pressure	<u>866</u> P.S.I.		
H Final Hydrostatic Mud	<u>1613</u> P.S.I.		

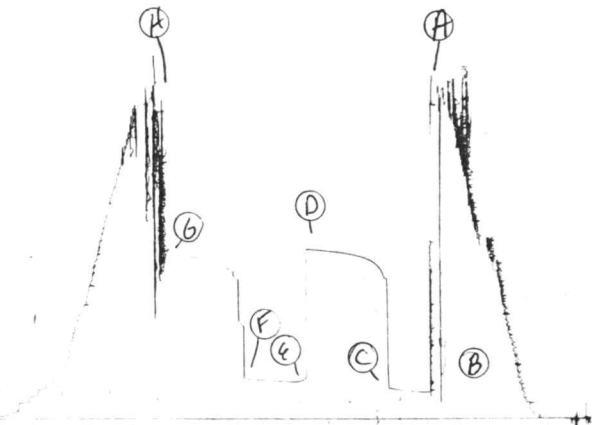
### PRESSURE BREAKDOWN

First Flow Pressure		Initial Shut-In		Second Flow Pressure		Final Shut-In	
Breakdown: <u>6</u> Inc.		Breakdown: <u>20</u> Inc.		Breakdown: <u>9</u> Inc.		Breakdown: <u>19</u> Inc.	
of <u>5</u> mins. and a		of <u>3</u> mins. and a		of <u>5</u> mins. and a		of <u>3</u> mins. and a	
final inc. of <u>0</u> Min.		final inc. of <u>0</u> Min.		final inc. of <u>0</u> Min.		final inc. of <u>0</u> Min.	
Point Mins.	Press.	Point Minutes	Press.	Point Minutes	Press.	Point Minutes	Press.
P 1	<u>0</u> <u>137</u>	<u>0</u> <u>160</u>	<u>0</u> <u>200</u>	<u>0</u> <u>211</u>			
P 2	<u>5</u> <u>137</u>	<u>3</u> <u>736</u>	<u>5</u> <u>197</u>	<u>3</u> <u>500</u>			
P 3	<u>10</u> <u>143</u>	<u>6</u> <u>756</u>	<u>10</u> <u>195</u>	<u>6</u> <u>734</u>			
P 4	<u>15</u> <u>143</u>	<u>9</u> <u>797</u>	<u>15</u> <u>197</u>	<u>9</u> <u>772</u>			
P 5	<u>20</u> <u>150</u>	<u>12</u> <u>812</u>	<u>20</u> <u>200</u>	<u>12</u> <u>787</u>			
P 6	<u>25</u> <u>154</u>	<u>15</u> <u>831</u>	<u>25</u> <u>201</u>	<u>15</u> <u>801</u>			
P 7	<u>30</u> <u>160</u>	<u>18</u> <u>841</u>	<u>30</u> <u>203</u>	<u>18</u> <u>816</u>			
P 8	<u>35</u> _____	<u>21</u> <u>851</u>	<u>35</u> <u>206</u>	<u>21</u> <u>821</u>			
P 9	<u>40</u> _____	<u>24</u> <u>856</u>	<u>40</u> <u>209</u>	<u>24</u> <u>827</u>			
P 10	<u>45</u> _____	<u>27</u> <u>862</u>	<u>45</u> <u>211</u>	<u>27</u> <u>835</u>			
P 11	<u>50</u> _____	<u>30</u> <u>865</u>	<u>50</u> _____	<u>30</u> <u>840</u>			
P 12	<u>55</u> _____	<u>33</u> <u>870</u>	<u>55</u> _____	<u>33</u> <u>844</u>			
P 13	<u>60</u> _____	<u>36</u> <u>874</u>	<u>60</u> _____	<u>36</u> <u>848</u>			
P 14	_____	<u>39</u> <u>876</u>	<u>65</u> _____	<u>39</u> <u>852</u>			
P 15	_____	<u>42</u> <u>878</u>	<u>70</u> _____	<u>42</u> <u>855</u>			
P 16	_____	<u>45</u> <u>880</u>	<u>75</u> _____	<u>45</u> <u>858</u>			
P 17	_____	<u>48</u> <u>882</u>	<u>80</u> _____	<u>48</u> <u>860</u>			
P 18	_____	<u>51</u> <u>884</u>	<u>85</u> _____	<u>51</u> <u>862</u>			
P 19	_____	<u>54</u> <u>886</u>	<u>90</u> _____	<u>54</u> <u>864</u>			
P 19	_____	<u>57</u> <u>888</u>	_____	<u>57</u> <u>866</u>			
P 20	_____	<u>60</u> <u>890</u>	_____	<u>60</u> _____			

3212

JKT H 2559  
I

4559



Company K. & E. Petroleum Inc. Lease & Well No. Brungardt "B" #1  
 Elevation ---- Formation ----- Effective Pay ---- Ft. Ticket No. 4559  
 Date 7/24/80 Sec. 35 Twp. 13S Range 16W County Ellis State Kansas  
 Test Approved by ? Western Representative Dennis Fritz

Formation Test No. 2 Interval Tested from 3192 ft. to 3212 ft. Total Depth 3212 ft.  
 Packer Depth 3192 ft. Size 6 3/4 in. Packer Depth - ft. Size - in.  
 Packer Depth 3187 ft. Size 6 3/4 in. Packer Depth - ft. Size - in.  
 Depth of Selective Zone Set -

Top Recorder Depth (Inside) 3193 ft. Recorder Number 3473 Cap. 4000 PST  
 Bottom Recorder Depth (Outside) 3212 ft. Recorder Number 2608 Cap. 4150 PST  
 Below Straddle Recorder Depth - ft. Recorder Number - Cap. -  
 Drilling Contractor Abererombie Drlg. Rig #1 Drill Collar Length 270 I. D. 2.76 in.  
 Mud Type starch Viscosity 42 Weight Pipe Length - I. D. - in.  
 Weight 9.6 Water Loss 14.2 cc. Drill Pipe Length 2942 I. D. 3.8 in.  
 Chlorides 76,000 P.P.M. Test Tool Length 20 ft. Tool Size 5 1/2 in.  
 Jars: Make None Serial Number - Anchor Length 20 ft. Size 5 1/2 in.  
 Did Well Flow? - Reversed Out - Surface Choke Size 3/4 in. Bottom Choke Size 3/4 in.  
 Main Hole Size 7 7/8 in. Tool Joint Size 6 1/4 in.

Blow: Strong blow off bottom of bucket in seven minutes on initial flow period. Strong blow throughout final flow period.

Recovered 186 ft. of slightly oil cut mud  
 Recovered 248 ft. of heavy gassy oil cut mud  
 Recovered ft. of Top 60% mud; Middle 25% mud; Bottom 35% mud  
 Recovered ft. of 10% oil 20% oil 20% water  
 Recovered ft. of 30% volume loss 55% volume loss 20% oil

Remarks: Hit bridge eight and one-half stands off bottom 25% volume loss  
Slid twelve feet to bottom.

Time Set Packer(s) 2:30 ~~A.M.~~ P.M. Time Started Off Bottom 5:45 ~~A.M.~~ P.M. Maximum Temperature 114°  
 Initial Hydrostatic Pressure ..... (A) 1642 P.S.I.  
 Initial Flow Period ..... Minutes 30 (B) 137 P.S.I. to (C) 160 P.S.I.  
 Initial Closed In Period ..... Minutes 60 (D) 890 P.S.I.  
 Final Flow Period ..... Minutes 45 (E) 200 P.S.I. to (F) 211 P.S.I.  
 Final Closed In Period ..... Minutes 57 (G) 866 P.S.I.  
 Final Hydrostatic Pressure ..... (H) 1613 P.S.I.

# WESTERN TESTING CO., INC.

## Pressure Data

Date 7-24-80 Test Ticket No. 4559  
 Recorder No. 3473 Capacity 4000 Location 3193 Ft.  
 Clock No. ----- Elevation ----- Well Temperature 114 °F

Point	Pressure		Time Given		Time Computed	
			P.	M	Mins.	Mins.
A Initial Hydrostatic Mud	1642	P.S.I.	2:30			
B First Initial Flow Pressure	137	P.S.I.	30		30	Mins.
C First Final Flow Pressure	160	P.S.I.	60		60	Mins.
D Initial Closed-in Pressure	890	P.S.I.	45		45	Mins.
E Second Initial Flow Pressure	200	P.S.I.	60		57	Mins.
F Second Final Flow Pressure	211	P.S.I.				
G Final Closed-in Pressure	866	P.S.I.				
H Final Hydrostatic Mud	1613	P.S.I.				

### PRESSURE BREAKDOWN

**First Flow Pressure**  
 Breakdown: 6 Inc.  
 of 5 mins. and a  
 final inc. of 0 Min.

**Initial Shut-In**  
 Breakdown: 20 Inc.  
 of 3 mins. and a  
 final inc. of 0 Min.

**Second Flow Pressure**  
 Breakdown: 9 Inc.  
 of 5 mins. and a  
 final inc. of 0 Min.

**Final Shut-In**  
 Breakdown: 19 Inc.  
 of 3 mins. and a  
 final inc. of 0 Min.

Point	Press.	Point	Press.	Point	Press.	Point	Press.
Mins.		Minutes		Minutes		Minutes	
P 1	137	0	160	0	220	0	211
P 2	137	3	736	5	197	3	500
P 3	143	6	756	10	195	6	734
P 4	143	9	797	15	197	9	772
P 5	150	12	812	20	200	12	787
P 6	154	15	831	25	201	15	801
P 7	160	18	841	30	203	18	816
P 8		21	851	35	206	21	821
P 9		24	856	40	209	24	827
P10		27	862	45	211	27	835
P11		30	865			30	840
P12		33	870			33	844
P13		36	874			36	848
P14		39	876			39	852
P15		42	878			42	855
P16		45	880			45	858
P17		48	882			48	860
P18		51	884			51	862
P19		54	886			54	864
P20		57	888			57	866
		60	890				



WESTERN TESTING CO., INC.  
FORMATION TESTING

TICKET NO. 4560

P. O. BOX 1599 PHONE (316) 838-0601  
WICHITA, KANSAS 67201

Elevation \_\_\_\_\_ Formation \_\_\_\_\_ Eff. Pay \_\_\_\_\_ Ft.

District Wkny Date 7-25 Customer Order No. \_\_\_\_\_

COMPANY NAME K&E Pet. Inc Petroleum

ADDRESS 816 Union Center B Wichita Wichita

LEASE AND WELL NO. Brungardt B #1 COUNTY Ellis STATE KS Sec. 35 Twp 13<sup>s</sup> Rge 16<sup>w</sup>

Mail Invoice To #1 Brungardt B Co. Name \_\_\_\_\_ Address \_\_\_\_\_ No. Copies Requested 5

Mail Charts To same Co. Name \_\_\_\_\_ Address \_\_\_\_\_ No. Copies Requested 5

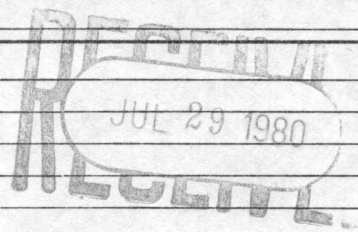
Formation Test No. 3 Interval Tested from 3212 ft. to 80 ft. Total Depth 3282 ft.  
Packer Depth 3212 ft. Size 6 3/4 in. Packer Depth \_\_\_\_\_ ft. Size \_\_\_\_\_ in.  
Packer Depth 3207 ft. Size 6 3/4 in. Packer Depth \_\_\_\_\_ ft. Size \_\_\_\_\_ in.  
Depth of Selective Zone Set

Top Recorder Depth (Inside) 3213 ft. Recorder Number 3473 Cap. 4000 PSI  
Bottom Recorder Depth (Outside) 3282 ft. Recorder Number 2608 Cap. 4150 PSI  
Below Straddle Recorder Depth ✓ ft. Recorder Number ✓ Cap. ✓

Drilling Contractor Abercrombie Rig #1 Drill Collar Length 270' I. D. 2.76 in.  
Mud Type Starch Viscosity 42 Weight Pipe Length \_\_\_\_\_ I. D. \_\_\_\_\_ in.  
Weight 9.6 Water Loss 15.6 cc. Drill Pipe Length 3012' I. D. 3.8 in.  
Chlorides 77,000 P.P.M. Test Tool Length 20 ft. Tool Size 5 1/2 in.  
Jars: Make none Serial Number \_\_\_\_\_ Anchor Length 70 ft. Size 5 1/2 in.  
Did Well Flow? No Reversed Out No Surface Choke Size 3/4 in. Bottom Choke Size 3/4 in.  
Main Hole Size 7 7/8 in. Tool Joint Size 6 1/4 in.

Blow: Weak Blow throughout - IFF initial flow period  
Weak Blow throughout FFP final flow period

Recovered 130 ft. of mud  
Recovered \_\_\_\_\_ ft. of  
Recovered \_\_\_\_\_ ft. of  
Recovered \_\_\_\_\_ ft. of  
Recovered \_\_\_\_\_ ft. of  
Remarks: \_\_\_\_\_



on 7:00 AM off 2:00 PM Thank you  
Time Set Packer(s) 10:10 AM Time Started Off Bottom 12:16 AM Maximum Temperature 120°  
Initial Hydrostatic Pressure \_\_\_\_\_ (A) 1681 P.S.I.  
Initial Flow Period \_\_\_\_\_ Minutes 30 (B) 41 P.S.I. to (C) 51 P.S.I.  
Initial Closed In Period \_\_\_\_\_ Minutes 30 (D) 868 P.S.I.  
Final Flow Period \_\_\_\_\_ Minutes 30 (E) 92 P.S.I. to (F) 102 P.S.I.  
Final Closed In Period \_\_\_\_\_ Minutes 30 (G) 848 P.S.I.  
Final Hydrostatic Pressure \_\_\_\_\_ (H) 1671 P.S.I.

COMPANY TERMS

Western Testing Co., Inc. shall not be liable for damages of any kind to the property or personnel of the one for whom a test is made or for any loss suffered or sustained directly or indirectly through the use of its equipment, of its statements or opinion concerning the results of any test. Tools lost or damaged in the hole shall be paid at cost by the party for whom the test is made.  
All charges subject to 12% interest after 60 days from date of invoice. Any expense incurred for collection will be added to the original amount.

Test Approved By \_\_\_\_\_  
Signature of Customer or his authorized representative  
Western Representative Dennis Fugh

FIELD INVOICE

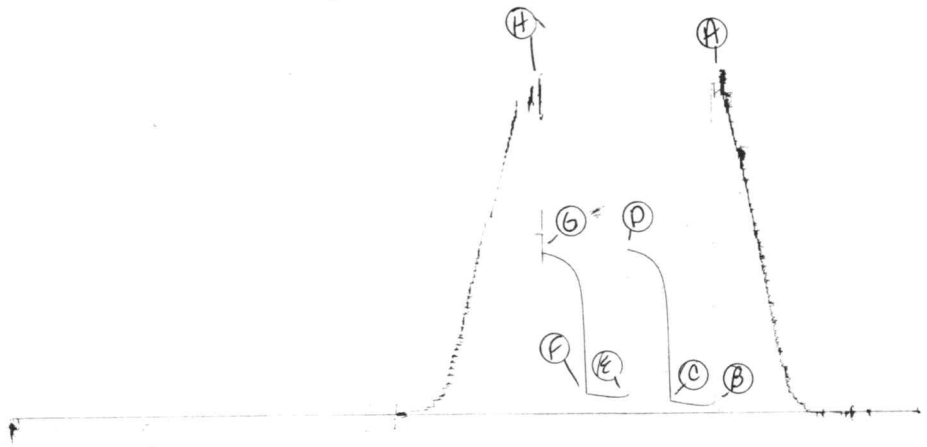
Open Hole Test	\$ <u>550.00</u>
Misrun	\$ _____
Straddle Test	\$ _____
Jars	\$ _____
Selective Zone	\$ _____
Safety Joint	\$ _____
Standby	\$ _____
Evaluation	\$ _____
Extra Packer	\$ _____
Circ. Sub.	\$ _____
Mileage	\$ _____
Fluid Sampler	\$ _____
Extra Charts	\$ _____
TOTAL	\$ <u>550.00</u>

DST #3  
3282

SRT #4560

T 5473  
4560

I



**WESTERN TESTING CO., INC.**  
**Pressure Data**

Date 7-25-80 Test Ticket No. 4560  
 Recorder No. 3473 Capacity 4000 Location 3213 Ft.  
 Clock No. \_\_\_\_\_ Elevation \_\_\_\_\_ Well Temperature 120 °F

Point	Pressure		Time Given	Time Computed
A Initial Hydrostatic Mud	<u>1693</u>	P.S.I.	<u>1040</u>	<u>A M</u>
B First Initial Flow Pressure	<u>47</u>	P.S.I.	<u>30</u>	<u>Mins. 30</u> Mins.
C First Final Flow Pressure	<u>64</u>	P.S.I.	<u>30</u>	<u>Mins. 30</u> Mins.
D Initial Closed-in Pressure	<u>866</u>	P.S.I.	<u>30</u>	<u>Mins. 30</u> Mins.
E Second Initial Flow Pressure	<u>94</u>	P.S.I.	<u>30</u>	<u>Mins. 30</u> Mins.
F Second Final Flow Pressure	<u>105</u>	P.S.I.	<u>30</u>	<u>Mins. 33</u> Mins.
G Final Closed-in Pressure	<u>847</u>	P.S.I.		
H Final Hydrostatic Mud	<u>1672</u>	P.S.I.		

**PRESSURE BREAKDOWN**

<b>First Flow Pressure</b> Breakdown: <u>6</u> Inc. of <u>5</u> mins. and a final inc. of <u>0</u> Min.	<b>Initial Shut-In</b> Breakdown: <u>10</u> Inc. of <u>3</u> mins. and a final inc. of <u>0</u> Min.	<b>Second Flow Pressure</b> Breakdown: <u>6</u> Inc. of <u>5</u> mins. and a final inc. of <u>0</u> Min.	<b>Final Shut-In</b> Breakdown: <u>11</u> Inc. of <u>3</u> mins. and a final inc. of <u>0</u> Min.
--	---	---	---

Point Mins.	Press.	Point Minutes	Press.	Point Minutes	Press.	Point Minutes	Press.
P 1	<u>0</u>	<u>0</u>	<u>64</u>	<u>0</u>	<u>94</u>	<u>0</u>	<u>105</u>
P 2	<u>5</u>	<u>3</u>	<u>569</u>	<u>5</u>	<u>86</u>	<u>3</u>	<u>569</u>
P 3	<u>10</u>	<u>6</u>	<u>665</u>	<u>10</u>	<u>86</u>	<u>6</u>	<u>691</u>
P 4	<u>15</u>	<u>9</u>	<u>754</u>	<u>15</u>	<u>90</u>	<u>9</u>	<u>750</u>
P 5	<u>20</u>	<u>12</u>	<u>785</u>	<u>20</u>	<u>95</u>	<u>12</u>	<u>773</u>
P 6	<u>25</u>	<u>15</u>	<u>807</u>	<u>25</u>	<u>99</u>	<u>15</u>	<u>797</u>
P 7	<u>30</u>	<u>18</u>	<u>824</u>	<u>30</u>	<u>105</u>	<u>18</u>	<u>810</u>
P 8	<u>35</u>	<u>21</u>	<u>837</u>	<u>35</u>		<u>21</u>	<u>821</u>
P 9	<u>40</u>	<u>24</u>	<u>848</u>	<u>40</u>		<u>24</u>	<u>829</u>
P 10	<u>45</u>	<u>27</u>	<u>854</u>	<u>45</u>		<u>27</u>	<u>837</u>
P 11	<u>50</u>	<u>30</u>	<u>866</u>	<u>50</u>		<u>30</u>	<u>841</u>
P 12	<u>55</u>	<u>38</u>		<u>55</u>		<u>33</u>	<u>847</u>
P 13	<u>60</u>	<u>36</u>		<u>60</u>		<u>36</u>	
P 14		<u>39</u>		<u>65</u>		<u>39</u>	
P 15		<u>42</u>		<u>70</u>		<u>42</u>	
P 16		<u>45</u>		<u>75</u>		<u>45</u>	
P 17		<u>48</u>		<u>80</u>		<u>48</u>	
P 18		<u>51</u>		<u>85</u>		<u>51</u>	
P 19		<u>54</u>		<u>90</u>		<u>54</u>	
P 20		<u>57</u>				<u>57</u>	
		<u>60</u>				<u>60</u>	

Company K & E Petroleum, Inc. Lease & Well No. Brungardt 'B' #1  
 Elevation ----- Formation --- Effective Pay ----- Ft. Ticket No. 4560  
 Date 7/25/80 Sec. 35 Twp. 13S Range 16W County Ellis State Kansas  
 Test Approved by ? Western Representative Dennis Fritz

Formation Test No. 3 Interval Tested from 3212 ft. to 3282 ft. Total Depth 3282 ft.  
 Packer Depth 3212 ft. Size 6 3/4 in. Packer Depth - ft. Size - in.  
 Packer Depth 3207 ft. Size 6 3/4 in. Packer Depth - ft. Size - in.

Depth of Selective Zone Set -  
 Top Recorder Depth (Inside) 3213 ft. Recorder Number 3473 Cap. 4000 PSI  
 Bottom Recorder Depth (Outside) 3282 ft. Recorder Number 2608 Cap. 4150 PSI  
 Below Straddle Recorder Depth - ft. Recorder Number - Cap. -

Drilling Contractor Abercrombie Drilling Rig #1 Drill Collar Length 270 I. D. 2.76 in.  
 Mud Type starch Viscosity 42 Weight Pipe Length - I. D. - in.  
 Weight 9.6 Water Loss 15.6 cc. Drill Pipe Length 3012 I. D. 3.8 in.  
 Chlorides 77,000 P.P.M. Test Tool Length 20 ft. Tool Size 5 1/2 in.  
 Jars: Make None Serial Number - Anchor Length 70 ft. Size 5 1/2 in.  
 Did Well Flow? No Reversed Out NO Surface Choke Size 3/4 in. Bottom Choke Size 3/4 in.  
 Main Hole Size 7 7/8 in. Tool Joint Size 6 1/4 in.

Blow: Weak blow throughout initial flow period.  
Weak blow throughout final flow period.

Recovered 130 ft. of mud  
 Recovered        ft. of         
 Recovered        ft. of         
 Recovered        ft. of         
 Recovered        ft. of       

Remarks:         
        
      

Time Set Packer(s) 10:10 A.M. Time Started Off Bottom 12:10 P.M. Maximum Temperature 120°  
 Initial Hydrostatic Pressure 1693 P.S.I. (A)  
 Initial Flow Period 30 Minutes (B) 47 P.S.I. to (C) 64 P.S.I.  
 Initial Closed In Period 30 Minutes (D) 866 P.S.I.  
 Final Flow Period 30 Minutes (E) 94 P.S.I. to (F) 105 P.S.I.  
 Final Closed In Period 33 Minutes (G) 847 P.S.I.  
 Final Hydrostatic Pressure 1672 P.S.I. (H)

**WESTERN TESTING CO., INC.**

**Pressure Data**

Date 7-25-80 Test Ticket No. 4560  
 Recorder No. 3473 Capacity 4000 Location 3213 Ft.  
 Clock No. ----- Elevation ----- Well Temperature 120 °F

Point	Pressure		Time Given	Time Computed
A Initial Hydrostatic Mud	1693	P.S.I.	10:10 A. M.	
B First Initial Flow Pressure	47	P.S.I.	30 Mins.	30 Mins.
C First Final Flow Pressure	64	P.S.I.	30 Mins.	30 Mins.
D Initial Closed-in Pressure	866	P.S.I.	30 Mins.	30 Mins.
E Second Initial Flow Pressure	94	P.S.I.	30 Mins.	33 Mins.
F Second Final Flow Pressure	105	P.S.I.		
G Final Closed-in Pressure	847	P.S.I.		
H Final Hydrostatic Mud	1672	P.S.I.		

**PRESSURE BREAKDOWN**

Point Mins.	First Flow Pressure	Initial Shut-In	Second Flow Pressure	Final Shut-In
	Breakdown: <u>6</u> Inc. of <u>5</u> mins. and a final inc. of <u>0</u> Min.	Breakdown: <u>10</u> Inc. of <u>3</u> mins. and a final inc. of <u>0</u> Min.	Breakdown: <u>6</u> Inc. of <u>5</u> mins. and a final inc. of <u>0</u> Min.	Breakdown: <u>11</u> Inc. of <u>3</u> mins. and a final inc. of <u>0</u> Min.
	Press.	Point Minutes	Press.	Point Minutes
P 1	47	0	46	0
P 2	41	3	569	3
P 3	41	6	665	6
P 4	4	9	754	9
P 5	50	12	785	12
P 6	56	15	807	15
P 7	64	18	824	18
P 8		21	837	21
P 9		24	848	24
P10		27	854	27
P11		30	866	30
P12				33
P13				
P14				
P15				
P16				
P17				
P18				
P19				
P20				



# WESTERN TESTING CO., INC.

## FORMATION TESTING

### TICKET NO 4561

P. O. BOX 1599 PHONE (316) 838-0601  
WICHITA, KANSAS 67201

Elevation \_\_\_\_\_ Formation \_\_\_\_\_ Eff. Pay \_\_\_\_\_ Ft.

District WKny Date 7-26 Customer Order No. ✓

COMPANY NAME K+E Petroleum

ADDRESS 816 Union Center Wichita 67202

LEASE AND WELL NO. Brungardt B #1 COUNTY Ellis STATE KS. Sec. 35 Twp. 13 Rge. 16W

Mail Invoice To #1 Brungardt "B" Co. Name \_\_\_\_\_ Address \_\_\_\_\_ No. Copies Requested 5

Mail Charts To same Address \_\_\_\_\_ No. Copies Requested 5

Formation Test No. <u>4</u>	Interval Tested from <u>3302</u> ft. to <u>3352</u> ft.	Total Depth <u>3352</u> ft.
Packer Depth <u>3302</u> ft.	Size <u>6 3/4</u> in.	Packer Depth <u>✓</u> ft. Size <u>✓</u> in.
Packer Depth <u>3297</u> ft.	Size <u>6 3/4</u> in.	Packer Depth <u>✓</u> ft. Size <u>✓</u> in.
Depth of Selective Zone Set <u>✓</u>		

Top Recorder Depth (Inside) <u>3303</u> ft.	Recorder Number <u>3473</u>	Cap. <u>4000 PSI</u>
Bottom Recorder Depth (Outside) <u>3352</u> ft.	Recorder Number <u>3608</u>	Cap. <u>4150 PSI</u>
Below Straddle Recorder Depth <u>✓</u> ft.	Recorder Number <u>✓</u>	Cap. <u>✓</u>

Drilling Contractor <u>Abercrombie Rig #1</u>	Drill Collar Length <u>370</u>	I. D. <u>2.176</u> in.
Mud Type <u>Starch</u> Viscosity <u>50</u>	Weight Pipe Length <u>3</u>	I. D. <u>✓</u> in.
Weight <u>9.9</u> Water Loss <u>11</u> cc.	Drill Pipe Length <u>3082</u>	I. D. <u>3.8</u> in.
Chlorides <u>77,400</u> P.P.M.	Test Tool Length <u>30</u> ft.	Tool Size <u>5 1/2</u> in.
Jars: Make _____ Serial Number _____	Anchor Length <u>50</u> ft.	Size <u>5 1/2</u> in.
Did Well Flow? <u>NO</u> Reversed Out <u>NO</u>	Surface Choke Size <u>3/4</u> in.	Bottom Choke Size <u>3/4</u> in.
	Main Hole Size <u>7 7/8</u> in.	Tool Joint Size <u>6 1/4</u> in.

Blow: Weak Blow throughout EFP initial flow period  
Weak Blow throughout EFP final flow period

Recovered 60 ft. of SOC in slightly oil out mud

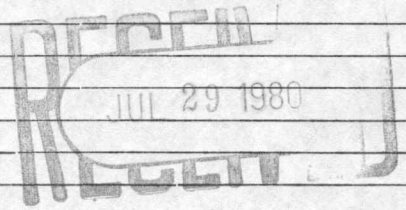
Recovered \_\_\_\_\_ ft. of \_\_\_\_\_

Recovered \_\_\_\_\_ ft. of 75% mud

Recovered \_\_\_\_\_ ft. of 3% oil

Recovered \_\_\_\_\_ ft. of 22% V.L. Volume loss

Remarks: \_\_\_\_\_



on 2:00 am. off.

Time Set Packer(s) <u>6:15</u> <u>A.M.</u>	Time Started Off Bottom <u>8:15</u> <u>A.M.</u>	Maximum Temperature <u>122°</u>
Initial Hydrostatic Pressure (A) <u>1732</u> P.S.I.	Initial Flow Period (B) <u>61</u> Minutes P.S.I. to (C) <u>61</u> P.S.I.	
Initial Closed In Period (D) <u>72</u> Minutes P.S.I.	Final Flow Period (E) <u>61</u> Minutes P.S.I. to (F) <u>61</u> P.S.I.	
Final Closed In Period (G) <u>72</u> Minutes P.S.I.	Final Hydrostatic Pressure (H) <u>1700</u> P.S.I.	

#### COMPANY TERMS

Western Testing Co., Inc. shall not be liable for damages of any kind to the property or personnel of the one for whom a test is made or for any loss suffered or sustained directly or indirectly through the use of its equipment, of its statements or opinion concerning the results of any test. Tools lost or damaged in the hole shall be paid at cost by the party for whom the test is made.

All charges subject to 12% interest after 60 days from date of invoice. Any expense incurred for collection will be added to the original amount.

Test Approved By \_\_\_\_\_  
Signature of Customer or his authorized representative

Western Representative Dennis J. [Signature]

#### FIELD INVOICE

Open Hole Test	\$ <u>550.00</u>
Misrun	\$ _____
Straddle Test	\$ _____
Jars	\$ _____
Selective Zone	\$ _____
Safety Joint	\$ _____
Standby	\$ _____
Evaluation	\$ _____
Extra Packer	\$ _____
Circ. Sub.	\$ _____
Mileage	\$ _____
Fluid Sampler	\$ _____
Extra Charts	\$ _____

TOTAL \$ 550.00

**WESTERN TESTING CO., INC.**  
**Pressure Data**

Date 7-26-80 Test Ticket No. 4561  
 Recorder No. 3473 Capacity 4000 Location 3303 Ft.  
 Clock No. \_\_\_\_\_ Elevation \_\_\_\_\_ Well Temperature 132 °F

Point	Pressure		Time Given	Time Computed
A Initial Hydrostatic Mud	<u>1762</u>	P.S.I.	<u>4:15 A</u>	<u>M</u>
B First Initial Flow Pressure	<u>57</u>	P.S.I.	<u>30</u> Mins.	<u>30</u> Mins.
C First Final Flow Pressure	<u>47</u>	P.S.I.	<u>30</u> Mins.	<u>30</u> Mins.
D Initial Closed-in Pressure	<u>64</u>	P.S.I.	<u>30</u> Mins.	<u>30</u> Mins.
E Second Initial Flow Pressure	<u>53</u>	P.S.I.	<u>30</u> Mins.	<u>30</u> Mins.
F Second Final Flow Pressure	<u>51</u>	P.S.I.		
G Final Closed-in Pressure	<u>57</u>	P.S.I.		
H Final Hydrostatic Mud	<u>1726</u>	P.S.I.		

**PRESSURE BREAKDOWN**

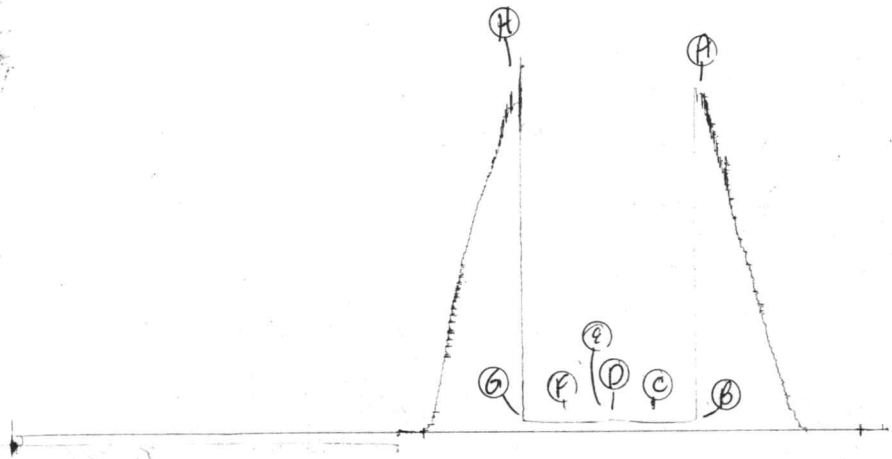
First Flow Pressure		Initial Shut-In		Second Flow Pressure		Final Shut-In	
Breakdown: <u>6</u> Inc.		Breakdown: <u>10</u> Inc.		Breakdown: <u>6</u> Inc.		Breakdown: <u>10</u> Inc.	
of <u>5</u> mins. and a		of <u>3</u> mins. and a		of <u>5</u> mins. and a		of <u>3</u> mins. and a	
final inc. of <u>0</u> Min.		final inc. of <u>0</u> Min.		final inc. of <u>0</u> Min.		final inc. of <u>0</u> Min.	
Point Mins.	Press.	Point Minutes	Press.	Point Minutes	Press.	Point Minutes	Press.
P 1	<u>57</u>	0	<u>47</u>	0	<u>53</u>	0	<u>51</u>
P 2	<u>51</u>	3	<u>47</u>	5	<u>52</u>	3	
P 3	<u>49</u>	6	<u>48</u>	10	<u>51</u>	6	
P 4	<u>49</u>	9	<u>50</u>	15		9	
P 5	<u>48</u>	12	<u>53</u>	20		12	<u>51</u>
P 6	<u>48</u>	15	<u>54</u>	25		15	<u>52</u>
P 7	<u>47</u>	18	<u>55</u>	30	<u>51</u>	18	<u>53</u>
P 8		21	<u>57</u>	35		21	<u>54</u>
P 9		24	<u>59</u>	40		24	<u>55</u>
P10		27	<u>61</u>	45		27	<u>56</u>
P11		30	<u>64</u>	50		30	<u>57</u>
P12		33		55		33	
P13		36		60		36	
P14		39		65		39	
P15		42		70		42	
P16		45		75		45	
P17		48		80		48	
P18		51		85		51	
P19		54		90		54	
P20		57				57	
		60				60	

AST #4  
3352

SKT #4561

T 3473  
4561

I



Company K & E Petroleum, Inc. Lease & Well No. Brungardt 'B' #1  
 Elevation -- Formation -- Effective Pay -- Ft. Ticket No. 4561  
 Date 7/26/80 Sec. 35 Twp. 13S Range 16W County Ellis State Kansas  
 Test Approved by ? Western Representative Denis Fritz

Formation Test No. 4 Interval Tested from 3302 ft. to 3352 ft. Total Depth 3352 ft.  
 Packer Depth 3302 ft. Size 6 3/4 in. Packer Depth - ft. Size - in.  
 Packer Depth 3297 ft. Size 6 3/4 in. Packer Depth - ft. Size - in.

Depth of Selective Zone Set -  
 Top Recorder Depth (Inside) 3303 ft. Recorder Number 3473 Cap. 4000 PSI  
 Bottom Recorder Depth (Outside) 3352 ft. Recorder Number 2608 Cap. 4150 PSI  
 Below Straddle Recorder Depth - ft. Recorder Number - Cap. -

Drilling Contractor Abercrombie Drlg. Rig #1 Drill Collar Length 270 I. D. 2.76 in.  
 Mud Type starch Viscosity 56 Weight Pipe Length - I. D. - in.  
 Weight 9.9 Water Loss 11 cc. Drill Pipe Length 3082 I. D. 3.8 in.  
 Chlorides 77,400 P.P.M. Test Tool Length 20 ft. Tool Size 5 1/2 in.  
 Jars: Make - Serial Number - Anchor Length 50 ft. Size 5 1/2 in.  
 Did Well Flow? No Reversed Out No Surface Choke Size 3/4 in. Bottom Choke Size 3/4 in.  
 Main Hole Size 7 7/8 in. Tool Joint Size 6 1/4 in.

Blow: Weak blow throughout initial flow period. Weak blow throughout final flow period.

Recovered 60 ft. of slightly oil cut mud  
 Recovered - ft. of 75% mud  
 Recovered - ft. of 3% oil  
 Recovered - ft. of 22% volume loss  
 Recovered - ft. of -

Remarks: -

Time Set Packer(s) 6:15 ~~P.M.~~ <sup>A.M.</sup> Time Started Off Bottom 8:15 ~~P.M.~~ <sup>A.M.</sup> Maximum Temperature 122°  
 Initial Hydrostatic Pressure ..... (A) 1762 P.S.I.  
 Initial Flow Period ..... Minutes 30 (B) 57 P.S.I. to (C) 47 P.S.I.  
 Initial Closed In Period ..... Minutes 30 (D) 64 P.S.I.  
 Final Flow Period ..... Minutes 30 (E) 53 P.S.I. to (F) 51 P.S.I.  
 Final Closed In Period ..... Minutes 30 (G) 57 P.S.I.  
 Final Hydrostatic Pressure ..... (H) 1726 P.S.I.

**WESTERN TESTING CO., INC.**  
**Pressure Data**

Date 7-26-80 Test Ticket No. 4561  
 Recorder No. 3473 Capacity 4000 Location 3303 Ft.  
 Clock No. ---- Elevation ----- Well Temperature 122 °F

Point	Pressure			Time Given		Time Computed	
				A.	M.		
A Initial Hydrostatic Mud	1762	P.S.I.	Open Tool	6:15			
B First Initial Flow Pressure	57	P.S.I.	First Flow Pressure	30	Mins.	30	Mins.
C First Final Flow Pressure	47	P.S.I.	Initial Closed-in Pressure	30	Mins.	30	Mins.
D Initial Closed-in Pressure	64	P.S.I.	Second Flow Pressure	30	Mins.	30	Mins.
E Second Initial Flow Pressure	53	P.S.I.	Final Closed-in Pressure	30	Mins.	30	Mins.
F Second Final Flow Pressure	51	P.S.I.					
G Final Closed-in Pressure	57	P.S.I.					
H Final Hydrostatic Mud	1726	P.S.I.					

**PRESSURE BREAKDOWN**

**First Flow Pressure**  
 Breakdown: 6 Inc.  
 of 5 mins. and a  
 final inc. of 0 Min.

**Initial Shut-In**  
 Breakdown: 10 Inc.  
 of 3 mins. and a  
 final inc. of 0 Min.

**Second Flow Pressure**  
 Breakdown: 6 Inc.  
 of 5 mins. and a  
 final inc. of 0 Min.

**Final Shut-In**  
 Breakdown: 10 Inc.  
 of 3 mins. and a  
 final inc. of 0 Min.

Point Mins.	First Flow Pressure		Initial Shut-In		Second Flow Pressure		Final Shut-In	
	Point Minutes	Press.	Point Minutes	Press.	Point Minutes	Press.	Point Minutes	Press.
P 1	0	57	0	47	0	53	0	51
P 2	5	51	3	47	5	52	3	51
P 3	10	49	6	48	10	51	6	51
P 4	15	49	9	50	15	51	9	51
P 5	20	48	12	53	20	51	12	51
P 6	25	48	15	54	25	51	15	52
P 7	30	47	18	55	30	51	18	53
P 8			21	57			21	54
P 9			24	59			24	55
P10			27	61			27	56
P11			30	64			30	57
P12								
P13								
P14								
P15								
P16								
P17								
P18								
P19								
P20								



WESTERN TESTING CO., INC.  
FORMATION TESTING

TICKET NO 4562

P. O. BOX 1599 PHONE (316) 838-0601  
WICHITA, KANSAS 67201

Elevation \_\_\_\_\_ Formation \_\_\_\_\_ Eff. Pay \_\_\_\_\_ Ft.

District WAnx Date 7-27-80 Customer Order No. \_\_\_\_\_

COMPANY NAME K&E Petroleum

ADDRESS 816 Union Center Wichita

LEASE AND WELL NO. Brunyardt B#1 COUNTY Ellis STATE KS Sec. 35 Twp 13 Rge 16W

Mail Invoice To 1 Brunyardt B No. Copies Requested 5

Co. Name \_\_\_\_\_ Address \_\_\_\_\_

Mail Charts To same No. Copies Requested 5

Address \_\_\_\_\_

Formation Test No. 5 Interval Tested from 3350 ft. to 80 ft. Total Depth 3380 ft.

Packer Depth 3350 ft. Size 6 7/8 in. Packer Depth \_\_\_\_\_ ft. Size \_\_\_\_\_ in.

Packer Depth 3345 ft. Size 6 7/8 in. Packer Depth \_\_\_\_\_ ft. Size \_\_\_\_\_ in.

Depth of Selective Zone Set ✓

Top Recorder Depth (Inside) 3351 ft. Recorder Number 3473 Cap. 4000 PSI

Bottom Recorder Depth (Outside) 3350 ft. Recorder Number 2608 Cap. 4150 PSI

Below Straddle Recorder Depth \_\_\_\_\_ ft. Recorder Number \_\_\_\_\_ Cap. \_\_\_\_\_

Drilling Contractor ABernambie #1 Drill Collar Length \_\_\_\_\_ I. D. \_\_\_\_\_ in.

Mud Type starch Viscosity 56 Weight Pipe Length \_\_\_\_\_ I. D. \_\_\_\_\_ in.

Weight 9.8 Water Loss 9.8 cc. Drill Pipe Length \_\_\_\_\_ I. D. \_\_\_\_\_ in.

Chlorides 22,000 P.P.M. Test Tool Length \_\_\_\_\_ ft. Tool Size \_\_\_\_\_ in.

Jars: Make \_\_\_\_\_ Serial Number \_\_\_\_\_ Anchor Length \_\_\_\_\_ ft. Size \_\_\_\_\_ in.

Did Well Flow? No Reversed Out No Surface Choke Size \_\_\_\_\_ in. Bottom Choke Size \_\_\_\_\_ in.

Main Hole Size \_\_\_\_\_ in. Tool Joint Size \_\_\_\_\_ in.

Blow: Weak Blow Die & 4 min. on FFP initial flow period  
No blow flow flushed tool No help

Recovered 10 ft. of mud

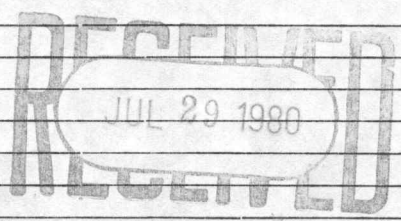
Recovered \_\_\_\_\_ ft. of \_\_\_\_\_

Recovered \_\_\_\_\_ ft. of \_\_\_\_\_

Recovered \_\_\_\_\_ ft. of \_\_\_\_\_

Recovered \_\_\_\_\_ ft. of \_\_\_\_\_

Remarks: \_\_\_\_\_



Time Set Packer(s) 9:10 A.M. P.M. Time Started Off Bottom 11:10 A.M. P.M. Maximum Temperature 124

Initial Hydrostatic Pressure (A) 1783 P.S.I.

Initial Flow Period Minutes 30 (B) 21 P.S.I. to (C) 21 P.S.I.

Initial Closed In Period Minutes 30 (D) 31 P.S.I.

Final Flow Period Minutes 30 (E) 21 P.S.I. to (F) 21 P.S.I.

Final Closed In Period Minutes 30 (G) 31 P.S.I.

Final Hydrostatic Pressure (H) 1773 P.S.I.

COMPANY TERMS

Western Testing Co., Inc. shall not be liable for damages of any kind to the property or personnel of the one for whom a test is made or for any loss suffered or sustained directly or indirectly through the use of its equipment, of its statements or opinion concerning the results of any test. Tools lost or damaged in the hole shall be paid at cost by the party for whom the test is made.

All charges subject to 12% interest after 60 days from date of invoice. Any expense incurred for collection will be added to the original amount.

Test Approved By \_\_\_\_\_  
Signature of Customer or his authorized representative

Western Representative [Signature]

FIELD INVOICE

Open Hole Test \$ 550.00

Misrun \$ \_\_\_\_\_

Straddle Test \$ \_\_\_\_\_

Jars \$ \_\_\_\_\_

Selective Zone \$ \_\_\_\_\_

Safety Joint \$ \_\_\_\_\_

Standby \$ \_\_\_\_\_

Evaluation \$ \_\_\_\_\_

Extra Packer \$ \_\_\_\_\_

Circ. Sub. \$ \_\_\_\_\_

Mileage \$ \_\_\_\_\_

Fluid Sampler \$ \_\_\_\_\_

Extra Charts \$ \_\_\_\_\_

TOTAL \$ 550.00

WESTERN TESTING CO., INC.

Pressure Data

Date 7-27-80 Test Ticket No. 4562  
 Recorder No. 3473 Capacity 4000 Location 3351 Ft.  
 Clock No. — Elevation — Well Temperature 124 °F

Point	Pressure		Time Given	Time Computed
A Initial Hydrostatic Mud	<u>1791</u>	P.S.I.	<u>9:10 P</u>	<u>M</u>
B First Initial Flow Pressure	<u>40</u>	P.S.I.	<u>30</u>	Mins. <u>30</u> Mins.
C First Final Flow Pressure	<u>25</u>	P.S.I.	<u>30</u>	Mins. <u>33</u> Mins.
D Initial Closed-in Pressure	<u>38</u>	P.S.I.	<u>30</u>	Mins. <u>30</u> Mins.
E Second Initial Flow Pressure	<u>30</u>	P.S.I.	<u>30</u>	Mins. <u>45</u> Mins.
F Second Final Flow Pressure	<u>29</u>	P.S.I.		
G Final Closed-in Pressure	<u>43</u>	P.S.I.		
H Final Hydrostatic Mud	<u>1760</u>	P.S.I.		

PRESSURE BREAKDOWN

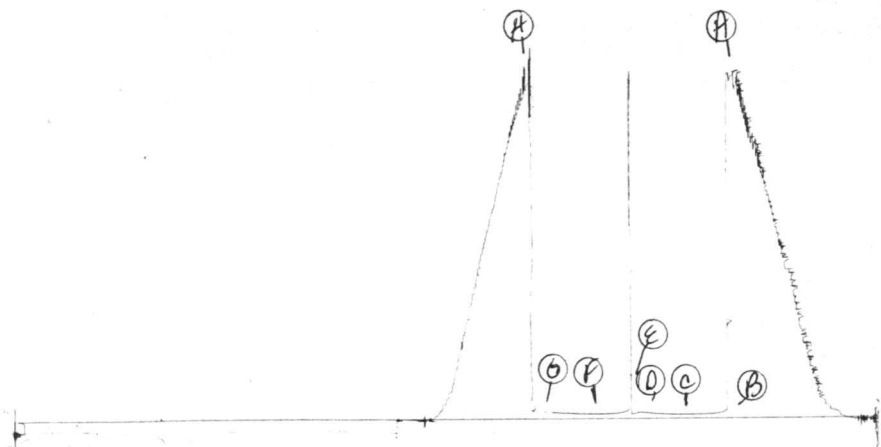
First Flow Pressure		Initial Shut-In		Second Flow Pressure		Final Shut-In	
Breakdown: <u>6</u> Inc.		Breakdown: <u>11</u> Inc.		Breakdown: <u>6</u> Inc.		Breakdown: <u>15</u> Inc.	
of <u>5</u> mins. and a		of <u>3</u> mins. and a		of <u>5</u> mins. and a		of <u>3</u> mins. and a	
final inc. of <u>0</u> Min.		final inc. of <u>0</u> Min.		final inc. of <u>0</u> Min.		final inc. of <u>0</u> Min.	
Point Mins.	Press.	Point Minutes	Press.	Point Minutes	Press.	Point Minutes	Press.
P 1	<u>0</u>	<u>0</u>	<u>25</u>	<u>0</u>	<u>30</u>	<u>0</u>	<u>29</u>
P 2	<u>5</u>	<u>3</u>	<u>25</u>	<u>5</u>	<u>39</u>	<u>3</u>	<u>29</u>
P 3	<u>10</u>	<u>6</u>	<u>26</u>	<u>10</u>	<u>37</u>	<u>6</u>	<u>30</u>
P 4	<u>15</u>	<u>9</u>	<u>26</u>	<u>15</u>	<u>32</u>	<u>9</u>	<u>30</u>
P 5	<u>20</u>	<u>12</u>	<u>27</u>	<u>20</u>	<u>30</u>	<u>12</u>	<u>31</u>
P 6	<u>25</u>	<u>15</u>	<u>27</u>	<u>25</u>	<u>30</u>	<u>15</u>	<u>32</u>
P 7	<u>30</u>	<u>18</u>	<u>28</u>	<u>30</u>	<u>29</u>	<u>18</u>	<u>33</u>
P 8	<u>35</u>	<u>21</u>	<u>29</u>	<u>35</u>		<u>21</u>	<u>34</u>
P 9	<u>40</u>	<u>24</u>	<u>30</u>	<u>40</u>		<u>24</u>	<u>35</u>
P10	<u>45</u>	<u>27</u>	<u>32</u>	<u>45</u>		<u>27</u>	<u>36</u>
P11	<u>50</u>	<u>30</u>	<u>35</u>	<u>50</u>		<u>30</u>	<u>38</u>
P12	<u>55</u>	<u>33</u>	<u>38</u>	<u>55</u>		<u>33</u>	<u>39</u>
P13	<u>60</u>	<u>36</u>		<u>60</u>		<u>36</u>	<u>40</u>
P14		<u>39</u>		<u>65</u>		<u>39</u>	<u>41</u>
P15		<u>42</u>		<u>70</u>		<u>42</u>	<u>42</u>
P16		<u>45</u>		<u>75</u>		<u>45</u>	<u>43</u>
P17		<u>48</u>		<u>80</u>		<u>48</u>	
P18		<u>51</u>		<u>85</u>		<u>51</u>	
P19		<u>54</u>		<u>90</u>		<u>54</u>	
P20		<u>57</u>				<u>57</u>	
		<u>60</u>				<u>60</u>	

3072

SK# 4562

558

I



Company K & E Petroleum, Inc. Lease & Well No. Brungardt "B" #1  
 Elevation ----- Formation ----- Effective Pay ----- Ft. Ticket No. 4562  
 Date 7/27/80 Sec. 35 Twp. 13S Range. 16W County Ellis State Kansas  
 Test Approved by ? Western Representative Dennis Fritz

Formation Test No. 5 Interval Tested from 3350 ft. to 3380 ft. Total Depth 3380 ft.  
 Packer Depth 3350 ft. Size 6 3/4 in. Packer Depth - ft. Size - in.  
 Packer Depth 3345 ft. Size 6 3/4 in. Packer Depth - ft. Size - in.

Depth of Selective Zone Set -  
 Top Recorder Depth (Inside) 3351 ft. Recorder Number 3473 Cap. 4000 PSI  
 Bottom Recorder Depth (Outside) 3380 ft. Recorder Number 2608 Cap. 4150 PSI  
 Below Straddle Recorder Depth - ft. Recorder Number - Cap. -

Drilling Contractor Abercrombie Drlg. Rig #1 Drill Collar Length ----- I. D. ----- in.  
 Mud Type starch Viscosity 56 Weight Pipe Length ----- I. D. ----- in.  
 Weight 9.8 Water Loss 9.8 cc. Drill Pipe Length ----- I. D. ----- in.  
 Chlorides 77,000 P.P.M. Test Tool Length ----- ft. Tool Size ----- in.  
 Jars: Make - Serial Number - Anchor Length ----- ft. Size ----- in.  
 Did Well Flow? No Reversed Out No Surface Choke Size ----- in. Bottom Choke Size ----- in.  
 Main Hole Size ----- in. Tool Joint Size ----- in.

Blow: Weak blow ; died four minutes on initial flow period. No blow final flow period.

Recovered 10 ft. of mud  
 Recovered ----- ft. of -----  
 Recovered ----- ft. of -----  
 Recovered ----- ft. of -----  
 Recovered ----- ft. of -----

Remarks: -----

Time Set Packer(s) 9:10 A.M. Time Started Off Bottom 11:10 P.M. Maximum Temperature 124°  
 Initial Hydrostatic Pressure ----- (A) 1791 P.S.I.  
 Initial Flow Period ----- Minutes 30 (B) 40 P.S.I. to (C) 25 P.S.I.  
 Initial Closed In Period ----- Minutes 33 (D) 38 P.S.I.  
 Final Flow Period ----- Minutes 30 (E) 30 P.S.I. to (F) 29 P.S.I.  
 Final Closed In Period ----- Minutes 45 (G) 43 P.S.I.  
 Final Hydrostatic Pressure ----- (H) 1760 P.S.I.

**WESTERN TESTING CO., INC.**  
**Pressure Data**

Date 7-27-80 Test Ticket No. 4562  
 Recorder No. 3473 Capacity 4000 Location 3351 Ft.  
 Clock No. --- Elevation ----- Well Temperature 124 °F

Point	Pressure		Time Given	Time Computed
A Initial Hydrostatic Mud	1791	P.S.I.	9:10 P.	M
B First Initial Flow Pressure	40	P.S.I.	30	Mins. 30 Mins.
C First Final Flow Pressure	25	P.S.I.	30	Mins. 33 Mins.
D Initial Closed-in Pressure	38	P.S.I.	30	Mins. 30 Mins.
E Second Initial Flow Pressure	30	P.S.I.	30	Mins. 45 Mins.
F Second Final Flow Pressure	29	P.S.I.		
G Final Closed-in Pressure	43	P.S.I.		
H Final Hydrostatic Mud	1760	P.S.I.		

**PRESSURE BREAKDOWN**

Point Mins.	First Flow Pressure	Initial Shut-In	Second Flow Pressure	Final Shut-In			
	Breakdown: <u>6</u> Inc. of <u>5</u> mins. and a final inc. of <u>0</u> Min.	Breakdown: <u>11</u> Inc. of <u>3</u> mins. and a final inc. of <u>0</u> Min.	Breakdown: <u>6</u> Inc. of <u>5</u> mins. and a final inc. of <u>0</u> Min.	Breakdown: <u>15</u> Inc. of <u>3</u> mins. and a final inc. of <u>0</u> Min.			
	Press.	Point Minutes	Press.	Point Minutes	Press.	Point Minutes	Press.
P 1	40	0	25	0	30	0	29
P 2	30	3	25	5	37	3	29
P 3	27	6	26	10	37	6	30
P 4	26	9	26	15	32	9	30
P 5	26	12	27	20	30	12	31
P 6	25	15	27	25	30	15	32
P 7	25	18	28	30	29	18	33
P 8		21	29			21	34
P 9		24	30			24	35
P10		27	32			27	36
P11		30	35			30	38
P12		33	38			33	39
P13						36	40
P14						39	41
P15						42	42
P16						45	43
P17							
P18							
P19							
P20							