

State Geological Survey WICHITA, BRANCH

KANSAS DRILLERS LOG

S. 34 T. 13 R. 17 E. W

Loc. SW SW NE

County Ellis

API No. 15 — 051 — 21,604
County Number

Operator

R. P. Nixon Operations

Address

207 West 12th Hays, Kansas 67601

Well No.

#2

Lease Name

B. Braun

Footage Location

330

feet from (N) ☒ line

330

feet from ~~(E)~~ (W) line

Principal Contractor

BUFFALO DRG CO

Geologist

DAN A NIXON

Spud Date

12-9-78

Total Depth

3468

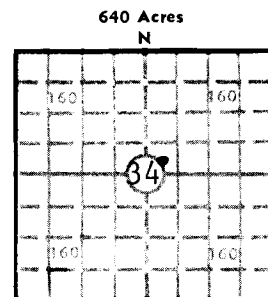
P.B.T.D.

Date Completed

12-16-78

Oil Purchaser

CLEAR CREEK INC



Locate well correctly

Elev.: Gr. 1935

DF 1937 KB 1940

CASING RECORD

Report of all strings set — surface, intermediate, production, etc.

Purpose of string	Size hole drilled	Size casing set (in O.D.)	Weight lbs/ft.	Setting depth	Type cement	Sacks	Type and percent additives
SURFACE	12 1/4	8 5/8	28#	202'	COMMON	150	60/40 pozmix 2%gel 3%cc
PRODUCTION	7 7/8	4 1/2"		3459	COMMON	125	10% SALT

LINER RECORD

PERFORATION RECORD

Top ft.	Bottom ft.	Sacks cement	Shots per ft.	Size & type	Depth interval
XXXXXXXXXX	XXXXXXXXXX	XXXXXXXXXX	ONE	L.E.	3239-41
					3258-60
TUBING RECORD					
Size	Setting depth	Packer set at			
2"	3465	-----			

ACID, FRACTURE, SHOT, CEMENT SQUEEZE RECORD

Amount and kind of material used	Depth interval treated
ACID 500 GALLONS @ 15%	ARBUCKLE
ACID 1500 GALLONS @ 15%	ARBUCKLE
ACID 4000 GALLONS @ 28%	3258-60 3239-41

INITIAL PRODUCTION

Date of first production		Producing method (flowing, pumping, gas lift, etc.)			
APRIL 1 1979		PUMPING			
RATE OF PRODUCTION PER 24 HOURS	Oil 37 bbls.	Gas MCF	Water 17 bbls.	Gas-oil ratio CFPB	
Disposition of gas (vented, used on lease or sold)			Producing interval(s) 3258-60 3239-41 ARBUCKLE		

INSTRUCTIONS: As provided in KCC Rule 82-2-125, within 90 days after completion of a well, one completed copy of this Drillers Log shall be transmitted to the State Geological Survey of Kansas, 4150 Monroe Street, Wichita, Kansas 67209. Copies of this form are available from the Conservation Division, State Corporation Commission, 3830 So. Meridian (P.O. Box 17027), Wichita, Kansas 66217. Phone AC 316-522-2206. If confidential custody is desired, please note Rule 82-2-125. Drillers Logs will be on open file in the Oil and Gas Division, State Geological Survey of Kansas, Lawrence, Kansas 66044.

Operator R P NIXON OPERATIONS		DESIGNATE TYPE OF COMP.: OIL, GAS, DRY HOLE, SWDW, ETC.: XXXXXXXX OIL		
Well No. TWO	Lease Name B BRAUN			
34 T 13 R 17 ^{EC} _W		ELLIS COUNTY KANSAS		
WELL LOG Show all important zones of porosity and contents thereof; cored intervals, and all drill-stem tests, including depth interval tested, cushion used, time tool open, flowing and shut-in pressures, and recoveries.		SHOW GEOLOGICAL MARKERS, LOGS RUN, OR OTHER DESCRIPTIVE INFORMATION.		
FORMATION DESCRIPTION, CONTENTS, ETC.	TOP	BOTTOM	NAME	DEPTH
ANHYDRITE (DRLRS)	1088			
QUEEN HILL SHALE	3086			
HEEBNER SHALE	3169			
TORONTO LIME	3188			
LANSING-KANSAS CITY	3214			
BASE OF KANSAS CITY	3435			
ARBUCKLE DOLOMITE	3456			
R T D	3468			
USE ADDITIONAL SHEETS, IF NECESSARY, TO COMPLETE WELL RECORD.				
Date Received	<div>Monroe N. Stefan</div> <div>Signature</div> <div>SECY</div> <div>Title</div> <div>6-26-81</div> <div>Date</div>			