

MILLER TESTING COMPANY

Box 547

GREAT BEND, KANSAS

Company GRAHAM-MICHAELIS CORP.

Lease and Well No. NUSS #1-26

County ELLIS State KANSAS

Date 6-27-79

Formation Test No. 2 Total Depth 3310 Elev. 2080 K.B.
Interval Tested 3254 To 3310 Anchor Length 56'
Size Hole 7 7/8 Size Drill Pipe 4 1/2 X.H. Size Packer 6 3/4
Mud Weight 9.8 Viscosity 38 Water Loss 11.6 c.c. Bottom Hole Temp. °F
Chokes: Top 1/2 Bottom 1/2 Ticket No. 17233
Length of Drill Collar 299' I. D. 2.25 Length Flexweight 285' I. D. 2.70

RECOVERY

WEAK BLOW, DIED IN 5 MINUTES. FLUSHED TOOL, NO HELP.

15 FEET OF MUD.

Lease and Well No.

NUSS #1-26

26-13-18

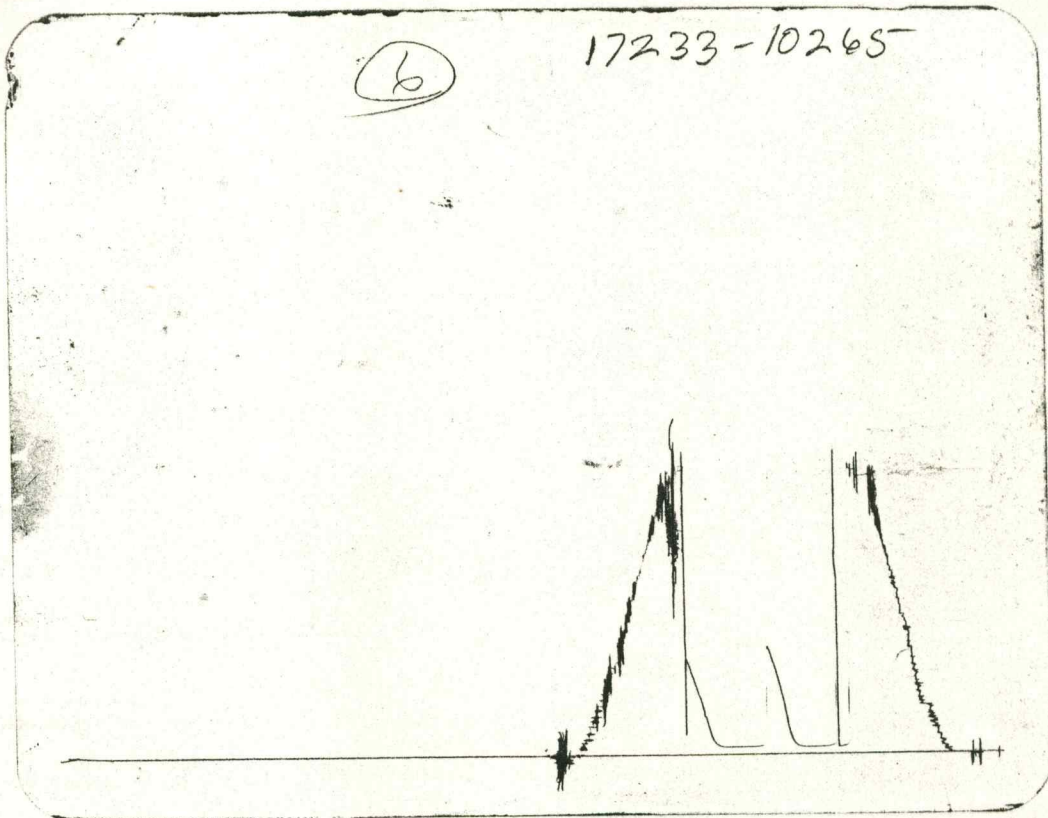
NE/4 SW/4 NE/4

Formation Test No.

2

(6)

17233-10265



Tool Open: 1st Flow 30 hrs. 30 mins: Shut-in Initial 30 hr. 30 min: 2nd Flow 30 hr. 30 min: Shut-in Final 30 hr. 30 min.

	Field Reading	Corrected Reading
(A) Initial Hydrostatic Pressure	<u>1739</u>	<u>1728</u>
(B) Initial 1st Flow Pressure	<u>34</u>	<u>41</u>
(C) Final 1st Flow Pressure	<u>34</u>	<u>41</u>
(D) Initial Shut-in Pressure	<u>646</u>	<u>644</u>
(E) Initial 2nd Flow Pressure	<u>34</u>	<u>41</u>
(F) Final 2nd Flow Pressure	<u>34</u>	<u>41</u>
(G) Final Shut-in Pressure	<u>553</u>	<u>570</u>
(H) Final Hydrostatic Pressure	<u>1704</u>	<u>1707</u>

17233

MILLER TESTING COMPANY

Box 547

GREAT BEND, KANSAS

Company GRAHAM-MICHAELIS CORP.

Lease and Well No. NUSS #1-26

County ELLIS State KANSAS Date 6-28-79

Formation Test No. 3 Total Depth 3430 Elev. 2080 K.B.

Interval Tested 3410 To 3430 Anchor Length 20'

Size Hole 7 7/8 Size Drill Pipe 4 1/2 X.H. Size Packer 6 3/4

Mud Weight 9.8 Viscosity 42 Water Loss 14.6 c.c. Bottom Hole Temp. °F

Chokes: Top 1/2 Bottom 1/2 Ticket No. 17234

Length of Drill Collar 299 I. D. 2.25 Length Flexweight 285 I. D. 2.70

RECOVERY

WEAK BLOW, DIED IN 10 MINUTES. FLUSHED TOOL, NO HELP.

10 FEET OF MUD.
BOTTOM (OUTSIDE) CHART INDICATES ANCHOR PLUGGED DURING
SECOND FLOW AND F.B.H.P.

Lease and Well No.

NUSS #1-26

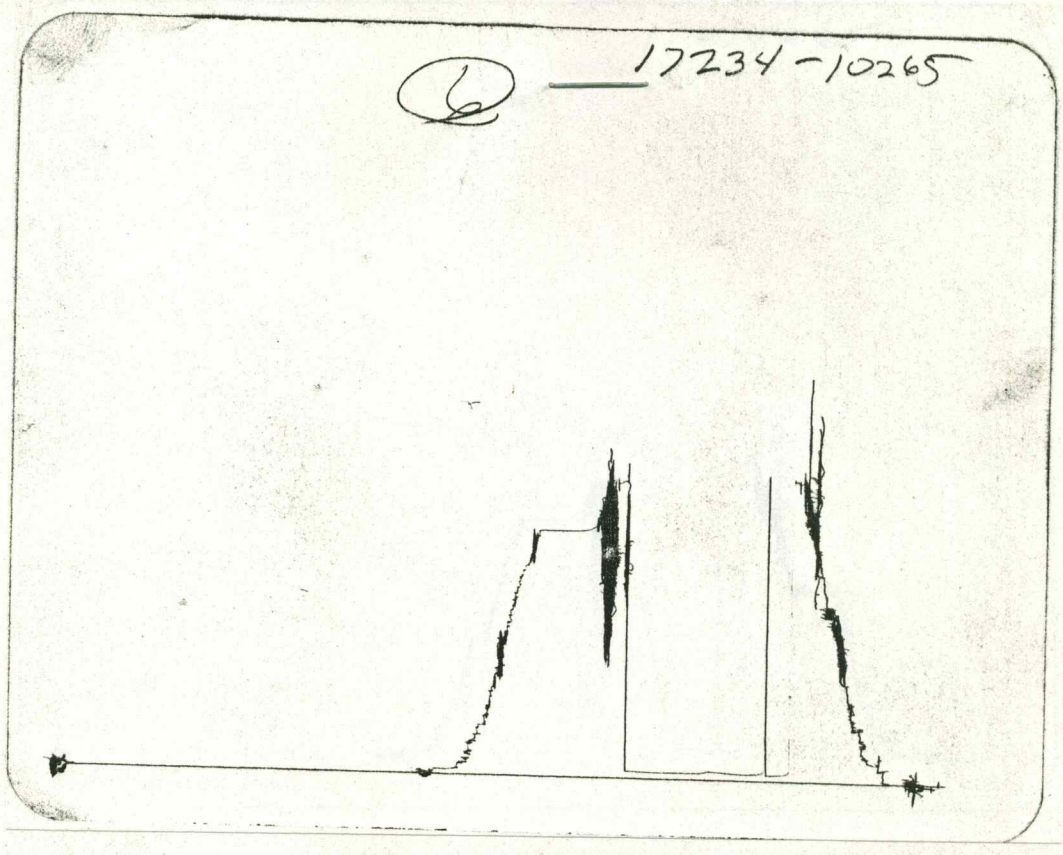
26-13-18

NE/4 SW/4 NE/4

Formation Test No.

3

② 17234-10265



Tool Open: 1st Flow 30 hrs: Shut-in Initial 30 min: 2nd Flow 30 hrs: Shut-in Final 30 min.

	Field Reading	Corrected Reading
(A) Initial Hydrostatic Pressure	<u>1832</u>	<u>1833</u>
(B) Initial 1st Flow Pressure	<u>34</u>	<u>37</u>
(C) Final 1st Flow Pressure	<u>34</u>	<u>37</u>
(D) Initial Shut-in Pressure	<u>57</u>	<u>53</u>
(E) Initial 2nd Flow Pressure	<u>34</u>	<u>37</u>
(F) Final 2nd Flow Pressure	<u>34</u>	<u>37</u>
(G) Final Shut-in Pressure	<u>34</u>	<u>37</u>
(H) Final Hydrostatic Pressure	<u>1786</u>	<u>1786</u>

MILLER TESTING COMPANY

Box 547

GREAT BEND, KANSAS

Company GRAHAM-MICHAELIS CORP.

Lease and Well No. NUSS #1-26

County ELLIS State KANSAS Date 6-28-79

Formation Test No. 4 Total Depth 3510 Elev. 2080 K.B.

Interval Tested 3430 To 3510 Anchor Length 80'

Size Hole 7 7/8 Size Drill Pipe 4 1/2 X.H. Size Packer 6 3/4

Mud Weight 9.8 Viscosity 48 Water Loss 8.2 c.c. Bottom Hole Temp. °F

Chokes: Top 1/2 Bottom 1/2 Ticket No. 17235

Length of Drill Collar 299 I. D. 2.25 Length Flexweight 285 I. D. 2.70

RECOVERY

WEAK BLOW, DIED IN 10 MINUTES. FLUSHED TOOL, NO HELP.

20 FEET OF MUD.

Lease and Well No.

NUSS #1-26

26-13-18

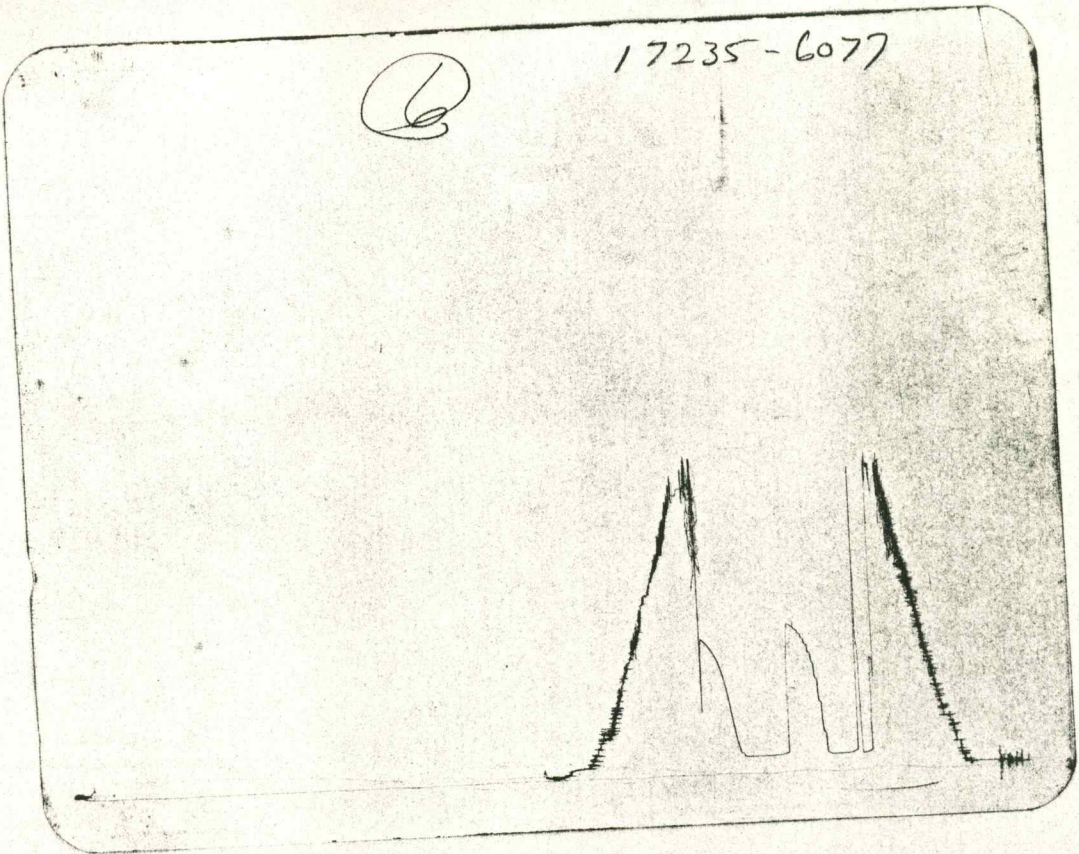
NE/4 SW/4 NE/4

Formation Test No.

4

17235-6077

Q



Tool Open: 1st Flow hr. 30 mins: Shut-in Initial hr. 30 min: 2nd Flow hr. 30 min: Shut-in Final hr. 30 min

	Field Reading	Corrected Reading
(A) Initial Hydrostatic Pressure	<u>1890</u>	<u>1933</u>
(B) Initial 1st Flow Pressure	<u>103</u>	<u>103</u>
(C) Final 1st Flow Pressure	<u>115</u>	<u>103</u>
(D) Initial Shut-in Pressure	<u>902</u>	<u>940</u>
(E) Initial 2nd Flow Pressure	<u>115</u>	<u>108</u>
(F) Final 2nd Flow Pressure	<u>115</u>	<u>108</u>
(G) Final Shut-in Pressure	<u>832</u>	<u>865</u>
(H) Final Hydrostatic Pressure	<u>1855</u>	<u>1817</u>

17235