

DRILL-STEM TEST DATA

Well Name: YOUNKIN #1
Company : ERIC WADDELL COMPANY
Location - Sec: 2 **Twp:** 13S **Rge:** 34W
County: LOGAN **State:** KS
Date: 30-Sep-95

TRILOBITE TESTING L.L.C.

OPERATOR : Eric Waddell Co
 WELL NAME: Younkin #1
 LOCATION : 2-13S-34W, Logan Cty, KS
 INTERVAL : 3973.00 To 4000.00 ft

DATE 09/28/95
 KB 3023.00 ft
 GR 3018.00 ft
 TD 4000.00 ft

TICKET NO: 7956
 FORMATION: Kansas City
 TEST TYPE: CONVENTIONAL

DST #1

RECORDER DATA

Mins		Field	1	2	3	4	TIME DATA-----
PF 45	Rec.	11057	11057	11058			PF Fr. 1801 to 1846 hr
SI 45	Range(Psi)	4500.0	4500.0	4500.0	0.0	0.0	IS Fr. 1846 to 1931 hr
SF 45	Clock(hrs)	21048	21048	22347			SF Fr. 1931 to 2016 hr
FS 45	Depth(ft)	3974.0	3974.0	3997.0	0.0	0.0	FS Fr. 2016 to 2101 hr

	Field	1	2	3	4	
A. Init Hydro	1914.0	1920.0	0.0	0.0	0.0	T STARTED hr
B. First Flow	33.0	57.0	0.0	0.0	0.0	T ON BOTM hr
B1. Final Flow	235.0	263.0	0.0	0.0	0.0	T OPEN 1801 hr
C. In Shut-in	1186.0	1214.0	0.0	0.0	0.0	T PULLED 2101 hr
D. Init Flow	319.0	345.0	0.0	0.0	0.0	T OUT hr
E. Final Flow	459.0	487.0	0.0	0.0	0.0	
F. Fl Shut-in	1186.0	1219.0	0.0	0.0	0.0	TOOL DATA-----
G. Final Hydro	1903.0	1892.0	0.0	0.0	0.0	Tool Wt. 0.00 lbs
Inside/Outside	I	I	O			Wt Set On Packer 0.00 lbs
						Wt Pulled Loose 0.00 lbs
						Initial Str Wt 0.00 lbs
						Unseated Str Wt 0.00 lbs
						Bot Choke 0.75 in
						Hole Size 7.88 in
						D Col. ID 2.25 in
						D. Pipe ID 3.80 in
						D.C. Length 249.00 ft
						D.P. Length 0.00 ft

RECOVERY

Tot Fluid 1140.00 ft of 249.00 ft in DC and 891.00 ft in DP
 140.00 ft of Watery mud - 70% water, 30% mud
 120.00 ft of Slightly muddy water - 90% water, 10% mud
 880.00 ft of Salt water - 100% water

MUD DATA-----

Mud Type	Chemical
Weight	8.90 lb/c
Vis.	49.00 S/L
W.L.	8.00 in3
F.C.	0.00 in
Mud Drop	
Amt. of fill	0.00 ft
Btm. H. Temp.	0.00 F
Hole Condition	
% Porosity	0.00
Packer Size	6.75 in
No. of Packers	2
Cushion Amt.	0.00
Cushion Type	
Reversed Out	
Tool Chased	
Tester	Shane McBride
Co. Rep.	Eric Waddell
Contr.	Mallard
Rig #	1
Unit #	
Pump T.	

RW 1.0 @ 61 F
 SALINITY 86000.00 P.P.M. A.P.I. Gravity 0.00

BLOW DESCRIPTION

Initial Blow -
 Bottom of bucket in 10 min, fair blow

Initial Shutin -
 Bled off blow, no return blow

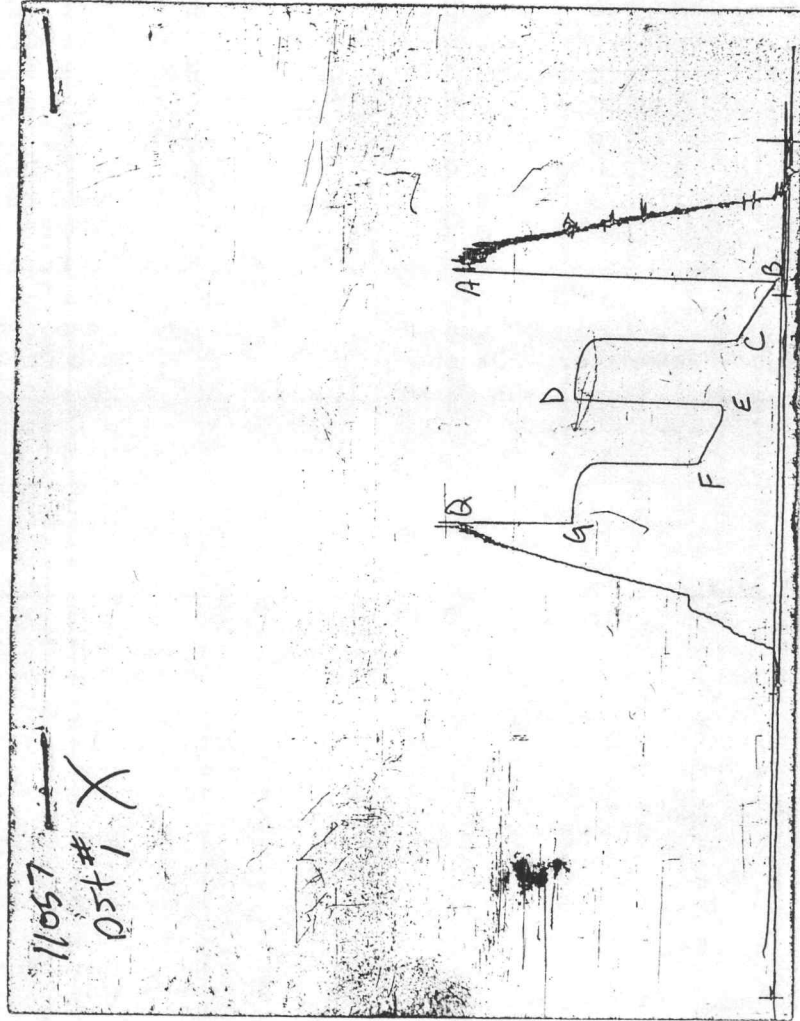
Final Blow -
 Bottom of bucket in 12 min, fair blow

Final Shutin -
 Bled off blow, no return blow

SAMPLES:
 SENT TO:

Test Successful: Y

CHART PAGE



This is an actual photograph of recorder chart

TRILOBITE TESTING L.L.C.

OPERATOR : Eric Waddell Company
 WELL NAME: Younkin #1
 LOCATION : 2-13S-34W, Logan Cty KS
 INTERVAL : 4273.00 To 4325.00 ft

DATE 09/29/95
 KB 3023.00 ft TICKET NO: 7957 DST #2
 GR 3018.00 ft FORMATION: Marmaton
 TD 4325.00 ft TEST TYPE: CONVENTIONAL

RECORDER DATA

Mins		Field	1	2	3	4	TIME DATA-----
PF 30	Rec.	11057	11057	11058			PF Fr. 0129 to 0159 hr
SI 45	Range(Psi)	4500.0	4500.0	4500.0	0.0	0.0	IS Fr. 0159 to 0244 hr
SF 60	Clock(hrs)	21048	21048	22347			SF Fr. 0244 to 0344 hr
FS 45	Depth(ft)	4289.0	4289.0	4322.0	0.0	0.0	FS Fr. 0344 to 0429 hr

	Field	1	2	3	4		
A. Init Hydro	2140.0	2147.0	0.0	0.0	0.0	T STARTED	hr
B. First Flow	22.0	29.0	0.0	0.0	0.0	T ON BOTM	hr
B1. Final Flow	50.0	56.0	0.0	0.0	0.0	T OPEN	0129 hr
C. In Shut-in	1208.0	1206.0	0.0	0.0	0.0	T PULLED	0429 hr
D. Init Flow	89.0	94.0	0.0	0.0	0.0	T OUT	hr
E. Final Flow	123.0	123.0	0.0	0.0	0.0		
F. Fl Shut-in	1062.0	1065.0	0.0	0.0	0.0	TOOL DATA-----	
G. Final Hydro	2117.0	2115.0	0.0	0.0	0.0	Tool Wt.	0.00 lbs
Inside/Outside	I	I	O			Wt Set On Packer	0.00 lbs
						Wt Pulled Loose	0.00 lbs
						Initial Str Wt	0.00 lbs
						Unseated Str Wt	0.00 lbs
						Bot Choke	0.75 in
						Hole Size	7.88 in
						D Col. ID	2.25 in
						D. Pipe ID	3.80 in
						D.C. Length	249.00 ft
						D.P. Length	0.00 ft

RECOVERY

Tot Fluid 280.00 ft of 249.00 ft in DC and 31.00 ft in DP
 20.00 ft of Free oil - 100% oil
 30.00 ft of Slightly oil cut watery mud - 10% oil,
 20% water, 70% mud
 115.00 ft of Slightly oily water cut mud - 5% oil,
 55% water, 40% mud
 115.00 ft of Mud cut water - 90% water, 10% mud, trace oil

Wt Set On Packer	0.00 lbs
Wt Pulled Loose	0.00 lbs
Initial Str Wt	0.00 lbs
Unseated Str Wt	0.00 lbs
Bot Choke	0.75 in
Hole Size	7.88 in
D Col. ID	2.25 in
D. Pipe ID	3.80 in
D.C. Length	249.00 ft
D.P. Length	0.00 ft

RW .098 @ 65 F

SALINITY 84500.00 P.P.M. A.P.I. Gravity 31.00

BLOW DESCRIPTION

Initial Blow -
 Surface blow built to 4.25", weak blow

Initial Shutin -
 Bled off blow, no return blow

Final Blow -
 Bubble to open tool, surface blow in
 7 min, built to 5.5", weak blow

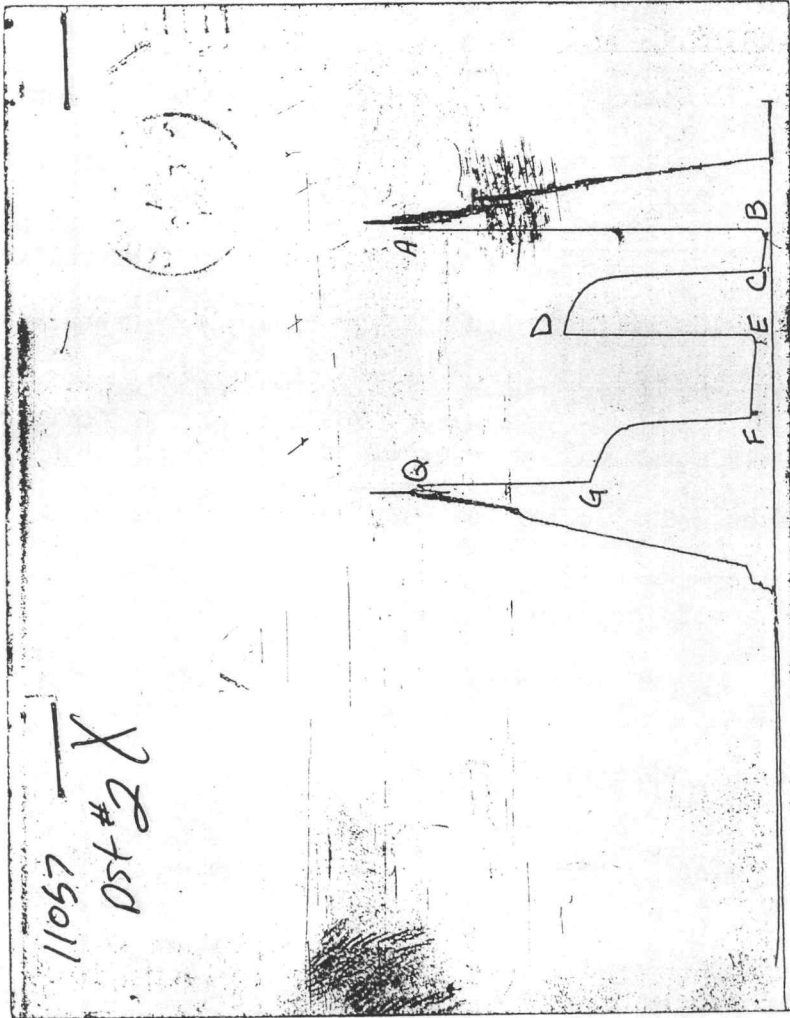
Final Shutin -
 Bled off blow, very weak surface blow
 in 5 min, died in 5 min, no blow

SAMPLES:
 SENT TO:

MUD DATA-----	
Mud Type	Chemical
Weight	9.00 lb/cf
Vis.	48.00 S/L
W.L.	8.80 in3
F.C.	0.00 in
Mud Drop	
Amt. of fill	0.00 ft
Btm. H. Temp.	121.00 F
Hole Condition	
% Porosity	0.00
Packer Size	6.75 in
No. of Packers	2
Cushion Amt.	0.00
Cushion Type	
Reversed Out	
Tool Chased	
Tester	Shane McBride
Co. Rep.	Eric Waddell
Contr.	Mallard
Rig #	
Unit #	
Pump T.	

Test Successful: Y

CHART PAGE



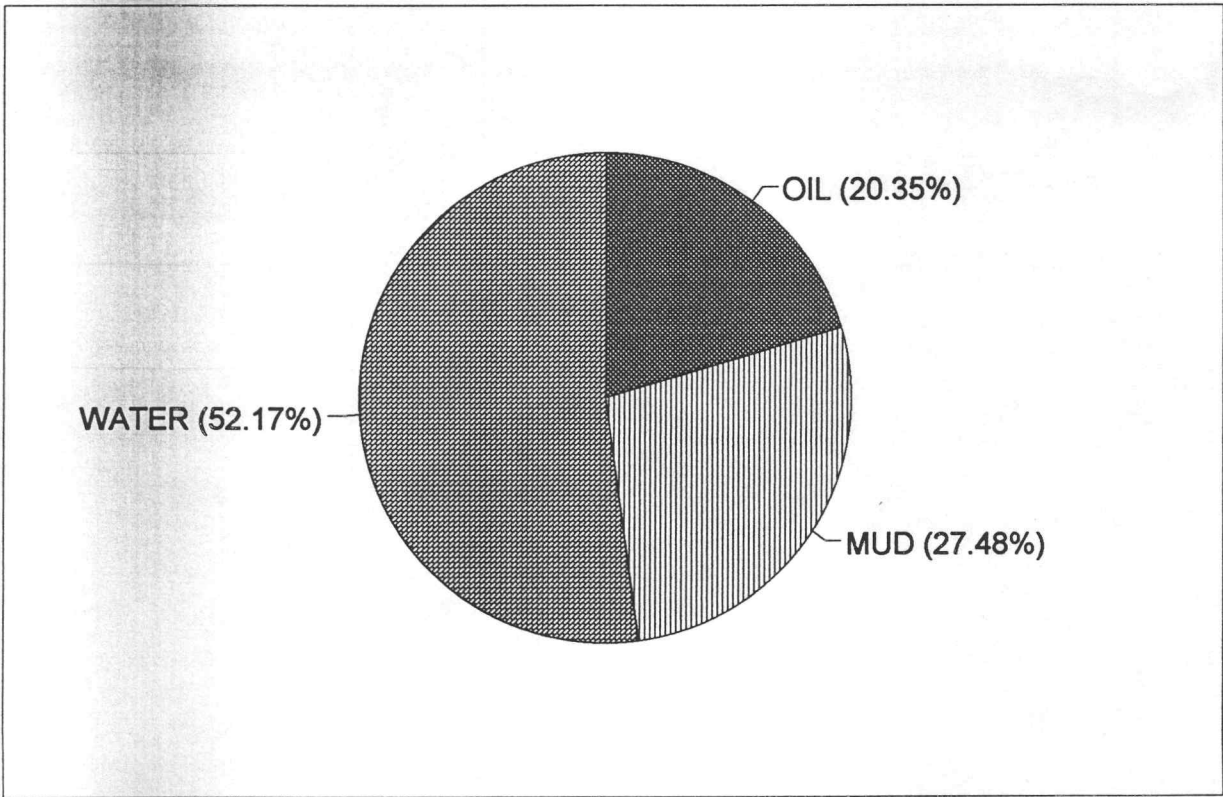
This is an actual photograph of recorder chart

CALCULATED RECOVERY ANALYSIS

DST # 2

TICKET # 7957

SAMPLE #	TOTAL FEET	GAS		OIL		WATER		MUD		
		%	FEET	%	FEET	%	FEET	%	FEET	
DRILL PIPE	1	20	0	100	20	0	0	0	0	
	2	11	0	10	1.1	20	2.2	70	7.7	
	3		0		0		0		0	
	4		0		0		0		0	
	5		0		0		0		0	
	6		0		0		0		0	
WEIGHT PIPE	1		0		0		0		0	
	2		0		0		0		0	
	3		0		0		0		0	
	4		0		0		0		0	
DRL COLLAR	1	19	0	10	1.9	20	3.8	70	13.3	
	2	115	0	5	5.75	55	63.25	40	46	
	3	115	0		0	90	103.5	10	11.5	
	4		0		0		0		0	
	5		0		0		0		0	
TOTAL		280	0	0	10.26786	28.75	61.69643	172.75	28.03571	78.5
HRS OPE BBL/DAY										
BBL OIL=	0.337451	*	1.50	5.399208						
BBL WATER=	0.865274	*	13.84438							
BBL MUD=	0.455706									
BBL GAS =	0									



TRILOBITE TESTING L.L.C.

OPERATOR : Eric Waddell Company
 WELL NAME: Younkin #1
 LOCATION : 2-13S-34W, Logan Cty KS
 INTERVAL : 4494.00 To 4531.00 ft

DATE 09/30/95
 KB 3023.00 ft TICKET NO: 7958 DST #3
 GR 3018.00 ft FORMATION: Johnson
 TD 4531.00 ft TEST TYPE: CONVENTIONAL

RECORDER DATA

Mins	Field	1	2	3	4	TIME DATA-----
PF 30 Rec.	11057	11057	11058			PF Fr. 0200 to 0230 hr
SI 30 Range(Psi)	4500.0	4500.0	4500.0	0.0	0.0	IS Fr. 0230 to 0300 hr
SF 0 Clock(hrs)	21048	21048	22347			SF Fr. to hr
FS 0 Depth(ft)	4498.0	4498.0	4528.0	0.0	0.0	FS Fr. to hr

	Field	1	2	3	4	
A. Init Hydro	2287.0	2285.0	0.0	0.0	0.0	T STARTED hr
B. First Flow	22.0	16.0	0.0	0.0	0.0	T ON BOTM hr
B1. Final Flow	11.0	9.0	0.0	0.0	0.0	T OPEN 0200 hr
C. In Shut-in	11.0	9.0	0.0	0.0	0.0	T PULLED 0300 hr
D. Init Flow	0.0	0.0	0.0	0.0	0.0	T OUT hr
E. Final Flow	0.0	0.0	0.0	0.0	0.0	
F. Fl Shut-in	0.0	0.0	0.0	0.0	0.0	
G. Final Hydro	2242.0	2216.0	0.0	0.0	0.0	TOOL DATA-----
Inside/Outside	I	I	O			Tool Wt. 0.00 lbs

RECOVERY

Tot Fluid 5.00 ft of 5.00 ft in DC and 0.00 ft in DP
 5.00 ft of Drilling mud

Wt Set On Packer 0.00 lbs
 Wt Pulled Loose 0.00 lbs
 Initial Str Wt 0.00 lbs
 Unseated Str Wt 0.00 lbs
 Bot Choke 0.75 in
 Hole Size 7.88 in
 D Col. ID 2.25 in
 D. Pipe ID 3.80 in
 D.C. Length 249.00 ft
 D.P. Length 0.00 ft

RW 1.2 @ 60 F

SALINITY 6600.00 P.P.M. A.P.I. Gravity 0.00

BLOW DESCRIPTION

Initial Blow -
 Surface blow 1/8", blew throughout

Initial Shutin -
 Bled off blow, no return blow

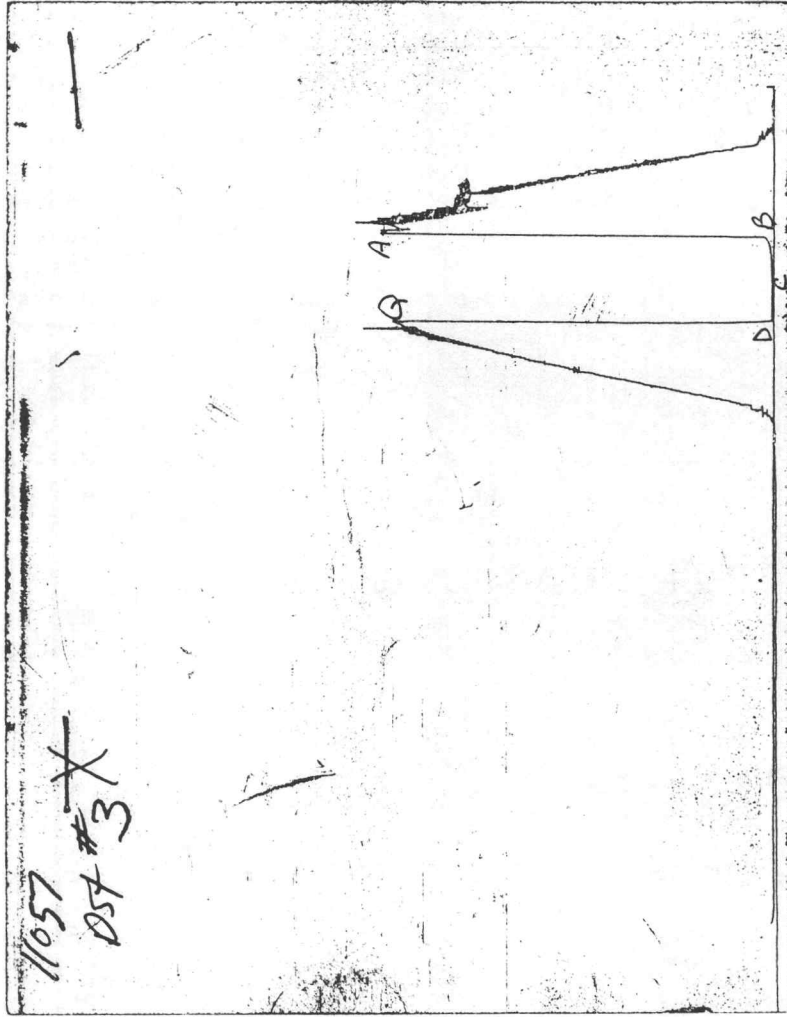
Pulled tool by order of geologist

MUD DATA-----
 Mud Type Chemical
 Weight 9.30 lb/
 Vis. 47.00 S/L
 W.L. 8.80 in3
 F.C. 0.00 in
 Mud Drop
 Amt. of fill 0.00 ft
 Btm. H. Temp. 115.00 F
 Hole Condition
 % Porosity 0.00
 Packer Size 6.75 in
 No. of Packers 2
 Cushion Amt. 0.00
 Cushion Type
 Reversed Out
 Tool Chased
 Tester Shane McBride
 Co. Rep. Eric Waddell
 Contr. Mallard
 Rig #
 Unit #
 Pump T.

SAMPLES:
 SENT TO:

Test Successful: Y

CHART PAGE



This is an actual photograph of recorder chart