

TRILOBITE TESTING INC.

P.O. Box 1733 • Hays, Kansas 67601

Test Ticket

NO. 042622 15777

BT: _____

Well Name & No. Hon-as #1 Test No. 1 Date 5-10-11
 Company Double D's LLC Elevation 2216 KB 2208 GL
 Address 133 E 12th Hays Ks 67601 + 3607
 Co. Rep / Geo. AL Downing Rig Discovery #3
 Location: Sec. 22 Twp. 13 S Rge. 20 W Co. ELLIS State KS

Interval Tested 3681-3702 Zone Tested LTC-K
 Anchor Length 21 Drill Pipe Run 3244 Mud Wt. 8.7
 Top Packer Depth 3676 Drill Collars Run 31 Vis 54
 Bottom Packer Depth 3681 Wt. Pipe Run 0 WL 8.8
 Total Depth 3702 Chlorides 800 ppm System LCM 2#
 Blow Description IP-Weak Blow Built to 1/4 IN
ISI-Dead NO Blow Back
FR-Dead NO Blow

Rec	Feet of	%gas	%oil	%water	%mud
<u>5</u>	<u>Mud with a scum of oil</u>				<u>100%</u>
Rec	Feet of	%gas	%oil	%water	%mud
Rec	Feet of	%gas	%oil	%water	%mud
Rec	Feet of	%gas	%oil	%water	%mud
Rec	Feet of	%gas	%oil	%water	%mud

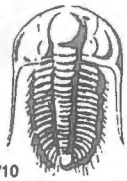
Rec Total 5 BHT 110 Gravity _____ API RW _____ @ _____ °F Chlorides _____ ppm

(A) Initial Hydrostatic 1791 Test 1125 T-On Location 7:45
 (B) First Initial Flow 13 Jars _____ T-Started 8:27
 (C) First Final Flow 16 Safety Joint _____ T-Open 10:14
 (D) Initial Shut-In 509 Circ Sub _____ T-Pulled 12:16 11:31
 (E) Second Initial Flow 17 Hourly Standby _____ T-Out 12:13:01
 (F) Second Final Flow 17 Mileage 40 AT 510 Comments _____
 (G) Final Shut-In _____ Sampler _____
 (H) Final Hydrostatic 1754 Straddle _____ Ruined Shale Packer _____
 Shale Packer _____ Ruined Packer _____
 Extra Packer _____ Extra Copies _____
 Extra Recorder _____ Sub Total 8
 Day Standby _____ Total 1181
 Accessibility _____ MP/DST Disc't _____
 Sub Total 1181

Initial Open 30
 Initial Shut-In 30
 Final Flow 15
 Final Shut-In 30

Approved By _____ Our Representative Jeff Brown

TriLOBite Testing Inc. shall not be liable for damaged of any kind of the property or personnel of the one for whom a test is made, or for any loss suffered or sustained, directly or indirectly, through the use of its equipment, or its statements or opinion concerning the results of any test, tools lost or damaged in the hole shall be paid for at cost by the party for whom the test is made.



TRILOBITE TESTING INC.

P.O. Box 1733 • Hays, Kansas 67601

Test Ticket

NO. 042623

BY: _____

Well Name & No. Hongs #1 Test No. 2 Date 5-10-11
 Company Double Ds LLC Elevation 2214 KB 2208 GL
 Address 133 E 12th Hays KS 67601 + 3607
 Co. Rep / Geo. AL Downing Rig Discovery #3
 Location: Sec. 22 Twp. 13S Rge. 20 W Co. ELLIS State K.S

Interval Tested 3704-3750 Zone Tested LKC-4
 Anchor Length 46 Drill Pipe Run 3675 Mud Wt. 9.0
 Top Packer Depth 3699 Drill Collars Run 31 Vis 59
 Bottom Packer Depth 3704 Wt. Pipe Run 0 WL 80
 Total Depth 3750 Chlorides 1500 ppm System LCM 2#
 Blow Description TIP-Weak surface Blow bit IT to 1/8 IN Dead Back To A weak surface Blow
ISI-Dead NO Blow Back
FPD-Dead

Rec	Feet of	%gas	%oil	%water	%mud
1	Mud with A scum of oil				

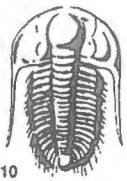
Rec Total 1 BHT 109 Gravity _____ API RW _____ @ _____ °F Chlorides _____ ppm

(A) Initial Hydrostatic 1807 Test 1125 T-On Location 18:58
 (B) First Initial Flow 13 14 Jars _____ T-Started 19:22
 (C) First Final Flow 14 13 Safety Joint _____ T-Open 20:03
 (D) Initial Shut-In 13 14 Circ Sub _____ T-Pulled 22:19
 (E) Second Initial Flow _____ Hourly Standby _____ T-Out 00:06
 (F) Second Final Flow _____ Mileage 40 RT 50 Comments _____
 (G) Final Shut-In 5 Sampler _____
 (H) Final Hydrostatic 17840 Straddle _____ Ruined Shale Packer _____
 Shale Packer _____ Ruined Packer _____
 Extra Packer _____ Extra Copies _____
 Extra Recorder _____ Sub Total 8
 Day Standby _____ Total 1181
 Accessibility _____ MP/DST Disc't _____
 Sub Total 1181

Initial Open 30
 Initial Shut-In 30
 Final Flow 15
 Final Shut-In _____

Approved By _____ Our Representative Jeff Brown

TriLOBite Testing Inc. shall not be liable for damaged of any kind of the property or personnel of the one for whom a test is made, or for any loss suffered or sustained, directly or indirectly, through the use of its equipment, or its statements or opinion concerning the results of any test, tools lost or damaged in the hole shall be paid for at cost by the party for whom the test is made.



TRILOBITE TESTING INC.

P.O. Box 1733 • Hays, Kansas 67601

Test Ticket

NO. 042624

RECEIVED
MAY 16 2011

Well Name & No. HONGS #1 BY: _____ Test No. 3 Date 5-11-11
 Company DOUBLE D'S LLC Elevation 2216 KB 2208 GL _____
 Address 133 E 12 HAYS KS 67601 + 3607
 Co. Rep / Geo. AL DOWNING Rig DISCOVER #3
 Location: Sec. 22 Twp. 13 S Rge. 20 W Co. ELLIS State KS

Interval Tested 3828-3853 Zone Tested CONGL SD
 Anchor Length 25 Drill Pipe Run 3802 Mud Wt. 9.2
 Top Packer Depth 3823 Drill Collars Run 31 Vis 54
 Bottom Packer Depth 3828 Wt. Pipe Run 0 WL 8.8
 Total Depth 3853 Chlorides 4000 ppm System LCM 2 1/2

Blow Description TP-Weak Blow Built TO 1 1/4 IN
ISI-Dead No Blow Back
FP-Weak Blow Built TO 3/4 IN
FSI-Dead No Blow Back

Rec	Feet of	%gas	%oil	%water	%mud
<u>10</u>	<u>DCM</u>		<u>10</u>		<u>90</u>
<u>5</u>	<u>MO</u>		<u>95</u>		<u>5</u>
Rec	Feet of	%gas	%oil	%water	%mud
Rec	Feet of	%gas	%oil	%water	%mud

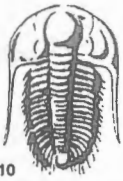
Rec Total 15 BHT 115 Gravity 32 API RW @ _____ °F Chlorides _____ ppm

(A) Initial Hydrostatic 1882 Test 1125 T-On Location 9:13
 (B) First Initial Flow 13 Jars _____ T-Started 9:51
 (C) First Final Flow 18 Safety Joint _____ T-Open 11:34
 (D) Initial Shut-In 556 Circ Sub _____ T-Pulled 13:34
 (E) Second Initial Flow 19 Hourly Standby _____ T-Out 15:08
 (F) Second Final Flow 22 Mileage 40 RT 560 Comments _____
 (G) Final Shut-In 132 Sampler _____
 (H) Final Hydrostatic 1870 Straddle _____ Ruined Shale Packer _____
 Shale Packer _____ Ruined Packer _____
 Extra Packer _____ Extra Copies _____
 Extra Recorder _____ Sub Total 8
 Day Standby _____ Total 1181
 Accessibility _____ MP/DST Disc't _____
 Sub Total 1181

Initial Open 30
 Initial Shut-In 30
 Final Flow 30
 Final Shut-In 30

Approved By _____ Our Representative Jeff Brown

TriLOBite Testing Inc. shall not be liable for damaged of any kind of the property or personnel of the one for whom a test is made, or for any loss suffered or sustained, directly or indirectly, through the use of its equipment, or its statements or opinion concerning the results of any test, tools lost or damaged in the hole shall be paid for at cost by the party for whom the test is made.



TRILOBITE TESTING INC.

P.O. Box 1733 • Hays, Kansas 67601

Test Ticket

NO. 042625

RECEIVED
MAY 16 2011

Well Name & No. Hogas #1 BY: _____ Test No. 4 Date 5-12-11
 Company Double D's LLC Elevation 2216 KB 2208 GL _____
 Address 133 E 12th Hays KS 67701 + 3607
 Co. Rep / Geo. AL Downing Rig Discover #3
 Location: Sec. 22 Twp. 13s Rge. 20W Co. ELLIS State KS

Interval Tested 3823-3872 Zone Tested Cons 1
 Anchor Length 49-Anchor 90 Tail Drill Pipe Run 3801 Mud Wt. 9.2
 Top Packer Depth 3818 Drill Collars Run 31 Vis 54
 Bottom Packer Depth 3823 Wt. Pipe Run 0 WL 8.8
 Total Depth 3942 Chlorides 4000 ppm System LCM 2 1/2

Blow Description FP - Fair Blow BUILT TO 7 IN
ISL - Dead No Blow Back
FP - Fair Blow BUILT TO 7 IN
ISL - Dead No Blow Back

Rec	Feet of	%gas	%oil	%water	%mud
<u>23</u>	<u>Hocm</u>		<u>30%</u>		<u>70%</u>
<u>25</u>	<u>CASSY oil</u>	<u>5%</u>	<u>95%</u>		
	<u>200 Coil</u>				

Rec Total 98 BHT 118 Gravity 37 API RW _____ @ _____ °F Chlorides _____ ppm

(A) Initial Hydrostatic 1945 Test 1125' T-On Location 4:56
 (B) First Initial Flow 24 Jars T-Started 5:22
 (C) First Final Flow 46 Safety Joint T-Open 6:57
 (D) Initial Shut-In 10 2/3 Circ Sub T-Pulled 9:57
 (E) Second Initial Flow 47 Hourly Standby T-Out 12:08
 (F) Second Final Flow 58 Mileage 40 RT 50' Comments _____
 (G) Final Shut-In 10 3/3 Sampler _____
 (H) Final Hydrostatic 1878 Straddle 600' Ruined Shale Packer _____
 Shale Packer _____ Ruined Packer _____
 Extra Packer _____ Extra Copies _____
 Extra Recorder _____
 Day Standby _____
 Accessibility _____

Initial Open 45
 Initial Shut-In 45
 Final Flow 45
 Final Shut-In 45

Sub Total 1781'
 Total 1781'
 MP/DST Disc't _____

Approved By _____ Our Representative Jeff Bohn

TriLOBITE Testing Inc. shall not be liable for damaged of any kind of the property or personnel of the one for whom a test is made, or for any loss suffered or sustained, directly or indirectly, through the use of its equipment, or its statements or opinion concerning the results of any test, tools lost or damaged in the hole shall be paid for at cost by the party for whom the test is made.